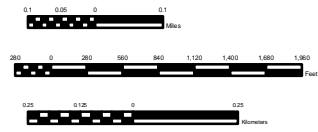


- Legend**
- NYS Freshwater Wetland
 - OTHER WET AREAS
 - AREA TO BE ADDED
 - AREA TO BE DELETED

3



**Proposed Wetland Amendments
West Henrietta Quad
Monroe County Map 12 of 21**



This map was promulgated pursuant to Article 24 of the Environmental Conservation Law (The Freshwater Wetlands Act) on August 20, 1986 by the commission of New York State Department of Environmental Conservation. This wetland map was most recently officially updated in part or in its entirety on August 28, 2008.

This map shows the approximate locations of the actual boundaries of wetlands regulated by the Freshwater Wetlands Act.

Adjacent to the wetland is the area called the 'adjacent area' or 'buffer zone' which is also regulated. The adjacent area extends a minimum of 100 feet beyond the wetland boundary. In some cases the adjacent area may be extended beyond 100 feet. In those cases, the extended adjacent area boundary will be shown on the map symbolized as seen in the legend.

Wetlands shown on this map, along with other wetlands which may or may not appear, are also protected under federal law, pursuant to Section 106 of the Clean Water Act, or under local law. Interested parties should consult with their appropriate Army Corps of Engineers (ACEC) and local government office to determine whether other permits are required.

Freshwater Wetlands maps are available for inspection at the regional offices of the Department of Environmental Conservation and local government clerk's office. For further information about the availability of the maps, for permit applications, wetland Conservation, etc., please see the NYSDCE website at: www.dec.state.ny.gov

Other Wet Areas: Other wet areas derived from US Fish and Wildlife Service National Wetlands Inventory (NWI) data 2004. Note some NWI data may not appear where it coincides with Article 24 wetland, streams, lakes, ponds, or other features.