

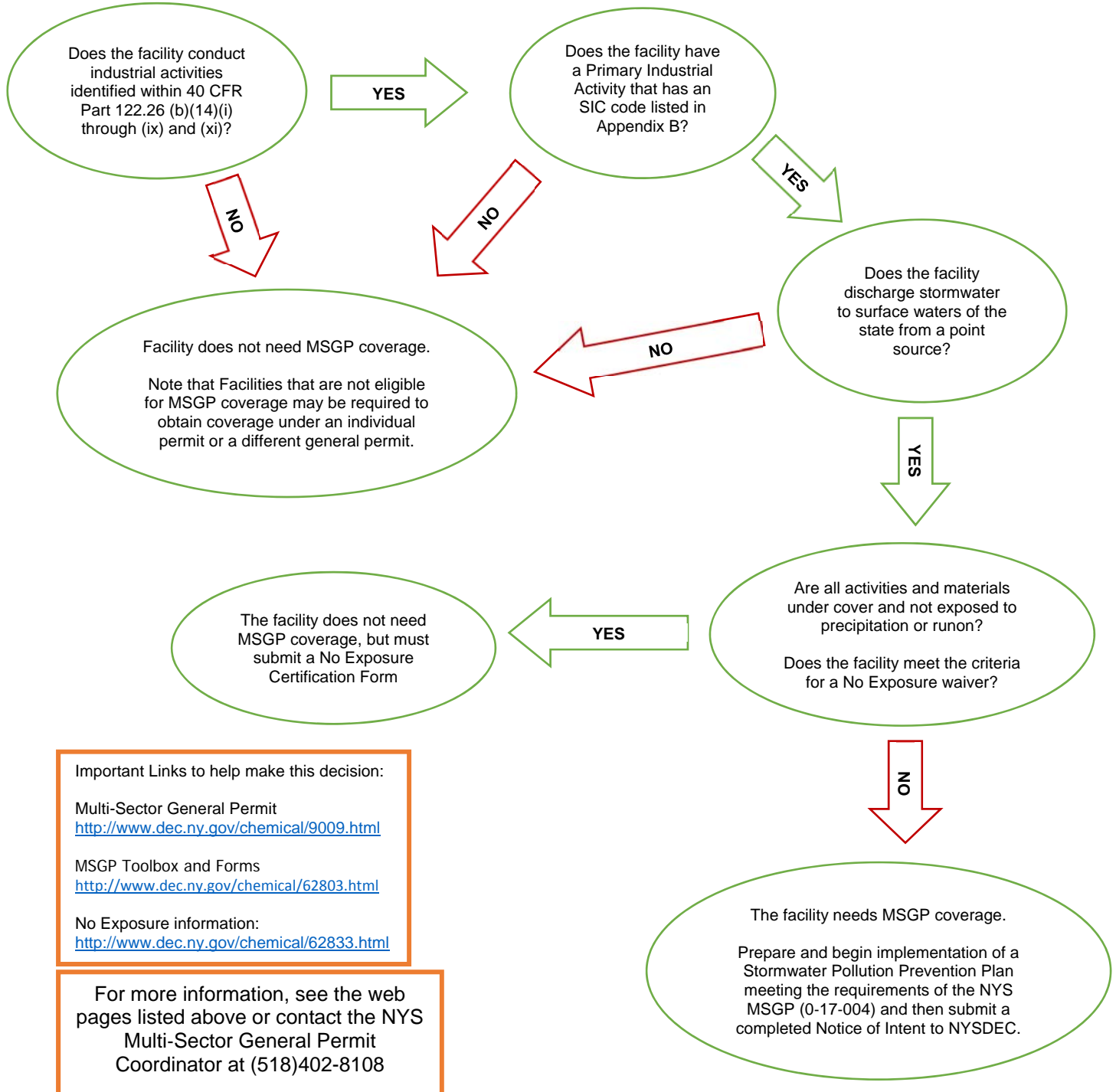
New York State Multi-Sector General Permit Decision Tree

START - Look up the following definitions in Appendix A of the MSGP: The MSGP can be found at the link indicated at the bottom of this page.

Discharge
Outfall
Point Source
Primary Industrial Activity
Surface Waters of the State

Next review the SIC codes in Appendix B and the Effluent Limitation Guidelines in Appendix D of the MSGP.

Also review 40 CFR Part 122.26 (b)(14)(i) through (ix) and (xi), which can be found through EPA's website or by using an online search engine.



Important Links to help make this decision:

Multi-Sector General Permit
<http://www.dec.ny.gov/chemical/9009.html>

MSGP Toolbox and Forms
<http://www.dec.ny.gov/chemical/62803.html>

No Exposure information:
<http://www.dec.ny.gov/chemical/62833.html>

For more information, see the web pages listed above or contact the NYS Multi-Sector General Permit Coordinator at (518)402-8108