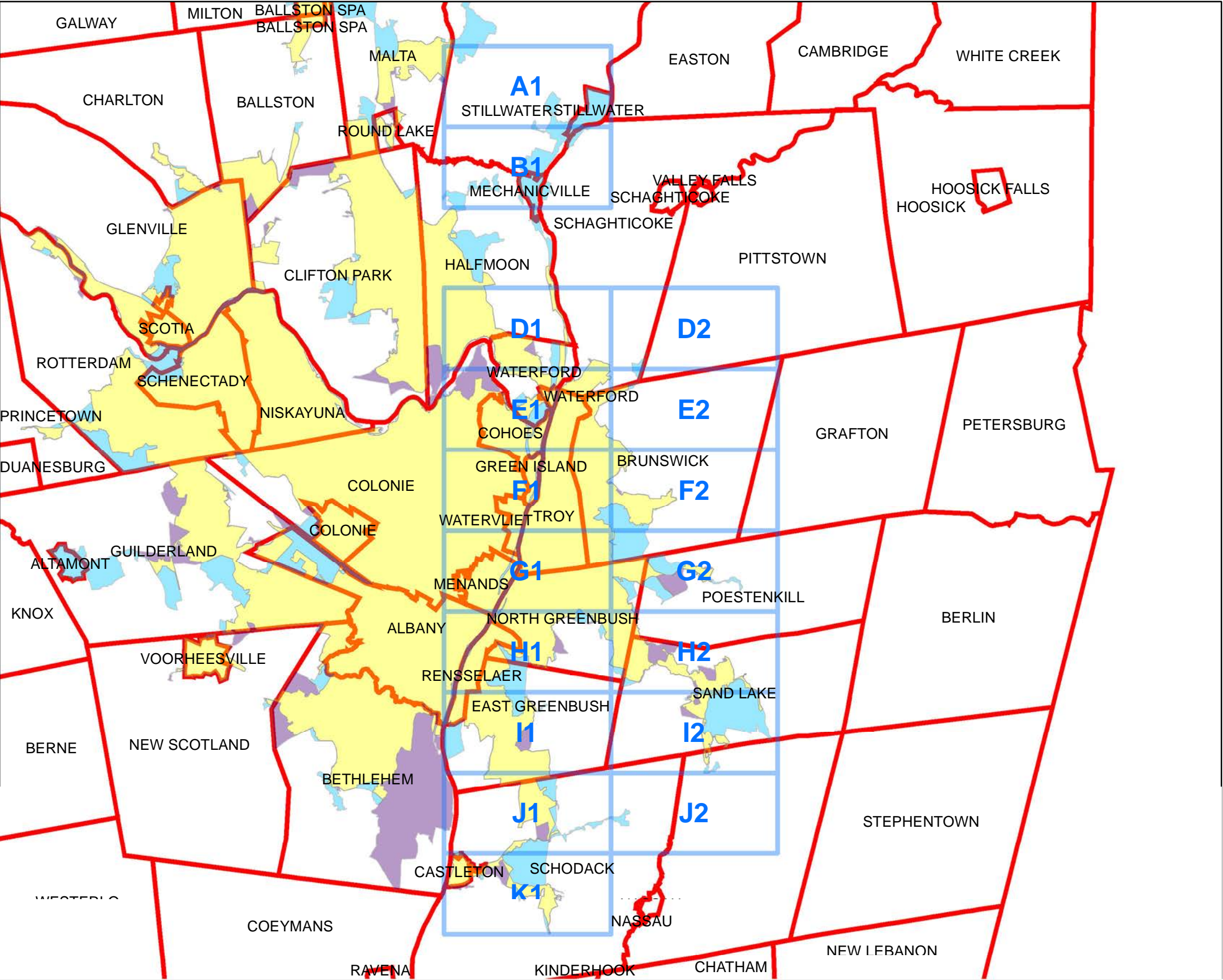


Rensselaer County

Municipal Separate Storm Sewer System (MS4) Minimal Regulated Boundaries

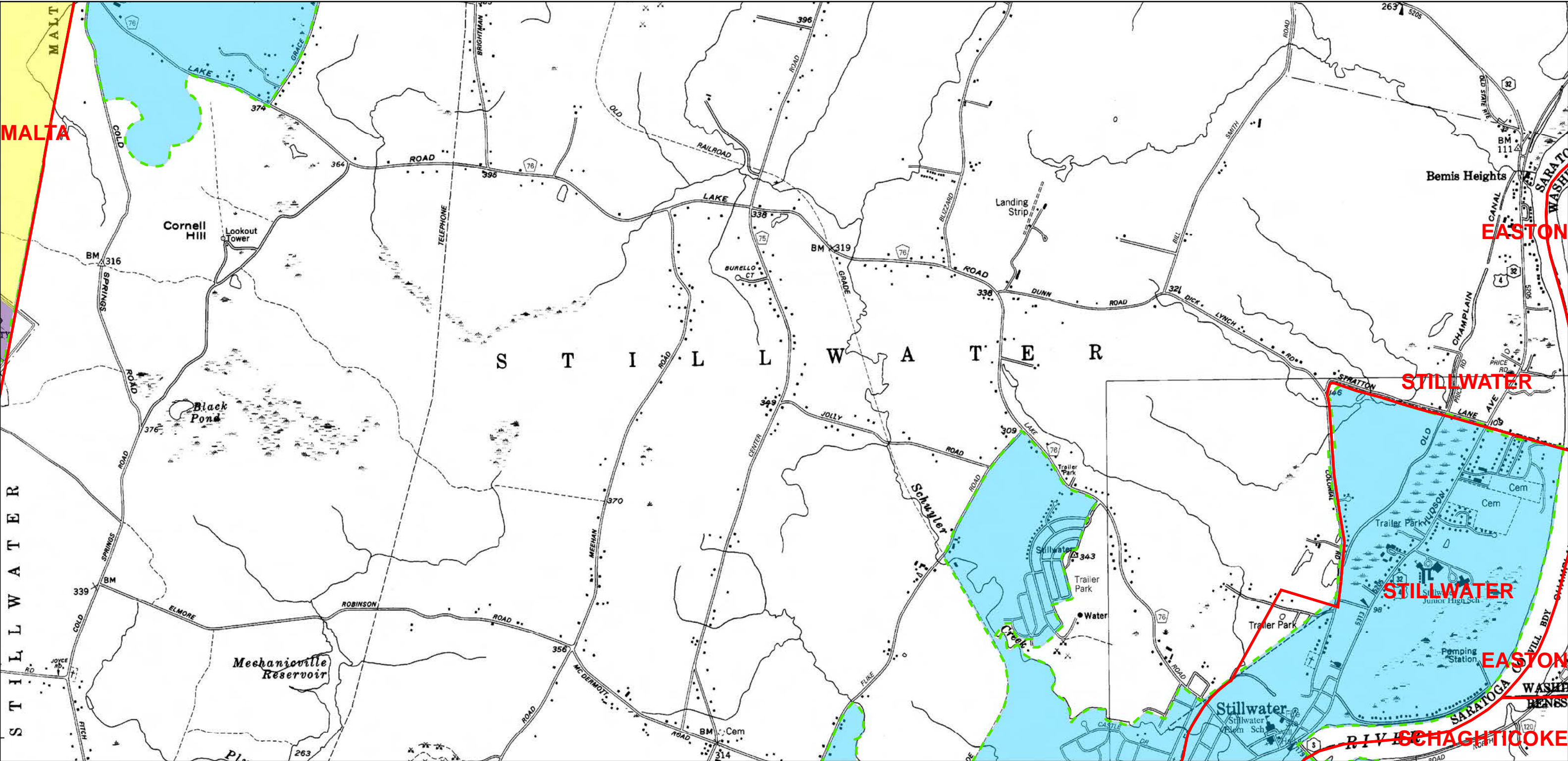


Legend

- Map Name Identification
- Town, Village, or City Boundary for New York State
- 2000 Census Urbanized Area (No longer UA based on 2010)
- Additionally Designated 2003
- Additionally Designated 2008
- Additionally Designated 2010
- 2010 and 2000 Urbanized Area Overlap
- 2010 Census Urbanized Area (Newly Designated Area)

Map Prepared by:

New York State Department of Environmental Conservation
Division of Water



Legend

- Town, Village, or City Boundary for New York State
- Automatically Designated MS4 Boundary
- 2000 Census Urbanized Area (No longer UA based on 2010)
- Additionally Designated 2003
- Additionally Designated 2008
- Additionally Designated 2010
- 2010 and 2000 Census Urbanized Area Overlap
- 2010 Census Urbanized Area (Newly Designated)

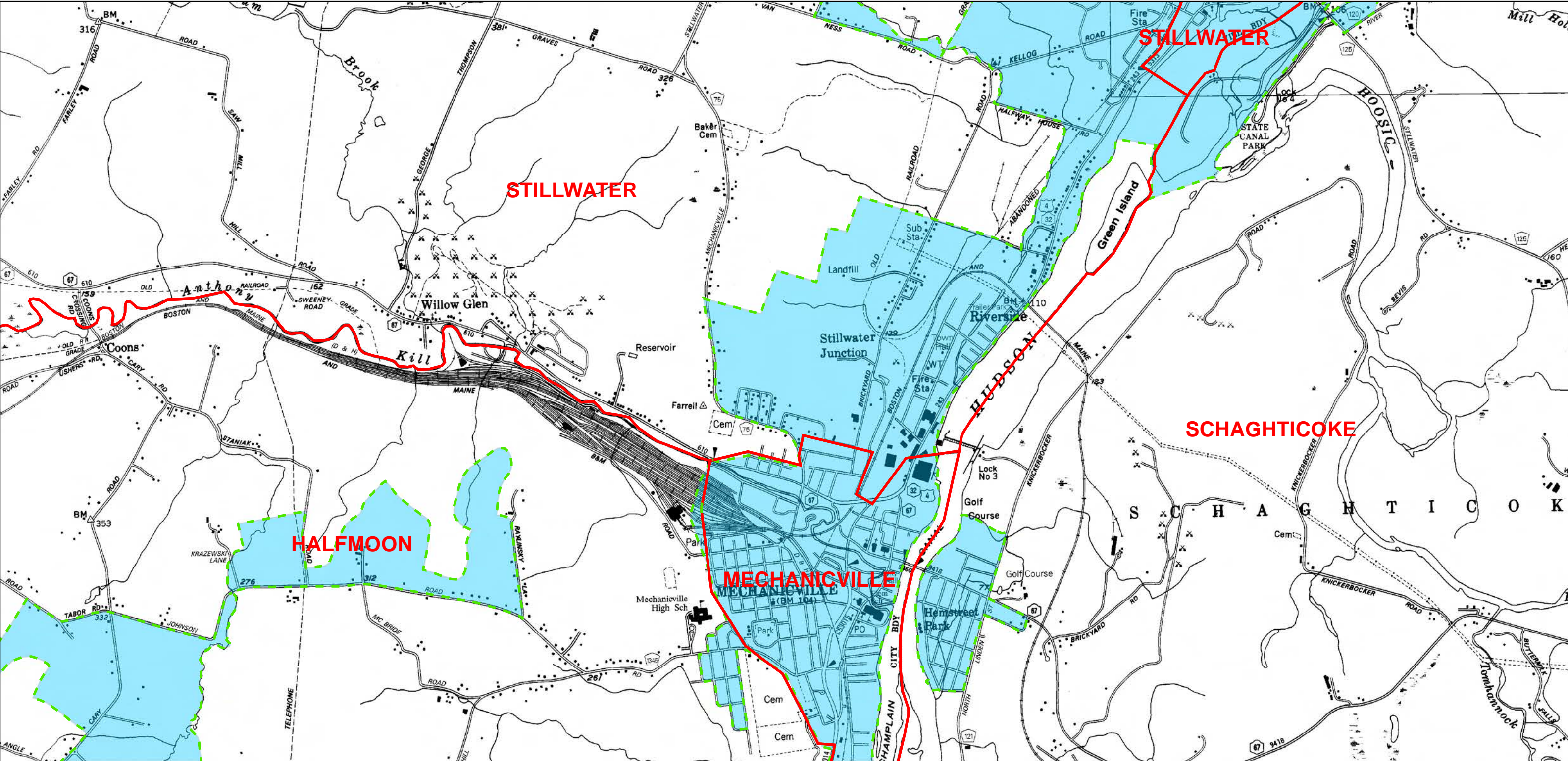


0 0.25 0.5 1 1.5 2 Miles

N

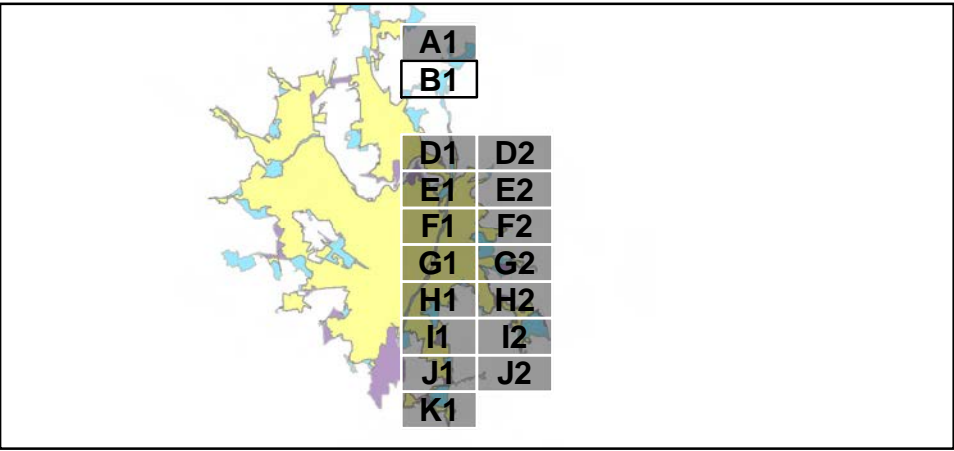
A1

Page 1 of 17



Legend

- Town, Village, or City Boundary for New York State
- Automatically Designated MS4 Boundary
- 2000 Census Urbanized Area (No longer UA based on 2010)
- Additionally Designated 2003
- Additionally Designated 2008
- Additionally Designated 2010
- 2010 and 2000 Census Urbanized Area Overlap
- 2010 Census Urbanized Area (Newly Designated)

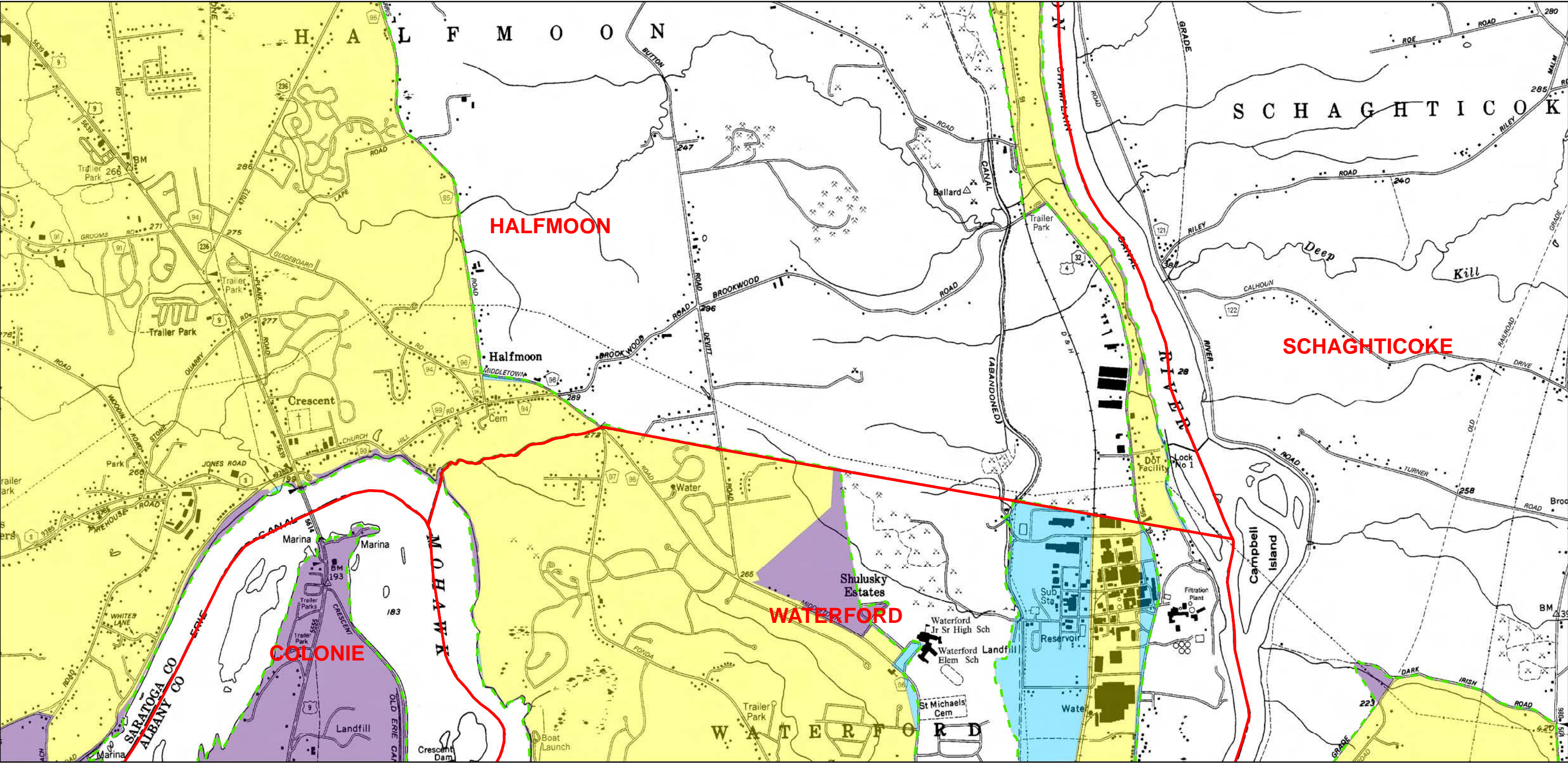


0 0.25 0.5 1 1.5 2 Miles

N

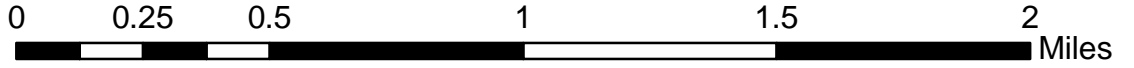
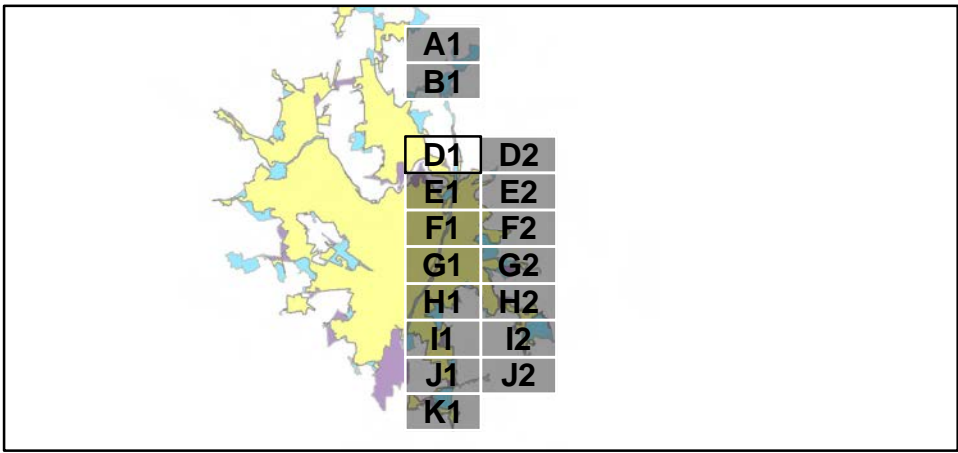
B1

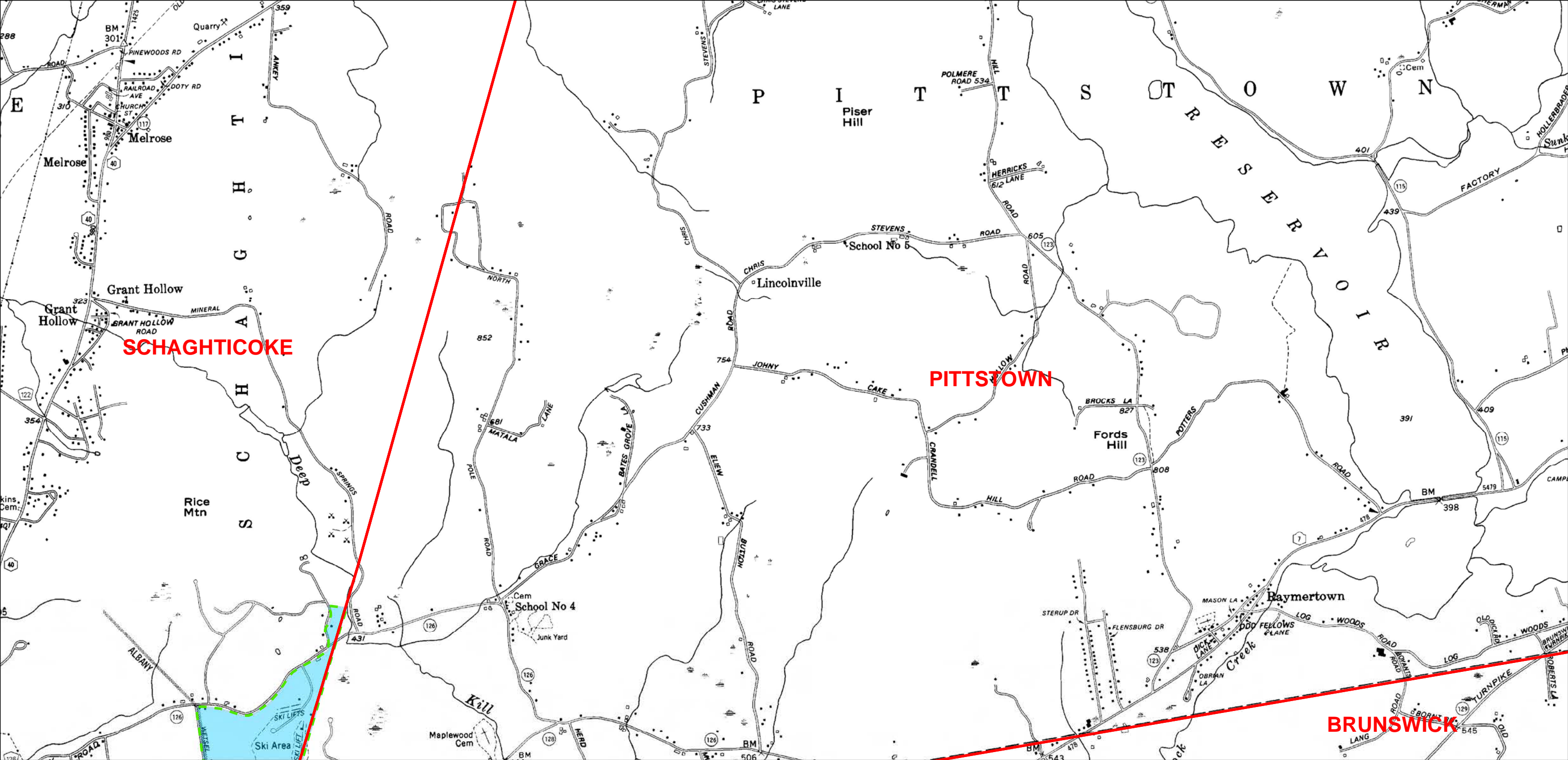
Page 2 of 17



Legend

- Town, Village, or City Boundary for New York State
- Automatically Designated MS4 Boundary
- 2000 Census Urbanized Area (No longer UA based on 2010)
- Additionally Designated 2003
- Additionally Designated 2008
- Additionally Designated 2010
- 2010 and 2000 Census Urbanized Area Overlap
- 2010 Census Urbanized Area (Newly Designated)





Legend

Town, Village, or City Boundary for New York State

Automatically Designated MS4 Boundary

2000 Census Urbanized Area (No longer UA based on 2010)

Additionally Designated 2003

Additionally Designated 2008

Additionally Designated 2010

2010 and 2000 Census Urbanized Area Overlap

2010 Census Urbanized Area (Newly Designated)

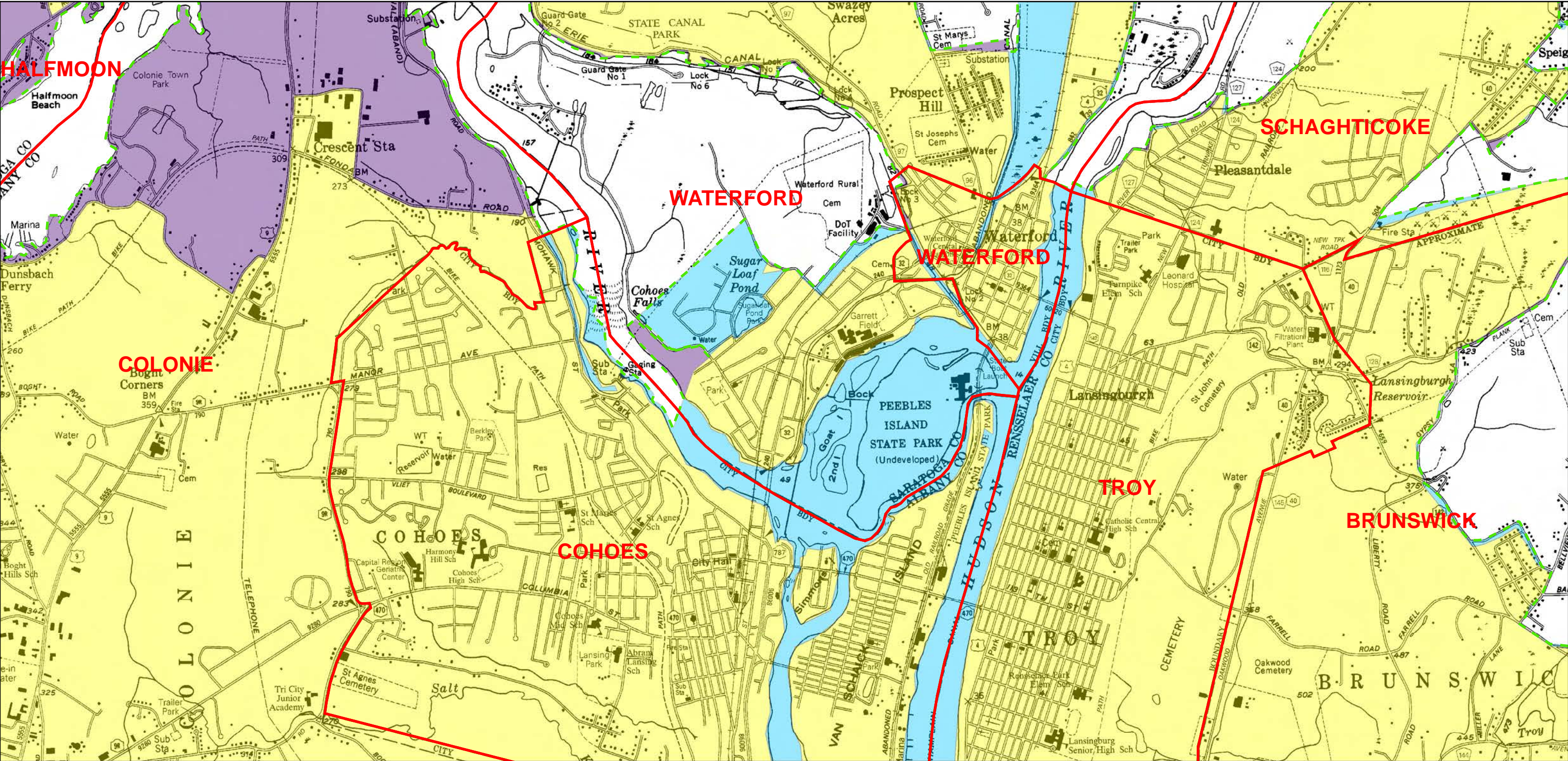
00.250.511.52

Miles

N

D2

Page 4 of 17



Legend

Town, Village, or City Boundary for New York State

Automatically Designated MS4 Boundary

2000 Census Urbanized Area (No longer UA based on 2010)

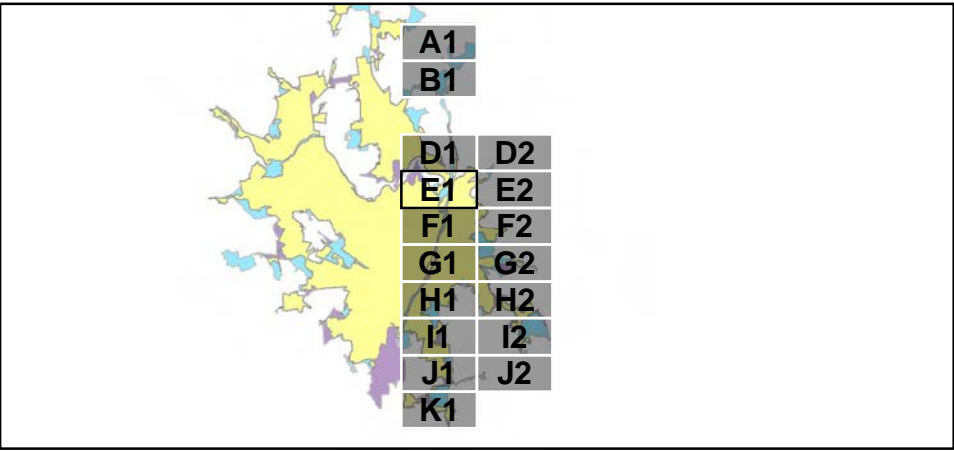
Additionally Designated 2003

Additionally Designated 2008

Additionally Designated 2010

2010 and 2000 Census Urbanized Area Overlap

2010 Census Urbanized Area (Newly Designated)



0

0.25

0.5

1

1.5

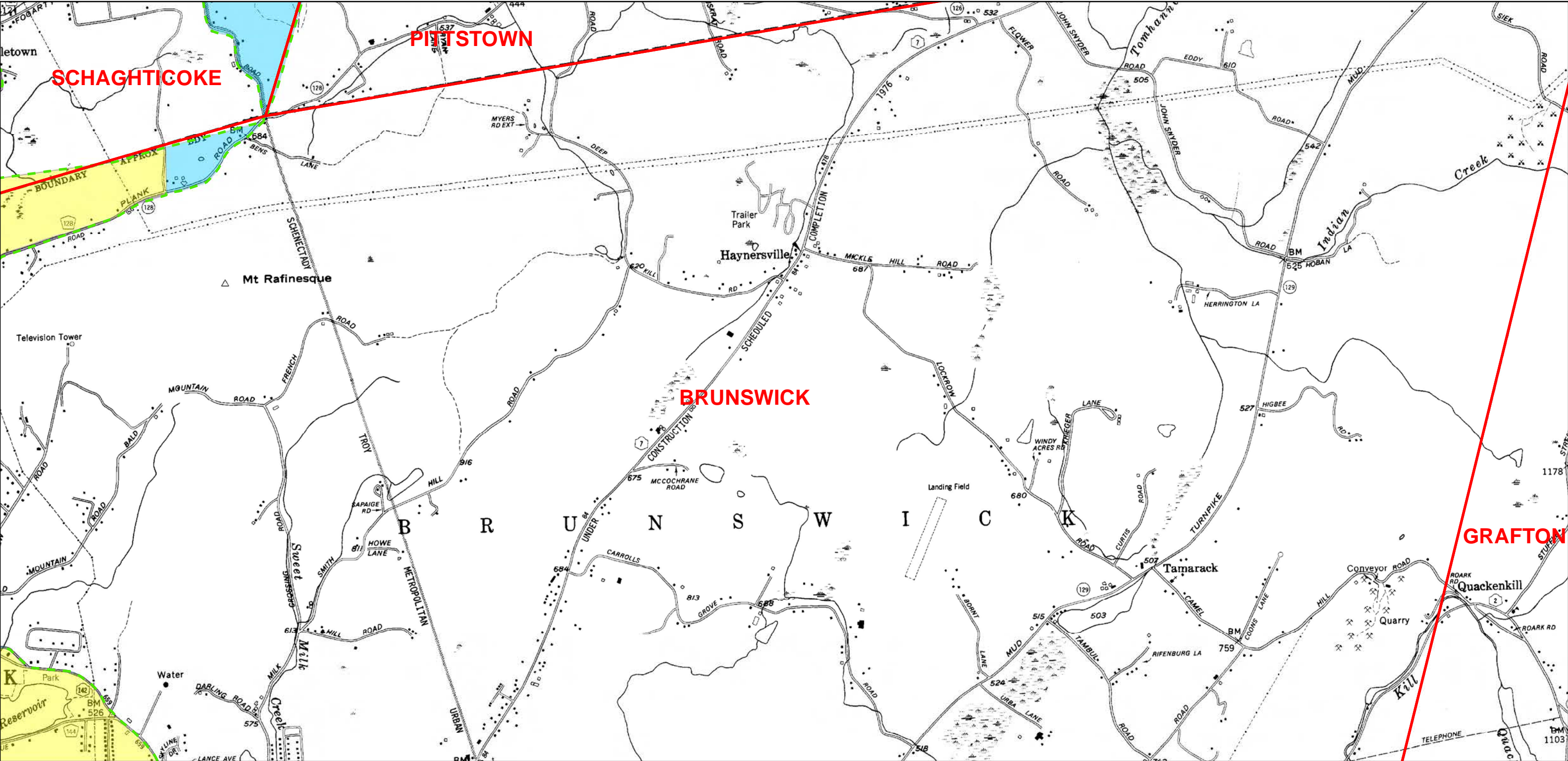
2

Miles

N

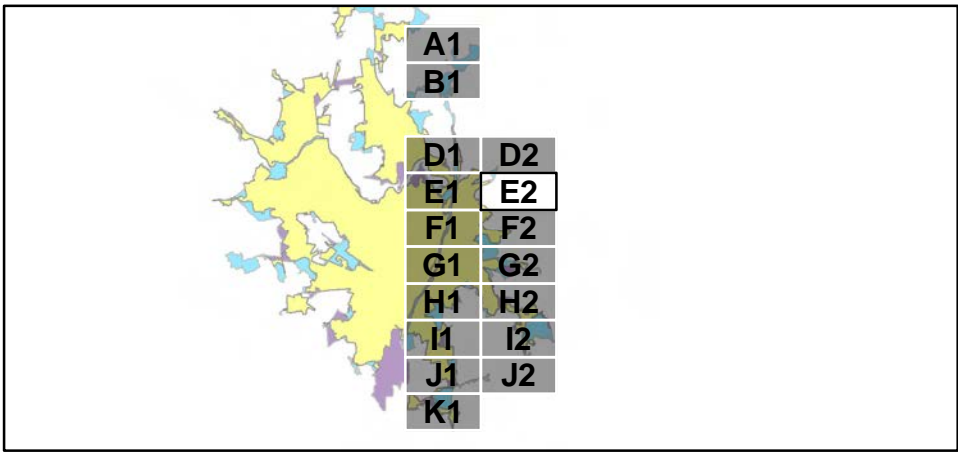
E1

Page 5 of 17



Legend

- Town, Village, or City Boundary for New York State
- Automatically Designated MS4 Boundary
- 2000 Census Urbanized Area (No longer UA based on 2010)
- Additionally Designated 2003
- Additionally Designated 2008
- Additionally Designated 2010
- 2010 and 2000 Census Urbanized Area Overlap
- 2010 Census Urbanized Area (Newly Designated)

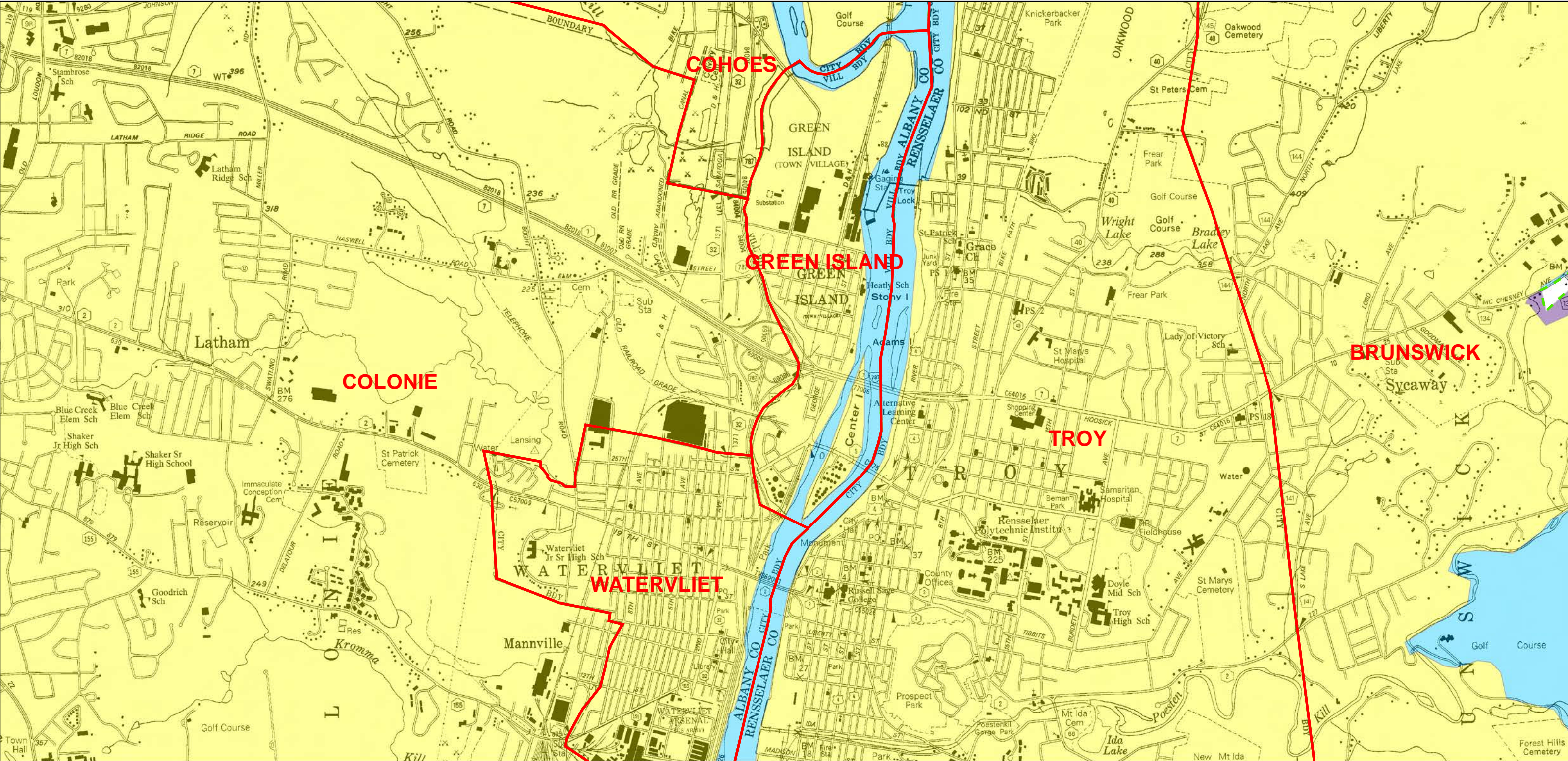


0 0.25 0.5 1 1.5 2 Miles

N

E2

Page 6 of 17



Legend

Town, Village, or City Boundary for New York State

Automatically Designated MS4 Boundary

2000 Census Urbanized Area (No longer UA based on 2010)

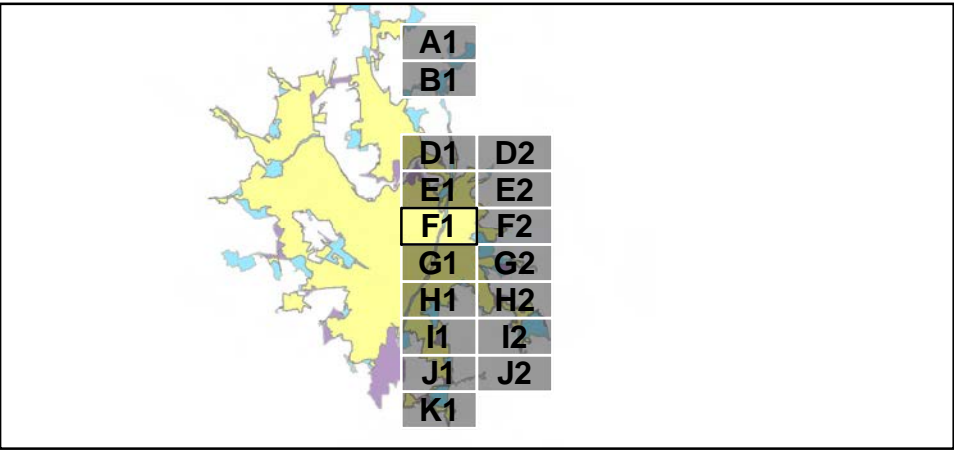
Additionally Designated 2003

Additionally Designated 2008

Additionally Designated 2010

2010 and 2000 Census Urbanized Area Overlap

2010 Census Urbanized Area (Newly Designated)



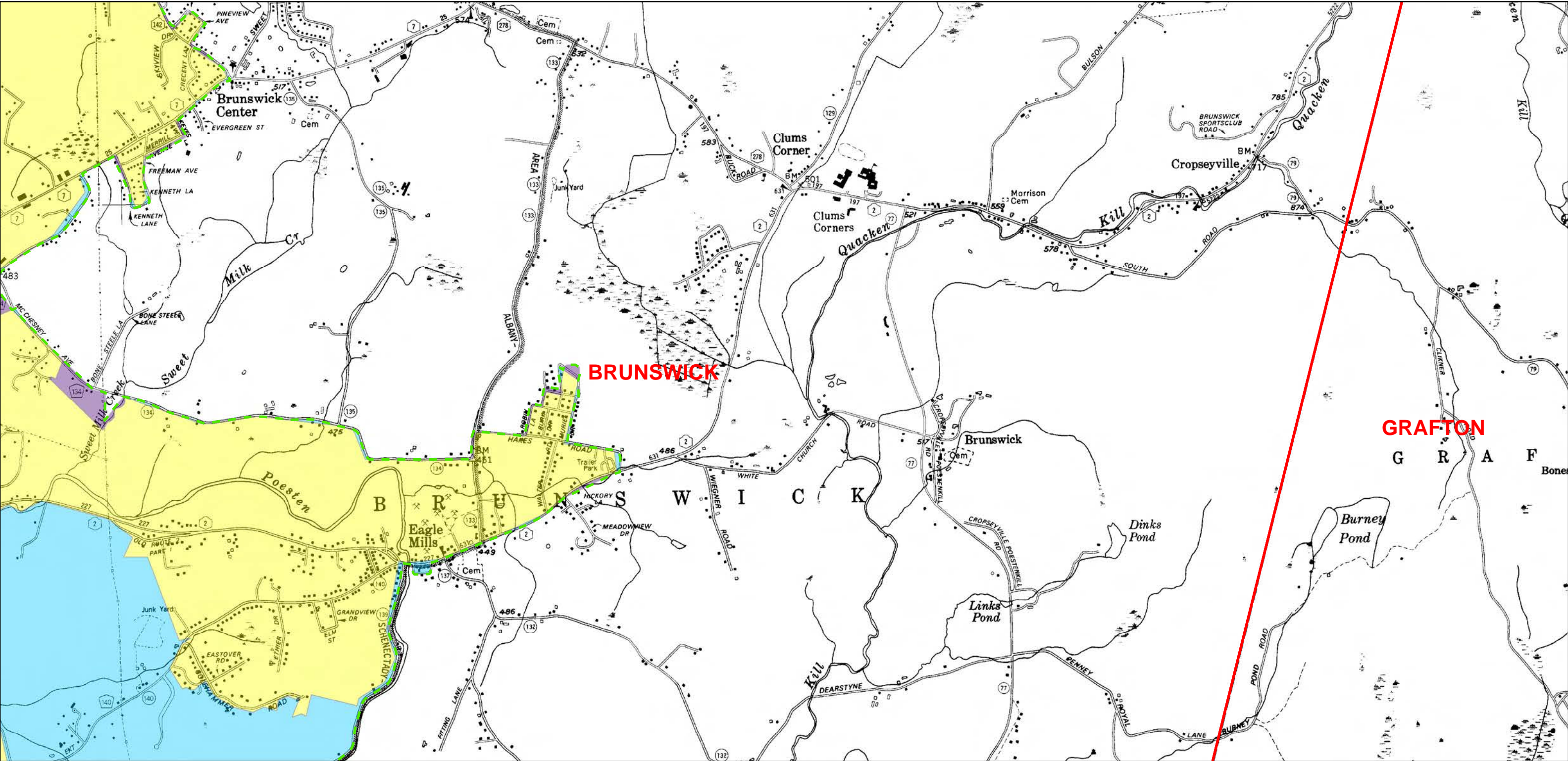
00.250.511.52

Miles

N

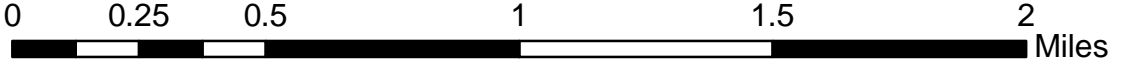
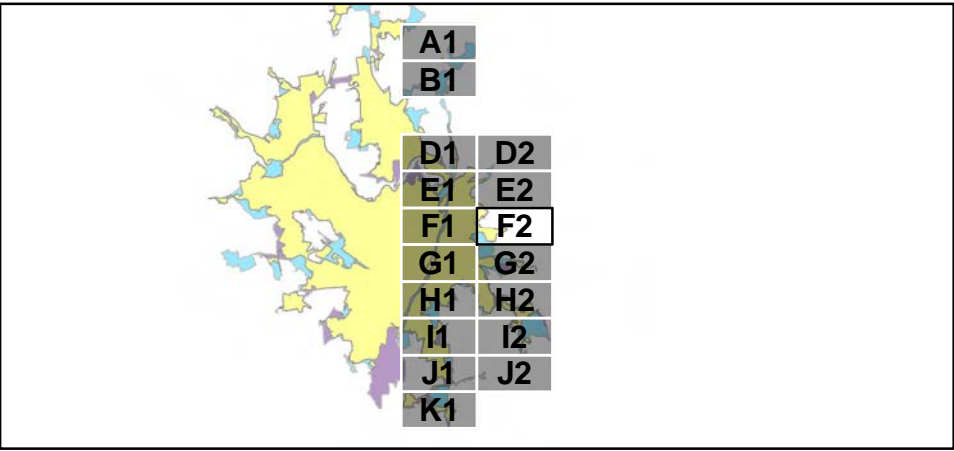
F1

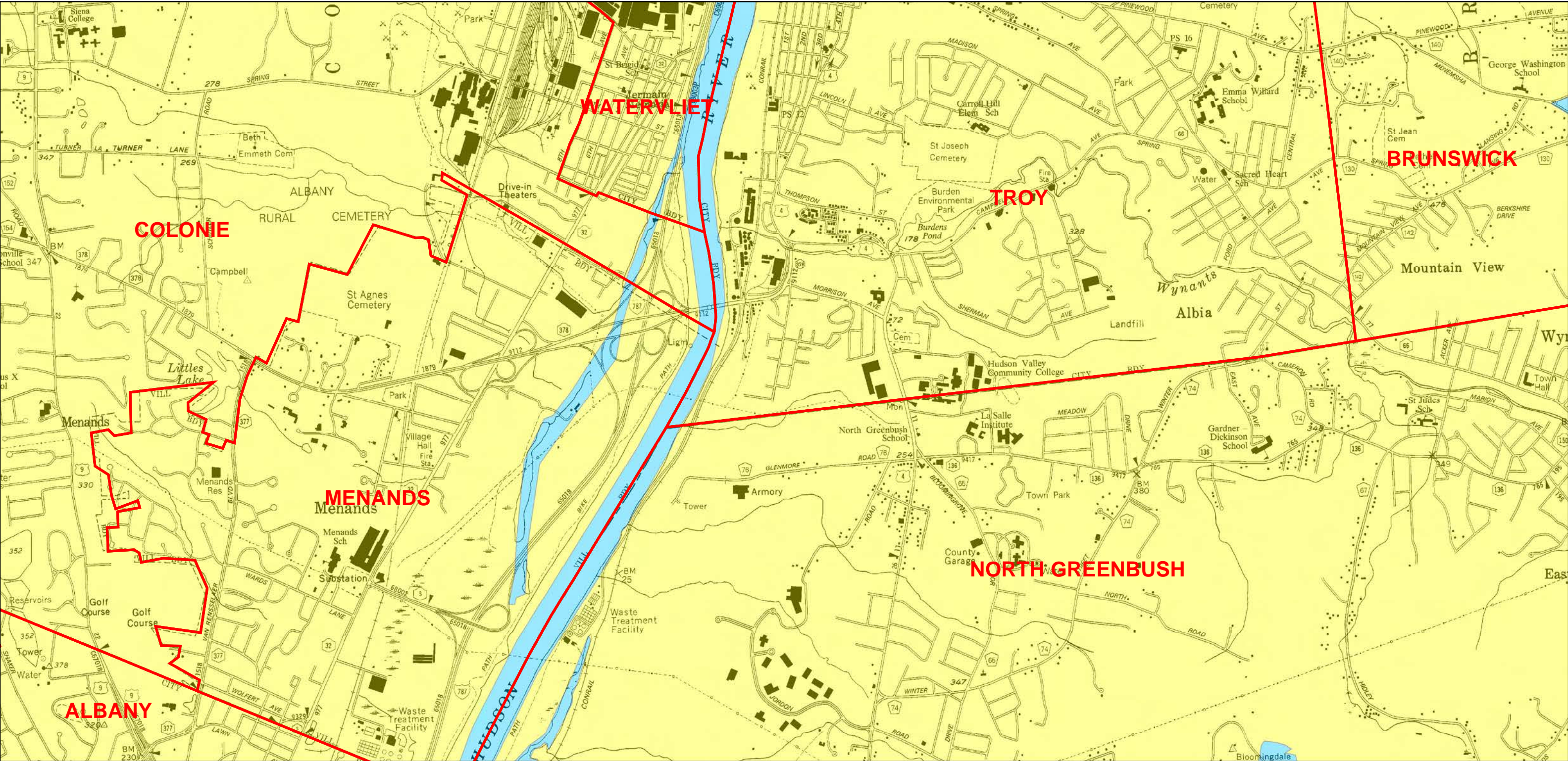
Page 7 of 17



Legend

- Town, Village, or City Boundary for New York State
- Automatically Designated MS4 Boundary
- 2000 Census Urbanized Area (No longer UA based on 2010)
- Additionally Designated 2003
- Additionally Designated 2008
- Additionally Designated 2010
- 2010 and 2000 Census Urbanized Area Overlap
- 2010 Census Urbanized Area (Newly Designated)





Legend

Town, Village, or City Boundary for New York State

Automatically Designated MS4 Boundary

2000 Census Urbanized Area (No longer UA based on 2010)

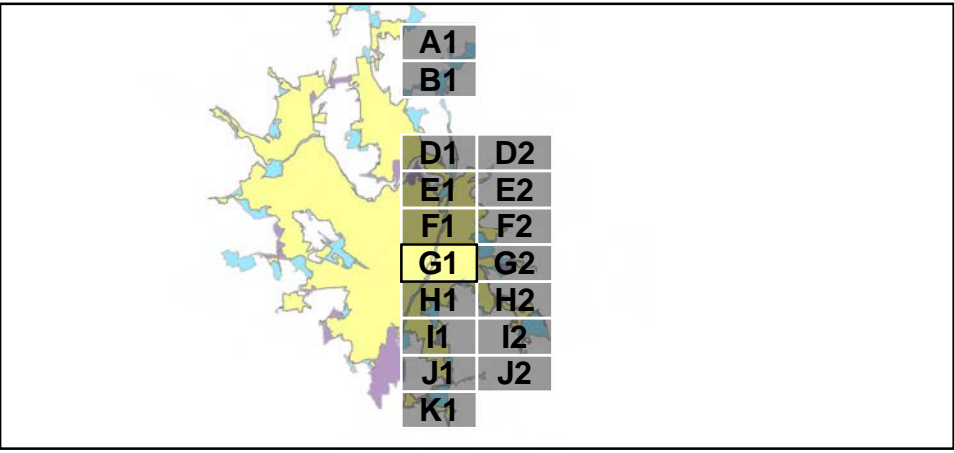
Additionally Designated 2003

Additionally Designated 2008

Additionally Designated 2010

2010 and 2000 Census Urbanized Area Overlap

2010 Census Urbanized Area (Newly Designated)

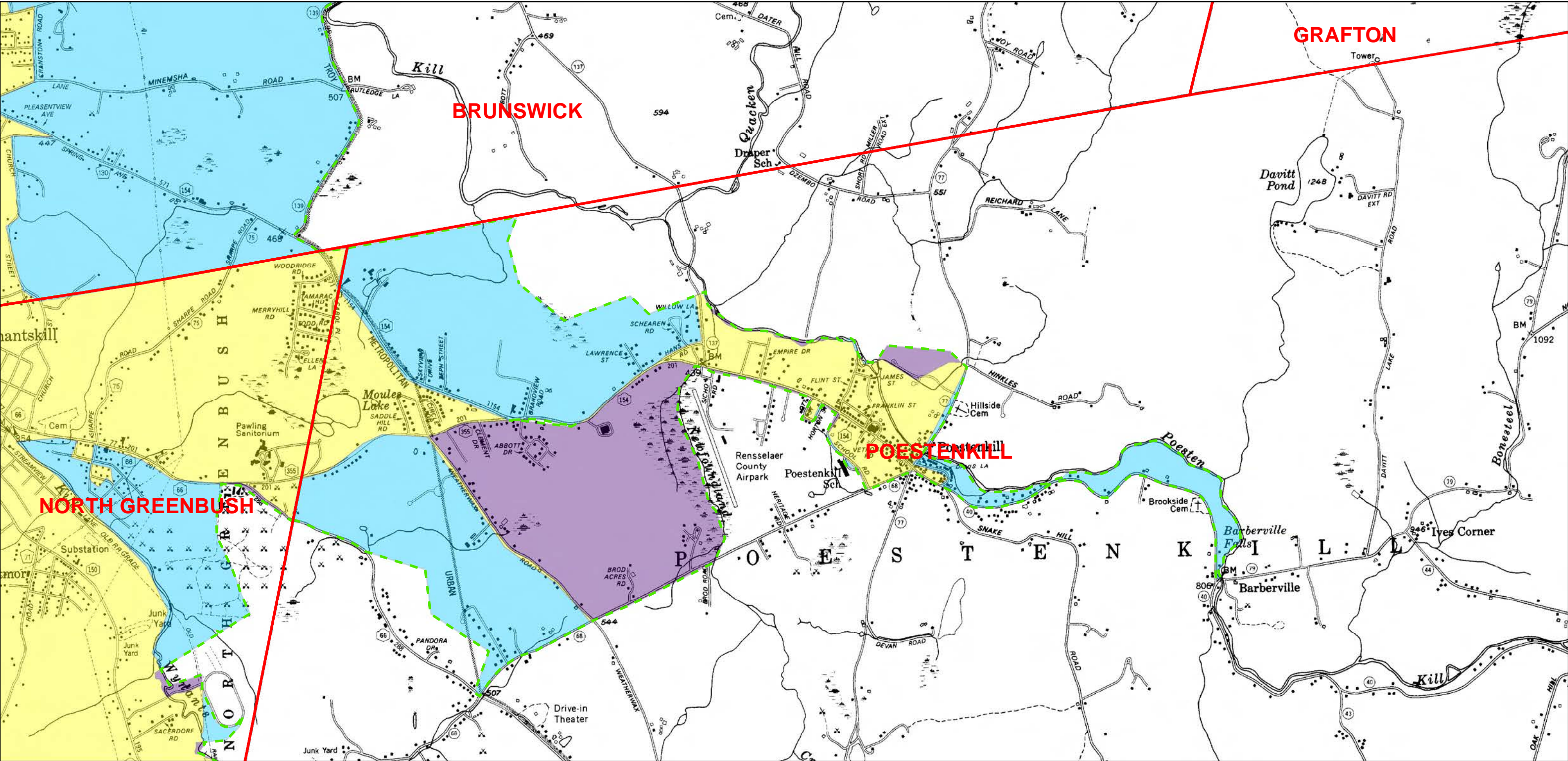


00.250.511.52Miles

N

G1

Page 9 of 17



Legend

Town, Village, or City Boundary for New York State

Automatically Designated MS4 Boundary

2000 Census Urbanized Area (No longer UA based on 2010)

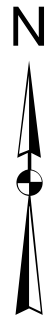
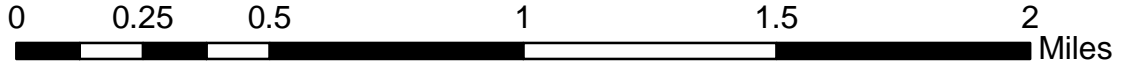
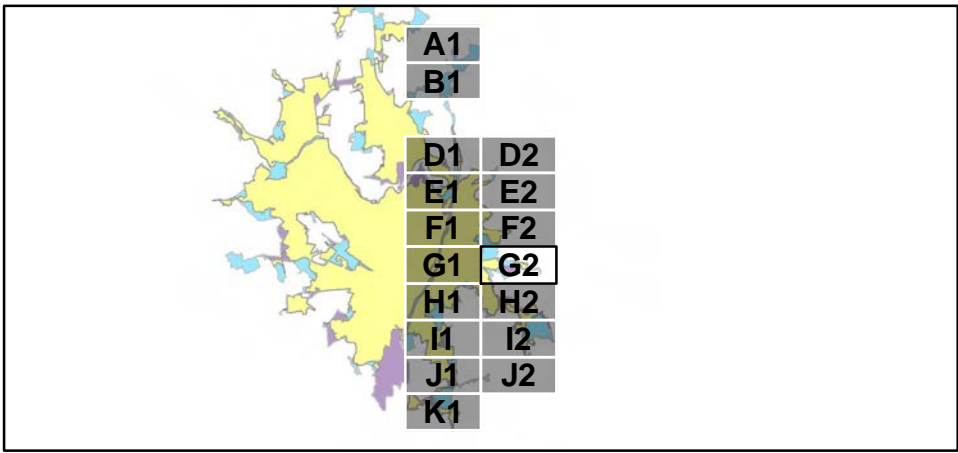
Additionally Designated 2003

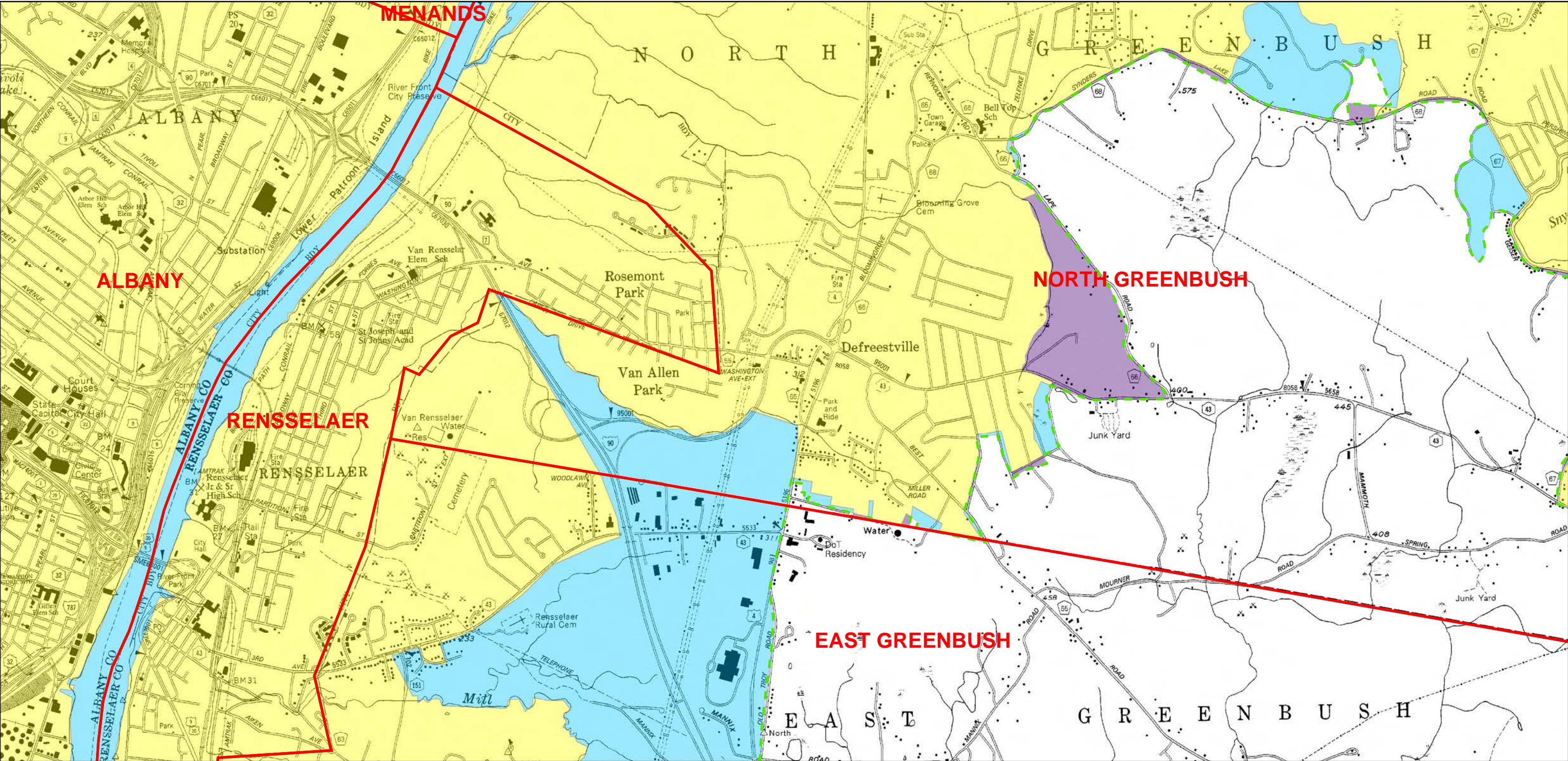
Additionally Designated 2008

Additionally Designated 2010

2010 and 2000 Census Urbanized Area Overlap

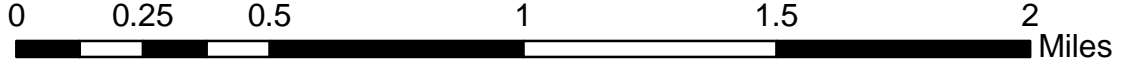
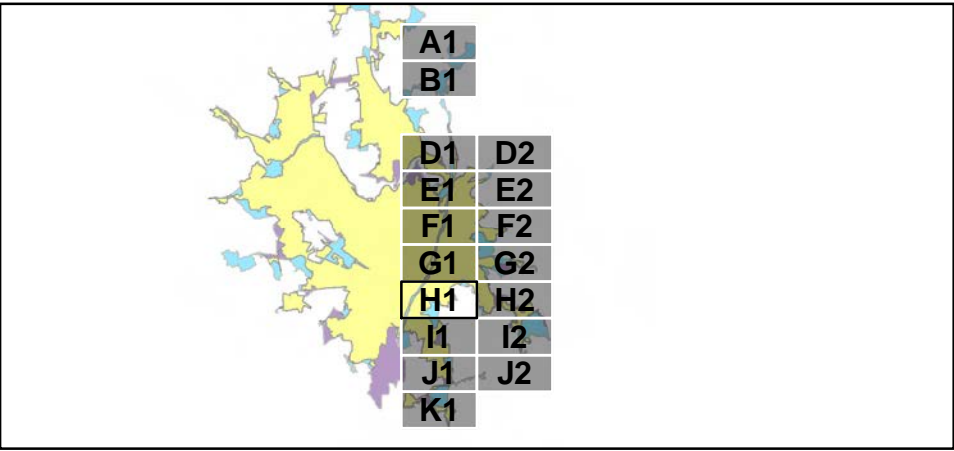
2010 Census Urbanized Area (Newly Designated)

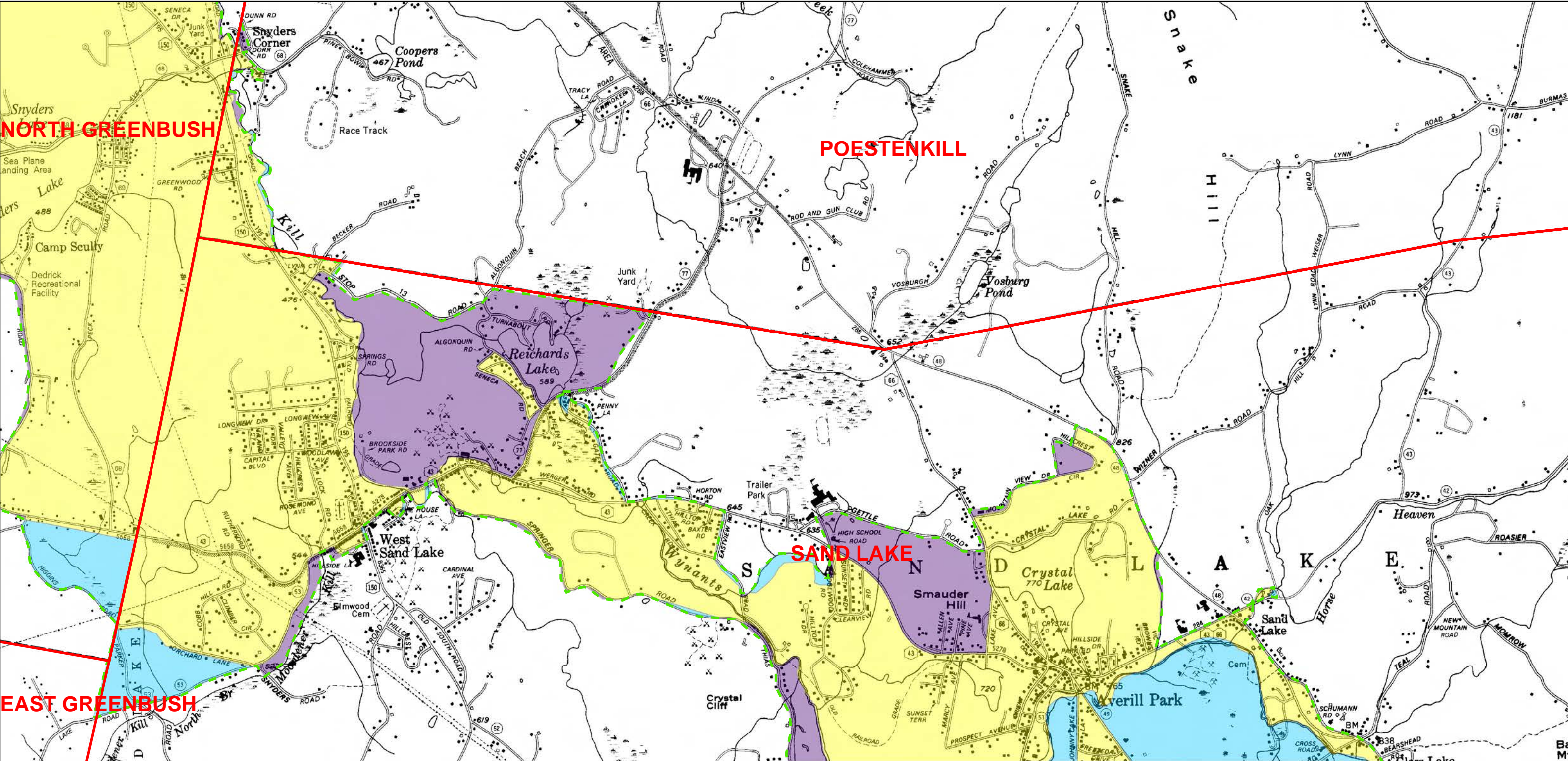




Legend

- Town, Village, or City Boundary for New York State
- Automatically Designated MS4 Boundary
- 2000 Census Urbanized Area (No longer UA based on 2010)
- Additionally Designated 2003
- Additionally Designated 2008
- Additionally Designated 2010
- 2010 and 2000 Census Urbanized Area Overlap
- 2010 Census Urbanized Area (Newly Designated)





Legend

Town, Village, or City Boundary for New York State

Automatically Designated MS4 Boundary

2000 Census Urbanized Area (No longer UA based on 2010)

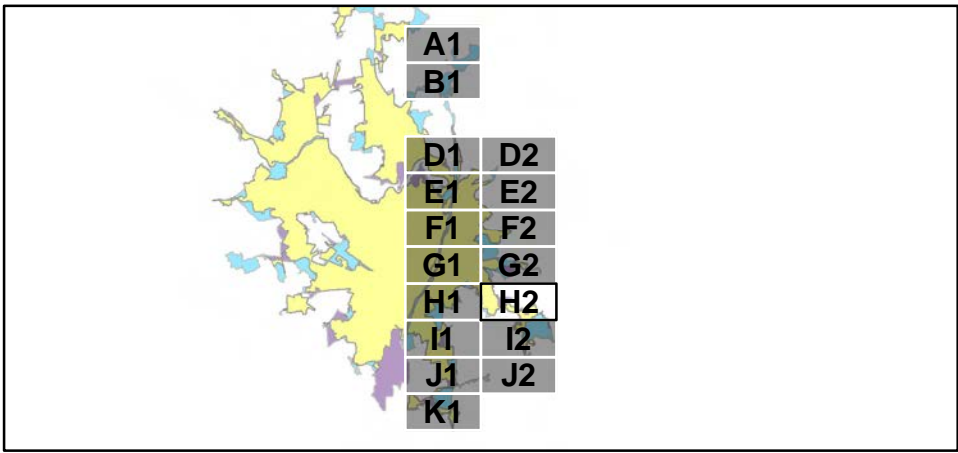
Additionally Designated 2003

Additionally Designated 2008

Additionally Designated 2010

2010 and 2000 Census Urbanized Area Overlap

2010 Census Urbanized Area (Newly Designated)

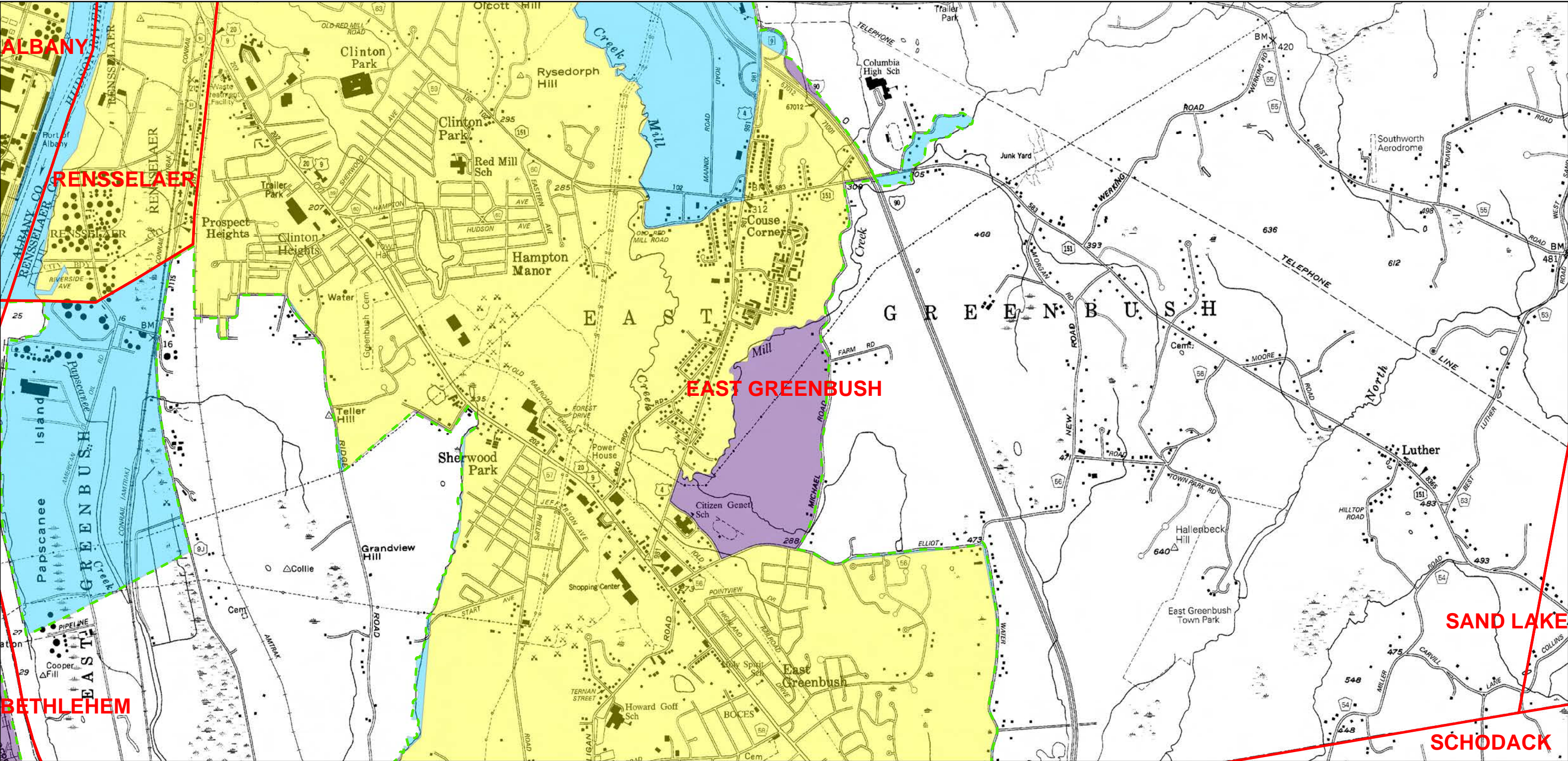


00.250.511.52Miles

N

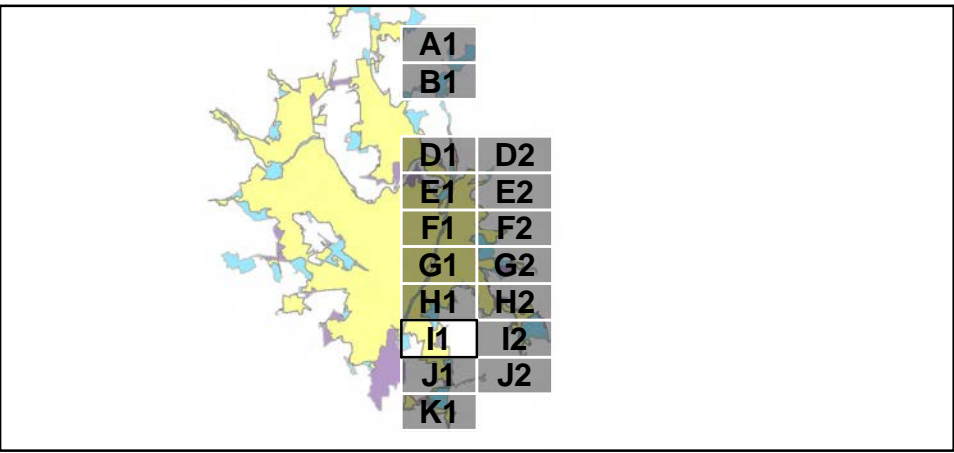
H2

Page 12 of 17



Legend

- Town, Village, or City Boundary for New York State
- Automatically Designated MS4 Boundary
- 2000 Census Urbanized Area (No longer UA based on 2010)
- Additionally Designated 2003
- Additionally Designated 2008
- Additionally Designated 2010
- 2010 and 2000 Census Urbanized Area Overlap
- 2010 Census Urbanized Area (Newly Designated)

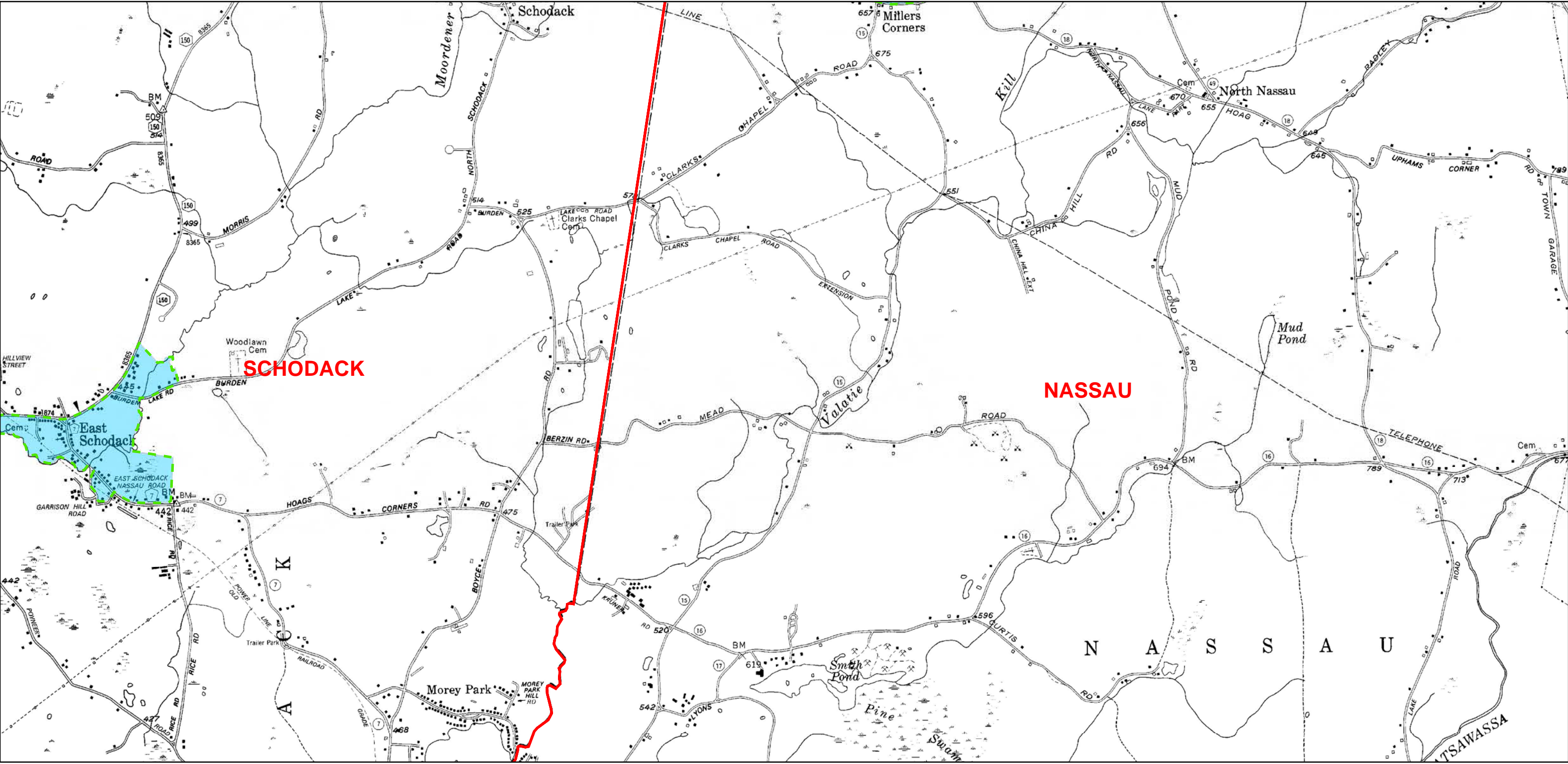


0 0.25 0.5 1 1.5 2 Miles

N

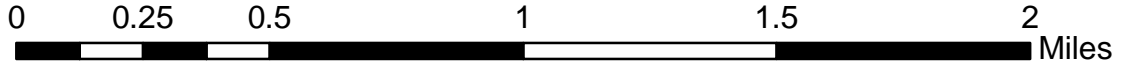
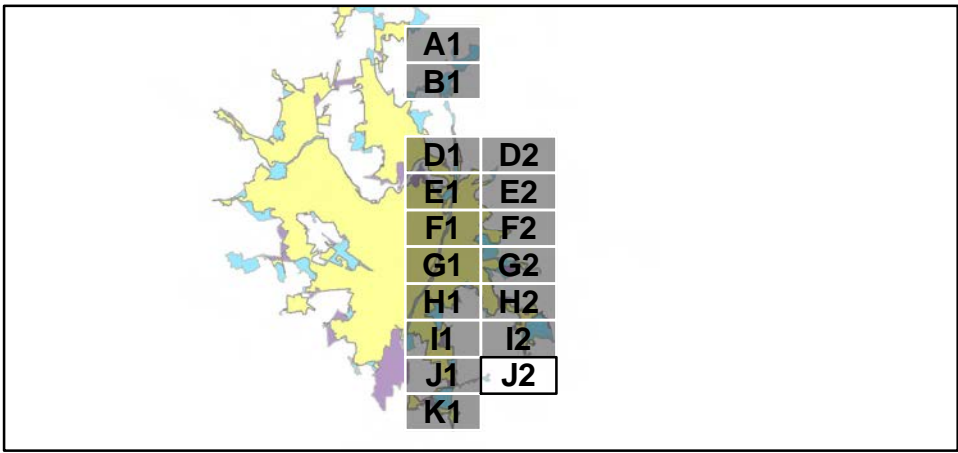
I1

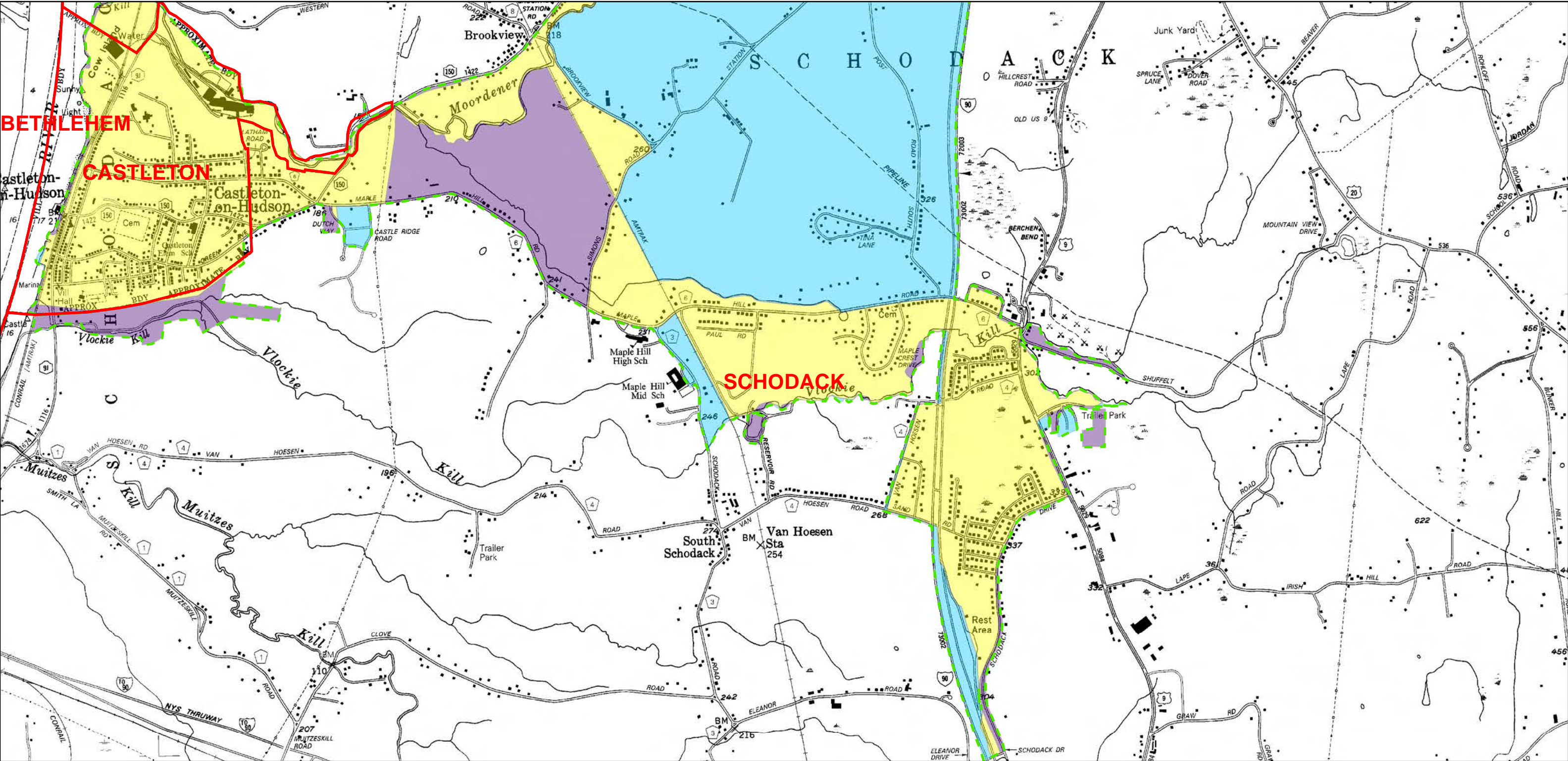
Page 13 of 17



Legend

- Town, Village, or City Boundary for New York State
- Automatically Designated MS4 Boundary
- 2000 Census Urbanized Area (No longer UA based on 2010)
- Additionally Designated 2003
- Additionally Designated 2008
- Additionally Designated 2010
- 2010 and 2000 Census Urbanized Area Overlap
- 2010 Census Urbanized Area (Newly Designated)





Legend

Town, Village, or City Boundary for New York State

Automatically Designated MS4 Boundary

2000 Census Urbanized Area (No longer UA based on 2010)

Additionally Designated 2003

Additionally Designated 2008

Additionally Designated 2010

2010 and 2000 Census Urbanized Area Overlap

2010 Census Urbanized Area (Newly Designated)

