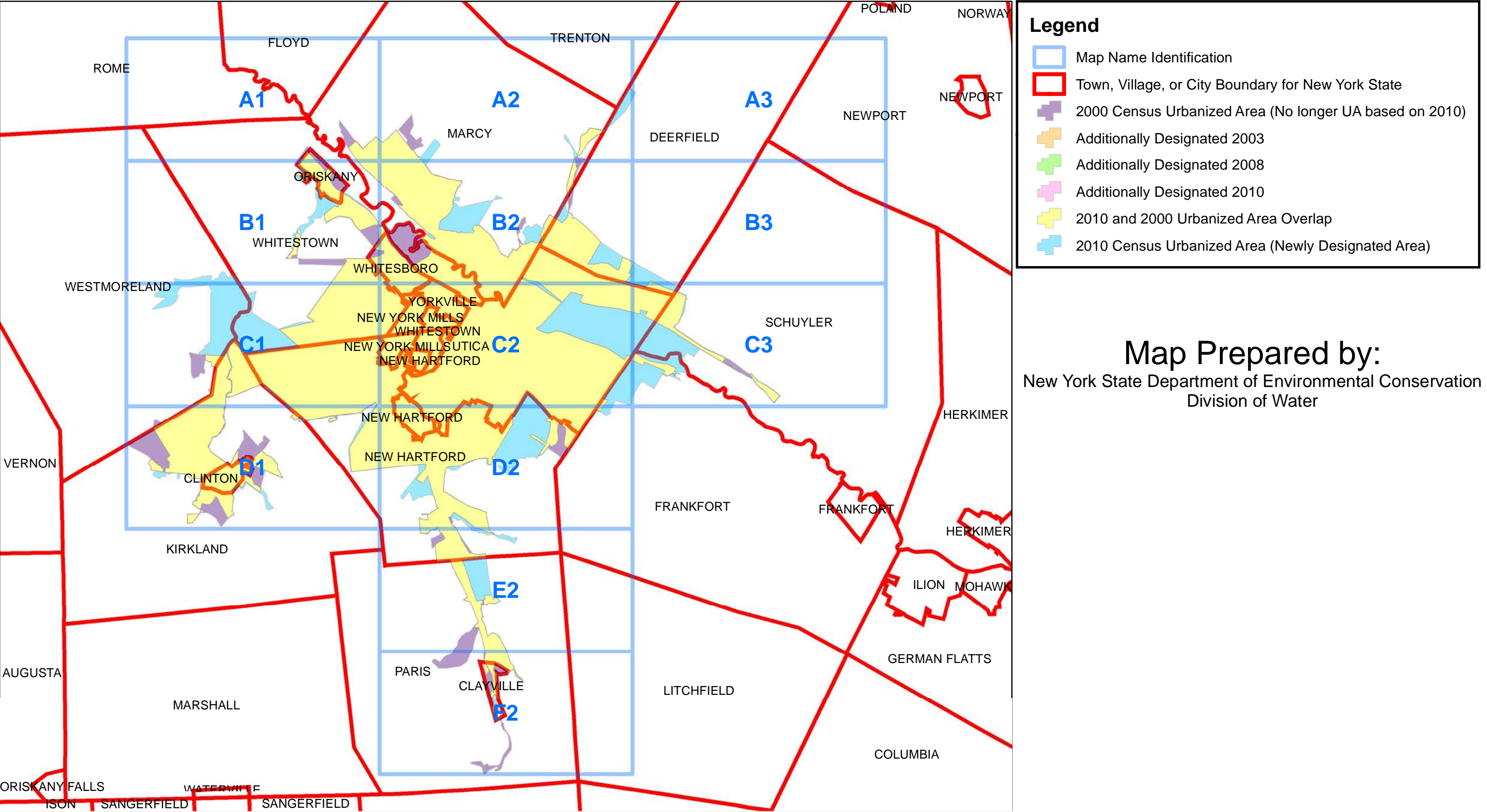
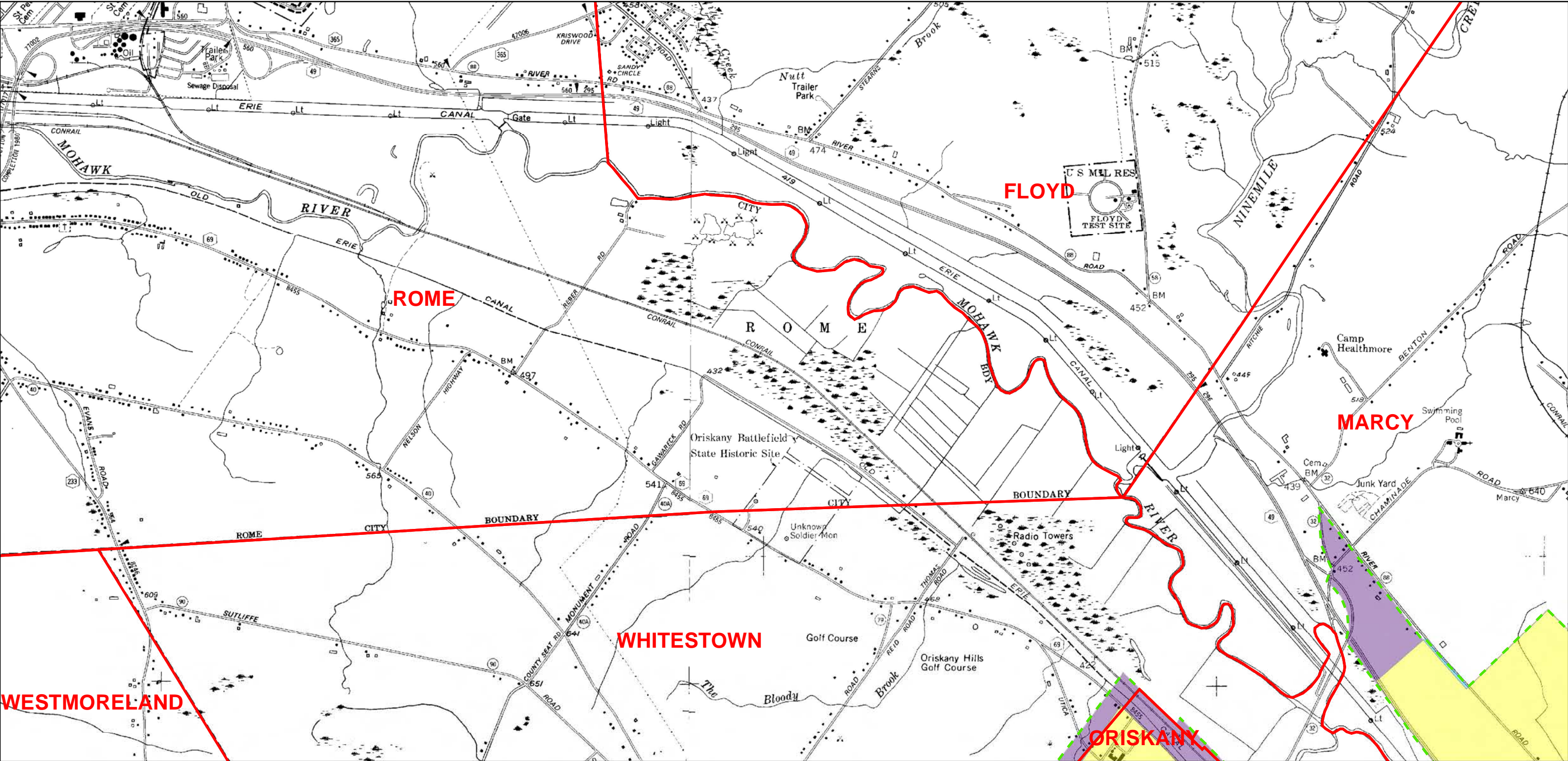


# Oneida and Herkimer County Municipal Separate Storm Sewer System (MS4) Minimal Regulated Boundaries

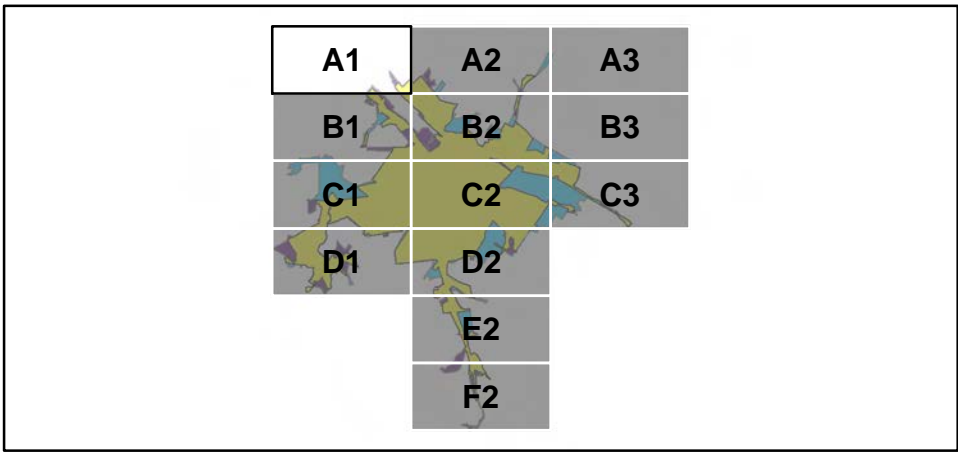






**Legend**

- Town, Village, or City Boundary for New York State
- Automatically Designated MS4 Boundary
- 2000 Census Urbanized Area (No longer UA based on 2010)
- Additionally Designated 2003
- Additionally Designated 2008
- Additionally Designated 2010
- 2010 and 2000 Census Urbanized Area Overlap
- 2010 Census Urbanized Area (Newly Designated)



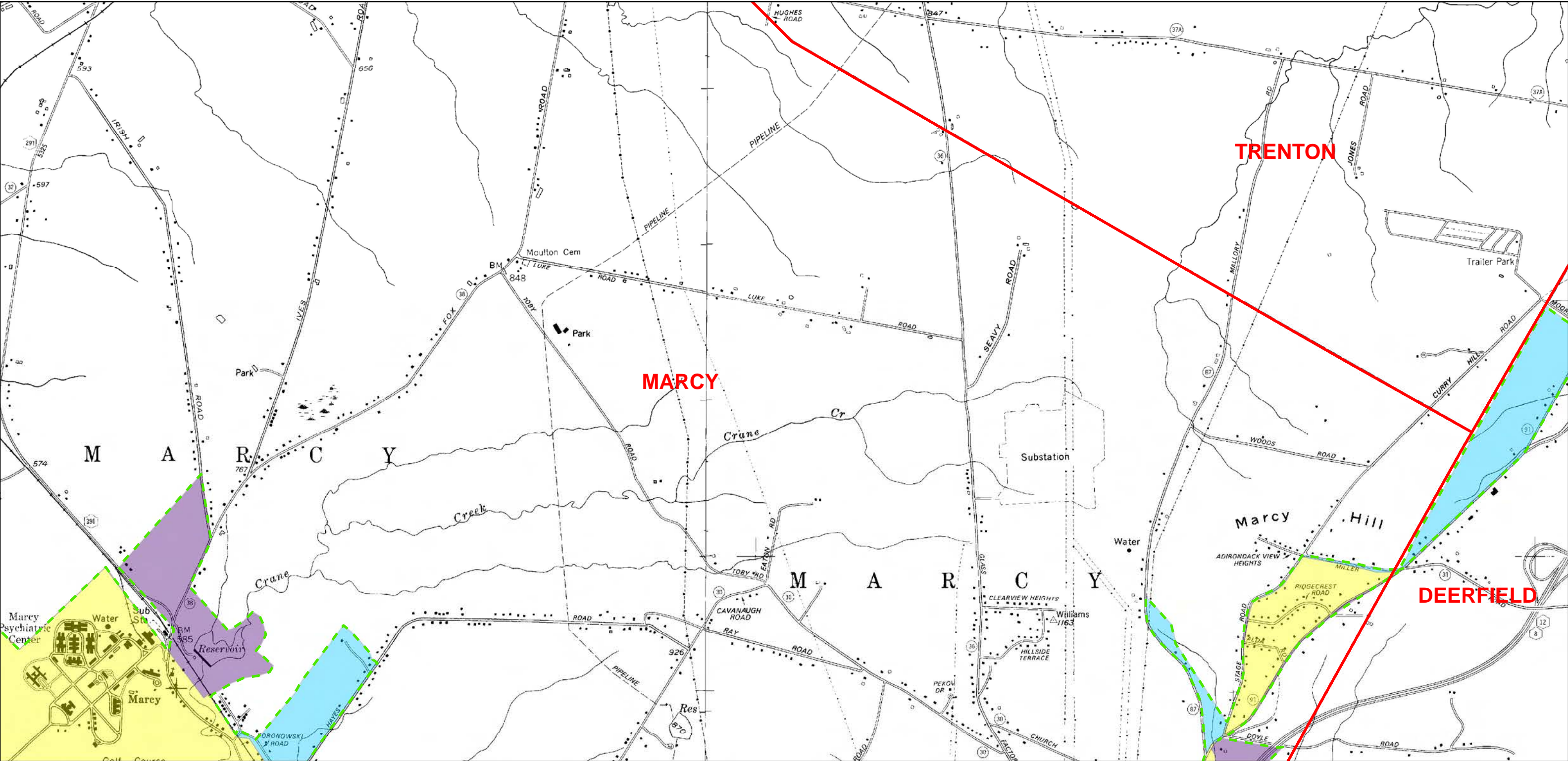
0 0.25 0.5 1 1.5 2 Miles

N

A1

Page 1 of 13





**Legend**

Town, Village, or City Boundary for New York State

Automatically Designated MS4 Boundary

2000 Census Urbanized Area (No longer UA based on 2010)

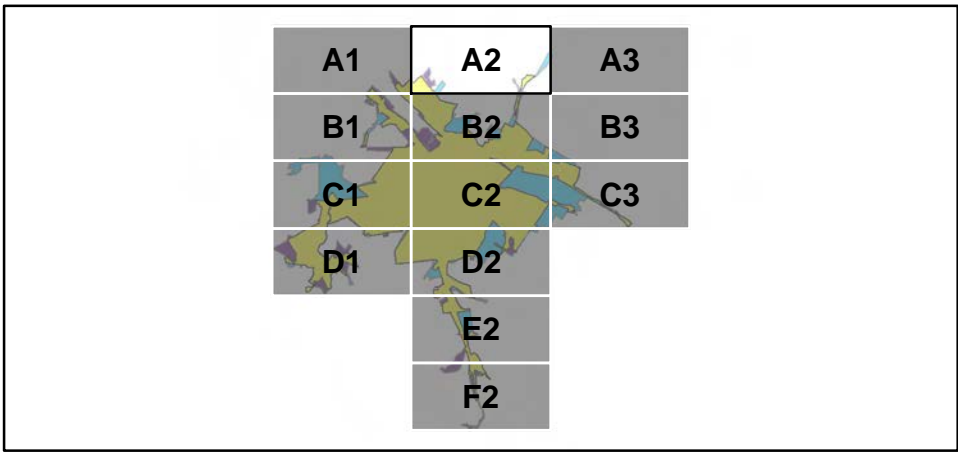
Additionally Designated 2003

Additionally Designated 2008

Additionally Designated 2010

2010 and 2000 Census Urbanized Area Overlap

2010 Census Urbanized Area (Newly Designated)

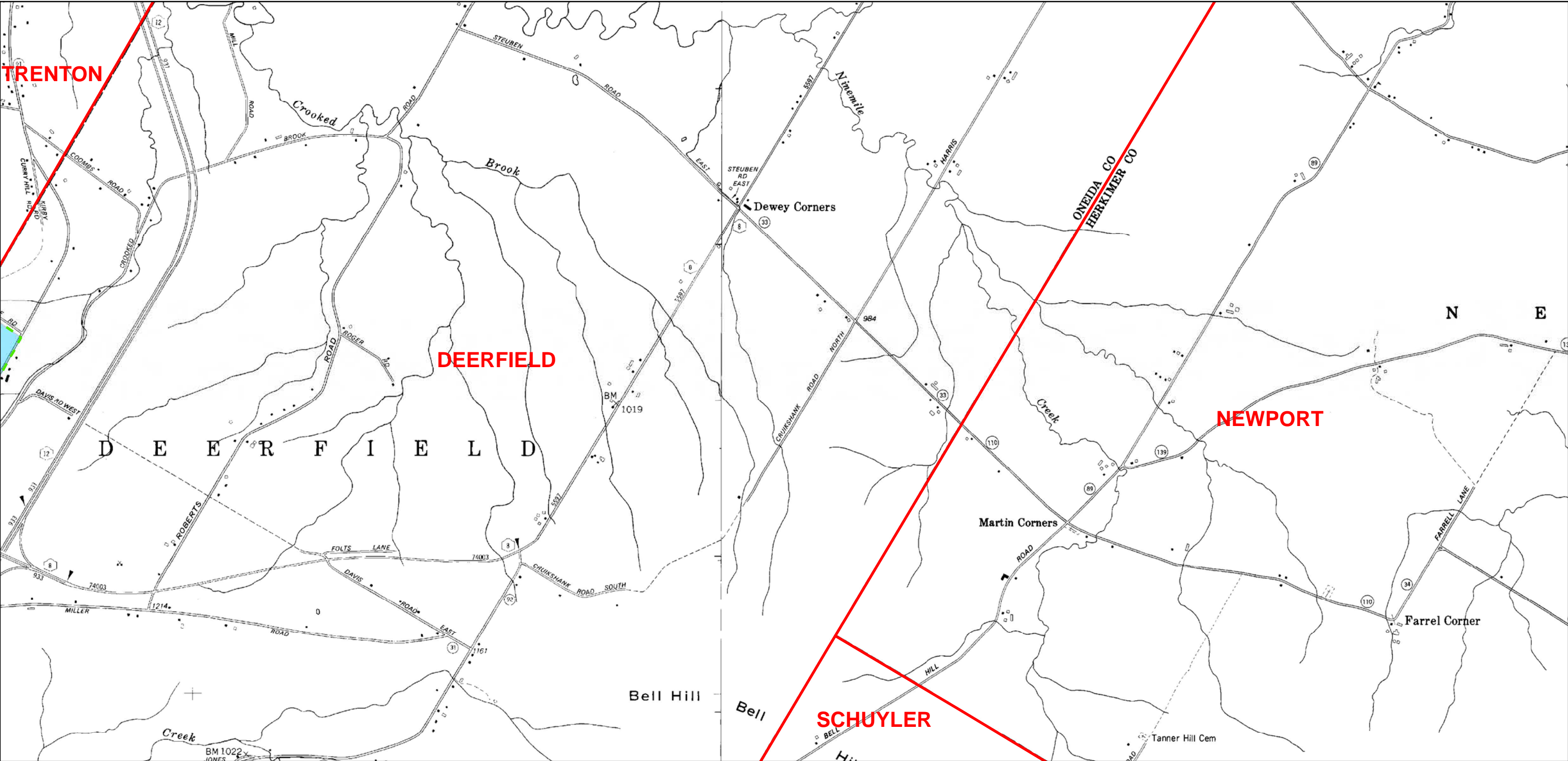


00.250.511.52Miles

N

A2

Page 2 of 13



**Legend**

Town, Village, or City Boundary for New York State

Automatically Designated MS4 Boundary

2000 Census Urbanized Area (No longer UA based on 2010)

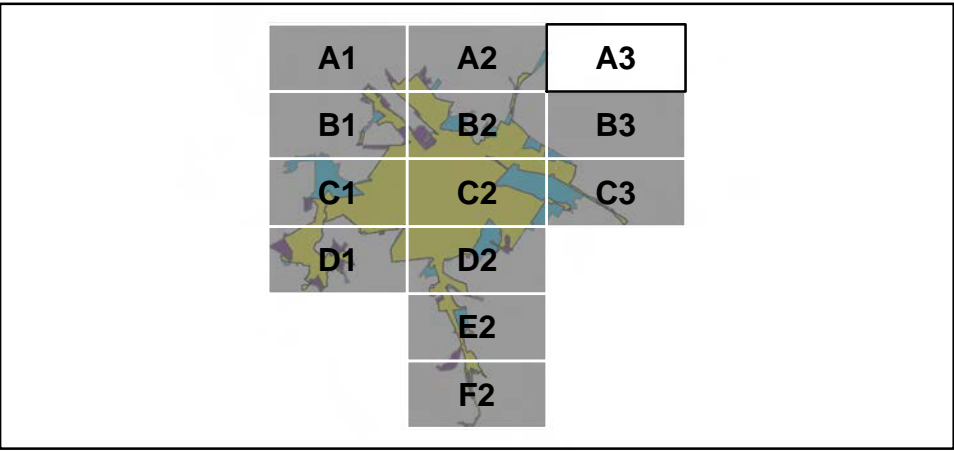
Additionally Designated 2003

Additionally Designated 2008

Additionally Designated 2010

2010 and 2000 Census Urbanized Area Overlap

2010 Census Urbanized Area (Newly Designated)



00.250.511.52

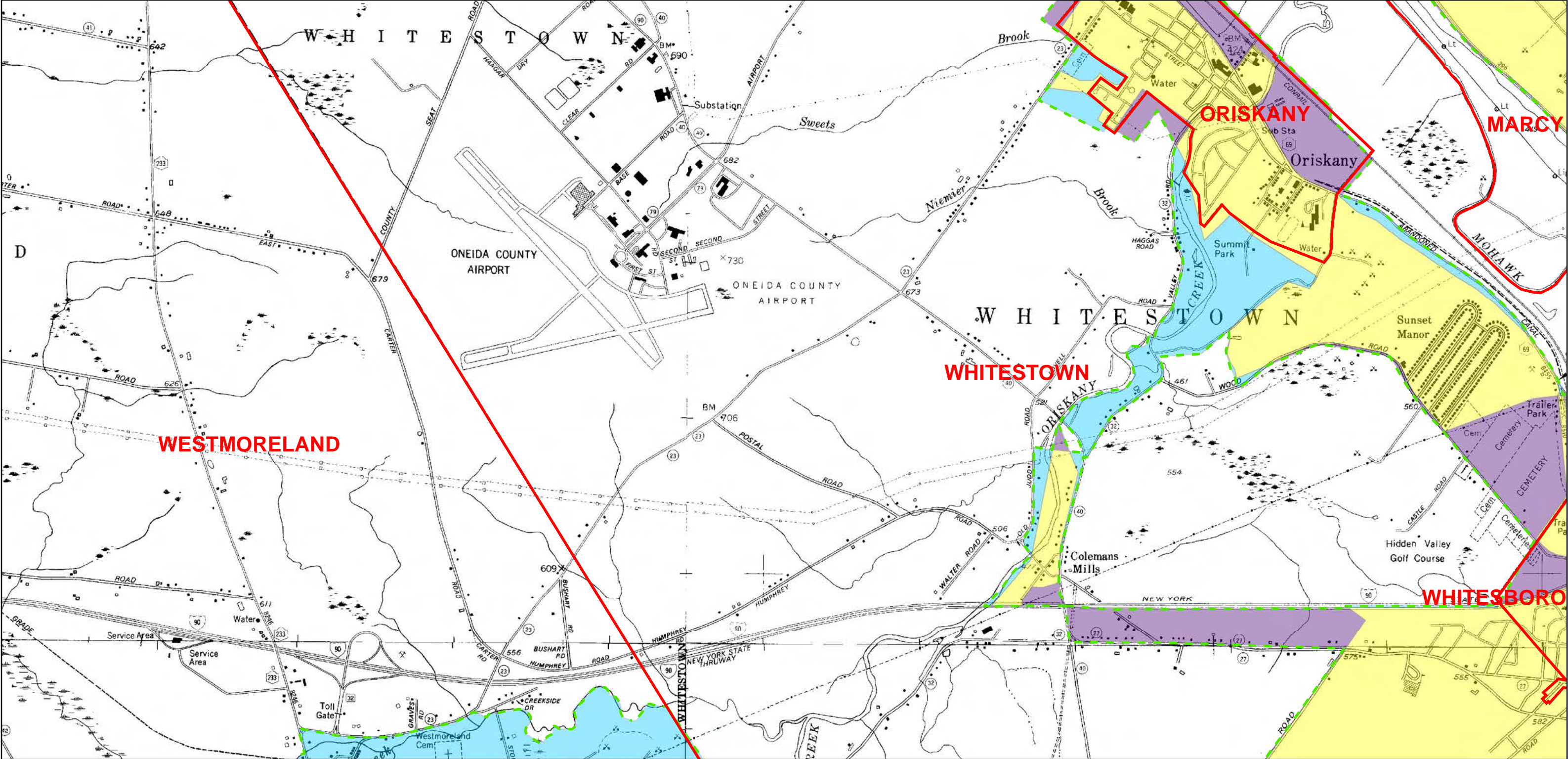
Miles

N

A3

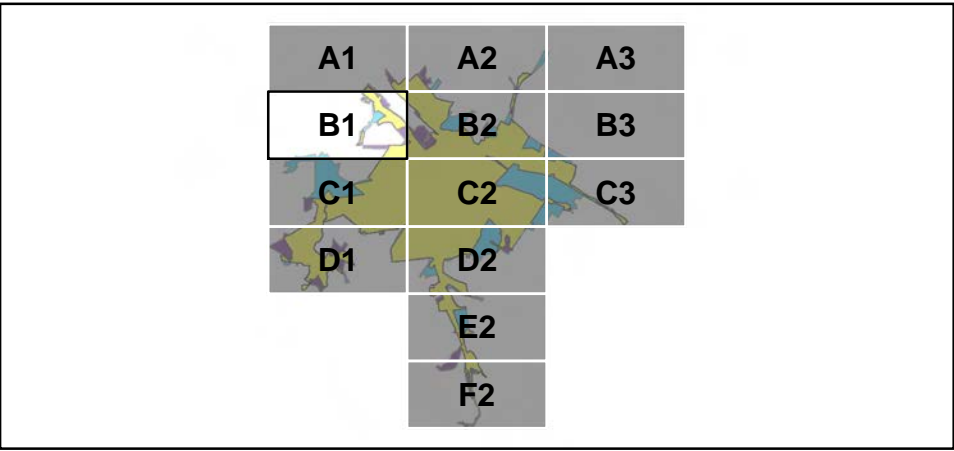
Page 3 of 13





**Legend**

- Town, Village, or City Boundary for New York State
- Automatically Designated MS4 Boundary
- 2000 Census Urbanized Area (No longer UA based on 2010)
- Additionally Designated 2003
- Additionally Designated 2008
- Additionally Designated 2010
- 2010 and 2000 Census Urbanized Area Overlap
- 2010 Census Urbanized Area (Newly Designated)



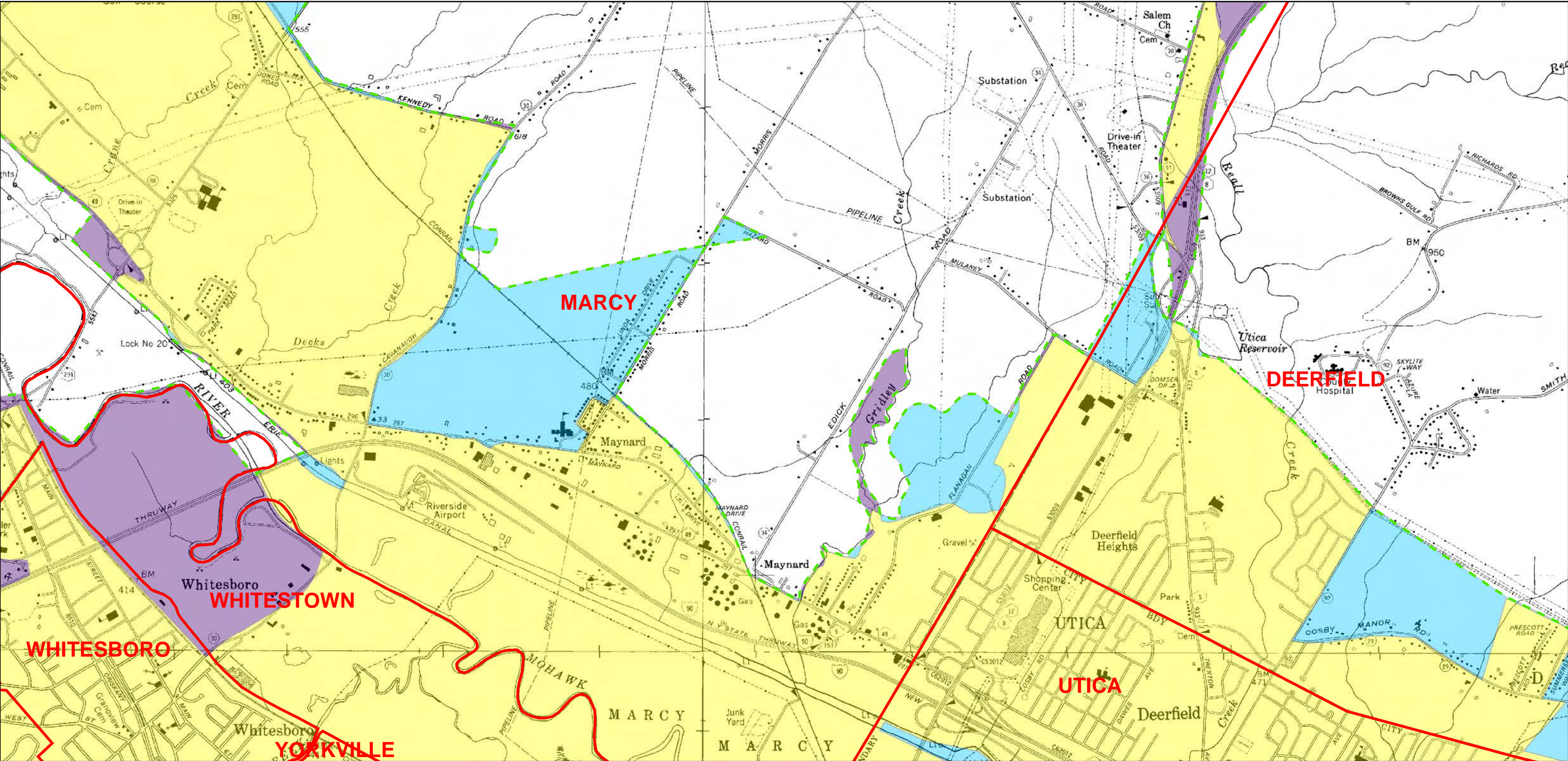
0 0.25 0.5 1 1.5 2 Miles

N

B1

Page 4 of 13





**Legend**

Town, Village, or City Boundary for New York State

Automatically Designated MS4 Boundary

2000 Census Urbanized Area (No longer UA based on 2010)

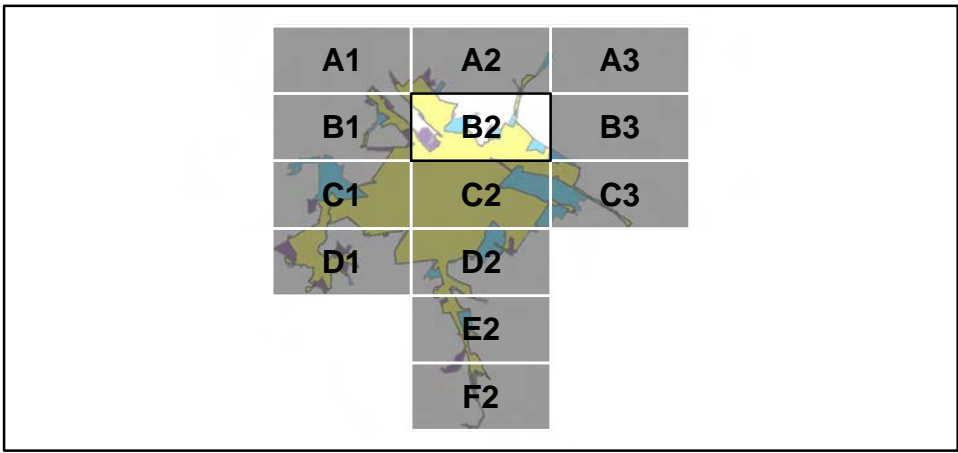
Additionally Designated 2003

Additionally Designated 2008

Additionally Designated 2010

2010 and 2000 Census Urbanized Area Overlap

2010 Census Urbanized Area (Newly Designated)



00.250.511.52

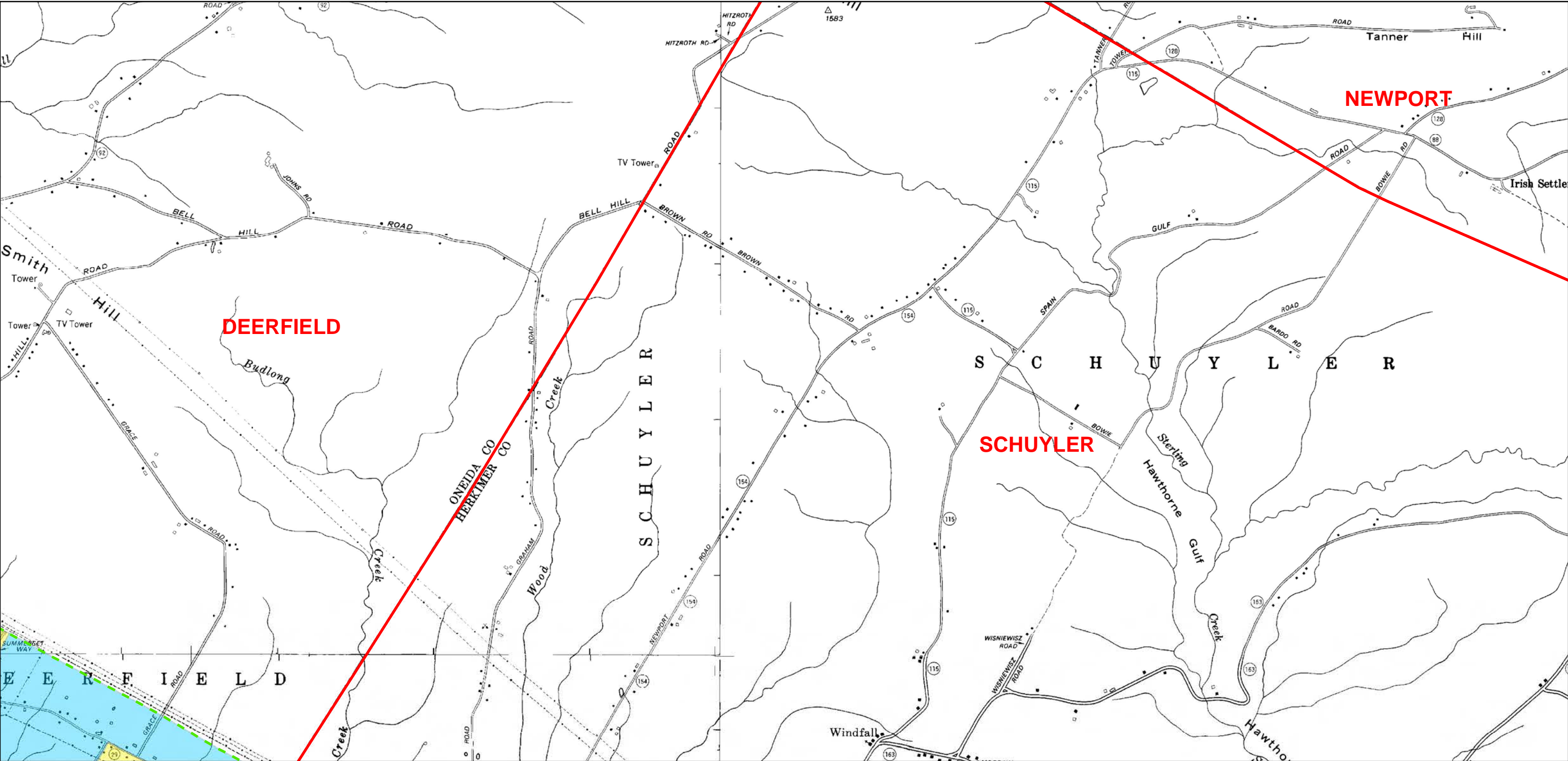
Miles

N

B2

Page 5 of 13





**Legend**

Town, Village, or City Boundary for New York State

Automatically Designated MS4 Boundary

2000 Census Urbanized Area (No longer UA based on 2010)

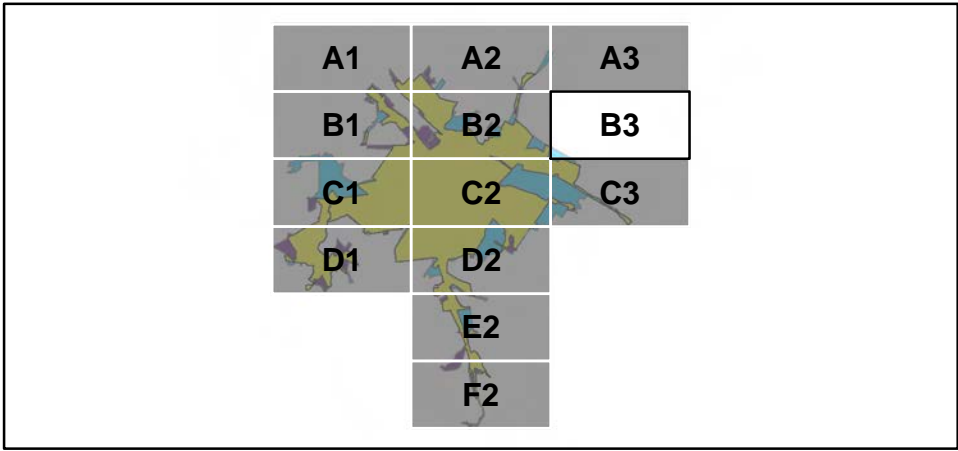
Additionally Designated 2003

Additionally Designated 2008

Additionally Designated 2010

2010 and 2000 Census Urbanized Area Overlap

2010 Census Urbanized Area (Newly Designated)



00.250.511.52

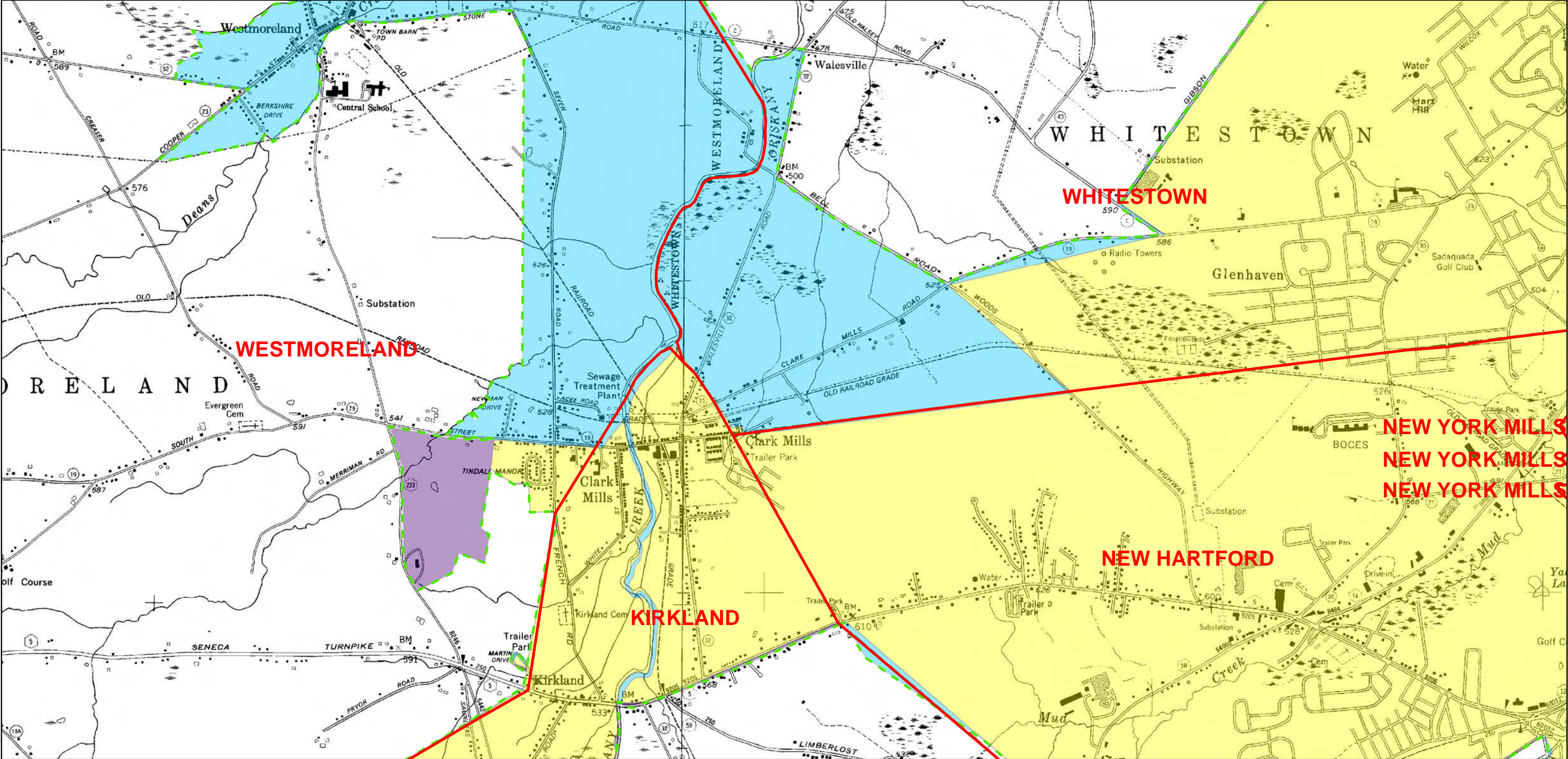
Miles

N

B3

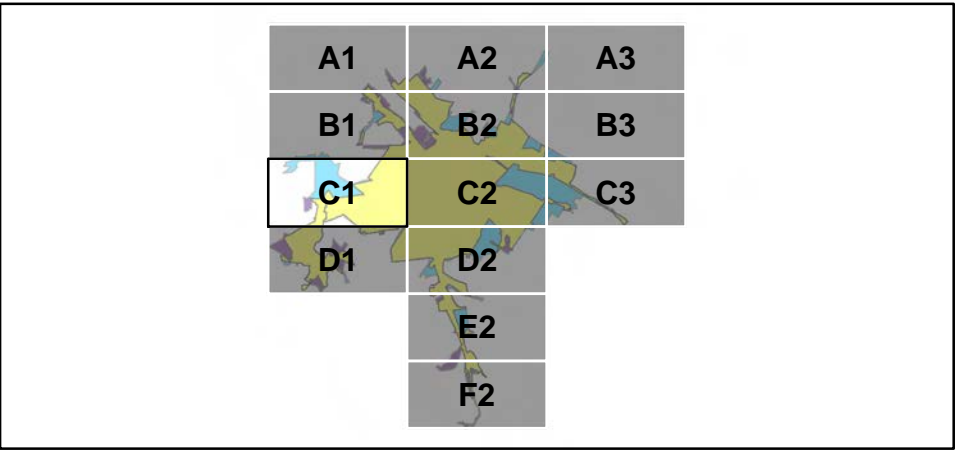
Page 6 of 13





**Legend**

- Town, Village, or City Boundary for New York State
- Automatically Designated MS4 Boundary
- 2000 Census Urbanized Area (No longer UA based on 2010)
- Additionally Designated 2003
- Additionally Designated 2008
- Additionally Designated 2010
- 2010 and 2000 Census Urbanized Area Overlap
- 2010 Census Urbanized Area (Newly Designated)



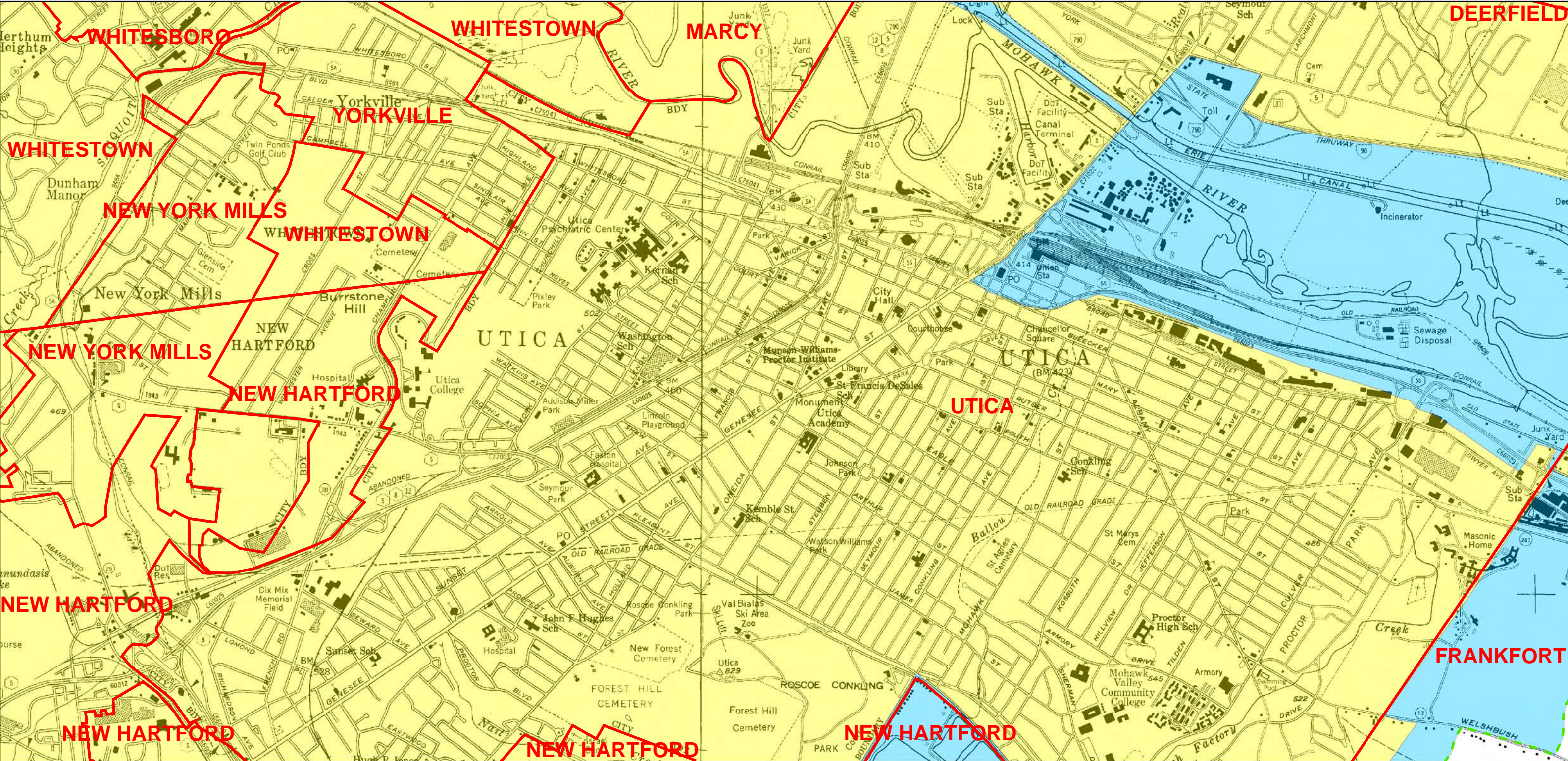
0 0.25 0.5 1 1.5 2 Miles

N

C1

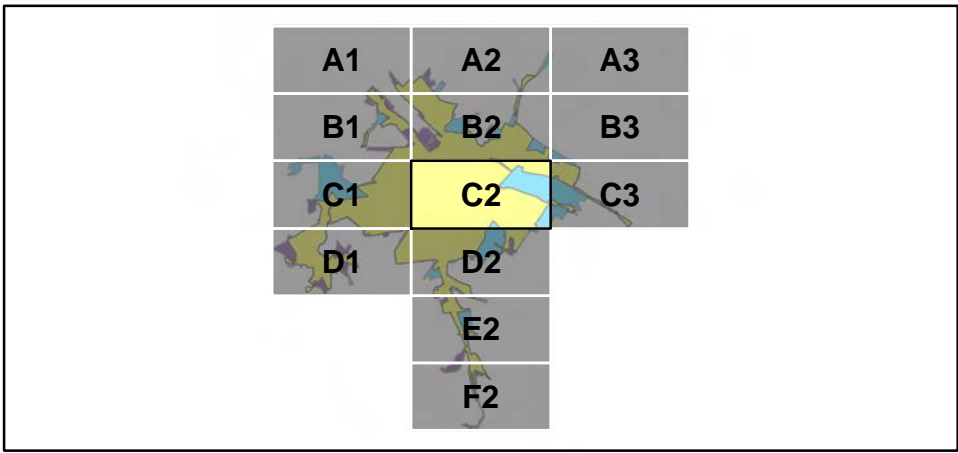
Page 7 of 13





**Legend**

- Town, Village, or City Boundary for New York State
- Automatically Designated MS4 Boundary
- 2000 Census Urbanized Area (No longer UA based on 2010)
- Additionally Designated 2003
- Additionally Designated 2008
- Additionally Designated 2010
- 2010 and 2000 Census Urbanized Area Overlap
- 2010 Census Urbanized Area (Newly Designated)



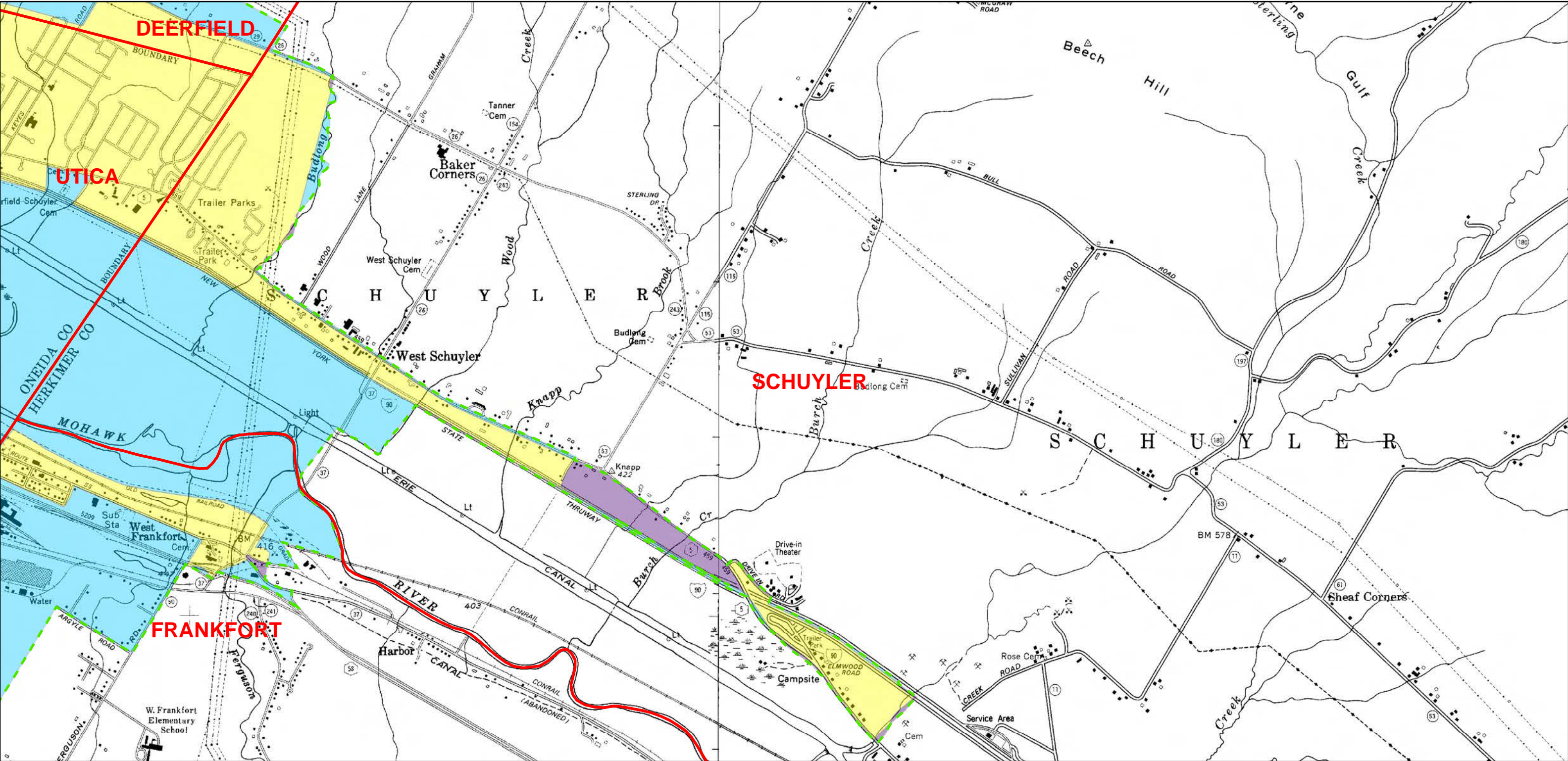
0 0.25 0.5 1 1.5 2 Miles

N

C2

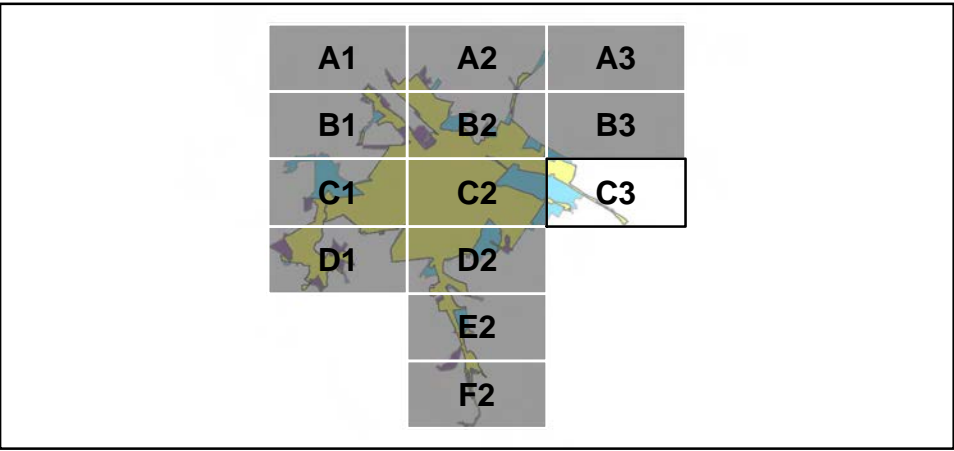
Page 8 of 13





**Legend**

- Town, Village, or City Boundary for New York State
- Automatically Designated MS4 Boundary
- 2000 Census Urbanized Area (No longer UA based on 2010)
- Additionally Designated 2003
- Additionally Designated 2008
- Additionally Designated 2010
- 2010 and 2000 Census Urbanized Area Overlap
- 2010 Census Urbanized Area (Newly Designated)



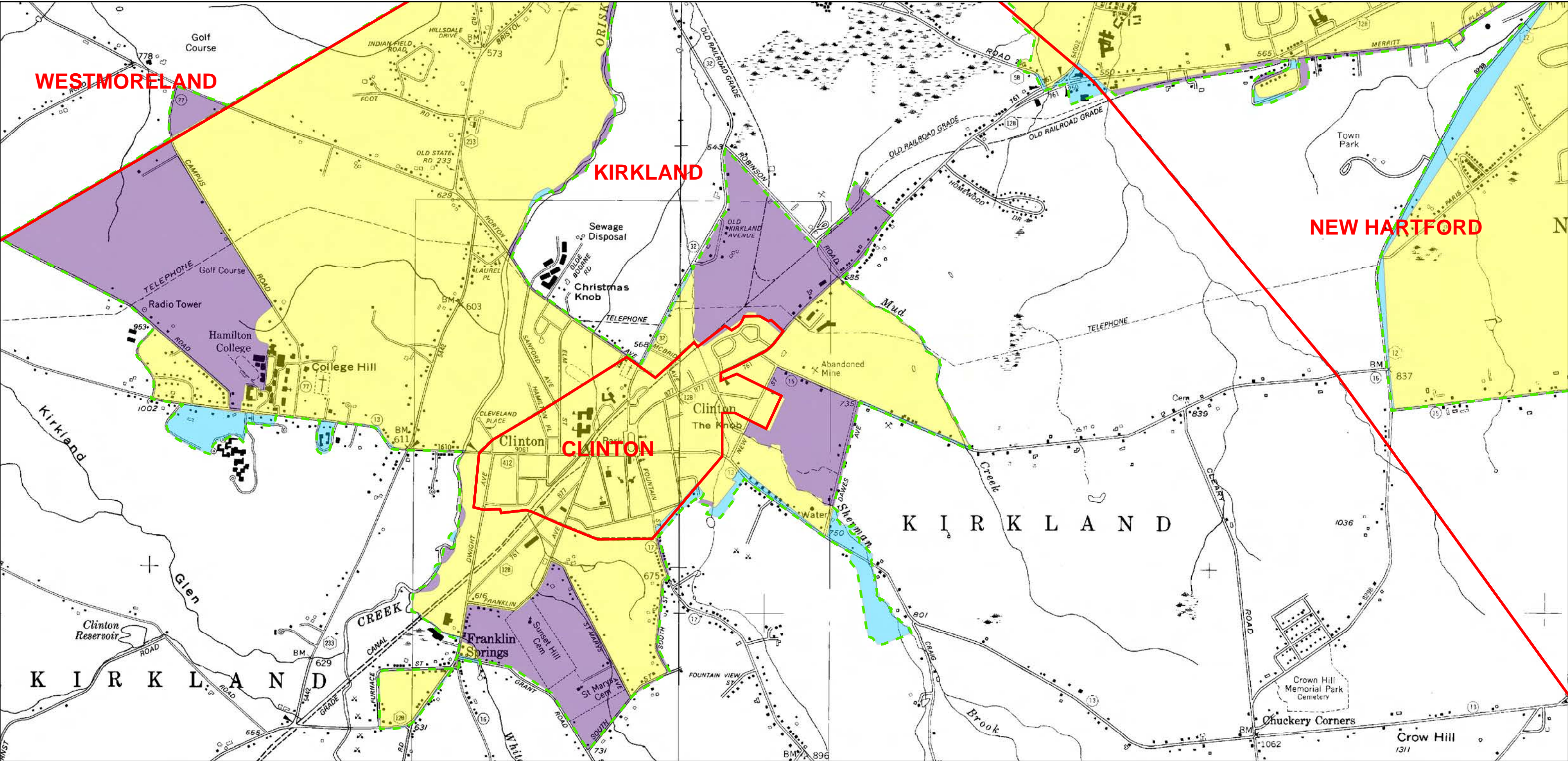
0 0.25 0.5 1 1.5 2 Miles

N

C3

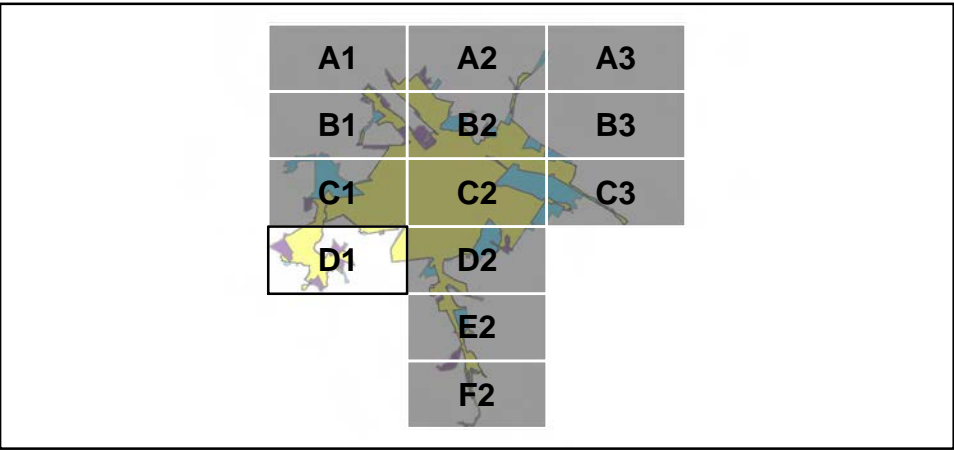
Page 9 of 13





**Legend**

- Town, Village, or City Boundary for New York State
- Automatically Designated MS4 Boundary
- 2000 Census Urbanized Area (No longer UA based on 2010)
- Additionally Designated 2003
- Additionally Designated 2008
- Additionally Designated 2010
- 2010 and 2000 Census Urbanized Area Overlap
- 2010 Census Urbanized Area (Newly Designated)



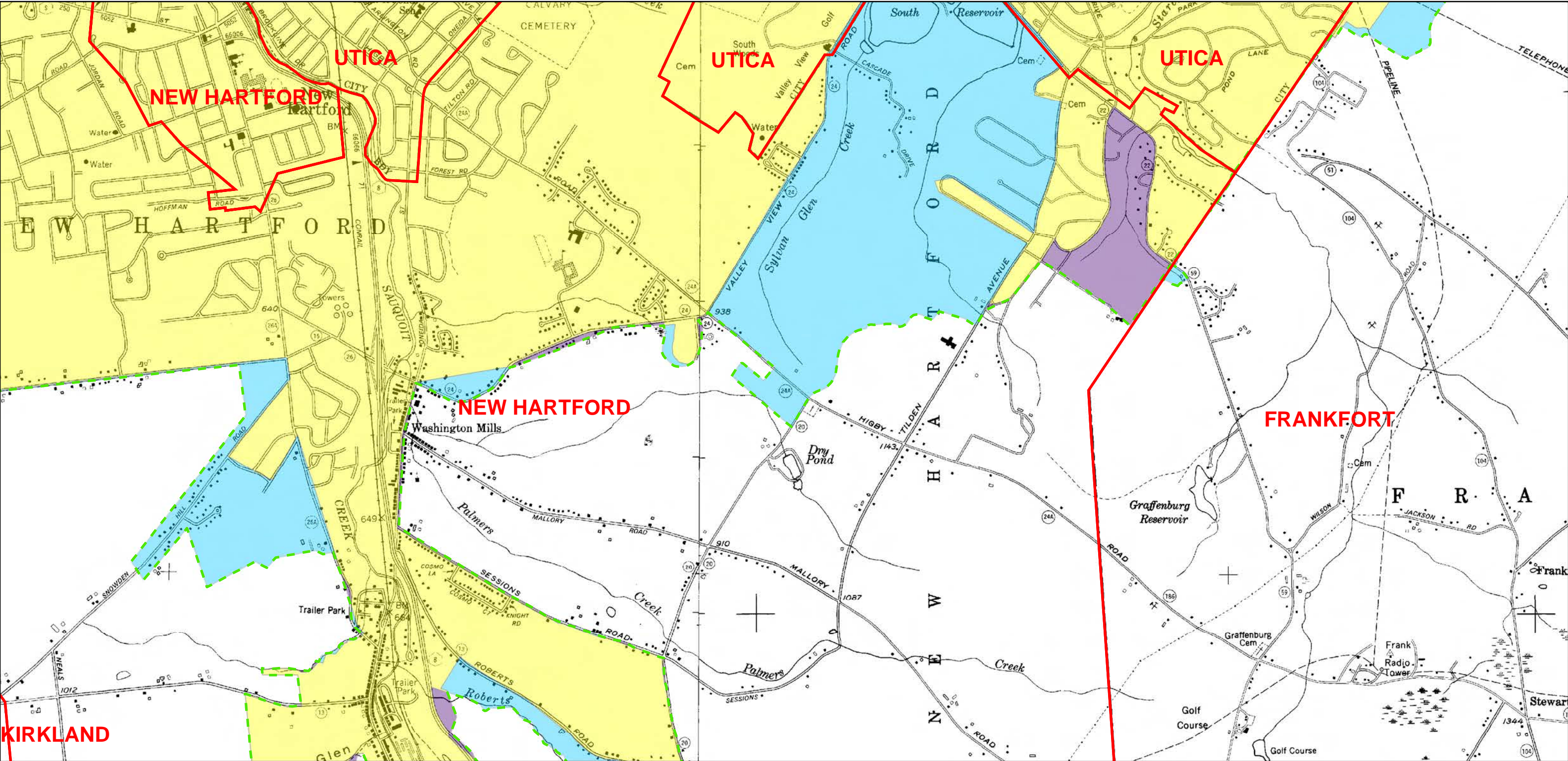
0 0.25 0.5 1 1.5 2 Miles

N

**D1**

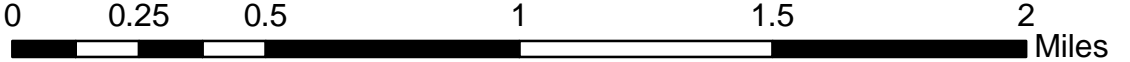
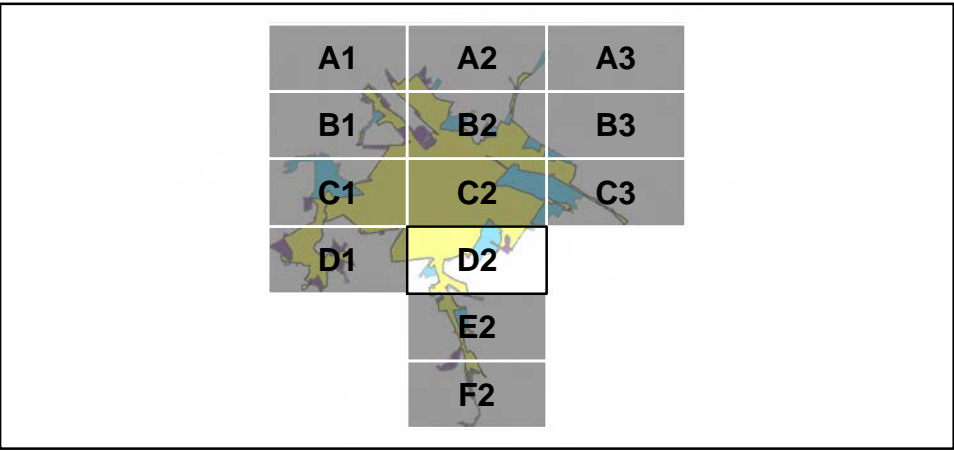
**Page 10 of 13**



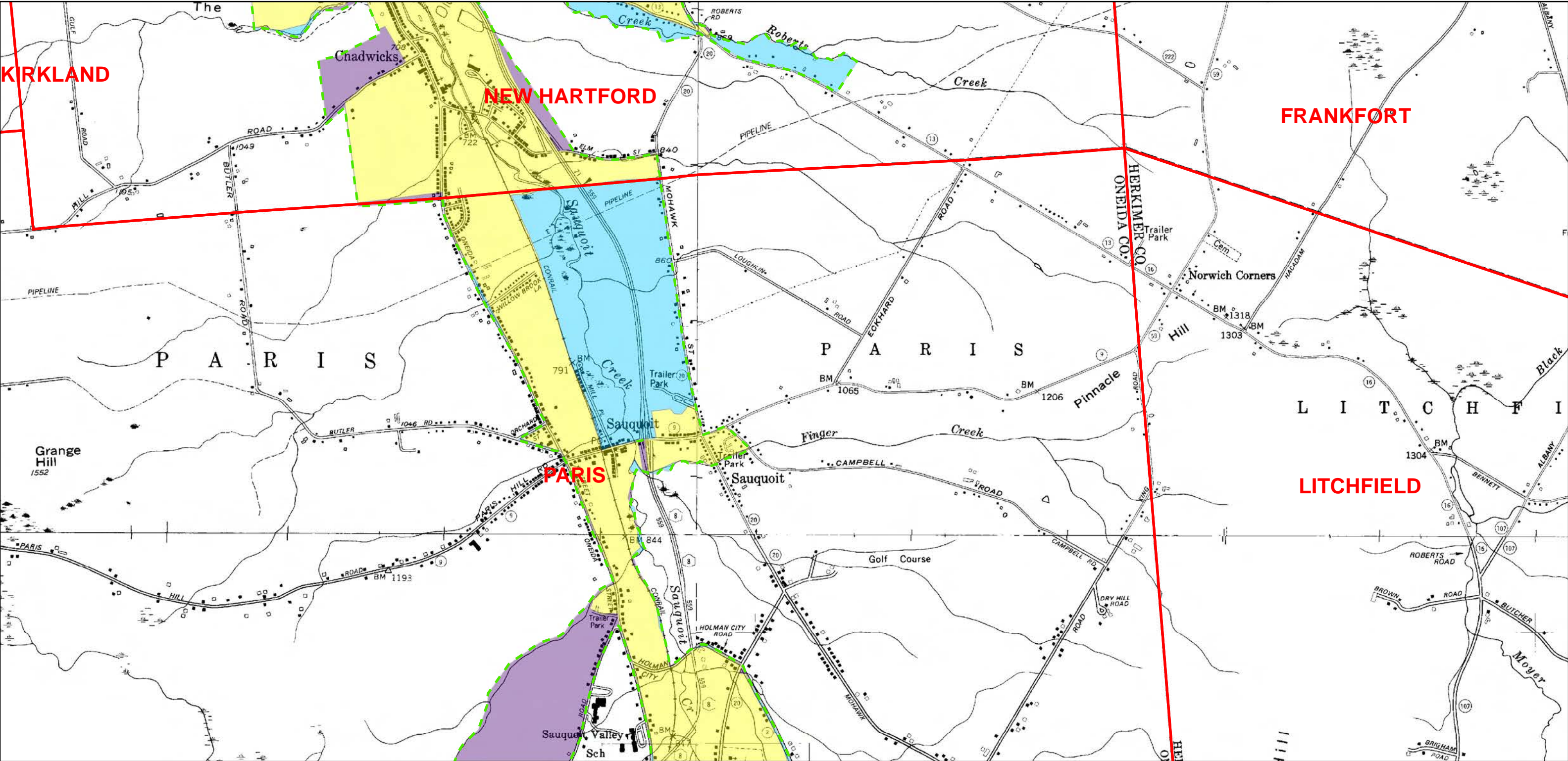


**Legend**

- Town, Village, or City Boundary for New York State
- Automatically Designated MS4 Boundary
- 2000 Census Urbanized Area (No longer UA based on 2010)
- Additionally Designated 2003
- Additionally Designated 2008
- Additionally Designated 2010
- 2010 and 2000 Census Urbanized Area Overlap
- 2010 Census Urbanized Area (Newly Designated)







**Legend**

Town, Village, or City Boundary for New York State

Automatically Designated MS4 Boundary

2000 Census Urbanized Area (No longer UA based on 2010)

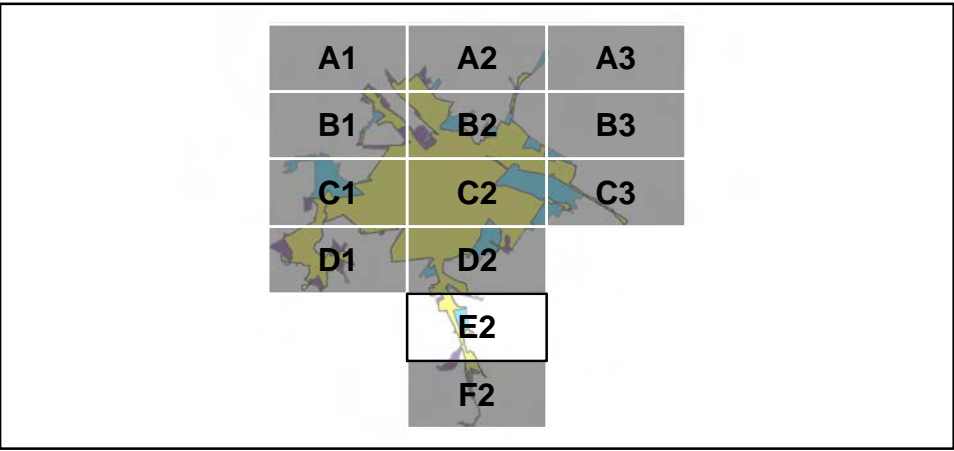
Additionally Designated 2003

Additionally Designated 2008

Additionally Designated 2010

2010 and 2000 Census Urbanized Area Overlap

2010 Census Urbanized Area (Newly Designated)



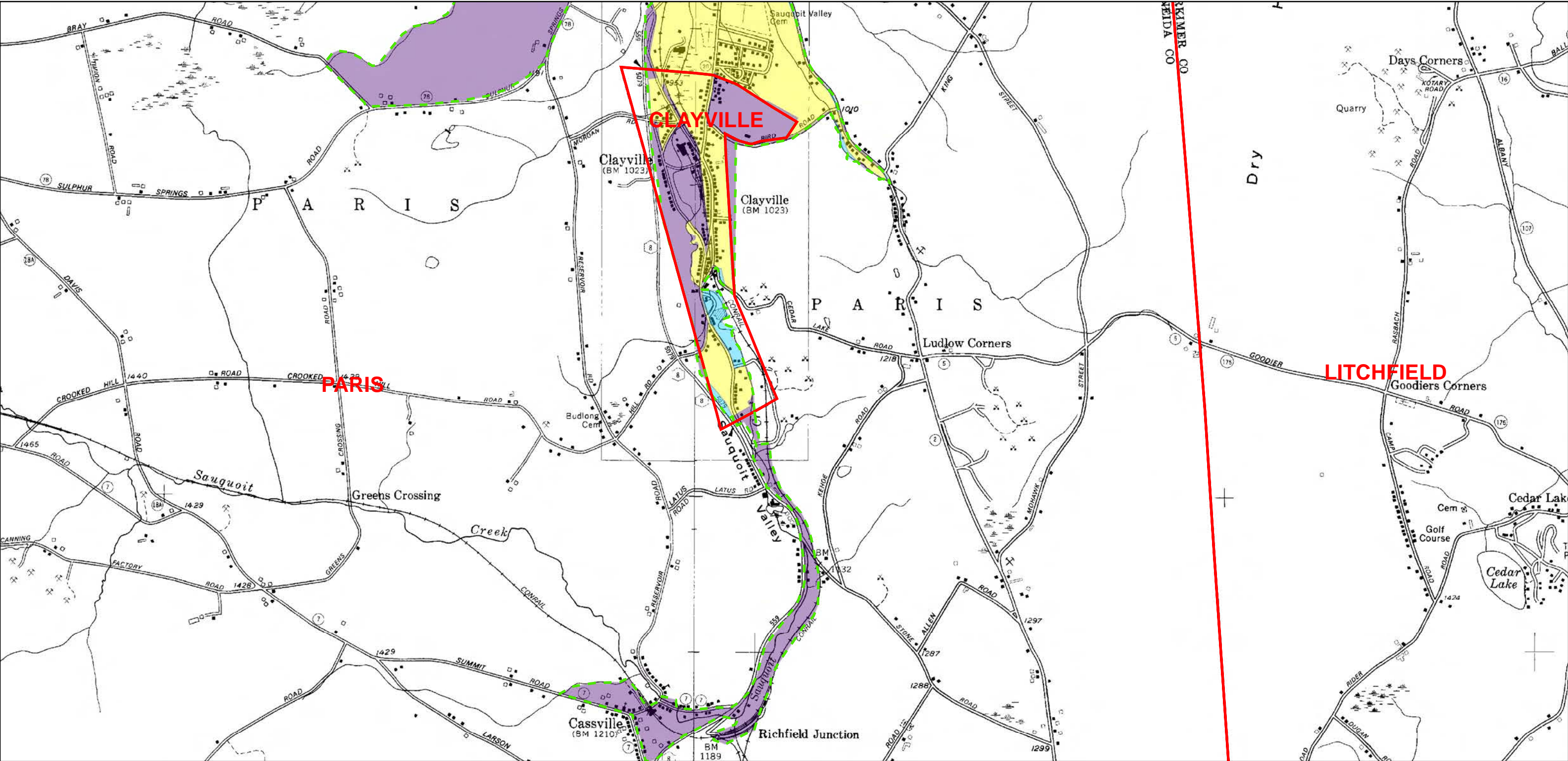
00.250.511.52Miles

N

E2

Page 12 of 13





**Legend**

- Town, Village, or City Boundary for New York State
- Automatically Designated MS4 Boundary
- 2000 Census Urbanized Area (No longer UA based on 2010)
- Additionally Designated 2003
- Additionally Designated 2008
- Additionally Designated 2010
- 2010 and 2000 Census Urbanized Area Overlap
- 2010 Census Urbanized Area (Newly Designated)

