

# HUDSON VALLEY NATURAL RESOURCE MAPPER



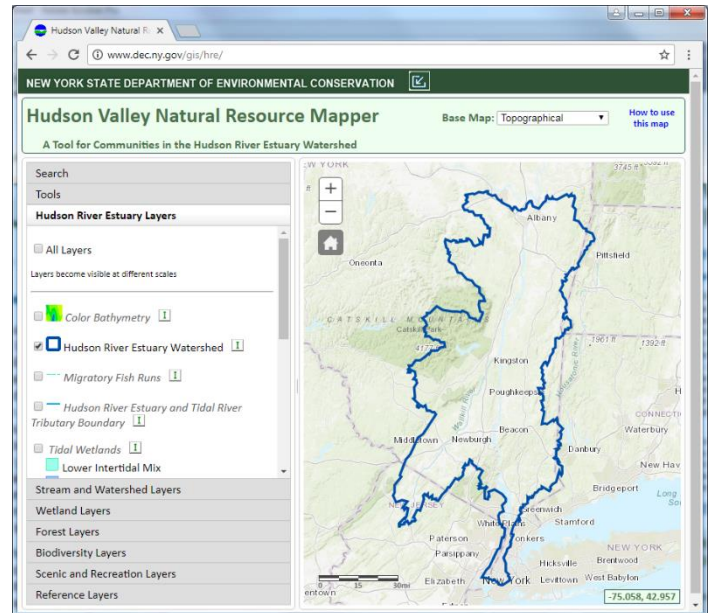
Hudson River  
Estuary Program

## A Tool for Communities in the Hudson River Estuary Watershed

The Hudson Valley Natural Resource Mapper is an online, interactive tool to assist local land-use decision-makers with identifying and understanding important habitat and water resources, the connections between them, and their broader regional context. By having information about natural features such as stream habitat, floodplains, wetlands, and large forests, communities can begin to identify conservation priorities and strategies that can be incorporated into land-use planning. Ultimately, this process will help ensure that future generations continue to enjoy the numerous benefits of the Hudson Valley's significant natural systems.

The mapper also highlights Hudson River recreation sites and other areas where residents and visitors can access and enjoy the region's natural beauty. Use the mapper to learn about places to visit and the environmental resources they support!

Link: <http://www.dec.ny.gov/lands/112137.html>



## NATURAL RESOURCE MAPPER INFORMATION LAYERS

### Estuary

- Hudson River Bathymetry
- Migratory Fish Runs
- Hudson River Estuary and Tidal River Tributary Boundary
- Submerged Aquatic Vegetation
- Tidal Wetlands
- NYS Department of State Significant Coastal Fish and Wildlife Habitats

### Streams and Watersheds

- Watershed Boundaries
- Riparian Buffer Areas
- DEC Biomonitoring Data
- Dams and Assessed Road-Stream Crossings
- DEC Priority Waterbodies
- DEC Waterbody Classifications and Trout Status
- FEMA Flood Hazard Areas

### Wetlands

- National Wetlands Inventory
- DEC Freshwater Wetlands and Check Zones
- Wetland Soils

### Forests

- Forest Condition Index
- Core Forests
- Matrix Forest Blocks and Forest Linkage Zones

### Biodiversity

- Known Important Areas for Rare Animals (Aquatic, Terrestrial, Wetland, Bat Foraging Areas, Migratory Fish), Rare Plants, and Coldwater Stream Habitat
- Significant Natural Communities
- Audubon Important Bird Areas
- Significant Biodiversity Areas in the Hudson Valley

### Scenic and Recreation

- Hudson River Fishing and/or Boat Launch Access
- NYS Parks and Historic Sites
- DEC Lands
- Scenic Areas of Statewide Significance

### Reference

- Town, City, Village, and County Boundaries
- Tax Parcels
- NY Protected Areas
- Critical Environmental Areas

## Using the Natural Resource Mapper

The mapper can help to visualize an area's resources—where they occur and how they relate to each other, their context, and existing development—and provide a foundation for land-use planning and decision-making. Use the mapper to inform:

- Public education and outreach
- Preliminary site analysis for environmental review
- Identification of conservation priorities
- Natural resources inventories
- Comprehensive planning and zoning updates
- Watershed assessment and planning
- Open space planning and land acquisition

### Important Note:

This tool is intended for general information and planning purposes and does not indicate the extent of DEC regulatory authority. It contains data compiled from numerous sources and may not be complete or accurate. Any resource shown on a map should be verified for legal purposes, including environmental review. Contact your DEC regional office for assistance with regulatory questions. Hudson River Estuary Program staff can assist with interpreting and using the data provided.

## Quick Tour of the Natural Resource Mapper

The screenshot shows the 'Hudson Valley Natural Resource Mapper' interface. At the top, it says 'NEW YORK STATE DEPARTMENT OF ENVIRONMENTAL CONSERVATION' and 'Hudson Valley Natural Resource Mapper'. Below this, it says 'A Tool for Communities in the Hudson River Estuary Watershed'. The interface includes a search bar, a tools menu, a layer list on the left, and a map area. A pop-up window titled 'Significant Coastal Fish and Wildlife Habitats (1 of 3)' is open over the map, showing details for 'Habitat: RONDOUT CREEK' and 'Region: HudsonRiver'. A scale bar is visible at the bottom of the map.

Callout boxes point to the following features:

- Exit full screen
- Base Map: Topographical
- How to use this map
- Multiple search options
- Print and measure tools
- Change base map
- Detailed instructions
- Manual zoom
- Click on map feature to open pop-up box for more information
- Toggle through information for visible layers
- Check boxes to turn individual layers on/off
- Scroll to access all available layers
- Link to additional layer information
- Click on layer groups to expand table of contents/legend. Layers visible at different scales will appear in gray italic font
- Scale bar

## CONTACT INFORMATION

### Ingrid Haeckel

Conservation and Land Use Specialist  
845-256-3829 | [ingrid.haekkel@dec.ny.gov](mailto:ingrid.haekkel@dec.ny.gov)  
[hudson.dnr.cals.cornell.edu](http://hudson.dnr.cals.cornell.edu)

### New York State Department of Environmental Conservation

21 South Putt Corners Road  
New Paltz, NY 12561  
<https://www.dec.ny.gov/lands/5094.html>