

CORNING STUDY AREA

Residential Properties Investigation & Cleanup

State Superfund Program

Corning Blvd, Corning, NY 14830

WHO TO CONTACT

Comments and questions are always welcome and should be directed as follows:

PROJECT-RELATED QUESTIONS:

Kelly C. Cloyd, Ph.D.
NYSDEC Region 8 Office
6274 East Avon-Lima Road
Avon, NY 14414
(585) 226-5351
kelly.cloyd@dec.ny.gov

SITE-RELATED HEALTH QUESTIONS:

Melissa A. Doroski
NYSDOH
Empire State Plaza
Corning Tower, Room #1787
Albany, NY 12237
(518) 402-7860
beei@health.ny.gov

FOR INFORMATION ON
THE STATE SUPERFUND
PROGRAM, SITE NO.
851046:

[https://www.dec.ny.gov/
chemical/97180.html](https://www.dec.ny.gov/chemical/97180.html)

The New York State Department of Environmental Conservation (DEC) is committed to a careful and thorough cleanup of the Corning Study Area and the surrounding impacted properties while keeping the Corning community informed of our actions. Our top priority is ensuring that community members do not come into contact with any site-related contamination. DEC and the New York State Department of Health (DOH) are coordinating closely with Corning Incorporated to facilitate completing this work expeditiously to limit impacts to the community.

Highlights of Activities Completed in 2019

Corning Incorporated with oversight by DEC and DOH, or the “Agencies,” cleaned up soil contamination at 21 properties to protect public health and the environment. Work and equipment operation typically took place five days per week (Monday through Friday), generally between 7 a.m. and 5 p.m. Areas that were disturbed during the cleanup are being restored to pre-existing conditions in consultation with each property owner.

Highlights of Activities Planned for 2020

Corning Incorporated plans to clean up soil contamination at approximately 40 properties during 2020, subject to DEC oversight and property owner approvals. Corning Incorporated will submit comprehensive design packages and a detailed schedule for DEC review prior to the beginning of the 2020 construction season. Meetings with owners of properties planned for remediation in 2020 will begin in early 2020 to ensure construction activities can commence as anticipated in April 2020. To better assist with construction management and inspection services, DEC will retain an engineering firm, Parsons.

Pre-Design Investigation (PDI) Activities

The residential portion of the Study Area site is represented by three “operable units” (OU1, OU2, and OU5) as shown on the Status Map below. Additional characterization activities are ongoing pursuant to an approved Pre-Design Investigation (PDI) Work Plan that will assist DEC in defining the extent of soil contamination present. This investigation approach may result in several rounds of samples being collected on individual properties to clearly delineate excavation limits and ensure the cleanup is successful.



When Can I Expect to See Sampling Data?

The goal is for Corning Incorporated to provide data to property owners within 30 days of data validation. Every effort is made to expedite the receipt

of data by property owners.

Cleanup and Restoration of Properties

In 2017, DEC issued a Decision Document requiring the cleanup of residential properties to include the removal of soil up to two feet below ground surface (bgs) if it exceeds residential soil cleanup objectives or contains fill containing ash, brick and/or glass. The multi-year cleanup effort began in 2018 with the remediation of three properties. Beginning in June 2019, soil removal and restoration activities resumed in areas within OU1, OU2, and OU5. As part of the remedial design process, individual property owners are contacted and provided with proposed remedial design drawings. Staff from DEC, DOH, and Corning Incorporated will meet with residents to review these plans prior to the excavation and other cleanup work. Property surveys will also be completed to document property specific inventories of trees, sheds, fencing, decking or other unique property features. Property owners are encouraged to offer input on remedial design drawings, particularly with respect to restoration of their property. Once remedial design drawings are finalized and approved by DEC and the property owner, construction activities can begin. Construction is expected to continue through November 2019 and resume in April 2020, weather permitting.



Property owners are encouraged to offer input on remedial design drawings, particularly with respect to restoration of their property. Once remedial design drawings are finalized and approved by DEC and the property owner, construction activities can begin. Construction is expected to continue through November 2019 and resume in April 2020, weather permitting.

DEC is adaptively managing this project to ensure the remediation and restoration activities are completed as efficiently as practicable. All areas that are disturbed during the removal will be restored, including lawns, sidewalks, driveways, plantings, garden beds, sheds, decks, and pools. Trucks will be covered to properly secure all excavated material during transport for disposal off-site at a permitted facility. Truck traffic patterns will be designed to minimize congestion on local roads and maintain safety in the community. DEC and DOH have approved a Community Air Monitoring Plan

(CAMP) that requires continuous air monitoring during all excavation and backfilling activities to ensure no additional contamination is released to adjacent properties or the environment during the cleanup.

Corning Incorporated will continue to conduct soil sampling within the Study Area to inform the preparation of property-specific excavation and restoration plans. DEC will continue to keep area residents informed as areas are scheduled for cleanup.

Site Background

DEC, in consultation with DOH, continues to oversee the investigation and cleanup of the Corning Study Area. The site is bounded by the Chemung River to the south, Post Creek to the east, I-86 to the north, and Pyrex Street to the west. The Study Area includes the Corning-Painted Post High School property; the Corning Christian Academy property; the City of Corning Memorial Stadium property; a residential area consisting of 326 individual properties; and flood control areas along the Chemung River and Post Creek.

The Site Characterization confirmed the disposal of significant quantities of fill containing ash, brick, and glass in various portions of the Study Area, including more than 100 residential properties. Soil and



groundwater were analyzed for volatile organic compounds (VOCs), semi-volatile organic compounds (SVOCs), metals, polychlorinated biphenyls (PCBs), and pesticides. Based on the investigation, the primary contaminants of concern are lead, arsenic, cadmium and SVOCs. To date, sampling has been conducted at 321 properties. Based on sampling results that showed no threat to public health or the environment, DEC issued "No Further Action" letters for 125 of those properties.

Groundwater samples were collected from seven groundwater monitoring wells installed on school and City property, the school's irrigation well (used to water athletic fields as needed in dry weather), and an adjacent public water supply well. Groundwater monitoring to date has not identified levels of site-related contaminants above groundwater standards. The area is served by public water and there are no private water supplies (other than the school's irrigation well).

Next Steps

DEC and DOH will continue to oversee Corning Incorporated's remedial program, including completion of the PDI and Remedial Designs for residential properties within OU1, OU2 and OU5. Corning Incorporated is working on work plan deliverables: an adequate cover system in place at the Corning Painted Post School District property; interim site management plans; and a remedial investigation work plan for Operable Unit 4 - the Flood Control Areas. Environmental easement packages for all the Operable Unit 3 properties are also being developed to require the completion and submission a periodic certification that institutional and engineering controls remain in place, allow the use and development of the controlled property for restricted residential use and require compliance with the DEC approved Site Management Plan. DEC is also working with DOH to determine the appropriate approach and

program (or programs) to investigate and clean up properties contaminated with fill containing glass, ash, and/or brick which are outside of the defined Study Area. DEC will keep the public informed throughout the additional investigation and cleanup with newsletters such as this one during the 2020 season.

WHERE TO FIND INFORMATION

Project documents are at these locations:

Southeast Steuben County Library
300 Nasser Civic Center Plaza
Suite 101 Corning, NY 14830
(607) 936-3713

Region 8 NYSDEC Headquarters
6274 East Avon Lima Road
Avon, NY 14414
(585) 226-5324
(call for an appointment)

Project documents are available on the NYSDEC website at:

www.dec.ny.gov/chemical/97180.html

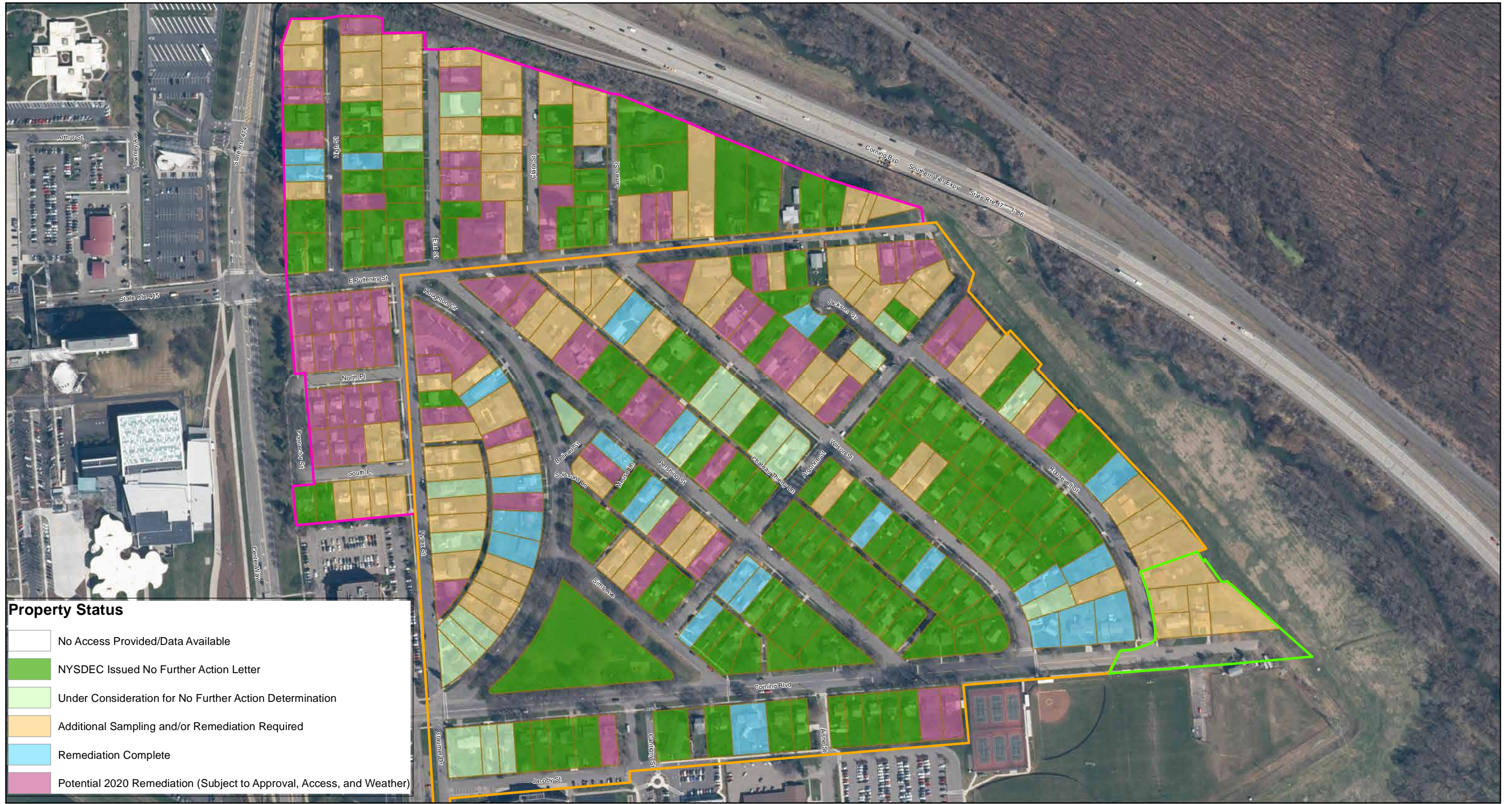
or through the DECinfo Locator at:

<https://www.dec.ny.gov/data/DecDocs/851046/>

Receive Site Fact Sheets by Email

Have site information such as this fact sheet sent right to your email inbox. DEC invites you to sign up with one or more contaminated sites email listservs at: www.dec.ny.gov/chemical/61092.html

It's quick, it's free, and it will help keep you better informed. As a listserv member, you will periodically receive site-related information and announcements for all contaminated sites in the county(ies) you select.



Property Status

- No Access Provided/Data Available
- NYSDEC Issued No Further Action Letter
- Under Consideration for No Further Action Determination
- Additional Sampling and/or Remediation Required
- Remediation Complete
- Potential 2020 Remediation (Subject to Approval, Access, and Weather)



Legend

- Study Area Parcels
- Operable Units**
- OU1
- OU2
- OU5

* = Remediation may be required in the City of Corning rights-of-way

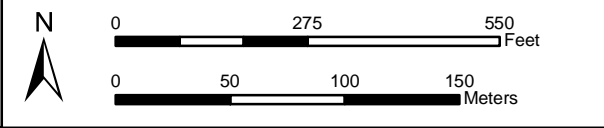
NOTE:
 THESE MAPS ARE PROVIDED FOR INFORMATIONAL PURPOSES ONLY AND DO NOT MAKE ANY REPRESENTATIONS ABOUT ANY REMEDIAL ACTIVITIES

NOTES:
 Base Imagery: Robinson Aerial Imagery, Dec 2015
 Coordinate System: NAD 1983 State Plane
 New York Central Feet
 Datum: NAD83. Units: Feet

Study Area
 Corning, NY



November 2019 Status Map



Document Name: Status_Map_NoIDs_20191111.MXD
 11/11/2019