

Environmental Cleanup at Corning, NY **Corning, Steuben County** **COMMUNITY LIAISON PLAN**

April 2023



**Department of
Environmental
Conservation**



Department of
Environmental
Conservation



This page left intentionally blank

COMMUNITY LIAISON PLAN

Environmental Cleanup at Corning, NY Corning, Steuben County

Prepared for:



Department of
Environmental
Conservation

New York State Department of Environmental Conservation
Division of Environmental Remediation
625 Broadway 12th Floor
Albany, New York 12233 – 7012



Prepared by:

301 Plainfield Road, Suite 350
Syracuse, New York 13212

April 2023



Department of
Environmental
Conservation



This page left intentionally blank

TABLE OF CONTENTS

1.0 INTRODUCTION.....	1
1.1 PURPOSE OF THE COMMUNITY LIAISON PLAN	1
1.2 OVERVIEW OF SITES IMPACTED (OR SUSPECTED TO BE IMPACTED) WITH FILL CONTAINING ASH, BRICK, OR GLASS IN CORNING, NY	1
1.3 PROJECT HISTORY	3
1.4 PROJECT STAKEHOLDERS	4
1.5 DEC’S MISSION AND REMEDIAL TEAM.....	4
1.6 OTHER REMEDIAL TEAM MEMBERS.....	6
1.7 REMEDIATION TEAM ROLES AND RESPONSIBILITIES	7
2. COMMUNITY PROFILE	8
2.1 COMMUNITY DEMOGRAPHICS.....	8
2.2 CORNING COMMUNITY.....	8
2.3 LOCAL GOVERNMENT.....	9
2.4 COUNTY GOVERNMENT.....	9
2.5 POTENTIAL ENVIRONMENTAL JUSTICE AREA	9
3. HISTORY OF COMMUNITY INVOLVEMENT FROM 2014 TO PRESENT	11
3.1 PUBLIC QUESTIONS – WHO, WHAT, WHERE, WHEN, WHY?	12
3.2 CLEANUP SCHEDULES AND TIMING OF FIELD ACTIVITIES	12
3.3 PROTECTING HEALTH	13
3.4 MINIMIZING DUST DURING FIELD WORK/CLEANUP ACTIVITIES.....	13
3.5 WORKING SAFELY AT LOCAL SCHOOLS AND NEIGHBORHOODS IN THE COMMUNITY	14
3.6 LIMITING LOCAL STREET CLOSURES, TRAFFIC, PARKING ISSUES RELATED TO CONSTRUCTION	14
3.7 ELECTED OFFICIALS.....	14
3.8 PROPERTY THAT IS BEING REMEDIATED AND RESTORED.....	15
3.9 DOCUMENTING PUBLIC INQUIRIES AND CONCERNS	16
4. KEY MESSAGES	17
5. AVAILABLE RESOURCES.....	18



This page left intentionally blank

1.0 INTRODUCTION

1.1 PURPOSE OF THE COMMUNITY LIAISON PLAN

Any environmental project that involves remediation and restoration of local properties will naturally raise questions from the community on project activities. This Community Liaison Plan serves to identify the project, project team members, community, and stakeholders. It functions as a guide to project personnel and the community on the best ways to communicate project information; answer questions; and raise issues and concerns voiced by the public to the proper sources for resolution. In short, it is a roadmap to the sources for information regarding the impacted sites and properties with ongoing remediation or investigations, as well as, those project activities that may engender public interest and inquiries.

1.2 OVERVIEW OF SITES IMPACTED (OR SUSPECTED TO BE IMPACTED) WITH ASH, BRICK, OR GLASS IN CORNING, NY

The New York State Department of Environmental Conservation and Department of Health (DEC and DOH, respectively), are committed to supervising a careful and thorough cleanup of all locations throughout Corning NY which are impacted with fill containing ash, brick, or glass, and to oversee and coordinate site characterizations and investigations of sites that potentially have similar concerns. Some of the active ongoing work and investigations are being performed by Corning Incorporated under Consent Order with DEC, while other investigations are being led by DEC independently.

Sites Where Remedial Work/Investigations Are Being Carried Out By Corning Incorporated

Residential Study Area

The Study Area Site (Study Area) is located in the City of Corning, New York. It is generally bound by the Chemung River to the south; Post Creek and Interstate 86 to the east and north; and the Guthrie Medical Center, the City of Corning Fire Department, and Centerway to the west. The Study Area is divided into five operable units (OUs) based on location and land use:

- OU-1: Residential Area including 211 residential properties and Houghton Park
- OU-2: Residential Area at the eastern end of Corning Boulevard (includes 5 residential properties)
- OU-3: School/Community Use Area includes the Corning-Painted Post School District, Corning Christian Academy and City of Corning Memorial Stadium properties
- OU-4: Flood Control Areas along Chemung River and Post Creek
- OU-5: Residential Expansion Area (includes 109 residential properties)

A decision document was issued for OU-1, OU-2, and OU-5 in 2017. Investigations completed to date on residential properties within the Study Area (OU-1, OU-2, and OU-5) demonstrate surface and subsurface soils contain arsenic, cadmium, lead and semi-volatile organic compounds (SVOCs), namely polycyclic aromatic hydrocarbons (PAHs) at concentrations above New York State Soil Cleanup Objectives. Pre-design investigations, remedial designs and remedial actions are underway for these residential properties. No impacts to groundwater have been identified to date from historic fill. A site management plan is also being developed for OU-1, OU- 2, and OU-5

Remedial action for the residential OUs includes excavation and removal of target fill to conform to Commissioner Policy CP-51 Section G and soils in the top two feet which exceed residential soil cleanup objectives (as defined by 6 NYCRR Part 375-6.8) and disposal at a facility permitted to accept the material. A cover system will be required to allow for residential use of the property. The cover will consist either of the structures such as buildings, pavement and/or sidewalks present at the property or a soil cover in areas where soils that exceed the applicable soil cleanup objectives (SCOs) or target fill will remain below two feet. During remedial actions, the contractor will use engineering controls and best management practices to ensure the public does not come into contact with any material from the site during cleanup activities. During ground intrusive work and soil loadouts, air will be monitored following a Community Air Monitoring Program (CAMP), using CAMP stations upwind and downwind from the activity, and the results will be relayed to the agencies. Following excavation, residential yards impacted by the cleanup are restored with clean backfill. Sod is placed in previously grassed areas, and trees and plantings are installed to replace those removed to the extent practical. Property features (e.g., fences and sheds) that require removal are replaced in-kind in a manner agreed upon between Corning Incorporated, DEC and the individual property owner.

In May 2018, Corning Incorporated released the DEC-approved Study Area Citizen's Participation Plan, which DEC requires to help the public locate within the Study Area stay informed. The Plan can be found at <https://www.corning.com/worldwide/en/about-us/post-creek-study-area/study-information.html>.

A decision document was issued for OU-3 in 2017. Remedial work is complete and institutional and engineering controls are being pursued for the Corning Christian Academy, Memorial Stadium and Corning Painted Post High School. All three areas require an Environmental Easement and Site Management Plan.

For OU-4, preliminary investigations have identified the presence of ash, brick and/or glass. Corning Incorporated is currently performing the site characterization investigation. Samples were collected and analyzed in 2022. The characterization report is currently being drafted.

Other Sites With Ongoing Investigation Work

Besides the Study Area, Corning Incorporated is also involved with the investigation/potential remedial work planned at other sites in the Corning, NY area (or is involved in discussions with the Department to do so). The studies will assess the nature and extent of target material (ash, brick, and/or glass) that may be encountered within the sites and evaluate potential exposure pathways by completing soil borings in areas where this material may be identified with a thorough visual inspection and reporting of the materials encountered; collecting surface and subsurface soil samples as well as surface water and sediment samples for analytical testing; and installing and sampling groundwater monitoring wells.

These sites are specifically:

- Guthrie Center Way (Site # 851051)
- Guthrie Clinic North (Site # 851062)
- Corning Mini Storage (Site # 851053)
- 3148 Van Etten Road Property (Site # 851061)
- Corning Refractories (Site # 851048)
- Steuben Glass Facility (Site # C851037B)
- Former Fulton Finishing Plant (Site # C851037)

Sites Where Investigations Are Being Carried Out By DEC

In addition to the above sites, DEC is leading and progressing investigations to determine the appropriate approach and program (or programs) to investigate and clean up other properties impacted (or suspected to be impacted) with fill containing glass, ash, and/or brick across the Corning NY area. To this effect, DEC is pursuing

investigations at the following locations.

Site Characterization activities **completed** in the Corning NY area:

- Stewart Park (Site # 851060)*
- McKinney Park (Site # 851056)
- William Street/Hillvue Park (Site # 851055)
- 3510 West Road (Site # 851052)
- South Corning Rd. (Site # 851069)
- 343 Woodview Avenue (Site # 851065)
- Centerway Pedestrian Bridge Approach (Site # 851047)
- Denison Park (Site # 851066)
- City of Corning Sewer Right of Way (Site # 851057)
- Connector Street (Site # 851064)
- Conhocton Street (Site # 851063)
- South Corning Spoils Area/Caton Road (Site # 851068)
- Gridley Disposal Area (Site # 851070)
- 29 Townsend Street (Site # 851072)

*Indicates that the site has been reclassified as an N site

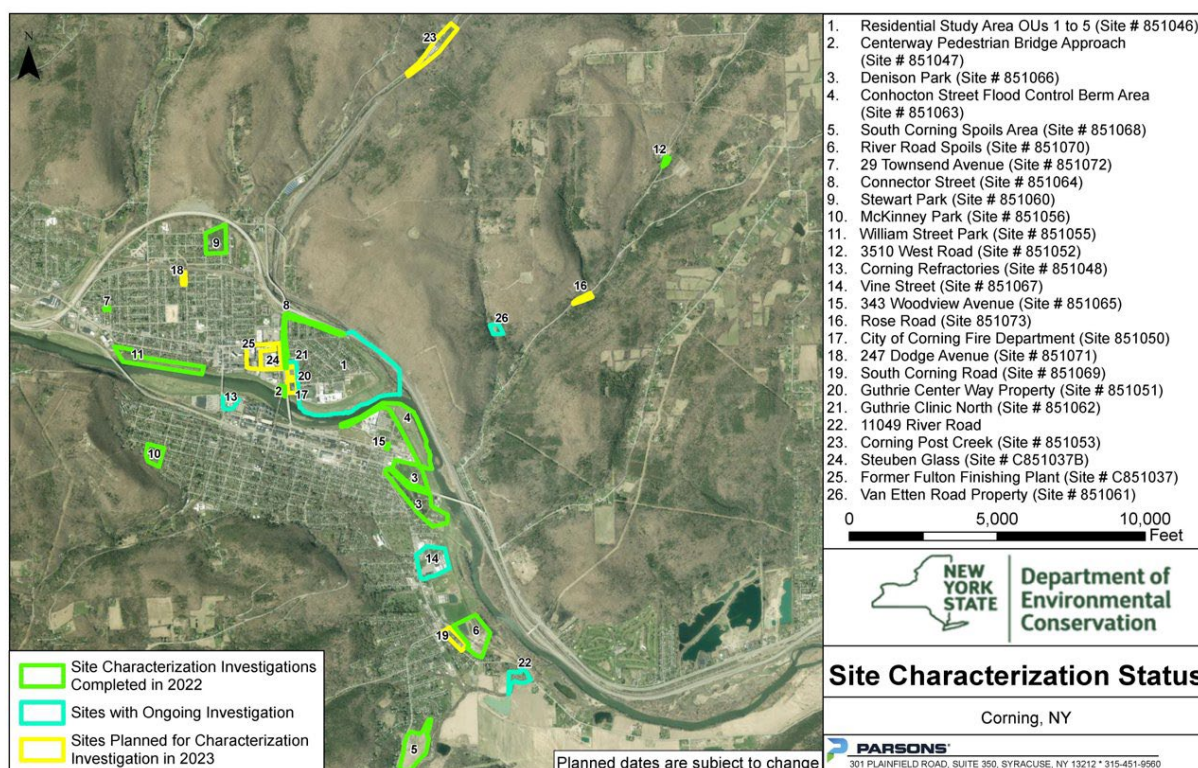
Investigations and/or other activities **ongoing** in the Corning NY area:

- Vine Street (Site # 851067)

Investigations and/or other activities **planned** in the Corning NY area:

- City of Corning Fire Department (Site # 851050)
- 247 Dodge Avenue (Site # 851071)

The following figure shows the status of Site Characterization and investigation at locations across the Corning region.



Area Wide Investigation

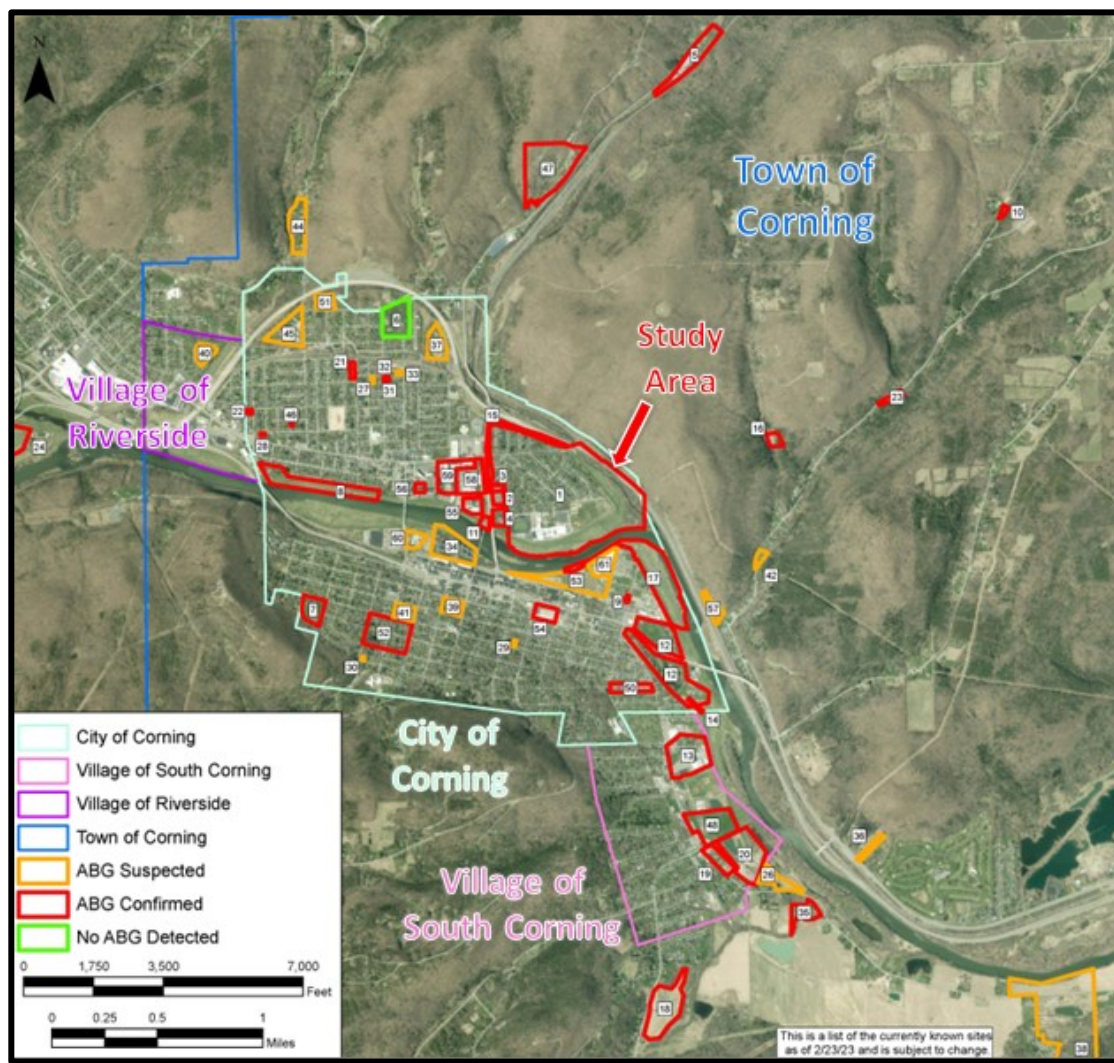
The DEC, in consultation with the DOH, is conducting an area-wide investigation to evaluate the extent of ABG and ABG-related contaminants in the soil throughout the greater area.

In 2023, the DEC will be evaluating:

- Apartments, schools, and day care facilities in the vicinity of known/suspected ABG sites,
- Residential properties with suspected ABG or near sites with confirmed ABG, and
- Background sample locations.

A draft Work Plan for the area-wide investigation is available for review at www.PublicAvailabilityCorning.com

The following figure shows the locations of all the sites identified to date to be impacted (or suspected to be impacted) with fill containing ash, brick, or glass in the Corning NY area.



1.3 PROJECT HISTORY

The City of Corning has a long history of manufacturing and is world renowned for its glassmaking, being the home to a large brick manufacturer and to more than sixty (60) former glass manufacturers. The most enduring of these enterprises is Corning Incorporated, whose history dates back to 1868 when the company founder established the Corning Flint Glass Works. While the company has grown and expanded through the years and changed names to Corning Glass Works and currently to Corning Incorporated, the corporate headquarters has remained in Corning, New York. Through a title search of property deeds, it was found that the Study Area was located on part of lands previously owned by Corning Homes, Inc., which had acquired these properties in 1920 from the heirs of the then-deceased founder of Corning Flint Glass Works. The deeds for these properties contained a condition that allowed Corning Glass Works to maintain structures, buildings and "ash dumps as now located" on the properties. Despite a thorough review of available historical documents and public records, Corning Incorporated has not, to date, located any maps or records that depict the potential location, if any, of the "ash dumps" as referenced in the deeds (i.e., as of 1920). In 1937, Corning Homes, Inc. sold portions of the properties with the same conditional language included, which has never been extinguished. Corning Homes, Inc. has no relation to Corning Incorporated or any of its predecessors.

1.4 PROJECT STAKEHOLDERS

The following list identifies the project stakeholders who may affect, be affected by or perceive themselves to be affected by decisions made as they relate to the Study Area.

- Property owners and residents of Corning NY
- City of Corning
- Town of Corning
- Village of South Corning
- Steuben County
- Corning Painted Post School District
- Corning Christian Academy
- Business owners on project sites
- Guthrie Clinic
- City of Corning Fire Department

It is not unusual for projects of this type to have several teams working together to address the various aspects of an environmental cleanup, while interacting with the above stakeholders to make sure their needs and concerns are met.

The teams involved include DEC, the lead State agency for State Superfund sites; DOH, which oversees issues of human health; and Parsons, the engineering firm consultant which supports DEC and DOH with technical reviews, outreach, construction oversight, and quality control. In addition to these, AECOM produces the environmental designs and reporting for the cleanup, performs sampling and data management, and oversees construction management as the Engineer of Record for Corning Incorporated for the Study Area, the Guthrie Medical (Main and North), the City of Corning Fire Department, Coring Mini-Storage, and the 3148 Van Etten sites. Severson Environmental Services carried out the construction activities in the Study Area for Corning Incorporated in 2019 through 2022 and will do so again in 2023.

All these team members coordinate with each other to ensure that the work is done properly and efficiently, and that the community is kept informed of project activities. All project personnel will easily be identified by photo identifications and high-visibility safety vests or clothing with their company branding (logo).

1.5 NEW YORK STATE'S MISSION AND REMEDIAL TEAM

The mission of the DEC Division of Environmental Remediation, in consultation with the New York State Department of Health, is to protect public health and the environment in the State of New York by preventing

releases to the environment through the regulation of petroleum and chemical bulk storage facilities, and responding to, investigating, and remediating releases of contaminants that have occurred.

The goal of the Inactive Hazardous Waste Disposal Site Remedial Program, also known as the State Superfund Program, is to identify and characterize suspected inactive hazardous waste disposal sites (sites) and to ensure sites, which pose a significant threat to public health or the environment, are properly addressed.

New York State is committed to supervising a careful and thorough cleanup of the Study Area and all additional impacted sites identified in the Corning NY area. DEC's foremost priority is ensuring the public (including residents, school-district staff, children, and visitors) does not come in contact with site-related constituents of concern. This cleanup is being completed to address potential exposure to heavy metals (primarily arsenic, cadmium, and lead) and PAHs.

The following are the primary DEC staff on these projects:

Samantha Salotto, P.E., Assistant Engineer (Environmental) and DEC Project Manager for the Study Area Remediation, OU4 Flood Control Area, Corning Painted-Post School Cover System Evaluation, 3510 West Road, Corning Refractories, Rose Road, Vine Street, and 3148 Van Etten Road Property. A Bachelor of Science degree in Environmental Engineering with more than 6 years of experience managing NY State Superfund sites.

Jasmine Stefansky, Assistant Geologist and DEC Project Manager for the Site Management of the Corning Study Area. A Bachelor of Science degree in Hydro and Environmental Geology from Central Michigan University with over four years of environmental consulting experience before joining the DEC.

DEC oversees the remedial work in consultation with the DOH, who provides oversight of the remedial work to ensure that remedial activities are conducted in a way that is protective of public health. The following are the primary DOH staff on this project

Johnathan Robinson is the DOH Project Manager for the City of Corning Fire Department, Guthrie Center Way Property, Corning Mini Storage, Study Area OU4 Flood Control Area, Stewart Park, William St. Park, and McKinney Park. John has a Masters in Environment and Land Use Planning, has spent eight years working in environmental remediation and investigation, and has more than 2 year with the DOH. He serves as the DOH contact for the previously mentioned sites.

1.6 OTHER REMEDIAL TEAM MEMBERS

Parsons Corporation

Parsons Corporation, one of the nation's largest environmental services firms, has been contracted by DEC to provide standby engineering services for a variety of projects throughout New York State. Parsons has a focus on environmental, infrastructure, security, and construction projects, with experience in environmental planning, compliance, quality, technology, remediation and restoration. In this role, Parsons has performed site characterizations and remedial investigations, implemented interim remedial measures (IRMs), developed remedial designs, assisted with construction oversight, and has provided third-party consulting and support.

Parsons has been retained by DEC to provide third party oversight of remedial design and remedial action efforts in the Study Area, and to support ongoing investigations at other sites throughout the City of Corning. Specifically, Parsons is responsible for reviewing Corning Incorporated document deliverables; providing field oversight on behalf of DEC during remedial investigation and construction activities; conducting project data reviews; quality assurance/quality control activities; site characterization and investigation activities support and reporting; and public outreach participation. Parsons is providing staff and resources from its Syracuse office, which includes an array of environmental professionals. The following are the primary Parsons lead staff on this project:



- Thomas Drachenberg: Program Manager for the Parsons DEC portfolio, with 20 years of experience in the characterization and remediation of contaminated sites.
- Matthew Vetter: Project Manager for the Study Area for DEC, with over 15 years of experience overseeing environmental remediation projects.

Corning Incorporated and Associated Contractors

Gregory Haack is the primary Corning Incorporated staff member on this project. Past contractors performing the in-field remediation and construction for Corning Incorporated can be reached regarding Study Area issues by contacting the following e-mail or toll-free number: studyarea@corning.com or 866-256-1902.

Sevenson Environmental Services Inc. performed the in-field construction activities 2019-2022 and will do so again in 2023. AECOM serves as Corning Incorporated's Engineer of Record and provides engineering services, develops remedial designs, and provides construction oversight. Other contractors for Corning Incorporated have been Weston Solutions Inc. and AECOM, who have provided engineering services, developed remedial designs, assisted with construction oversight, performed remedial investigation, etc.

1.7 REMEDIATION TEAM ROLES AND RESPONSIBILITIES

Team Member	Role	Contact Information
DEC	DEC is the lead regulatory agency for the cleanup and is responsible for ensuring that the cleanup is conducted according to New York State Environmental Conservation Law. A DEC Construction Manager will be on site for the duration of the cleanup activities	<p>Samantha Salotto, P.E. Project Manager for Study Area, OU4 Flood Control Area, CPP Cover System Evaluation, Corning Refractories, Rose Road, Vine Street, 3148 Van Etten Road Property, and 3510 West Road (518) 402-9903; Samantha.Salotto@dec.ny.gov</p> <p>Jasmine Stefansky Project Manager for Site Management (518) 402-9575; Jasmine.Stefansky@dec.ny.gov</p>
DOH	DOH is responsible for identifying potential impacts to public health from the cleanup	<p>Johnathan Robinson Project Manager for Study Area, Corning Fire Department, Guthrie Center Way Property, Guthrie Clinic (North), Corning Ministorage, Study Area OU4 Flood Control Area, Stewart Park, William St. Park, and McKinney Park (518) 402-7860; Johnathan.Robinson@health.ny.gov</p>
Parsons	Parsons is a consultant to DEC retained to assist DEC review Corning Incorporated document deliverables and provide third party oversight during remedial investigations and construction.	<p>Tom Drachenberg Program Manager (315) 552-9688; Thomas.Drachenberg@parsons.com</p> <p>Matthew Vetter Project Manager (315) 552-9742; Matthew.Vetter@parsons.com</p>

2. COMMUNITY PROFILE

Town of Corning

The first settlement in Corning was established in 1796, and the Town of Corning was established in 1852 as a farming community. The Town of Corning (Steuben County, New York) is a town which is 37.3 square miles in size and is bordered on the East by the Town of Big Flats, on the North by the Town of Hornby, on the South by The Town of Caton and West by the Town of Erwin. The Chemung River runs through the town east to west, cutting through the City of Corning. The Town of Corning surrounds the City of Corning and the Village of South Corning.

City of Corning

The City of Corning is a city in Steuben County, New York, was created in 1890. Corning was named after Erastus Corning, a railroad executive and financier. The city is 3.26 square miles in size and is located within the Town of Corning, along the Chemung River. With the Chemung River running through the city, the City of Corning's first industry was lumber. Logs were transported by barge up and down the river. In the 1880s Corning became a railroad town. The City of Corning, NY is best known for its glass industry, and became known as the Crystal City as a result of the booming glass industry. The city is the headquarters for Corning Incorporated, formerly Corning Glass Works.

Village of South Corning

The Village of South Corning is a village in Steuben County, New York. The village is 0.6 square miles in size and is bordered on the north by the City of Corning, and bordered on the East, South, and West by the Town of Corning.

2.1 COMMUNITY DEMOGRAPHICS

According to the 2020 census there were 5,983 people in 2,574 households living in the Town of Corning. Just under 80 percent of the total population were adults and 18 percent were seniors. The overall median age was 44.4 years. Racial make-up was 94.2% White; 3.9% Black or African American, 1.1% two or more races present, 0.5% Hispanic or Latino, and 0.5% other. The median household income was \$66,656.

According to the same census, there were 10,551 people in 5,026 households living in the City of Corning. 79.8 percent of the total population were adults and 15.8 percent were seniors. The overall median age was 37.7 years. Racial make-up was 93.2% White; 2.7% Black or African American, 1.7% Asian, and 1.5% two or more races present. The median household income was \$49,539.

Finally, the census shows that there were 1,108 people living in the Village of South Corning. Just over 80 percent of the total population were adults and 23 percent were seniors. The overall median age was 44.8 years. Racial make-up was 88.7% White; 5.78% two or more races present, 2.89% Black or African American, 1.71 Asian, and 0.9% other. The median household income was \$55,061.

2.2 CORNING COMMUNITY

The Town of Corning, NY is a mix of forested land, farms, and residential properties. The City of Corning, NY is a mix of residential properties and commercial properties. The Village of South Corning, NY is a mix of residential properties and commercial properties.

The Town of Corning, the City of Corning, and the Village of South Corning are part of the Corning-Painted Post Area School District, which includes Corning-Painted Post High School, Corning-Painted Post Middle School, and several elementary schools. Another educational institution is the Corning Christian Academy, located adjacent to the Corning-Painted Post High School. The City of Corning Memorial Stadium is a stadium formerly used for baseball until 1969. It is currently leased by the Corning Painted Post School District for high school football, lacrosse and soccer games. The Corning Museum of Glass is located on the west side of the Study Area and is a not-for-profit museum dedicated to the history and production of glass, receiving just under half a million visitors annually.

2.3 LOCAL GOVERNMENT

The Town of Corning is governed by the Town Council, which is made up of the Town Supervisor and four elected councilmen. The Town Council's regular meetings are scheduled for the third Tuesday of each month at 7:00 p.m.

The City of Corning is governed by the City Council, which is made up of the Mayor and eight elected councilmen. The City's Charter identifies the Council's roles and responsibilities. These include setting policy as a body, appointing a City Manager, and adopting the City's annual budget. Each councilman is elected to a four-year term. The City Council's regular meetings are scheduled for the first Monday of each month at 6:30 p.m. (if the meeting falls on a holiday, the Council will meet the following day). Times and locations of the Council's meetings are provided to the Corning Leader at least 72 hours in advance and are posted on the City's website.

The Village of South Corning is governed by the Village Board, which is made up of the Mayor and four trustees. The Village Board's regular meetings are scheduled for the second Monday of each month at 6:30 p.m.

2.4 COUNTY GOVERNMENT

The Town of Corning, the City of Corning, and the Village of South Corning are located in Steuben County where the County Government is headed by the County Administration Committee, who oversees a variety of County Departments, including the Steuben County Department of Public Health.

2.5 POTENTIAL ENVIRONMENTAL JUSTICE AREA

Environmental Justice is the fair and meaningful treatment of all people, regardless of race, income, national origin or color, with respect to the development, implementation, and enforcement of environmental laws, regulations and policies. Potential EJ Areas are U.S. Census block groups of 250 to 500 households each that, in the Census, had populations that met or exceeded at least one of the following statistical thresholds:

1. At least 52.42% of the population in an urban area reported themselves to be members of minority groups; or
2. At least 26.28% of the population in a rural area reported themselves to be members of minority groups; or
3. At least 22.82% of the population in an urban or rural area had household incomes below the federal poverty level.

The federal poverty level and urban/rural designations for the above census block groups are established by the U.S. Census Bureau. The thresholds are determined by a statistical analysis of the 2014-2018 American Community Survey (ACS) data, which is the most recent data available as of the time of the analysis in 2020.



Environmental Justice allows for disproportionately impacted residents to access the tools to address environmental concerns across all of DEC's operations. The DEC Office of Environmental Justice (OEJ) works to address environmental issues and concerns that affect primarily low income and minority communities through grant opportunities, enforcement of environmental laws and regulations, consultation, guidance, and enhance public participation.

The Potential Environmental Justice Areas present in the Corning NY Area are shown in the Figure in Section 1.2.

3. HISTORY OF COMMUNITY INVOLVEMENT FROM 2014 TO PRESENT

DEC, DOH, and Corning Incorporated have been working with the City, residents, businesses, and schools to keep the community informed, and respond to concerns and suggestions to mitigate disruption and inconvenience to the neighborhood and property owners wherever possible.

The following timeline reflects the fact sheets, meetings, and communications released by DEC to the community:

2014:

- DEC Prepared Fact Sheet (June 2014).
- DEC/DOH Joint Questions and Answers Fact Sheet (June 2014).
- DEC and DOH held a Public Information Meeting in July 2014, to present the Study Area Characterization Plan, answer questions and receive public input on the plan.
- DEC and DOH held a Public Information Meeting in October 2014, to present about additional Site Characterization Plans, exposure evaluations, provide a project summary, and to answer questions and receive public input.
- DEC Prepared Fact Sheet (October 2014).

2015:

- DEC and DOH held a Public Information Meeting in March 2015, to present a project update on the Study Area, information on characterization in the expansion area, exposure evaluations, and to answer questions and receive public input.
- DEC/DOH Joint Questions and Answers Fact Sheet (March 2015).
- DEC Prepared Fact Sheet (July 2015).

2016:

- DEC and DOH held a Public Information Meeting in May 2016, to present a project update and findings for the Study Area, expansion area findings, exposure evaluations, potential remedial measures and next steps, and to answer questions and receive public input.
- DEC Prepared Fact Sheet and DEC/DOH Joint Questions and Answers Fact Sheets (May 2016).

2017:

- DEC Fact Sheet on Proposed Decision Documents OU1, OU2, OU3, and OU5 (March 2017).
- DEC and the Department of Health (DOH) held an Availability Session and a Public Meeting in March 2017, to present the proposed cleanup plans, answer questions and receive public input on the plans. During this meeting, DEC informed the public that additional sampling would be required in 2017 to complete the investigation in portions of the Study Area.
- DEC Fact Sheet on Final Decision Documents OU1, OU2, OU3, and OU5 (July 2017).

2018:

- DEC Fact Sheet - Spring 2018 Community Update (March 2018).

2019:

- DEC Fact Sheet - Spring 2019 Community Update (April 2019).
- DEC and the DOH held an Availability Session in May 2019, to update the community on upcoming work in the Study Area and next steps for the project for that year.
- DEC Fact Sheet - Fall 2019 Community Update (November 2019).

2020:

- DEC Fact Sheet - March 2020 Community Update.
- DEC Fact Sheet - May 2020 Community Update.
- DEC and the DOH held an Availability Session in November 2020, to update the community on accomplishments and results in the Study Area in 2020 and next steps for the project for 2021.
- DEC Fact Sheet - November 2020 Community Update.

2021:

- DEC Fact Sheet - July 2021 Community Update.

2022:

- DEC Fact Sheet – February 2022 Community Update.

2023:

- DEC Newsletter for Study Area – April 2023 Community Update.
- DEC Newsletter for Corning Area – April 2023 Community Update
- DEC Public Availability Session – May 10th

All project fact sheets, meeting presentations, and other informational materials are available to the public at the following website: www.dec.ny.gov/chemical/97180.html

In addition to DEC/DOH communications, Corning Incorporated released in May 2018 a DEC-approved Citizen Participation Plan, as required by DEC, to help the public stay informed.

3.1 PUBLIC QUESTIONS – WHO, WHAT, WHERE, WHEN, WHY?

Public questions are natural during the implementation of environmental clean-up activities in their community. Commonly posed questions are: Who is responsible for what; where will activities take place; when will they happen and why; how do they affect me? While DEC cannot answer every question that may arise in this publication, frequent inquiries and their responses have been included throughout this section.

For more information see the DEC's Corning Cleanup website here: <https://www.dec.ny.gov/chemical/97180.html>

3.2 SCHEDULES AND TIMING OF FIELD ACTIVITIES

Remediation activities throughout the Study Area are planned through 2023 (planned start in the Spring of 2023). At the residential properties where contamination was found, additional characterization activities to assist DEC in defining the extent of soil contamination present have been largely completed. Regarding schedules for remedial work on individual properties, Corning Incorporated and representatives of DEC will meet with owners to approve remedial design drawings prior to the start of remedial construction activities on the property. Corning Incorporated maintains a general project schedule but the sequence and timing of activities at previously remediated properties, in addition to other variables such as weather and subcontractor scheduling, can affect the start date at subsequent properties. Corning Incorporated will schedule a meeting with each property owner to agree on plans for replacing plants and trees, as well as restoring any plant bed edging and flagstone or brick patios or walkways. Any trees or large vegetation that require removal typically will be removed first, followed by the start of excavation. Corning Incorporated has published a Tree Preservation Plan approved by DEC for the Study Area that property owners are encouraged to reference. The plan describes the general approach for the protection, removal, and/or replacement of trees located within or near remediation boundaries.

Beyond the Study Area, an array of other investigations and activities are anticipated in 2023 at a variety of sites in the Corning NY area.

For more information contact: Samantha Salotto, DEC Project Manager at (518) 402-9903 or email at Samantha.Salotto@dec.ny.gov.

3.3 PROTECTING HEALTH

From the inception of this project, DEC has been working closely with DOH to ensure that public health considerations are a priority in every aspect of the cleanup.

Groundwater at the site is not used as a public water supply. Drinking water provided to the residents of Corning, NY is supplied by the City of Corning Water Department. The City of Corning Water Department complies with strictly enforced standards established by the United States Environmental Protection Agency (USEPA) and DOH.

The investigation and remediation is being completed to address potential exposure to constituents above the NYS residential SCOs (primarily arsenic, cadmium, lead and PAHs). People may have incidental contact with constituents present in soils through home maintenance and recreational activities. Maintenance of a grass or mulch cover will help prevent direct contact with the soil. Unnecessary digging in the dirt should be avoided, and children and adults should wash hands after outdoor activities. The use of doormats and periodic damp mopping of floors can help reduce exposure to outdoor soil that might be tracked indoors. All soils contain naturally occurring metals and microorganisms, and therefore it is always recommended to minimize getting soil onto the body whether it is contaminated or not.

The public may contact DOH for information, questions and/or concerns about human health in relation to the investigation and remediation of any of the sites under the program in the Corning NY area. In addition, DEC and DOH are also working with the Steuben County Department of Health to ensure that all the agencies involved are informed and able to provide timely responses to community concerns about health issues.

For more information on human health issues contact, Johnathan Robinson, Project Manager, DOH at 518-402-7881 or email at Johnathan.Robinsoni@health.ny.gov.

3.4 MINIMIZING DUST DURING FIELD WORK/CLEANUP ACTIVITIES

Corning Incorporated is implementing a DEC-approved Community Air Monitoring Plan (CAMP) to measure airborne particulate matter wherever soils may be disturbed during construction and excavation. Data from the CAMP is posted at the following website (starting at the beginning of construction and PDI investigation activities): www.dec.ny.gov/chemical/97180.html. A set of upwind and downwind air monitoring stations are required during all excavation and backfilling activities to ensure no dust is released to adjacent properties or the environment during cleanup. These stations will monitor for dust particulates using real-time monitoring equipment. Results will be compared to the airborne particulate action level. The equipment has an audible alarm that sounds if there is an exceedance of the action level. In addition, there is a requirement for no visible dust during all work activities (i.e., no visible dust emissions will be allowed outside the work zone). Monitors are set close to the work zone to ensure that should any dust be generated, it will be recorded by the monitors right away, and corrective measures (such as wetting down the area) can be taken immediately, well before the dust has a chance to reach down-gradient receptors.

Covering of exposed soil piles (e.g., excavated soils or materials staged for backfill) and truck loads with tarps will also be conducted to mitigate dust potential. The public should note that onsite workers will have protective clothing and equipment on and that pedestrian corridors will be separated from these work areas by a chain link fence/gate system.

For more information contact: Samantha Salotto, DEC Project Manager at (518) 402-9903 or email at Samantha.Salotto@dec.ny.gov.



For more information about the CAMP program, contact: Johnathan Robinson, DOH Project Manager, at 518-402-7881 or email at Johnathan.Robinson@health.ny.gov.

3.5 WORKING SAFELY AT LOCAL SCHOOLS AND NEIGHBORHOODS IN THE COMMUNITY

DEC has been working closely with the Corning Painted Post School District and Corning Christian Academy to keep them informed of project plans, and to minimize impacts to students and staff. DEC has held numerous meetings with the school district and stays in regular contact, so all concerns raised are dealt with quickly and diligently. The safety of students and school staff is tantamount to all involved with the project, and all will be working to ensure that there are not threats to either safety or health.

Work hours are expected to be from 7:00 a.m. through 5:00 p.m. The total number of personnel onsite will vary based on the work being performed and may include representatives from DEC, DOH, Parsons, Corning Incorporated, subcontractors, and vendors. The number of onsite workers is expected to generally range from approximately 5 to 25 individuals. All project personnel will be easily identified by photo identifications and high-visibility safety vests and/or coats. Traffic controls including flagmen and traffic control devices such as cones, signs, and barriers are used as needed to ensure safe access for students, school personnel, and residents to and from the project site. DEC continues to coordinate the work with individual property owners affected by the remediation.

If you would like more specific information such as construction and field work schedules, or site safety details, please contact: Samantha Salotto, DEC Project Manager at (518) 402-9903 or email at Samantha.Salotto@dec.ny.gov.

3.6 LIMITING LOCAL STREET CLOSURES, TRAFFIC, PARKING ISSUES RELATED TO CONSTRUCTION

To ensure public safety during construction and landscaping activities, DEC, Corning Incorporated and its contractors will continue to keep property owners, residents, local businesses, and schools informed throughout the life of project and construction activities. Corning Incorporated prepared a DEC-approved Public Infrastructure Protection and Restoration Plan, which was also reviewed by the City of Corning, to detail measures for mitigating or repairing any damage that may be caused to local infrastructure within the Study Area from remedial actions. Any changes to traffic routes, street closures, or impacts to parking and school routes will be communicated as soon as their details are available. Truck routes will be clearly marked and areas in which heavy equipment is being used will be posted with signage and the presence of flagpersonnel.

For more information contact: Samantha Salotto, DEC Project Manager at (518) 402-9903 or email at Samantha.Salotto@dec.ny.gov.

3.7 ELECTED OFFICIALS

Elected officials are also concerned about issues that may impact their constituents and the community they live in.

- | | |
|----------------------|----------------|
| ■ Charles Schumer | US Senator |
| ■ Kirsten Gillibrand | US Senator |
| ■ Tom Reed | US Congressman |
| ■ Thomas O'Mara | State Senator |



- | | |
|----------------------|---|
| ▪ Phil Palmesano | State Assemblyman |
| ▪ Kimberly Feehan | Corning Town Supervisor |
| ▪ Steven Maio | Steuben County Legislator for City of Corning |
| ▪ Hilda T. Lando | Steuben County Legislator for City of Corning |
| ▪ William Boland Jr. | City of Corning Mayor |
| ▪ Jim Thomas | Village of South Corning Mayor |

Inquiries by elected officials are handled by DEC Legislative and intergovernmental staff and can be directed Samantha Salotto, DEC Project Manager at (518) 402-9903 or email at Samantha.Salotto@dec.ny.gov, who will raise the question to Legislative Affairs for response.

3.8 PROPERTY IN STUDY AREA THAT IS BEING REMEDIATED AND RESTORED

Given remediation and restoration work is taking place on private properties in the Study Area, Corning Incorporated and the agencies are in close contact with property owners to discuss the plans for excavation and site restoration. After DEC and DOH have reviewed the soil sampling results, a preliminary excavation drawing will be developed by Corning Incorporated using the survey that was performed at each property. The DEC-approved drawing is presented to the property owner along with the analytical results of the soil samples collected at the property. It shows the minimum depth of soil that must be removed from different areas of the property, and it depicts those property features that will be affected by the remediation. Corning Incorporated and DEC will then discuss with the property owner any questions or concerns the owner may have and discuss how the impacted property features will be restored.

Prior to remedial work, Corning Incorporated and/or its landscape contractor will visit the individual properties to prepare an inventory that lists the types and numbers of all plants and trees. During the meeting to review the design drawing, this information will be reviewed in detail, along with the proposed restoration of any plant bed edging and flagstone, or brick patios, walkways, and so on. It is not always possible to correctly identify all seasonal species, so property owners should review the inventory closely and inform Corning Incorporated and DEC of any changes to the inventory. Shrubs, perennials, and edible plants will be replaced with the same or similar varieties unless otherwise agreed. Seasonal bulbs and annual plants present at the time of the inventory or prior to excavation will not be replaced. The landscaper will typically provide standard nursery stock plants that are readily available locally. Excavated soils will be replaced with clean soil, and previously grassed areas will be replaced with sod (which produces a useable lawn faster than seeding).

Details regarding tree management and restoration during the remedial work at residential properties is detailed in the DEC-approved Tree Preservation Plan for the Study Area, prepared by Corning Incorporated.

Questions about property values and taxes

Impacts to property values and taxes are often a concern for property owners near a cleanup site. Corning Incorporated and construction teams will be working closely with property owners to make certain that properties are protected from damage during construction activities. The state agencies overseeing the cleanup have no authority or control over property values or property taxes, however site cleanup and restoration may actually increase property values. Following completion of the remediation project, DEC will provide documentation of the cleanup done on each property. Specific questions about possible impacts on local taxes are a local issue and should be deferred to the City of Corning Finance Department (<https://www.cityofcorning.com/finance>).



Value Assurance Program Update

In May 2016, Corning Incorporated worked with an outside team of real estate experts to develop a Value Assurance Program (VAP) to protect the value of residential properties located in the Study Area. Based on the anticipated remediation schedule for residential properties located in the Study Area, Corning Incorporated extended the original VAP program until May 5, 2026. The VAP booklet is available at (www.corningnyvap.com).

Laws governing environmental actions such as sampling and remediation

The laws and regulations that have jurisdiction over these issues are within the scope of DEC's Counsel. Initially, those inquiries may be made to Samantha Salotto, DEC Project Manager at (518) 402-9903 or email at Samantha.Salotto@dec.ny.gov, who will raise the question to State Counsel for response.

3.9 DOCUMENTING PUBLIC INQUIRIES AND CONCERNS

Given the project involves a variety of stakeholders, it is important that a process be in place that provides plans for each property and information to the public, but also allows them to log-in their inquiries and comments. This process will allow DEC to track inquiries, resolutions to those inquiries, as well as those issues that remain outstanding. In order to accomplish this task, DEC will provide an email address to the public where these issues may be raised. Questions and comments may be sent to the Remediation Team Contacts (see Section 1.7), depending on the inquiry in question.

Corning Incorporated also has available a toll free telephone number to receive and respond to questions from the public (866-256-1902), and has an e-mail address available for community members to ask a question in writing (StudyArea@Corning.com).

Additionally, to provide information or feedback regarding the Study Area or any of the additional investigation areas, if you find ash/brick/glass on your property, if you have any questions after remedial activities have taken place on your property, if you would like to request an in-person meeting, or if you have any other comments regarding the remedy and investigation areas, the DEC and DOH teams can be contacted by either:

- Emailing the team at PublicAvailability.Corning@Parsons.com; or
- Calling the Public Availability Hotline at the toll-free number 833-770-1716

4. KEY MESSAGES

As the remedial and investigation work proceeds at the various sites present in the Corning NY area, it is important that the community engage with DEC in a dialogue that is open and enhances two-way understanding of both the community needs and concerns, and the requirements of the work to be conducted. Remediation work is by its nature, impactful, whether on private property, school property or on public streets. While Corning Incorporated, and its team will do all they can (under DEC oversight) at the sites they are involved in to mitigate any impacts such as noise, use of heavy equipment, changes to traffic patterns, impacts to the school, students and staff, and remediation work in yards and in proximity to homes, the public may still have questions and concerns. Investigation work ongoing at multiple sites can also drive questions from the public, and both DEC and DOH are invested in resolving these inquiries as they arise.

Therefore, it is important that, in addition to the commitment of public sensitivity by DEC staff and involved parties, the community keep in mind the following:

- Given much of the work and staging of construction and excavation is taking place on residential properties and near local schools (Corning-Painted Post High School and the Corning Christian Academy), there may be community concern about the safety of residents, including property owners and their families, students, staff, and other children who live and play in and around the construction zone. DEC will continue to work with the residents, property owners, and school districts, to ensure that any concerns are heard, acted on, and met. Public health and safety are primary goals of DEC and DOH.
- The community has an open line to DEC, its staff and contractual teams, who are able and willing to work with them throughout the life of the project.
- DOH recommends best practices that can be followed to reduce the potential for exposure anytime people are concerned that soil may contain man-made or naturally occurring contaminants.
- Links to web resources on exposure, lead, safety when gardening:
 - <http://www.health.ny.gov/environmental/about/exposure>
 - <http://www.health.ny.gov/environmental/lead/>
 - <http://www.health.ny.gov/publications/1301.pdf>
- There will be no cost to individual property owners for any investigation or remediation activities that may be undertaken at their property. However, the property owner will be requested to consent to access.

5. AVAILABLE RESOURCES

Where can I find more information?

DEC and DOH staff are always available to provide updates or answer any questions community members or faculty have. Information on how to contact them is provided in Section 1.7 of this document, and the DEC maintains a web page with additional information:

<https://www.dec.ny.gov/chemical/97180.html>

Complete copies of the documents listed on the web page and other documents, are available in hard copy for public review at the following locations:

Southeast Steuben County Library

300 Nasser Civic Center Plaza, Suite 101; Corning, NY 14830; 607-936-3713

DEC, Region 8 Office Headquarters

6274 East Avon-Lima Rd.; Avon, NY 14414; For appointments, 585-226-5324

How do I stay informed?

DEC and DOH will continue to keep the public informed as this work progresses and as development of cleanup plans are finalized. Sign up for the contaminated sites county email listserv to receive site-related information and announcements for all contaminated sites in the county (including site fact sheets and newsletters) at the following web page: <http://www.dec.ny.gov/chemical/61092.html>

Corning Incorporated has also set up a webpage to keep the public informed:

<https://www.corning.com/worldwide/en/about-us/post-creek-study-area.html>

Online Information

<https://www.dec.ny.gov/cfm/external/derexternal/haz/details.cfm?ProgNo=851046> - Information on the state superfund program, Site no. 851046

<http://www.dec.ny.gov/chemical/97180.html> - Project Website, Project Documents, & Latest News

<https://www.dec.ny.gov/pubs/109457.html> - Interactive map that displays DEC documents and public data about the environmental quality of specific sites in New York State

How do I contact the DEC/DOH teams?

→ Emailing the team at Publicavailability.Corning@Parsons.com; or

→ Calling the Public Availability Hotline at the toll-free number 833-770-1716