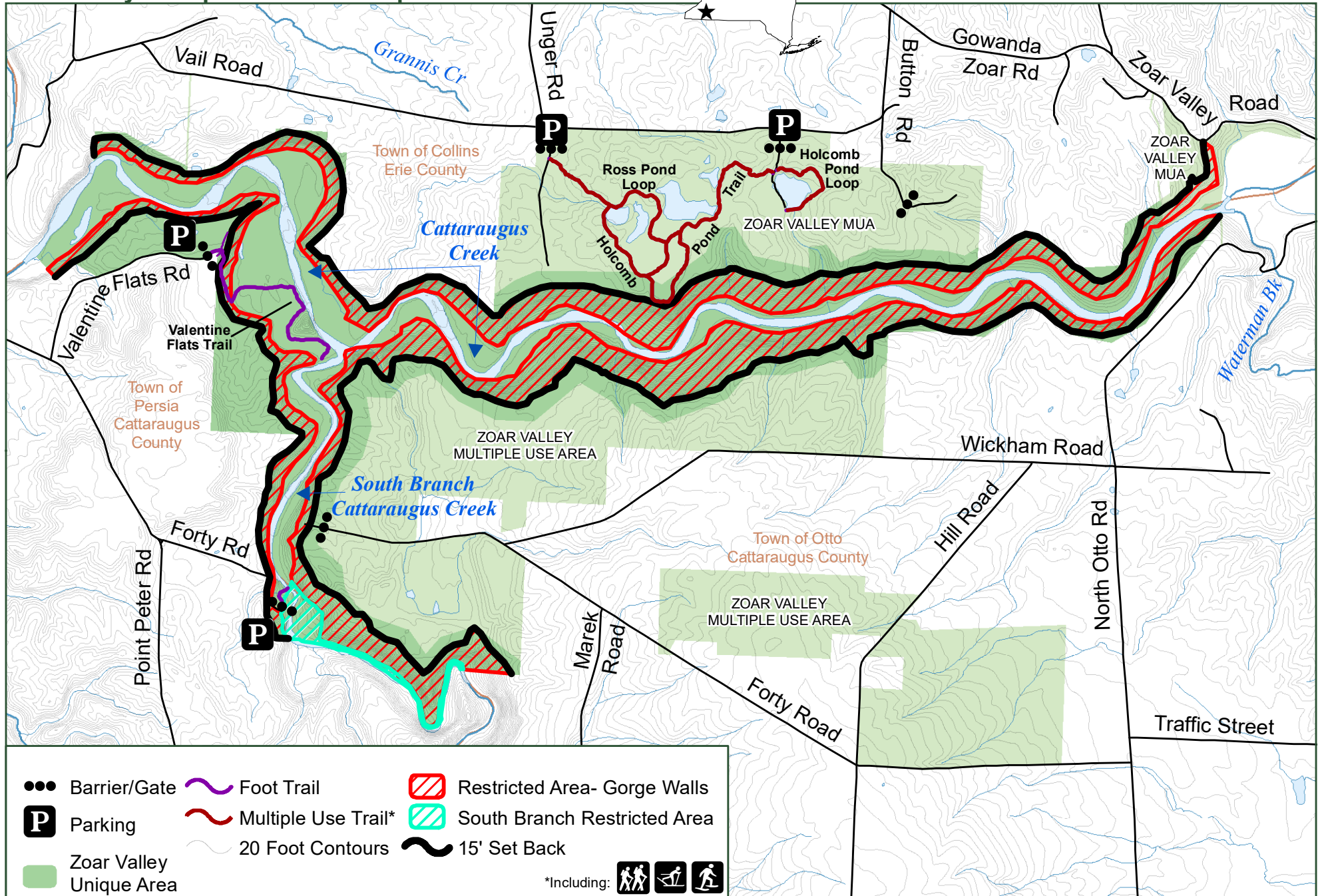


# Zoar Valley Multiple Use and Unique Area

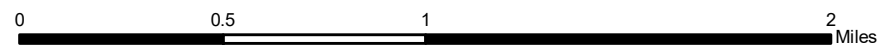


●● Barrier/Gate	~ Foot Trail	▨ Restricted Area- Gorge Walls
<b>P</b> Parking	~ Multiple Use Trail*	▨ South Branch Restricted Area
■ Zoar Valley Unique Area	~ 20 Foot Contours	~ 15' Set Back

\*Including:



Department of Environmental Conservation



Erie and Cattaraugus County