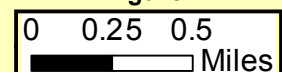
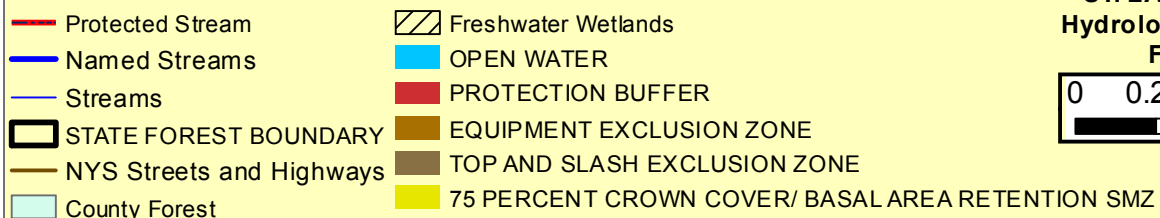
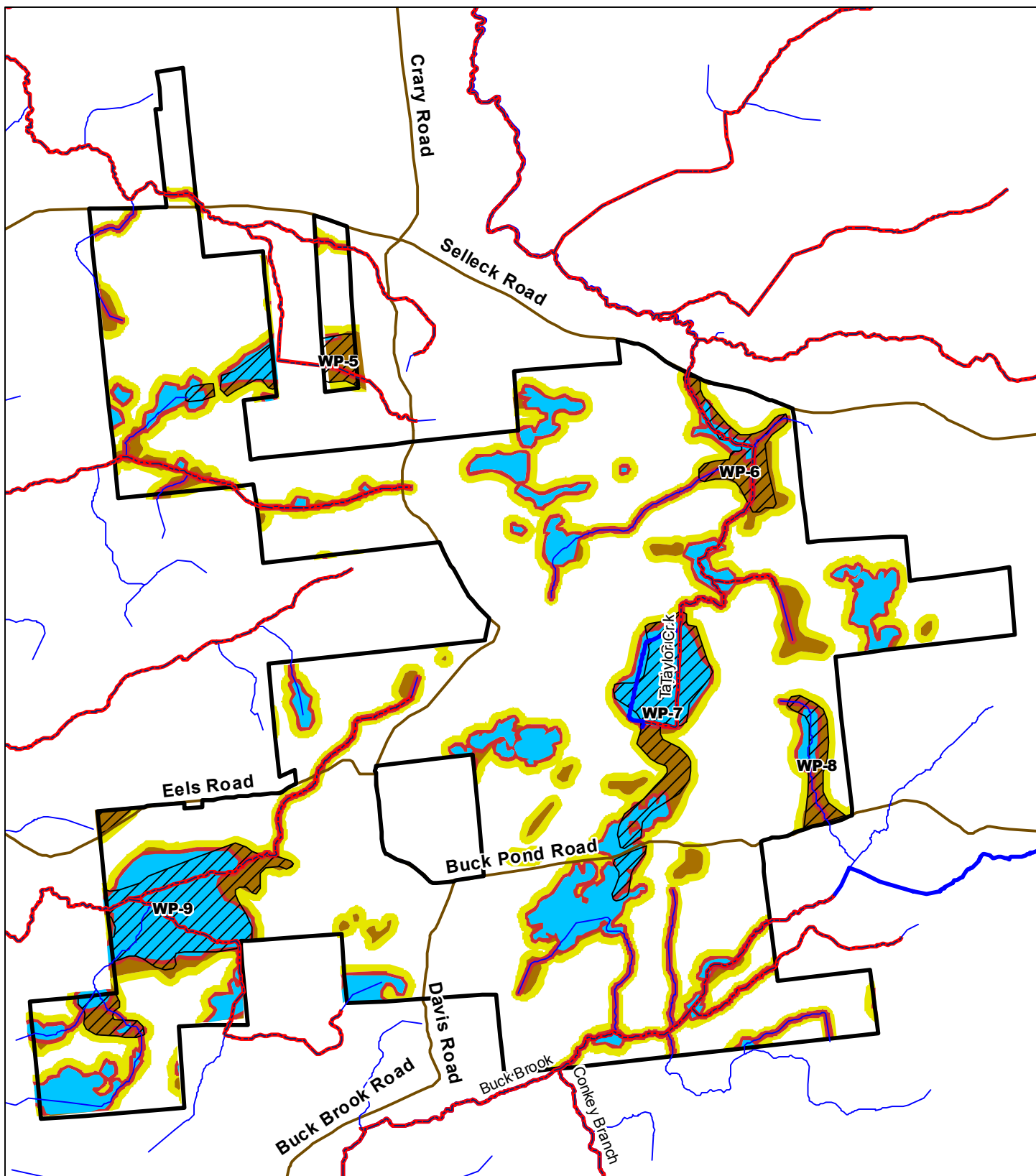
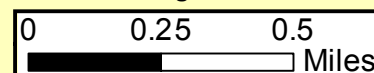


**WHISKEY FLATS STATE FOREST  
ST. LAWRENCE 02  
Hydrology and SMZ's  
Figure 2**

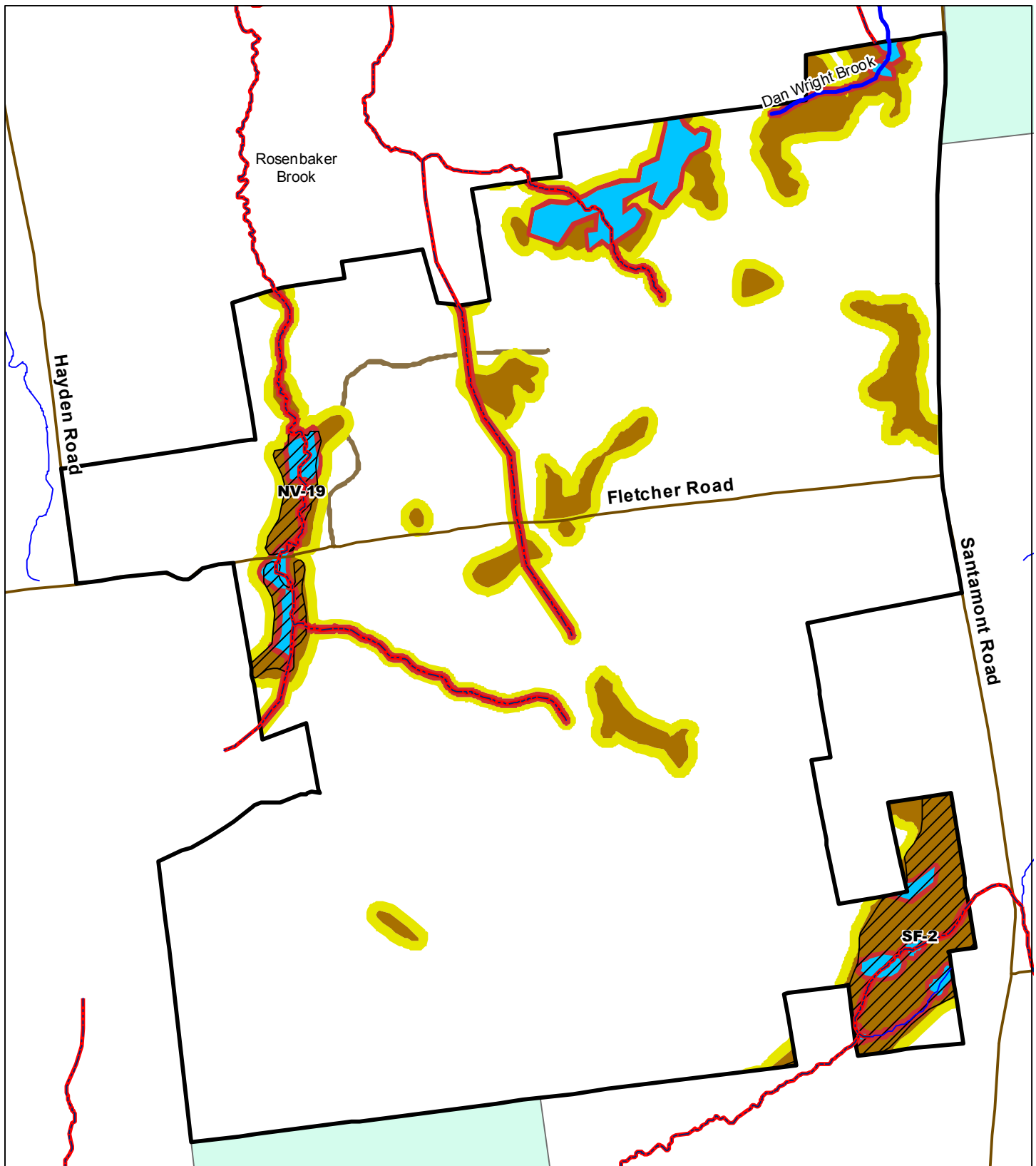




**TAYLOR CREEK STATE FOREST**  
**ST. LAWRENCE 03**  
**Hydrology and SMZ's**  
**Figure 2**

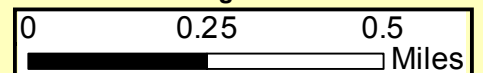


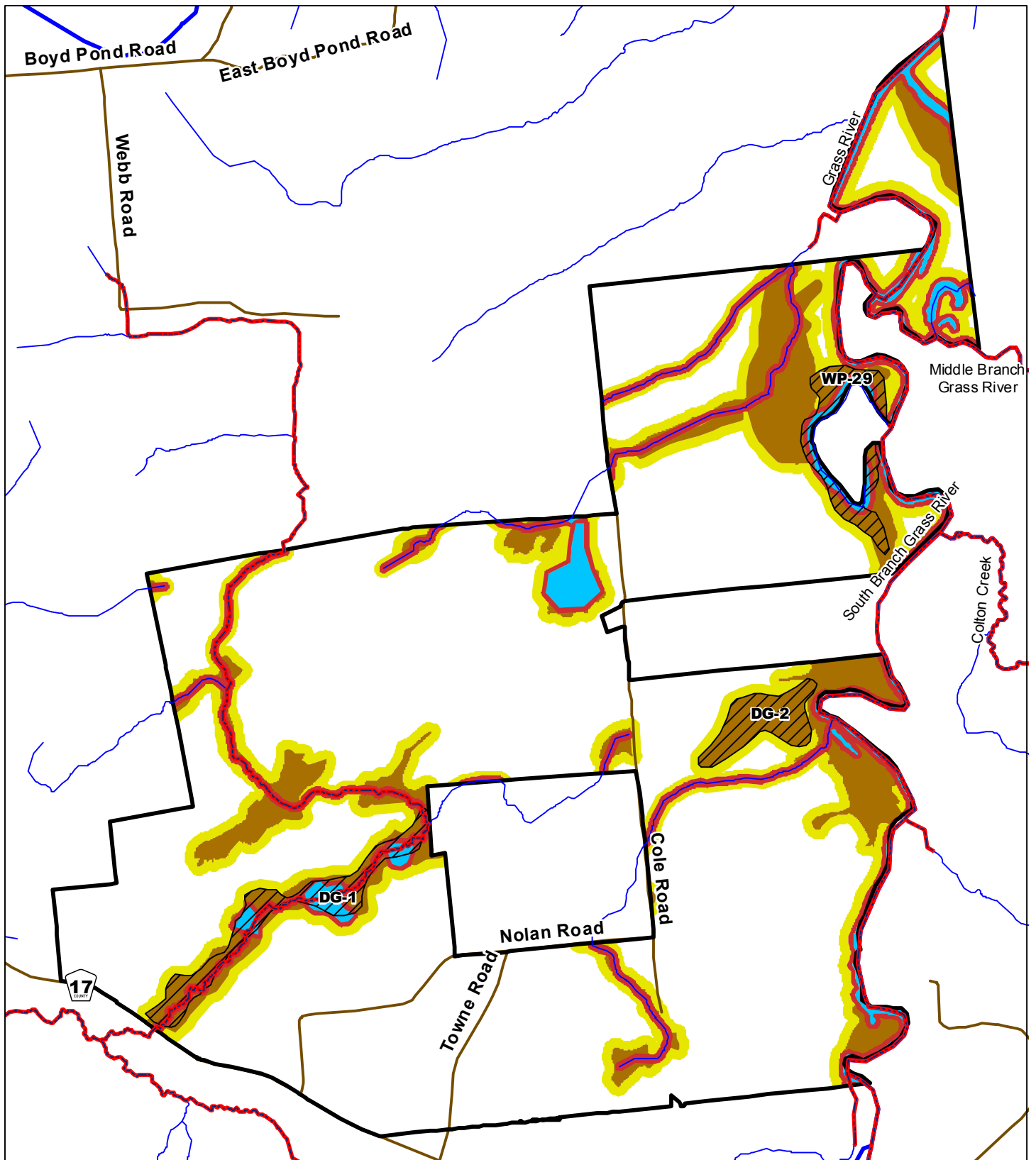
- |  |   |
|--|---|
| <span style="color: red;">—</span> Protected Stream  | <span style="background-color: yellow; border: 1px solid black; display: inline-block; width: 20px; height: 10px;"></span> Freshwater Wetlands                              |
| <span style="color: blue;">—</span> Named Streams  | <span style="background-color: blue; border: 1px solid black; display: inline-block; width: 20px; height: 10px;"></span> OPEN WATER   |
| <span style="color: blue;">—</span> Streams  | <span style="background-color: red; border: 1px solid black; display: inline-block; width: 20px; height: 10px;"></span> PROTECTION BUFFER                                   |
| <span style="border: 2px solid black; display: inline-block; width: 20px; height: 10px;"></span> STATE FOREST BOUNDARY | <span style="background-color: brown; border: 1px solid black; display: inline-block; width: 20px; height: 10px;"></span> EQUIPMENT EXCLUSION ZONE                          |
| <span style="color: brown;">—</span> NYS Streets and Highways  | <span style="background-color: yellow; border: 1px solid black; display: inline-block; width: 20px; height: 10px;"></span> 75 PERCENT CROWN COVER/ BASAL AREA RETENTION SMZ |



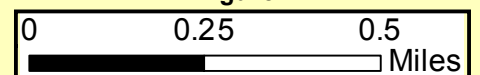
- |  |   |
|--|---|
| <span style="color: red;">—</span> Protected Stream  | <span style="background-color: #f0f0f0; border: 1px solid black; padding: 2px;"> </span> Freshwater Wetlands                              |
| <span style="color: blue;">—</span> Named Streams  | <span style="background-color: #00b0f0; border: 1px solid black; padding: 2px;"> </span> OPEN WATER                                       |
| <span style="color: blue;">—</span> Streams  | <span style="background-color: #ff0000; border: 1px solid black; padding: 2px;"> </span> PROTECTION BUFFER                                |
| <span style="border: 2px solid black; padding: 2px;"> </span> STATE FOREST BOUNDARY                    | <span style="background-color: #800000; border: 1px solid black; padding: 2px;"> </span> EQUIPMENT EXCLUSION ZONE                         |
| <span style="color: brown;">—</span> NYS Streets and Highways  | <span style="background-color: #654321; border: 1px solid black; padding: 2px;"> </span> TOP AND SLASH EXCLUSION ZONE                     |
| <span style="background-color: #e0f7fa; border: 1px solid black; padding: 2px;"> </span> County Forest | <span style="background-color: #ffff00; border: 1px solid black; padding: 2px;"> </span> 75 PERCENT CROWN COVER/ BASAL AREA RETENTION SMZ |

**CATHERINEVILLE STATE FOREST**  
**ST. LAWRENCE 08**  
**Hydrology and SMZ's**  
**Figure 2**

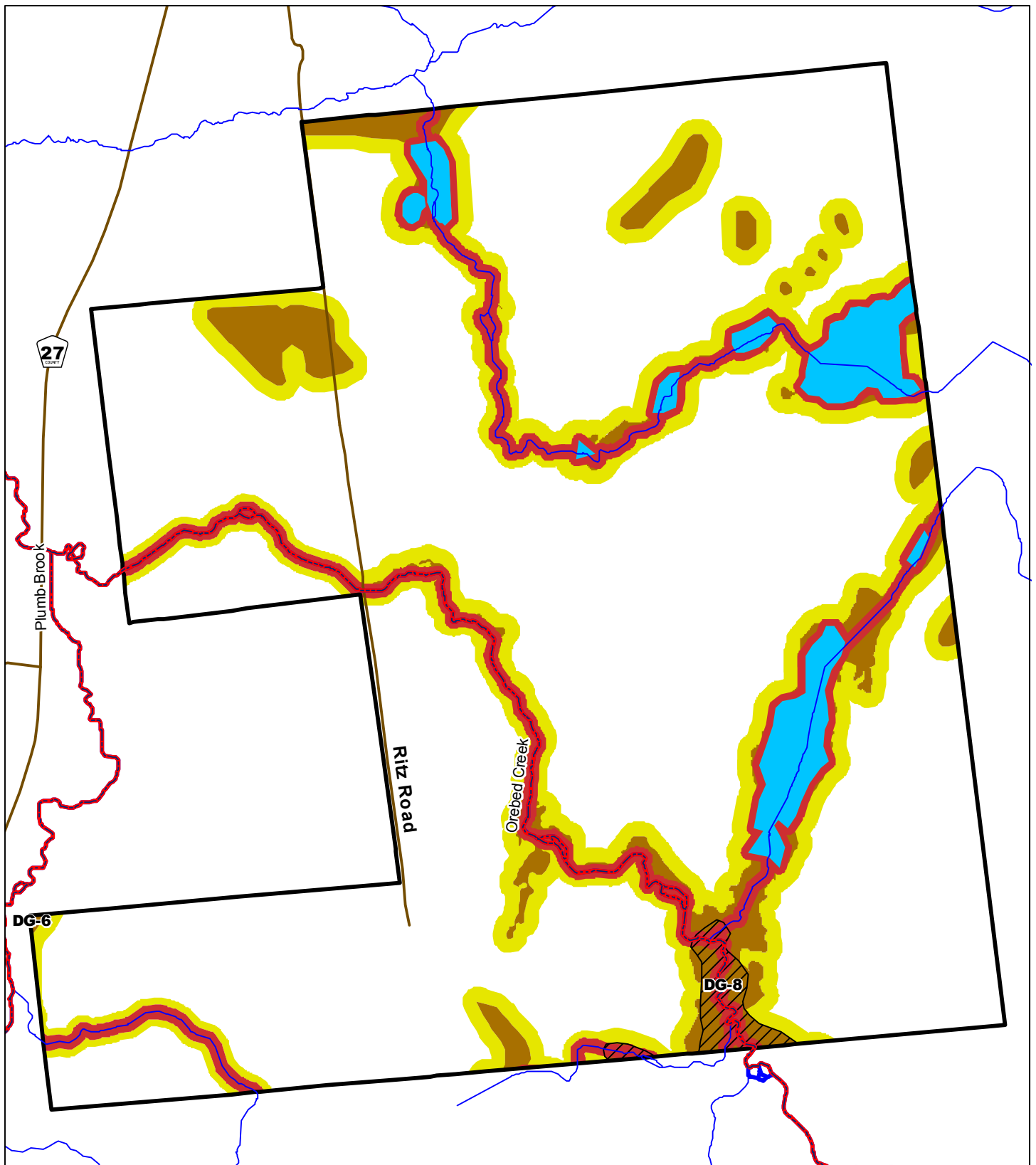




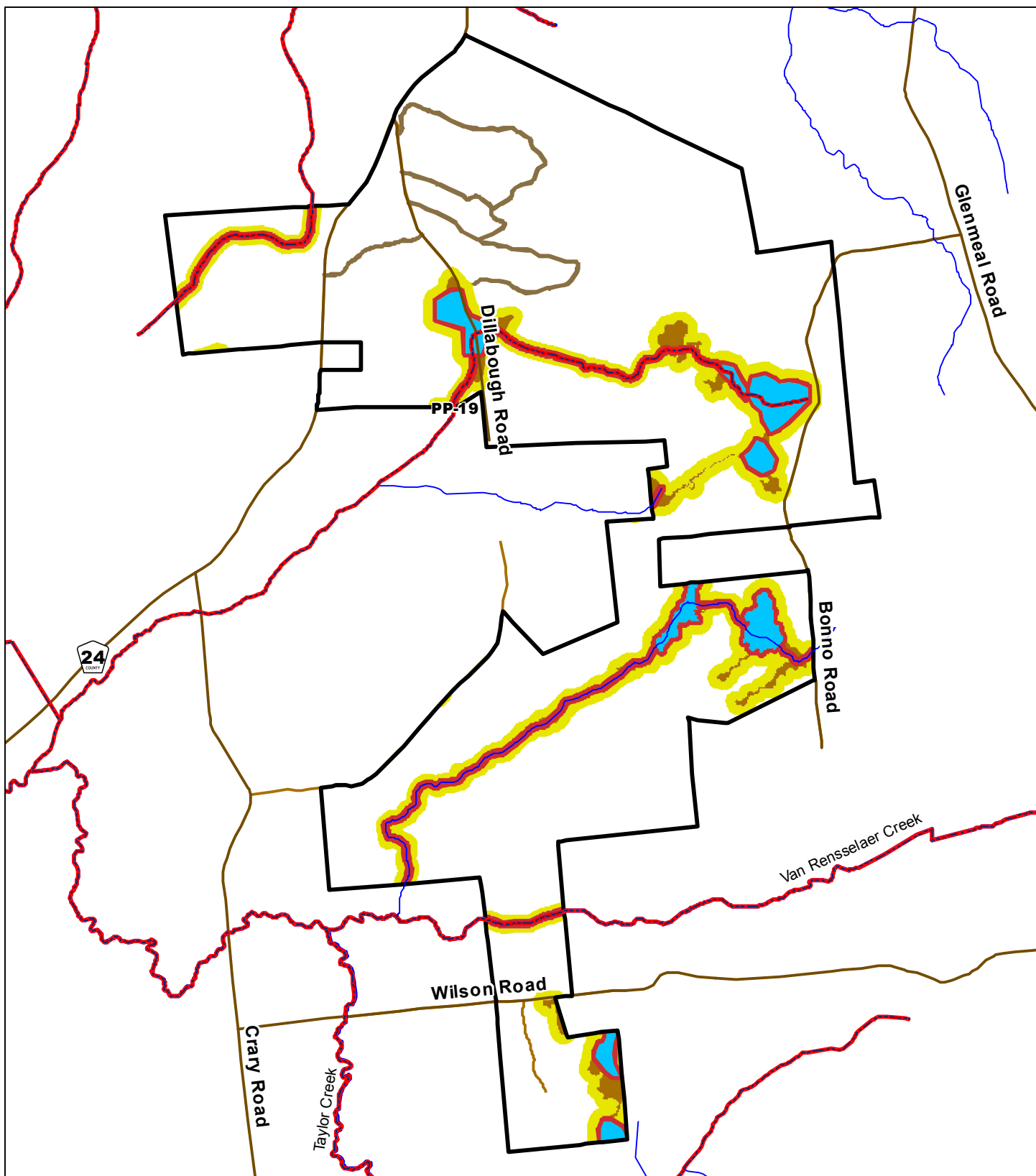
**DEGRASSE STATE FOREST  
ST. LAWRENCE 13  
Hydrology and SMZ's  
Figure 2**



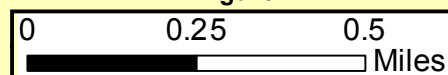
- |   |   |
|---|---|
| <span style="color: red;">—</span> Protected Stream                   | Freshwater Wetlands   |
| <span style="color: blue;">—</span> Named Streams                     | <span style="background-color: lightblue;"> </span> OPEN WATER                                    |
| <span style="color: blue;">—</span> Streams                           | <span style="background-color: red;"> </span> PROTECTION BUFFER                                   |
| <span style="border: 2px solid black;"> </span> STATE FOREST BOUNDARY | <span style="background-color: brown;"> </span> EQUIPMENT EXCLUSION ZONE                          |
| <span style="color: brown;">—</span> NYS Streets and Highways         | <span style="background-color: yellow;"> </span> 75 PERCENT CROWN COVER/ BASAL AREA RETENTION SMZ |



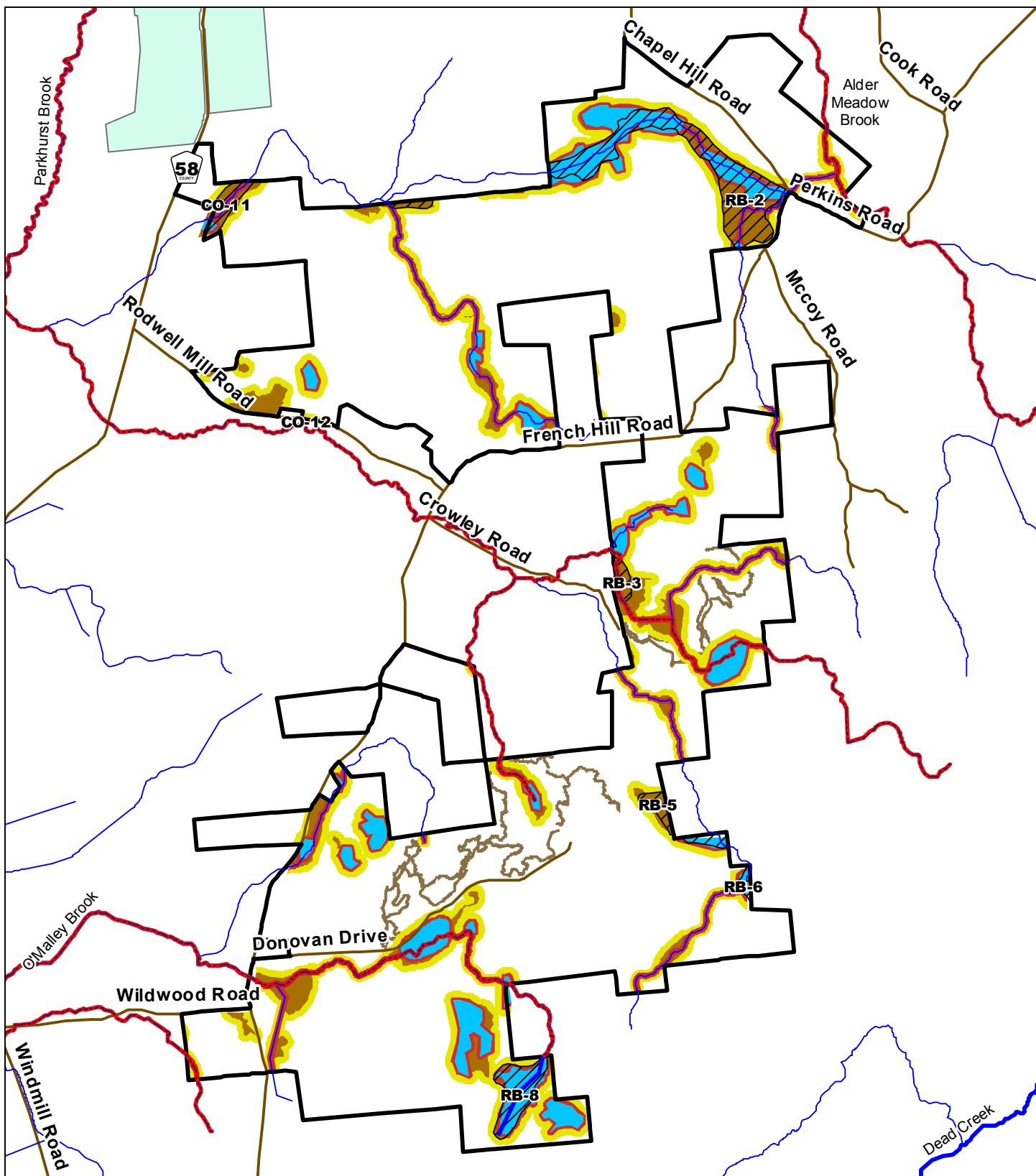
**OREBEK CREEK STATE FOREST  
ST. LAWRENCE 14  
Hydrology and SMZ's  
Figure 2**



**GLENMEAL STATE FOREST  
ST. LAWRENCE 19  
Hydrology and SMZ's  
Figure 2**



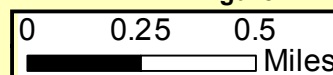
- Protected Stream
- Named Streams
- Streams
- STATE FOREST BOUNDARY
- NYS Streets and Highways
- Freshwater Wetlands
- OPEN WATER
- PROTECTION BUFFER
- EQUIPMENT EXCLUSION ZONE
- TOP AND SLASH EXCLUSION ZONE
- 75 PERCENT CROWN COVER/ BASAL AREA RETENTION SMZ



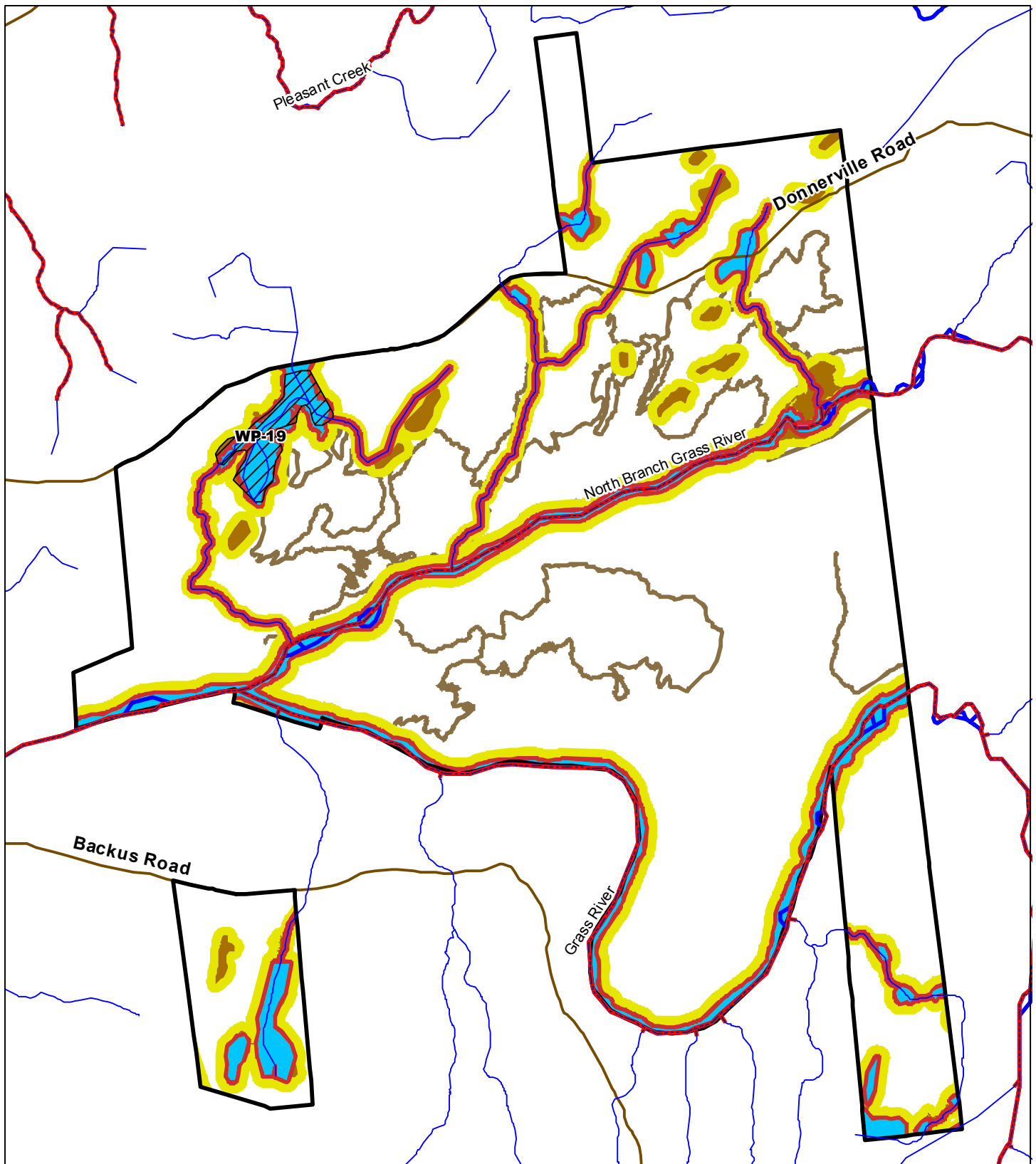
**HIGH FLATS STATE FOREST  
ST. LAWRENCE 20  
Hydrology and SMZ's  
Figure 2**

- Protected Stream
- Named Streams
- Streams
- STATE FOREST BOUNDARY
- NYS Streets and Highways
- County Forest

- Freshwater Wetlands
- OPEN WATER
- PROTECTION BUFFER
- EQUIPMENT EXCLUSION ZONE
- TOP AND SLASH EXCLUSION ZONE
- 75 PERCENT CROWN COVER/ BASAL AREA RETENTION SMZ

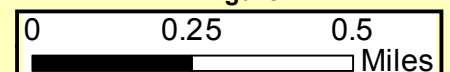




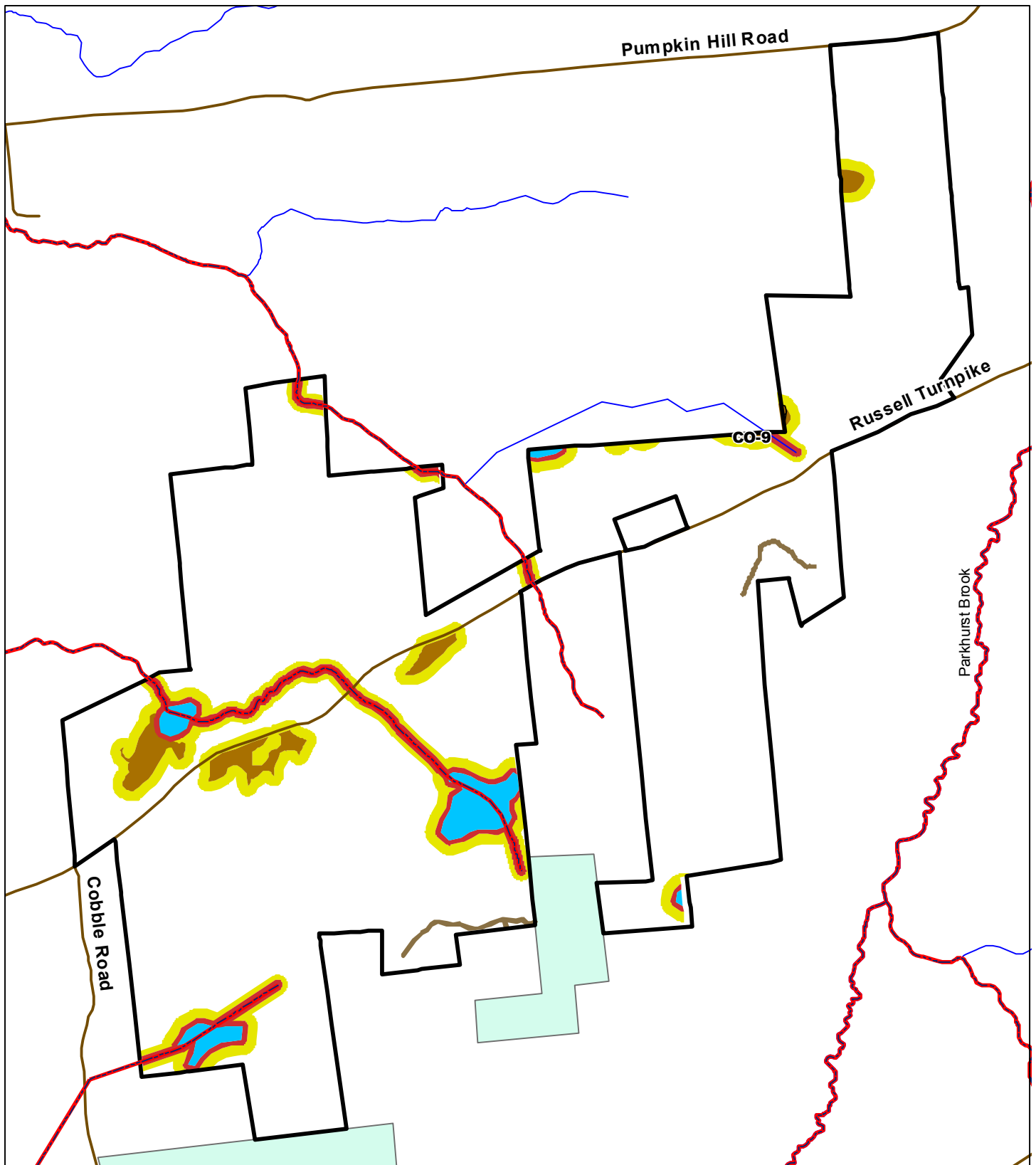


**DOWNERVILLE STATE FOREST**  
**ST. LAWRENCE 26**  
**Hydrology and SMZ's**  
**Figure 2**

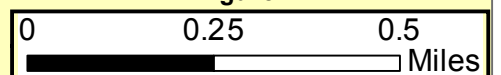
- |   |  |
|---|--|
| <span style="color: red;">—</span> Protected Stream           | Freshwater Wetlands                              |
| <span style="color: blue;">—</span> Named Streams             | OPEN WATER                                       |
| <span style="color: blue;">—</span> Streams                   | PROTECTION BUFFER                                |
| STATE FOREST BOUNDARY   | EQUIPMENT EXCLUSION ZONE                         |
| <span style="color: brown;">—</span> NYS Streets and Highways | TOP AND SLASH EXCLUSION ZONE                     |
|   | 75 PERCENT CROWN COVER/ BASAL AREA RETENTION SMZ |



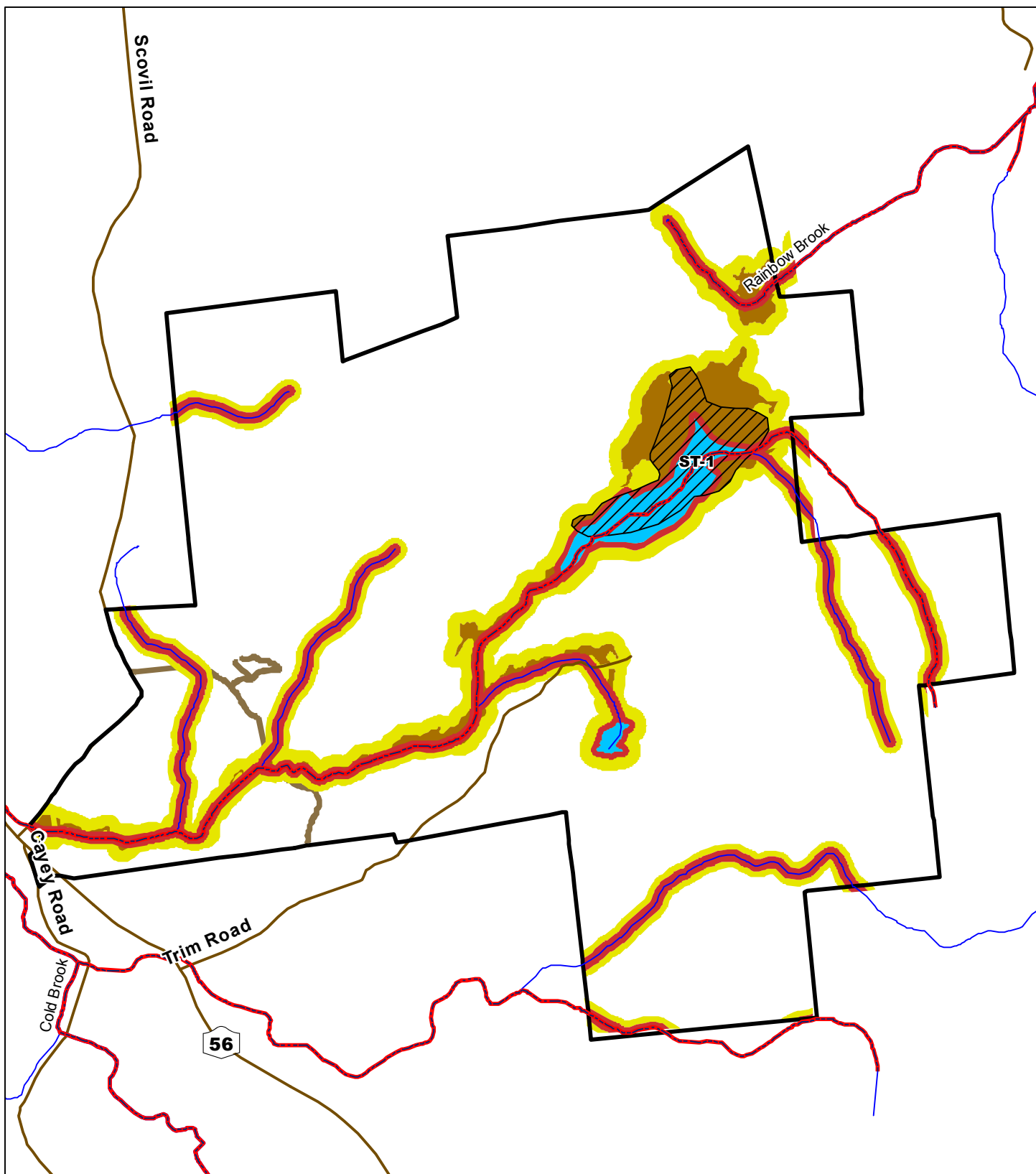




**WEST PARISHVILLE STATE FOREST**  
**ST. LAWRENCE 28**  
**Hydrology and SMZ's**  
**Figure 2**

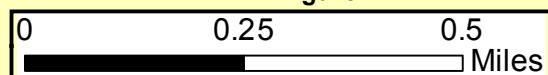


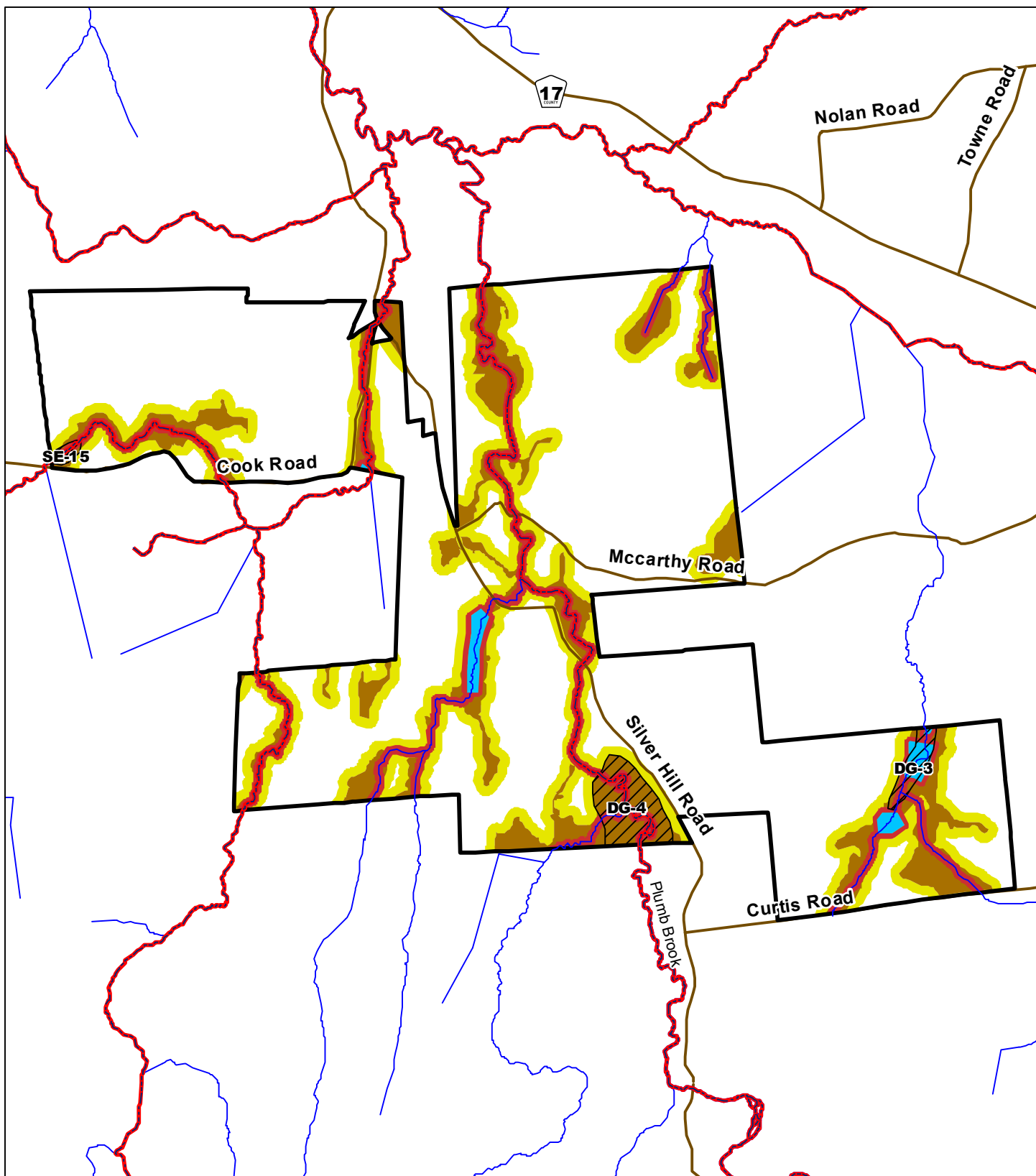
- |   |  |
|---|--|
| <span style="color: red;">—</span> Protected Stream   | <span style="border: 1px solid black; padding: 2px;"> </span> Freshwater Wetlands  |
| <span style="color: blue;">—</span> Named Streams   | <span style="background-color: cyan; border: 1px solid black; padding: 2px;"> </span> OPEN WATER   |
| <span style="color: blue;">—</span> Streams   | <span style="background-color: red; border: 1px solid black; padding: 2px;"> </span> PROTECTION BUFFER                                   |
| <span style="border: 2px solid black; padding: 2px;"> </span> STATE FOREST BOUNDARY                       | <span style="background-color: brown; border: 1px solid black; padding: 2px;"> </span> EQUIPMENT EXCLUSION ZONE                          |
| <span style="color: brown;">—</span> NYS Streets and Highways   | <span style="background-color: darkbrown; border: 1px solid black; padding: 2px;"> </span> TOP AND SLASH EXCLUSION ZONE                  |
| <span style="background-color: lightgreen; border: 1px solid black; padding: 2px;"> </span> County Forest | <span style="background-color: yellow; border: 1px solid black; padding: 2px;"> </span> 75 PERCENT CROWN COVER/ BASAL AREA RETENTION SMZ |



**SNOW BOWL STATE FOREST  
ST. LAWRENCE 34  
Hydrology and SMZ's  
Figure 2**

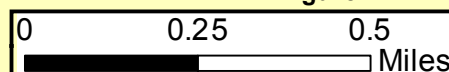
- |   |   |
|---|---|
| <span style="color: red;">—</span> Protected Stream                                 | <span style="background-color: #e0e0e0; border: 1px solid black; padding: 2px;"> </span> Freshwater Wetlands                              |
| <span style="color: blue;">—</span> Named Streams                                   | <span style="background-color: #00bfff; border: 1px solid black; padding: 2px;"> </span> OPEN WATER                                       |
| <span style="color: blue;">—</span> Streams   | <span style="background-color: #ff0000; border: 1px solid black; padding: 2px;"> </span> PROTECTION BUFFER                                |
| <span style="border: 2px solid black; padding: 2px;"> </span> STATE FOREST BOUNDARY | <span style="background-color: #8b4513; border: 1px solid black; padding: 2px;"> </span> EQUIPMENT EXCLUSION ZONE                         |
| <span style="color: brown;">—</span> NYS Streets and Highways                       | <span style="background-color: #654321; border: 1px solid black; padding: 2px;"> </span> TOP AND SLASH EXCLUSION ZONE                     |
|   | <span style="background-color: #ffff00; border: 1px solid black; padding: 2px;"> </span> 75 PERCENT CROWN COVER/ BASAL AREA RETENTION SMZ |

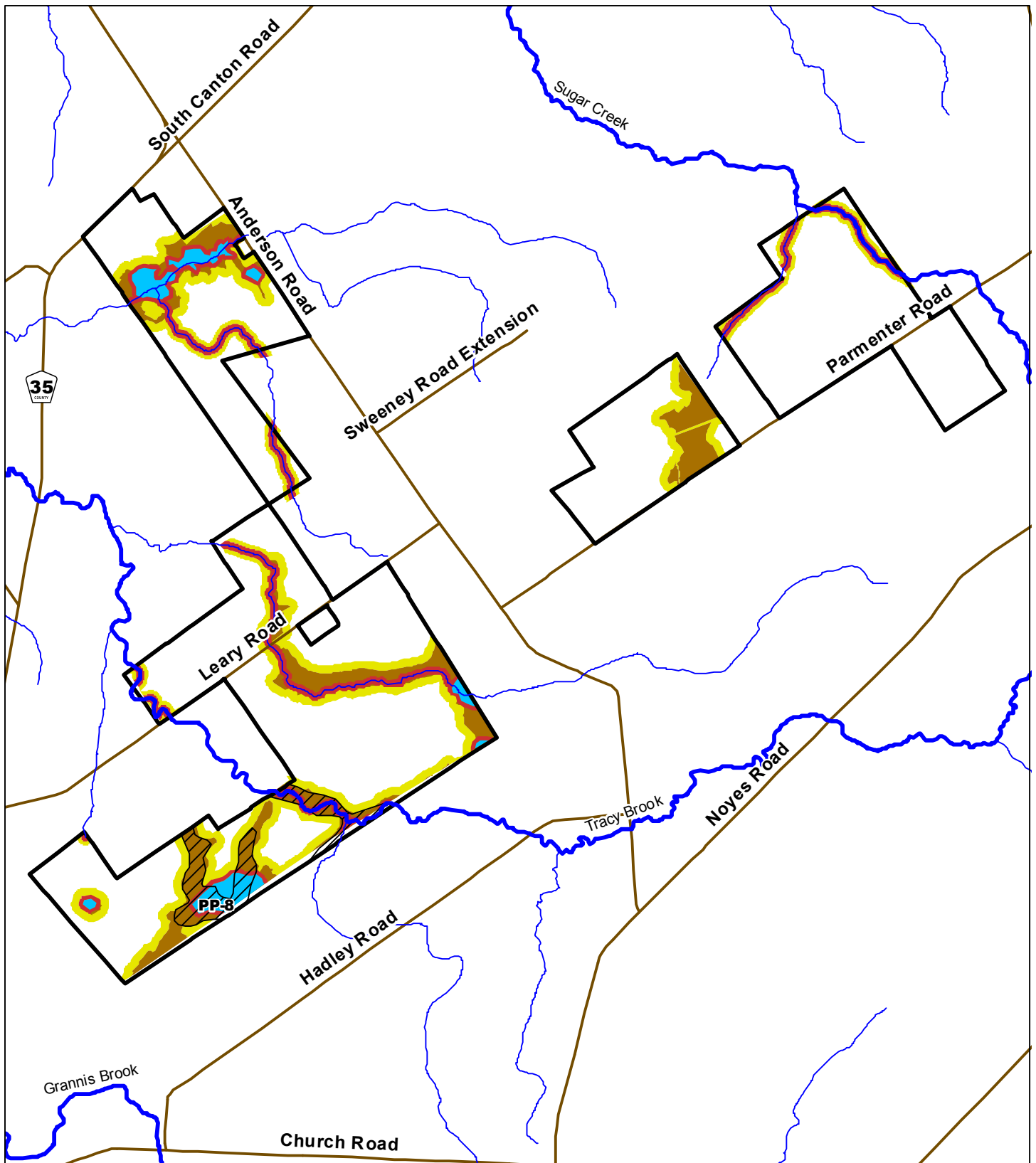




**SILVER HILL STATE FOREST**  
**ST. LAWRENCE 35**  
**Hydrology and SMZ's**  
**Figure 2**

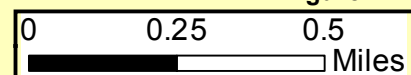
- |   |  |
|---|--|
| <span style="color: red;">—</span> Protected Stream                                 | <span style="border: 1px solid black; padding: 2px;"> </span> Freshwater Wetlands  |
| <span style="color: blue;">—</span> Named Streams                                   | <span style="background-color: lightblue; border: 1px solid black; padding: 2px;"> </span> OPEN WATER                                    |
| <span style="color: blue;">—</span> Streams   | <span style="border: 2px solid red; padding: 2px;"> </span> PROTECTION BUFFER  |
| <span style="border: 3px solid black; padding: 2px;"> </span> STATE FOREST BOUNDARY | <span style="background-color: brown; border: 1px solid black; padding: 2px;"> </span> EQUIPMENT EXCLUSION ZONE                          |
| <span style="color: brown;">—</span> NYS Streets and Highways                       | <span style="background-color: yellow; border: 1px solid black; padding: 2px;"> </span> 75 PERCENT CROWN COVER/ BASAL AREA RETENTION SMZ |

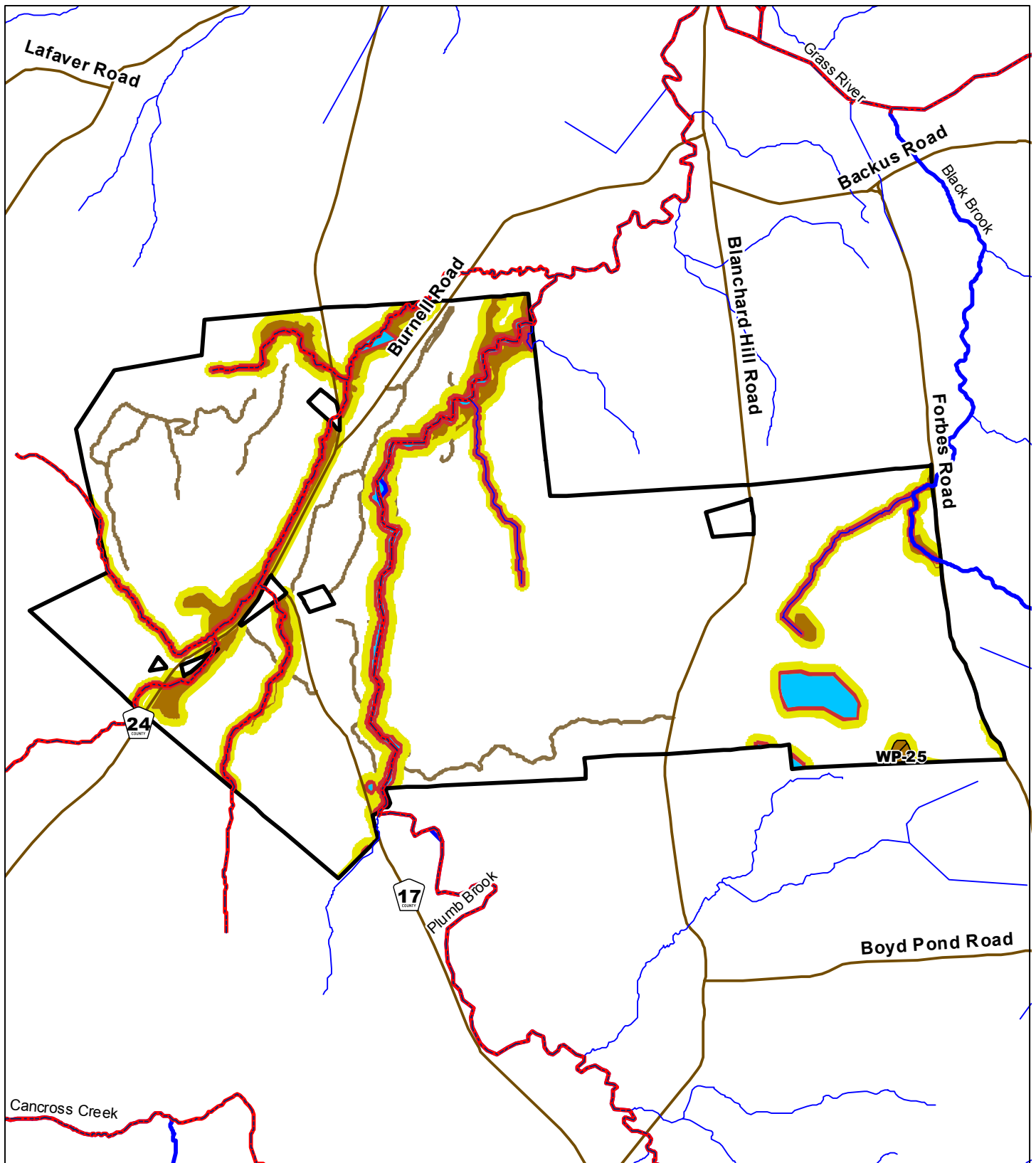




**CRARY MILLS STATE FOREST  
ST. LAWRENCE 40  
Hydrology and SMZ's  
Figure 2**

- |                            |  |
|----------------------------|--|
| — Named Streams            | ▨ Freshwater Wetlands                              |
| — Streams                  | □ OPEN WATER                                       |
| ▭ STATE FOREST BOUNDARY    | ▨ PROTECTION BUFFER                                |
| — NYS Streets and Highways | ▨ EQUIPMENT EXCLUSION ZONE                         |
|                            | ▨ 75 PERCENT CROWN COVER/ BASAL AREA RETENTION SMZ |



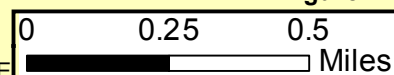


# **WHIPPOORWILL CORNERS STATE FOREST**

**ST. LAWRENCE 41**

**Hydrology and SMZ's**

**Figure 2**



- Protected Stream
- Named Streams
- Streams
- STATE FOREST BOUNDARY
- NYS Streets and Highways
- Freshwater Wetlands
- OPEN WATER
- PROTECTION BUFFER
- EQUIPMENT EXCLUSION ZONE
- TOP AND SLASH EXCLUSION ZONE
- 75 PERCENT CROWN COVER/ BASAL AREA RETENTION SMZ