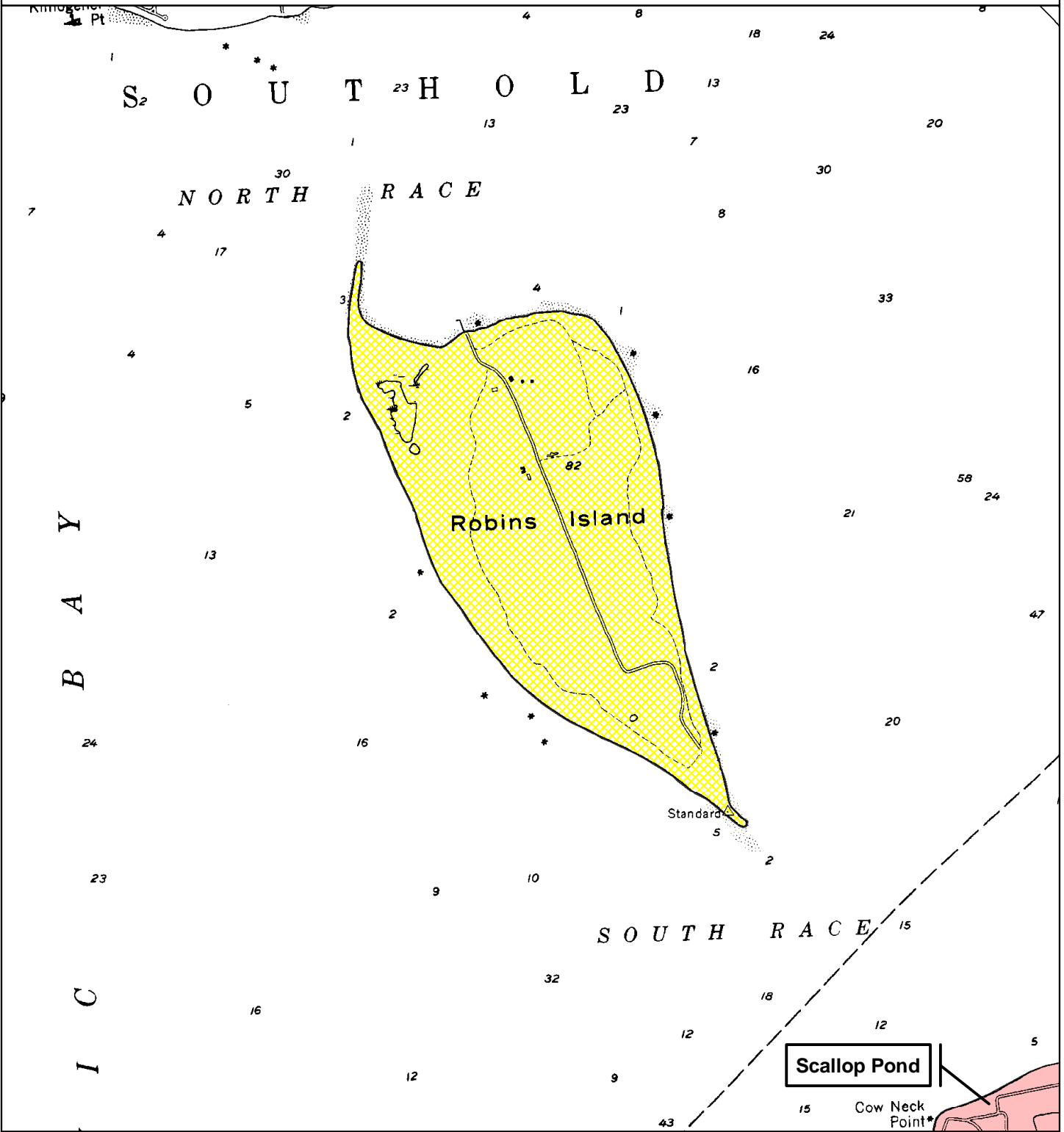


Robins Island Critical Environmental Area (CEA)

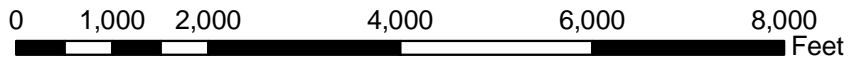
Effective Date of Designation: 2-10-88

Designating Agency: Suffolk County



Legend

- Adjacent CEAs
- Robins Island CEA



1 inch equals 2,000 feet



Base Map: DOT 1:24,000 Planimetric Images

Disclaimer: This map was prepared by the New York State Department of Environmental Conservation using the most current data available. It is deemed accurate but is not guaranteed. NYS DEC is not responsible for any inaccuracies in the data. Please contact the designating authority for additional information regarding legal boundary descriptions.