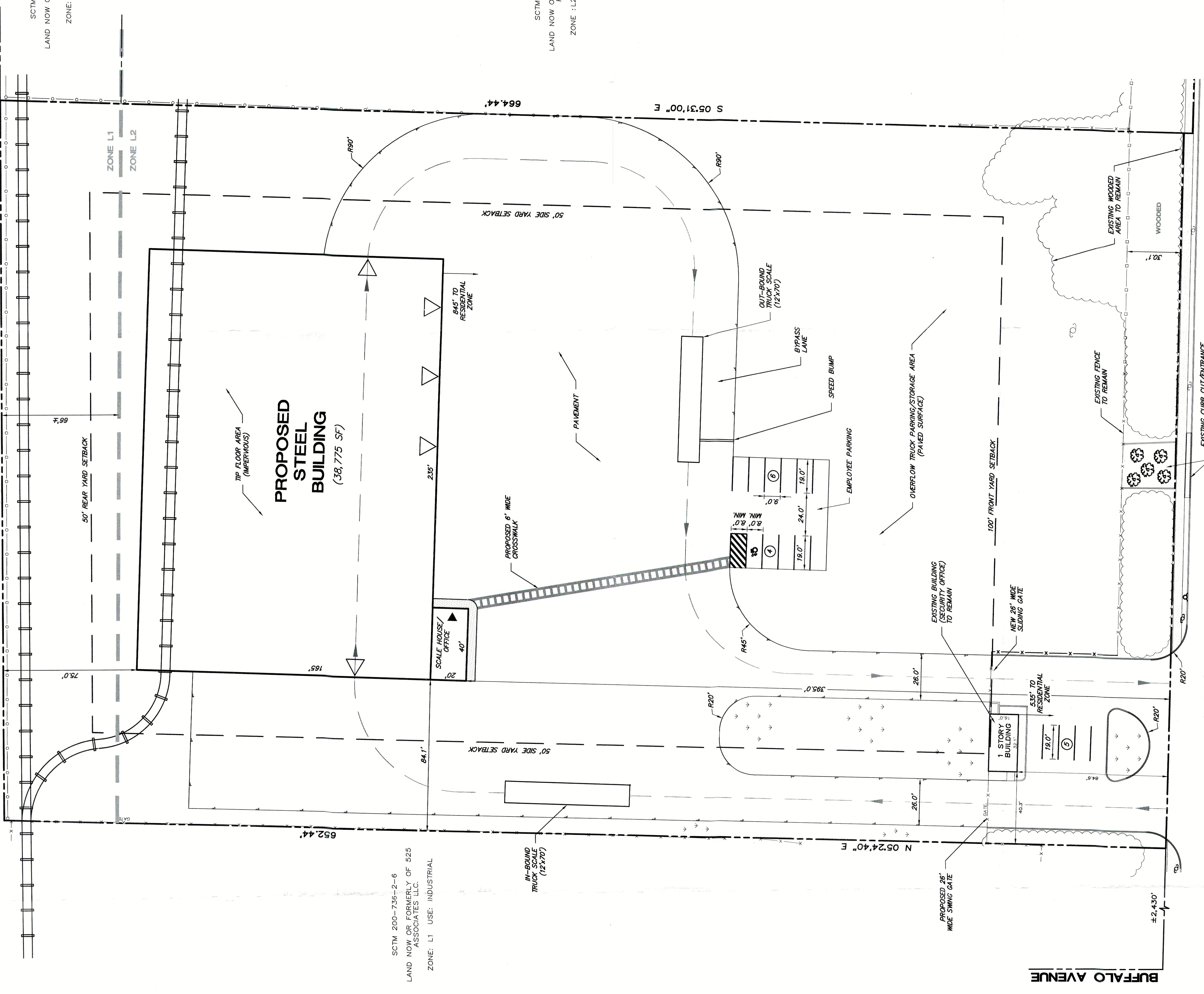


**LONG ISLAND RAILROAD**  
(MAIN LINE)  
S 86°11'50" E 401.40'  
TAX LOT 12

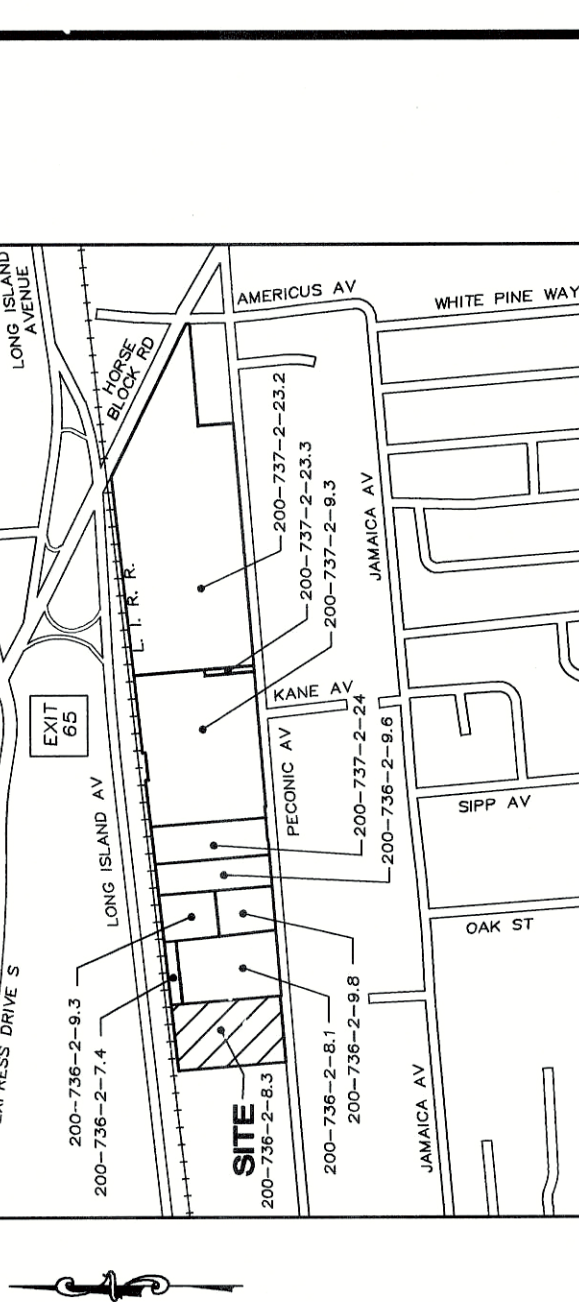


**LEGEND**

EXISTING	PROPOSED
EDGE OF PAVEMENT	EDGE OF PAVEMENT
CONCRETE CURB	CONCRETE CURB
DROP CURB	DROP CURB
CONCRETE	CONCRETE
STANDARD PARKING	STANDARD PARKING
HANDICAP PARKING	HANDICAP PARKING
FENCE	FENCE
UTILITY POLE	UTILITY POLE
OVERHEAD DOOR	OVERHEAD DOOR
BUILDING ENTRANCE	BUILDING ENTRANCE
TRUCK ROUTE	TRUCK ROUTE
MODULINE	MODULINE
VEGETATION	VEGETATION
RAILROAD TRACKS	RAILROAD TRACKS

**SITE DATA**

OWNER/APPLICANT	PROPOSED	EXISTING
PECONIC ENVIRONMENTAL SERVICES CORP. PECONIC AVENUE MEDFORD, NY 11763	283,797 SF (6.08 ACRES)	283,797 SF (6.08 ACRES)
CURRENT ZONING	L INDUSTRIAL 2 (HEAVY INDUSTRY) (S-45 A1C2) & L INDUSTRIAL 1 (LIGHT INDUSTRY) (S-6 AC2)	L INDUSTRIAL 2 (HEAVY INDUSTRY) (S-45 A1C2) & L INDUSTRIAL 1 (LIGHT INDUSTRY) (S-6 AC2)
PROPOSED USE	TRANSFER STATION	TRANSFER STATION
BUILDING FOOTPRINT	38,775 SF (MAIN BLDG) 800 SF (SCALEHOUSE/OFFICE) 40,575 SF (TOTAL)	38,775 SF (MAIN BLDG) 800 SF (SCALEHOUSE/OFFICE) 40,575 SF (TOTAL)
TAX MAP DESIGNATION	0200-736-2-6,3	0200-736-2-6,3



**PARKING CALCULATIONS**

REQUIRED:	PROVIDED:
OFFICE/SECURITY: 1,314 SF @ 1 SPACE/150 SF = 9 SPACES	15 HANDICAP SPACES
WASHROOMS: 38,775 SF @ 1 SPACE/400 SF = 97 SPACES	18 TOTAL SPACES
TOTAL	

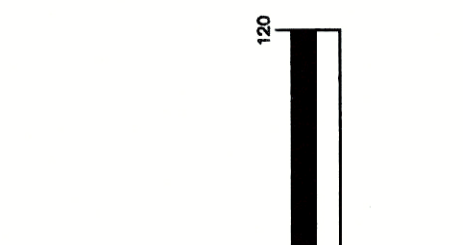
**BER CODE (L-2)**

BER CODE (L-2)	PROPOSED	EXISTING
LOT AREA	6.08 ACRES	6.08 ACRES
LOT WIDTH/ROAD FRONTAGE	200' MIN.	200' MIN.
FRONT YARD SETBACK	100' MIN.	100' MIN.
SIDE YARD SETBACK	50' MIN.	50' MIN.
REAR YARD SETBACK	50' MIN.	50' MIN.
MAX FLOOR AREA RATIO	50%	15.2% (40,088 SF)
MAX HEIGHT OF BUILDING	50'	67' MAX
LANDSCAPE/MATERIAL AREA IN FRONT YD	30% (78,158 SF)	22.7% (58,783 SF)*
LANDSCAPE/MATERIAL AREA IN FRONT YD	8 85-843M(2)	50% OF TOTAL (39,886 SF)

**NOTES:**  
1. THIS PLAN REFERENCES A SURVEY PREPARED BY BARRETT, BONACCO & VAN WEELE, PC DATED 6/26/19.

**PECONIC ENVIRONMENTAL SERVICES CORP.**  
PECONIC AVENUE  
MEDFORD, NY 11763

**Barrett Bonacco & Van Weele, PC**  
Engineers • Surveyors • Planners  
175A Commerce Drive, Medford, NY 11768  
(609) 486-1111  
www.bbypc.com



Tax Map No.: DISTRICT 0200 SECTION 736 BLOCK 2 LOT 8.3

**PECONIC ENVIRONMENTAL SERVICES MEDFORD**

TOWN OF BROOKHAVEN SUFFOLK COUNTY, NY

**SITE PLAN**

Date: JULY 27, 2020  
Scale: 1"=30'  
Project No.: A031423C  
Sheet No.: 1 of 1