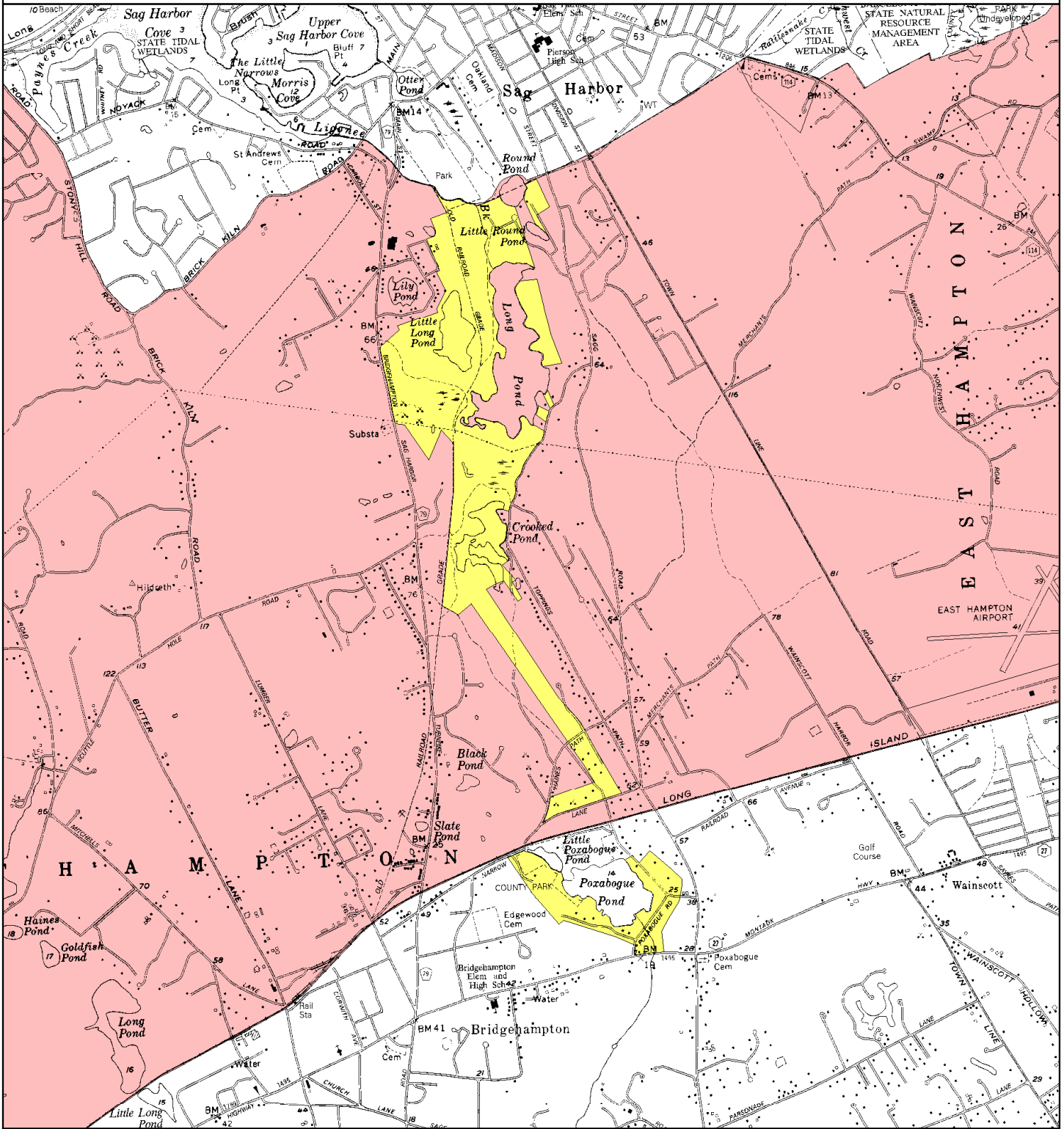


Long Pond Critical Environmental Area (CEA)

Effective Date of Designation: 2-10-88

Designating Agency: Suffolk County



Legend

- Long Pond CEA
- Adjacent CEAs



1 inch equals 3,000 feet

For Adjacent CEAs see map:
SGPA Map #6 CEA



Base Map: 1: 24,000 DOT Planimetric Image

Disclaimer: This map was prepared by the New York State Department of Environmental Conservation using the most current data available. It is deemed accurate but is not guaranteed. NYS DEC is not responsible for any inaccuracies in the data. Please contact the designating authority for additional information regarding legal boundary descriptions. SGPA Maps 1 through 9 represent a portion of the SGPA designated as a Critical Environmental Area.