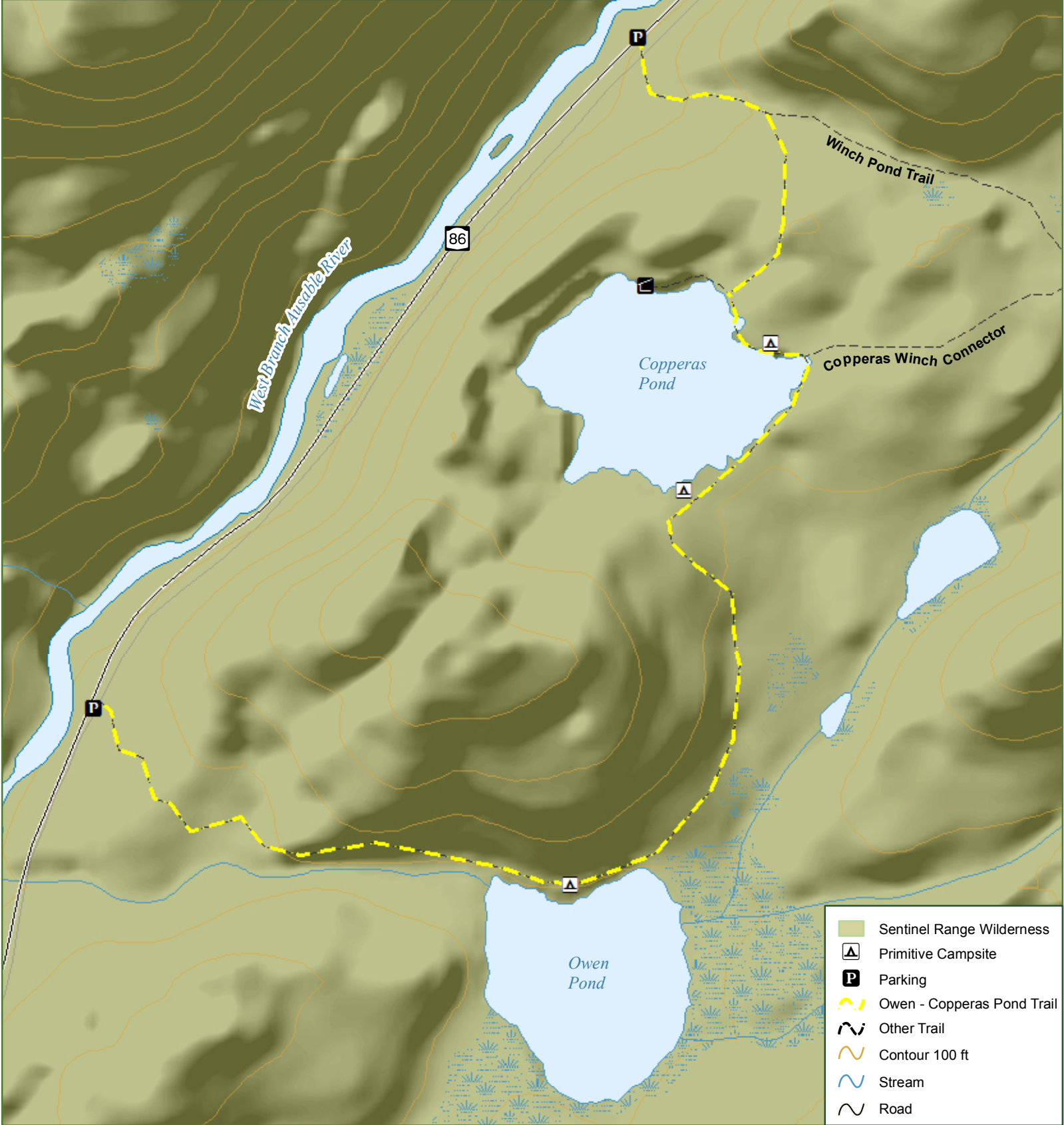


# Sentinel Range Wilderness - Owen & Copperas Pond Trails

Owen Pond - Copperas Pond Trail extends 1.7 miles between two trailheads located on State Route 86. The forested trail ascends 0.5 mile and 200 feet from the Owen Pond Trailhead, much of it along the outlet of Owen Pond, before reaching the pond itself. The picturesque pond sits at the foot of Kilburn Mountain. The trail continues another 0.7 mile ascending another 200 feet before descending 100 feet to the clear waters of Copperas Pond. A 0.75-mile loop trail to Winch Pond is located just west of Copperas Pond. Winch Pond is more of a wetland pond, but is picturesque in its own right. Copperas Pond can be reached from the Copperas Pond Trailhead with a 0.5-mile hike which ascends 450 feet.



	Sentinel Range Wilderness
	Primitive Campsite
	Parking
	Owen - Copperas Pond Trail
	Other Trail
	Contour 100 ft
	Stream
	Road



**Department of Environmental Conservation**

\*\*\*Please respect private property. Stay on designated trails\*\*\*  
 \*\*\*Practice Leave No Trace Principles\*\*\*  
 \*\*\*Emergency contact 518-891-0235\*\*\*

