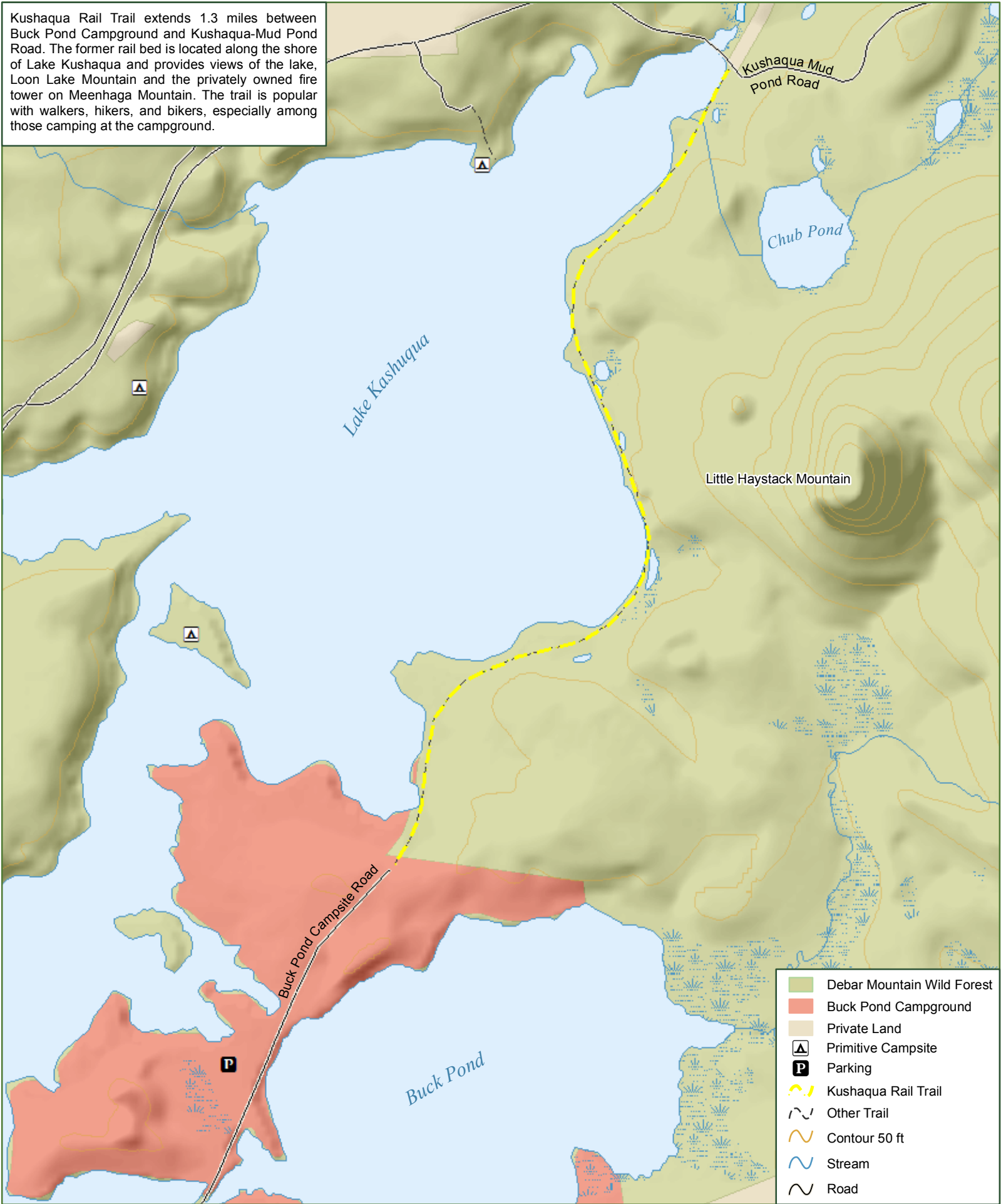


# Debar Mountain Wild Forest - Kushaqua Rail Trail

Kushaqua Rail Trail extends 1.3 miles between Buck Pond Campground and Kushaqua-Mud Pond Road. The former rail bed is located along the shore of Lake Kushaqua and provides views of the lake, Loon Lake Mountain and the privately owned fire tower on Meenhaga Mountain. The trail is popular with walkers, hikers, and bikers, especially among those camping at the campground.



- Debar Mountain Wild Forest
- Buck Pond Campground
- Private Land
- ▲ Primitive Campsite
- P Parking
- Kushaqua Rail Trail
- Other Trail
- Contour 50 ft
- Stream
- Road



**Department of Environmental Conservation**

\*\*\*Please respect private property. Stay on designated trails\*\*\*  
 \*\*\*Practice Leave No Trace Principles\*\*\*  
 \*\*\*Emergency contact 518-891-0235\*\*\*

