



**Department of
Environmental
Conservation**

Elm Ridge Wild Forest Amendment

Mt. Hayden Parcel (Town of Windham)

August 2016

Mt. Hayden - Background

- The Mt. Hayden Parcel was originally acquired by the NYC DEP in 2002 and 2005 under a Land Acquisition Program to protect water quality
- Land transfer to DEC in 2013 to expand on recreational opportunities
- 806 Acre Parcel



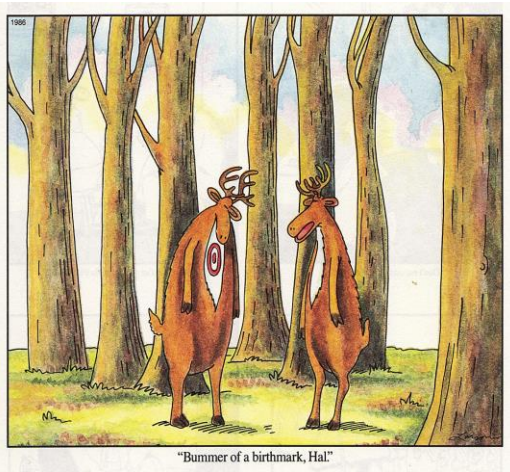
Purpose of the Meeting

- Initial scoping meeting – Put your thinking caps on!
- Chance for the public to provide comments and suggestions
- Public Comments Accepted until September 26
r4.ump@dec.ny.gov

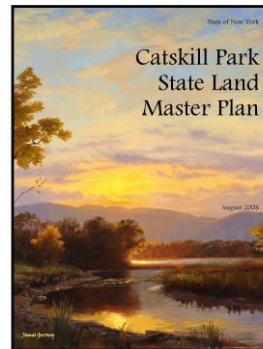


Environmental Considerations

Regulations / Policy / Guidance



Wildlife Considerations



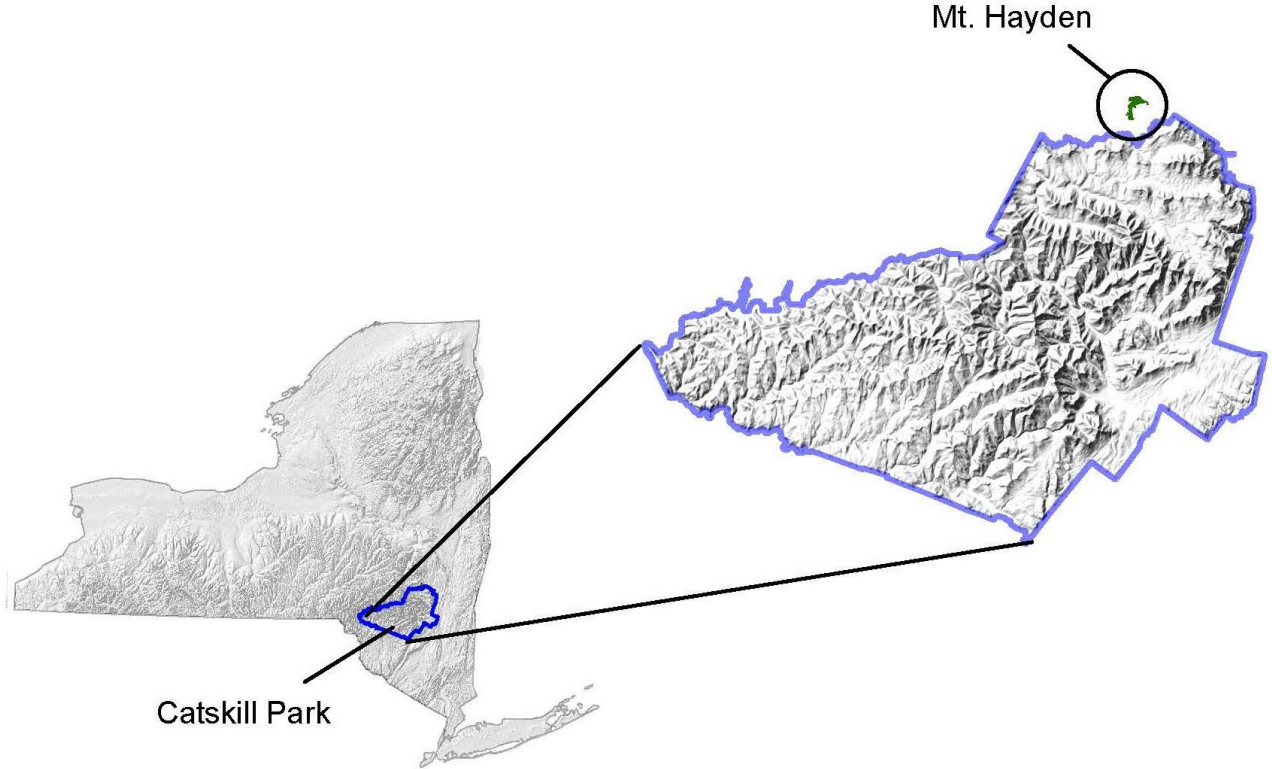
Social Considerations



Unit Management Planning

Mt. Hayden – Where is it?

- About 30 Minutes from I-87
- About 3 Miles from the downtown of Windham
- Access Potential from Nauvoo Rd or Begley Rd.

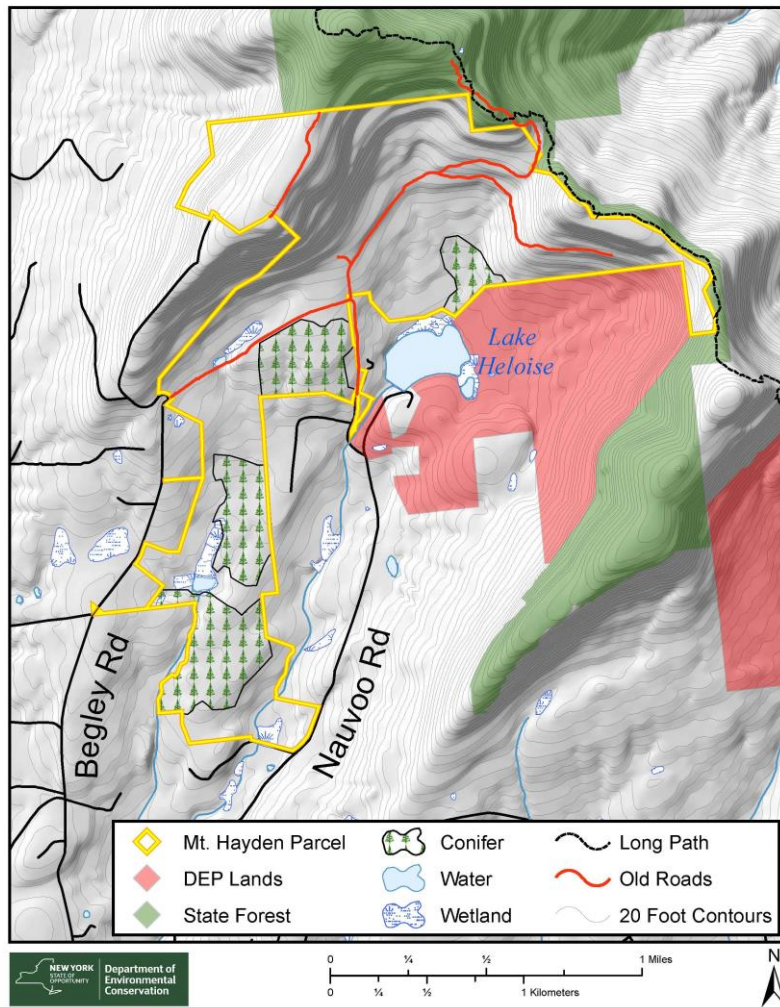


Elm Ridge Wild Forest

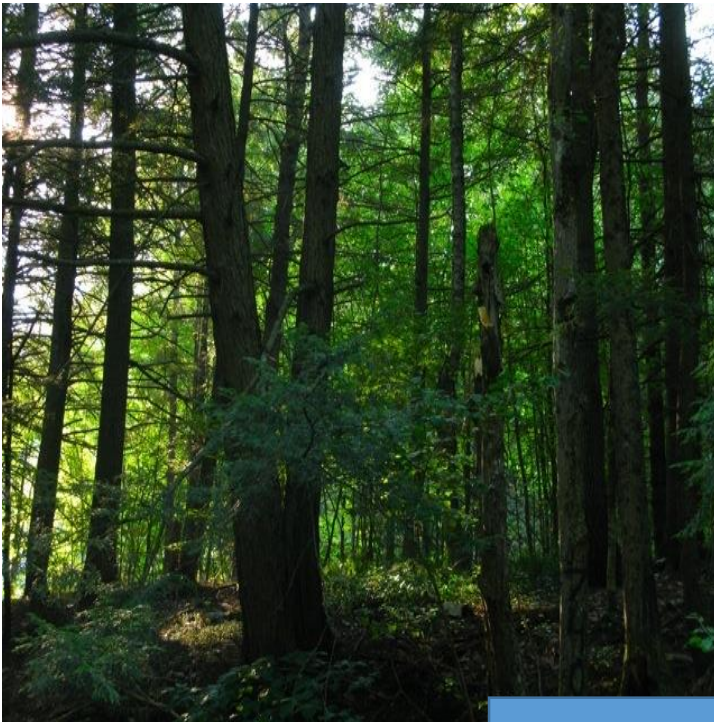
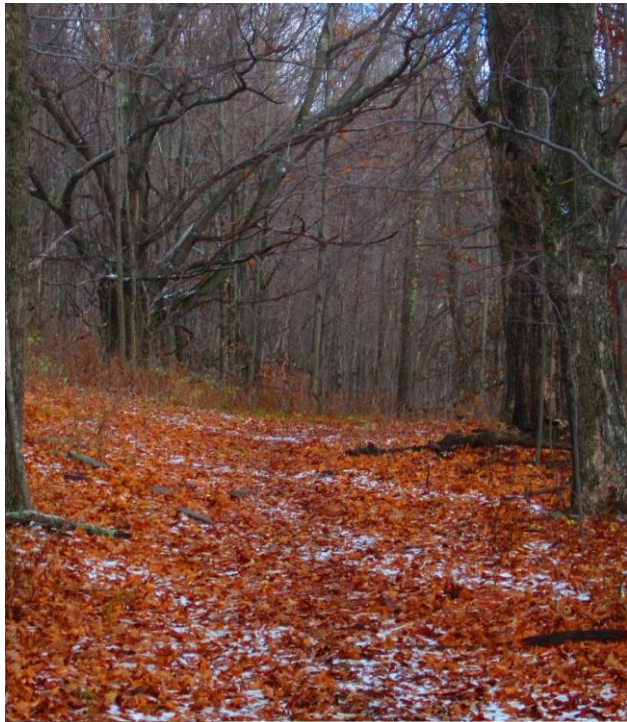
- Mt. Hayden is planned to become part of the Elm Ridge Wild Forest Unit. It is planned to be included in the Elm Ridge Wild Forest Unit Management plan in the form of an amendment.



Mt. Hayden - Current Condition



Photos



Put Your Thinking Caps On!

- Would you like a 2 Mile hiking loop?
- Would you like access to the Long Path?
- Would you like a scenic campsite?
- Would you like areas to be left alone for hunting or to simply be left alone?
- Would you like some trails for bicycles?
- Would you like Scenic Vistas?



Thank You

- Maxwell Wolckenhauer
- Natural Resource Planner
- Stamford, NY
- R4.ump@dec.ny.gov
- (607)652-7365

Connect with us:

Facebook: www.facebook.com/NYSDEC

Twitter: twitter.com/NYSDEC

Flickr: www.flickr.com/photos/nysdec

Elm Ridge Wild Forest Unit
Management Plan Webpage

<http://www.dec.ny.gov/lands/22612.html>



Department of
Environmental
Conservation