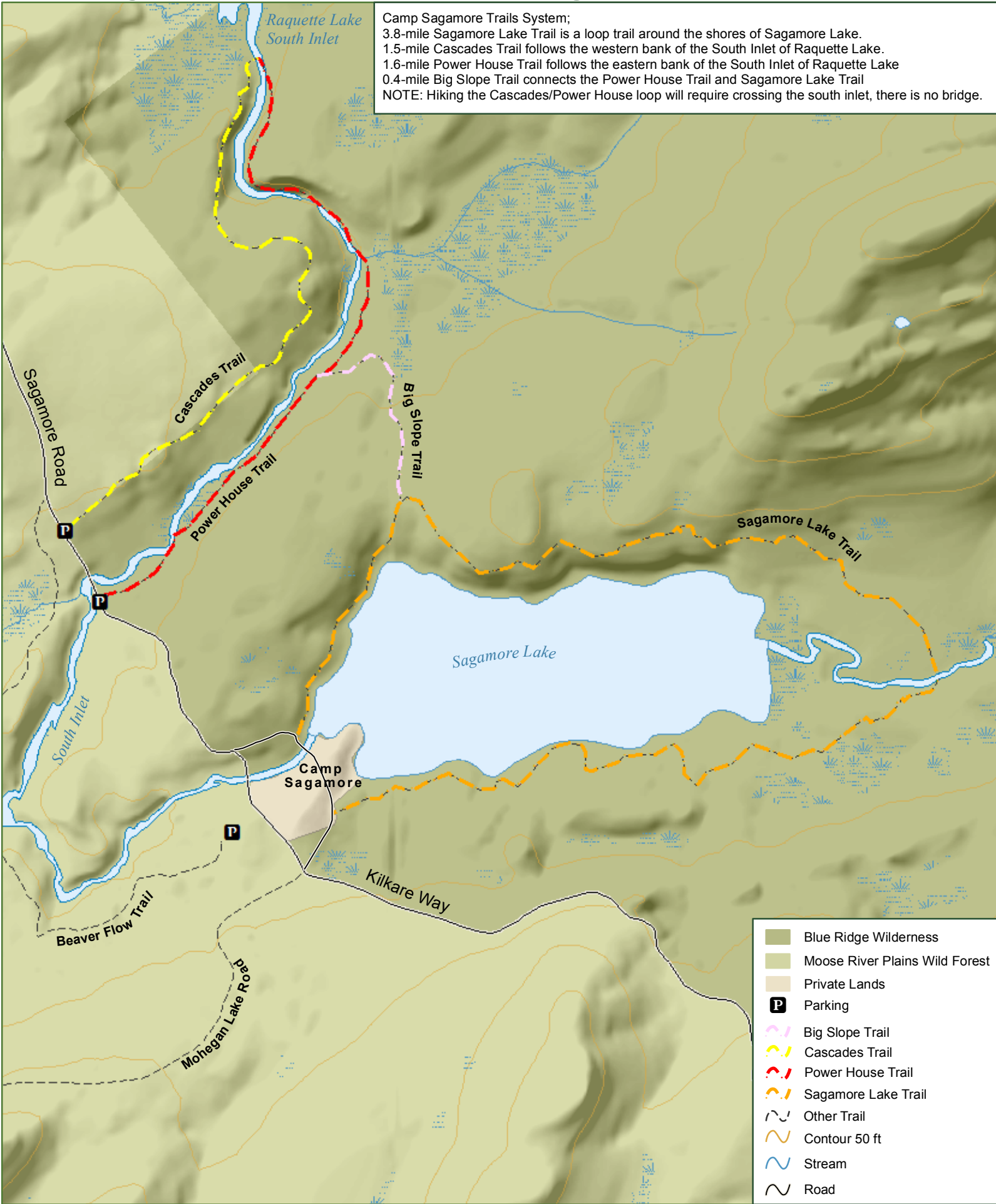


Blue Ridge Wilderness - Great Camp Sagamore Trails

Camp Sagamore Trails System;
 3.8-mile Sagamore Lake Trail is a loop trail around the shores of Sagamore Lake.
 1.5-mile Cascades Trail follows the western bank of the South Inlet of Raquette Lake.
 1.6-mile Power House Trail follows the eastern bank of the South Inlet of Raquette Lake
 0.4-mile Big Slope Trail connects the Power House Trail and Sagamore Lake Trail
 NOTE: Hiking the Cascades/Power House loop will require crossing the south inlet, there is no bridge.



- Blue Ridge Wilderness
- Moose River Plains Wild Forest
- Private Lands
- P Parking
- Big Slope Trail
- Cascades Trail
- Power House Trail
- Sagamore Lake Trail
- Other Trail
- Contour 50 ft
- Stream
- Road



Department of Environmental Conservation

Please respect private property. Stay on designated trails
 Practice Leave No Trace Principles
 Emergency contact 518-891-0235

