



New York State Department of

ENVIRONMENTAL CONSERVATION

www.dec.ny.gov

Public Fishing Rights Maps

West Branch Fish Creek

Description of Fishery

The West Branch of Fish Creek is located in Oswego and Oneida counties. There are 27.8 miles of Public Fishing Rights (PFR's) along this medium sized stream. Stocked brown trout and the occasional wild brook trout can be caught in the creek which is stocked annually with around 12,600 one year-old brown trout (8-10") and 200 two year-old brown trout (12-14").

There is also the chance of catching an Atlantic salmon in the creek. The Fish Creek Atlantic Salmon Club operates a hatchery on the West Branch in McConnellsville, and stocks the resulting Atlantic salmon fry into area streams.

Fishing Regulations

Statewide Angling Regulations apply **EXCEPT** as noted below:

Oswego County: Trout - Any Size, Limit 5 with no more than 2 longer than 12", April 1 - Oct 15

Oneida County: Trout - Any Size, Limit 5 with no more than 2 longer than 12", April 1 - Nov 30

From mouth upstream to dam in McConnellsville Fishing prohibited March 16 until the opening of walleye season in May

Fish Species Present

Brown Trout



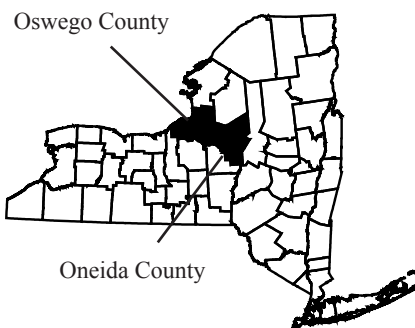
Brook Trout



Atlantic Salmon



Location



About Public Fishing Rights

Public Fishing Rights (PFR's) are permanent easements purchased by the NYSDEC from willing landowners, giving anglers the right to fish and walk along the bank (usually a 33' strip on one or both banks of the stream). This right is for the purpose of fishing only and no other purpose. Treat the land with respect to insure the continuation of this right and privilege. Fishing privileges may be available on some other private lands with permission of the land owner. Courtesy toward the land-owner and respect for their property will insure their continued use.

These generalized location maps are intended to aid anglers in finding PFR segments and are not survey quality. Width of displayed PFR may be wider than reality to make it more visible on the maps. Please look for this PFR sign to ensure that you are in the right location and have legal access to the stream bank.



For more information on this creek or if you believe PFR marked areas on these maps are incorrect or missing PFR signs, please call the Region 7 Fisheries office: (607) 753-3095 ext. 213.

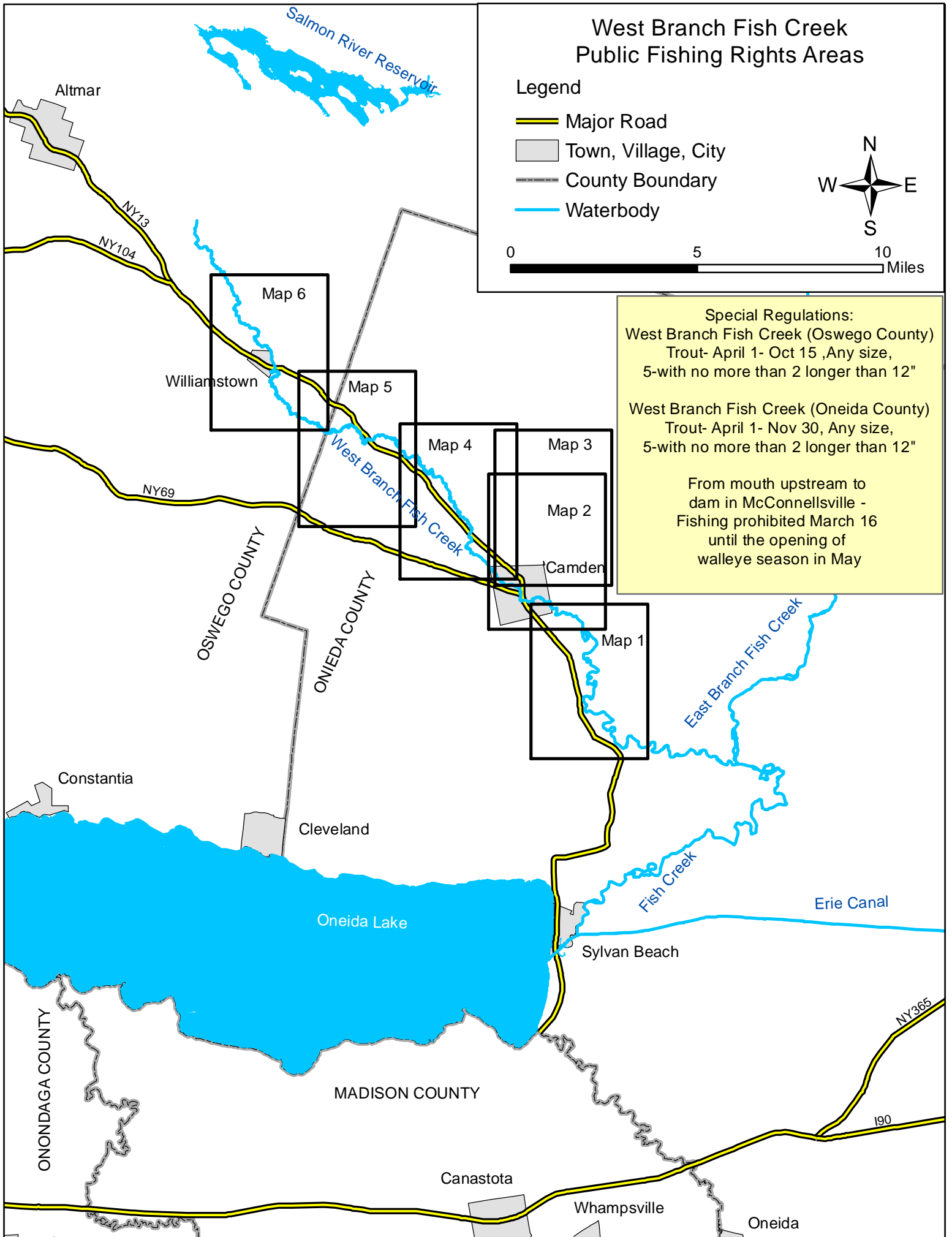
West Branch Fish Creek Public Fishing Rights Areas

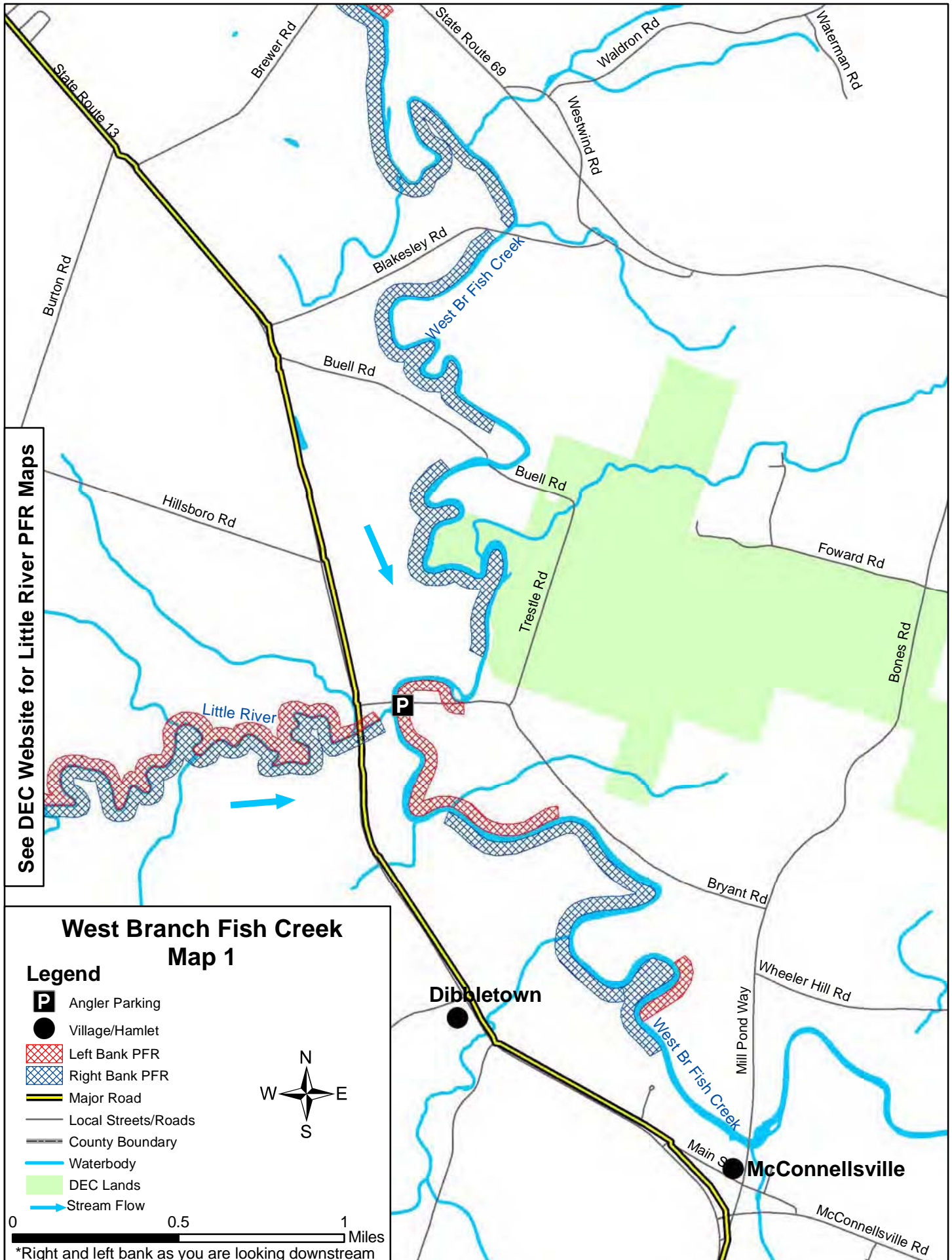
Legend

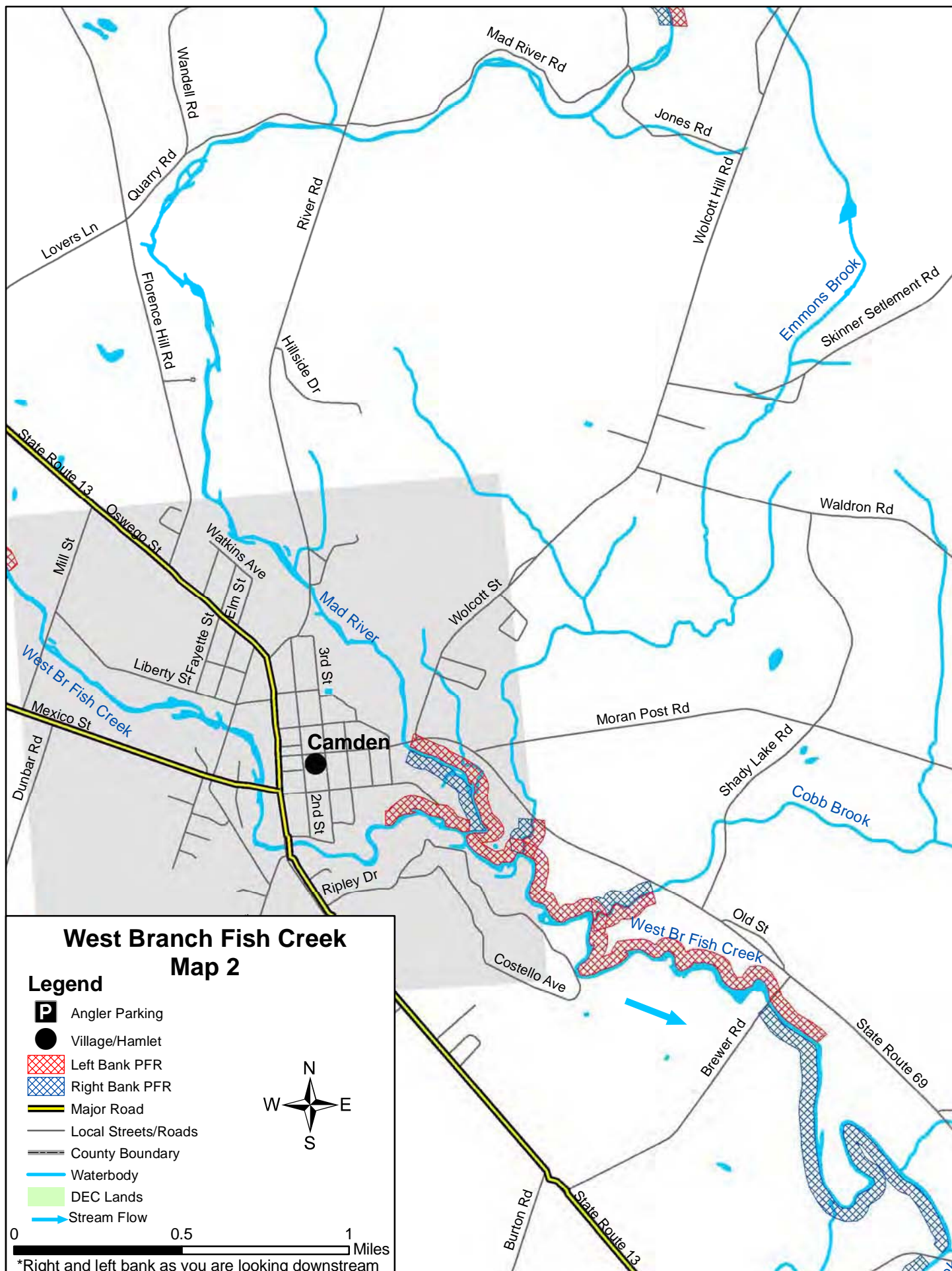
- Major Road
- Town, Village, City
- County Boundary
- Waterbody



0 5 10 Miles







West Branch Fish Creek/ Mad River Map 3

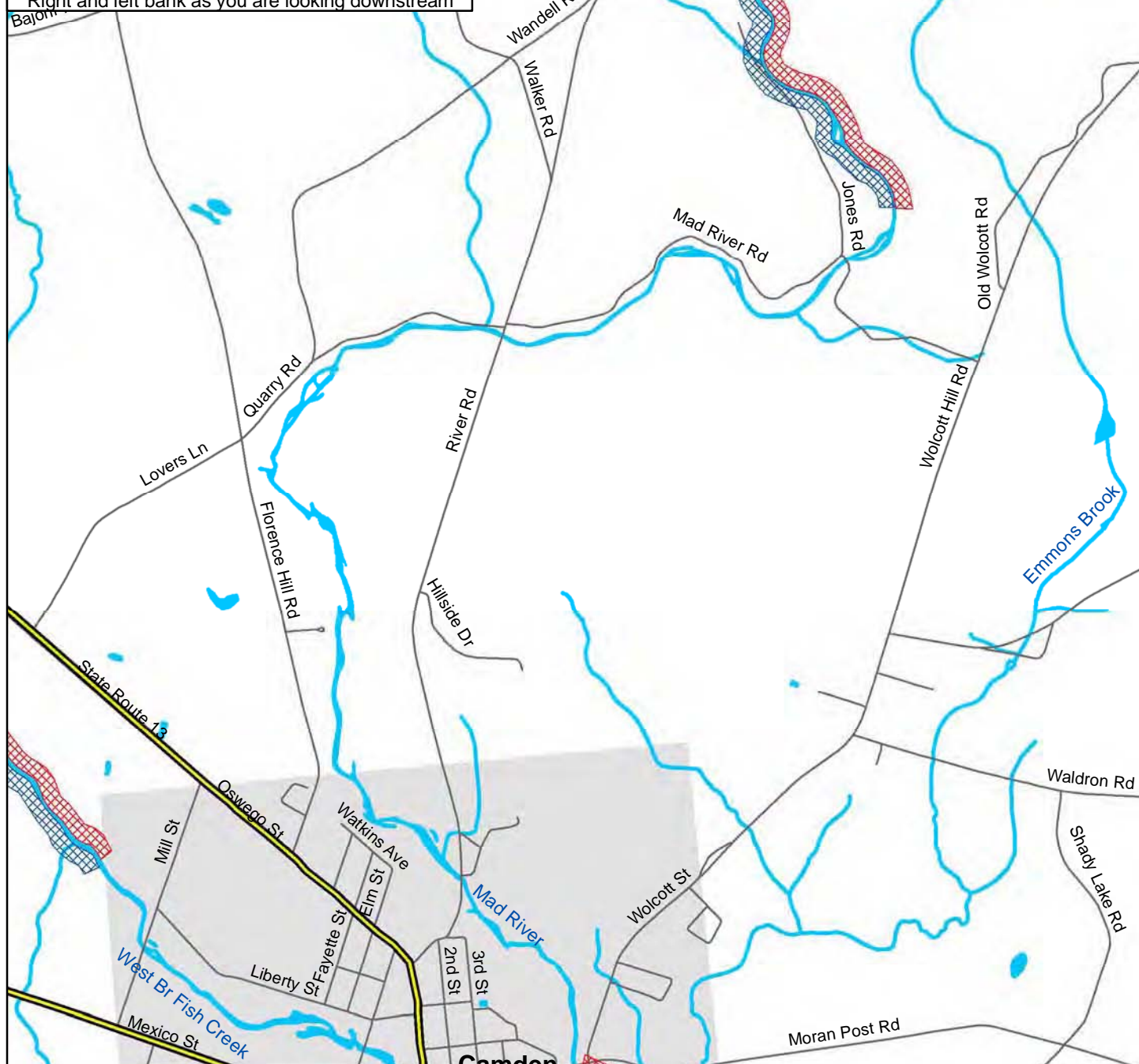
Legend

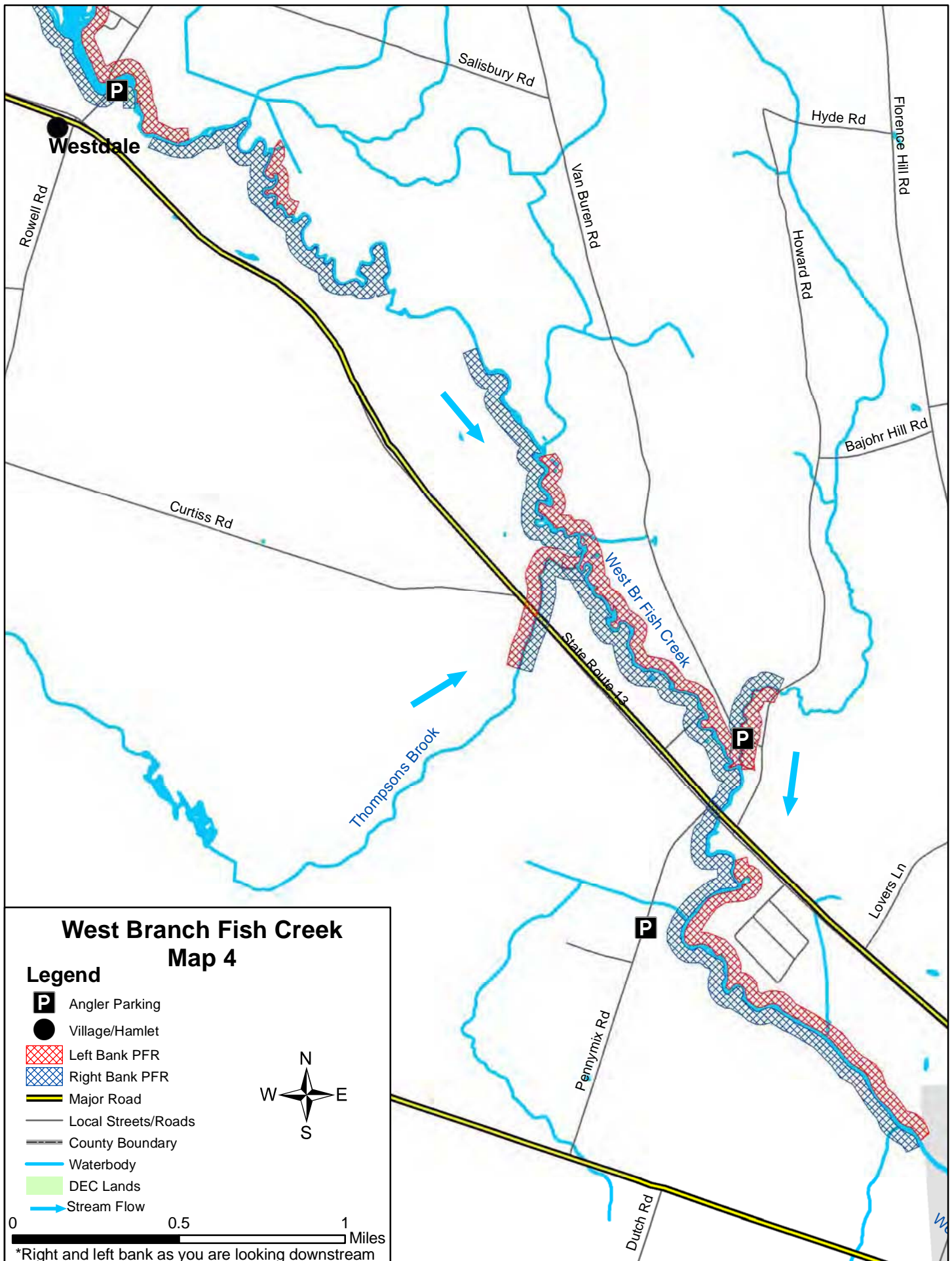
- Angler Parking
- Village/Hamlet
- Left Bank PFR
- Right Bank PFR
- Major Road
- Local Streets/Roads
- County Boundary
- Waterbody
- DEC Lands
- Stream Flow

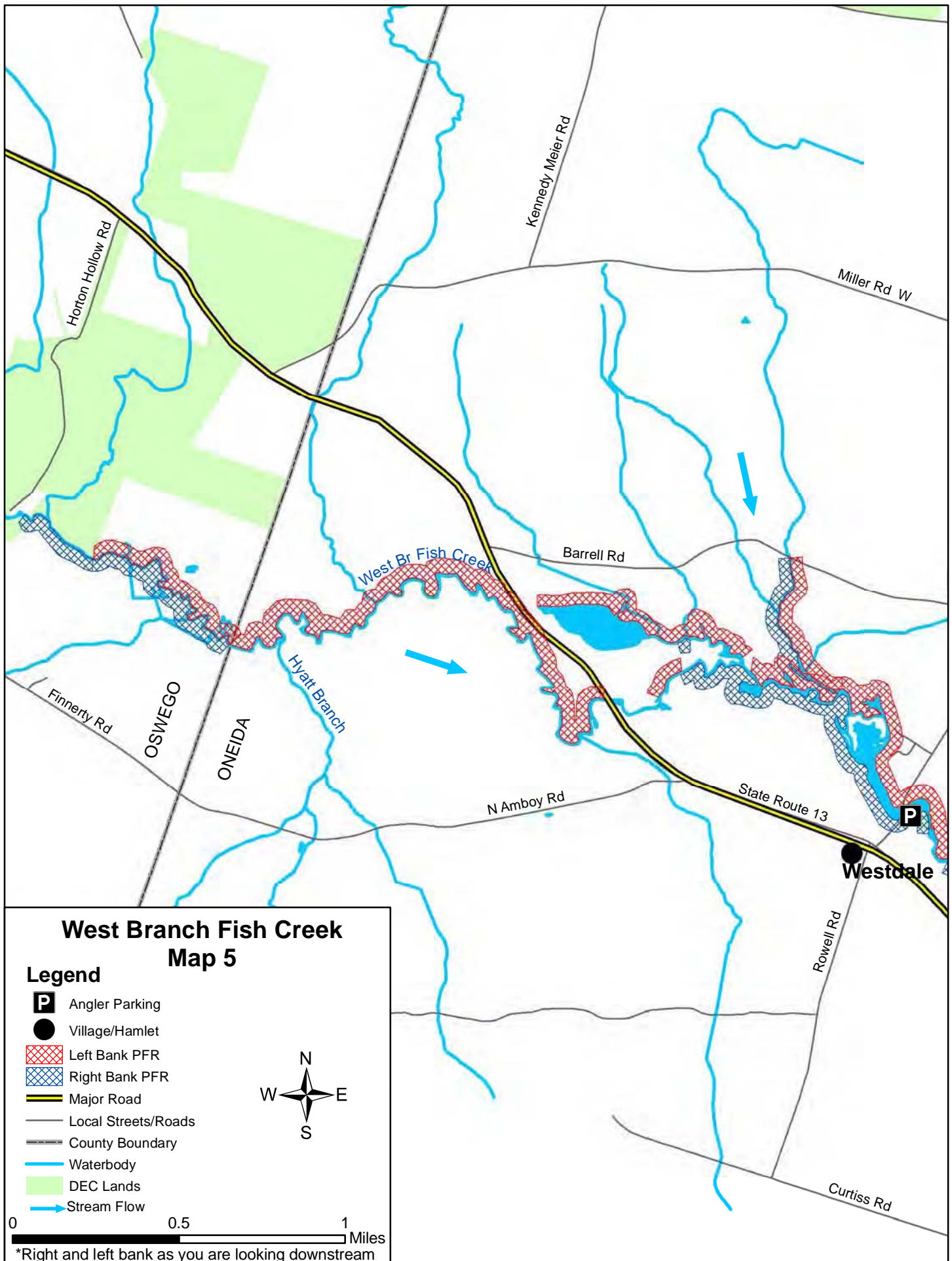


0 0.5 1 Miles

*Right and left bank as you are looking downstream








West Branch Fish Creek
Public Fishing Rights Areas
Map 6

Legend

-  Angler Parking
-  Left Bank PFR
-  Right Bank PFR
-  Footpath
-  Major Road
-  Local Streets
-  Railroad Lines
-  Streams and Ponds
-  DEC Lands
-  Town, Village, City
-  County Boundary
-  Stream Flow



0 0.5 1 Miles

*Right and Left Bank as you are looking downstream

Special Regulation:
West Branch Fish Creek
Trout-April 1- Oct 15, Any size,
5-with no more than 2 longer than 12".

