

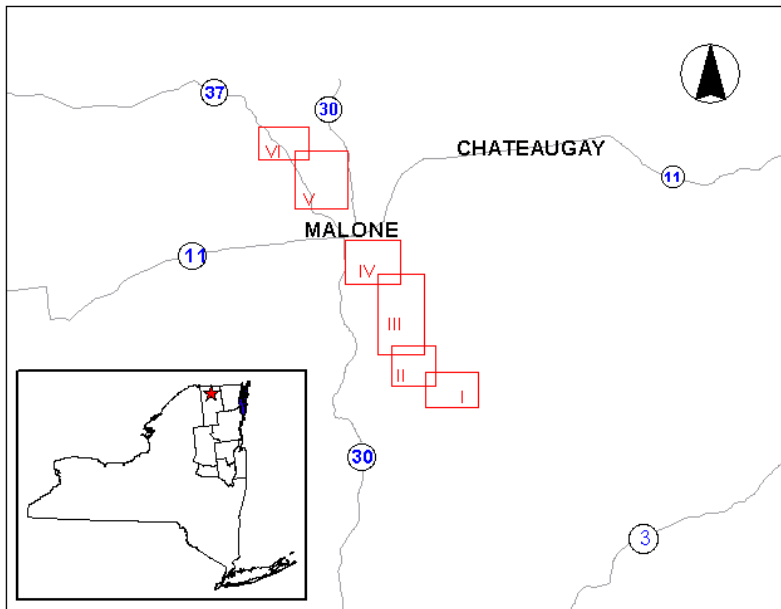
New York State Department of

**ENVIRONMENTAL CONSERVATION**

www.dec.ny.gov

**Public Fishing Rights Maps**

**Salmon River (Franklin County)**



- Section I - Mountain View to Oxbow
- Section II - Oxbow to Chasm Falls
- Section III - Chasm Falls to Whippleville
- Section IV - Whippleville to Malone
- Section V - Lamica Lake to Island
- Section VI - Island to Westville Center

**Fish Species Present**

Brown Trout



Rainbow Trout



Note: Brown and rainbow trout are stocked.

**About Public Fishing Rights**

Public Fishing Rights (PFR's) are permanent easements purchased by the NYSDEC from willing landowners, giving anglers the right to fish and walk along the bank (usually a 33' strip on one or both banks of the stream). This right is for the purpose of fishing only and no other purpose. Treat the land with respect to insure the continuation of this right and privilege. Fishing privileges may be available on some other private lands with permission of the land owner. Courtesy toward the land-owner and respect for their property will insure their continued use.

These generalized location maps are intended to aid anglers in finding PFR segments and are not survey quality. Width of displayed PFR may be wider than reality to make it more visible on the maps. Please look for this PFR sign to ensure that you are in the right location and have legal access to the stream bank.



For more information on this creek or if you believe PFR marked areas on these maps are incorrect or missing PFR signs, please call the Region 5 Fisheries office: (518) 897-1333.

# Salmon River (Franklin County) Mountain View to Oxbow



## PFR Locations



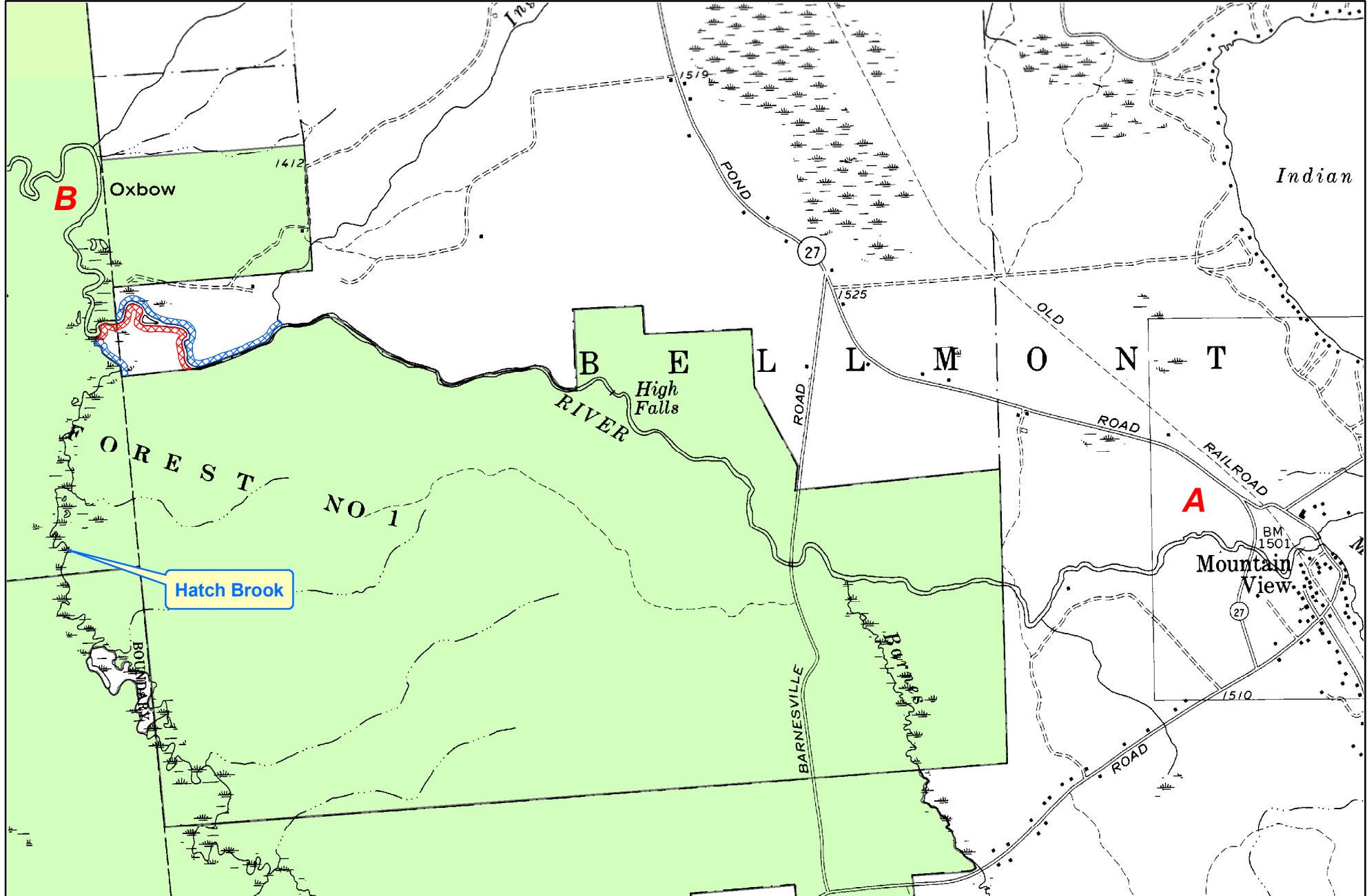
Left Bank



Right Bank

State Land

- Fishing Permitted



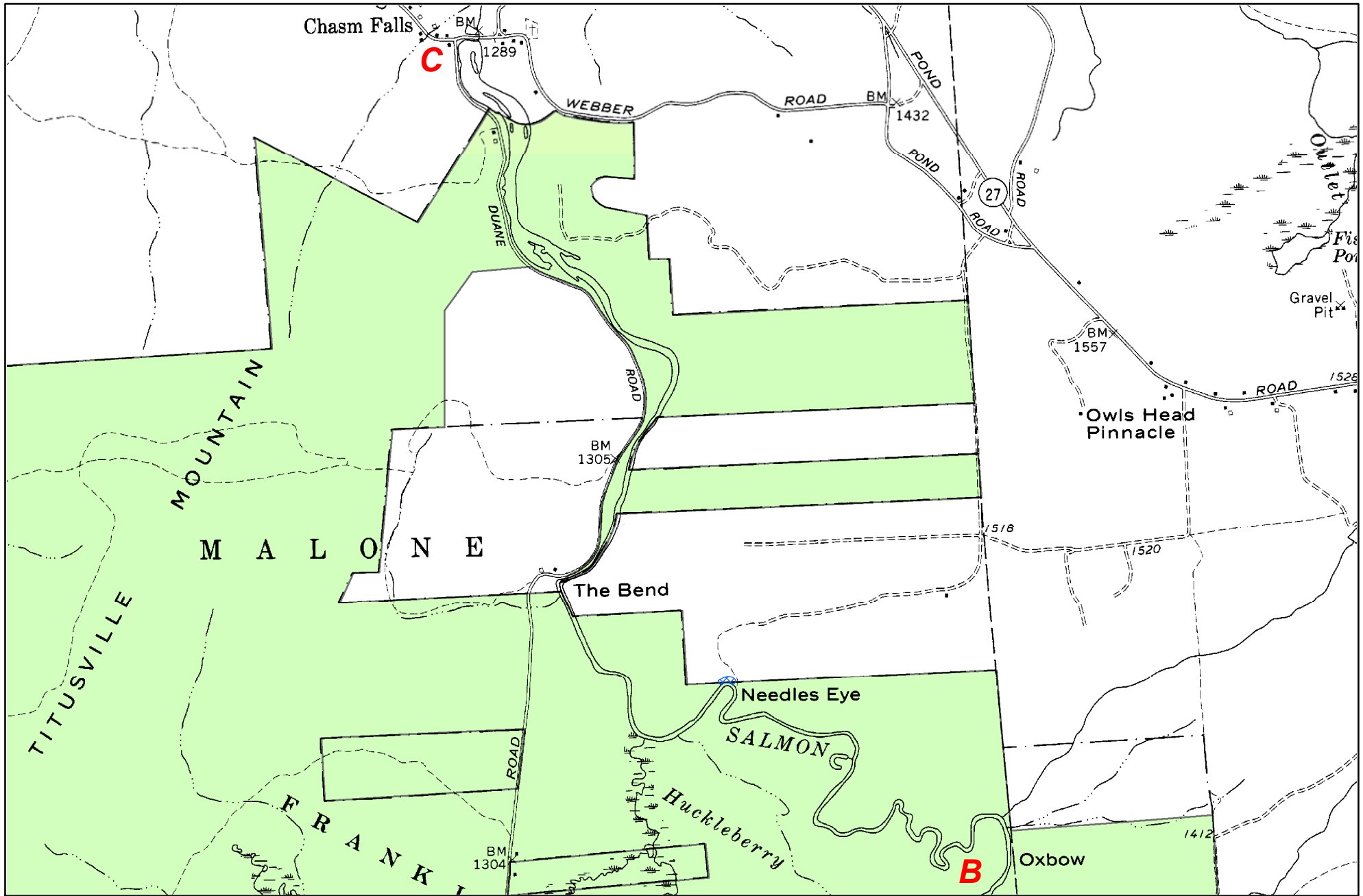
# Salmon River (Franklin County) Oxbow to Chasm Falls



## PFR Locations

 Right Bank

 State Land  
- Fishing Permitted

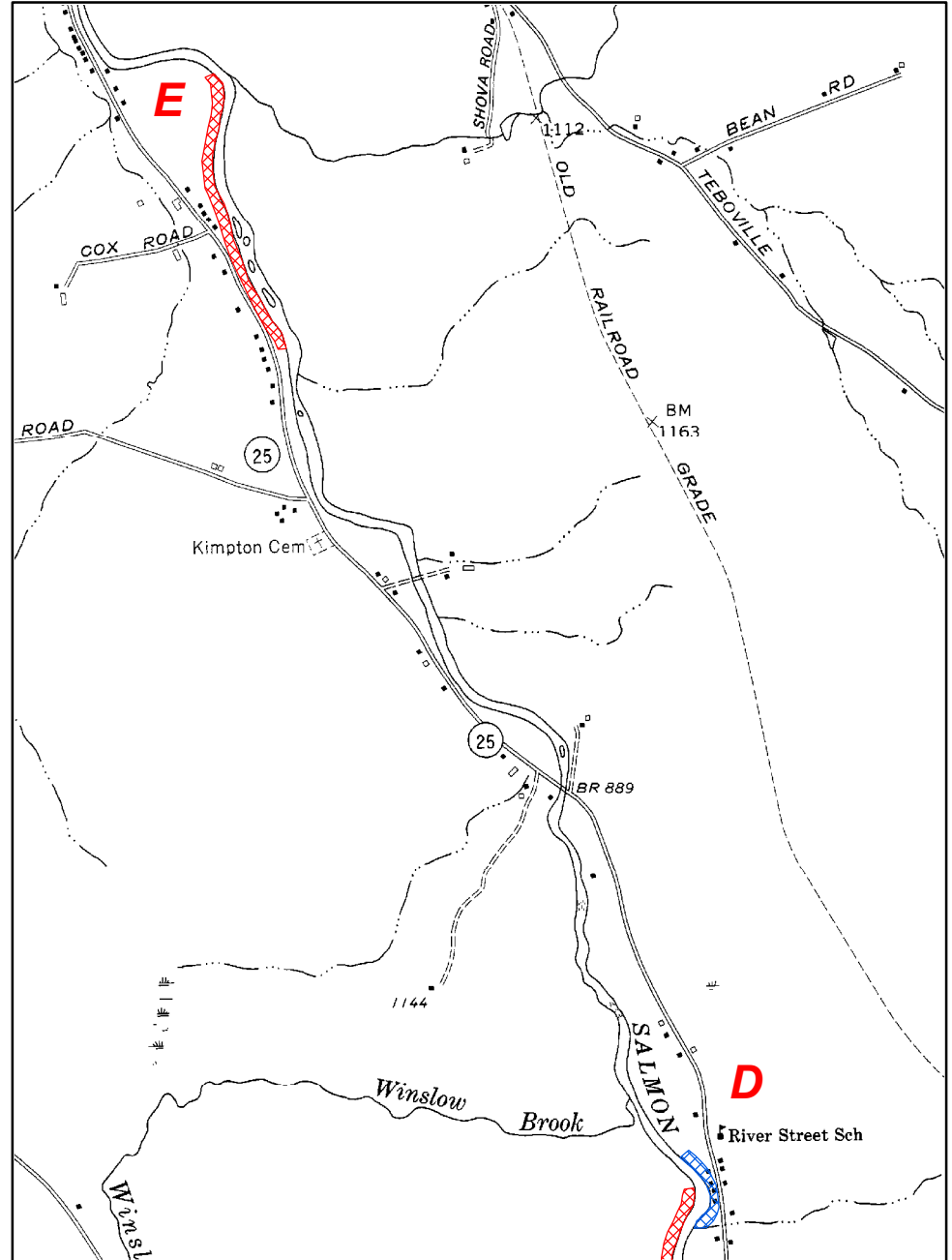
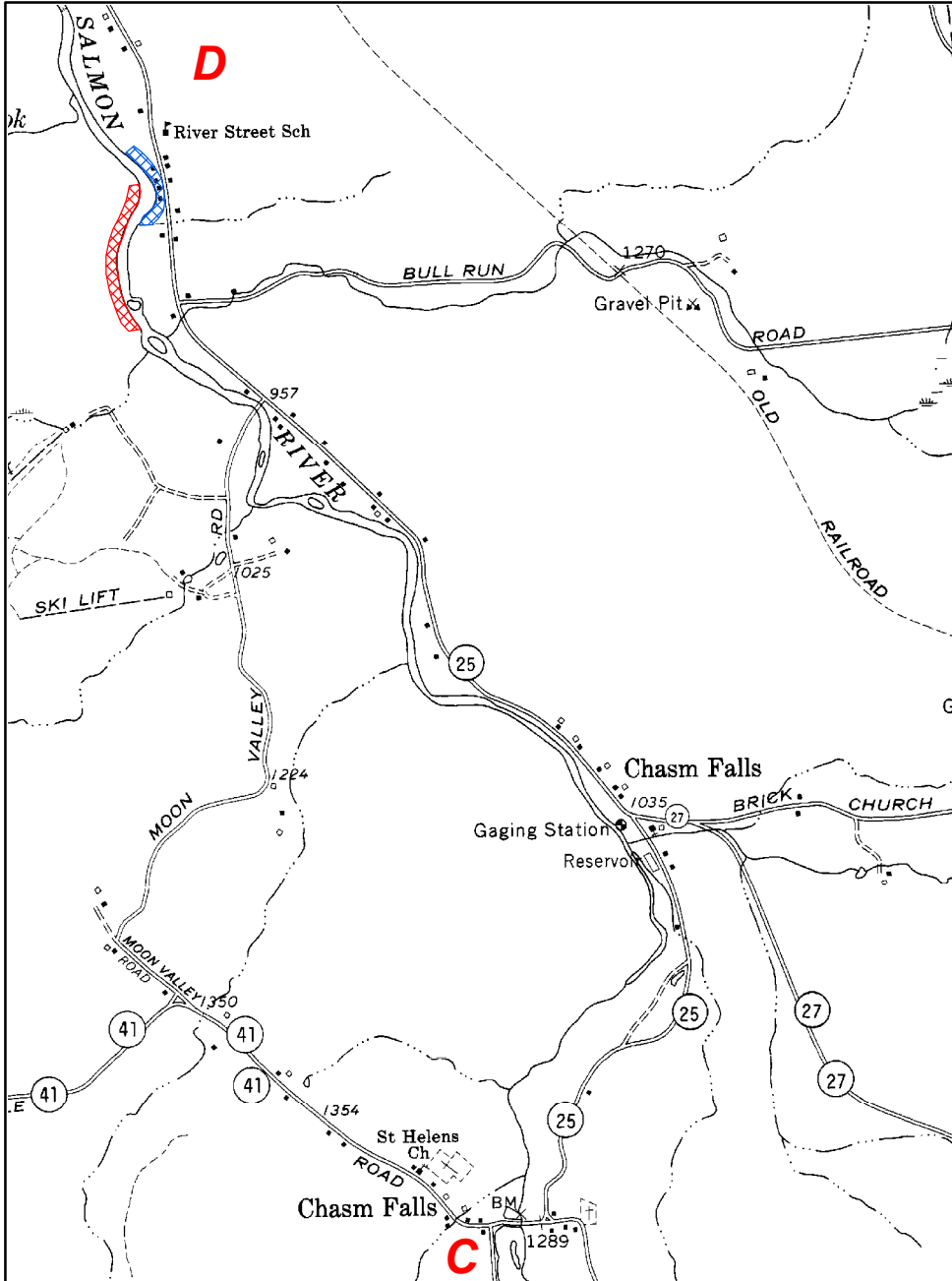


# Salmon River (Franklin County) Chasm Falls to Whippleville





## PFR Locations

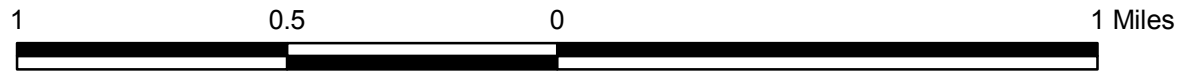
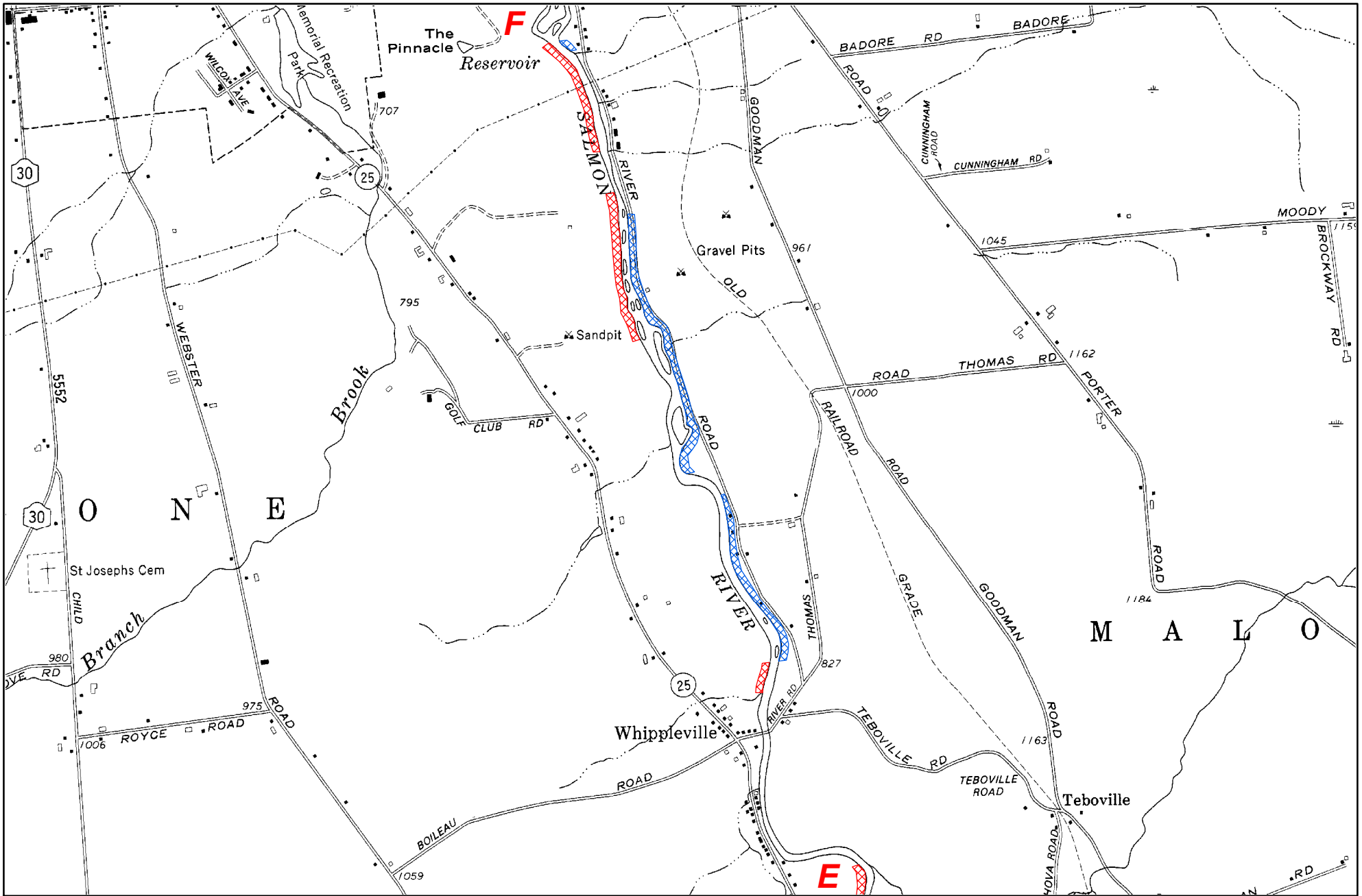
-  Left Bank
-  Right Bank



# Salmon River (Franklin County) Whippleville to Malone



- PFR Locations**
-  Left Bank
  -  Right Bank



# Salmon River (Franklin County) Lamica Lake to Island

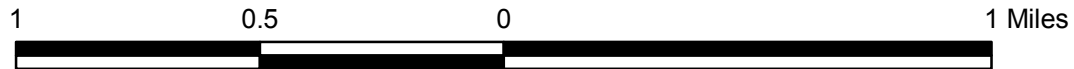
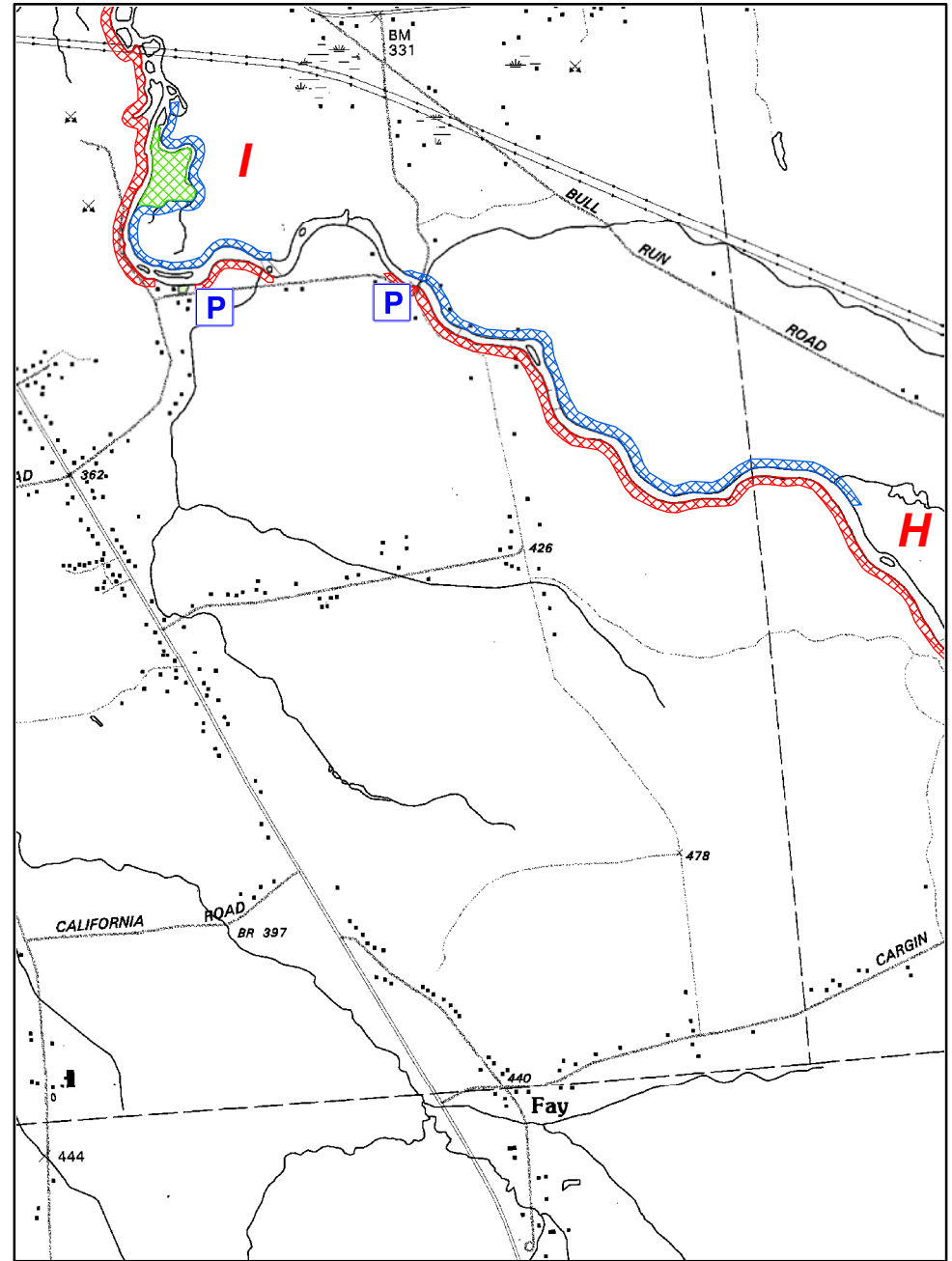
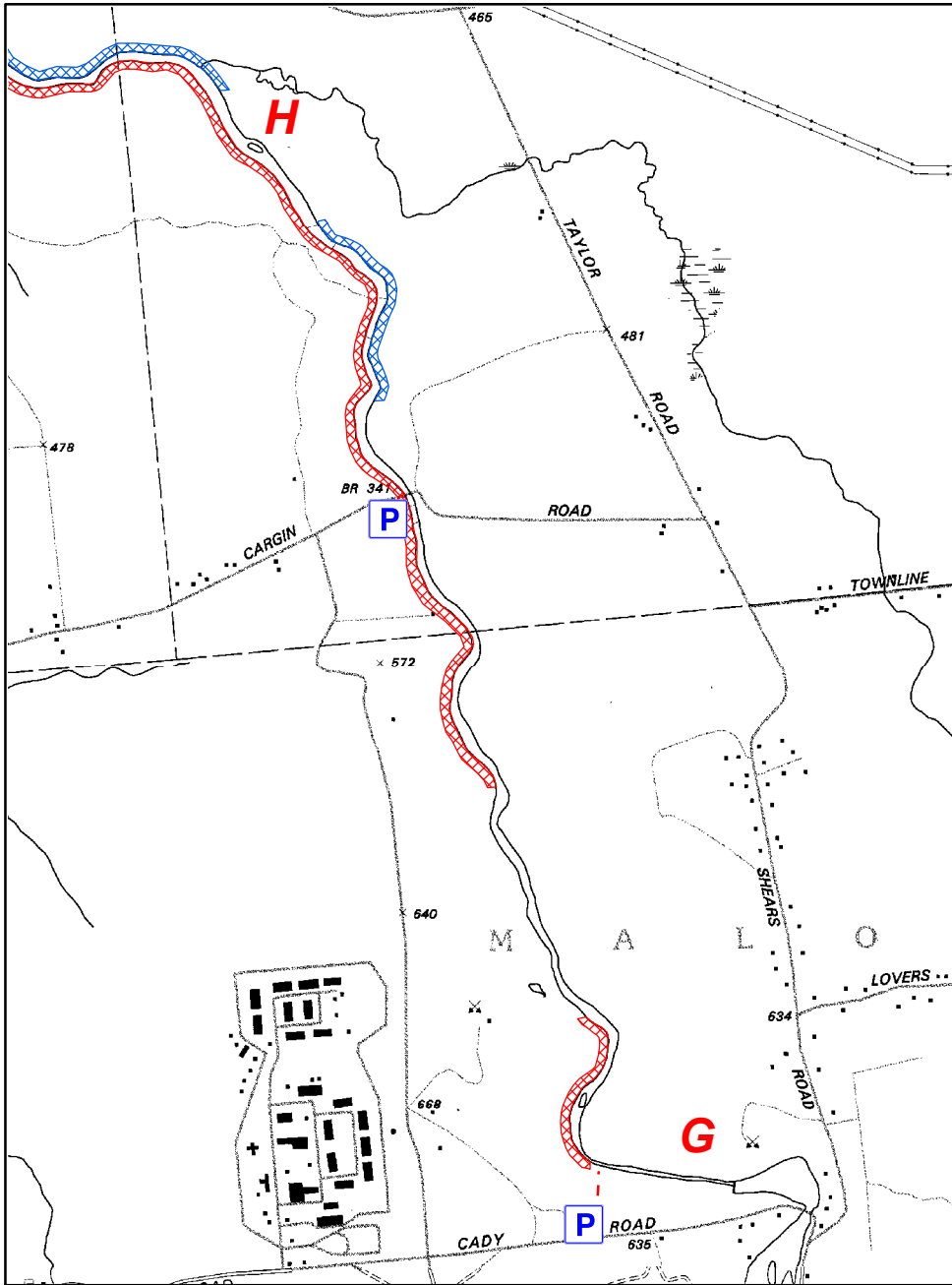


## PFR Locations

-  Left Bank
-  Right Bank
-  Island

 Foot Trail

 Parking Area





# Salmon River (Franklin County) Island to Westville Center



## PFR Locations

-  Left Bank
-  Right Bank
-  Island

 Parking Area

