



New York State Department of

ENVIRONMENTAL CONSERVATION

www.dec.ny.gov

Public Fishing Rights Maps

Lower Genesee River

Description of Fishery

The lower portion of the Genesee River offers some of the most exciting fishing in New York State. Each year the New York State Department of Environmental Conservation (NYSDEC) stocks over 155,000 chinook salmon, 22,100 rainbow trout (steelhead) and 22,000 coho salmon into Lake Ontario near the mouth of the Genesee River. Downstream of the lower falls near the Driving Park Avenue bridge, the fish population changes seasonally to reflect that of Lake Ontario, including species such as brown trout, rainbow trout (steelhead), coho salmon and chinook salmon. Lake Ontario tributary regulations apply. Please consult the New York Freshwater Fishing Regulations Guide.

Fish Species Present

Brown Trout



Rainbow Trout



Chinook Salmon



Coho Salmon

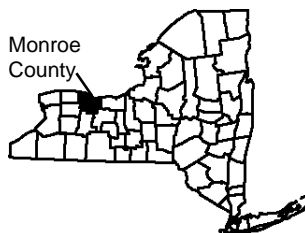


Directions to the Seth Green – Lower Falls Public Fishing Area on the Genesee River:

If you are heading east on Rt 104: Exit at the St. Paul Street Exit and turn left (south) on St. Paul Street. Proceed .5 miles and turn right onto Seth Green Drive. Proceed about 150 feet and you will find a parking area on the right.

If you are heading west on Rt 104: Exit at the Seneca Avenue Exit and turn left (south) on Seneca Avenue. Proceed .5 miles and turn right onto Norton Street. Go 1 mile and Norton Street changes to Seth Green Drive at the intersection of St. Paul Street. Go about 150 feet past this intersection and you will find a parking area on the left.

Location



About Public Fishing Rights

Public Fishing Rights (PFR's) are permanent easements purchased by the NYSDEC from willing landowners, giving anglers the right to fish and walk along the bank (usually a 33' strip on one or both banks of the stream). This right is for the purpose of fishing only and no other purpose. Treat the land with respect to insure the continuation of this right and privilege. Fishing privileges may be available on some other private lands with permission of the land owner. Courtesy toward the land-owner and respect for their property will insure their continued use.

These generalized location maps are intended to aid anglers in finding PFR segments and are not survey quality. Width of displayed PFR may be wider than reality to make it more visible on the maps. Please look for this PFR sign to ensure that you are in the right location and have legal access to the stream bank.

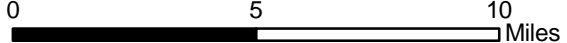


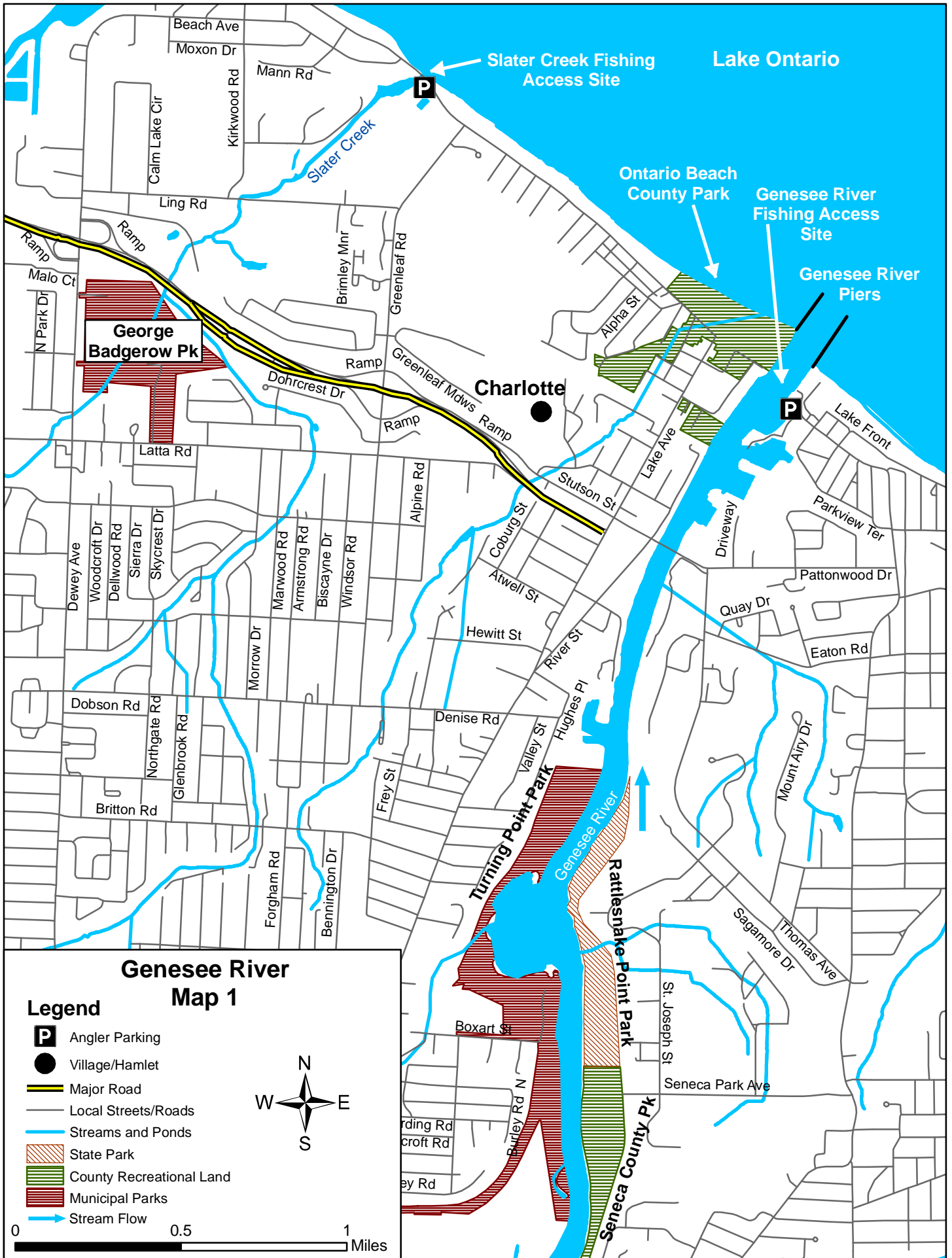
For more information on this creek or if you believe PFR marked areas on these maps are incorrect or missing PFR signs, please call the Region 8 Fisheries office: (585) 226-2466.

Genesee River Fishing Access

Legend

- City/Village
- Major Road
- County Boundary
- Stream
- City

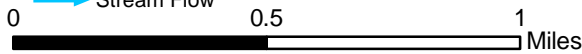




Genesee River Map 1

Legend

- P Angler Parking
- Village/Hamlet
- Major Road
- Local Streets/Roads
- Streams and Ponds
- State Park
- County Recreational Land
- Municipal Parks
- Stream Flow



Genesee River Map 2

Legend

- P** Angler Parking
- Village/Hamlet
- Major Road
- Local Streets/Roads
- Streams and Ponds
- State Park
- County Recreational Land
- Municipal Parks
- Stream Flow

