

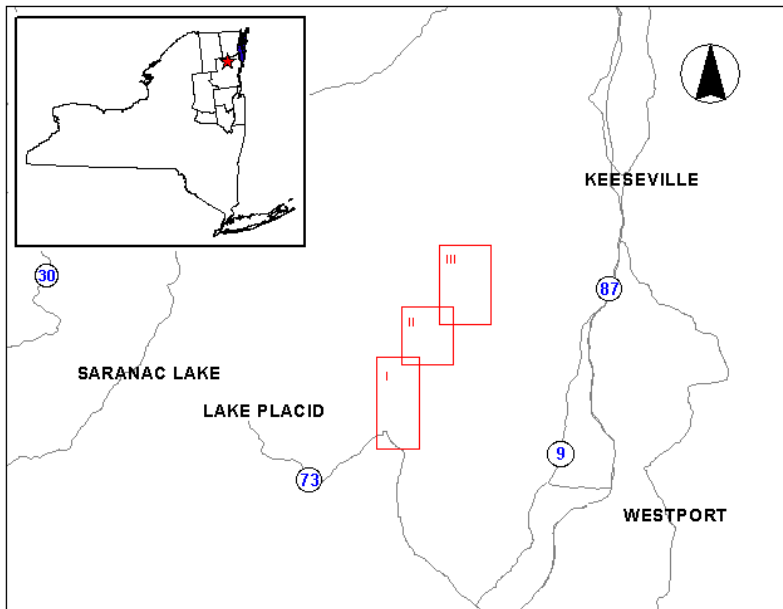
New York State Department of

ENVIRONMENTAL CONSERVATION

www.dec.ny.gov

Public Fishing Rights Maps

East Branch Ausable River



Section I - Keene to Upper Jay
Section II - Upper Jay to Jay
Section III - Jay to Ausable Forks

Fish Species Present

Brown Trout



Brook Trout



Rainbow Trout



Note: Brown, brook and rainbow trout are stocked.

About Public Fishing Rights

Public Fishing Rights (PFR's) are permanent easements purchased by the NYSDEC from willing landowners, giving anglers the right to fish and walk along the bank (usually a 33' strip on one or both banks of the stream). This right is for the purpose of fishing only and no other purpose. Treat the land with respect to insure the continuation of this right and privilege. Fishing privileges may be available on some other private lands with permission of the land owner. Courtesy toward the land-owner and respect for their property will insure their continued use.

These generalized location maps are intended to aid anglers in finding PFR segments and are not survey quality. Width of displayed PFR may be wider than reality to make it more visible on the maps. Please look for this PFR sign to ensure that you are in the right location and have legal access to the stream bank.





For more information on this creek or if you believe PFR marked areas on these maps are incorrect or missing PFR signs, please call the Region 5 Fisheries office: (518) 897-1333.

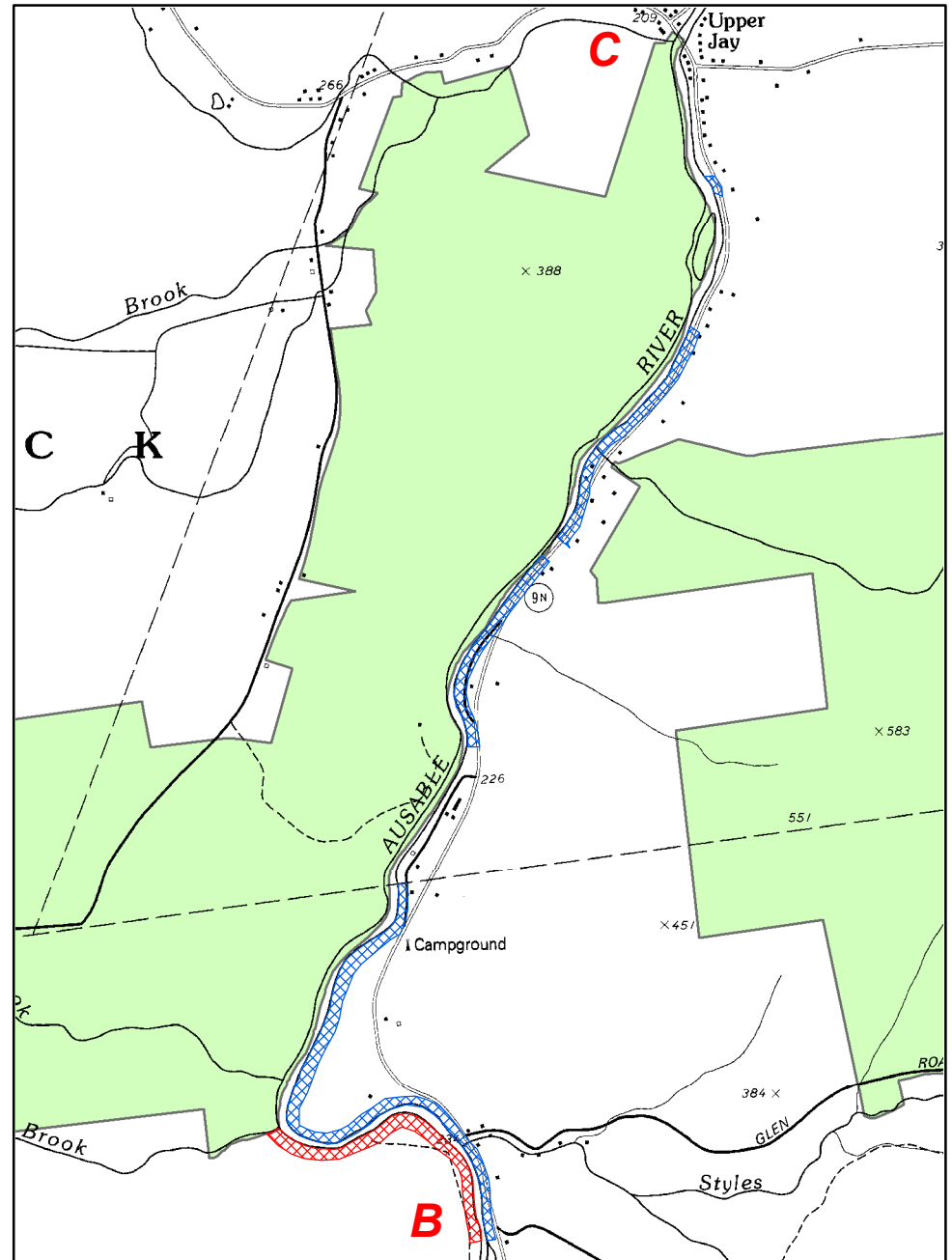
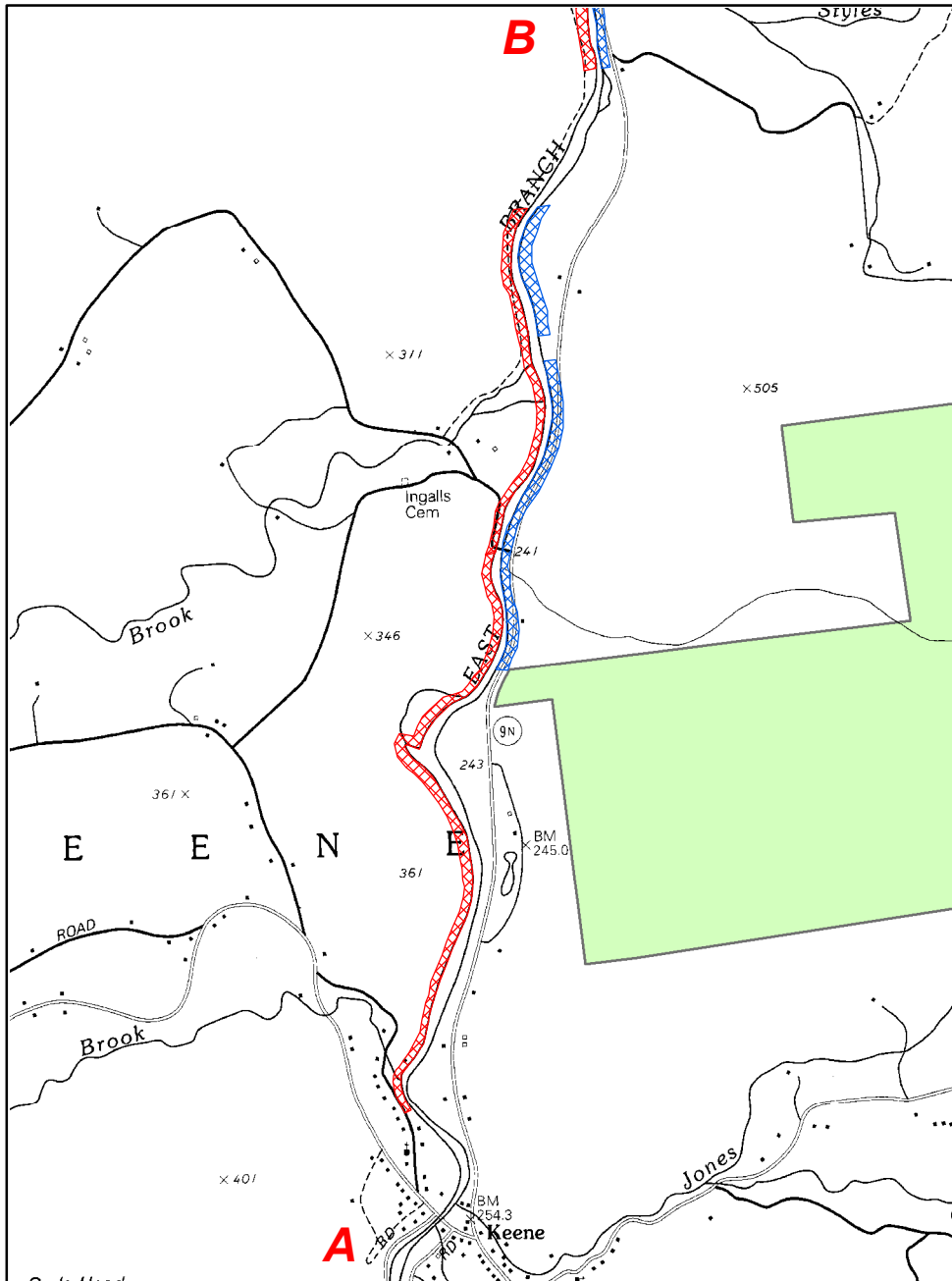
East Branch Ausable River Keene to Upper Jay



PFR Locations

-  Left Bank
-  Right Bank

-  State Land
- Fishing Permitted



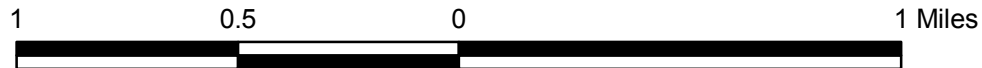
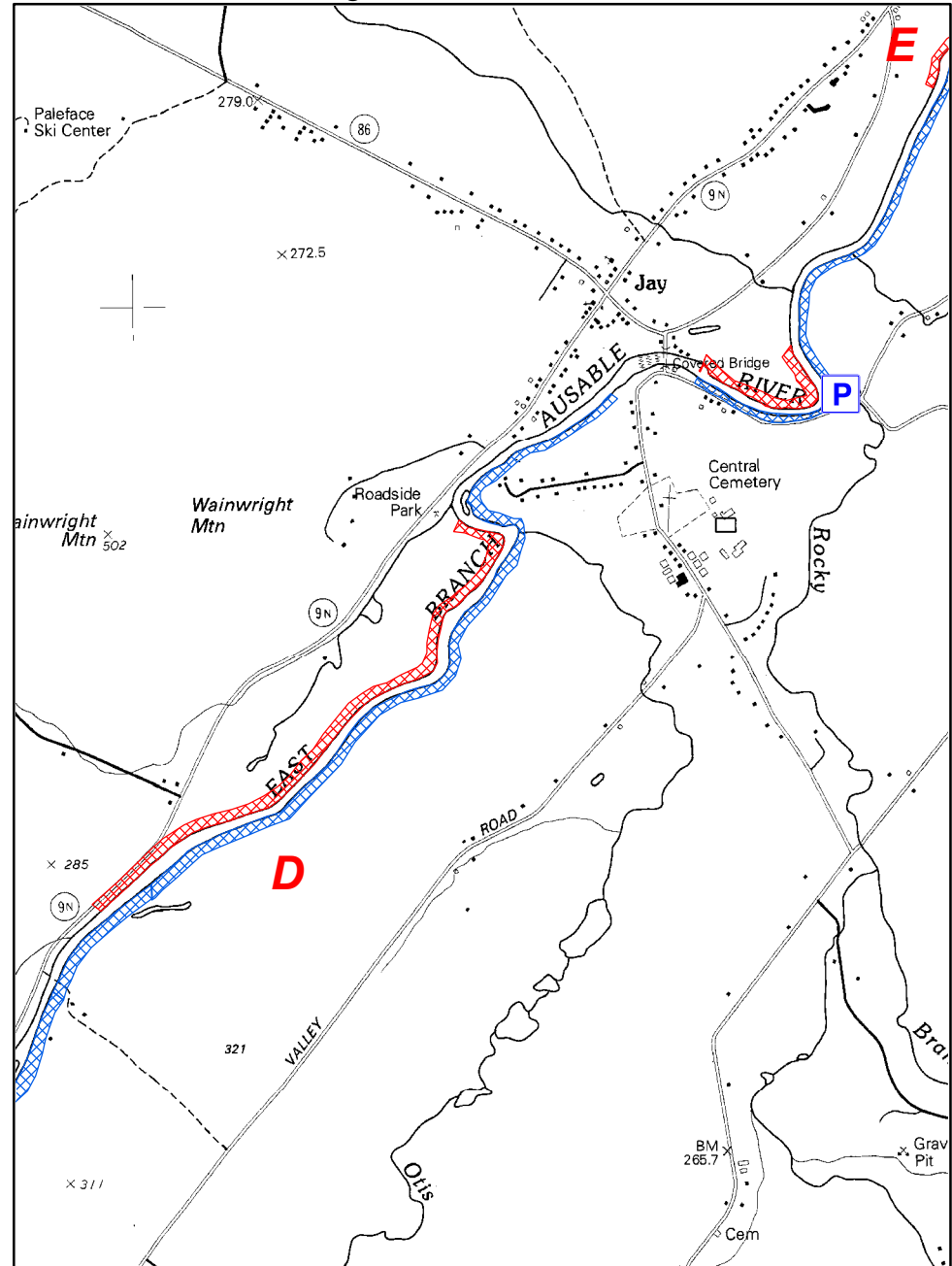
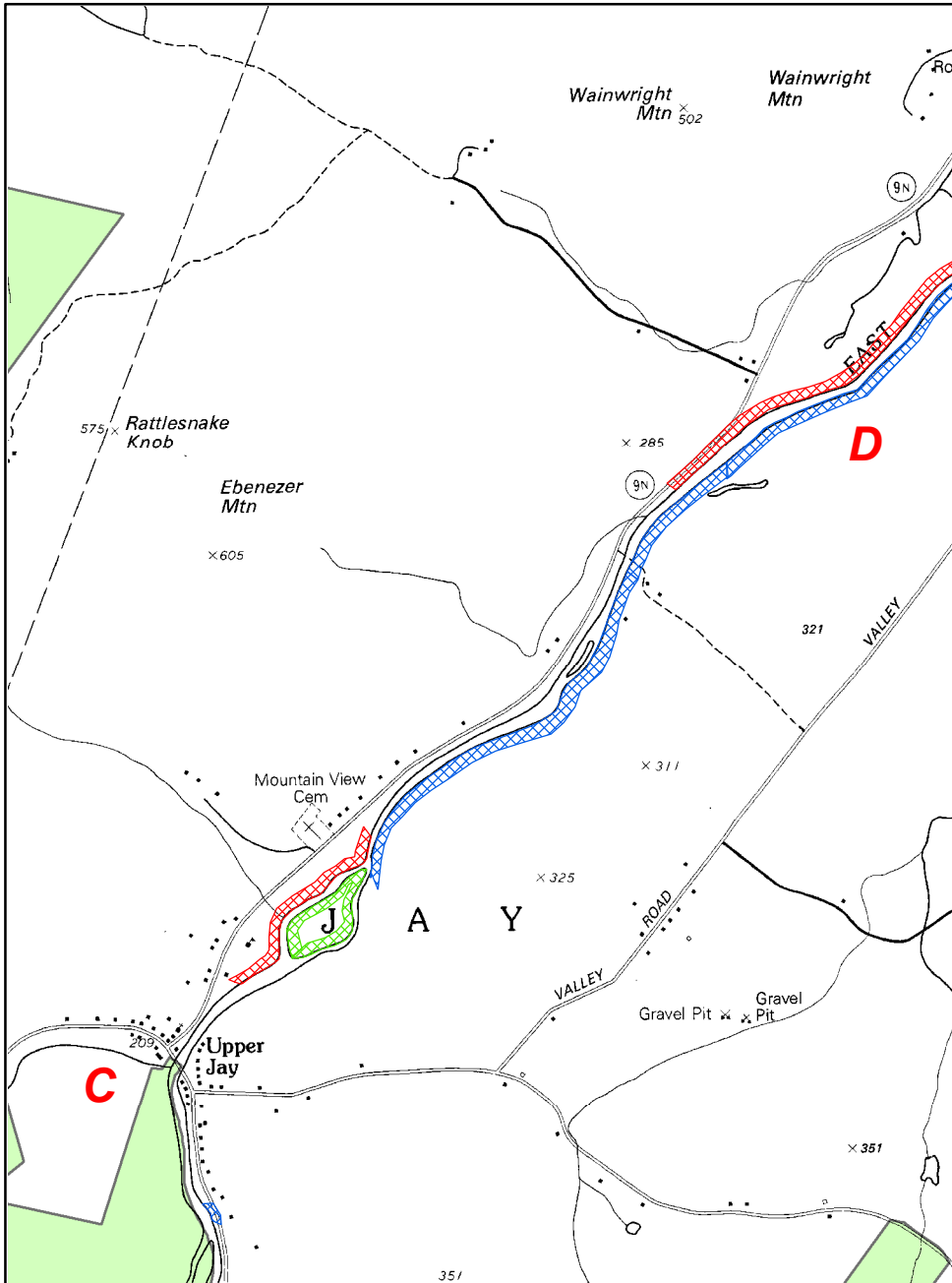
East Branch Ausable River Upper Jay to Jay



PFR Locations

-  Island
-  Left Bank
-  Right Bank

-  State Land - Fishing Permitted
-  Parking Area



East Branch Ausable River Jay to Ausable Forks



PFR Locations

 Left Bank

 Right Bank

 Parking Area

