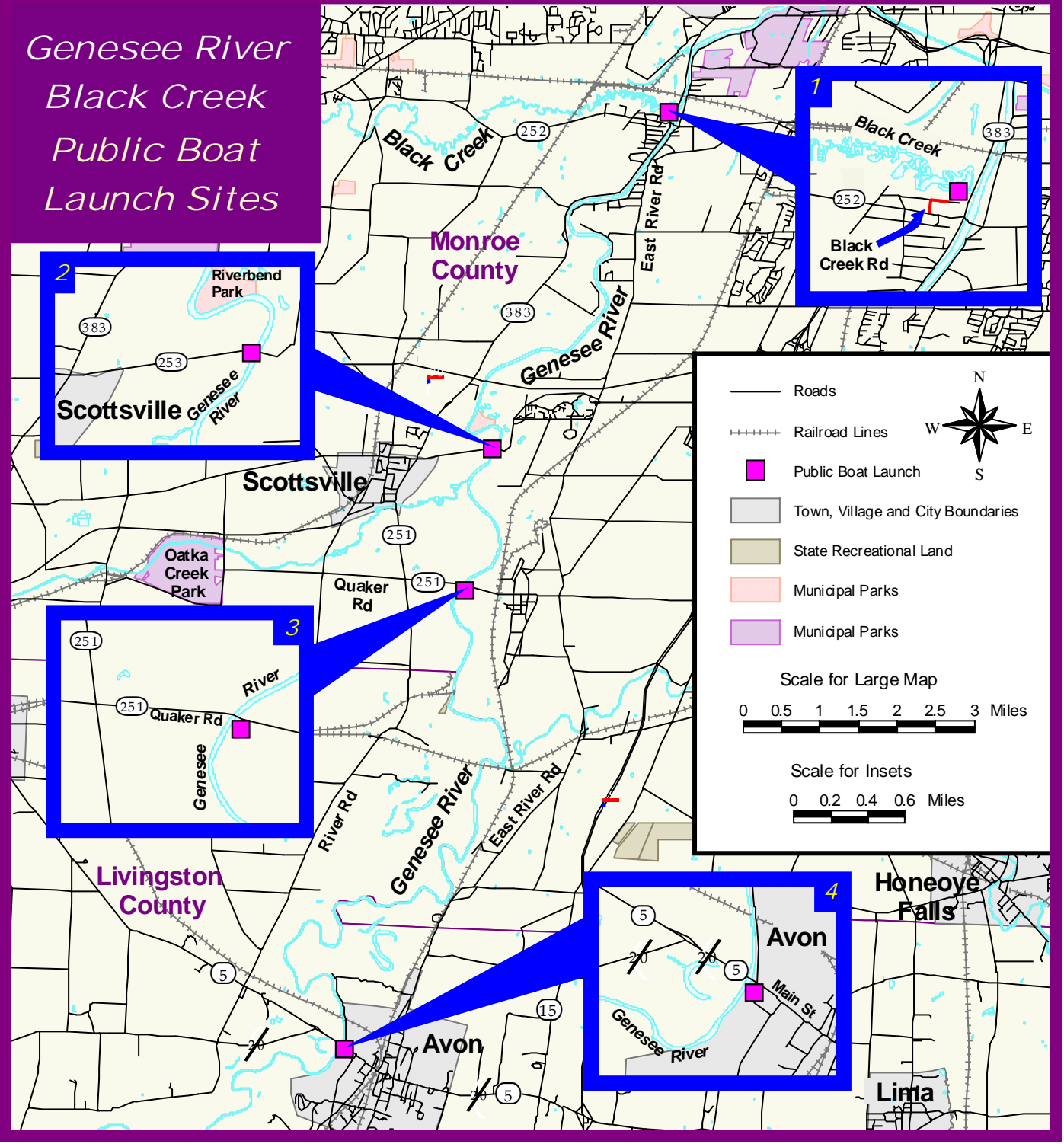


*Genesee River
Black Creek
Public Boat
Launch Sites*



Boat Launch Sites

*Boat launch sites operated by the DEC are FREE to the public, however; boat launch sites operated by other agencies may charge a fee.

Black Creek

- 1 - Black Creek Site - On Black Creek Road, off Route 252, ¼ mile west of Route 383. Concrete ramp. Parking for 10 cars and trailers. Operated by the DEC.

Genesee River

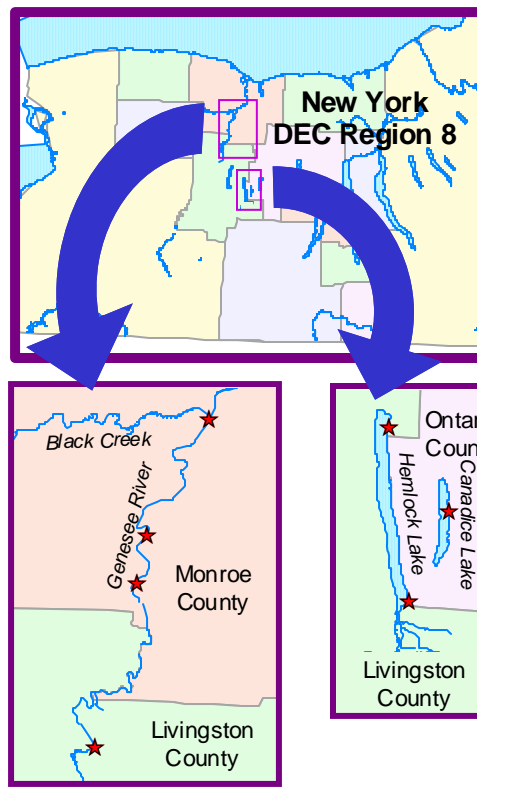
- 2 - Brown's Bridge Site - On County Route 253, 2 miles east of the Hamlet of Scottsville. Car top boat ramp. Parking for 12 cars. Operated by the DEC.
- 3 - Quaker Road Site - On Route 251 (Quaker Road), 2 miles southeast of the Hamlet of Scottsville. Car top boat ramp. Parking for 7 cars. Operated by the DEC.
- 4 - Avon Site - On Routes 5 & 20 in the Town of Avon. Car top boat ramp. Parking for 13 cars. Operated by the DEC.

Genesee River & Black Creek

The upper portion of the Genesee River flows through Livingston County into Monroe County. Black Creek, a tributary of the Genesee River flows from Genesee County into Monroe County. Black Creek and the upper portion of the Genesee River provide anglers with diverse warmwater fishing opportunities. Species present include walleye, northern pike, largemouth bass, smallmouth bass, and panfish such as bullhead, pumpkinseed, bluegill and rock bass.

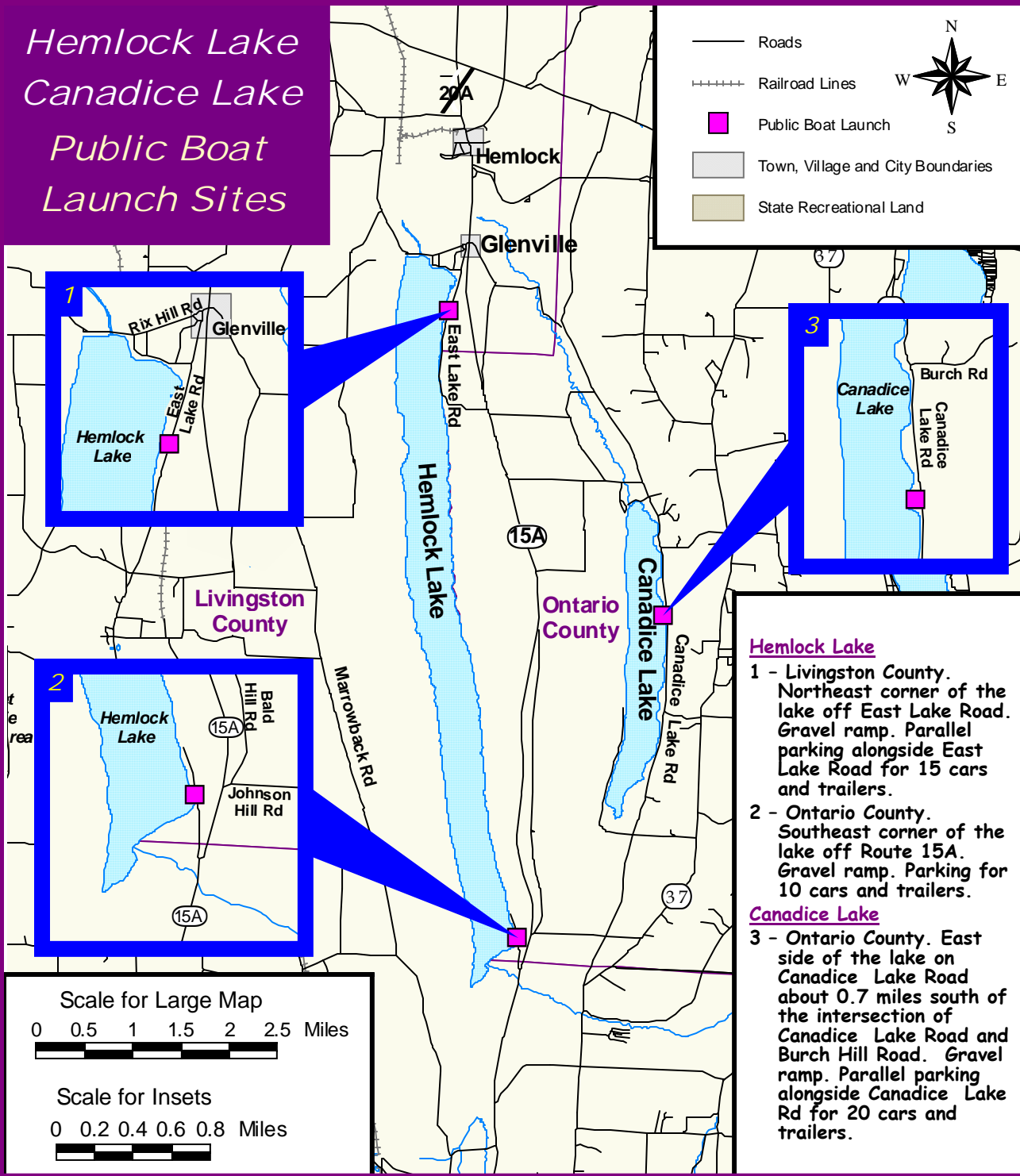


Public Boat Launches
Hemlock Lake
Canadice Lake
Genesee River
Black Creek



New York State
Department of Environmental
Conservation
www.dec.ny.gov

Hemlock Lake Canadice Lake Public Boat Launch Sites



***Boat launch sites operated by the DEC are FREE to the public, however; boat launch sites operated by other agencies may charge a fee.**

Hemlock Lake

Located in southeast Livingston County, Hemlock Lake lies 25 miles south of Rochester. Hemlock Lake is 1799 acres in size and one of two Finger Lakes whose shorelines are virtually undeveloped.

Canadice Lake

Located in southwest Ontario County, Canadice Lake lies 30 miles south of Rochester in southwest Ontario County. The smallest Finger Lake, Canadice Lake is 650 acres in size and one of two Finger Lakes whose shorelines are virtually undeveloped.

Fish Management

Lake trout historically provided the most significant sportfishery on Hemlock Lake. In 1957, the DEC conducted the first biological survey of Hemlock Lake. DEC records show that stocking of lake trout, landlocked salmon and cisco (lake herring) into Hemlock Lake began prior to the turn of the century. Later stocking efforts included rainbow trout, brown trout, smelt, walleye and lake whitefish.

Currently, Hemlock's salmonid fishery consists of lake trout, brown trout, rainbow trout and landlocked salmon. All of these fish may be taken year-round - check your **Freshwater Fishing Regulations Guide - Statewide Angling Regulations and Finger Lakes Regulations Sections** for size and bag limits.

Good populations of smelt and alewives provide excellent trout and salmon growth. Annual stocking by DEC sustains the lake trout, brown trout, rainbow trout and landlocked salmon. The rainbow trout fishery is also supported by natural reproduction from Springwater Creek.

Hemlock's warmwater sportfishery includes smallmouth bass, largemouth bass and chain pickerel. The later are noted for their large size. Significant opportunities are also available for panfish including bullhead (especially in the spring), yellow perch, rock bass, bluegill and pumpkinseed.

Fish Management

Fisheries surveys begun in the 1950's revealed a good lake trout population. Records show that lake trout were stocked into Canadice Lake as early as 1942. To diversify the fishery, brown trout and rainbow trout were later added. Stocking of all three continues to the present along with occasional stockings of surplus landlocked salmon.

Trout and salmon may be taken year-round at Canadice. Check your **Freshwater Fishing Regulations Guide - Statewide Angling Regulations and Finger Lakes Regulations Sections** for size and bag limits. Smelt and alewives provide the primary salmonid forage with some contribution from yellow perch and minnows.

Although Canadice Lake is best suited for salmonids and smallmouth bass, it also provides significant fishing opportunities for largemouth bass and chain pickerel in its limited shallow water habitat. Panfish, including rock bass, yellow perch, bluegills, pumpkinseeds, and bullheads, are also important contributors to the fishery.

Hemlock Lake

- 1 - Livingston County. Northeast corner of the lake off East Lake Road. Gravel ramp. Parallel parking alongside East Lake Road for 15 cars and trailers.
- 2 - Ontario County. Southeast corner of the lake off Route 15A. Gravel ramp. Parking for 10 cars and trailers.

Canadice Lake

- 3 - Ontario County. East side of the lake on Canadice Lake Road about 0.7 miles south of the intersection of Canadice Lake Road and Burch Hill Road. Gravel ramp. Parallel parking alongside Canadice Lake Rd for 20 cars and trailers.