



Department of
Environmental
Conservation

Technical Conference

Oil and Gas Emissions Accounting

This webinar will start shortly.

NYSDEC Office of Climate Change
10:00am 3/26/21

Public Outreach Events

Annual NYS GHG Emissions Report Overview

- 3/22/2021 3:00pm

Oil and Gas Accounting Technical Conference

- 3/26/2021 10:00am-1:00pm

Net Accounting

- 3/29/2021 3:00pm



Department of
Environmental
Conservation

Opening, Office of Climate Change

Background on Oil and Gas Accounting, Division of Air Resources

- Measurement-based approaches to quantify oil and gas methane emissions.
David Lyons, Environmental Defense Fund
- NYSERDA Oil and Natural Gas Sector Methane Emissions Inventory
Jonathan Dorn, Abt Associates
- Upstream Fuel Cycle Emission Approaches and Sensitivities: Methodologies and Results
Danny Hage, Ben Young, Sarah Cashman, Eastern Research Group

Open Q&A and Public Input Session

Office of Climate Change

Suzanne Hagell

The CLCPA requires the DEC to issue a Greenhouse Gas Emission Report

Article 75 of the Environmental Conservation Law

- ECL 75-0101 Definitions
- ECL 75-0103 Climate Action Council
- **ECL 75-0105 Statewide Greenhouse Gas Emission Report**
- ECL 75-0107 Statewide Greenhouse Gas Emission Limits

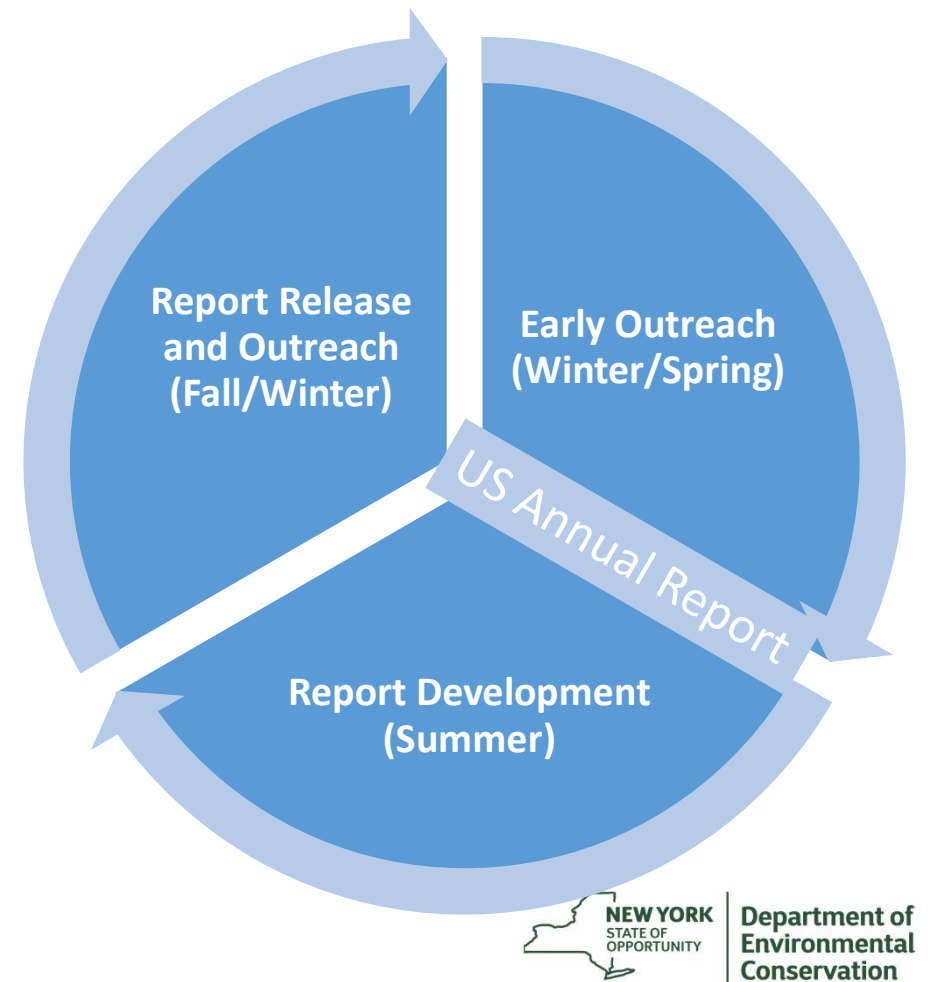
Please also see rulemaking documents for Part 496 for additional background.



Department of
Environmental
Conservation

Annual Report Process

- DEC will be issuing a report on an annual basis following this general schedule.
- DEC is taking input at any time and will be making continual improvements indefinitely.
- Today's public hearing addresses methodology and analysis used in initial report.



Today's Presentation:

- This second outreach event will provide technical discussions regarding the estimation of fugitive emissions:
 - Within New York State.
 - Across the fuel cycle or associated with the extraction and transmission of fossil fuels imported into New York State.



Department of
Environmental
Conservation

CLCPA “Statewide GHG Emission” Scope

Fuel System Example

Within New York

Outside of New York

Combustion



Transmission and Distribution



Extraction and Processing



Governmental GHG Inventory

CLCPA Addition

Not in Scope



Department of
Environmental
Conservation

Division of Air Resources

Ona Papageorgiou, P.E.

Goals & Expectations

- Solicit information on methods used to calculate greenhouse gas emissions from the oil and natural gas sector.
- Emissions calculated with the selected methodologies will be used in the annual GHG Inventory Report and to inform policy decisions.

Years & Timing

- Typical inventory years
- 2-3 year delay



Production

- Drilling and Well Completion
- Producing Wells
- Gathering Lines
- Gathering and Boosting Compressors

Processing

- Gas Processing Plant

Natural Gas Transmission & Storage

- Transmission Compressor Stations
- Transmission Pipeline
- Underground Storage

Distribution

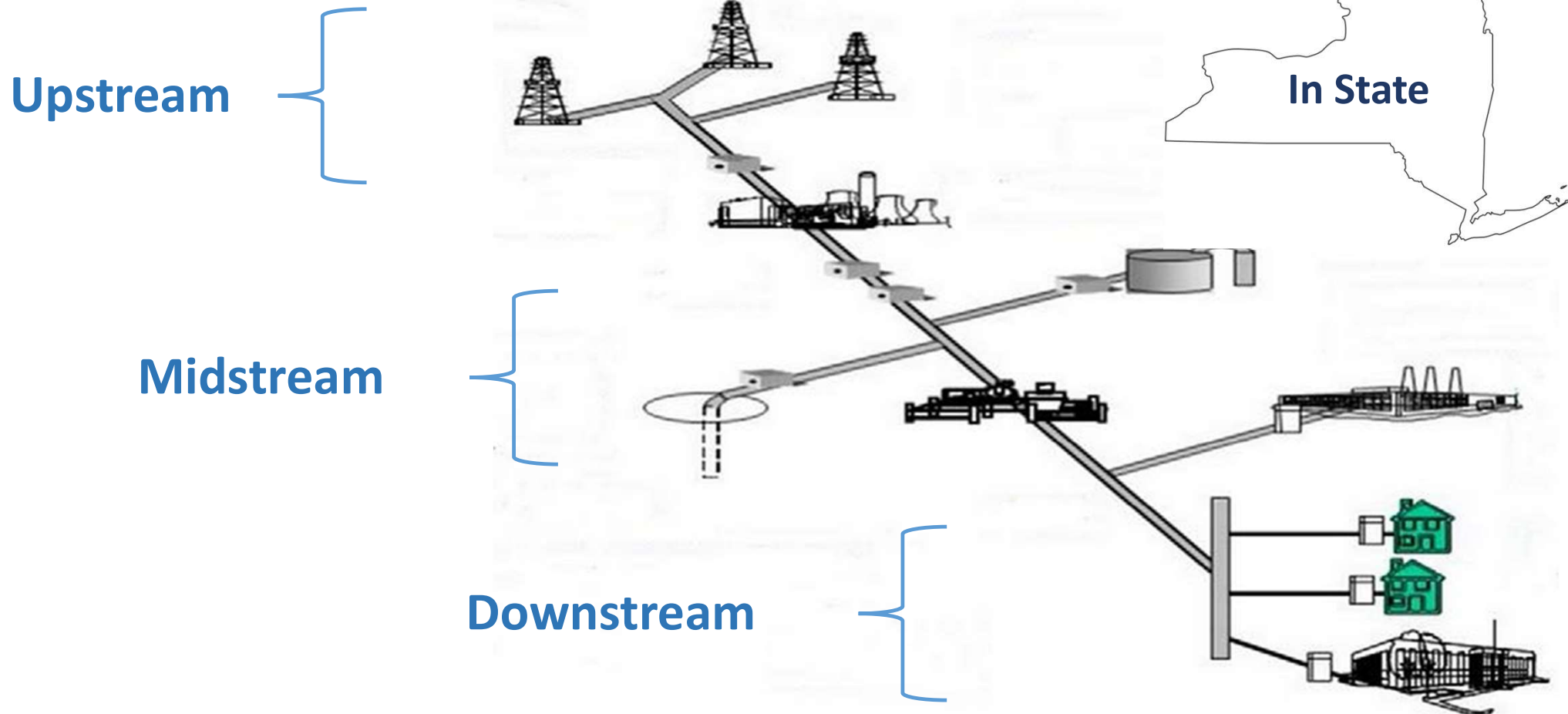
- Distribution Mains
- City Gate
- Customer

(Adapted from American Gas Association and EPA Natural Gas STAR Program)

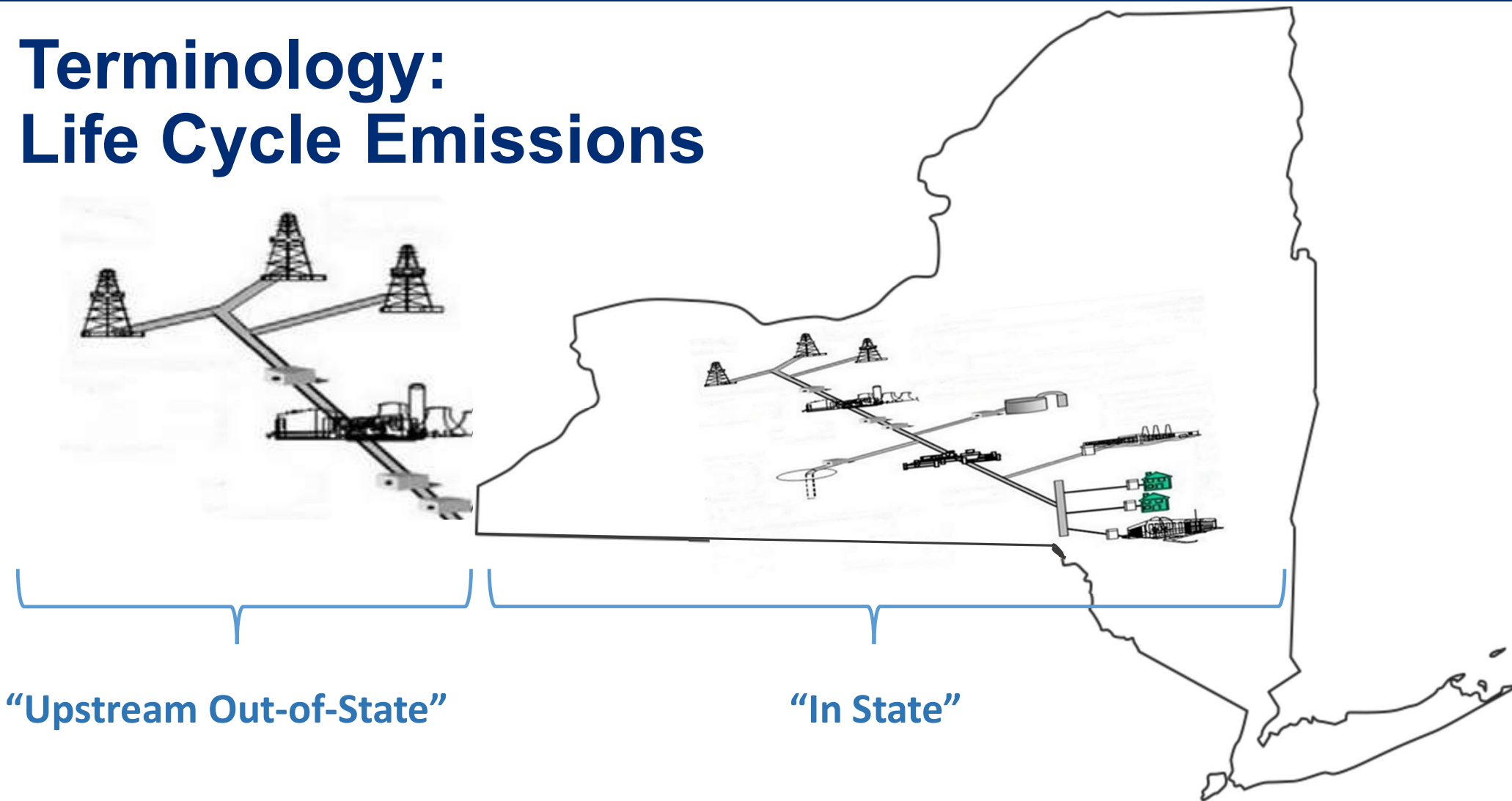


Department of
Environmental
Conservation

Terminology: Up-, Mid-, & Downstream



Terminology: Life Cycle Emissions



Components Covered for Life Cycle Emissions

Fuel System Example

Within New York

Outside of New York

Combustion



Transmission and Distribution



Extraction and Processing



Governmental GHG Inventory

CLCPA Addition

Not in Scope



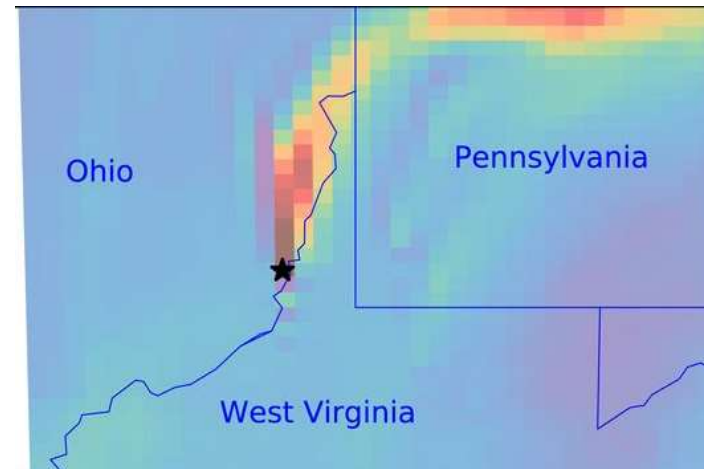
Department of
Environmental
Conservation

Terminology: Bottom-up & Top-down

"Bottom-up" estimates measure emissions from a representative sample of devices.



"Top-down" measurements can be performed at a regional scale using aircraft, satellites, and other tools.



Discussion & Questions



Department of
Environmental
Conservation

Discussion and Questions

Please provide input on:

- Methods, analysis, and data sources
- The annual process for continual improvement

You can send comments anytime to:

climate.regs@dec.ny.gov