



FACT SHEET State Superfund Program

Receive Site Fact Sheets by Email. See "For More Information" to Learn How.

Site Name: FMC Corporation – Roy Hart School
DEC Site #: 932014 Operable Unit 02*
Address: 100 Niagara Street
Middleport, NY 14105

Have questions? See "Who to Contact" Below

DEC ANNOUNCES PLAN TO BEGIN PHASE 2 SOIL REMEDIATION – SUMMER 2016

Phase 2 – Summer 2016 of the soil remediation at the Royalton-Hartland (Roy-Hart) school property in Middleport, New York is scheduled to begin in June 2016. The remediation will be conducted by the New York State Department of Environmental Conservation (DEC) at no cost to the Roy-Hart School District.

The DEC, working with the Roy-Hart Board of Education and school district, have reached an agreement on work that can be completed during the Summer 2016 Construction Season that will not have a negative impact upon school activities.

Documents related to the cleanup of this site can be found at the location(s) identified below under "Where to Find Information."

Highlights of the Upcoming Cleanup Activities

The goal of the cleanup action for the site is to achieve cleanup levels that protect public health and the environment. The Roy-Hart cleanup action for the summer 2016 construction season includes:

- 1. Excavation and removal of approximately 870 cubic yards (~1,370 tons) of soil from high school inner courtyards and grass areas adjacent to southwestern side of high school. (Figure 1)
2. Backfilling and restoration of excavation areas.
3. Installation of temporary fence to enclose all work areas. Privacy screen will be installed on fence as needed.
4. Baseline indoor air sampling of high school, with continued air monitoring during intrusive work.
5. Community Air Monitoring Program during intrusive work.

The mobilization is scheduled to begin mid June, while intrusive remedial work is scheduled for a 9-week period from June 27, 2016 to August 26, 2016. Work and equipment operation on the school property will take place six days a per week (Monday through Saturday) between 7:00AM and 6:00PM. Prior to the start of any construction activities, a security fence will be installed around the work area and baseline sampling of the High School will be completed.

*Operable Unit: An administrative term used to identify a portion of a site that can be addressed by a distinct investigation and/or cleanup approach. An operable unit can receive specific investigation, and a particular remedy may be proposed.

Next Steps

The NYSDEC will continue to work with the Roy-Hart Board of Education and School District to develop the construction schedule for the remaining work.

The New York State Department of Environmental Conservation (NYSDEC) will keep the public informed throughout the cleanup of the site.

Background

FMC Corporation owns and operates a facility due south of the school in the Village of Middleport. As a result of historic air emissions and surface discharges of process water, the facility contaminated nearby properties (including the Roy-Hart School), predominantly with arsenic.

The Roy-Hart school property was initially sampled and a partial soil removal was completed by FMC in 1996 and 1999 in the vicinity of the football field. The DEC performed additional soil sampling in 2014 and 2015 to more fully define the extent of arsenic contamination on the remainder of the property exceeding the 20-part-per-million (ppm) objective described in the May 2013 Final Statement of Basis (FSB). This data was used to determine the soil that will need to be removed.

Based on the soil sampling performed on the Roy-Hart school property by the DEC and FMC, arsenic contamination is at levels exceeding the 20 ppm soil cleanup objective at depths ranging from 0 to 4 feet below ground surface for the majority of the grassed areas on the property. During the 2015 construction season, the NYSDEC completed Phase 1 of the Roy-Hart remediation excavating approximately 8,000 cubic yards of contaminated soil from the field hockey field located southeastern portion of the school property. Based on data collected to date, approximately 44,400 cubic yards of soil remains to be excavated.

State Superfund Program: New York's State Superfund Program (SSF) identifies and characterizes suspected inactive hazardous waste disposal sites. Sites that pose a significant threat to public health and/or the environment go through a process of investigation, evaluation, cleanup and monitoring.

NYSDEC attempts to identify parties responsible for site contamination and require cleanup before committing State funds.

For more information about the SSF, visit: <http://www.dec.ny.gov/chemical/8439.html>

FOR MORE INFORMATION

Where to Find Information

Project documents are available at the following location(s) to help the public stay informed.

Royalton Hartland Community Library
9 South Vernon Street
Middleport, NY 14105
Phone: 716-735-3281

Project documents are also available on the NYSDEC website at:

<http://www.dec.ny.gov/chemical/37554.html>

Who to Contact

Comments and questions are always welcome and should be directed as follows:

Project Related Questions

Heide-Marie Dudek, P.E.
Department of Environmental Conservation
Division of Environmental Remediation
625 Broadway
Albany, NY 12233-7016
518-402-9813
heidi.dudek@dec.ny.gov

Site-Related Health Questions

Stephanie Selmer
New York State Department of Health
Bureau of Environmental Exposure Investigation
Corning Tower, Albany NY
518-402-7870
stephanie.selmer@health.ny.gov

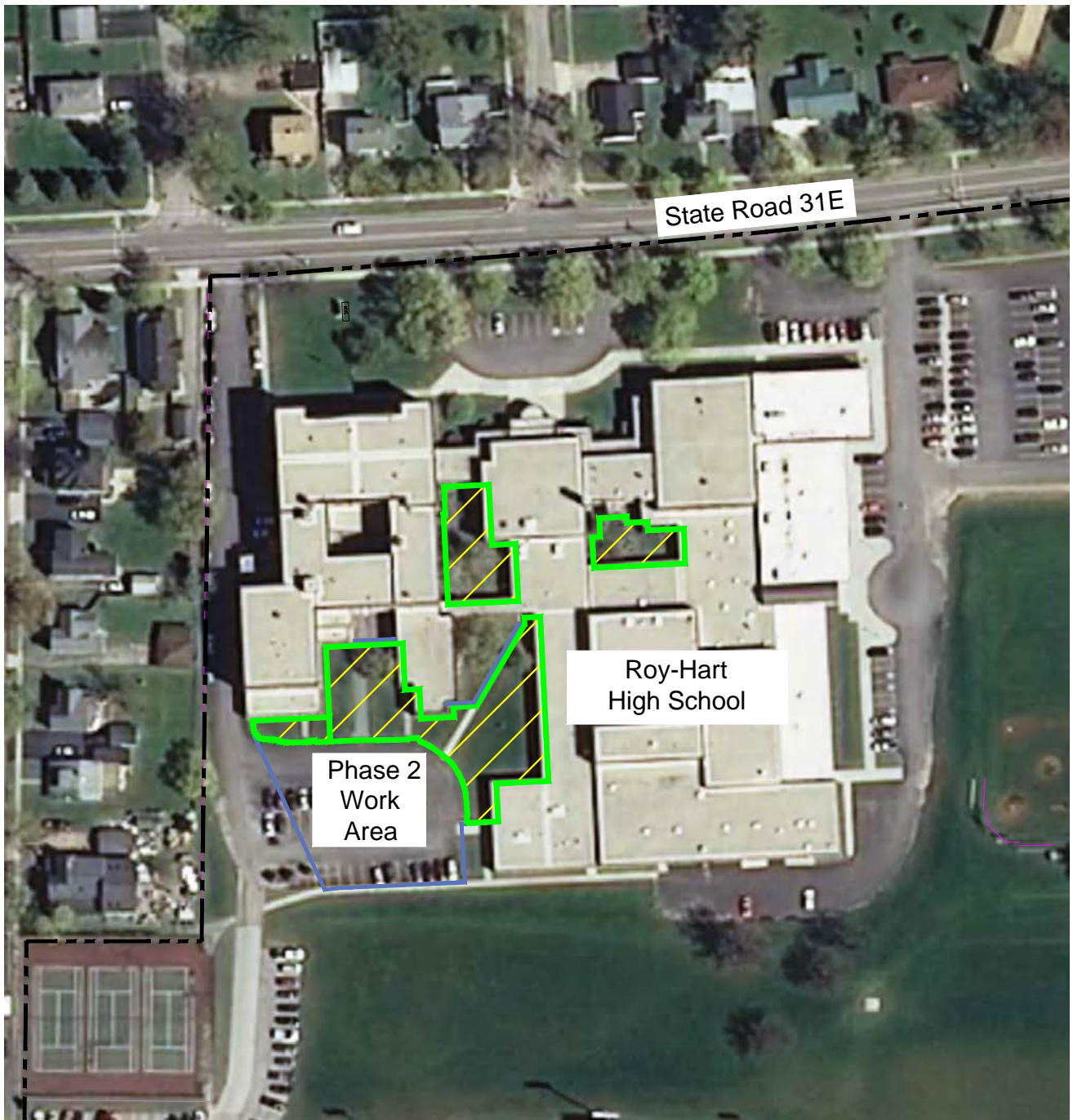
We encourage you to share this fact sheet with neighbors and tenants, and/or post this fact sheet in a prominent area of your building for others to see.

Receive Site Fact Sheets by Email

Have site information such as this fact sheet sent right to your email inbox. NYSDEC invites you to sign up with one or more contaminated sites county email listservs available at the following web page: <http://www.dec.ny.gov/chemical/61092.html>. It's quick, it's free, and it will help keep you *better informed*.

As a listserv member, you will periodically receive site-related information/announcements for all contaminated sites in the county(ies) you select.

Note: Please disregard if you already have signed up and received this fact sheet electronically.



LEGEND

-  Approximate School Property Boundary
-  Phase 2 Fence Location
-  Phase 2 Remediation Area

NOTES

1. Survey provided by Popli Design Group on 8/14/14 and 4/27/15.
2. Background image is from NYSGIS Clearing House (Niagara County, 2011).

