

# Texas Eastern Transmission, LP - Proposed NJ/NY Expansion Project

*Meeting with the New York State Department of  
Environmental Conservation and State Agencies*

February 23, 2010

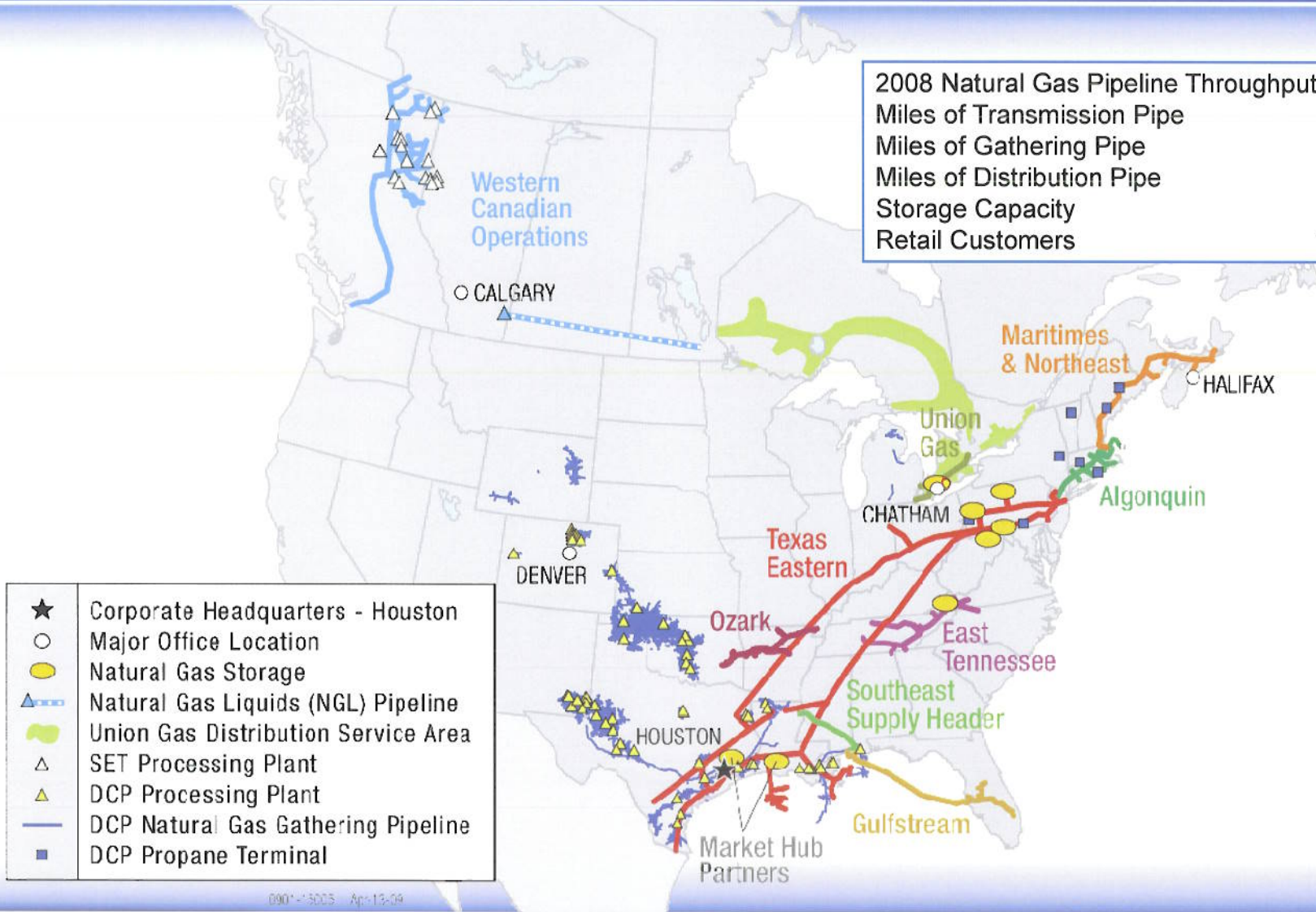
# Agenda

- Overview of NJ/NY Expansion Project
- Description of Proposed Pipeline Routes in New York
- Upstream Facilities: Ramapo Metering Station
- Ongoing Project Activities
- FERC Process
- Federal, State and New York City Permits
- Project Schedule
- Key State Agency / Key Project Contacts
- Identify Key Issues for Further Discussion Follow – Up

# Spectra Energy Assets



2008 Natural Gas Pipeline Throughput	3.6 Tcf
Miles of Transmission Pipe	18,900
Miles of Gathering Pipe	62,500
Miles of Distribution Pipe	37,000
Storage Capacity	275 Bcf
Retail Customers	1.3 million



- ★ Corporate Headquarters - Houston
- Major Office Location
- Natural Gas Storage
- ▲ Natural Gas Liquids (NGL) Pipeline
- Union Gas Distribution Service Area
- △ SET Processing Plant
- ▲ DCP Processing Plant
- DCP Natural Gas Gathering Pipeline
- DCP Propane Terminal

0901-13003 Apr-13-09

# Experience and Approach

*Highly experienced team of in-house resources with decades of relevant interstate pipeline siting, permitting and construction experience will have responsibility for this Project*

## **Key Outreach Objectives:**

- Ensure timely permitting and regulatory treatment
- Inform key stakeholders in NJ and NY of pending project
- Generate a positive response to the proposed project from the public, policymakers and other stakeholders
- Complement local community infrastructure modifications and activities
- Provide feedback on route options
- Identify areas of concern
- Collaborate with stakeholders and mitigate concerns

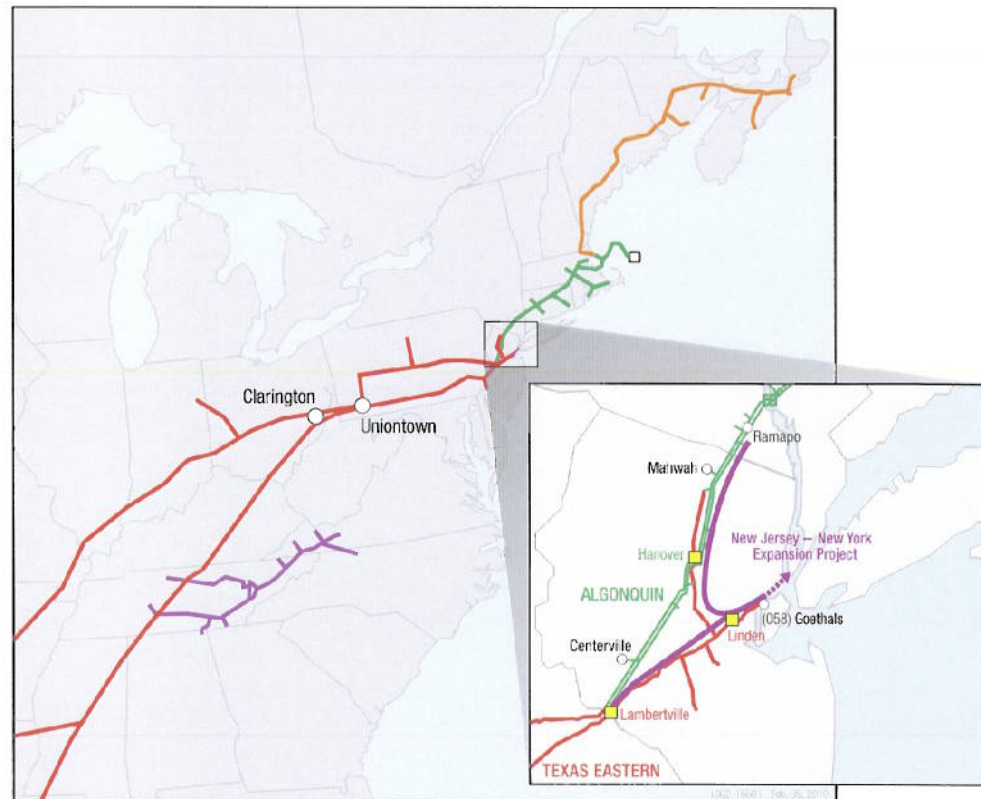
# Recent In-Street Construction Experience



*Innovate... Invest... Deliver.*

# Overview of NJ/NY Expansion Project

- Spectra Energy's New Jersey – New York expansion is an expansion of its existing Texas Eastern Transmission and Algonquin Gas Transmission pipeline systems to deliver new, critically needed natural gas supplies to the New Jersey and New York areas, including Manhattan.
  - **Location:** New Jersey and New York
  - **Scope:** Approximately 21 miles of new pipeline
  - **Capacity:** Up to 800 million cubic feet per day (mmcf/d)
  - **Ownership Interest:** 100 percent Spectra Energy
  - **Projected Completion:** Fourth Quarter 2013

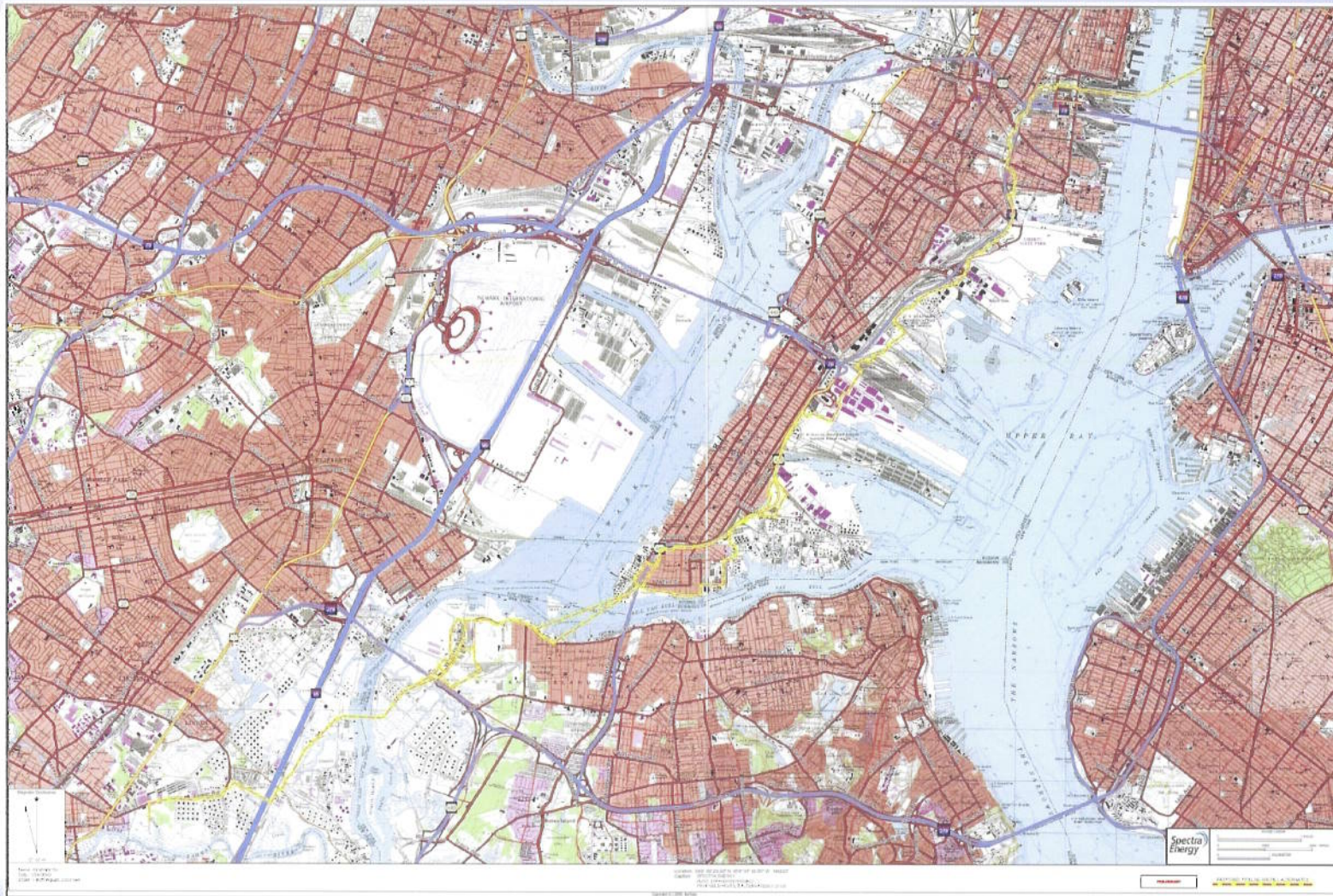


# Overview of NJ/NY Expansion Project (Cont'd)



- **Texas Eastern (TETCo) Pipeline Facilities**
  - ~5 Miles of Lift and Relay Pipeline from Linden, NJ to Staten Island, NY
  - ~16 Miles of New Pipeline from Staten Island to Manhattan, NY
- **Texas Eastern Metering Stations**
  - *Hanover, NJ Metering and Regulating Stations*
  - *Jersey City, NJ Metering and Regulating Station*
- **Miscellaneous Existing Texas Eastern Facility Modifications**
  - *Linden, NJ Compressor Station*
  - *Hanover, NJ Compressor Station*
  - *TETCo Metering and Regulating Stations - Union County, New Jersey, Richmond County, New York*
- **Miscellaneous Algonquin Facility Modifications**
  - *Cromwell, CT Compressor Station*
  - *Hanover, NJ Compressor Station*
  - *Ramapo, NY Metering and Regulating Station - Rockland County, New York*
  - *Mahwah, NJ Metering and Regulating Station*

# Overview of NJ/NY Expansion Project (Cont'd)





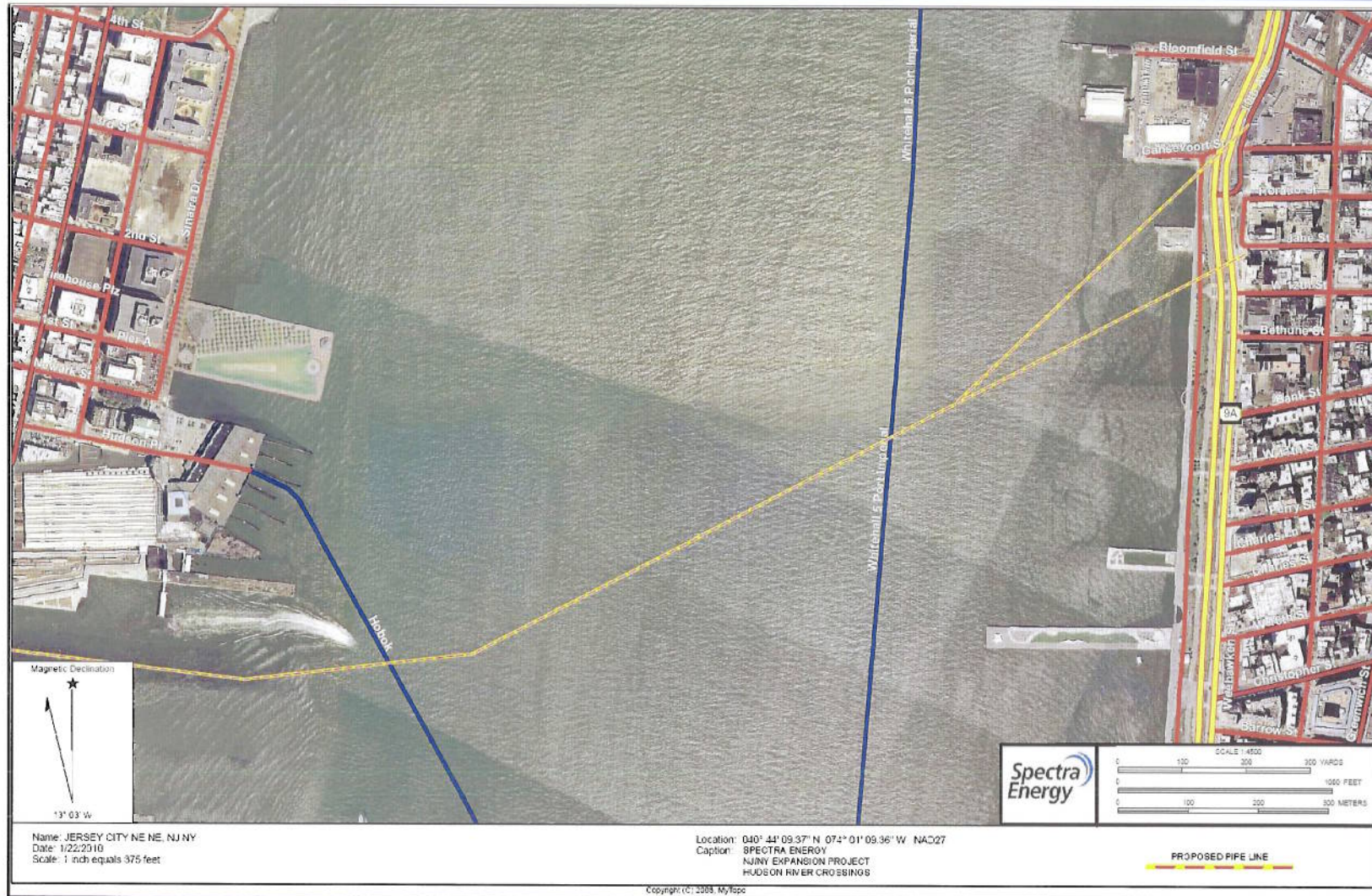
# Proposed Pipeline Routes in NY

- Numerous Alternatives Under Evaluation
  - Staten Island
  - Arthur Kill, Kill Van Kull and Hudson River Crossings
  - Manhattan Landfall
- Primary Evaluation Criteria
  - Engineering Constraints
  - Constructability
  - Residential/Commercial Development Constraints
  - Environmental Constraints

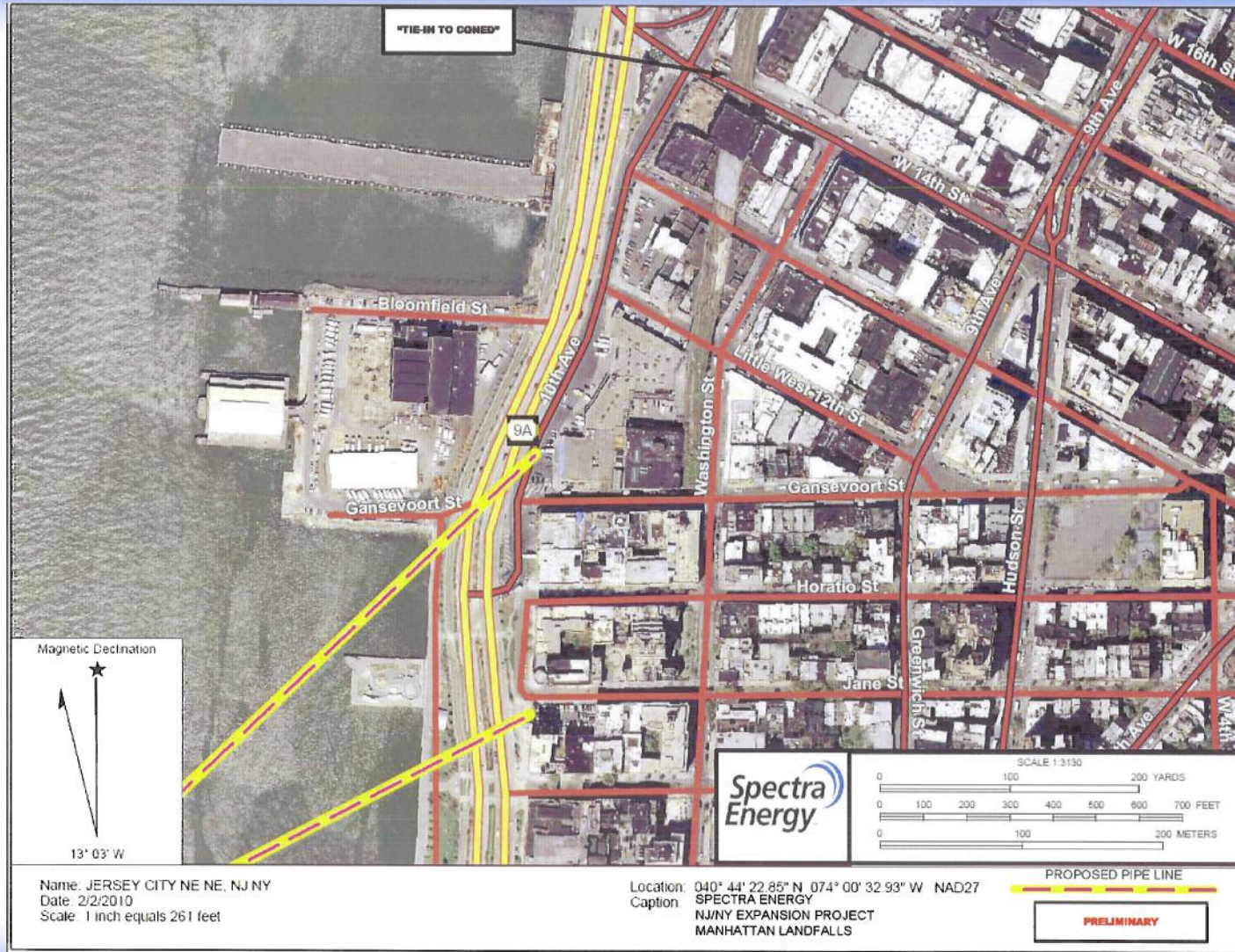
# Proposed Pipeline Routes in NY (Cont'd)



# Proposed Pipeline Routes in NY (Cont'd)



# Proposed Pipeline Routes in NY (Cont'd)



Copyright (C) 2008, MyTopo

# Ramapo Meter Station Site

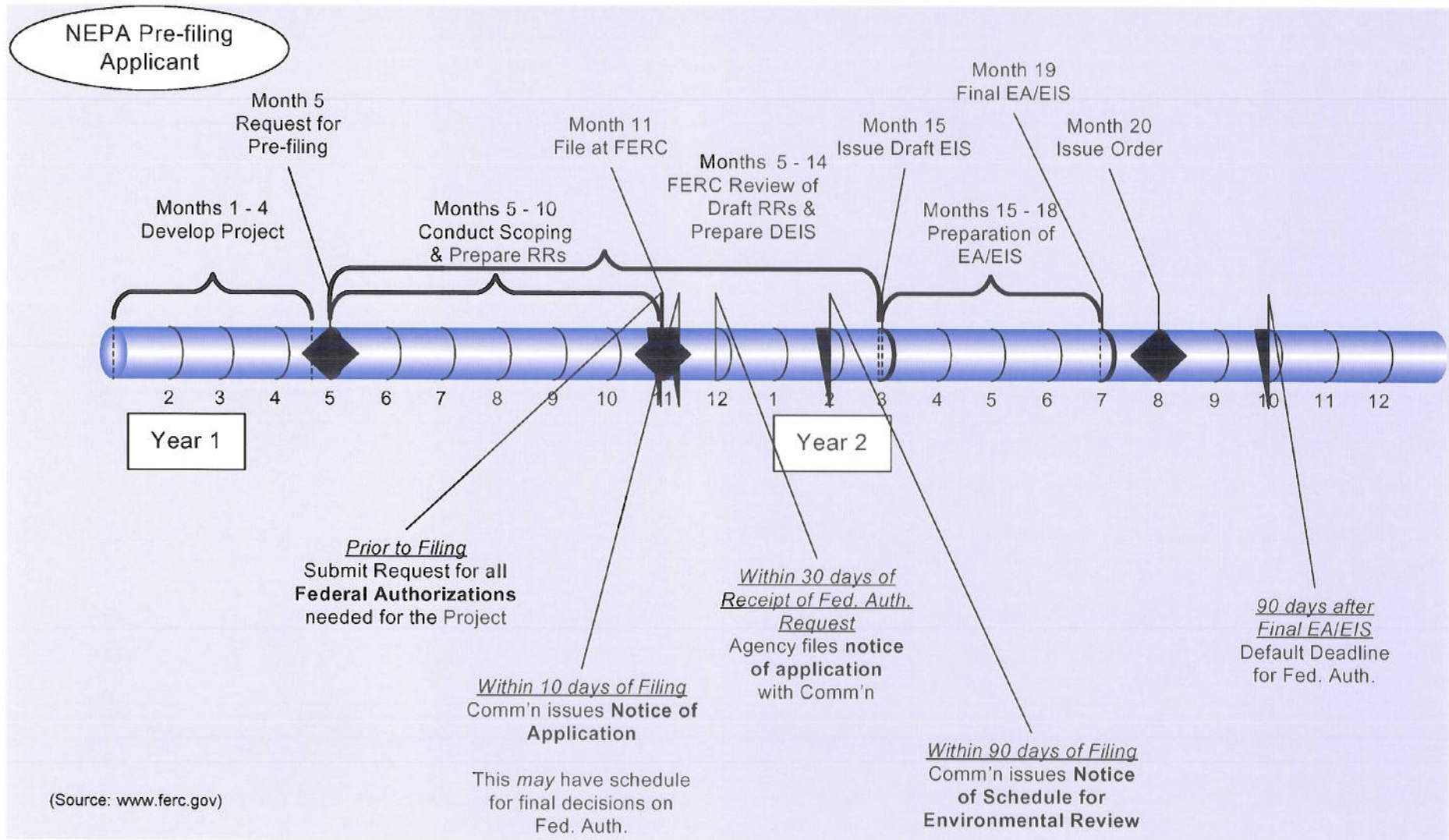


# Ongoing Project Activities

- Securing Survey Permissions
- HDD Corings
- Field Surveys
  - Civil
  - Wetland/Water Body Resources
  - Cultural Resources
- File Reviews of Known Contaminated Sites
- Agency Consultations / Meetings
  - Collecting Existing Utility Data



# Typical FERC Pre-Filing Timeline



# Permits and Approvals

- **Federal**
  - *FERC*: Certificate of Public Convenience and Necessity
  - *Army Corps of Engineers*: Sections 10/404 Individual Permit
  - *EPA, NOAA, FWS, Coast Guard*: Consultation
- **New York State**
  - *DEC*: 401 Certificate, Wetland permits, SPDES, Protection of Waters Permit, Coastal Erosion Control
  - *DOS*: Coastal Zone Consistency
  - *OGS*: Use of Lands Underwater
  - *DOT*: Work and Occupancy Permits; Right-Of-Way
  - *Hudson River Park Trust*: Right-of-Way
  - *SHPO*: NHPA Section 106 Review



- **New York City**

- *Office of Environmental Coordination*: NEPA Cooperation
- *DOT*: Right-Of-Way, Construction and Street Opening Permits
- *DEP*: Infrastructure Permits
- *Landmarks Commission*: NHPA Section 106 Review
- *Department of Parks*: Right-Of-Way, Construction and Excavation Permit, Tree Cutting Permit
- *Department of Business Services*: Right-Of-Way
- *Department of City Planning*: Coastal Zone Consistency, ULURP Applicability

# FERC Deliverable / Permit Schedule

- Early Project Development
  - Stakeholder Outreach, Field Surveys January 2009 / Ongoing
- FERC Pre-Filing Commenced May 2010 – December 2010
  - Hold formal Open House Meetings (June / July 2010)
  - FERC Scoping Meetings and Comment Period (July / August 2010)
  - Prepare FERC Draft Resource Reports (August 2010 / November 2010)
- Primary Permitting Activities November / December 2010 – February 2012
  - File FERC and Federal/State Permit Applications (November / December 2010)
  - FERC NEPA Review, Draft EIS, comment/ Final EIS (January 2011 – October 2011)
    - Certificate Issued (November 2011)
    - Other Federal and State/Local Permits Issued (November 2011 – February 2012)

# Moving Forward

- Key Agency Contacts
- Key Project Contacts
- Key Follow-Up Issues
- Discussion

