

19 January 2012

Michael J. Hinton, P.E.
Environmental Engineer 2
New York State Department of Environmental Conservation
Division of Environmental Remediation - Region 9
270 Michigan Avenue
Buffalo, New York 14203



RE: Monthly Progress Report – December 2011
Greif, Inc. Facility – Tonawanda, New York
NYSDEC VCP Number V00334-9

***Key Actions
This Period:***

- Performed routine operations and maintenance (O&M) on the Pilot Sub-Slab Depressurization (SSD) system and dense, non-aqueous phase liquid (DNAPL) recovery equipment. Collected and recorded relevant data. Data collected included liquid level measurements in selected Site wells and monitoring points (Table 1), vacuum readings in vacuum monitoring points (Table 2), and treatment system operational data (Table 3). The locations of wells and other sampling and monitoring points are presented in Figure 1. A map showing the estimated distribution of vacuum beneath the floor slab on 22 December 2011 is presented in Figure 2.
- Vacuum readings were taken using a micro-manometer to allow for more sensitive readings in areas previously reported with no vacuum.
- Greif received draft deed restrictions from the NYSDEC's consultant.

***Problems/
Resolutions:***

- Water condensate from inside system piping was observed while isolating Pilot SSD System headers PG-101 and PG-104. The water is apparently originating from condensation at one or more points inside SSD System piping. ERM removed approximately 27-gallons of water condensate from the blower's knock-out pot. ERM will review system data and evaluate options to address the water accumulation.

- ERM repaired a leak in SSD System piping located between the pre-carbon temperature gauge and the granular activated carbon (GAC) vessels.
- Vacuum readings were collected using a micro-manometer, an instrument that is more sensitive to low vacuum readings. Using the micro-manometer, ERM was able to detect measurable vacuum at 10 vacuum monitoring points that previously were recorded as having no vacuum during the November 2011 O&M visit. A micro-manometer will be used at the Site during subsequent O&M visits.

Analytical Data Received:

- None.

Documents Submitted:

- Monthly Progress Report for November 2011 dated 16 December 2011.

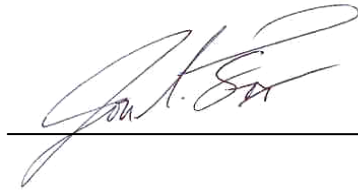
Anticipated Actions – January 2012:

- Routine O&M of the Pilot SSD System and DNAPL recovery equipment and adjustment of extraction and recovery parameters as necessary based on Site data and observations.
- Preparation for SSD System modifications to complete remedial construction activities at the Site after receipt of NYSDEC and Client approval.
- Coordination with the NYSDEC and Greif on their preparation of a deed restriction document for the Site.
- Compilation of data from remedial construction activities and planning for preparation of a Site Management Plan and Final Engineering Report.

NYSDEC-Approved Field Decisions:

- None.

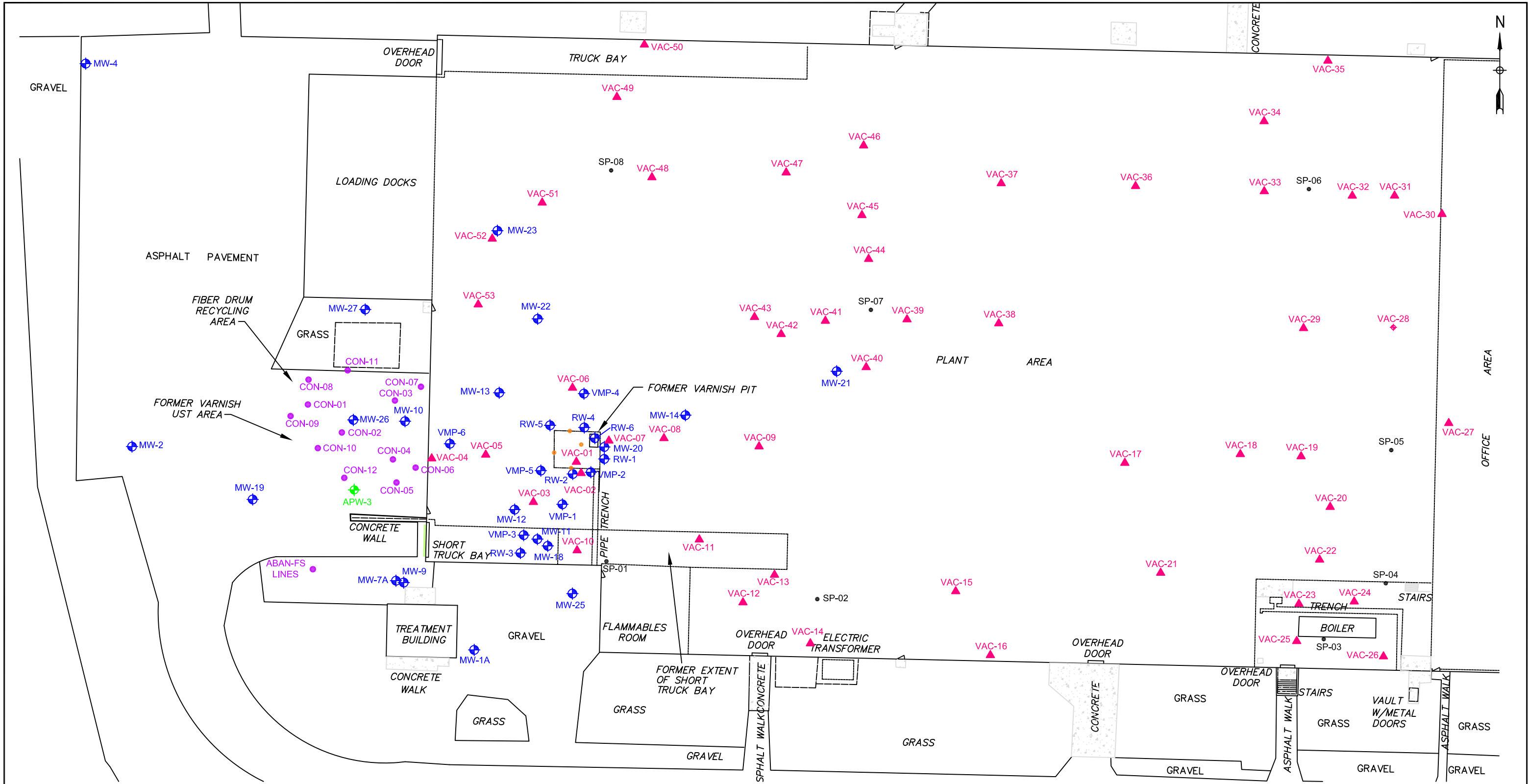
Prepared By:



Jon S. Fox, P.G.
Senior Consultant

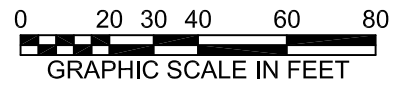
Date: 19 January 2012

Cc: Pete Gruene (Sonoco)
Mike Sunderland (Sonoco)
Patrick Wolfe (Greif)
Gregory Sutton, P.E. (NYSDEC)
James Charles, Esq. (NYSDEC)
Matt Forcucci (NYSDOH)
A. Joseph White (NYSDEC)
John Kuhn (ERM)
John Mohlin, P.E. (ERM)
Rob Sents (ERM)
Jason Reynolds (ERM)

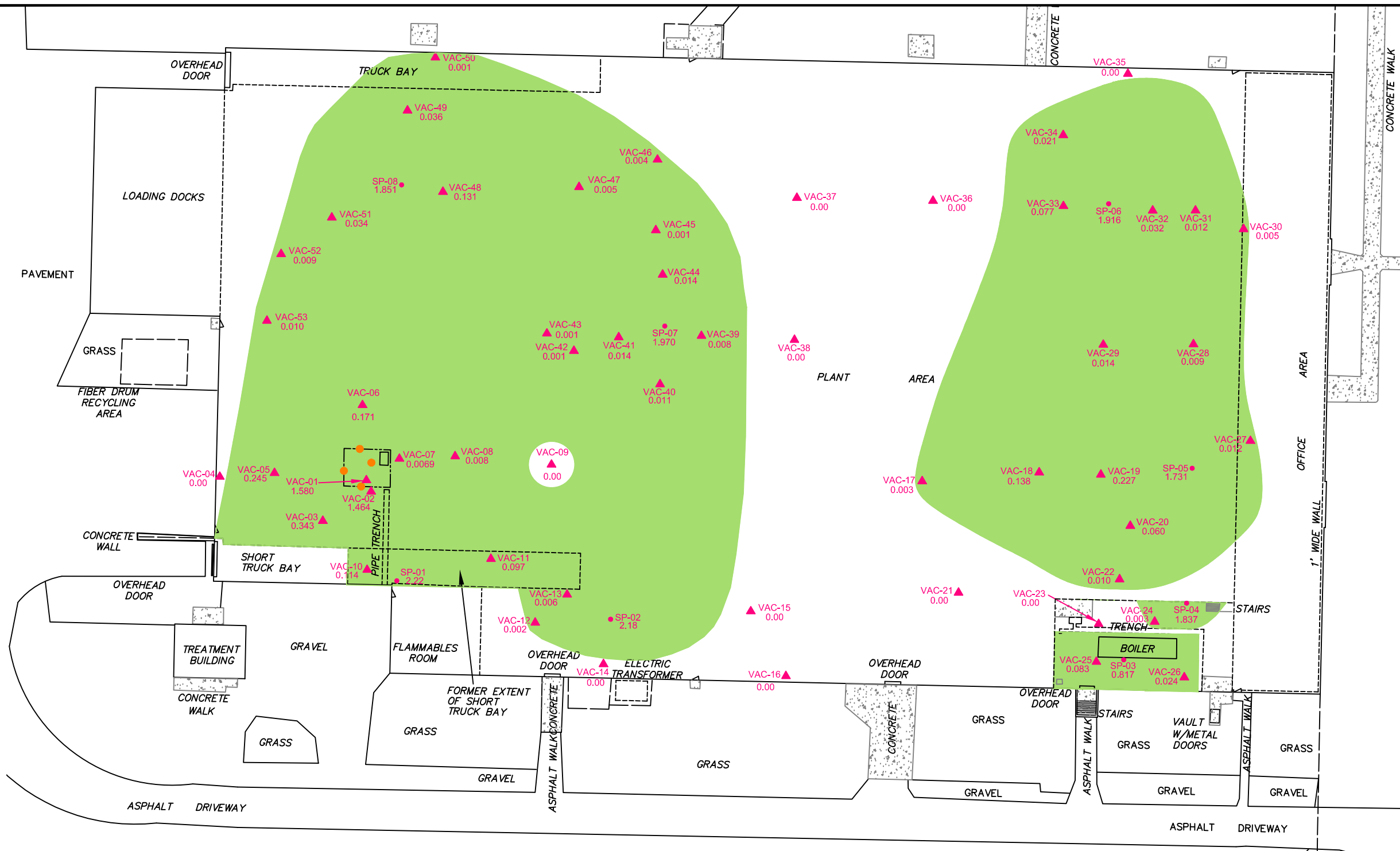


LEGEND

- ▲ Vacuum Monitoring Point Location
- ⊕ Monitoring or Recovery Well Location
- ⊕ Antenna Placement Well
- Suction Point Location
- Horizontal Suction Point Location
- Soil Confirmation Location
- Former Varnish Pit
- ▴ Man Door
- ▭ Concrete Pad



TITLE SAMPLE AND MEASUREMENT LOCATIONS GREIF FACILITY-TONAWANDA, NEW YORK NYSDEC VCP NUMBER V00334-9		
PREPARED FOR SONOCO PRODUCTS COMPANY		
 Environmental Resources Management	SCALE GRAPHIC	FIGURE 1
DRAWN: EMF	JOB NO.: 0129254.01	FILE NAME: 0129254-01-007
DATE: 06-Oct-2011		

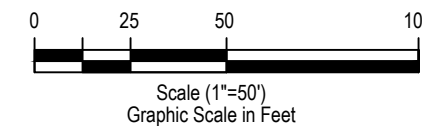


LEGEND

- Horizontal Suction Point Location
- Vertical Suction Point Location
- ▲ Vacuum Monitoring Point Location (vacuum in " H₂O)
- NM Not Measured
- Estimated Extent of Sub-Floor Vacuum
- Former Varnish Pit
- Man Door
- Concrete Pad

NOTES:

1. " H₂O = inches of water column



TITLE

SUBSURFACE VACUUM DISTRIBUTION
22 DECEMBER 2011
GREIF FACILITY-TONAWANDA, NEW YORK

PREPARED FOR
SONOCO PRODUCTS COMPANY

 Environmental Resources Management	SCALE	2
	DATE	
DRAWN: EMF	JOB NO.: 01127477.01	FILE NAME: 0129254-01-016
		04-JAN. 2012

Table 1
Summary of Non-Aqueous Phase Liquid Thicknesses in Wells
Greif Facility - Tonawanda, New York
NYSDEC VCP Number V00334-9

WELL	RW-1 (ft.) (DNAPL)	RW-2 (ft.) (DNAPL)	RW-4 (ft.) (DNAPL)	RW-5 (ft.) (LNAPL)	RW-6 (ft.) (DNAPL)	VMP-2 (ft.) (DNAPL)	VMP-5 (ft.) (DNAPL)	MW-20 (ft.) (DNAPL)	MW-23 (ft.) (LNAPL)
Date									
19-May-08	0.00	0.00	0.00	0.00	NI	0.00	HS	0.09	0.14
30-May-08	0.00	0.16	0.00	0.00	NI	0.00	HS	0.03	0.14
16-Jun-08	0.00	0.14	0.00	0.02	NI	0.00	0.02	0.07	0.13
25-Jun-08	0.00	0.16	0.00	0.02	NI	0.00	HS	0.07	0.26
3-Jul-08	0.00	0.16	0.00	0.02	NI	0.00	HS	0.09	0.18
23-Jul-08	0.00	0.16	0.00	0.02	NI	0.00	HS	0.10	0.09
6-Aug-08	0.03	0.16	0.00	0.04	NI	0.00	HS	0.11	0.09
19-Aug-08	0.03	0.16	0.00	0.04	NI	0.00	HS	0.13	0.11
21-Nov-08	HS	0.11	0.00	0.00	NI	0.00	HS	0.22	0.29
17-Dec-08	HS	0.11	0.00	0.00	NI	0.00	HS	0.24	0.29
14-Jan-09	0.00	0.00	0.00	0.00	NI	0.00	0.00	HS	0.13
26-Feb-09	0.00	0.00	0.00	0.00	NI	0.00	0.00	0.01	0.24
12-Mar-09	0.00	0.00	0.00	0.00	NI	0.00	0.00	0.00	0.09
22-Apr-09	0.00	0.00	0.00	0.00	NI	0.00	0.00	0.00	0.11
13-May-09	0.00	0.00	0.00	0.00	NI	0.00	0.00	0.00	0.09
25-Jun-09	NM	0.00	NM	0.00	NI	0.00	0.00	NM	0.12
17-Jul-09	NM	0.00	NM	0.00	NI	0.00	0.00	NM	0.11
27-Aug-09	0.00	0.00	0.00	0.00	NI	0.00	NM	NM	0.09
25-Sep-09	0.00	0.00	0.00	0.00	NM	0.00	NM	0.04	0.11
16-Oct-09	NM	0.00	0.00	0.00	NM	0.00	NM	NM	0.11
19-Nov-09	NM	0.00	NM	NM	NM	0.00	NM	NM	0.21
17-Dec-09	0.00	0.00	NM	NM	NM	0.00	0.00	0.01	0.23
14-Jan-10	0.00	0.00	0.00	NM	NM	0.00	0.00	0.01	0.21
17-Feb-10	0.00	0.00	NM	NM	NM	0.00	0.00	0.01	0.17
18-Mar-10	0.00	0.00	0.00	0.00	NM	0.00	0.00	0.01	0.09
13-Apr-10	0.00	0.00	0.00	0.00	0.49	0.00	0.00	0.01	0.12
18-May-10	0.00	0.00	0.00	0.00	0.53	0.00	NM	0.01	0.08
15-Jun-10	0.00	0.00	0.00	NM	0.01*	0.00	0.00	0.01	0.07
14-Jul-10	0.00	0.00	0.00	0.00	0.04	0.00	0.00	0.00	0.07
13-Aug-10	0.00	NM	0.00	NM	0.08	0.00	0.00	HS	0.10
14-Sep-10	0.00	NM	0.00	NM	0.04	0.00	0.00	NM	0.06
14-Oct-10	0.00	0.00	0.00	0.00	0.05	0.00	0.00	0.01	0.08
22-Nov-10	0.00	0.00	NM	0.00	0.04	0.00	0.00	0.01	0.14
15-Dec-10	0.00	0.00	0.00	NM	0.01	0.00	NM	0.01	0.09
18-Jan-11	0.00	0.00	0.00	NM	HS	0.00	NM	0.02	0.09
21-Feb-11	NM	0.00	0.00	0.00	0.03	0.00	0.00	0.03	0.04
11-Mar-11	0.00	0.00	0.00	0.00	0.21	0.00	0.00	0.04	0.03
21-Apr-11	0.00	0.00	0.00	0.00	0.00	0.00	0.00	0.00	0.04
24-May-11	0.00	0.00	0.00	NM	0.15	0.3	0.00	0.1	0.1
21-June-11	0.00	0.00	0.00	0.00	0.1	0.00	0.00	0.03	0.08
21-July-11	0.00	0.00	0.00	NM	HS	0.00	0.00	0.01	0.06
29-Aug-11	0.00	0.00	0.00	0.00	0.06	0.00	0.00	0.00	HS
26-Sept-11	0.00	NM	0.00	0.00	0.10	0.00	NM	0.04	HS
28-Oct-11	0.00	0.00	NM	0.00	0.03	0.00	0.00	0.02	HS
18-Nov-11	0.00	0.00	NM	NM	HS	0.00	0.00	0.01	0.04
22-Dec-11	0.00	0.00	NM	NM	0.03	0.00	0.00	0.02	0.06

Notes:

All values are reported in feet as measured with an electronic interface probe.

HS - heavy sheen but no measureable thickness.

NM - not measured; was covered with pallets or other surface obstruction.

NI - not installed as of this date.

* - Product level after ERM initiated DNAPL recovery test

Table 2
Summary of Vacuum Readings
Greif, Inc. - Tonawanda, NY
NYSDEC VCP Number V00334-9

Location	Vac-01	Vac-02	Vac-03	Vac-04	Vac-05	Vac-06	Vac-07	Vac-08	Vac-09	Vac-10	Vac-11	Vac-12	Vac-13	Vac-14
Date														
16-Jun-10	0.1175	0.1375	0.1375	0	0.1425	0.1625	0.095	0.0325	0	0.10	0.0950	0	NM	0
14-Jul-10	1.65	1.45	0.47	0	0.68	0.46	0.125	0.0525	0	0.1625	0.16	0	0	0
13-Aug-10	1.3	1.25	0.46	0	0.65	0.45	0.135	0.07	0	0.19	0.175	0	0	NM
14-Sep-10	0.8	NM	0.29	0	0.28	0.195	0.055	0.015	0	NM	0.125	0	0	0
14-Oct-10	0.82	0.84	0.29	0	0.28	0.185	0.05	0.015	0	0.1375	0.12	0	0	NM
22-Nov-10	0.29	2.3	0.49	0	0.35	0.28	0.105	0.0025	0	0.155	0.135	0	NM	NM
16-Dec-10	0.26	2.1	0.42	0	0.2	0.14	0.075	0	0	0.13	0.105	0	0	NM
19-Jan-11	0.77	2	0.41	0	0.24	0.18	0.1	NM	0	0.155	0.125	0	NM	0
21-Feb-11	1.35	1.8	0.4	0	NM	0.17	0.1	0	0	NM	0.12	NM	0	0
11-Mar-11	1.8	2.25	0.5	0	NM	0.22	NM	0.01	0	NM	0.12	0	0	NM
21-Apr-11	1.35	2	0.45	0	0.25	0.2	0.1025	0	0	0.155	0.135	0	0	0
24-May-11	2.15	2.05	0.47	0	0.35	0.28	0.1325	0.0275	0	0.1625	0.15	0	NM	0
21-Jun-11	2.05	2.1	0.46	0	0.45	0.4	0.165	0.0575	0	0.19	0.18	0	NM	0
21-Jul-11	2.55	2.25	0.46	0	0.62	0.55	0.2	0.1	0	0.21	0.21	0	0	0
29-Aug-11	2.3	2.2	0.44	0	0.48	0.4	0.155	0.055	0	0.15	0.145	0	0	0
26-Sep-11	1.3	NM	0.46	0	0.44	0.36	0.155	0.06	0	0.1775	0.16	0	0.0025	0
28-Oct-11	1	1.6	0.33	0	0.2125	0.195	0.0925	0.005	0	0.1125	0.1	0	0	0
18-Nov-11	NM	1.3	0.28	0	0.135	0.13	0.06	0.005	0	0.1	0.09	0	0	0
22-Dec-11	1.58	1.464	0.343	0	0.245	0.171	0.069	0.008	0	0.114	0.097	0.002	0.006	0

Location	Vac-15	Vac-16	Vac-17	Vac-18	Vac-19	Vac-20	Vac-21	Vac-22	Vac-23	Vac-24	Vac-25	Vac-26	Vac-27	Vac-28
Date														
16-Jun-10	0	NM	0.0025	0.25	0.42	0.175	0	0.0075	0	0	0.089	0.020	0.005	0.0175
14-Jul-10	0	0	NM	0.31	0.54	0.205	0	0	NM	NM	NM	NM	0.005	0.01
13-Aug-10	0	0	0.0025	0.31	0.52	NM	0	0	0	0	0.08	0.02	0.005	0.025
14-Sep-10	0	0	0	0.165	0.31	0.075	0	0	0	0	0.08	0.015	0.005	0.005
14-Oct-10	NM	0	0	0.18	0.35	0.105	0	0	0	0	0.08	0.015	0.0025	0.005
22-Nov-10	0	0	0	0.2	0.35	0.1	0	0	0	0	0.08	0.02	0.0025	0.0025
16-Dec-10	0	0	0	0.145	0.29	0.08	0	0	0	0	0.055	0.01	0	0.0025
19-Jan-11	0	0	0	0.15	0.29	0.08	0	0	0	0	0.075	0.02	0	0.0075
21-Feb-11	0.005	0	NM	0.18	0.35	NM	0	0.0125	0	0	0.0675	0.035	0.015	0.01
11-Mar-11	0	0	0	0.1875	0.34	0.12	0	0	0	0	0.08	0.025	0.01	0.02
21-Apr-11	0	0	0	0.18	0.32	0.105	0	0.01	0	0	0.08	0.0325	0.01	0.0125
24-May-11	0	0	0	0.215	0.36	0.1475	0	0	0	0	0.0775	0.03	0.015	0.0175
21-Jun-11	0	0	NM	0.23	0.39	0.16	0	0	0	0	0.085	0.03	0.02	0.02
21-Jul-11	0	0	NM	0.24	0.39	0.17	0	0.0175	0	0	0.1	0.025	0.02	0.035
29-Aug-11	0	0	NM	0.21	0.32	0.12	0	0	0	0	0.09	0.0225	0.0175	0.02
26-Sep-11	0	0	NM	0.205	0.32	0.12	0.0025	0	0	0	0.0725	0.025	0.0175	0.0175
28-Oct-11	0	0	0	0.15	0.24	0.0525	0	0	0	0	0.08	0.03	0.01	0.01
18-Nov-11	0	0	0	0.14	0.21	0.06	0	0.0075	0	0	0.085	0.0275	0.015	0.015
22-Dec-11	0	0	0.003	0.138	0.227	0.06	0	0.01	0	0.003	0.083	0.024	0.012	0.009

Table 2
Summary of Vacuum Readings
Greif, Inc. - Tonawanda, NY
NYSDEC VCP Number V00334-9

Location	Vac-29	Vac-30	Vac-31	Vac-32	Vac-33	Vac-34	Vac-35	Vac-36	Vac-37	Vac-38	Vac-39	Vac-40	Vac-41	Vac-42
Date														
16-Jun-10	0.040	0	0	0.040	0.0675	0.0225	NM	0	0.030	NM	0.025	0.0275	0.0525	0.0025
14-Jul-10	NM	NM	NM	NM	0.125	0.0325	0	0	0	NM	0.03	0.0325	NM	0.005
13-Aug-10	0.0725	0	0.0375	0.0875	0.1625	0.05	0	0	0	0	0.05	0.04	0.0875	0.015
14-Sep-10	0.025	0	0.01	0.03	0.06	0.015	0	0	0	0	0.02	0.0075	0.025	0.0025
14-Oct-10	0.025	0	0.005	0.03	0.055	0.01	0	0	0	0	0.01	0.01	0.025	NM
22-Nov-10	0.015	0	0.0025	0.025	0.065	0.01	0	NM	0	0	0.005	NM	0.015	NM
16-Dec-10	0.02	NM	0.005	0.035	0.055	0.015	0	NM	0	0	0.005	NM	0.0125	NM
19-Jan-11	0.02	NM	0.0075	0.03	0.04	0.015	0	0	0	0	0.01	NM	0.0125	NM
21-Feb-11	0.015	0	0.01	0.035	0.0325	NM	NM	0	0	0.0025	0.015	0.01	0.0175	NM
11-Mar-11	0.02	0	0.02	0.0425	0.0625	0.03	0	0	0	0	0.0225	0.02	0.02	NM
21-Apr-11	0.0175	0	0.01	0.035	0.06	NM	NM	0	0	0	0.01	0.005	0.0125	0
24-May-11	0.0325	0	0.0225	0.0525	0.075	NM	NM	0	0	NM	0.0125	NM	0.035	0
21-Jun-11	0.04	0	0.03	0.075	0.11	0.04	NM	0	0	0	0	0.0225	0.0425	0
21-Jul-11	0.055	0	0.05	0.1025	0.17	0.06	0	0.0125	0	0	0.0325	0.035	0.08	0.0075
29-Aug-11	0.0375	0	0.0325	0.07	0.13	0.0375	0	0	0	0	NM	0.02	0.035	0.05
26-Sep-11	0.045	0	0.03	0.06	0.1175	0.035	0	0	NM	0	0	NM	NM	0.01
28-Oct-11	NM	0	0.0075	0.0375	0.0775	0.0775	NM	0	0	0	0.0075	0.005	0.01	NM
18-Nov-11	NM	0	0.01	0.0325	0.065	0.0175	NM	0	0	0	0.0075	0	0.01	NM
22-Dec-11	0.014	0.005	0.012	0.032	0.077	0.021	0	0	0	0	0.008	0.011	0.014	0.001

Location	Vac-43	Vac-44	Vac-45	Vac-46	Vac-47	Vac-48	Vac-49	Vac-50	Vac-51	Vac-52	Vac-53
Date											
16-Jun-10	0.0025	0.0425	0.015	0.0125	NM	0.2125	0.0925	0	0.080	0.0125	0.0125
14-Jul-10	0	NM	NM	0.0125	NM	0.21	0.0875	NM	0.8	0.0175	0.0225
13-Aug-10	0	NM	NM	NM	NM	0.22	0.0925	0	0.085	NM	0.0225
14-Sep-10	0	NM	NM	0.0025	NM	0.1275	0.05	0	0.04	0.005	0
14-Oct-10	NM	NM	0	NM	NM	0.11	0.0375	0	0.03	0	0
22-Nov-10	0	NM	0	0	NM	0.135	0.0475	0	0.03	0.0025	0
16-Dec-10	0	0.015	0	0	NM	0.09	0.02	0	NM	0	0
19-Jan-11	0	NM	0	0	NM	0.12	0.035	0	0.03	0.0025	0
21-Feb-11	0	0.0325	0.01	0	0	0.125	0.035	0	0.03	0	0
11-Mar-11	0	NM	0.02	NM	0.005	0.16	0.0575	NM	0.05	0.03	0.01
21-Apr-11	0	NM	0	NM	0	0.1375	0.045	NM	0.025	0	0
24-May-11	0	0.03	0.005	NM	0.0075	0.175	0.06	0	0.055	0.005	0.0125
21-Jun-11	NM	NM	0.0175	NM	0.02	0.195	0.0675	0	0.065	0.0175	0.03
21-Jul-11	0.0125	0.0525	0.0375	0.025	0.035	0.235	0.0875	0	0.07	0.02	0.06
29-Aug-11	0	0.0325	NM	NM	NM	0.185	0.07	0	0.06	0.03	0.09
26-Sep-11	0.0075	NM	0.005	NM	0.0125	0.17	0.07	0	0.055	0.175	0.0325
28-Oct-11	0	0.0075	0	NM	0.0075	0.1225	0.03	0	0.03	0	0.0025
18-Nov-11	0	NM	0	0	0	0.09	0.03	0	0.0275	0.005	0.005
22-Dec-11	0.001	0.014	0.001	0.004	0.005	0.131	0.036	0.001	0.034	0.009	0.01

Notes:
- All vacuum and/or pressure readings are reported in inches of water column ("H2O).
NM = not measured; was covered with pallets or other surface obstructions

Table 3
Summary of Treatment System Data
Greif Facility - Tonawanda, New York
NYSDEC VCP Number V00334-9
Page 1 of 2

Location Units	Header Vacuum						Header Air Flow					
	PG-101 " H ₂ O	PG-102 " H ₂ O	PG-103 " H ₂ O	PG-104 " H ₂ O	PG-105 " H ₂ O	PG-106 " H ₂ O	PG-101 cfm	PG-102 cfm	PG-103 cfm	PG-104 cfm	PG-105 cfm	PG-106 cfm
Date												
17-Dec-09	NF	11.5	NM	NF	NF	NF	NF	NM	NM	NF	NF	NF
14-Jan-10	NF	40	NM	NF	NF	NF	NF	94	NM	NF	NF	NF
17-Feb-10	NF	4.2	NM	NF	NF	NF	NF	16	NM	NF	NF	NF
18-Mar-10	NF	1.95	NM	NF	NF	NF	NF	15	NM	NF	NF	NF
13-Apr-10	NF	2.85	13.0	NF	NF	NF	NF	73	233	NF	NF	NF
18-May-10	NF	3.95	13.0	NF	NF	NF	NF	83	212	NF	NF	NF
15-Jun-10	NF	2.60	15.5	NF	NF	NF	NF	65	225	NF	NF	NF
14-Jul-10	NM	1.75	4.10	NM	NM	NF	NM	26	75	NM	NM	NF
13-Aug-10	3.75	1.30	3.75	3.70	3.75	NF	67	19	73	65	82	NF
14-Sep-10	3.15	0.85	3.25	3.15	3.2	NF	68	18	74	65	72	NF
14-Oct-10	3.45	0.91	3.50	3.45	3.55	NF	70	32	76	66	72	NF
22-Nov-10	4.05	0.30	4.15	4.00	4.2	NF	76	14	80	70	82	NF
16-Dec-10	4.05	0.30	4.05	3.95	4.05	NF	70	14	85	75	94	NF
19-Jan-11	3.55	0.85	3.60	3.55	3.6	NF	82	39	135	92	164	NF
21-Feb-11	3.4	1.55	3.50	3.40	3.5	NF	116	36	105	78	144	NF
11-Mar-11	3.35	2.00	3.35	3.35	3.4	NF	98	73	65	76	141	NF
21-Apr-11	3.1	1.65	3.10	3.05	3.15	NF	97	84	103	106	170	NF
24-May-11	3.0	2.60	3.10	3.00	3.10	NF	89.61	53.94	89.61	71.34	87.87	NF
21-Jun-11	3.0	2.70	3.00	3.00	3.10	NF	115.71	90.48	106.14	87.87	96.57	NF
21-Jul-11	3.1	2.80	3.20	3.10	3.10	NF	113.97	87.00	100.92	80.48	140.07	NF
29-Aug-11	3.00	2.90	3.00	3.00	3.00	NF	106.14	69.60	93.09	75.17	100.31	NF
26-Sep-11	2.90	1.40	2.90	2.90	2.90	NF	95.70	63.95	105.27	90.48	127.02	NF
28-Oct-11	2.70	1.20	2.80	2.70	2.80	NF	63.51	39.67	101.79	86.13	114.84	NF
18-Nov-11	2.50	1.00	2.50	2.40	2.50	NF	73.08	55.68	107.88	72.65	115.71	NF
22-Dec-11	2.40	1.80	2.50	2.40	2.40	NF	63.95	52.20	62.21	72.65	72.65	NF

Location Key

- PG-101 = Suction Pits 05, 06, 07 and 08 (pipe 1 of 2).
- PG-102 = interior of former varnish pit.
- PG-103 = horizontal suction points through former varnish pit's north, west, and south walls.
- PG-104 = Suction Pit 05, 06, 07, and 08 (pipe 2 of 2).
- PG-105 = Suction Pit 01 and 02.
- PG-106 = not connected.

Notes:

- Vacuum and pressure data are reported in inches of water.
- Air flow data are based on measured air velocity and are reported in cubic feet per minute.
- NM = not measured
- NF = no flow as the piping associated with these measurement locations was not open/ connected at the time of measurement.

Table 3 (Continued)
Summary of Treatment System Data
Greif Facility - Tonawanda, New York
NYSDEC VCP Number V00334-9
Page 2 of 2

Location Units	Pre-Carbon			Mid-Carbon		Post-Carbon		
	Pressure " H ₂ O	Temp °F	PID ppm	Temp °F	PID ppm	Temp °F	PID ppm	Flow cfm
Date								
17-Dec-09	10.5	103	0.0	98	0.0	67	0.0	120
14-Jan-10	7.5	114	46.5	102	18.7	91	13.9	73
17-Feb-10	9.5	114	0.0	111	0.0	99	0.0	88
18-Mar-10	9.0	115	0.0	108	0.0	98	0.0	98
13-Apr-10	9.0	118	4.7	109	2.0	98	1.1	225
18-May-10	8.5	108	3.0	103	2.2	94	1.7	220
15-Jun-10	10.0	114	3.3	103	0.0	89	0.0	245
14-Jul-10	11.0	112	5.2	106	4.1	98	1.9	263
13-Aug-10	10.5	118	2.6	112	2.0	103	1.3	255
14-Sep-10	13.0	100	2.2	90	1.1	NM	0.5	461
14-Oct-10	15.5	104	0.3	104	0.0	NM	0.0	475
22-Nov-10	15.5	102	0.4	97	0.0	94	0.0	490
16-Dec-10	15.5	94	15.1	89	11.8	88	3.2	493
19-Jan-11	16.5	94	1.0	88	1.1	86	0.2	516
21-Feb-11	16	91	0.7	85	0	84	0	462
11-Mar-11	15.5	97	189	91	69.2	91	5.7	522
21-Apr-11	22.5	98	1.1	NM	0	97	0	220
24-May-11	28.5	111	6.3	NM	1.5	104	0	202.71
21-Jun-11	30	127	4.4	NM	0.7	112	0.1	181.83
21-Jul-11	41	137	0.0	NM	0.0	120	0.0	175.74
29-Aug-11	39	132	5.3	NM	0.0	121	0.0	176.61
26-Sep-11	46	132	1.1	NM	1.0	116	0.0	172.26
28-Oct-11	46	116	7	NM	4.6	99	0.0	186.18
18-Nov-11	46	124	3.4	NM	1.0	114	0.0	178.35
22-Dec-11	46	116	0.2	NM	0.0	118	0.0	185.31

Notes:

- Vacuum and pressure data are reported in inches of water.
- Air flow data are based on measured air velocity and are reported in cubic feet per minute.
- Temperature reported in degrees Fahrenheit.
- PID = photoionization detector reading reported in parts per million.
- NM = not measured