

TABLE 1

Orange County Department of Parks, Recreation and Conservation
Environmental Restoration Program Project
Glenmere Lake Property

SAMPLING SUMMARY

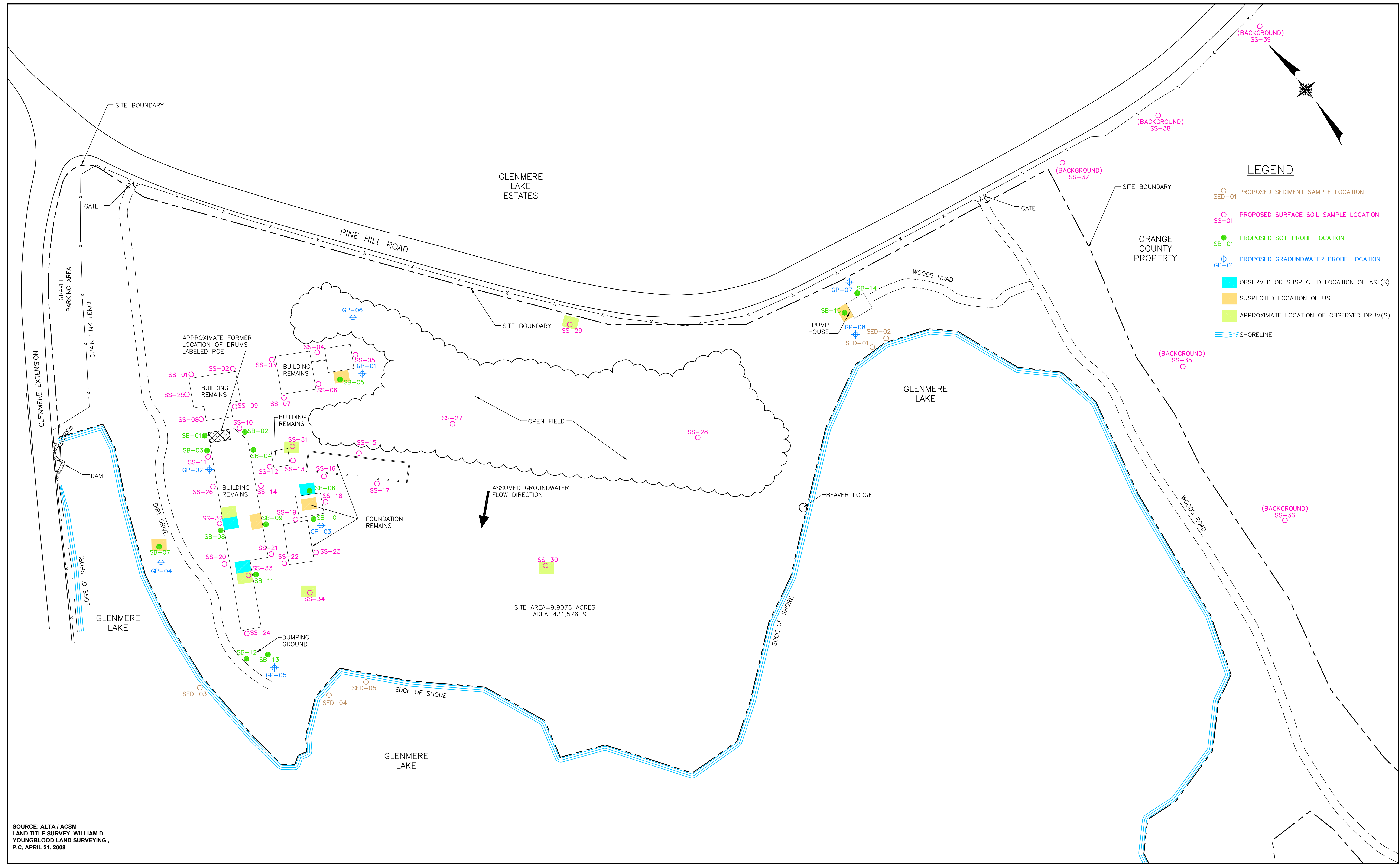
Investigation Method/Technology	Sample Point ID	No. of Samples Selected for Analysis	Analysis ¹											
			VOCs	BTEX	Chlorinated VOCs	SVOCs	PAHs	PCBs	TAL Metals	TPHs	Pesticides	Herbicides	Lead	Asbestos
Surface Soil Samples	SS-01 through SS-06 SS-09 through SS-24	22	--	--	--	--	--	--	--	--	--	--	X	X
	SS-07 and SS-08	2	X	--	--	X	--	X	X	--	X	--	--	X
	SS-25 through SS-28	4	--	--	--	--	--	--	--	--	X	X	--	--
	SS-29 through SS-34	6	X	--	--	X	--	X	X	--	X	--	--	--
	SS-35 and SS-36	2	--	--	--	--	--	--	X	--	--	--	--	X
	SS-37 through SS-39	3	--	--	--	--	--	--	--	X	--	--	--	--
Soil Probes	SB-01, SB-02 and SB-04	3	--	--	X	--	--	--	--	--	--	--	--	--
	SB-03	1	X	--	--	X	--	X	X	--	X	--	--	--
	SB-05, SB-07 through SB-11 and SB-15	7	X	--	--	X	--	X	X	X	X	--	--	--
	SB-06 and SB-14	2	--	X	--	--	X	--	--	X	--	--	--	--
	SB-12 and SB-13	2	X	--	--	X	--	X	X	X	X	--	--	X
Surface Water Sediment	SED-01 through SED-05	5	--	--	--	X	--	X	X	--	--	--	--	--
Groundwater Probes ²	GP-01 through GP-08	8	X	--	--	X	--	X	X	--	X	--	--	--

Notes:

X: Sample selected for analysis. --: Sample not selected for analysis.

¹ Analyses include Target Compound List (TCL) Volatile Organic Compounds (VOCs), BTEX and Chlorinated VOCs by EPA Method 8260. TCL Semivolatile Organic Compounds (SVOCs) by EPA Method 8270. Polycyclic Aromatic Hydrocarbons (PAHs) by EPA Method 8270. Polychlorinated Biphenyls (PCBs) by EPA Method 8082. Target Analyte List (TAL) metals and lead by EPA Method 6000/7000 Series. Total Petroleum Hydrocarbons (TPHs) by EPA Method 8015. TCL Pesticides by EPA Method 8081. TCL Herbicides by EPA Method 8151. Asbestos by Polarized Light Microscopy (PLM).

² If the turbidity during sampling is greater than 50 NTUs, then a sample must be analyzed for both total and dissolved metals.



- LEGEND**
- SED-01 PROPOSED SEDIMENT SAMPLE LOCATION
 - SS-01 PROPOSED SURFACE SOIL SAMPLE LOCATION
 - SB-01 PROPOSED SOIL PROBE LOCATION
 - ⊕ GP-01 PROPOSED GROUNDWATER PROBE LOCATION
 - OBSERVED OR SUSPECTED LOCATION OF AST(S)
 - SUSPECTED LOCATION OF UST
 - APPROXIMATE LOCATION OF OBSERVED DRUM(S)
 - SHORELINE

SOURCE: ALTA / ACSM
 LAND TITLE SURVEY, WILLIAM D.
 YOUNGBLOOD LAND SURVEYING,
 P.C., APRIL 21, 2008

NO.	DATE	REVISION	INT.

UNAUTHORIZED ALTERATION OR ADDITION TO
 THIS DOCUMENT IS A VIOLATION OF SECTION 7209
 OF THE NEW YORK STATE EDUCATION LAW.

PROJECT ENGINEER: T.F.
 DRAWN BY: A.R.S.
 DESIGNED BY: A.C.
 CHECKED BY: T.F.



ORANGE COUNTY DEPARTMENT OF PARKS
 RECREATION AND CONSERVATION
 ORANGE COUNTY NEW YORK
GLENMERE LAKE PROPERTY

SAMPLE LOCATION MAP		PROJECT NO. 2777	1
		DATE: 5/27/08	
		SCALE: 1"=40'	