



C&S Companies
141 Elm Street
Suite 100
Buffalo, NY 14203
p: (716) 847-1630
f: (716) 847-1454
www.cscos.com

March 7, 2016

Michael J. Hinton, P.E.
New York State Department of Environmental Conservation
Division of Environmental Remediation, Region 9
270 Michigan Avenue, Buffalo, NY 14203-2915

Re: Hole #6 Pilot Study Report – Westwood Golf Course, Amherst, New York

Dear Mike,

At the request of Mensch Capital Partners, LLC (Mensch), C&S Engineers, Inc. (C&S) conducted soil sampling on a portion of the Westwood County Club (Site) in Amherst New York. The Site was accepted into the Brownfield Cleanup Program on March 10, 2015. The Remedial Investigation Work Plan was accepted by the New York State Department of Environmental Conservation (NYSDEC) on October 5, 2015. Prior to the full implementation of the RI Work Plan across the entire Site, a portion of the Site was selected to evaluate soil conditions and help determine if the proposed approach to the RI is appropriate. A Pilot Study was conducted on the green, fairway, rough and tee of Hole #6. This letter report describes the results of the Pilot Study.

I. SITE DESCRIPTION

The 170-acre Site is located at 772 North Forest Road, 385 Maple Road and 391 Maple Road in the south-central portion of the Town of Amherst, Erie County, New York. The Site is bounded by Sheridan Drive (State Route 324) on the south; Maple Road (County Road 192) on the north; North Forest Road (County Road 294), Ellicott Creek, and the Audubon Par 3 Golf Course on the east; and Frankhauser Road and Fairways Boulevard on the west.

The Site is relatively flat with some minor topographic relief commonly associated with golf courses. The Site's fairways, greens, and rough remain visible although the Site has not been maintained as a golf course since 2014.

The Pilot Study was conducted on Hole #6 located north of the Grounds Maintenance Buildings. The Hole #6 pilot study area consists of the green, tee box, fairway and adjacent rough areas. The Pilot Study area occupies approximately 10 acres of the 170-acre Westwood Site. Figure 1 shows the location of the pilot study on the Westwood Site.

II. SAMPLING METHODS

C&S conducted the pilot study on October 19 and 20, 2015. TREC Environmental, Inc. was contracted to drill 56 soil borings from ground surface to approximately 4 feet below ground surface (bgs). Drilling was conducted using a track mounted Geo-probe drilling unit. Each boring location was sampled to four feet using a one-inch by four-foot steel sampling tube fitted with a disposable acetate liner. All non-disposable sampling equipment was decontaminated between drilling locations to avoid potential cross contamination of samples.

Figure 2 Sample Locations shows the locations that were drilled for this pilot study.

Material description and physical evidence of contamination (staining or sheen) of each direct-push sample was recorded on soil boring logs provided in *Appendix A*.

The RI Work Plan included two sampling grids for the Site. For the green, fairway and tee box borings were spaced across a 50-foot by 50-foot grid. A 200-foot by 200-foot grid was used for the rough areas surrounding the green, fairway and tee box.

From each sampling location, five soil samples were collected from the following depth intervals:

- 0 to 2 inches below grade
- 2 to 6 inches below grade
- 6 to 12 inches below grade
- 12 to 18 inches below grade
- 18 to 24 inches below grade

All sample intervals were analyzed for arsenic (EPA Method 6010). Additionally, four sample locations were selected, one each from the tee, green, fairway and rough areas, for testing of all analytes listed in NYSDEC 6NYCRR 375-6.8 tables (referred to as “complete list”). The complete list includes the following parameters:

<i>Analytes</i>	<i>EPA Method</i>
Target Compound List (TCL) volatile organic compounds (VOCs)	8260
TCL semi-volatile organic compounds (SVOCs)	8270
TCL pesticides	8081A
Polychlorinated biphenyls (PCBs)	8082
Target Analyte List (TAL) metals	6010
Total cyanide	9010B
Hexavalent chromium	7196A

All five sample intervals from each grid location were sent to the laboratory. Initially, only the 0- to 2-inch and 2- to 6-inch intervals were analyzed. If the 2 to 6-inch interval contained arsenic concentrations above the Unrestricted Soil Cleanup Objectives (SCOs), the next sample interval below that was analyzed, and the process was repeated until arsenic concentrations were below Unrestricted Use SCOs. Complete list samples follow this same analysis program.

A total of 20 Quality Assurance/Quality Control (QA/QC) samples were collected. Ten Matrix Spike/Matrix Spike Duplicate (MS/MSD) and ten blind duplicates were submitted to the laboratory.

The laboratory results for the samples were reported in a Category B deliverables package to facilitate validation of the data, and a third party validator will review the laboratory data and prepare a Data Usability Summary Report (DUSR). The DUSR has not yet been completed for these samples.

Table 1: Soil Sampling Program summarizes samples collected from each grid location.

III. SAMPLING RESULTS

Pilot Study surface soils generally consist of silty clay loam, and the upper two inches of soil in the greens also contained trace amounts of fine sand. Subsurface soils are predominately brown dense clay with organic matter. No petroleum odors or visual evidence of contamination were observed in the samples.

A total of 274 soil samples were collected and sent to the laboratory from the green, fairway, rough and tee box. The first two intervals were analyzed by the laboratory. As described in the approved Work Plan, if metal concentrations exceeded Unrestricted SCOs the next sample intervals was analyzed. If metal concentrations were below Unrestricted use, no deeper samples were analyzed. From the 274 soil samples collected from the Site, a total of 138 soil samples were analyzed by the laboratory. Tables 2 and 3 summarize the laboratory results and compares these results to NYSDEC SCOs and Table 4 presents only those analytes that were detected at concentrations above the Unrestricted Use SCOs in at least one sample.

Based on analytical results, only concentrations of metals exceeded the SCOs, as no VOCs, SVOCs, pesticides, herbicides or PCBs were detected at concentrations above Unrestricted Use SCOs. The sample results from each area of Hole #6 are discussed below:

Green

- Four borings were advanced beyond the depth of 2-6 inches in this area.
- Arsenic was detected below Unrestricted Use SCOs in all four borings at the 0-2 inch interval.
- Arsenic was detected above Industrial Use SCO (16 mg/kg) in the 2-6 inch and 6-12 inch intervals at all four locations in the green. Arsenic concentrations ranged between 20.4 and 251 mg/kg, with the highest concentrations detected in the 2-6 inch interval samples. Arsenic was detected below Unrestricted Use SCOs in the underlying 12-18 inch intervals.
- Grid location T1-71 was selected for the complete analysis.
 - Mercury was detected in T1-71 above Industrial Use SCO to a depth of 12 inches, above the Unrestricted Use SCO in the 12-18 inch interval, and below the Unrestricted Use SCO in the 18 to 24 inch interval.
 - Copper was detected slightly above the Unrestricted Use SCO in the 0-2 inch sample interval.

Fairway

- Out of the 36 locations in the fairway only two locations, P1-64 and S1-70, contained concentrations of arsenic slightly exceeding the Unrestricted Use SCO.
 - P1-64 contained arsenic at 13.1 mg/kg in the 2-6 inch interval. The Unrestricted Use SCO is 13 mg/kg.
 - S1-70 contained arsenic at 14.1 mg/kg in the 0-2 inch interval. The concentration in the next interval (2-6 inches) was below Unrestricted Use SCO for arsenic.



- Grid location P1-65 was selected for the complete analysis.
 - Cadmium was detected above Commercial Use SCO (9.3 mg/kg) at 16.5 mg/kg. The underlying sample (2-6 inch interval) was below the Unrestricted Use SCO.
 - Trivalent chromium was detected above Restricted Residential at the 0-2 inch interval, above Residential Use in 2-6 inch interval, and below the Unrestricted Use SCO in the 6-12 inch interval.
 - Lead, mercury and zinc were detected above Unrestricted Use SCOs in the 0-2 inch interval only.

Rough

- Out of the 13 locations selected for the Pilot Study, no sample concentrations exceeded the Unrestricted Use SCO for arsenic.
- Grid location K1-62 was selected for the complete analysis. Only one analyte exceeded the SCOs:
 - K1-62 exceeded the Unrestricted Use SCO for trivalent chromium at 0-2 inch. Chromium concentrations were below the Unrestricted Use SCOs at 2-6 inch interval.

Tee Box

- Arsenic concentrations were below the SCOs in three of the four samples. Arsenic was detected above the Industrial Use SCO in the 0-2, 2-6 and 6-12 inch intervals in H1-47. Arsenic concentrations ranged between 20.2 and 92 mg/kg, and were highest in the uppermost samples. Arsenic concentrations were below Unrestricted Use SCO in 18-24 inch interval at this location.
- Grid location H1-48 was selected for the complete analysis.
 - Cadmium (0-2 inch) and mercury (0-2 and 2-6 inch) were detected above the Restricted Residential Use SCOs, and the mercury concentration was also above the Unrestricted Use SCO in the 6-12 inch interval.
 - Trivalent chromium (0-2 inch) was detected above Residential Use SCO.

IV. FINDINGS AND CONCLUSIONS

Although pesticides and herbicides were not detected in soils, the Pilot Study identified the presence of a number of metals in soils at concentrations above the NYSDEC SCOs. The detected metal concentrations above Unrestricted SCOs included arsenic, cadmium, copper, lead, mercury, trivalent chromium, and zinc. More specifically:

- Arsenic and mercury were encountered at the greatest depths (12-18 inches) and in the highest concentrations (in excess of Industrial SCOs) in the tee and green samples, and in lower concentrations (in excess of Unrestricted SCOs) in the fairway samples.

- Trivalent chromium was encountered at depths 2-6 inches below the surface in the tee and fairway samples and at levels in excess of Restricted Residential SCOs, while only encountered at depths 0-2 inches and in excess of Unrestricted SCOs in the rough sample.
- Cadmium was encountered at depths 0-2 inches below the surface in the tee and fairway samples and at levels in excess of Restricted Residential SCOs.
- Copper, lead and zinc were only encountered at depths 0-2 inches below the surface and at levels in excess of Unrestricted SCOs. Lead and zinc were identified in the fairway samples, while copper was identified in the green sample.

The presence of these metals is consistent with the historic use of pesticides, herbicides, and fungicides at the Site. Although these metals are no longer commonly used in pesticides, herbicides, and fungicides, these metals once formed the basis for these products. The general presence of higher concentrations in the tee boxes and greens corroborates expectations and appears to be indicative of more concentrated maintenance of these closely manicured portions of the golf course. The general lack of elevated concentrations of metals in the 'rough' areas also corroborates the hypothesis that these areas were less well maintained and therefore received fewer or no applications of pesticides, herbicides, and fungicides. As expected, the concentrations of metals in fairway samples were lower, generally falling in concentration between the 'rough' area samples and the tees and green samples.

It is important to note the findings related to the newly detected metals, the metals other than arsenic, are based on limited sampling and may require additional remedial site investigation. As such, C&S respectfully requests a meeting with the NYSDEC to review the Pilot Study results prior to implementation of the RI of the remainder of the Site. The purpose of the proposed meeting is to discuss the implications of the Pilot Study findings on the RI Work Plan, to determine what if any additional remedial site investigation would be appropriate in the Pilot Study area, and to determine the most appropriate next steps to further the implementation of the RI Work Plan.

Please feel free to contact me at (716) 847-1630 at your earliest convenience if you have any questions or comments.

Sincerely,

C&S ENGINEERS, INC.

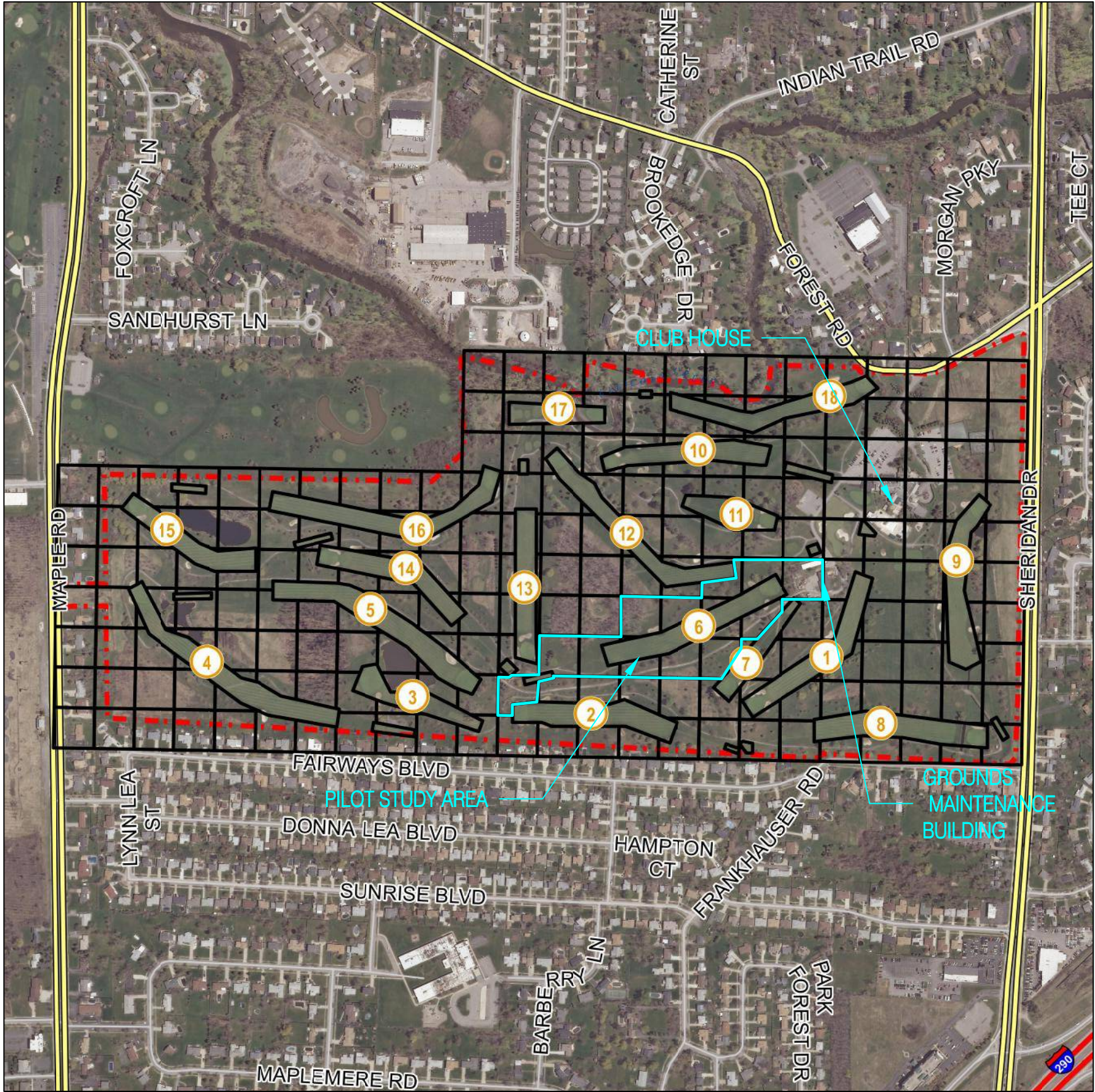


Daniel E. Riker, P.G.
Managing Geologist

cc: Brad Packard, Ciminelli Real Estate Corporation
Andrew J. Shaevel, Mensch Capital Partners, LLC

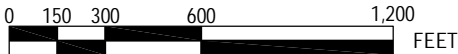
FIGURES

F:\Project\076 - Mensch Capital Partners\076001001 - Westwood Sampling\Planning Study\CADD\Sheet Files\FIGURE 1 PILOT STUDY SITE LOCATION.dwg

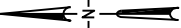


LEGEND

- PROPERTY LINE
- GOLF COURSE HOLE NUMBER
- PILOT STUDY AREA
- 200 x 200 FOOT SAMPLE GRID



C&S Engineers, Inc.
141 Elm Street.
Buffalo, New York 14203
Phone: 716-847-1630
Fax: 716-847-1454
www.cscos.com

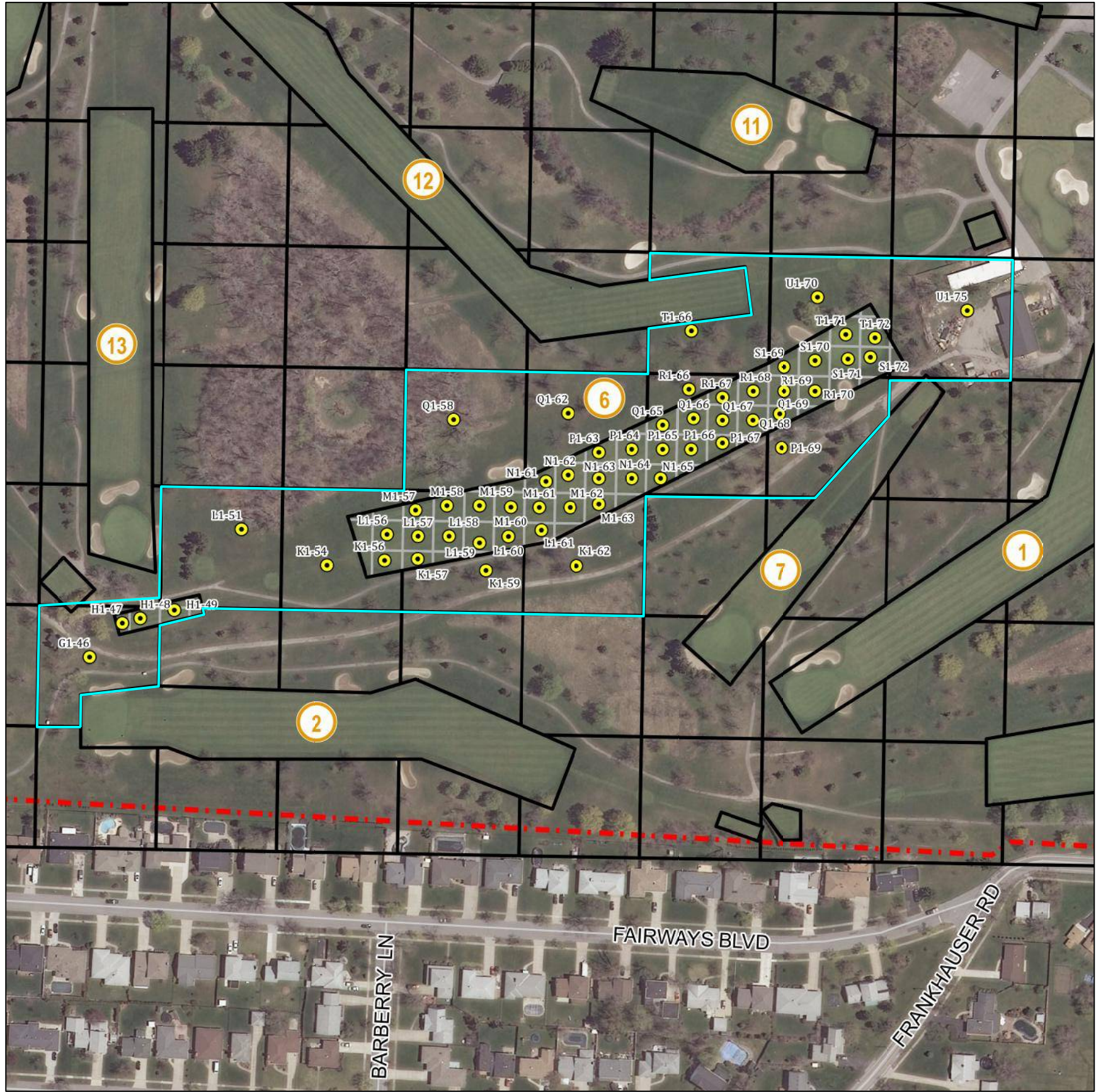


WESTWOOD COUNTRY CLUB
BROWNFIELD CLEANUP PROGRAM
HOLE #6 PILOT STUDY
AMHERST, NEW YORK

PILOT STUDY

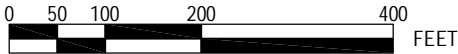
FIGURE 1

F:\Project\076 - Mensch Capital Partners\076001001 - Westwood Sampling\Planning\Study\CADD\Sheet Files\FIGURE 1 PILOT STUDY SAMPLE LOCATIONS.dwg

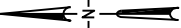


LEGEND

- PROPERTY LINE
- GOLF COURSE HOLE NUMBER
- PILOT STUDY AREA
- 50 x 50 FOOT SAMPLE GRID
- 200 x 200 FOOT SAMPLE GRID
- SOIL BORING LOCATION



C&S Engineers, Inc.
141 Elm Street.
Buffalo, New York 14203
Phone: 716-847-1630
Fax: 716-847-1454
www.cscos.com



WESTWOOD COUNTRY CLUB
BROWNFIELD CLEANUP PROGRAM
HOLE #6 PILOT STUDY
AMHERST, NEW YORK

PILOT STUDY
SAMPLE LOCATIONS

FIGURE 2

TABLES

**TABLE 1: SOIL SAMPLING PROGRAM
WESTWOOD PILOT STUDY
772 NORTH FOREST ROAD
AMHERST, NEW YORK**

<u>Boring ID</u>	<u>Arsenic Samples</u>	<u>Arsenic Samples to take and HOLD</u>	<u>Additional</u>
200 FOOT GRID			
G1-46	0-2; 2-6	6-12; 12-18; 18-24	
L1-51	0-2; 2-6	6-12; 12-18; 18-24	
K1-54	0-2 + MS/MSD; 2-6	6-12; 12-18; 18-24	
K1-59	0-2 + DUP-A; 2-6	6-12; 12-18; 18-24	
K1-62	0-2; 2-6	6-12; 12-18; 18-24	Complete List (0-2)
K1-67	0-2; 2-6	6-12; 12-18; 18-24	
Q1-58	0-2; 2-6	6-12; 12-18; 18-24	
Q1-62	0-2; 2-6	6-12; 12-18; 18-24	
R1-66	0-2+ MS/MSD; 2-6	6-12; 12-18; 18-24	
T1-66	0-2 + DUP-B; 2-6	6-12; 12-18; 18-24	
P1-69	0-2; 2-6	6-12; 12-18; 18-24	
U1-70	0-2; 2-6	6-12; 12-18; 18-24	
U1-75	0-2; 2-6	6-12; 12-18; 18-24	
50 FOOT GRID			
H1-47	0-2+ MS/MSD; 2-6	6-12; 12-18; 18-24	
H1-48	0-2; 2-6	6-12; 12-18; 18-24	Complete List (0-2) +MS/MSD
H1-49	0-2 + DUP-C ; 2-6	6-12; 12-18; 18-24	
K1-56	0-2; 2-6	6-12; 12-18; 18-24	
K1-57	0-2; 2-6	6-12; 12-18; 18-24	
L1-56	0-2; 2-6	6-12; 12-18; 18-24	
L1-57	0-2; 2-6	6-12; 12-18; 18-24	
L1-58	0-2+ MS/MSD; 2-6	6-12; 12-18; 18-24	
L1-59	0-2+ DUP-D; 2-6	6-12; 12-18; 18-24	
L1-60	0-2; 2-6	6-12; 12-18; 18-24	
L1-61	0-2; 2-6	6-12; 12-18; 18-24	
M1-57	0-2; 2-6	6-12; 12-18; 18-24	
M1-58	0-2; 2-6	6-12; 12-18; 18-24	
M1-59	0-2; 2-6	6-12; 12-18; 18-24	
M1-60	0-2; 2-6	6-12; 12-18; 18-24	
M1-61	0-2; 2-6	6-12; 12-18; 18-24	
M1-62	0-2; 2-6	6-12; 12-18; 18-24	
M1-63	0-2+ MS/MSD; 2-6	6-12; 12-18; 18-24	
N1-61	0-2 + DUP-E; 2-6	6-12; 12-18; 18-24	
N1-62	0-2; 2-6	6-12; 12-18; 18-24	
N1-63	0-2; 2-6	6-12; 12-18; 18-24	
N1-64	0-2; 2-6	6-12; 12-18; 18-24	
N1-65	0-2; 2-6	6-12; 12-18; 18-24	
P1-63	0-2 + MS/MSD; 2-6	6-12; 12-18; 18-24	
P1-64	0-2+ DUP-F; 2-6	6-12; 12-18; 18-24	
P1-65	0-2; 2-6	6-12; 12-18; 18-24	Complete List (0-2) + DUP-J
P1-66	0-2; 2-6	6-12; 12-18; 18-24	
P1-67	0-2; 2-6	6-12; 12-18; 18-24	
Q1-65	0-2; 2-6	6-12; 12-18; 18-24	
Q1-66	0-2; 2-6	6-12; 12-18; 18-24	
Q1-67	0-2+ MS/MSD; 2-6	6-12; 12-18; 18-24	
Q1-68	0-2 + DUP-G; 2-6	6-12; 12-18; 18-24	
Q1-69	0-2; 2-6	6-12; 12-18; 18-24	
R1-67	0-2; 2-6	6-12; 12-18; 18-24	
R1-68	0-2; 2-6	6-12; 12-18; 18-24	
R1-69	0-2; 2-6	6-12; 12-18; 18-24	
R1-70	0-2 + MS/MSD; 2-6	6-12; 12-18; 18-24	
S1-69	0-2 + DUP-H; 2-6	6-12; 12-18; 18-24	
S1-70	0-2; 2-6	6-12; 12-18; 18-24	
S1-71	0-2 + MS/MSD; 2-6	6-12; 12-18; 18-24	
S1-72	0-2 + DUP-I; 2-6	6-12; 12-18; 18-24	
T1-71	0-2; 2-6	6-12; 12-18; 18-24	Complete List (0-2)
T1-72	0-2; 2-6	6-12; 12-18; 18-24	

Rough
Tee
Fairway
Green

MS/MSD - Matrix Spike/Matrix Spike Duplicate

DUP - Field Duplicate

Complete List - Analytes from NYSDEC 6 NYCRR Part 375 Table 375-6.8(a and b)

TABLE 2: SOIL SAMPLE RESULTS - ARSENIC
WESTWOOD PILOT STUDY
772 NORTH FOREST ROAD
AMHERST, NEW YORK

NYSDEC Soil Cleanup Objective					Arsenic	
					Industrial	16.0 mg/kg
					Commercial	16.0 mg/kg
					Restricted Residential	16.0 mg/kg
					Residential	16.0 mg/kg
					Unrestricted	13.0 mg/kg
Field Sample ID	Sample Depth	Sample Matrix	Date Sampled	Units		
Green						
SO-S1-71-0-2in	0 - 2	SO	10/19/2015	mg/kg	2.3	J
SO-S1-71-2-6in	2 - 6	SO	10/19/2015	mg/kg	105	
SO-S1-71-6-12in	6 - 12	SO	10/19/2015	mg/kg	16.4	
SO-S1-71-12-18in	12 - 18	SO	10/19/2015	mg/kg	3.9	
SO-S1-72-0-2in	0 - 2	SO	10/19/2015	mg/kg	5.2	
SO-S1-72-2-6in	2 - 6	SO	10/19/2015	mg/kg	209	
SO-S1-72-6-12in	6 - 12	SO	10/19/2015	mg/kg	151	
SO-S1-72-12-18in	12 - 18	SO	10/19/2015	mg/kg	6.7	
SO-T1-71-0-2in	0 - 2	SO	10/19/2015	mg/kg	9.8	
SO-T1-71-2-6in	2 - 6	SO	10/19/2015	mg/kg	251	
SO-T1-71-6-12in	6 - 12	SO	10/19/2015	mg/kg	70.9	
SO-T1-71-12-18in	12 - 18	SO	10/19/2015	mg/kg	3.7	
SO-T1-72-0-2in	0 - 2	SO	10/19/2015	mg/kg	5.1	
SO-T1-72-2-6in	2 - 6	SO	10/19/2015	mg/kg	229	
SO-T1-72-6-12in	6 - 12	SO	10/19/2015	mg/kg	20.4	
SO-T1-72-12-18in	12 - 18	SO	10/19/2015	mg/kg	5.7	
Fairway						
SO-K1-56-0-2in	0 - 2	SO	10/20/2015	mg/kg	5	
SO-K1-56-2-6in	2 - 6	SO	10/20/2015	mg/kg	7	
SO-K1-57-0-2in	0 - 2	SO	10/20/2015	mg/kg	7.6	
SO-K1-57-2-6in	2 - 6	SO	10/20/2015	mg/kg	6.3	
SO-L1-56-0-2in	0 - 2	SO	10/20/2015	mg/kg	5.7	
SO-L1-56-2-6in	2 - 6	SO	10/20/2015	mg/kg	3.8	
SO-L1-57-0-2in	0 - 2	SO	10/20/2015	mg/kg	6.1	
SO-L1-57-2-6in	2 - 6	SO	10/20/2015	mg/kg	5.5	
SO-L1-58-0-2in	0 - 2	SO	10/20/2015	mg/kg	9.5	
SO-L1-58-2-6in	2 - 6	SO	10/20/2015	mg/kg	7.4	
SO-L1-59-0-2in	0 - 2	SO	10/20/2015	mg/kg	7.3	
SO-L1-59-2-6in	2 - 6	SO	10/20/2015	mg/kg	4.8	
SO-L1-60-0-2in	0 - 2	SO	10/20/2015	mg/kg	5.3	
SO-L1-60-2-6in	2 - 6	SO	10/20/2015	mg/kg	12.7	
SO-L1-61-0-2in	0 - 2	SO	10/20/2015	mg/kg	6.7	
SO-L1-61-2-6in	2 - 6	SO	10/20/2015	mg/kg	7.1	
SO-M1-57-0-2in	0 - 2	SO	10/20/2015	mg/kg	11.7	
SO-M1-57-2-6in	2 - 6	SO	10/20/2015	mg/kg	7.8	
SO-M1-58-0-2in	0 - 2	SO	10/20/2015	mg/kg	5.6	
SO-M1-58-2-6in	2 - 6	SO	10/20/2015	mg/kg	3.9	
SO-M1-59-0-2in	0 - 2	SO	10/20/2015	mg/kg	6.6	
SO-M1-59-2-6in	2 - 6	SO	10/20/2015	mg/kg	6	
SO-M1-60-0-2in	0 - 2	SO	10/20/2015	mg/kg	4.4	J
SO-M1-60-2-6in	2 - 6	SO	10/20/2015	mg/kg	12	
SO-M1-61-0-2in	0 - 2	SO	10/19/2015	mg/kg	8.6	
SO-M1-61-2-6in	2 - 6	SO	10/19/2015	mg/kg	6.5	
SO-M1-62-0-2in	0 - 2	SO	10/20/2015	mg/kg	6.4	
SO-M1-62-2-6in	2 - 6	SO	10/20/2015	mg/kg	7	
SO-M1-63-0-2in	0 - 2	SO	10/20/2015	mg/kg	6.1	
SO-M1-63-2-6in	2 - 6	SO	10/20/2015	mg/kg	6.9	
SO-N1-61-0-2in	0 - 2	SO	10/19/2015	mg/kg	6.4	
SO-N1-61-2-6in	2 - 6	SO	10/19/2015	mg/kg	7.6	
SO-N1-62-0-2in	0 - 2	SO	10/20/2015	mg/kg	11.1	
SO-N1-62-2-6in	2 - 6	SO	10/20/2015	mg/kg	7.4	
SO-N1-63-0-2in	0 - 2	SO	10/20/2015	mg/kg	9.7	
SO-N1-63-2-6in	2 - 6	SO	10/20/2015	mg/kg	5.5	
SO-N1-64-0-2in	0 - 2	SO	10/19/2015	mg/kg	9.6	
SO-N1-64-2-6in	2 - 6	SO	10/19/2015	mg/kg	6.5	
SO-N1-65-0-2in	0 - 2	SO	10/19/2015	mg/kg	8.6	
SO-N1-65-2-6in	2 - 6	SO	10/19/2015	mg/kg	2.5	
SO-P1-63-0-2in	0 - 2	SO	10/19/2015	mg/kg	6.4	
SO-P1-63-2-6in	2 - 6	SO	10/19/2015	mg/kg	5.4	
SO-P1-64-0-2in	0 - 2	SO	10/19/2015	mg/kg	12.6	
SO-P1-64-2-6in	2 - 6	SO	10/19/2015	mg/kg	13.1	
SO-P1-65-0-2in	0 - 2	SO	10/19/2015	mg/kg	7.8	
SO-P1-65-2-6in	2 - 6	SO	10/19/2015	mg/kg	7.4	

TABLE 2: SOIL SAMPLE RESULTS - ARSENIC
WESTWOOD PILOT STUDY
772 NORTH FOREST ROAD
AMHERST, NEW YORK

					Arsenic	
					NYSDEC Soil Cleanup Objective	
					Industrial	16.0 mg/kg
					Commercial	16.0 mg/kg
					Restricted Residential	16.0 mg/kg
					Residential	16.0 mg/kg
					Unrestricted	13.0 mg/kg
Field Sample ID	Sample Depth	Sample Matrix	Date Sampled	Units		
SO-P1-65-6-12in	6 - 12	SO	10/19/2015	mg/kg	3.1	J
SO-P1-66-0-2in	0 - 2	SO	10/19/2015	mg/kg	8.9	
SO-P1-66-2-6in	2 - 6	SO	10/19/2015	mg/kg	6.4	
SO-P1-67-0-2in	0 - 2	SO	10/19/2015	mg/kg	6.6	
SO-P1-67-2-6in	2 - 6	SO	10/19/2015	mg/kg	8	
SO-Q1-65-0-2in	0 - 2	SO	10/19/2015	mg/kg	8.2	
SO-Q1-65-2-6in	2 - 6	SO	10/19/2015	mg/kg	7.3	
SO-Q1-66-0-2in	0 - 2	SO	10/19/2015	mg/kg	8	
SO-Q1-66-2-6in	2 - 6	SO	10/19/2015	mg/kg	5	
SO-Q1-67-0-2in	0 - 2	SO	10/19/2015	mg/kg	8.5	
SO-Q1-67-2-6in	2 - 6	SO	10/19/2015	mg/kg	8	
SO-Q1-68-0-2in	0 - 2	SO	10/19/2015	mg/kg	6.8	
SO-Q1-68-2-6in	2 - 6	SO	10/19/2015	mg/kg	7.1	
SO-Q1-69-0-2in	0 - 2	SO	10/19/2015	mg/kg	6.5	
SO-Q1-69-2-6in	2 - 6	SO	10/19/2015	mg/kg	7.3	
SO-R1-67-0-2in	0 - 2	SO	10/19/2015	mg/kg	6.6	
SO-R1-67-2-6in	2 - 6	SO	10/19/2015	mg/kg	8.5	
SO-R1-68-0-2in	0 - 2	SO	10/19/2015	mg/kg	8.8	
SO-R1-68-2-6in	2 - 6	SO	10/19/2015	mg/kg	8.1	
SO-R1-69-0-2in	0 - 2	SO	10/19/2015	mg/kg	3.1	J
SO-R1-69-2-6in	2 - 6	SO	10/19/2015	mg/kg	5.9	
SO-R1-70-0-2in	0 - 2	SO	10/19/2015	mg/kg	8.6	
SO-R1-70-2-6in	2 - 6	SO	10/19/2015	mg/kg	7.7	
SO-S1-69-0-2in	0 - 2	SO	10/19/2015	mg/kg	8.8	
SO-S1-69-2-6in	2 - 6	SO	10/19/2015	mg/kg	7	
SO-S1-70-0-2in	0 - 2	SO	10/19/2015	mg/kg	14.1	
SO-S1-70-2-6in	2 - 6	SO	10/19/2015	mg/kg	6.8	
Rough						
SO-G1-46-0-2in	0 - 2	SO	10/20/2015	mg/kg	6.4	
SO-G1-46-2-6in	2 - 6	SO	10/20/2015	mg/kg	6	
SO-K1-54-0-2in	0 - 2	SO	10/20/2015	mg/kg	10.4	
SO-K1-54-2-6in	2 - 6	SO	10/20/2015	mg/kg	6.4	
SO-K1-59-0-2in	0 - 2	SO	10/20/2015	mg/kg	6.5	
SO-K1-59-2-6in	2 - 6	SO	10/20/2015	mg/kg	4.5	
SO-K1-62-0-2in	0 - 2	SO	10/20/2015	mg/kg	8.1	
SO-K1-62-2-6in	2 - 6	SO	10/20/2015	mg/kg	6.6	
SO-K1-67-0-2in	0 - 2	SO	10/20/2015	mg/kg	8.5	
SO-K1-67-2-6in	2 - 6	SO	10/20/2015	mg/kg	6.9	
SO-L1-51-0-2in	0 - 2	SO	10/20/2015	mg/kg	5.4	
SO-L1-51-2-6in	2 - 6	SO	10/20/2015	mg/kg	4.8	
SO-P1-69-0-2in	0 - 2	SO	10/20/2015	mg/kg	4.2	
SO-P1-69-2-6in	2 - 6	SO	10/20/2015	mg/kg	7.1	
SO-Q1-58-0-2in	0 - 2	SO	10/20/2015	mg/kg	3.6	
SO-Q1-58-2-6in	2 - 6	SO	10/20/2015	mg/kg	2.5	J
SO-Q1-62-0-2in	0 - 2	SO	10/20/2015	mg/kg	6.3	
SO-Q1-62-2-6in	2 - 6	SO	10/20/2015	mg/kg	7.1	
SO-R1-66-0-2in	0 - 2	SO	10/20/2015	mg/kg	7.1	
SO-R1-66-2-6in	2 - 6	SO	10/20/2015	mg/kg	8.7	
SO-T1-66-0-2in	0 - 2	SO	10/20/2015	mg/kg	7.3	
SO-T1-66-2-6in	2 - 6	SO	10/20/2015	mg/kg	6.1	
SO-U1-70-0-2in	0 - 2	SO	10/20/2015	mg/kg	7.5	
SO-U1-70-2-6in	2 - 6	SO	10/20/2015	mg/kg	7.8	
SO-U1-75-0-2in	0 - 2	SO	10/20/2015	mg/kg	3.8	
SO-U1-75-2-6in	2 - 6	SO	10/20/2015	mg/kg	1.1	J
Tee Box						
SO-H1-47-0-2in	0 - 2	SO	10/20/2015	mg/kg	92.1	
SO-H1-47-2-6in	2 - 6	SO	10/20/2015	mg/kg	78.1	
SO-H1-47-6-12in	6 - 12	SO	10/20/2015	mg/kg	27.1	
SO-H1-47-12-18in	12 - 18	SO	10/20/2015	mg/kg	20.2	
SO-H1-47-18-24in	18 - 24	SO	10/20/2015	mg/kg	8.9	
SO-H1-48-0-2in	0 - 2	SO	10/20/2015	mg/kg	8.5	
SO-H1-48-2-6in	2 - 6	SO	10/20/2015	mg/kg	7.4	
SO-H1-49-0-2in	0 - 2	SO	10/20/2015	mg/kg	8.2	
SO-H1-49-2-6in	2 - 6	SO	10/20/2015	mg/kg	5.3	

TABLE 3: SOIL SAMPLE RESULTS - COMPLETE LIST
WESTWOOD PILOT STUDY
772 NORTH FOREST ROAD
AMHERST, NEW YORK

						Tee Box				Fairway				Rough Area		Green						
Field Sample ID						SO-H1-48-0-2in	SO-H1-48-2-6in	SO-H1-48-6-12in	SO-H1-48-12-18in	SO-P1-65-0-2in	SO-P1-65-2-6in	SO-P1-65-6-12in	SO-K1-62-0-2in	SO-K1-62-2-6in	SO-T1-71-0-2in	SO-T1-71-2-6in	SO-T1-71-6-12in	SO-T1-71-12-18in	SO-T1-71-18-24in			
Sample Depth						0 - 2	2 - 6	6 - 12	12 - 18	0 - 2	2 - 6	6 - 12	0 - 2	2 - 6	0 - 2	2 - 6	6 - 12	12 - 18	18 - 24			
Date Sampled						10/20/2015	10/20/2015	10/20/2015	10/20/2015	10/19/2015	10/19/2015	10/19/2015	10/20/2015	10/20/2015	10/19/2015	10/19/2015	10/19/2015	10/19/2015	10/19/2015			
Sample Matrix						SO	SO	SO	SO	SO	SO	SO	SO	SO	SO	SO	SO	SO	SO			
Units						mg/kg	mg/kg	mg/kg	mg/kg	mg/kg	mg/kg	mg/kg	mg/kg	mg/kg	mg/kg	mg/kg	mg/kg	mg/kg	mg/kg			
NYSDEC Soil Cleanup Objective																						
Parameter	Unrestricted	Residential	Restricted Residential	Commercial	Industrial																	
Metals																						
Arsenic	13.0 mg/kg	16.0 mg/kg	16.0 mg/kg	16.0 mg/kg	16.0 mg/kg	8.5	7.4			7.8	7.4	3.1	J	8.1	6.6	9.8	251	70.9	3.7			
Barium	350.0 mg/kg	350.0 mg/kg	400.0 mg/kg	400.0 mg/kg	10000.0 mg/kg	61.9				79.5		80.4		83.9		18.7	J					
Beryllium	7.2 mg/kg	14.0 mg/kg	72.0 mg/kg	590.0 mg/kg	2700.0 mg/kg	0.43	J			0.55	J	0.51		0.75	ND< 0.31	U						
Cadmium	2.5 mg/kg	2.5 mg/kg	4.3 mg/kg	9.3 mg/kg	60.0 mg/kg	9.2				16.5	0.65	J	ND< 0.53	U	ND< 0.48	U	2.5	1.5				
Chromium, Hexavalent	1.0 mg/kg	22.0 mg/kg	110.0 mg/kg	400.0 mg/kg	800.0 mg/kg	ND< 1.3	U,F			ND< 1.4	U		ND< 1.1	U		ND< 1.1	U					
Chromium, Total	30.0 mg/kg	36.0 mg/kg	180.0 mg/kg	1500.0 mg/kg	6800.0 mg/kg	74.4	F1	63.2	13.4	195	38.4	21.4		32.6	27.7	27.6						
Copper	50.0 mg/kg	270.0 mg/kg	270.0 mg/kg	270.0 mg/kg	10000.0 mg/kg	23.2				27.6		3.7	J	18.9		76.4						
Cyanide	27.0 mg/kg	27.0 mg/kg	27.0 mg/kg	27.0 mg/kg	10000.0 mg/kg	0.34				0.82				0.27		0.18						
Lead	63.0 mg/kg	400.0 mg/kg	400.0 mg/kg	1000.0 mg/kg	3900.0 mg/kg	51.6				65.3	24.4	12.3		38.7		49						
Manganese	1600.0 mg/kg	2000.0 mg/kg	2000.0 mg/kg	10000.0 mg/kg	10000.0 mg/kg	406				267		284		209		671						
Mercury	0.18 mg/kg	0.81 mg/kg	0.81 mg/kg	2.8 mg/kg	5.7 mg/kg	2.3		2.1	0.36	H	0.15	H	0.48		0.18		44.9	21.9	0.22	H	0.058	H
Nickel	30.0 mg/kg	140.0 mg/kg	310.0 mg/kg	310.0 mg/kg	10000.0 mg/kg	16.7				19.4		11		21.3		3.4	J					
Selenium	3.9 mg/kg	36.0 mg/kg	180.0 mg/kg	1500.0 mg/kg	6800.0 mg/kg	ND< 1.7	U			2.7	J	ND< 1.8	U	ND< 1.6	U	ND< 1.3	U					
Silver	2.0 mg/kg	36.0 mg/kg	180.0 mg/kg	1500.0 mg/kg	6800.0 mg/kg	0.59	J			1.8	J	ND< 0.45	U	ND< 0.41	U	0.33	J					
Zinc	109.0 mg/kg	2200.0 mg/kg	10000.0 mg/kg	10000.0 mg/kg	10000.0 mg/kg	102				126		66.7		98.1		73.4						
PCBs / Pesticides																						
Semi-volatile Organic Compounds																						
Benzo(A)Anthracene	1.0 mg/kg	1.0 mg/kg	1.0 mg/kg	5.6 mg/kg	11.0 mg/kg	0.1				0.054	J		0.046	J	ND< 0.0360	U						
Benzo(A)Pyrene	1.0 mg/kg	1.0 mg/kg	1.0 mg/kg	1.0 mg/kg	1.1 mg/kg	0.11				0.059			0.046	J		0.025	J					
Benzo(B)Fluoranthene	1.0 mg/kg	1.0 mg/kg	1.0 mg/kg	5.6 mg/kg	11.0 mg/kg	0.16				ND< 0.0220	U		0.067		ND< 0.0170	U						
Benzo(G,H,I)Perylene	100.0 mg/kg	100.0 mg/kg	100.0 mg/kg	500.0 mg/kg	1000.0 mg/kg	0.12	J			0.062	J		0.042	J		0.033	J					
Benzo(K)Fluoranthene	0.8 mg/kg	1.0 mg/kg	3.9 mg/kg	56.0 mg/kg	110.0 mg/kg	0.064	F1			ND< 0.0250	U		ND< 0.0210	U		ND< 0.0190	U					
Chrysene	1.0 mg/kg	1.0 mg/kg	3.9 mg/kg	56.0 mg/kg	110.0 mg/kg	0.13	J			0.076	J		0.054	J		0.03	J					
Fluoranthene	100.0 mg/kg	100.0 mg/kg	100.0 mg/kg	500.0 mg/kg	1000.0 mg/kg	0.22	J			0.1	J,*		0.076	J		0.042	J,*					
Indeno(1,2,3-C,D)Pyrene	0.5 mg/kg	0.5 mg/kg	0.5 mg/kg	5.6 mg/kg	11.0 mg/kg	0.12				ND< 0.0380	U		0.044	J		0.035	J					
Phenanthrene	100.0 mg/kg	100.0 mg/kg	100.0 mg/kg	500.0 mg/kg	1000.0 mg/kg	0.097	J			0.051	J		0.035	J		0.015	J					
Pyrene	100.0 mg/kg	100.0 mg/kg	100.0 mg/kg	500.0 mg/kg	1000.0 mg/kg	0.14	J			0.081	J		0.078	J		0.027	J					
Volatile Organic Compounds																						
Acetone	0.05 mg/kg	100.0 mg/kg	100.0 mg/kg	500.0 mg/kg	1000.0 mg/kg	ND< 0.00700	U,F			0.027			0.015	J	ND< 0.00120	U						
Chloroform	0.37 mg/kg	10.0 mg/kg	49.0 mg/kg	350.0 mg/kg	700.0 mg/kg	ND< 0.000510	U			0.00043	J		ND< 0.000580	U	ND< 0.000240	U						
Hexachlorobenzene	0.33 mg/kg	0.41 mg/kg	1.2 mg/kg	6.0 mg/kg	12.0 mg/kg	ND< 0.0210	U,F			ND< 0.0230	U		ND< 0.0190	U		0.028	J					
Methylene Chloride	0.05 mg/kg	51.0 mg/kg	100.0 mg/kg	500.0 mg/kg	1000.0 mg/kg	ND< 0.00380	U			ND< 0.000540	U		0.018		ND< 0.000370	U						
Tetrachloroethylene (PCE)	1.3 mg/kg	5.5 mg/kg	19.0 mg/kg	150.0 mg/kg	300.0 mg/kg	0.0027	J,B			ND< 0.000470	U		0.0039	J,B	ND< 0.000320	U						

NOTES:
Only analytes detected in at least one sample are shown.

TABLE 4: SUMMARY OF EXCEEDANCES OF UNRESTRICTED USE SOIL CLEANUP OBJECTIVES
 WESTWOOD PILOT STUDY
 772 NORTH FOREST ROAD
 AMHERST, NEW YORK

	<i>Arsenic</i>	<i>Mercury</i>	<i>Trivalent Chromium</i>	<i>Cadmium</i>	<i>Copper</i>	<i>Lead</i>	<i>Zinc</i>
TEES	Ar	Hg	Cr	Cd	Cu	Pb	Zn
Unrestricted	x	x	x	x			
Residential	x	x	x	x			
Restricted Residential	x	x		x			
Commercial	x						
Industrial	x						
Max Depth (inches)	12-18	6-12	2-6	0-2			
GREENS	Ar	Hg	Cr	Cd	Cu	Pb	Zn
Unrestricted	x	x			x		
Residential	x	x					
Restricted Residential	x	x					
Commercial	x	x					
Industrial	x	x					
Max Depth (inches)	6-12	12-18			0-2		
FAIRWAYS	Ar	Hg	Cr	Cd	Cu	Pb	Zn
Unrestricted	x	x	x	x		x	x
Residential			x	x			
Restricted Residential			x	x			
Commercial							
Industrial							
Max Depth (inches)	2-6	0-2	2-6	0-2		0-2	0-2
ROUGH	Ar	Hg	Cr	Cd	Cu	Pb	Zn
Unrestricted			x				
Residential							
Restricted Residential							
Commercial							
Industrial							
Max Depth (inches)			0-2				

APPENDIX A

BORING LOGS

BORING LOG

Page 1 of 1



C&S Engineers, Inc.
 141 Elm Street
 Buffalo, New York 14203
 Phone: 716-847-1630
 Fax: 716-847-1454
 www.cscos.com

Borehole ID: G1-46

Site Name: Westwood

Site Location: 772 North Forest Road Amherst NY

Project No.: O76.001.001

Start/End Date: 10/20/2015

North: NA

East: NA

Driller: TREC Environmental, Inc

Rig Type: 6620 DT Geoprobe

Borehole Diameter: 2 in

Weather: Cloudy; 50 Deg. F

Comments: 1:30 PM Start

Elevation: 598.58

Datum: NAVD88

Depth to GW:

Depth in	Sample ID	Soil Description	Comments
0	SO-G1-46-0-2in	CLAY -dark brown; moist soft	0 ppm Sample collected from 0-2" and 2-6" for Arsenic analysis only.
	SO-G1-46-2-6in		
5	SO-G1-46-6-12in		
10	SO-G1-46-12-18in	CLAY -brown; moist; soft	0 ppm Samples collected for 6-12", 12-18", and 18-24" held for Arsenic only.
15	SO-G1-46-18-24in		
20	SO-G1-46-18-24in		
25		CLAY -red brown; moist; soft	0 ppm
30			
35			
40		CLAY -red brown; moist, small in bedded pebbles	0 ppm
45			
46.0			

BORING LOG

Page 1 of 1



C&S Engineers, Inc.
141 Elm Street
Buffalo, New York 14203
Phone: 716-847-1630
Fax: 716-847-1454
www.cscos.com

Borehole ID: H1-47**Site Name: Westwood****Site Location: 772 North Forest Road Amherst NY****Project No.: O76.001.001****Start/End Date: 10/20/2015****North: NA****East: NA****Driller: TREC Environmental, Inc****Rig Type: 6620 DT Geoprobe****Borehole Diameter: 2 in****Weather: Cloudy; 50 Deg. F****Comments: 12:40 PM Start****Elevation: 600****Datum: NAVD88****Depth to GW:**

Depth in	Sample ID	Soil Description	Comments
0	SO-H1-47-0-2in	CLAY -dark brown; moist	0 ppm Sample at 0-2in, 2-6in and 6-12in intervals collected for Arsenic only.
	SO-H1-47-2-6in		
	SO-H1-47-6-12in		
5			
	SO-H1-47-12-18in	CLAY -brown	0 ppm Samples at 12-18in and 18-24in intervals collected for Arsenic only.
10			
	SO-H1-47-18-24in	CLAY -brown; moist to wet	0 ppm
15			
20		CLAY -light red brown	0 ppm
25			
30			
35			
40.0			

BORING LOG

Page 1 of 1



C&S Engineers, Inc.
141 Elm Street
Buffalo, New York 14203
Phone: 716-847-1630
Fax: 716-847-1454
www.cscos.com

Borehole ID: H1-48**Site Name: Westwood****Site Location: 772 North Forest Road Amherst NY****Project No.: O76.001.001****Start/End Date: 10/20/2015****North: NA****East: NA****Driller: TREC Environmental, Inc****Rig Type: 6620 DT Geoprobe****Borehole Diameter: 2 in****Weather:****Comments: 12:10 PM Start****Elevation: 600.62****Datum: NAVD88****Depth to GW:**

Depth in	Sample ID	Soil Description	Comments
0	SO-H1-48-0-2in	Silty LOAM	0 ppm Sample collected at 0-2in for Complete List.
5	SO-H1-48-2-6in	CLAY -dark brown	0 ppm Sample collected at 2-6in for Arsenic only.
		Large Rocks	0 ppm
10	SO-H1-48-6-12in	CLAY -brown; moist	0 ppm Sample collected at 6-12in, 12-18in, and 18-24in for Arsenic only.
15	SO-H1-48-12-18in		
20	SO-H1-48-18-24in		
25			
30			
35			
36.0			

BORING LOG

Page 1 of 1



C&S Engineers, Inc.
141 Elm Street
Buffalo, New York 14203
Phone: 716-847-1630
Fax: 716-847-1454
www.cscos.com

Borehole ID: H1-49

Site Name: Westwood

Site Location: 772 North Forest Road Amherst NY

Project No.: O76.001.001

Start/End Date: 10/20/2015

North: NA

East: NA

Driller: TREC Environmental, Inc

Rig Type: 6620 DT Geoprobe

Borehole Diameter: 2 in

Weather: Cloudy; 50 Deg. F

Comments: 12:00 PM Start

Elevation: 601

Datum: NAVD88

Depth to GW:

Depth in	Sample ID	Soil Description	Comments
0	SO-H1-49-0-2in	Sandy LOAM -brown	0 ppm Samples at 0-2in and 2-6in intervals collected for Arsenic only. Field duplicate from 0-2in interval (DUP C).
5	SO-H1-49-2-6in		
10	SO-H1-49-6-12in	CLAY -brown; embedded Gravel angular dark grey 1" and smaller; trace coal	0 ppm Samples at 6-12in, 12-18in, and 18-24in intervals collected for Arsenic only.
15	SO-H1-49-12-18in		
20	SO-H1-49-18-24in		
25			
30			
33.0			

BORING LOG

Page 1 of 1



C&S Engineers, Inc.
141 Elm Street
Buffalo, New York 14203
Phone: 716-847-1630
Fax: 716-847-1454
www.cscos.com

Borehole ID: K1-54

Site Name: Westwood

Site Location: 772 North Forest Road Amherst NY

Project No.: O76.001.001

Start/End Date: 10/20/2015

North: NA

East: NA

Driller: TREC Environmental, Inc

Rig Type: 6620 DT Geoprobe

Borehole Diameter: 2 in

Weather: Cloudy; 50 Deg. F

Comments: 11:45 AM Start

Elevation: 598.72

Datum: NAVD88

Depth to GW:

Depth in	Sample ID	Soil Description	Comments
0	SO-K1-54-0-2in	Silty LOAM	0 ppm Sample at 0-2in interval collected for Arsenic only.
5	SO-K1-54-2-6in	CLAY -dark brown	0 ppm Sample at 2-6in interval collected for Arsenic only.
10	SO-K1-54-6-12in	CLAY -brown	0 ppm Samples at 6-12in, 12-18in and 18-24in interval collected for Arsenic only.
15	SO-K1-54-12-18in		
20	SO-K1-54-18-24in		
25			
30			
35			
36.0			

BORING LOG

Page 1 of 1



C&S Engineers, Inc.
141 Elm Street
Buffalo, New York 14203
Phone: 716-847-1630
Fax: 716-847-1454
www.cscos.com

Borehole ID: K1-56

Site Name: Westwood

Site Location: 772 North Forest Road Amherst NY

Project No.: O76.001.001

Start/End Date: 10/20/2015

North: NA

East: NA

Driller: TREC Environmental, Inc

Rig Type: 6620 DT Geoprobe

Borehole Diameter: 2 in

Weather: Cloudy; 50 Deg. F

Comments: 11:00 AM Start

Elevation: 598.865

Datum: NAVD88

Depth to GW:

Depth in	Sample ID	Soil Description	Comments
0	SO-K1-56-0-2in	CLAY -dark brown; trace silt	0 ppm Sample at 0-2in and 2-6in intervals collected for Arsenic only.
	SO-K1-56-2-6in		
	SO-K1-56-6-12in		
5		CLAY -brown	0 ppm Samples at 6-12in, 12-18in, and 18-24in intervals collected for Arsenic only.
	SO-K1-56-12-18in		
	SO-K1-56-18-24in		
10			
15			
20			
25			
30			
35			
40			
44.0			

BORING LOG

Page 1 of 1



C&S Engineers, Inc.
141 Elm Street
Buffalo, New York 14203
Phone: 716-847-1630
Fax: 716-847-1454
www.cscos.com

Borehole ID: K1-57

Site Name: Westwood

Site Location: 772 North Forest Road Amherst NY

Project No.: O76.001.001

Start/End Date: 10/20/2015

North: NA

East: NA

Driller: TREC Environmental, Inc

Rig Type: 6620 DT Geoprobe

Borehole Diameter: 2 in

Weather: Cloudy; 50 Deg. F

Comments: 11:00 AM Start

Elevation: 598.97

Datum: NAVD88

Depth to GW:

Depth in	Sample ID	Soil Description	Comments
0	SO-K1-57-0-2in	Silty LOAM	0 ppm Sample at 0-2in interval collected for Arsenic only.
5	SO-K1-57-2-6in	CLAY -dark brown	0 ppm Sample at 2-6in interval collected for Arsenic only.
10	SO-K1-57-6-12in	CLAY -brown	0 ppm Sample at 6-12in, 12-18in and 18-24in interval collected for Arsenic only.
15	SO-K1-57-12-18in		
20	SO-K1-57-18-24in		
25			
30			
35			
40			
43.0			

BORING LOG

Page 1 of 1



C&S Engineers, Inc.
 141 Elm Street
 Buffalo, New York 14203
 Phone: 716-847-1630
 Fax: 716-847-1454
 www.cscos.com

Borehole ID: K1-59

Site Name: Westwood

Site Location: 772 North Forest Road Amherst NY

Project No.: O76.001.001

Start/End Date: 10/20/2015

North: NA

East: NA

Driller: TREC Environmental, Inc

Rig Type: 6620 DT Geoprobe

Borehole Diameter: 2 in

Weather: Cloudy; 50 Deg. F

Comments: 1:30 PM Start

Elevation: 599.25

Datum: NAVD88

Depth to GW:

Depth in	Sample ID	Soil Description	Comments
0	SO-K1-59-0-2in	CLAY -dark brown	0 ppm Samples at 0-2in, 2-6in and 6-12in intervals collected for Arsenic only. Field duplicated collected from the 0-2in interval (DUP A).
	SO-K1-59-2-6in		
5	SO-K1-59-6-12in		
10	SO-K1-59-12-18in		
15	SO-K1-59-12-18in	Silty SAND -brown; fine; dry	0 ppm Sample at 12-18in interval collected for Arsenic only.
20	SO-K1-59-18-24in	CLAY with red angular rocks, grey rounded rocks	0 ppm Sample at 18-24in interval collected for Arsenic only.
25			
30			
35			
40			
44.0			

BORING LOG

Page 1 of 1



C&S Engineers, Inc.
141 Elm Street
Buffalo, New York 14203
Phone: 716-847-1630
Fax: 716-847-1454
www.cscos.com

Borehole ID: K1-62

Site Name: Westwood

Site Location: 772 North Forest Road Amherst NY

Project No.: O76.001.001

Start/End Date: 10/20/2015

North: NA

East: NA

Driller: TREC Environmental, Inc

Rig Type: 6620 DT Geoprobe

Borehole Diameter: 2 in

Weather: Cloudy; 50 Deg. F

Comments:

Elevation: 600.61

Datum: NAVD88

Depth to GW:

Depth in	Sample ID	Soil Description	Comments
0	SO-K1-62-0-2in	CLAY -dark brown	0 ppm Sample at 0-2in collected for Complete List and 2-6in intervals collected for Arsenic only.
	SO-K1-62-2-6in		
	SO-K1-62-6-12in		
5		CLAY -dark brown	0 ppm Samples at 6-12in, 12-18in, and 18-24in intervals collected for Arsenic only.
	SO-K1-62-12-18in		
	SO-K1-62-18-24in		
10			
15			
20			
25			
30			
35			
40			
45.0			

BORING LOG

Page 1 of 1



C&S Engineers, Inc.
141 Elm Street
Buffalo, New York 14203
Phone: 716-847-1630
Fax: 716-847-1454
www.cscos.com

Borehole ID: K1-67**Site Name: Westwood****Site Location: 772 North Forest Road Amherst NY****Project No.:****Start/End Date: 10/20/2015****North: NA****East: NA****Driller: TREC Environmental, Inc****Rig Type: 6620 DT Geoprobe****Borehole Diameter: 2 in****Weather: Cloudy; 50 Deg. F****Comments: 2:05 PM Start****Elevation: 602****Datum: NAVD88****Depth to GW:**

Depth in	Sample ID	Soil Description	Comments
0	SO-K1-67-0-2in	CLAY -dark brown; moist	0 ppm Sample at 0-2in and 2-6in intervals collected for Arsenic only.
	SO-K1-67-2-6in		
	SO-K1-67-6-12in		
5		CLAY -brown	0 ppm Samples at 6-12in, 12-18in, and 18-24in intervals collected for Arsenic only.
	SO-K1-67-12-18in		
	SO-K1-67-18-24in		
10			
15			
20			
25			
30			
35			
40			
42.0			

BORING LOG

Page 1 of 1



C&S Engineers, Inc.
 141 Elm Street
 Buffalo, New York 14203
 Phone: 716-847-1630
 Fax: 716-847-1454
 www.cscos.com

Borehole ID: L1-51

Site Name: Westwood

Site Location: 772 North Forest Road Amherst NY

Project No.: O76.001.001

Start/End Date: 10/19/2015

North: NA

East: NA

Driller: TREC Environmental, Inc

Rig Type: 6620 DT Geoprobe

Borehole Diameter: 2 in

Weather: Cloudy; 50 Deg. F

Comments:

Elevation: 598.13

Datum: NAVD88

Depth to GW:

Depth in	Sample ID	Soil Description	Comments
0	SO-L1-51-0-2in	CLAY -dark brown	0 ppm Sample at 0-2in and 2-6in intervals collected for Arsenic only.
	SO-L1-51-2-6in		
5	SO-L1-51-6-12in		
10	SO-L1-51-12-18in	CLAY -dark brown	0 ppm Samples at 6-12in, 12-18in, and 18-24in intervals collected for Arsenic only.
15	SO-L1-51-18-24in		
20			
25			
30			
35			
40			
45			
46.0			

BORING LOG

Page 1 of 1



C&S Engineers, Inc.
 141 Elm Street
 Buffalo, New York 14203
 Phone: 716-847-1630
 Fax: 716-847-1454
 www.cscos.com

Borehole ID: L1-56

Site Name: Westwood

Site Location: 772 North Forest Road Amherst NY

Project No.: O76.001.001

Start/End Date: 10/19/2015

North: NA

East: NA

Driller: TREC Environmental, Inc

Rig Type: 6620 DT Geoprobe

Borehole Diameter: 2 in

Weather: Cloudy; 50 Deg. F

Comments:

Elevation: 598.742

Datum: NAVD88

Depth to GW:

Depth in	Sample ID	Soil Description	Comments
0	SO-L1-56-0-2in	CLAY -dark brown	0 ppm Sample at 0-2in and 2-6in intervals collected for Arsenic only.
	SO-L1-56-2-6in		
5	SO-L1-56-6-12in		
10	SO-L1-56-12-18in	CLAY -brown	0 ppm Samples at 6-12in, 12-18in, and 18-24in intervals collected for Arsenic only.
15	SO-L1-56-18-24		
20		CLAY -brown; wet	0 ppm
25		CLAY -brown; stiff	0 ppm
30			
35			
40			
41.0			

BORING LOG

Page 1 of 1



C&S Engineers, Inc.
141 Elm Street
Buffalo, New York 14203
Phone: 716-847-1630
Fax: 716-847-1454
www.cscos.com

Borehole ID: L1-57

Site Name: Westwood

Site Location: 772 North Forest Road Amherst NY

Project No.: O76.001.001

Start/End Date: 10/20/2015

North: NA

East: NA

Driller: TREC Environmental, Inc

Rig Type: 6620 DT Geoprobe

Borehole Diameter: 2 in

Weather: Cloudy; 50 Deg. F

Comments: 11:30 AM Start

Elevation: 598.925

Datum: NAVD88

Depth to GW:

Depth in	Sample ID	Soil Description	Comments
0	SO-L1-57-0-2in	Silty LOAM	0 ppm Sample at 0-2in interval collected for Arsenic only.
5	SO-L1-57-2-6in	CLAY -dark brown	0 ppm Sample at 2-6in interval collected for Arsenic only.
10	SO-L1-57-6-12in	CLAY -brown	0 ppm Samples at 6-12in, 12-18in and 18-24in intervals collected for Arsenic only.
15	SO-L1-57-12-18in		
20	SO-L1-57-18-24in		
25			
30			
35			
40			
41.0			

BORING LOG

Page 1 of 1



C&S Engineers, Inc.
 141 Elm Street
 Buffalo, New York 14203
 Phone: 716-847-1630
 Fax: 716-847-1454
 www.cscos.com

Borehole ID: L1-58

Site Name: Westwood

Site Location: 772 North Forest Road Amherst NY

Project No.: O76.001.001

Start/End Date: 10/20/2015

North: NA

East: NA

Driller: TREC Environmental, Inc

Rig Type: 6620 DT Geoprobe

Borehole Diameter: 2 in

Weather: Cloudy; 50 Deg. F

Comments: 10:05 AM Start

Elevation: 599.296

Datum: NAVD88

Depth to GW:

Depth in	Sample ID	Soil Description	Comments
0	SO-L1-58-0-2in	LOAM	0 ppm Sample at 0-2in interval collected for Arsenic only.
5	SO-L1-58-2-6in	CLAY -dark brown; trace Silt	0 ppm Samples at 2-6in and 6-12in intervals collected for Arsenic only.
10	SO-L1-58-6-12in		
15	SO-L1-58-12-18in	CLAY -brown	0 ppm Samples at 12-18in and 18-24in intervals collected for Arsenic only.
20	SO-L1-58-18-24in		
25			
30		Silty CLAY-light brown; dry	0 ppm
35		CLAY -brown	0 ppm
40			
43.0			

BORING LOG

Page 1 of 2



C&S Engineers, Inc.
 141 Elm Street
 Buffalo, New York 14203
 Phone: 716-847-1630
 Fax: 716-847-1454
 www.cscos.com

Borehole ID: L1-59

Site Name: Westwood

Site Location: 772 North Forest Road Amherst NY

Project No.: O76.001.001

Start/End Date: 10/20/2015

North: NA

East: NA

Driller: TREC Environmental, Inc

Rig Type: 6620 DT Geoprobe

Borehole Diameter: 2 in

Weather: Cloudy; 50 Deg. F

Comments: 10:00 AM Start

Elevation: 599.518

Datum: NAVD88

Depth to GW:

Depth in	Sample ID	Soil Description	Comments
0	SO-L1-59-0-2in	Silty LOAM	0 ppm Sample at 0-2in interval collected for Arsenic only. Field duplicated collected from the 0-2in interval (DUP D).
5	SO-L1-59-2-6in	CLAY -dark brown	0 ppm Sample at 2-6in interval collected for Arsenic only.
10	SO-L1-59-6-12in	CLAY -brown	0 ppm Samples at 6-12in, 12-18in and 18-24in intervals collected for Arsenic only.
15	SO-L1-59-12-18in		
20	SO-L1-59-18-24in		
25			
30			
35			
36			

North: NA

East: NA

Driller: TREC Environmental, Inc

Rig Type: 6620 DT Geoprobe

Borehole Diameter: 2 in

Weather: Cloudy; 50 Deg. F

Comments: 10:00 AM Start

Elevation: 599.518

Datum: NAVD88

Depth to GW:

Depth in	Sample ID	Soil Description	Comments
36 40 42.0	8-42	CLAY -brown	0 ppm Samples at 6-12in, 12-18in and 18-24in intervals collected for Arsenic only.

BORING LOG

Page 1 of 2



C&S Engineers, Inc.
141 Elm Street
Buffalo, New York 14203
Phone: 716-847-1630
Fax: 716-847-1454
www.cscos.com

Borehole ID: L1-60

Site Name: Westwood

Site Location: 772 North Forest Road Amherst NY

Project No.: O76.001.001

Start/End Date: 10/19/2015

North: NA

East: NA

Driller: TREC Environmental, Inc

Rig Type: 6620 DT Geoprobe

Borehole Diameter: 2 in

Weather: Cloudy; 50 Deg. F

Comments:

Elevation: 599.757

Datum: NAVD88

Depth to GW:

Depth in	Sample ID	Soil Description	Comments
0	SO-L1-60-0-2in	Silty LOAM	0 ppm Sample at 0-2in interval collected for Arsenic only.
5	SO-L1-60-2-6in	silty CLAY -dark brown	0 ppm Samples at 2-6in and 6-12in intervals collected for Arsenic only.
10	SO-L1-60-6-12in	CLAY -brown	0 ppm Samples at 12-18in and 18-24in intervals collected for Arsenic only.
15	SO-L1-60-12-18in		
20	SO-L1-60-18-24in		
25			
30			
35			
40			

BORING LOG

Page 2 of 2



C&S Engineers, Inc.
141 Elm Street
Buffalo, New York 14203
Phone: 716-847-1630
Fax: 716-847-1454
www.cscos.com

Borehole ID: L1-60

Site Name: Westwood

Site Location: 772 North Forest Road Amherst NY

Project No.: O76.001.001

Start/End Date: 10/19/2015

North: NA

East: NA

Driller: TREC Environmental, Inc

Rig Type: 6620 DT Geoprobe

Borehole Diameter: 2 in

Weather: Cloudy; 50 Deg. F Comments:

Elevation: 599.757

Datum: NAVD88

Depth to GW:

Depth in	Sample ID	Soil Description	Comments
40	SO-L1-60-10-44in	CLAY -brown	0 ppm Samples at 12-18in and 18-24in intervals collected for Arsenic only.
44		CLAY -brown	

BORING LOG

Page 1 of 1



C&S Engineers, Inc.
 141 Elm Street
 Buffalo, New York 14203
 Phone: 716-847-1630
 Fax: 716-847-1454
 www.cscos.com

Borehole ID: L1-61

Site Name: Westwood

Site Location: 772 North Forest Road Amherst NY

Project No.:

Start/End Date: 10/20/2015

North: NA

East: NA

Driller: TREC Environmental, Inc

Rig Type: 6620 DT Geoprobe

Borehole Diameter: 2 in

Weather: Cloudy; 50 Deg. F

Comments: 9:30 AM Start

Elevation: 600.203

Datum: NAVD88

Depth to GW:

Depth in	Sample ID	Soil Description	Comments
0	SO-L1-61-0-2in	Silty LOAM	0 ppm Sample at 0-2in and 2-6in intervals collected for Arsenic only.
5	SO-L1-61-2-6in		
	SO-L1-61-6-12in	CLAY -dark brown	0 ppm Sample at 6-12in interval collected for Arsenic only.
10		CLAY -brown; embedded Gravel angular dark grey 0.25"	0 ppm Samples at 6-12in, 12-18in, and 18-24in intervals collected for Arsenic only.
15	SO-L1-61-12-18in		
20	SO-L1-61-18-24in		
25			
30			
35			
40			
45			
46.0			

BORING LOG

Page 1 of 1



C&S Engineers, Inc.
141 Elm Street
Buffalo, New York 14203
Phone: 716-847-1630
Fax: 716-847-1454
www.cscos.com

Borehole ID: M1-57**Site Name: Westwood****Site Location: 772 North Forest Road Amherst NY****Project No.: O76.001.001****Start/End Date: 10/20/2015****North: NA****East: NA****Driller: TREC Environmental, Inc****Rig Type: 6620 DT Geoprobe****Borehole Diameter: 2 in****Weather: Cloudy; 50 Deg. F****Comments: 10:30 AM Start****Elevation: 598.914****Datum: NAVD88****Depth to GW:**

Depth in	Sample ID	Soil Description	Comments
0	SO-M1-57-0-2in	Silty LOAM	0 ppm Sample at 0-2in and 2-6in intervals collected for Arsenic only.
	SO-M1-57-2-6in		
5		CLAY -dark brown	0 ppm Sample at 6-12in interval collected for Arsenic only.
	SO-M1-57-6-12in		
10		CLAY -brown	0 ppm Samples at 12-18in, and 18-24in intervals collected for Arsenic only.
	SO-M1-57-12-18in		
	SO-M1-57-18-24in		
25			
30			
32.0			

BORING LOG

Page 1 of 1



C&S Engineers, Inc.
141 Elm Street
Buffalo, New York 14203
Phone: 716-847-1630
Fax: 716-847-1454
www.cscos.com

Borehole ID: M1-58

Site Name: Westwood

Site Location: 772 North Forest Road Amherst NY

Project No.: O76.001.001

Start/End Date: 10/20/2015

North: NA

East: NA

Driller: TREC Environmental, Inc

Rig Type: 6620 DT Geoprobe

Borehole Diameter: 2 in

Weather: Cloudy; 50 Deg. F

Comments: 10:25 AM Start

Elevation: 599.315

Datum: NAVD88

Depth to GW:

Depth in	Sample ID	Soil Description	Comments
0	SO-M1-58-0-2in	Silty LOAM	0 ppm Sample at 0-2in and 2-6in intervals collected for Arsenic only.
5	SO-M1-58-2-6in	CLAY -brown	0 ppm Sample at 6-12in interval collected for Arsenic only.
10	SO-M1-58-6-12in	CLAY -brown; dry	0 ppm Samples at 12-18in and 18-24in intervals collected for Arsenic only.
15	SO-M1-58-12-18in		
20	SO-M1-58-18-24in		
25			
30			
35			
40			
45			
48.0			

BORING LOG

Page 1 of 2



C&S Engineers, Inc.
 141 Elm Street
 Buffalo, New York 14203
 Phone: 716-847-1630
 Fax: 716-847-1454
 www.cscos.com

Borehole ID: M1-59

Site Name: Westwood

Site Location: 772 North Forest Road Amherst NY

Project No.: O76.001.001

Start/End Date: 10/20/2015

North: NA

East: NA

Driller: TREC Environmental, Inc

Rig Type: 6620 DT Geoprobe

Borehole Diameter: 2 in

Weather: Cloudy; 50 Deg. F


Comments:

Elevation: 599.537

Datum: NAVD88

Depth to GW:

Depth in	Sample ID	Soil Description	Comments
0	SO-M1-59-0-2in	CLAY -brown	0 ppm Sample at 0-2in interval collected for Arsenic only.
5	SO-M1-59-2-6in	SILT -brown	0 ppm Sample at 2-6in interval collected for Arsenic only.
10	SO-M1-59-6-12in	CLAY -dark brown	0 ppm Sample at 6-12in interval collected for Arsenic only.
15	SO-M1-59-12-18in	CLAY -brown	0 ppm Samples at 12-18in and 18-24in intervals collected for Arsenic only.
20	SO-M1-59-18-24in		
25			
30			
35			
40			

BORING LOG		Page 2 of 2	Borehole ID: M1-59	
		C&S Engineers, Inc. 141 Elm Street Buffalo, New York 14203 Phone: 716-847-1630 Fax: 716-847-1454 www.cscos.com	Site Name: Westwood	
			Site Location: 772 North Forest Road Amherst NY	
			Project No.: O76.001.001	
			Start/End Date: 10/20/2015	

North: NA	Driller: TREC Environmental, Inc Rig Type: 6620 DT Geoprobe Borehole Diameter: 2 in Weather: Cloudy; 50 Deg. F	Elevation: 599.537 Datum: NAVD88 Depth to GW:
East: NA		
Comments:		

Depth in	Sample ID	Soil Description	Comments
40 45 48.0	SO-M1-59-13-48in	CLAY -brown	0 ppm Samples at 12-18in and 18-24in intervals collected for Arsenic only.

BORING LOG

Page 1 of 1



C&S Engineers, Inc.
 141 Elm Street
 Buffalo, New York 14203
 Phone: 716-847-1630
 Fax: 716-847-1454
 www.cscos.com

Borehole ID: M1-60

Site Name: Westwood

Site Location: 772 North Forest Road Amherst NY

Project No.: O76.001.001

Start/End Date: 10/20/2015

North: NA

East: NA

Driller: TREC Environmental, Inc

Rig Type: 6620 DT Geoprobe

Borehole Diameter: 2 in

Weather: Cloudy; 50 Deg. F

Comments:

Elevation: 599.877

Datum: NAVD88

Depth to GW:

Depth in	Sample ID	Soil Description	Comments
0	SO-M1-60-0-2in	Silty and Sandy LOAM	0 ppm Sample at 0-2in interval collected for Arsenic only.
5	SO-M1-60-2-6in	SILT -brown	0 ppm Sample at 2-6in interval collected for Arsenic only.
10	SO-M1-60-6-12in	CLAY -dark brown	0 ppm Sample at 6-12in interval collected for Arsenic only.
15	SO-M1-60-12-18in	CLAY -brown	0 ppm Samples at 12-18in and 18-24in intervals collected for Arsenic only.
20	SO-M1-60-18-24in		
25			
30			
35			
40			
45			
48.0			

BORING LOG

Page 1 of 1



C&S Engineers, Inc.
141 Elm Street
Buffalo, New York 14203
Phone: 716-847-1630
Fax: 716-847-1454
www.cscos.com

Borehole ID: M1-61

Site Name: Westwood

Site Location: 772 North Forest Road Amherst NY

Project No.: O76.001.001

Start/End Date: 10/20/2015

North: NA

East: NA

Driller: TREC Environmental, Inc

Rig Type: 6620 DT Geoprobe

Borehole Diameter: 2 in

Weather: Cloudy; 50 Deg. F

Comments: 2:38 PM Start

Elevation: 600.22

Datum: NAVD88

Depth to GW:

Depth in	Sample ID	Soil Description	Comments
0	SO-M1-61-0-2in	Silty LOAM	0 ppm Sample at 0-2in and 2-6in intervals collected for Arsenic only.
	SO-M1-61-2-6in		
5		CLAY -brown	0 ppm Samples at 2-6in, 6-12in, 12-18in, and 18-24in intervals collected for Arsenic only.
	SO-M1-61-6-12in		
10			
	SO-M1-61-12-18in		
15			
	SO-M1-61-18-24in		
20			
25			
30			
35			
40			
44.0			

BORING LOG

Page 1 of 1



C&S Engineers, Inc.
141 Elm Street
Buffalo, New York 14203
Phone: 716-847-1630
Fax: 716-847-1454
www.cscos.com

Borehole ID: M1-62

Site Name: Westwood

Site Location: 772 North Forest Road Amherst NY

Project No.: O76.001.001

Start/End Date: 10/20/2015

North: NA

East: NA

Driller: TREC Environmental, Inc

Rig Type: 6620 DT Geoprobe

Borehole Diameter: 2 in

Weather: Cloudy; 50 Deg. F

Comments:

Elevation: 600.48

Datum: NAVD88

Depth to GW:

Depth in	Sample ID	Soil Description	Comments
0	SO-M1-62-0-2in	Silty LOAM	0 ppm Sample at 0-2in and 2-6in intervals collected for Arsenic only.
5	SO-M1-62-2-6in	CLAY -dark brown	0 ppm Samples at 2-6in and 6-12in intervals collected for Arsenic only.
10	SO-M1-62-6-12in	CLAY -brown	0 ppm Samples at 12-18in and 18-24in intervals collected for Arsenic only.
15	SO-M1-62-12-18in		
20	SO-M1-62-18-24in		
25			
30			
35			
40			
44.0			

BORING LOG

Page 1 of 1



C&S Engineers, Inc.
 141 Elm Street
 Buffalo, New York 14203
 Phone: 716-847-1630
 Fax: 716-847-1454
 www.cscos.com

Borehole ID: M1-63

Site Name: Westwood

Site Location: 772 North Forest Road Amherst NY

Project No.: O76.001.001

Start/End Date: 10/20/2015

North: NA

East: NA

Driller: TREC Environmental, Inc

Rig Type: 6620 DT Geoprobe

Borehole Diameter: 2 in

Weather: Cloudy; 50 Deg. F

Comments:

Elevation: 600.073

Datum: NAVD88

Depth to GW:

Depth in	Sample ID	Soil Description	Comments
0	SO-M1-63-0-2in	Clayey LOAM	0 ppm Sample at 0-2in interval collected for Arsenic only.
5	SO-M1-63-2-6in	CLAY -dark brown	0 ppm Samples at 2-6in and 6-12in intervals collected for Arsenic only.
10	SO-M1-63-6-12in		
15	SO-M1-63-12-18in	CLAY -brown	0 ppm Samples at 12-18in and 18-24in intervals collected for Arsenic only.
20	SO-M1-63-18-24in		
25			
30			
35			
40		Silty CLAY -red brown; wet	0 ppm
45.0			

BORING LOG

Page 1 of 2



C&S Engineers, Inc.
 141 Elm Street
 Buffalo, New York 14203
 Phone: 716-847-1630
 Fax: 716-847-1454
 www.cscos.com

Borehole ID: N1-61

Site Name: Westwood

Site Location: 772 North Forest Road Amherst NY

Project No.: O76.001.001

Start/End Date: 10/20/2015

North: NA

East: NA

Driller: TREC Environmental, Inc

Rig Type: 6620 DT Geoprobe

Borehole Diameter: 2 in

Weather: Cloudy; 50 Deg. F

Comments:

Elevation: 601

Datum: NAVD88

Depth to GW:

Depth in	Sample ID	Soil Description	Comments
0	SO-N1-61-0-2in	Silty LOAM	0 ppm Sample at 0-2in interval collected for Arsenic only. Field duplicated collected from the 0-2in interval (DUP E).
5	SO-N1-61-2-6in	CLAY -dark brown	0 ppm Samples at 2-6in and 6-12in intervals collected for Arsenic only.
10	SO-N1-61-6-12in	CLAY -brown	0 ppm Samples at 12-18in and 18-24in intervals collected for Arsenic only.
15	SO-N1-61-12-18in		
20	SO-N1-61-18-24in		
24			

BORING LOG

Page 2 of 2



C&S Engineers, Inc.
141 Elm Street
Buffalo, New York 14203
Phone: 716-847-1630
Fax: 716-847-1454
www.cscos.com

Borehole ID: N1-61**Site Name: Westwood****Site Location: 772 North Forest Road Amherst NY****Project No.: O76.001.001****Start/End Date: 10/20/2015****North: NA****East: NA****Driller: TREC Environmental, Inc****Rig Type: 6620 DT Geoprobe****Borehole Diameter: 2 in****Weather: Cloudy; 50 Deg. F****Comments:****Elevation: 601****Datum: NAVD88****Depth to GW:**

Depth in	Sample ID	Soil Description	Comments
24	SO-N1-61-9-43in	CLAY -brown	0 ppm Samples at 12-18in and 18-24in intervals collected for Arsenic only.
25			
30			
35			
40			
43.0			

BORING LOG

Page 1 of 1



C&S Engineers, Inc.
 141 Elm Street
 Buffalo, New York 14203
 Phone: 716-847-1630
 Fax: 716-847-1454
 www.cscos.com

Borehole ID: N1-62

Site Name: Westwood

Site Location: 772 North Forest Road Amherst NY

Project No.: O76.001.001

Start/End Date: 10/20/2015

North: NA

East: NA

Driller: TREC Environmental, Inc

Rig Type: 6620 DT Geoprobe

Borehole Diameter: 2 in

Weather: Cloudy; 50 Deg. F

Comments:

Elevation: 599.936

Datum: NAVD88

Depth to GW:

Depth in	Sample ID	Soil Description	Comments
0	SO-N1-62-0-2in	Silty LOAM	0 ppm Sample at 0-2in interval collected for Arsenic only.
5	SO-N1-62-2-6in	CLAY -dark brown	0 ppm Samples at 2-6in, 6-12in, 12-18in, and 18-24in intervals collected for Arsenic only.
10	SO-N1-62-6-12in	Clay -brown	0 ppm Samples at 12-18in and 18-24in intervals collected for Arsenic only.
15	SO-N1-62-12-18in		
20	SO-N1-62-18-24in		
25			
30			
35			
40			
43.0			

BORING LOG

Page 1 of 1



C&S Engineers, Inc.
141 Elm Street
Buffalo, New York 14203
Phone: 716-847-1630
Fax: 716-847-1454
www.cscos.com

Borehole ID: N1-63

Site Name: Westwood

Site Location: 772 North Forest Road Amherst NY

Project No.:

Start/End Date: 10/20/2015

North: NA

East: NA

Driller: TREC Environmental, Inc

Rig Type: 6620 DT Geoprobe

Borehole Diameter: 2 in

Weather: Cloudy; 50 Deg. F

Comments: 9:00 AM Start

Elevation: 600.263

Datum: NAVD88

Depth to GW:

Depth in	Sample ID	Soil Description	Comments
0	SO-N1-63-0-2in	Silty LOAM -brown	0 ppm Sample at 0-2in interval collected for Arsenic only.
5	SO-N1-63-2-6in	CLAY -dark brown	0 ppm Sample at 2-6in intervals collected for Arsenic only.
10	SO-N1-63-6-12in	CLAY -brown	0 ppm Samples at 6-12in, 12-18in and 18-24in intervals collected for Arsenic only.
15	SO-N1-63-12-18in		
20	SO-N1-63-18-24in		
25			
30			
35			
40			
42.0			

BORING LOG

Page 1 of 1



C&S Engineers, Inc.
 141 Elm Street
 Buffalo, New York 14203
 Phone: 716-847-1630
 Fax: 716-847-1454
 www.cscos.com

Borehole ID: N1-64

Site Name: Westwood

Site Location: 772 North Forest Road Amherst NY

Project No.: O76.001.001

Start/End Date: 10/19/2015

North: NA

East: NA

Driller: TREC Environmental, Inc

Rig Type: 6620 DT Geoprobe

Borehole Diameter: 2 in

Weather: Cloudy; 50 Deg. F

Comments:

Elevation: 600.005

Datum: NAVD88

Depth to GW:

Depth in	Sample ID	Soil Description	Comments
0	SO-N1-64-0-2in	Clayey LOAM	0 ppm Sample at 0-2in and 2-6in intervals collected for Arsenic only.
5	SO-N1-64-2-6in	CLAY -dark brown	0 ppm Samples at 2-6in and 6-12in intervals collected for Arsenic only.
10	SO-N1-64-6-12in		
15	SO-N1-64-12-18in	Clay -brown; wet	0 ppm Samples at 12-18in and 18-24in intervals collected for Arsenic only.
20	SO-N1-64-18-24in		
25			
30			
35		CLAY -brown	0 ppm
40			
43.0			

BORING LOG

Page 1 of 1



C&S Engineers, Inc.
 141 Elm Street
 Buffalo, New York 14203
 Phone: 716-847-1630
 Fax: 716-847-1454
 www.cscos.com

Borehole ID: N1-65

Site Name: Westwood

Site Location: 772 North Forest Road Amherst NY

Project No.: O76.001.001

Start/End Date: 10/19/2015

North: NA

East: NA

Driller: TREC Environmental, Inc

Rig Type: 6620 DT Geoprobe

Borehole Diameter: 2 in

Weather: Cloudy; 50 Deg. F

Comments:

Elevation: 599.867

Datum: NAVD88

Depth to GW:

Depth in	Sample ID	Soil Description	Comments
0	SO-N1-65-0-2in	CLAY -dark brown; wet	0 ppm Sample at 0-2in and 2-6in intervals collected for Arsenic only.
	SO-N1-65-2-6in		
5		CLAY -brown; wet	0 ppm Samples at 6-12in, 12-18in, and 18-24in intervals collected for Arsenic only.
	SO-N1-65-6-12in		
10			
	SO-N1-65-12-18in		
15		CLAY -brown; hard; dry	0 ppm
	SO-N1-65-18-24in		
20			
25			
30			
35			
40			
45			
46.0			

BORING LOG

Page 1 of 1



C&S Engineers, Inc.
141 Elm Street
Buffalo, New York 14203
Phone: 716-847-1630
Fax: 716-847-1454
www.cscos.com

Borehole ID: P1-63

Site Name: Westwood

Site Location: 772 North Forest Road Amherst NY

Project No.: O76.001.001

Start/End Date: 10/19/2015

North: NA

East: NA

Driller: TREC Environmental, Inc

Rig Type: 6620 DT Geoprobe

Borehole Diameter: 2 in

Weather: Cloudy; 50 Deg. F

Comments:

Elevation: 599.818

Datum: NAVD88

Depth to GW:

Depth in	Sample ID	Soil Description	Comments
0	SO-P1-63-0-2in	Silty LOAM	0 ppm Sample at 0-2in and 2-6in intervals collected for Arsenic only.
5	SO-P1-63-2-6in	CLAY -dark brown	0 ppm Samples at 2-6in and 6-12in intervals collected for Arsenic only.
10	SO-P1-63-6-12in		
15	SO-P1-63-12-18in	CLAY -brown	0 ppm Samples at 12-18in and 18-24in intervals collected for Arsenic only.
20	SO-P1-63-18-24in		
25			
30			
35			
40			
45.0			

BORING LOG

Page 1 of 1



C&S Engineers, Inc.
 141 Elm Street
 Buffalo, New York 14203
 Phone: 716-847-1630
 Fax: 716-847-1454
 www.cscos.com

Borehole ID: P1-64

Site Name: Westwood

Site Location: 772 North Forest Road Amherst NY

Project No.: O76.001.001

Start/End Date: 10/20/2015

North: NA

East: NA

Driller: TREC Environmental, Inc

Rig Type: 6620 DT Geoprobe

Borehole Diameter: 2 in

Weather: Cloudy; 50 Deg. F Comments:

Elevation: 599.57

Datum: NAVD88

Depth to GW:

Depth in	Sample ID	Soil Description	Comments
0	SO-P1-64-0-2in	Silty CLAY -dark brown; wet	0 ppm Sample at 0-2in and 2-6in intervals collected for Arsenic only. Field duplicated collected from the 0-2in interval (DUP F).
5	SO-P1-64-2-6in		
10	SO-P1-64-6-12in	CLAY -dark brown	0 ppm Sample at 6-12in interval collected for Arsenic only.
15	SO-P1-64-12-18in	CLAY -brown	0 ppm Samples at 12-18in and 18-24in intervals collected for Arsenic only.
20	SO-P1-64-18-24in		
25			
30			
35			
40			
45			
47.0			

BORING LOG

Page 1 of 2



C&S Engineers, Inc.
 141 Elm Street
 Buffalo, New York 14203
 Phone: 716-847-1630
 Fax: 716-847-1454
 www.cscos.com

Borehole ID: P1-65

Site Name: Westwood

Site Location: 772 North Forest Road Amherst NY

Project No.: O76.001.001

Start/End Date: 10/20/2015

North: NA

East: NA

Driller: TREC Environmental, Inc

Rig Type: 6620 DT Geoprobe

Borehole Diameter: 2 in

Weather: Cloudy; 50 Deg. F

Comments: 2:00 PM Start

Elevation: 599.584

Datum: NAVD88

Depth to GW:

Depth in	Sample ID	Soil Description	Comments
0	SO-P1-65-0-2in	Silty LOAM	0 ppm Sample at 0-2in interval collected for Complete List. Field duplicated collected from the 0-2in interval (DUP J).
5	SO-P1-65-2-6in	CLAY -dark brown	0 ppm Samples at 2-6in and 6-12in intervals collected for Arsenic only.
10	SO-P1-65-6-12in		
15	SO-P1-65-12-18in	CLAY -brown	0 ppm Samples at 12-18in and 18-24in intervals collected for Arsenic only.
20	SO-P1-65-18-24in		
25			
30			
35			
36			

BORING LOG

Page 2 of 2



C&S Engineers, Inc.
141 Elm Street
Buffalo, New York 14203
Phone: 716-847-1630
Fax: 716-847-1454
www.cscos.com

Borehole ID: P1-65

Site Name: Westwood

Site Location: 772 North Forest Road Amherst NY

Project No.: O76.001.001

Start/End Date: 10/20/2015

North: NA

East: NA

Driller: TREC Environmental, Inc

Rig Type: 6620 DT Geoprobe

Borehole Diameter: 2 in

Weather: Cloudy; 50 Deg. F Comments: 2:00 PM Start

Elevation: 599.584

Datum: NAVD88

Depth to GW:

Depth in	Sample ID	Soil Description	Comments
36 40 45.0	12-45	CLAY -brown	0 ppm Samples at 12-18in and 18-24in intervals collected for Arsenic only.

BORING LOG

Page 1 of 1



C&S Engineers, Inc.
141 Elm Street
Buffalo, New York 14203
Phone: 716-847-1630
Fax: 716-847-1454
www.cscos.com

Borehole ID: P1-66

Site Name: Westwood

Site Location: 772 North Forest Road Amherst NY

Project No.: O76.001.001

Start/End Date: 10/20/2015

North: NA

East: NA

Driller: TREC Environmental, Inc

Rig Type: 6620 DT Geoprobe

Borehole Diameter: 2 in

Weather: Cloudy; 50 Deg. F

Comments:

Elevation: 599.897

Datum: NAVD88

Depth to GW:

Depth in	Sample ID	Soil Description	Comments
0	SO-P1-66-0-2in	Silty LOAM	0 ppm Sample at 0-2in and 2-6in intervals collected for Arsenic only.
	SO-P1-66-2-6in		
5		CLAY -dark brown	0 ppm Sample at 6-12in interval collected for Arsenic only.
	SO-P1-66-6-12in		
10		CLAY -brown	0 ppm Sample at 12-18in intervals collected for Arsenic only.
	SO-P1-66-12-18in		
15		CLAY -brown; water saturated	0 ppm Sample at 18-24in intervals collected for Arsenic only.
	SO-P1-66-18-24in		
20			
25			
30			
35			
36.0			

BORING LOG

Page 1 of 1



C&S Engineers, Inc.
141 Elm Street
Buffalo, New York 14203
Phone: 716-847-1630
Fax: 716-847-1454
www.cscos.com

Borehole ID: P1-67

Site Name: Westwood

Site Location: 772 North Forest Road Amherst NY

Project No.: O76.001.001

Start/End Date: 10/20/2015

North: NA

East: NA

Driller: TREC Environmental, Inc

Rig Type: 6620 DT Geoprobe

Borehole Diameter: 2 in

Weather: Cloudy; 50 Deg. F

Comments: 1:00 PM Start

Elevation: 600.191

Datum: NAVD88

Depth to GW:

Depth in	Sample ID	Soil Description	Comments
0	SO-P1-67-0-2in	Silty Loam	0 ppm Sample at 0-2in and 2-6in intervals collected for Arsenic only.
	SO-P1-67-2-6in		
	SO-P1-67-6-12in		
5			
	SO-P1-67-6-12in	CLAY -dark brown	0 ppm Samples at 6-12in, 12-18in, and 18-24in intervals collected for Arsenic only.
10			
	SO-P1-67-12-18	CLAY -brown	0 ppm
15			
	SO-P1-67-18-24		
20			
25			
30			
35			
40			
45.0			

BORING LOG

Page 1 of 1



C&S Engineers, Inc.
 141 Elm Street
 Buffalo, New York 14203
 Phone: 716-847-1630
 Fax: 716-847-1454
 www.cscos.com

Borehole ID: P1-69

Site Name: Westwood

Site Location: 772 North Forest Road Amherst NY

Project No.: O76.001.001

Start/End Date: 10/20/2015

North: NA

East: NA

Driller: TREC Environmental, Inc

Rig Type: 6620 DT Geoprobe

Borehole Diameter: 2 in

Weather: Cloudy; 50 Deg. F

Comments:

Elevation: 601

Datum: NAVD88

Depth to GW:

Depth in	Sample ID	Soil Description	Comments
0	SO-P1-69-0-2in	Silty LOAM	0 ppm Sample at 0-2in and 2-6in intervals collected for Arsenic only.
5	SO-P1-69-2-6in		
		Root	0 ppm Sample at 6-12in interval collected for Arsenic only.
10	SO-P1-69-6-12in	CLAY -brown; some roots	0 ppm Sample at 12-18in and 18-24in intervals collected for Arsenic only.
15	SO-P1-69-12-18in		
20	SO-P1-69-18-24in		
25			
30			
35			
40			
45			
46.0			

BORING LOG

Page 1 of 1



C&S Engineers, Inc.
 141 Elm Street
 Buffalo, New York 14203
 Phone: 716-847-1630
 Fax: 716-847-1454
 www.cscos.com

Borehole ID: Q1-58

Site Name: Westwood

Site Location: 772 North Forest Road Amherst NY

Project No.: O76.001.001

Start/End Date: 10/20/2015

North: NA

East: NA

Driller: TREC Environmental, Inc

Rig Type: 6620 DT Geoprobe

Borehole Diameter: 2 in

Weather: Cloudy; 50 Deg. F

Comments:

Elevation: 599.33

Datum: NAVD88

Depth to GW:

Depth in	Sample ID	Soil Description	Comments
0	SO-Q1-58-0-2in	Silty LOAM	0 ppm Sample at 0-2in and 2-6in intervals collected for Arsenic only.
5	SO-Q1-58-2-6in	CLAY -dark brown	0 ppm Samples at 6-12in interval collected for Arsenic only.
10	SO-Q1-58-6-12in		
15	SO-Q1-58-12-18in	Brick Pieces CLAY -brown	0 ppm Samples at 12-18in and 18-24in intervals collected for Arsenic only.
20	SO-Q1-58-18-24in		
25			
30			
35			
40			
44.0			

BORING LOG

Page 1 of 1



C&S Engineers, Inc.
 141 Elm Street
 Buffalo, New York 14203
 Phone: 716-847-1630
 Fax: 716-847-1454
 www.cscos.com

Borehole ID: Q1-62

Site Name: Westwood

Site Location: 772 North Forest Road Amherst NY

Project No.: O76.001.001

Start/End Date: 10/20/2015

North: NA

East: NA

Driller: TREC Environmental, Inc

Rig Type: 6620 DT Geoprobe

Borehole Diameter: 2 in

Weather: Cloudy; 50 Deg. F

Comments: 1:45 PM Start

Elevation: 599

Datum: NAVD88

Depth to GW:

Depth in	Sample ID	Soil Description	Comments
0	SO-Q1-62-0-2in	SILTY LOAM -dark brown	0 ppm Sample at 0-2in and 2-6in intervals collected for Arsenic only.
	SO-Q1-62-2-6in		
5	SO-Q1-62-6-12in		
10	SO-Q1-62-12-18in	SILT -yellowish brown; trace Clay	0 ppm Samples at 6-12in, 12-18in, and 18-24in intervals collected for Arsenic only.
15	SO-Q1-62-18-24in		
20			
25		CLAY -brown	0 ppm
30			
35			
40			
45.0			

BORING LOG

Page 1 of 1



C&S Engineers, Inc.
141 Elm Street
Buffalo, New York 14203
Phone: 716-847-1630
Fax: 716-847-1454
www.cscos.com

Borehole ID: Q1-65

Site Name: Westwood

Site Location: 772 North Forest Road Amherst NY

Project No.: O76.001.001

Start/End Date: 10/19/2015

North: NA

East: NA

Driller: TREC Environmental, Inc

Rig Type: 6620 DT Geoprobe

Borehole Diameter: 2 in

Weather: Cloudy; 50 Deg. F

Comments:

Elevation: 599.063

Datum: NAVD88

Depth to GW:

Depth in	Sample ID	Soil Description	Comments
0	SO-Q1-65-0-2in	CLAY -dark brown	0 ppm Sample at 0-2in and 2-6in intervals collected for Arsenic only.
5	SO-Q1-65-2-6in		
10	SO-Q1-65-6-12in	CLAY -brown; trace silt	0 ppm Samples at 6-12in interval collected for Arsenic only.
15	SO-Q1-65-12-18in	Silty CLAY -brown; saturated	0 ppm Samples at 12-18in and 18-24in intervals collected for Arsenic only.
20	SO-Q1-65-18-24in		
25		CLAY -light brown	0 ppm
30			
34.0			

BORING LOG

Page 1 of 1



C&S Engineers, Inc.
 141 Elm Street
 Buffalo, New York 14203
 Phone: 716-847-1630
 Fax: 716-847-1454
 www.cscos.com

Borehole ID: Q1-66

Site Name: Westwood

Site Location: 772 North Forest Road Amherst NY

Project No.: O76.001.001

Start/End Date: 10/19/2015

North: NA

East: NA

Driller: TREC Environmental, Inc

Rig Type: 6620 DT Geoprobe

Borehole Diameter: 2 in

Weather: Cloudy; 50 Deg. F

Comments:

Elevation: 599.365

Datum: NAVD88

Depth to GW:

Depth in	Sample ID	Soil Description	Comments
0	SO-Q1-66-0-2in	Silty LOAM	0 ppm Sample at 0-2in and 2-6in intervals collected for Arsenic only.
	SO-Q1-66-2-6in		
5		CLAY -brown	0 ppm Sample at 6-12in interval collected for Arsenic only.
	SO-Q1-66-6-12in		
10		Coarse sand and rocks	0 ppm Samples at 12-18in interval collected for Arsenic only.
	SO-Q1-66-12-18in	Silty CLAY -light brown	0 ppm Samples at 18-24in interval collected for Arsenic only.
15			
	SO-Q1-66-18-24in		
20			
25		CLAY -brown	0 ppm
30			
35			
38.0			

BORING LOG

Page 1 of 2



C&S Engineers, Inc.
141 Elm Street
Buffalo, New York 14203
Phone: 716-847-1630
Fax: 716-847-1454
www.cscos.com

Borehole ID: Q1-67

Site Name: Westwood

Site Location: 772 North Forest Road Amherst NY

Project No.: O76.001.001

Start/End Date: 10/20/2015

North: NA

East: NA

Driller: TREC Environmental, Inc

Rig Type: 6620 DT Geoprobe

Borehole Diameter: 2 in

Weather: Cloudy; 50 Deg. F

Comments: 1:20 PM Start

Elevation: 599.712

Datum: NAVD88

Depth to GW:

Depth in	Sample ID	Soil Description	Comments
0	SO-Q1-67-0-2in	Silty LOAM	0 ppm Sample at 0-2in and 2-6in intervals collected for Arsenic only.
5	SO-Q1-67-2-6in		
		CLAY -dark brown	0 ppm Sample at 6-12in interval collected for Arsenic only.
10	SO-Q1-67-6-12in	CLAY -brown	0 ppm Samples at 6-12in, 12-18in, and 18-24in intervals collected for Arsenic only.
15	SO-Q1-67-12-18in		
20	SO-Q1-67-18-24in		
25			
30			
35			
40			

BORING LOG

Page 2 of 2



C&S Engineers, Inc.
141 Elm Street
Buffalo, New York 14203
Phone: 716-847-1630
Fax: 716-847-1454
www.cscos.com

Borehole ID: Q1-67**Site Name: Westwood****Site Location: 772 North Forest Road Amherst NY****Project No.: O76.001.001****Start/End Date: 10/20/2015**

North: NA

East: NA

Driller: TREC Environmental, Inc**Rig Type: 6620 DT Geoprobe****Borehole Diameter: 2 in****Weather: Cloudy; 50 Deg. F Comments: 1:20 PM Start****Elevation: 599.712****Datum: NAVD88****Depth to GW:**

Depth in	Sample ID	Soil Description	Comments
40 45.0	9-45	CLAY -brown	0 ppm Samples at 6-12in, 12-18in, and 18-24in intervals collected for Arsenic only.

BORING LOG

Page 1 of 2



C&S Engineers, Inc.
 141 Elm Street
 Buffalo, New York 14203
 Phone: 716-847-1630
 Fax: 716-847-1454
 www.cscos.com

Borehole ID: Q1-68

Site Name: Westwood

Site Location: 772 North Forest Road Amherst NY

Project No.: O76.001.001

Start/End Date: 10/19/2015

North: NA

East: NA

Driller: TREC Environmental, Inc

Rig Type: 6620 DT Geoprobe

Borehole Diameter: 2 in

Weather: Cloudy; 50 Deg. F


Comments:

Elevation: 599.762

Datum: NAVD88

Depth to GW:

Depth in	Sample ID	Soil Description	Comments
0	SO-Q1-68-0-2in	Silty LOAM	0 ppm Sample at 0-2in and 2-6in intervals collected for Arsenic only. Field duplicated collected from the 0-2in interval (DUP G).
5	SO-Q1-68-2-6in		
10	SO-Q1-68-6-12in	Silty CLAY -dark brown	0 ppm Samples at 6-12in and 12-18in intervals collected for Arsenic only.
15	SO-Q1-68-12-18in	CLAY -brown	0 ppm Sample at 12-18in interval collected for Arsenic only.
20	SO-Q1-68-18-24in	CLAY -light brown; hard	0 ppm Sample 18-24in interval collected for Arsenic only.
25			
30			
35			
40			

BORING LOG		Page 2 of 2	Borehole ID: Q1-68	
		C&S Engineers, Inc. 141 Elm Street Buffalo, New York 14203 Phone: 716-847-1630 Fax: 716-847-1454 www.cscos.com	Site Name: Westwood	
			Site Location: 772 North Forest Road Amherst NY	
			Project No.: O76.001.001	
			Start/End Date: 10/19/2015	

North: NA		Driller: TREC Environmental, Inc Rig Type: 6620 DT Geoprobe Borehole Diameter: 2 in Weather: Cloudy; 50 Deg. F	Comments:	Elevation: 599.762
East: NA				Datum: NAVD88
				Depth to GW:

Depth in	Sample ID	Soil Description	Comments
40 45 46.0	SO-Q1-68-19-46in	CLAY -light brown; hard	0 ppm Sample 18-24in interval collected for Arsenic only.

BORING LOG

Page 1 of 1



C&S Engineers, Inc.
141 Elm Street
Buffalo, New York 14203
Phone: 716-847-1630
Fax: 716-847-1454
www.cscos.com

Borehole ID: Q1-69

Site Name: Westwood

Site Location: 772 North Forest Road Amherst NY

Project No.: O76.001.001

Start/End Date: 10/20/2015

North: NA

East: NA

Driller: TREC Environmental, Inc

Rig Type: 6620 DT Geoprobe

Borehole Diameter: 2 in

Weather: Cloudy; 50 Deg. F

Comments:

Elevation: 600

Datum: NAVD88

Depth to GW:

Depth in	Sample ID	Soil Description	Comments
0	SO-Q1-69-0-2in	Silty LOAM	0 ppm Sample at 0-2in and 2-6in intervals collected for Arsenic only.
5	SO-Q1-69-2-6in		
10	SO-Q1-69-6-12in	Silty CLAY -brown	0 ppm Sample at 6-12in interval collected for Arsenic only.
15	SO-Q1-69-12-18in	CLAY -brown	0 ppm Sample at 12-18in and 18-24in intervals collected for Arsenic only.
20	SO-Q1-69-18-24in		
25			
30			
35			
40			
44.0			

BORING LOG

Page 1 of 1



C&S Engineers, Inc.
 141 Elm Street
 Buffalo, New York 14203
 Phone: 716-847-1630
 Fax: 716-847-1454
 www.cscos.com

Borehole ID: R1-66

Site Name: Westwood

Site Location: 772 North Forest Road Amherst NY

Project No.: O76.001.001

Start/End Date: 10/20/2015

North: NA

East: NA

Driller: TREC Environmental, Inc

Rig Type: 6620 DT Geoprobe

Borehole Diameter: 2 in

Weather: Cloudy; 50 Deg. F

Comments:

Elevation: 598.74

Datum: NAVD88

Depth to GW:

Depth in	Sample ID	Soil Description	Comments
0	SO-R1-66-0-2in	Silty LOAM	0 ppm Sample at 0-2in and 2-6in intervals collected for Arsenic only.
5	SO-R1-66-2-6in		
		Tree Root	0 ppm
10	SO-R1-66-6-12in	CLAY -dark brown	0 ppm Sample at 6-12in interval collected for Arsenic only.
15	SO-R1-66-12-18in	CLAY -brown; hard	0 ppm Samples at 12-18in and 18-24in intervals collected for Arsenic only.
20	SO-R1-66-18-24in		
25			
30			
35			
40			
45			
48.0			

BORING LOG

Page 1 of 1



C&S Engineers, Inc.
141 Elm Street
Buffalo, New York 14203
Phone: 716-847-1630
Fax: 716-847-1454
www.cscos.com

Borehole ID: R1-67

Site Name: Westwood

Site Location: 772 North Forest Road Amherst NY

Project No.: O76.001.001

Start/End Date: 10/19/2015

North: NA

East: NA

Driller: TREC Environmental, Inc

Rig Type: 6620 DT Geoprobe

Borehole Diameter: 2 in

Weather: Cloudy; 50 Deg. F

Comments:

Elevation: 599.209

Datum: NAVD88

Depth to GW:

Depth in	Sample ID	Soil Description	Comments
0	SO-R1-67-0-2in	Sandy LOAM	0 ppm Sample at 0-2in and 2-6in intervals collected for Arsenic only.
5	SO-R1-67-2-6in		
10	SO-R1-67-6-12in	CLAY -brown; trace Silt	0 ppm Samples at 6-12in and 12-18in intervals collected for Arsenic only.
15	SO-R1-67-12-18in		
20	SO-R1-67-18-24in	CLAY -brown	0 ppm Sample at 18-24in interval collected for Arsenic only.
25			
30			
35			
40			
45			
46.0			

BORING LOG

Page 1 of 2



C&S Engineers, Inc.
 141 Elm Street
 Buffalo, New York 14203
 Phone: 716-847-1630
 Fax: 716-847-1454
 www.cscos.com

Borehole ID: R1-68

Site Name: Westwood

Site Location: 772 North Forest Road Amherst NY

Project No.: O76.001.001

Start/End Date: 10/20/2015

North: NA

East: NA

Driller: TREC Environmental, Inc

Rig Type: 6620 DT Geoprobe

Borehole Diameter: 2 in

Weather: Cloudy; 50 Deg. F

Comments:

Elevation: 599.317

Datum: NAVD88

Depth to GW:

Depth in	Sample ID	Soil Description	Comments
0	SO-R1-68-0-2in	Silty LOAM	0 ppm Sample at 0-2in interval collected for Arsenic only.
5	SO-R1-68-2-6in	CLAY -dark brown	0 ppm Samples at 2-6in and 6-12in intervals collected for Arsenic only.
10	SO-R1-68-6-12in	CLAY -brown	0 ppm Samples at 12-18in and 18-24in intervals collected for Arsenic only.
15	SO-R1-68-12-18in		
20	SO-R1-68-18-24in		
25			
30		Silt -brown; moist	0 ppm
35		CLAY -brown	0 ppm
40			

North: NA	Driller: TREC Environmental, Inc Rig Type: 6620 DT Geoprobe Borehole Diameter: 2 in Weather: Cloudy; 50 Deg. F Comments:	Elevation: 599.317
East: NA		Datum: NAVD88
		Depth to GW:

Depth in	Sample ID	Soil Description	Comments
40 43.0	SO-R1-68-31-43in	CLAY -brown	0 ppm

BORING LOG

Page 1 of 1



C&S Engineers, Inc.
 141 Elm Street
 Buffalo, New York 14203
 Phone: 716-847-1630
 Fax: 716-847-1454
 www.cscos.com

Borehole ID: R1-69

Site Name: Westwood

Site Location: 772 North Forest Road Amherst NY

Project No.: O76.001.001

Start/End Date: 10/20/2015

North: NA

East: NA

Driller: TREC Environmental, Inc

Rig Type: 6620 DT Geoprobe

Borehole Diameter: 2 in

Weather: Cloudy; 50 Deg. F

Comments: 12:30 PM Start

Elevation: 599.664

Datum: NAVD88

Depth to GW:

Depth in	Sample ID	Soil Description	Comments
0	SO-R1-69-0-2in	Silty LOAM	0 ppm Sample at 0-2in and 2-6in intervals collected for Arsenic only.
	SO-R1-69-2-6in		
5		CLAY -dark brown	0 ppm Samples at 6-12in, 12-18in, and 18-24in intervals collected for Arsenic only.
	SO-R1-69-6-12in		
10		CLAY -brown	0 ppm
	SO-R1-69-12-18in		
	SO-R1-69-18-24in		
25			0 ppm
30			0 ppm
35			0 ppm
40		Silt -brown; saturated	0 ppm
44.0			

BORING LOG

Page 1 of 1



C&S Engineers, Inc.
 141 Elm Street
 Buffalo, New York 14203
 Phone: 716-847-1630
 Fax: 716-847-1454
 www.cscos.com

Borehole ID: R1-70

Site Name: Westwood

Site Location: 772 North Forest Road Amherst NY

Project No.: O76.001.001

Start/End Date: 10/20/2015

North: NA

East: NA

Driller: TREC Environmental, Inc

Rig Type: 6620 DT Geoprobe

Borehole Diameter: 2 in

Weather: Cloudy; 50 Deg. F

Comments:

Elevation: 600.093

Datum: NAVD88

Depth to GW:

Depth in	Sample ID	Soil Description	Comments
0	SO-R1-70-0-2in	Silty LOAM -dark brown; trace Clay and organic matter; moist	0 ppm Sample at 0-2in interval collected for Arsenic only.
5	SO-R1-70-2-6in	CLAY -dark brown	0 ppm Samples at 2-6in interval collected for Arsenic only.
10	SO-R1-70-6-12in	CLAY -brown; some Silt; water saturated at 38-41 inch	0 ppm Samples at 6-12in, 12-18in, and 18-24in intervals collected for Arsenic only.
15	SO-R1-70-12-18in		
20	SO-R1-70-18-24in		
25			
30			
35			
40			
42.0			

BORING LOG

Page 1 of 2



C&S Engineers, Inc.
 141 Elm Street
 Buffalo, New York 14203
 Phone: 716-847-1630
 Fax: 716-847-1454
 www.cscos.com

Borehole ID: S1-69

Site Name: Westwood

Site Location: 772 North Forest Road Amherst NY

Project No.: O76.001.001

Start/End Date: 10/20/2015

North: NA

East: NA

Driller: TREC Environmental, Inc

Rig Type: 6620 DT Geoprobe

Borehole Diameter: 2 in

Weather: Cloudy; 50 Deg. F

Comments: 12:00 PM Start

Elevation: 599.242

Datum: NAVD88

Depth to GW:

Depth in	Sample ID	Soil Description	Comments
0	SO-S1-69-0-2in	Silty LOAM CLAY -dark brown	0 ppm
	SO-S1-69-2-6in		0 ppm
	SO-S1-69-6-12in		Sample at 0-2in and 2-6in intervals collected for Arsenic only. Field duplicated collected from the 0-2in interval (DUP H).
5			
10			
	SO-S1-69-12-18in	CLAY -brown	0 ppm
15	SO-S1-69-18-24in		Samples at 6-12in, 12-18in, and 18-24in intervals collected for Arsenic only.
20			
25			
30			
35			
36			

BORING LOG

Page 2 of 2



C&S Engineers, Inc.
141 Elm Street
Buffalo, New York 14203
Phone: 716-847-1630
Fax: 716-847-1454
www.cscos.com

Borehole ID: S1-69**Site Name: Westwood****Site Location: 772 North Forest Road Amherst NY****Project No.: O76.001.001****Start/End Date: 10/20/2015****North: NA****East: NA****Driller: TREC Environmental, Inc****Rig Type: 6620 DT Geoprobe****Borehole Diameter: 2 in****Weather: Cloudy; 50 Deg. F****Comments: 12:00 PM Start****Elevation: 599.242****Datum: NAVD88****Depth to GW:**

Depth in	Sample ID	Soil Description	Comments
36 40 42.0	12-42	CLAY -brown	0 ppm Samples at 6-12in, 12-18in, and 18-24in intervals collected for Arsenic only.

BORING LOG

Page 1 of 2



C&S Engineers, Inc.
141 Elm Street
Buffalo, New York 14203
Phone: 716-847-1630
Fax: 716-847-1454
www.cscos.com

Borehole ID: S1-70

Site Name: Westwood

Site Location: 772 North Forest Road Amherst NY

Project No.: O76.001.001

Start/End Date: 10/20/2015

North: NA

East: NA

Driller: TREC Environmental, Inc

Rig Type: 6620 DT Geoprobe

Borehole Diameter: 2 in

Weather: Cloudy; 50 Deg. F

Comments: 12:00 PM Start

Elevation: 599.579

Datum: NAVD88

Depth to GW:

Depth in	Sample ID	Soil Description	Comments
0	SO-S1-70-0-2in	Silty LOAM	0 ppm Sample at 0-2in interval collected for Arsenic only.
5	SO-S1-70-2-6in	CLAY -dark brown	0 ppm Sample at 2-6in and 6-12in intervals collected for Arsenic only.
10	SO-S1-70-6-12in		
15	SO-S1-70-12-18in	CLAY -brown	0 ppm Samples at 12-18in and 18-24in intervals collected for Arsenic only.
20	SO-S1-70-18-24in		
25			
30			
35			
40			

North: NA
East: NA

Driller: TREC Environmental, Inc

Rig Type: 6620 DT Geoprobe

Borehole Diameter: 2 in

Weather: Cloudy; 50 Deg. F

Elevation: 599.579

Datum: NAVD88

Depth to GW:

Comments: 12:00 PM Start

Depth in	Sample ID	Soil Description	Comments
40 44.0	12-42	CLAY -brown	0 ppm Samples at 12-18in and 18-24in intervals collected for Arsenic only.
	42-44	SILT -brown; moist	0 ppm

BORING LOG

Page 1 of 2



C&S Engineers, Inc.
 141 Elm Street
 Buffalo, New York 14203
 Phone: 716-847-1630
 Fax: 716-847-1454
 www.cscos.com

Borehole ID: S1-71

Site Name: Westwood

Site Location: 772 North Forest Road Amherst NY

Project No.: O76.001.001

Start/End Date: 10/20/2015

North: NA

East: NA

Driller: TREC Environmental, Inc

Rig Type: 6620 DT Geoprobe

Borehole Diameter: 2 in

Weather: Cloudy; 50 Deg. F Comments:

Elevation: 600.134

Datum: NAVD88

Depth to GW:

Depth in	Sample ID	Soil Description	Comments
0	SO-S1-71-0-2in	Sandy LOAM -brown; organic matter; moist; med-fine Sand; trace Silt	0 ppm Sample at 0-2in interval collected for Arsenic only.
5	SO-S1-71-2-6in	CLAY -dark brown; organic matter (roots)	0 ppm Samples at 2-6in and 6-12in intervals collected for Arsenic only.
10	SO-S1-71-6-12in		
15	SO-S1-71-12-18in	Sand and Gravel -dark grey; medium to coarse Sand; sub-round gravel, 1 in CLAY -brown; soft; moist	0 ppm Samples at 12-18in interval collected for Arsenic only. 0 ppm Samples at 12-18in and 18-24in intervals collected for Arsenic only.
20	SO-S1-71-18-24in		
22			

BORING LOG

Page 2 of 2



C&S Engineers, Inc.
141 Elm Street
Buffalo, New York 14203
Phone: 716-847-1630
Fax: 716-847-1454
www.cscos.com

Borehole ID: S1-71**Site Name: Westwood****Site Location: 772 North Forest Road Amherst NY****Project No.: O76.001.001****Start/End Date: 10/20/2015****North: NA****East: NA****Driller: TREC Environmental, Inc****Rig Type: 6620 DT Geoprobe****Borehole Diameter: 2 in****Weather: Cloudy; 50 Deg. F****Comments:****Elevation: 600.134****Datum: NAVD88****Depth to GW:**

Depth in	Sample ID	Soil Description	Comments
22	SO-S1-71-18-24in	CLAY -brown; soft; moist	0 ppm Samples at 12-18in and 18-24in intervals collected for Arsenic only.
25			
30			
35			
40			
43.0			

BORING LOG

Page 1 of 1



C&S Engineers, Inc.
 141 Elm Street
 Buffalo, New York 14203
 Phone: 716-847-1630
 Fax: 716-847-1454
 www.cscos.com

Borehole ID: S1-72

Site Name: Westwood

Site Location: 772 North Forest Road Amherst NY

Project No.: O76.001.001

Start/End Date: 10/20/2015

North: NA

East: NA

Driller: TREC Environmental, Inc

Rig Type: 6620 DT Geoprobe

Borehole Diameter: 2 in

Weather: Cloudy; 50 Deg. F

Comments:

Elevation: 600.66

Datum: NAVD88

Depth to GW:

Depth in	Sample ID	Soil Description	Comments
0	SO-S1-72-0-2in	Sandy Loam -brown; moist; trace Silt	0 ppm Sample at 0-2in interval collected for Arsenic only. Field duplicated collected from the 0-2in interval (DUP I).
5	SO-S1-72-2-6in	CLAY -dark grey; soft; moist	0 ppm Samples at 2-6in and 6-12in intervals collected for Arsenic only.
10	SO-S1-72-6-12in		
15	SO-S1-72-12-18in	GRAVEL -grey; rounded; moist	0 ppm Sample at 12-18in interval collected for Arsenic only.
20	SO-S1-72-18-24in	CLAY -dark brown; moist; dense	0 ppm Sample at 18-24 interval collected for Arsenic only.
25			
30			
35			
36.0			

BORING LOG

Page 1 of 1



C&S Engineers, Inc.
 141 Elm Street
 Buffalo, New York 14203
 Phone: 716-847-1630
 Fax: 716-847-1454
 www.cscos.com

Borehole ID: T1-66

Site Name: Westwood

Site Location: 772 North Forest Road Amherst NY

Project No.: O76.001.001

Start/End Date: 10/20/2015

North: NA

East: NA

Driller: TREC Environmental, Inc

Rig Type: 6620 DT Geoprobe

Borehole Diameter: 2 in

Weather: Cloudy; 50 Deg. F

Comments:

Elevation: 598.13

Datum: NAVD88

Depth to GW:

Depth in	Sample ID	Soil Description	Comments
0	SO-T1-66-0-2in	CLAY -dark brown	0 ppm Sample at 0-2in and 2-6in intervals collected for Arsenic only. Field duplicated collected from the 0-2in interval (DUP B).
	SO-T1-66-2-6in		
	SO-T1-66-6-12in		
5		CLAY -brown	0ppm Sample at 12-18in interval collected for Arsenic only.
	SO-T1-66-12-18in		
10		SILT -brown; moist	0ppm Sample at 18-24in interval collected for Arsenic only.
	SO-T1-66-18-24in		
15		CLAY -brown	0ppm Sample at 18-24in interval collected for Arsenic only.
20		CLAY -brown	0ppm Sample at 18-24in interval collected for Arsenic only.
25		CLAY -brown	0ppm Sample at 18-24in interval collected for Arsenic only.
30		CLAY -brown	0ppm Sample at 18-24in interval collected for Arsenic only.
35		CLAY -brown	0ppm Sample at 18-24in interval collected for Arsenic only.
40		CLAY -brown	0ppm Sample at 18-24in interval collected for Arsenic only.
43.0		CLAY -brown	0ppm Sample at 18-24in interval collected for Arsenic only.

BORING LOG

Page 1 of 2



C&S Engineers, Inc.
 141 Elm Street
 Buffalo, New York 14203
 Phone: 716-847-1630
 Fax: 716-847-1454
 www.cscos.com

Borehole ID: T1-71

Site Name: Westwood

Site Location: 772 North Forest Road Amherst NY

Project No.: O76.001.001

Start/End Date: 10/20/2015

North: NA

East: NA

Driller: TREC Environmental, Inc

Rig Type: 6620 DT Geoprobe

Borehole Diameter: 2 in

Weather: Cloudy; 50 Deg. F

Comments:

Elevation: 600.293

Datum: NAVD88

Depth to GW:

Depth in	Sample ID	Soil Description	Comments
0	SO-T1-71-0-2in	Sandy LOAM	0 ppm Sample at 0-2in interval collected for Complete List only.
5	SO-T1-71-2-6in	CLAY -dark brown	0 ppm Samples at 2-6in and 6-12in intervals collected for Arsenic only.
10	SO-T1-71-6-12in	Sand and Gravel	0 ppm Sample at 6-12in interval collected for Arsenic only.
15	SO-T1-71-12-18in	CLAY -brown; water saturated 34-39 inch	0 ppm Samples at 12-18in and 18-24in intervals collected for Arsenic only.
20	SO-T1-71-18-24in		
22			

BORING LOG

Page 2 of 2



C&S Engineers, Inc.
141 Elm Street
Buffalo, New York 14203
Phone: 716-847-1630
Fax: 716-847-1454
www.cscos.com

Borehole ID: T1-71

Site Name: Westwood

Site Location: 772 North Forest Road Amherst NY

Project No.: O76.001.001

Start/End Date: 10/20/2015

North: NA

East: NA

Driller: TREC Environmental, Inc

Rig Type: 6620 DT Geoprobe

Borehole Diameter: 2 in

Weather: Cloudy; 50 Deg. F

Comments:

Elevation: 600.293

Datum: NAVD88

Depth to GW:

Depth in	Sample ID	Soil Description	Comments
22	SO-T1-71-18-24in	CLAY -brown; water saturated 34-39 inch	0 ppm Samples at 12-18in and 18-24in intervals collected for Arsenic only.
25			
30			
35			
40			
41.0			

BORING LOG

Page 1 of 1



C&S Engineers, Inc.
 141 Elm Street
 Buffalo, New York 14203
 Phone: 716-847-1630
 Fax: 716-847-1454
 www.cscos.com

Borehole ID: T1-72

Site Name: Westwood

Site Location: 772 North Forest Road Amherst NY

Project No.: O76.001.001

Start/End Date: 10/20/2015

North: NA

East: NA

Driller: TREC Environmental, Inc

Rig Type: 6620 DT Geoprobe

Borehole Diameter: 2 in

Weather: Cloudy; 50 Deg. F

Comments:

Elevation: 601.139

Datum: NAVD88

Depth to GW:

Depth in	Sample ID	Soil Description	Comments
0	SO-T1-72-0-2in	Sandy LOAM	0 ppm Sample at 0-2in and 2-6in intervals collected for Arsenic only.
5	SO-T1-72-2-6in	CLAY -dark brown	0 ppm Samples at 6-12in, 12-18in collected for Arsenic only.
10	SO-T1-72-6-12in		
15	SO-T1-72-12-18in		
		Sand and Gravel	0 ppm
20	SO-T1-72-18-24in	Clay -brown	0 ppm Sample at 18-24in interval collected for Arsenic only.
25			
30			
35			
39.0			

BORING LOG

Page 1 of 1



C&S Engineers, Inc.
 141 Elm Street
 Buffalo, New York 14203
 Phone: 716-847-1630
 Fax: 716-847-1454
 www.cscos.com

Borehole ID: U1-70

Site Name: Westwood

Site Location: 772 North Forest Road Amherst NY

Project No.: O76.001.001

Start/End Date: 10/20/2015

North: NA

East: NA

Driller: TREC Environmental, Inc

Rig Type: 6620 DT Geoprobe

Borehole Diameter: 2 in

Weather: Cloudy; 50 Deg. F

Comments: 2:20 PM Start

Elevation: 598.57

Datum: NAVD88

Depth to GW:

Depth in	Sample ID	Soil Description	Comments
0	SO-U1-70-0-2in	CLAY -dark brown	0 ppm Sample at 0-2in and 2-6in intervals collected for Arsenic only.
	SO-U1-70-2-6in		
5	SO-U1-70-6-12in		
10	SO-U1-70-12-18in	CLAY -brown	0 ppm Samples at 6-12in, 12-18in, and 18-24in intervals collected for Arsenic only.
15	SO-U1-70-18-24in		
20			
25		SILT -saturated; trace Clay	0 ppm
30			
35			
40		SAND -brown; fine; saturated	0 ppm
41.0			

BORING LOG

Page 1 of 1



C&S Engineers, Inc.
 141 Elm Street
 Buffalo, New York 14203
 Phone: 716-847-1630
 Fax: 716-847-1454
 www.cscos.com

Borehole ID: U1-75

Site Name: Westwood

Site Location: 772 North Forest Road Amherst NY

Project No.: O76.001.001

Start/End Date: 10/20/2015

North: NA

East: NA

Driller: TREC Environmental, Inc

Rig Type: 6620 DT Geoprobe

Borehole Diameter: 2 in

Weather: Cloudy; 50 Deg. F

Comments:

Elevation: 602

Datum: NAVD88

Depth to GW:

Depth in	Sample ID	Soil Description	Comments
0	SO-U1-75-0-2in	Silty LOAM	0 ppm Sample at 0-2in intervals collected for Arsenic only.
5	SO-U1-75-2-6in	GRAVEL-dark grey; 0.25in-1in angular; moist some Silt and medium Sand	0 ppm Samples at 2-6in, 6-12in, and 12-18in intervals collected for Arsenic only.
10	SO-U1-75-6-12in		
15	SO-U1-75-12-18in		
20	SO-U1-75-18-24in	Black SILT trace Clay; moist	0 ppm Samples at 18-24in interval collected for Arsenic only.
25		Grey CLAY; moist; soft	0 ppm
30.0			