

PA LAB I.D. 25-067  
NY LAB I.D. 10121  
VA LAB I.D. 00209  
MA LAB I.D. PA087



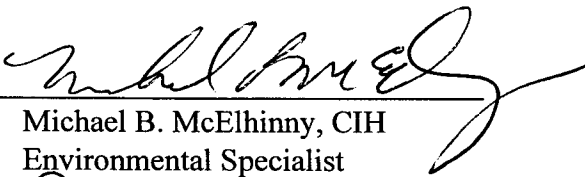
PHASE I  
ENVIRONMENTAL SITE ASSESSMENT

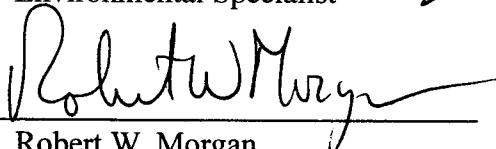
North Parking Lot  
Ellicott and Virginia Streets  
Buffalo, NY 14203

W.O. # 9904 - 00893

Inspection Date: January 12 & April 7, 1999

Assessment Performed for:  
Steve McGarvey  
Signature Management Group  
1301 French Street  
Erie, PA 16501

Assessment Performed by:   
Michael B. McElhinny, CIH  
Environmental Specialist

Assessment Reviewed by:   
Robert W. Morgan  
Sr. Vice President

PHASE I  
ENVIRONMENTAL SITE ASSESSMENT  
TABLE OF CONTENTS

	<u>PAGES</u>
1.0 <u>Introduction</u>	1
1.1 Executive Summary	2
1.2 Assessment Description	3
1.3 Assessment Methodology	3
1.3.1 Objective	3
1.3.2 Scope	4
1.3.3 Limitations	4
2.0 <u>Site &amp; Operation Observations</u>	5
2.1 Topographic Map	6
2.2 Site Sketch	7
2.3 Street Map	8
2.4.1 Sanborn Maps	9 – 14
2.4.2 City of Buffalo Plot Plans	15 - 17
2.5 Environmental Conditions	18
2.5.1 Chemicals (Use & Storage)	18
2.5.2 Polychlorinated Biphenyls (PCB's)	18
2.5.3 Asbestos	19
2.5.4 Other Potentially Hazardous Substances	19
2.5.5 Hazardous Wastes & Other Waste Streams	19
2.5.6 Gases & Air Emissions	19
2.5.7 Underground & Aboveground Storage Tanks	19
2.5.8 Wetlands	19
3.0 <u>Site History</u>	20
3.1 Review of Historical Documents	20
3.2 Review of Photography (Aerial)	20
3.3 Interviews with Appropriate Persons	20
3.4 Adjacent Site History	20
4.0 <u>Regulatory Agency Review</u>	21
4.1 EPA National Priorities & CERCLIS Lists	21-23
4.2 Regulatory Compliance, Inspections, Violations	23
4.3 Permits Review	23
5.0 <u>Conclusions/Recommendations</u>	24
5.1 Sampling & Analysis Recommendations (Cost Estimates)	24
5.2 Remediation Discussion (Cost Estimates)	24
6.0 <u>Resume</u>	
7.0 <u>Photographs</u>	
8.0 <u>Attachments</u>	
I:\word\mbm\North Parking lot Buffalo – signature management	

## 1.0 Introduction

At the request of Steve McGarvey of the Signature Management Group, 1301 French Street, Erie, PA , the following Phase I Environmental Site Assessment was performed by Microbac Laboratories, Inc. The site reviewed is the northern portion of the Trico Parking lot located at the southeast corner of Ellicott and Virginia Streets in Buffalo, New York. For the purpose of this report, the site will identified as the North Parking Area.

The purpose of this Phase I Environmental Site Assessment is to learn of observable environmental hazards and/or environmental liabilities associated with this site since the last Phase I Environmental Site Assessment was performed by Occupational Safety & Environmental Associates, Inc. in November of 1994. This report is to consolidate all the Environmental Site Assessments performed previously at the site. This includes the previous Phase I and subsequent Phase II Investigation performed by Conestoga-Rovers & Associates (Soil and Groundwater Invetigation) in November of 1994.

The assessment update was performed by Michael B. McElhinny, CIH, Environmental Specialist for Microbac Laboratories, Inc./Erie Division on January 12, 1999 and April 7, 1999. Site observations were recorded and photo documentation made.

1.1 Executive Summary - Phase I Environmental Site Assessment

Site: North Parking Lot, Southeast Corner of Ellicott and Virginia Streets, Buffalo, New York

Based on the objective, scope and limitations of this report, the following conclusions are made:

[ X ] We have performed a Phase I Environmental Site Assessment in conformance with the scope and limitations of ASTM Practice E 1527 at the above mentioned property. Any exceptions to or deviations from this practice are described in Section 1.3.3 of this report. This assessment has revealed evidence of recognized environmental conditions in connection with the property, please note the following:

- A. The site is a paved parking lot located in a mixed use section of Buffalo, New York. Little or no environmental concerns are associated with the site currently, however past usage includes a Buffalo Electric Sub-station and a Niagara Mohawk Sub-station. Polychlorinated biphenyl contamination of the soil and or groundwater under this portion of the site was a concern. A sub-surface investigation was performed in 1994 which included four bore holes and one monitoring well were installed in the approximate location of the sub-station. This subsequent soil and water analyses revealed PCB contamination under the regulatory levels. Readings were found to be under one part per million.

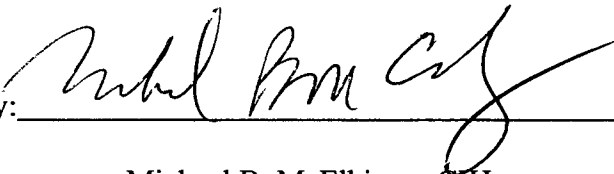
1.1a) Additional Sampling & Testing

No additional sampling or testing is needed at this time.

1.1b) Remedial Action

No remedial action is deemed warranted at this time.

Submitted by: \_\_\_\_\_



Michael B. McElhinny, CIH  
Environmental Specialist

Effective Date: \_\_\_\_\_

4/8/99

## 1.2 Assessment Description

For the purposes of this Phase I the property is defined as the northern portion of the parking lot for the Trico and SoftBank Buildings. The north end of the parking lot is paved, while the southern half used by Trico is not completely paved.

The property is bounded by Virginia Street on the north, North Oak on the east, Ellicott on the west and the former city street, Burton, on the south.

## 1.3 Assessment Methodology

The following objective, scope and limitations define the assessment as requested by Steve McGarvey of the Signature Management Group. If information listed in the table of contents or the methodology are not provided, it was omitted for one (or more) of the following reasons:

- 1) Not requested by client
- 2) Not made available to Microbac Laboratories
- 3) Unable to complete within the time frame requested by client

Reasons for omission will be documented.

### 1.3.1 Objective

The objective of this Phase I Site Assessment is to determine the probable presence of environmentally hazardous materials through a visual inspection of the site, noting the appearance of any environmental conditions. In addition, the assessment will help determine if any environmental liabilities exist, e.g. underground storage tanks or impoundments, and if any environmental limitations exist, e.g. wetlands or historical sites. This determination was to be made using the existing information and previous performed site assessments.

### 1.3.2 Scope

The scope of this assessment is limited to the visual observations of the inspecting specialist. Normally, no sampling or analysis is part of a Phase I Assessment. The assessment procedure consists of a walk-through of the entire property to determine the following:

- 1) presence of chemical use and storage
- 2) probable presence of Polychlorinated Biphenyls (PCB's)
- 3) probable presence of asbestos
- 4) probable presence of other potentially hazardous substances
- 5) probable presence of hazardous wastes and other waste streams
- 6) probable presence of hazardous gases and air emissions
- 7) probable presence of underground and aboveground storage tanks
- 8) presence of wetlands
- 9) review of site history
- 10) review of regulatory agency information

### 1.3.3 Limitations

This report has been prepared for the exclusive use of Steve McGarvey of the Signature Management Group and nothing in this report is expressly or intended to benefit any third party.

This work has been performed in accordance with generally accepted environmental science practices. No other warranty, expressed or implied, is made. Our conclusions and recommendations are based on our observations at the site, the review of available documents and our previous experience in this discipline. Documents and information obtained from interviews were accepted at face value. The conclusions and recommendations do not reflect variations in site conditions not visually apparent to the inspectors or which may exist outside of sample locations. Should such variations become apparent during development, it would be appropriate to reevaluate conditions as they present themselves.

ASTM Practice E1527-97 specifically excludes radon, asbestos, lead paint and lead in drinking water. Incorporated into this report are overviews of each of these topics. Since structures do not occupy the site, these environmental limiting concerns are not currently significant.

## 2.0 Site and Operation Observations

On January 12 and April 7, 1999, Michael McElhinny, CIH, Environmental Specialist for Microbac Laboratories, Inc. conducted a visual walk through of the North Parking Lot.

Weather conditions were mild and sunny.

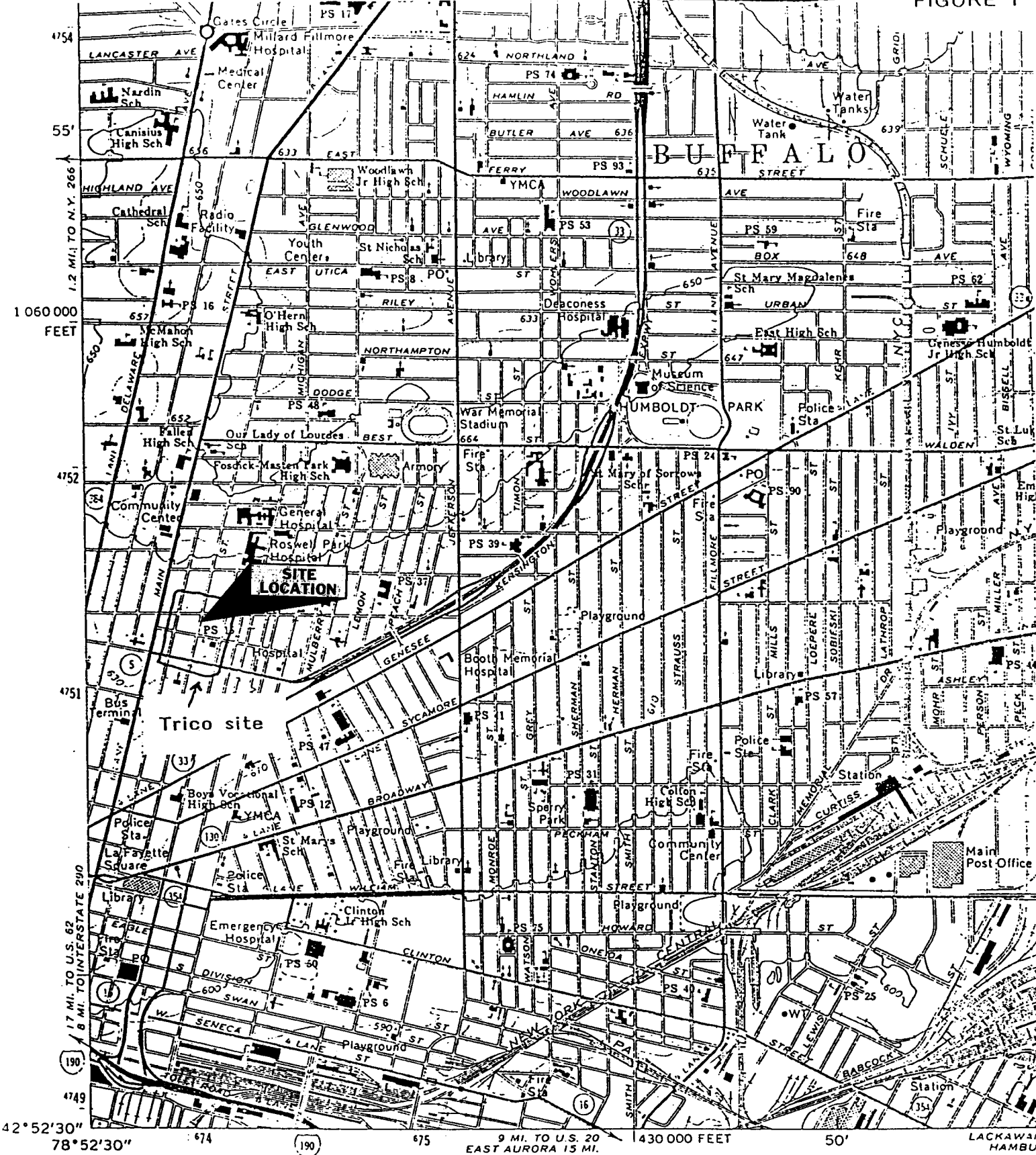
During the course of the inspection, the following observations were made:

- ❖ The parking area appears to be well maintained with a fairly recent application of asphalt. The northern parking lot is in better condition than the southern end.
- ❖ A ten foot high chain link fence runs around the entire perimeter of the parking lot. Access can be gained off Ellicott Street or North Oak.

The following maps, site sketch and site characterization forms supply additional information.

# **TOPOGRAPHIC MAP**





Mapped, edited, and published by the Geological Survey in cooperation with New York Department of Public Works

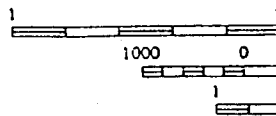
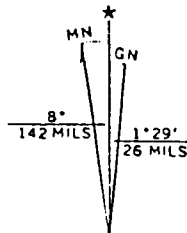
Control by USGS, USC&GS, USCE, and U.S. Lake Surv

Planimetry compiled by U.S. Corps of Engineers from aerial photographs taken 1942. Topography by planetable surveys 1948. Revised 1965

Polyconic projection. 1927 North American datum 10,000-foot grid based on New York coordinate system, west zone 1000-meter Universal Transverse Mercator grid ticks, zone 17, shown in blue

Red tint indicates areas in which only landmark buildings are shown

-6-



UTM GRID AND 1955 MAGNETIC NORTH DECLINATION AT CENTER OF SHEET

# **SITE SKETCH**

CTS CORPORATION

STREET

ALLEY

STREET

BOARD OF  
EDUCATION  
GARAGE

1,000 GAL.  
GAS TANK

ELLICOTT STREET

PARKING  
LOT

STREET

MORTON

PLACE

BH-2/  
MW-1

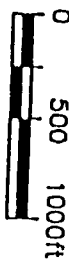
BH-3

BH-4

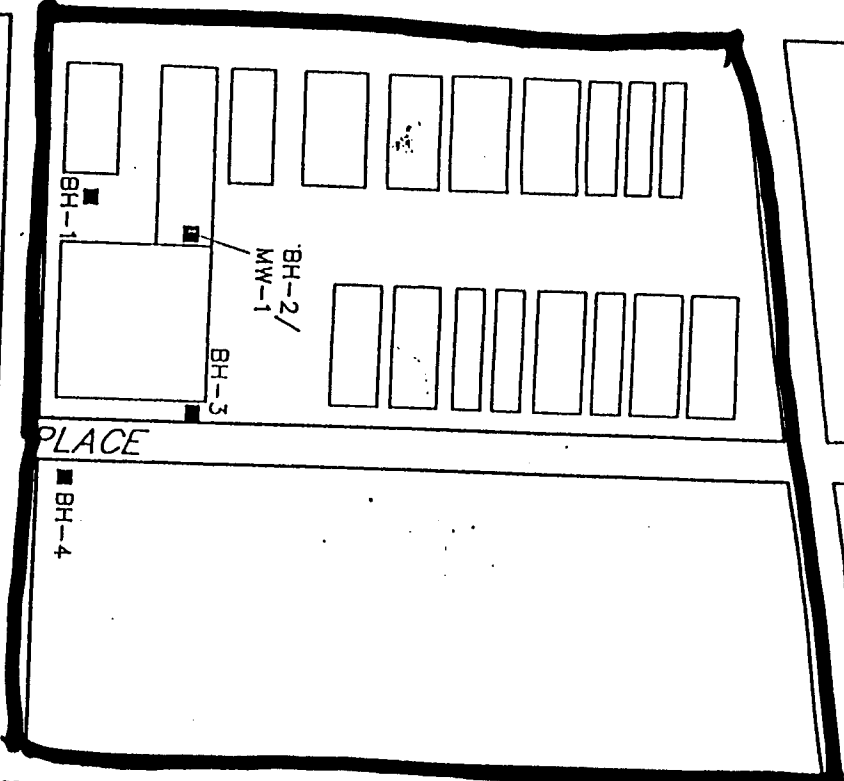
OAK STREET

LEGEND

■ BOREHOLE LOCATION



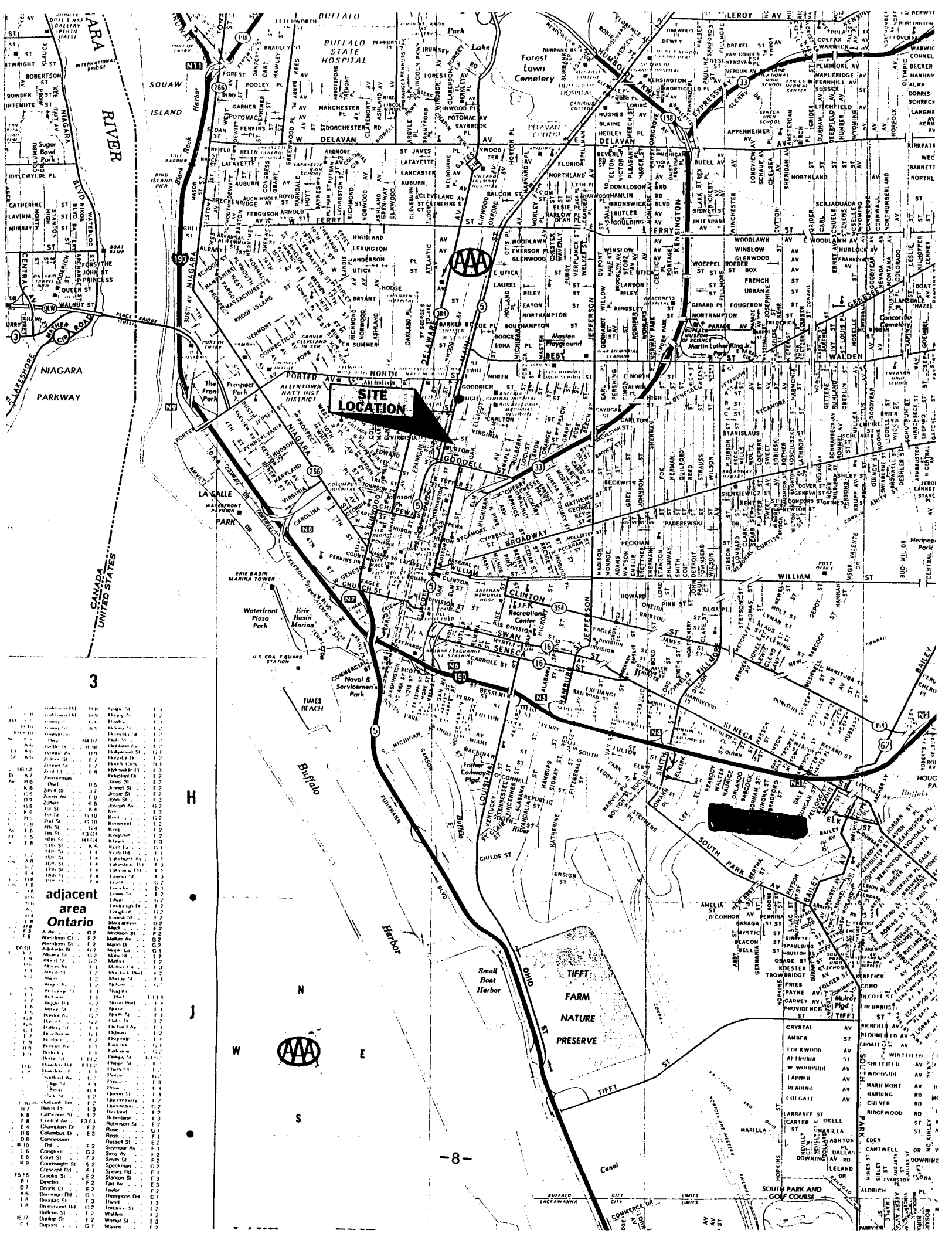
Site



BH-6 5/11/83

**CITY OF BUFFALO**

**STREET MAP**



**SITE LOCATION**

3

H

adjacent area Ontario

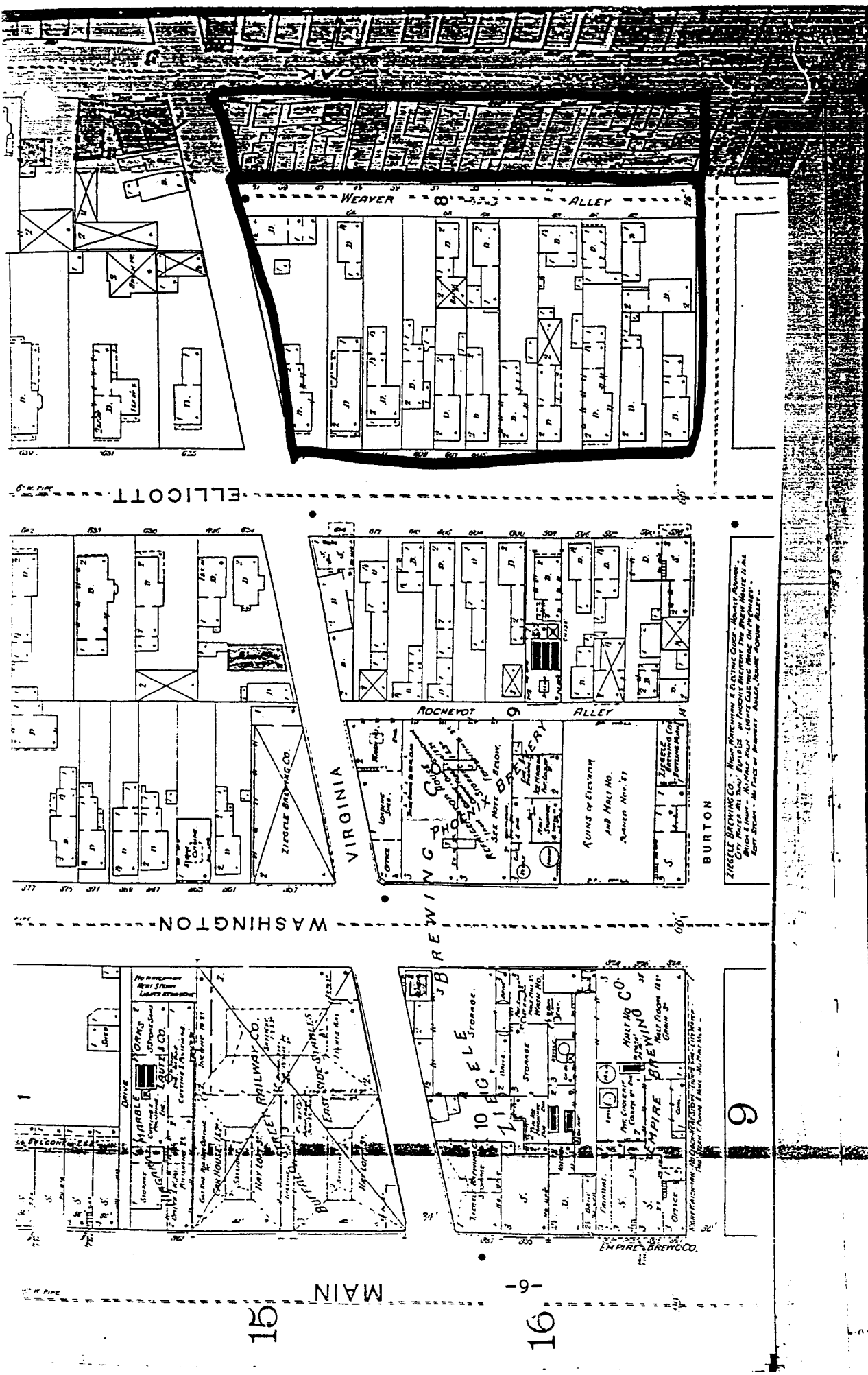
A-1	1st St	1st St
A-2	2nd St	2nd St
A-3	3rd St	3rd St
A-4	4th St	4th St
A-5	5th St	5th St
A-6	6th St	6th St
A-7	7th St	7th St
A-8	8th St	8th St
A-9	9th St	9th St
A-10	10th St	10th St
A-11	11th St	11th St
A-12	12th St	12th St
A-13	13th St	13th St
A-14	14th St	14th St
A-15	15th St	15th St
A-16	16th St	16th St
A-17	17th St	17th St
A-18	18th St	18th St
A-19	19th St	19th St
A-20	20th St	20th St
A-21	21st St	21st St
A-22	22nd St	22nd St
A-23	23rd St	23rd St
A-24	24th St	24th St
A-25	25th St	25th St
A-26	26th St	26th St
A-27	27th St	27th St
A-28	28th St	28th St
A-29	29th St	29th St
A-30	30th St	30th St
A-31	31st St	31st St
A-32	32nd St	32nd St
A-33	33rd St	33rd St
A-34	34th St	34th St
A-35	35th St	35th St
A-36	36th St	36th St
A-37	37th St	37th St
A-38	38th St	38th St
A-39	39th St	39th St
A-40	40th St	40th St
A-41	41st St	41st St
A-42	42nd St	42nd St
A-43	43rd St	43rd St
A-44	44th St	44th St
A-45	45th St	45th St
A-46	46th St	46th St
A-47	47th St	47th St
A-48	48th St	48th St
A-49	49th St	49th St
A-50	50th St	50th St
A-51	51st St	51st St
A-52	52nd St	52nd St
A-53	53rd St	53rd St
A-54	54th St	54th St
A-55	55th St	55th St
A-56	56th St	56th St
A-57	57th St	57th St
A-58	58th St	58th St
A-59	59th St	59th St
A-60	60th St	60th St
A-61	61st St	61st St
A-62	62nd St	62nd St
A-63	63rd St	63rd St
A-64	64th St	64th St
A-65	65th St	65th St
A-66	66th St	66th St
A-67	67th St	67th St
A-68	68th St	68th St
A-69	69th St	69th St
A-70	70th St	70th St
A-71	71st St	71st St
A-72	72nd St	72nd St
A-73	73rd St	73rd St
A-74	74th St	74th St
A-75	75th St	75th St
A-76	76th St	76th St
A-77	77th St	77th St
A-78	78th St	78th St
A-79	79th St	79th St
A-80	80th St	80th St
A-81	81st St	81st St
A-82	82nd St	82nd St
A-83	83rd St	83rd St
A-84	84th St	84th St
A-85	85th St	85th St
A-86	86th St	86th St
A-87	87th St	87th St
A-88	88th St	88th St
A-89	89th St	89th St
A-90	90th St	90th St
A-91	91st St	91st St
A-92	92nd St	92nd St
A-93	93rd St	93rd St
A-94	94th St	94th St
A-95	95th St	95th St
A-96	96th St	96th St
A-97	97th St	97th St
A-98	98th St	98th St
A-99	99th St	99th St
A-100	100th St	100th St

W E

AAA

8

# SANBORN MAPS

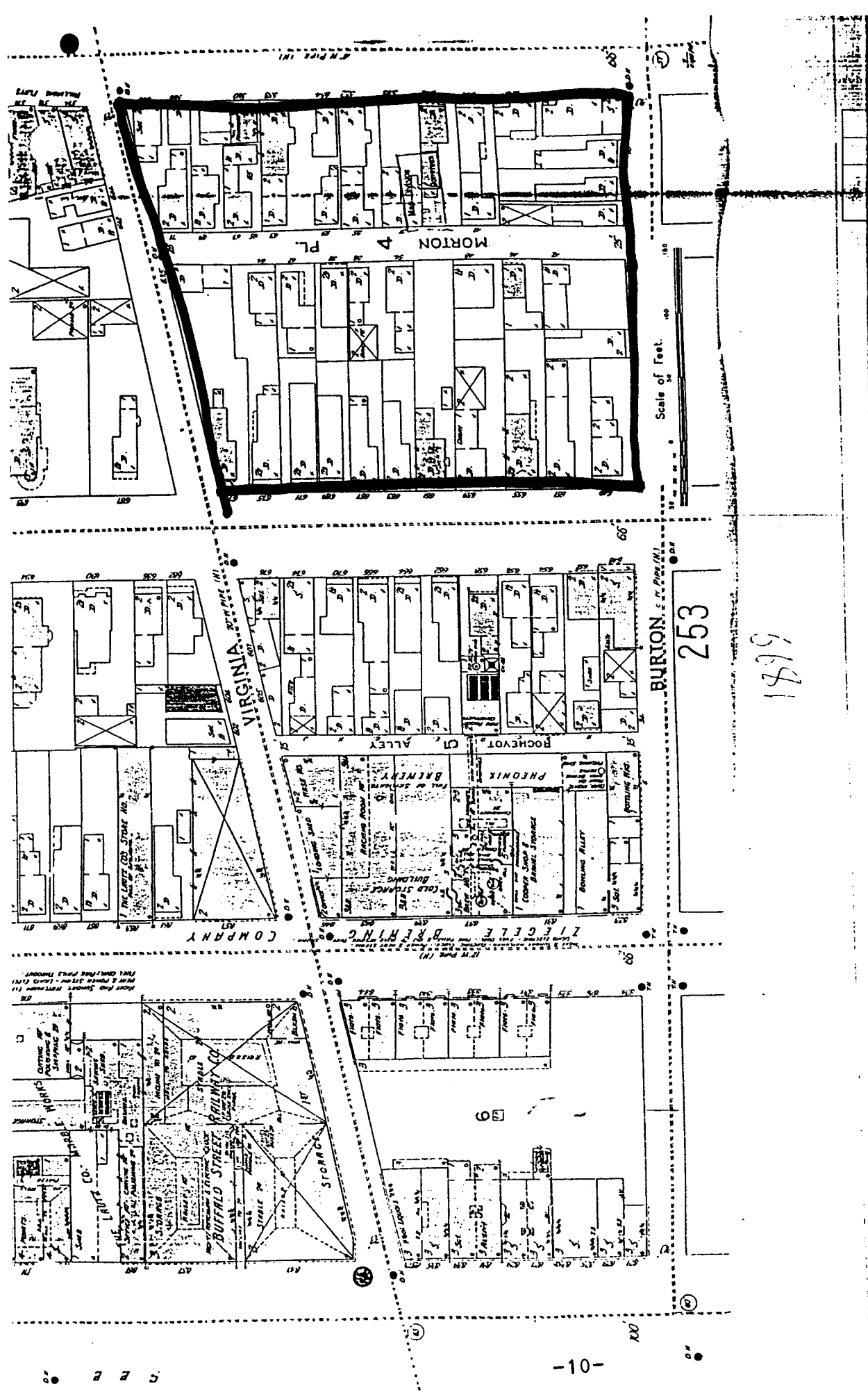


# Environmental Risk Information & Imaging Services ERIS

505 HUNTMAR PARK DRIVE, SUITE 200 • HERNDON, VA 20170 • 703-834-0600 • 1-800-989-0403 • FAX: 703-834-0606

THE REPRODUCTION OF THE SANBORN FIRE INSURANCE MAPS HAS BEEN MADE BY PERMISSION OF EDR SANBORN, INC. THE COPYRIGHT HOLDER, IN ACCORDANCE WITH THE TERMS AND CONDITIONS OF AN AGREEMENT BETWEEN ENVIRONMENTAL RISK INFORMATION & IMAGING SERVICES AND EDR SANBORN, INC. DATED AUGUST 1, 1991. EDR SANBORN, INC. MAKES NO REPRESENTATIONS OR WARRANTIES OF ANY KIND, EXPRESS OR IMPLIED, WITH REGARD TO THE SANBORN MAPS, INCLUDING WITHOUT LIMITATION WARRANTIES OF MERCHANTABILITY OR FITNESS FOR A PARTICULAR PURPOSE. SANBORN AND SANBORN MAPS ARE TRADEMARKS OF EDR SANBORN, INC. THE MANUFACTURERS' MUTUAL MAPS ARE THE PROPERTY OF THE EDISON INSTITUTE, DEARBORN, MICHIGAN, AND MAY NOT BE FURTHER REPRODUCED WITHOUT PERMISSION.

1589



# Environmental Risk Information & Imaging Services **ERIS**

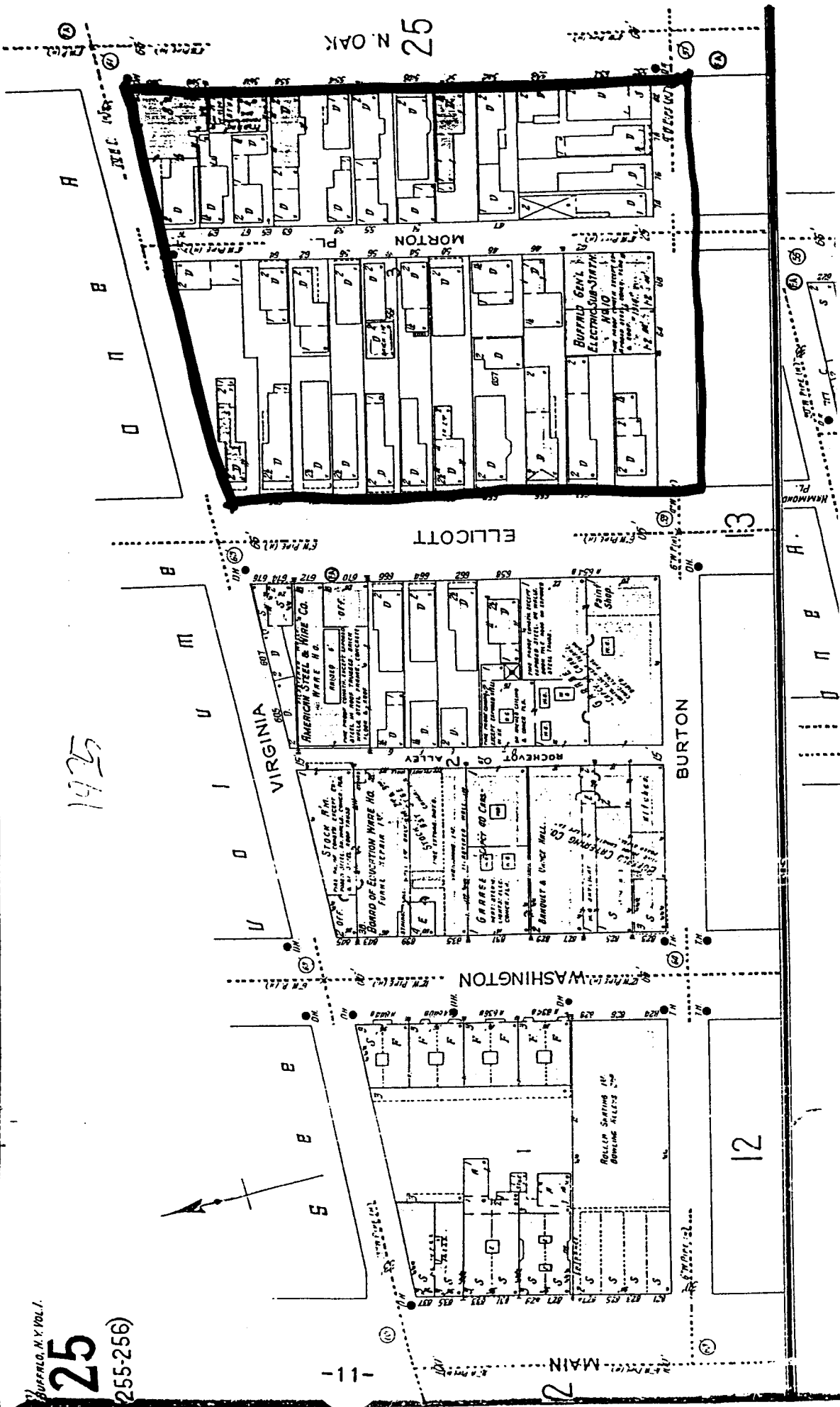
505 HUNTMAR PARK DRIVE, SUITE 200 • HERNDON, VA 20170 • 703-834-0600 • 1-800-989-0403 • FAX: 703-834-0606

THE REPRODUCTION OF THE SANBORN FIRE INSURANCE MAPS HAS BEEN MADE BY PERMISSION OF EDR SANBORN, INC., THE COPYRIGHT HOLDER, IN ACCORDANCE WITH THE TERMS AND CONDITIONS OF AN AGREEMENT BETWEEN ENVIRONMENTAL RISK INFORMATION & IMAGING SERVICES AND EDR SANBORN, INC. DATED AUGUST 1, 1991. EDR SANBORN, INC. MAKES NO REPRESENTATIONS OR WARRANTIES OF ANY KIND, EXPRESS OR IMPLIED, WITH REGARD TO THE SANBORN MAPS, INCLUDING WITHOUT LIMITATION WARRANTIES OF MERCHANTABILITY OR FITNESS FOR A PARTICULAR PURPOSE. SANBORN AND SANBORN MAPS ARE TRADEMARKS OF EDR SANBORN, INC. THE MANUFACTURERS' MUTUAL MAPS ARE THE PROPERTY OF THE EDISON INSTITUTE, DEARBORN, MICHIGAN, AND MAY NOT BE FURTHER REPRODUCED WITHOUT PERMISSION.



BUFFALO, N. Y. VOL. I.  
**25**  
255-256

1975



25  
N. OAK

12

A

B

B

B

M

U

VIRGINIA

ROCHESTER ALLEY

BOARD OF EDUCATION WIRE HQ

STOCK FIN

AMERICAN STEEL & WIRE CO.

WASH

WASHINGTON

EL LICOTT

MORTON

BURTON

MAIN

ROLLERS SORTING HALL

BOWLING ALLEYS

12

2

11

10

9

8

7

6

5

4

3

2

1

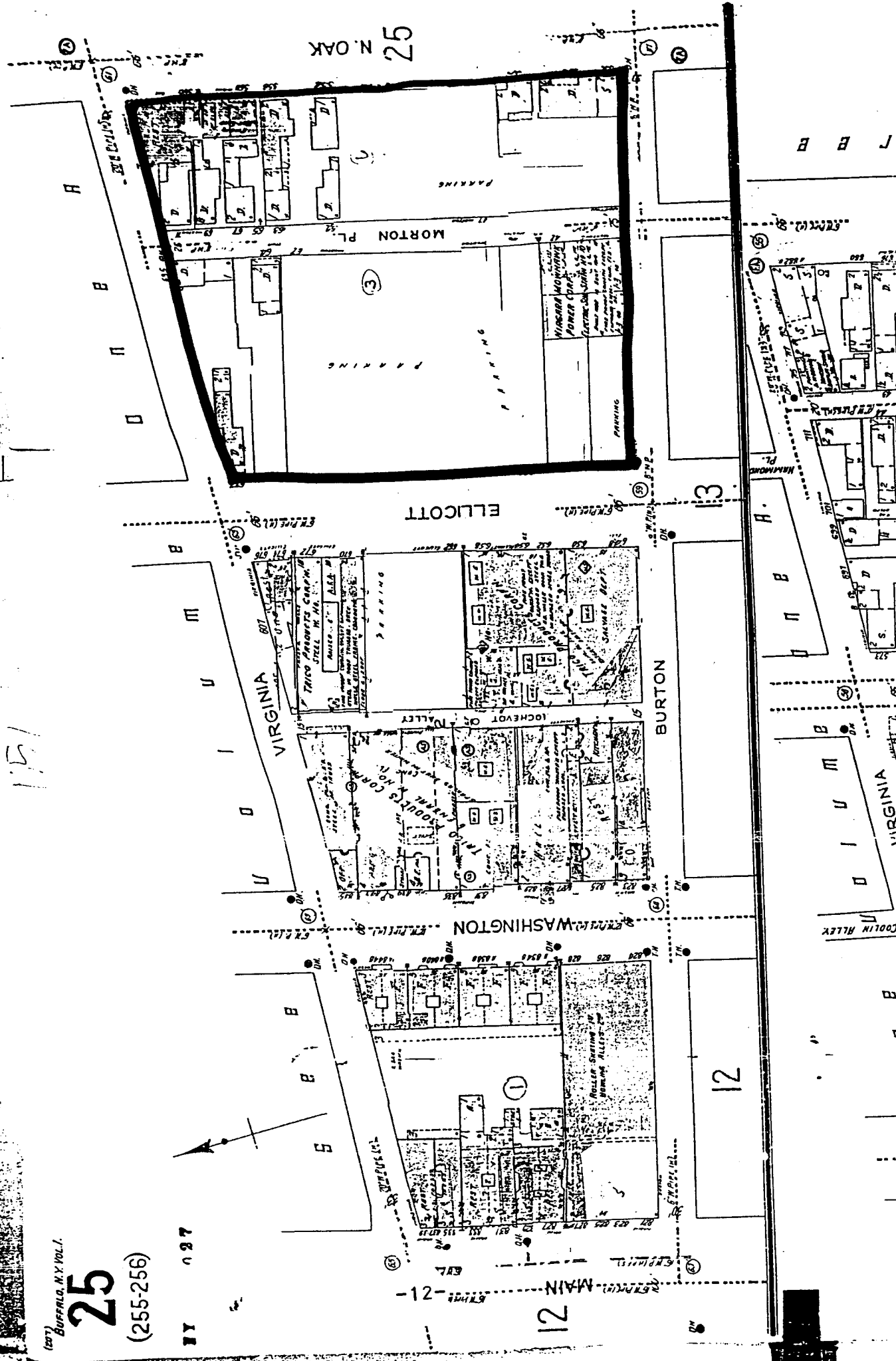
(CITY) BUFFALO, N.Y. VOL. I.

25

(255-256)

BY 027

151



25 N. OAK

13

BURTON

WASHINGTON

MAIN - 21 -

12

12

VIRGINIA

H.

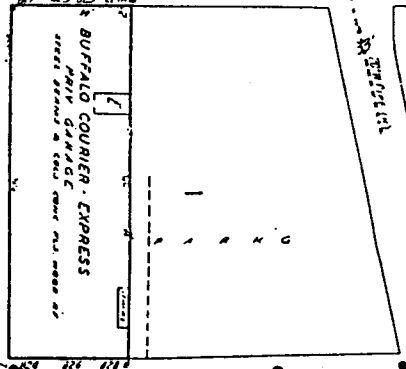
J B B

BUFFALO, N.Y. VOL. I  
25

-13-

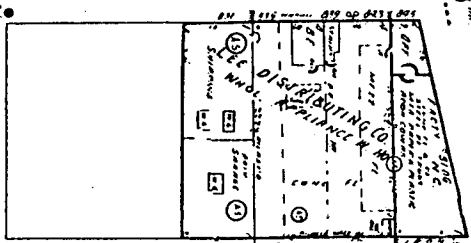
12

MAIN



12

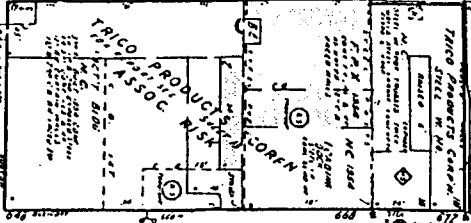
WASHINGTON



VIRGINIA  
SEE VOLUME ONE A

ROCHEVOY

BURTON



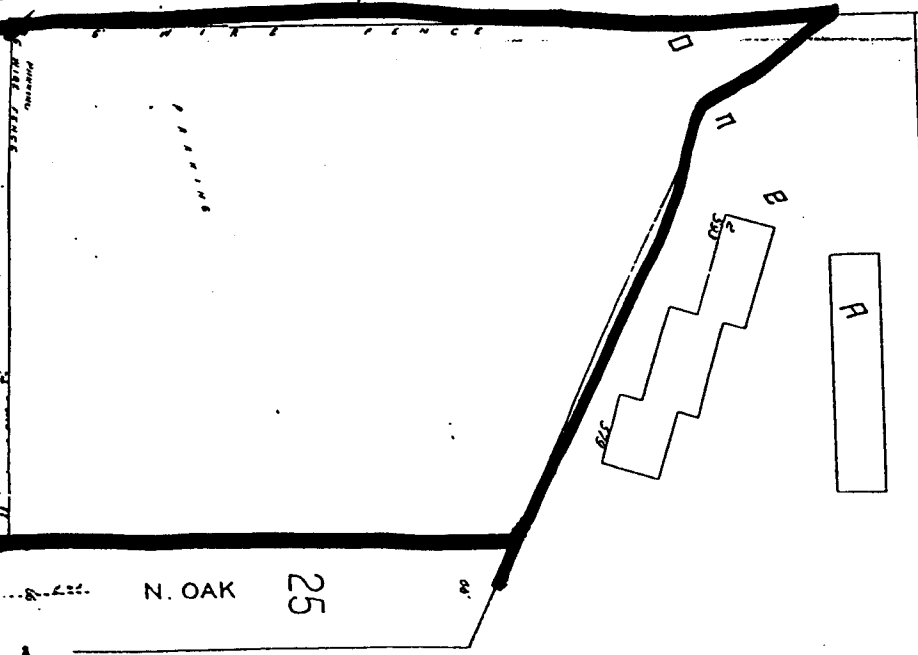
VIRGINIA

ELLICOTT

13



1981

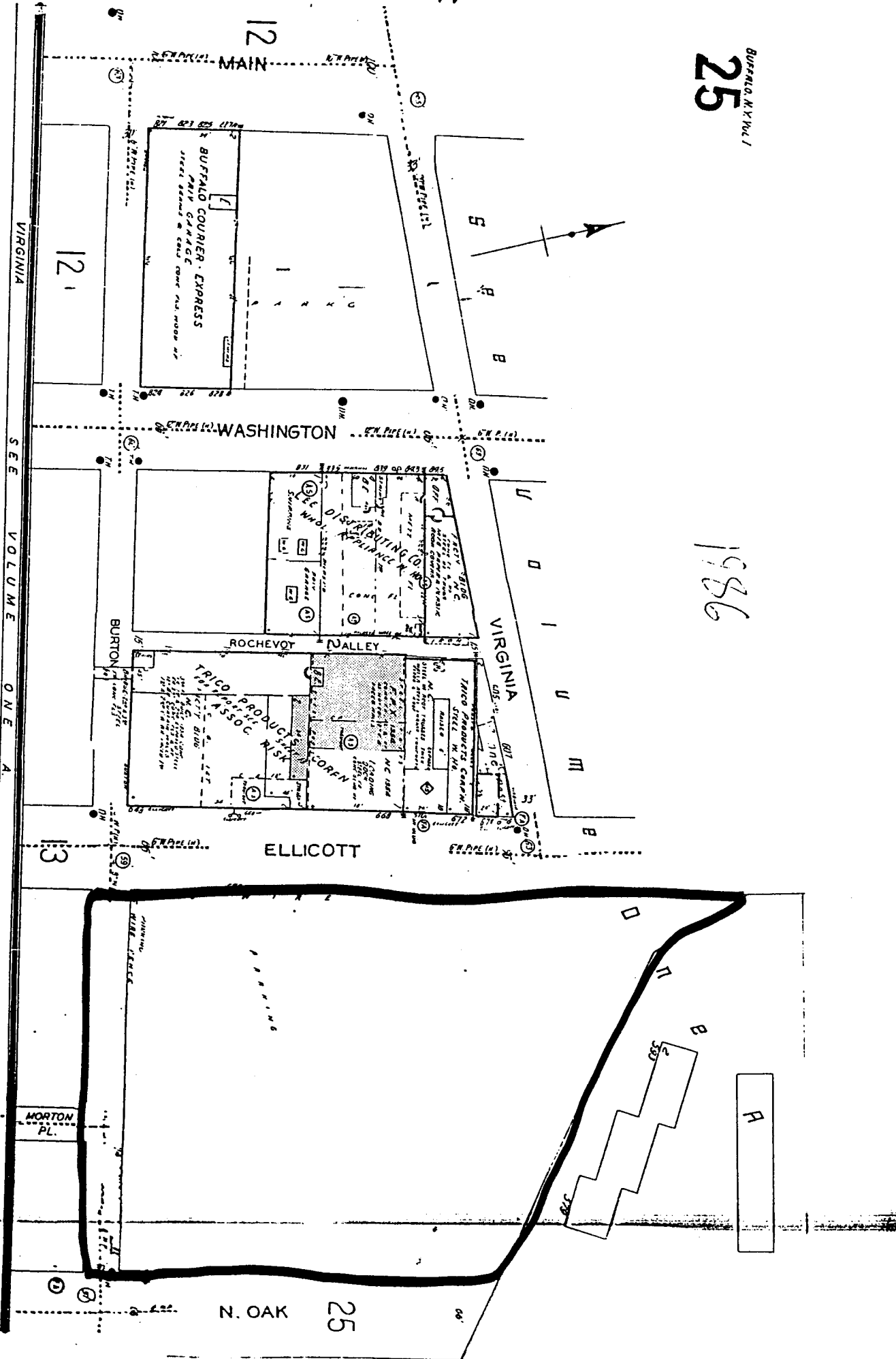


N. OAK

25

MORTON PL.

1986



12

MAIN

121

WASHINGTON

SEE VOLUME ONE A

ROCHEVOT VALLEY

VIRGINIA

ELLICOTT

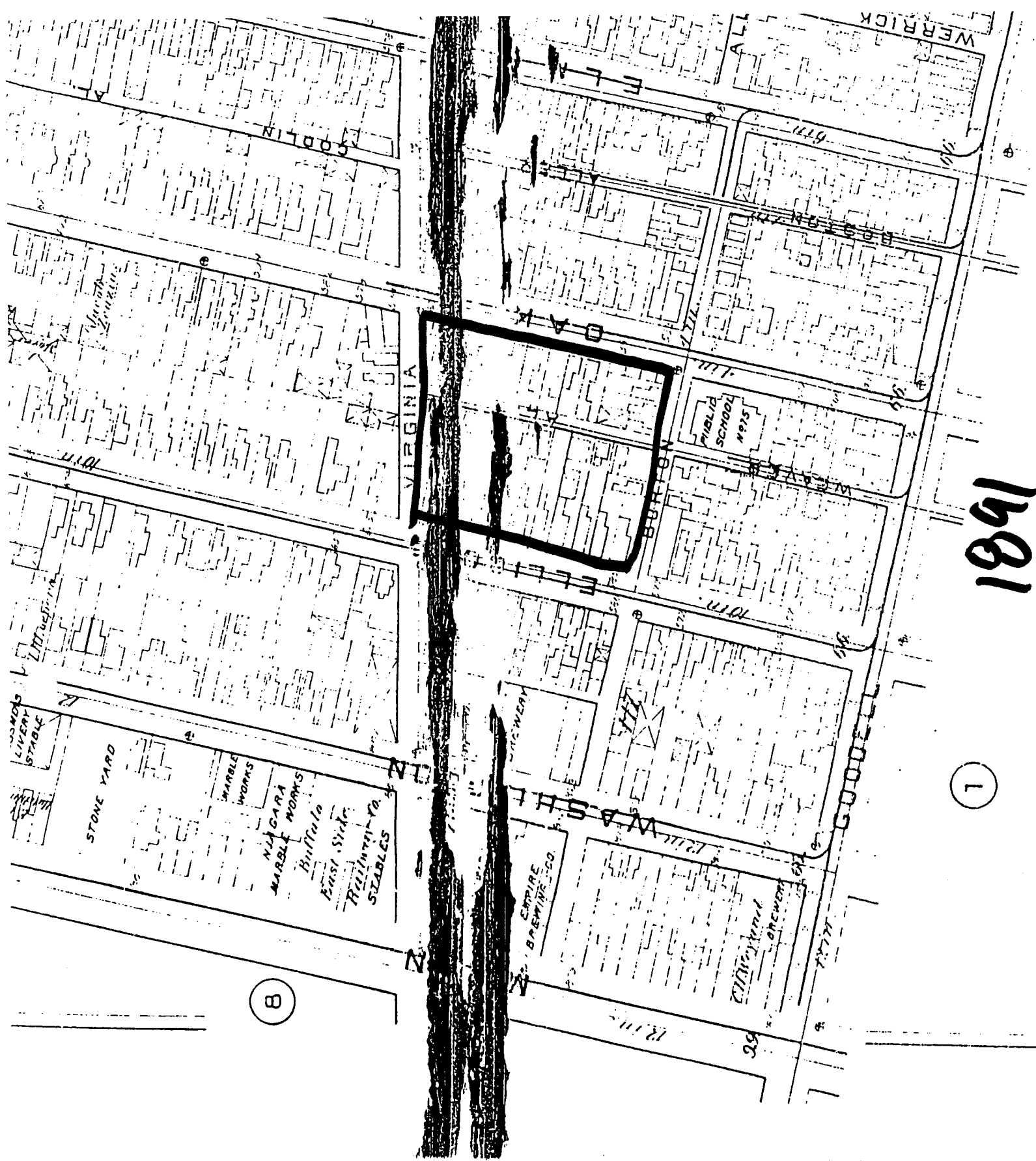
13

N. OAK

25

MORTON PL.

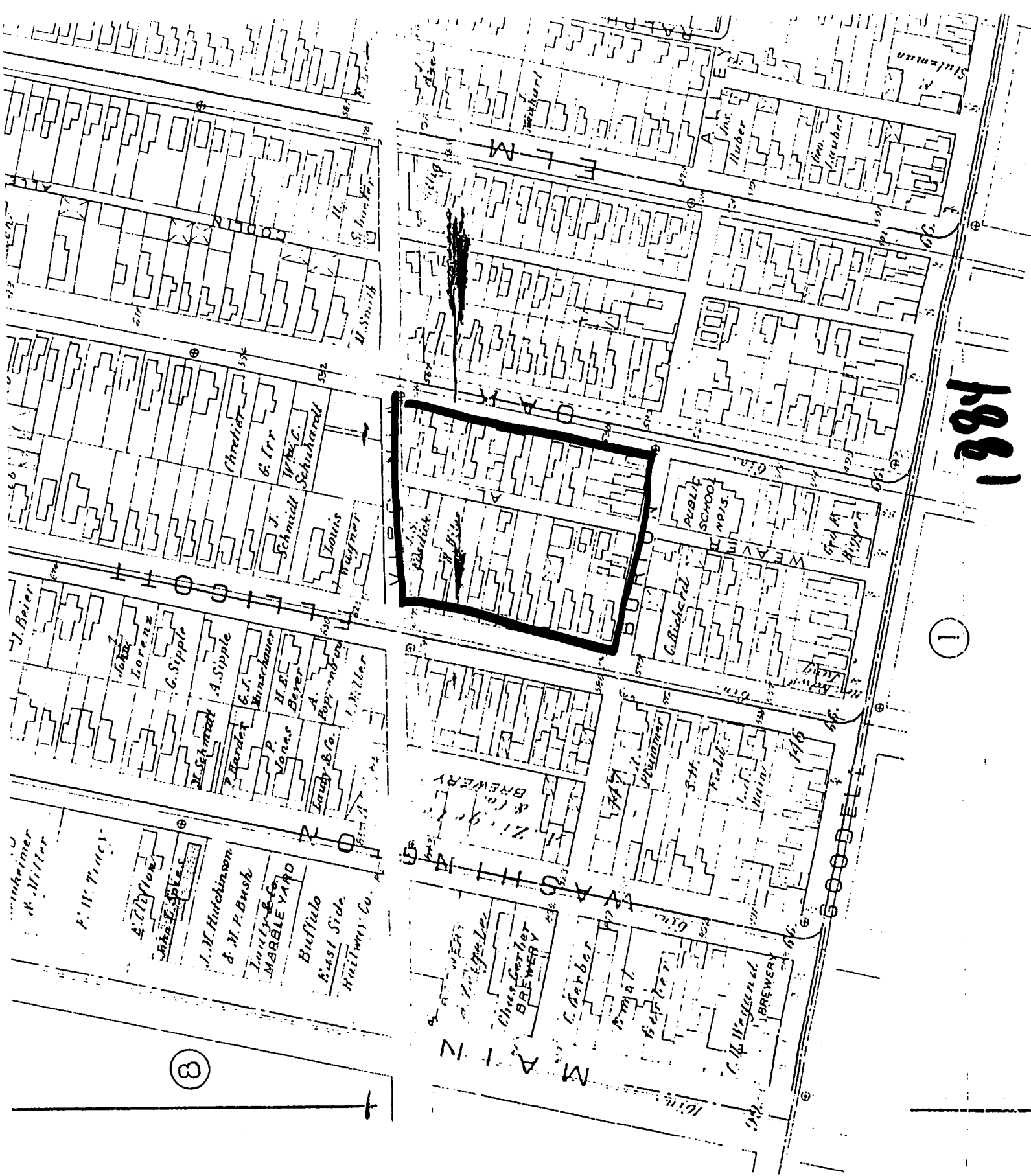
# **BUFFALO CITY PLOT PLANS**



1891

1

8



1881

1

8



1872



## 2.5 Environmental Conditions

The following conditions are considered to be the primary environmental areas of concern by most regulatory agencies, environmental scientists, attorneys and others involved with contaminated land issues.

### 2.5.1 Chemicals (Use and Storage)

The property is currently and for the past twenty plus years, been used as a parking lot. Chemical usage would be limited to leakage from automobiles. The parking lot has been recently paved and appears to be in good condition.

Past usage includes residential until the sometime in the 1950's. A electrical power sub-station was at one time located in the center south portion of the site. Possible PCB usage in these transformers is a potential concern.

### 2.5.2 Polychlorinated Biphenyls (PCB's)

All manufacturing, processing, distribution and use of PCB's (except in a totally enclosed manner) in the United States was banned effective 1979. This rule is part of the Toxic Substances Control Act (TSCA) and was brought about due to the well-documented health hazards of PCB exposure. PCB's have been used since the 1930's as a component of dielectric fluids in transformers. In addition, they were used as an additive to heat transfer systems, hydraulic systems, pigments, electromagnets, compressors, microscope slides, mounting medium and fluorescent light fixtures.

Historical review has revealed that Buffalo General Electric and then Niagara Mohawk Power Corporation had at one time owned and operated a sub-station in the south central portion of the parking lot. This section of the parking area was near the intersection of the former Burton Street and Morton Place. In November of 1994, Conestoga – Rovers & Associates performed a sub-surface investigation including four core borings and a monitoring well in this portion of the parking lot. Soils samples were collected at the 0 – 2 foot and 2 – 4 foot depths. Low levels of PCB's were found in Bore Holes 3 (0-2' at 0.021 ppm) and Bore Hole 4 (0-2' at 0.082 ppm). PCB's were not found above the detection in these bore holes at the 2 – 4 foot depth. Both of these levels are below the cleanup criteria of 10 ppm (parts per million). The groundwater collected in this area, Monitoring Well (MW – 1) revealed no detectable PCB's. The conclusion of the report states that PCB contamination in this area is not a concern and recommended no further action.

Sanborn maps reveal that this sub-station (number 10) was built in 1914.

### 2.5.3 Asbestos

Construction materials containing asbestos have been used extensively in various buildings throughout the United State. Asbestos exposure can cause respiratory disease. If asbestos containing materials remain in good condition and remain undisturbed, exposure is unlikely. If ACM is damaged or disturbed, asbestos fibers are released.

No building currently occupy the site, therefore asbestos containing building materials are not a concern.

### 2.5.4 Other Potentially Hazardous Substances

Other potential concerns were not noted during the visible inspection. There is the potential for the groundwater under the site to be affected by adjacent sites, however the groundwater analyses performed during the sub-surface investigation in 1994 did not reveal elevated levels of contaminants. The only compound above the detection limit was butylbenzlpthalate at 38 parts per billion. This is well below the regulatory action level.

### 2.5.5 Hazardous Wastes and Other Waste Streams

At present wastes are not generated on the site. Past site usage was primarily residential and hazardous waste generation of any significant amount is unlikely.

### 2.5.6 Gases and Air Emissions

Emissions for the site would be the combustion gases from the internal combustion engines (the automobiles). These do not present a concern at this time.

### 2.5.7 Underground and Aboveground Storage Tanks

Historical documented evidence of underground or above ground tanks on the site was not found. Currently there is no visible evidence of underground tanks on the site.

### 2.5.8 Wetlands

The site is completely developed by the parking areas and driveways. No visible wetland conditions or vegetation were noted on the site.

### 3.0 Site History

Numerous residences occupied the site until the 1950's where it was then developed into parking lot for the Trico facility. The one variation is the limited area occupied by the electrical sub-station.

### 3.1 Review of Historical Documents

Information regarding the site was obtained from various sources including City of Buffalo Plot Plans from 1870 – 1890 era, Sanborn Maps from the turn of the century to the present, and the Phase I ESA and subsequent sub-surface investigations performed on behalf of Trico. These investigations were performed in 1994.

### 3.2 Review of Sanborn Maps

Sanborn Maps were reviewed from the following years:

1889 – Residential

1899 – Residential

1925 – Mostly residential, Electrical sub-station present (built in 1914)

1951 – Center vacant, north end residential, Electrical sub-station now owned by Niagara Mohawk.

1981 - Vacant

1986 - Vacant

### 3.3 Interviews with Appropriate Persons

The majority of the current and historical information regarding this site was obtained from review of the previous Phase I reports, discussion with current property owner (Trico) and historical maps (Sanborns).

### 3.4 Adjacent Site History

Light industrial (Trico, Wiele, Eastman Machine), residential and commercial properties make up the mixed usage area of Downtown Buffalo.

#### 4.0 Regulatory Agency Review

The following information is provided to assess your liability as it relates to regulatory compliance and as it relates to contaminated land in the general vicinity of the state.

#### 4.1 EPA National Priorities and CERCLIS Lists

This site does not appear on the National Priority List or the CERCLIS List. The EPA designates a site to one of these lists when a potential or known hazardous pollutant contaminates the site to the extent public health, welfare or the environment is threatened.

The following locations are the nearest known hazardous waste sites. These locations are known, alleged, or potential hazardous waste sites listed in the Comprehensive Environmental Response Compensation and Liability Information System (CERCLIS). It should be noted that the CERCLIS system contains only those potential hazardous waste sites that have been brought to the attention of the Environmental Protection Agency prior to the last update. The E.P.A. does not claim that it contains all the potential hazardous waste sites that exist. Therefore, although a certain property or area is not currently listed in CERCLIS, this is NOT a guarantee that a hazardous waste problem does not exist at or near this site location.

A. National Priorities List:

None listed within 1 mile radius.

B. Federal CERCLIS List: ACTIVE – NONE LISTED (1 MILE RADIUS)

ARCHIVED LIST: Russo Chevrolet – 0.59 miles to south. No further action planned  
Cornell Lead Co. – 0.74 miles south. No further action planned.  
Buffalo Forge Co. Plant 1 – 0.78 mile ESE. No further action planned.

C. Federal Transportation, Storage and Disposal Facilities & Generators: (1 mile radius & 0.25 mile)

1. Trico Products, just south of the SoftBank Building, numerous inspections and a written informal violation regarding Land Ban Requirements.
2. International Branded Apparel, 77 Goodeld St. – 0.062 miles south east. Former RCRA Site.
3. Eastman Machine Co., 779 Washington Street, 0.07 miles WSW. Failure to Notify as generator.

C. Federal Transportation, Storage and Disposal Facilities & Generators: (1 mile radius)

4. Courier Express, 795 Main St. 0.13 miles to west. Former RCRA site.
5. Restoration Works, 9-11 St. Louis Place, 0.15 miles WNW. Former RCRA site.
6. Cellular Products, 872 Main St., 0.16 miles NW. Former RCRA site.
7. Roswell Park Mem. Ins., 666 Elm St., 0.204 miles SE. Former RCRA site.
8. Ellicott Small Animal Hospital, 519 Ellicott St., 0.20 miles SSW. Former RCRA Site.
9. Dept. of Community Development, 9 Carlton St., 0.22 miles NNW . Former RCRA Site.
10. NYSDOT Contract, Rte 33 EB Over Michigan Ave., 0.23 miles ESE. Former RCRA site.
11. Schmidt's Auto Body and Glass, 555 Pearl St., 0.249 miles WSW. Former RCRA site.

D. Federal & State Emergency Response Notification System: (0.25 mile radius)

This site is not a ERNS site. Closest ERNS site is 666 Elm Street, 0.204 miles to SE. Trash compactor ruptured and fumes effected four firefighters.

E. PCB Activity Database (PADS): (1 mile radius)

1. Trico Site, just to south of SoftBank Building. Active PCB generator.

F. Toxic Release Inventory: (0.5 mile radius)

1. Trico Site, just to south of SoftBank Building. Release of toxins to air.
2. PM Refining, 505 Pearl Street – 0.3 miles SW.
3. Carton-Craft Corp. 115 Ash St. – 0.38 miles to SE
4. Trico Site, just to south of SoftBank Building. Release of toxins to air.
5. PM Refining, 505 Pearl Street – 0.3 miles SW.
6. Carton-Craft Corp. 115 Ash St. – 0.38 miles to SE
7. Trico Site, just to south of SoftBank Building. Release of toxins to air.
8. PM Refining, 505 Pearl Street – 0.3 miles SW.
9. Carton-Craft Corp. 115 Ash St. – 0.38 miles to SE

G. Section Seven Tracking System Data (Pesticide Producers): ( 1.0 mile radius)

1. Emulso Copr., 301 Ellicott St. – 0.63 miles SSW
2. Osmose Wood Pres. Co., 980 Ellicott St., 0.66 NNE

H. Civil Enforcement Docket: (1.0 mile radius)

1. Roswell Park Mem. Instit., 0.20 miles to SE – TSCA violations
2. FPPF Chem., 0.38 miles W – FIFRA Act violations
3. Buffalo Airport Central, 0.54 miles NNW – Clean Water Act
4. Buffalo Municipal Incinerator, 0.78 miles SW – Clean Air Act

I. Toxic Substance Control Act (TSCA): (1 mile radius)

1. Spencer Kellogg Textron, 120 Delaware Ave. – 0.68 miles SW.

J. New York Inactive Hazardous Waste Site: (1 mile radius)

1. Osmose Wood Preserving, 980 Ellicott St., 0.64 miles NNE

K. New York Solid Waste Facilities: (1 mile radius)

1. Broadway Garage, 0.77 miles SW. Registered solid waste facility.

L. New York Leaking Underground Tank (and Spills listing): (0.5 mile radius)

Closest one listed is 0.20488 miles to SE – Roswell Park Institute.

Please see Attachmnet Section of report for additional information. These leaking tank locations are far enough removed from the site that it is believed that they have no impact on the SoftBank property.

M. Major Oil Storage Facilities: none listed within the 0.25 mile radius

N. Chemical Bulk Storage Tanks: none listed within the 0.25 mile radius

O. Petroleum Bulk Storage Tank Listing: (0.25 mile radius)

1. Trico Products, immediately south of the SoftBank Building. Two tanks shown on listing, the 30,000 gallon fuel oil tank and the 1,000 gallon gasoline tank. Both tanks were closed out in 1991.
2. NYSDOT, 425 Oak Street, 0.17 miles SSE. One 4,000 gallon diesel and one 2,500 gallon unleaded gasoline.
3. U.S. Postal Service, 701 Washington St., 0.20 miles to SW. One 5,000 gallon unleaded gasoline tanks still active, one 6,000 gallon unleaded gasoline tank closed.
4. Roswell Park Cancer Institute – 24 tanks of various capacities and contents.

#### 4.2 Regulatory Compliance, Inspections, Violations

The New York State Department of Environmental Conservation was contacted in regards to the site. They had records on file for the Trico production area, but not specifically for the office and or the SoftBank Building. We were able to interview NYSDEC representatives from the Environmental Remediation and Spills divisions, Martin Doster and Kathy Brennen, respectively.

A letter requesting file review, under the Freedom of Information Act was sent to the NYSDEC regional office in Buffalo. Based on past experience the review can take upto two months. Files from all DEC divisions are conducted. This report will be updated with the responses as they become available.

#### 4.3 Permits Review

None applicable for this site.

## 5.0 Conclusion/Recommendations

Within the objective, scope and limitations of this assessment the following conclusions are made:

[ X ] We have performed a Phase I Environmental Site Assessment in conformance with the scope and limitations of ASTM Practice E 1527 at the above mentioned property. Any exceptions to or deviations from this practice are described in Section 1.3.3 of this report. This assessment has revealed evidence of recognized environmental conditions in connection with the property, please note the following:

- A. The site is a paved parking lot located in a mixed use section of Buffalo, New York. Little or no environmental concerns are associated with the site currently, however past usage includes a Buffalo Electric Sub-station and a Niagara Mohawk Sub-station. Polychlorinated biphenyl contamination of the soil and or groundwater under this portion of the site was a concern. A sub-surface investigation was performed in 1994 which included four bore holes and one monitoring well were installed in the approximate location of the sub-station. This subsequent soil and water analyses revealed PCB contamination under the regulatory levels. Readings were found to be under one part per million.

### 5.1a) Additional Sampling & Testing

No additional sampling or testing is needed at this time.

### 5.1b) Remedial Action

Not required at this time.



## **6.0 Resume**

**Michael B. McElhinny, CIH**  
*Certified Industrial Hygienist*  
*Air Quality Department Head/Environmental Specialist*

Education: B.S., Earth Science, Gannon University, 1983

Certifications: Certified Industrial Hygienist, 1995  
EPA Accredited AHERA Project Designer  
EPA Accredited AHERA Building Inspector  
EPA Accredited AHERA Management Planner  
State of Ohio Department of Health Certified Asbestos  
Hazard Evaluation Specialist and Designer

Experience: *Microbac Laboratories, Inc*  
Industrial Hygiene Supervisor, December 1987 to present  
Mr. McElhinny performs and/or supervises all divisional  
Industrial Hygiene testing and consultation services, including  
all asbestos, Hazard Communication, Indoor Air Quality, Workplace  
Exposure, Lead Based Paint Testing and related services and  
investigations.

Conducts training for AHERA Designated Persons, Operations  
and Maintenance Workers, and the Custodial Awareness Training.

*Erie County Dept. of Health*  
Environmental Protection Specialist  
Mr. McElhinny had four years experience in water, wastewater and  
permitting. Sewage Enforcement Officer, Community Environment  
Control Inspector, Air Quality Investigator

Continuing Education Courses and Seminars:

Indoor Air Quality Symposium, Georgia Tech University, 1985

Radon Sampling and Analysis, Air Pollution Control Association,  
February 1986

Asbestos Abatement for Inspectors, Tuft's University,  
January 1988

Beyond Hazard Communication - OSHA Expanded Hazard Communication  
and Pennsylvania Right-To-Know, Gannon University, October 1988

Michael McElhinny, CIH

Continuing Education Courses and Seminars:

Asbestos Abatement Project Design, Georgia Tech University,  
January 1989

Radon Testing, Pennsylvania Builder's Association,  
November 1988

Wetland Identification - Pennsylvania State University,  
May 1990

Lead Paint Abatement Worker Training Course, Mapleshade, NJ  
Lead Tech Services, Inc. March 11-12, 1991

Hazardous/Toxic Waste Handling and Disposal, University of  
Pittsburgh, Syska & Hennessy - October 16-17, 1991

Industrial Hygiene Review Course, Triangle Research Park,  
Durham, N.C. January 13-17, 1992

Radiation Training Program, Scitec Corporation, February 28, 1992

Industrial Hygiene Review, Triangle Research Park,  
Durham, NC, January 10-15, 1993

Certified Environmental Investigator, 1992.

Lead Based Paint Inspector, PSI, Pittsburgh, December, 1997

Professional Organizations:

Environmental Information Agency

American Board of Industrial Hygienists, since 1995.

American Industrial Hygiene Association, since 1992.

American Society of Safety Engineer, since 1996.

## **7.0 Photographs**

PARKING AREA TO EAST OF SOFTBANK BUILDING  
ELLCOTT STREET, BUFFALO, NEW YORK



Parking lot – east side looking south towards Weile Building



North end of parking – northeast corner

PARKING AREA TO EAST OF SOFTBANK BUILDING  
ELLCOTT STREET, BUFFALO, NEW YORK



Northwest corner of parking lot

## **8.0 Attachments**

Microbac Laboratories, Inc.  
Erie Testing Laboratory Division 1962 Wager Road, Erie, Pennsylvania 16509 Bundy Industrial Park - I-90 & Route 8  
Phone 814/825-8533 FAX 814/825-9254

PA LAB I.D. 25-067  
NY LAB I.D. 10121  
VA LAB I.D. 00209  
MA LAB I.D. PA087

<sup>®</sup>

March 15, 1999

Charles W. Kollatz  
Regional Citizen Participation Specialist  
New York State Department of Environmental Conservation  
270 Michigan Avenue  
Buffalo, NY 14203-2999

Re: File Review Request - Freedom of Information Request

Dear Mr. Kollatz,

Microbac Laboratories, Inc. is in the process of performing a Phase I ESA's located at:

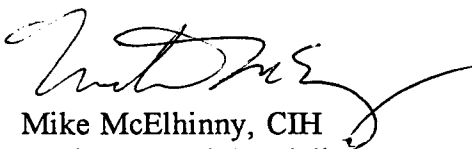
Trico Industries, 817 Washington Street, Buffalo, NY 14203

Trico Industries has been present on the site since the 1940's. They are a manufacturer of windshiled wiper blades.

As required, the Phase I ESA involves contacting regulatory officials to determine compliance or any regulatory activity that has taken place on the property. We are requesting a file search to determine if any file is present on this location.

If there are any questions, please call at 1-800-836-3881. If there are no files for this site, please let us know. Thank you for your assistance.

Sincerely,

  
Mike McElhinny, CIH  
Environmental Specialist



## **EcoSearch Environmental Resources, Inc.**

9365 Counselors Row Suite 104  
Indianapolis, Indiana 46240  
ph: (317) 574-8830 fax: (317) 574-8840

### **EcoSearch Environmental Site Assessment**

<b>Type of Report:</b>	Priority Risk Report
<b>Site Location:</b>	<b>Trico Property 817 Washington Street Buffalo, NY 14203</b>
<b>Date:</b>	April 2, 1999
<b>Report ID Number:</b>	1701-4501
<b>Especially Prepared For:</b>	Mr. Mike McElhinny Microbac Labs, Inc

#### **Limits of Information:**

Customer proceeds at its own risk in choosing to rely on EcoSearch Environmental Resources, Inc. ("EcoSearch") services, in whole or in part, prior to proceeding with any transaction. EcoSearch cannot be an insurer of the accuracy of the information, errors occurring in the conversion of data, or for customer's use of the data. EcoSearch and its affiliated companies, officers, agents, employees, and independent contractors cannot be held liable for accuracy, storage, delivery, loss, or expense suffered by the customer resulting directly or indirectly from any information provided by EcoSearch Environmental Resources, Inc.

Thank you for choosing EcoSearch.

## Introduction

We want to thank you for your order requesting the enclosed site assessment.

EcoSearch makes every effort possible to combine the most accurate environmental data available into an understandable and easy-to-use format.

While every attempt has been made to ensure accuracy of the information presented, we cannot guarantee the accuracy of the data from the original sources, nor can we guarantee that no transcription or plotting errors have occurred.

If any concerns arise from your review of the databases in this report, please call the appropriate agency involved. As a service, we have included phone numbers in the database description section of this report to help you in your evaluation.

The enclosed maps present a working approximation of the location of surrounding environmental sites based primarily on available accurate site addresses. These maps should not be used for purposes more correctly handled by surveys.

EcoSearch is driven by its mission to present the most responsive, technically sound, and cost-effective environmental data services available to our customer.

## Read Me First

The following suggestions are offered in an attempt to help you in using and understanding this site assessment from EcoSearch:

1. Skim over the entire report to familiarize yourself with its contents and layout.
2. You will notice that the information is presented following this general concept: we begin by giving sections that summarize data and then give detailed information about these summaries as you proceed further into the report.
3. Then refer to the section titled "Statistical Overview". You will need to take a moment to read the column headings and the data below them. Also, as you go down the first column (left side) you will probably need to look back at the preceding section titled "Database Descriptions". Please pay particular attention to the radius searched as they vary according to the database. These are ASTM standards that we meet and exceed. Your site's datum is the third, shaded column. Also, the next column showing database hits within the first radius is important as it will include data about adjoining properties. The unmappable sites have their own section with a cover page explaining them.
4. The next section titled "Maps" is important as it gives a very clear visual presentation of the site, and which database(s) are at the site itself or within the study radii.
5. The site summary page(s) tells you by map ID# which database is at that location as well as the site's name and distance/direction from your study site. You will notice that the numbering corresponds to the distance from the subject site-- eg. #1 is your site itself or the site closest to it, #2 is further away. This continues until all database hits have been summarized within the largest study radius. Your report may extend further than one mile if you asked us to extend the radii.
6. As you will recall our format goes from summary-type pages to detailed information. Therefore, the next section is "Detailed Data". Here extensive data is given about each database hit. The map ID#, distance, and direction are in the top left corner. Further data follows.
7. The "Unmappable" section was referred to earlier. In this summary you will find those sites. Please read the cover page as it describes unmappable sites and our efforts to minimize and/or eliminate them from all of our site assessments.
8. The last two divisions -- "Radon" and "Glossary/Acronyms" are self-explanatory and often helpful to our customers.

If you would like further help in understanding our reports please call as our intention is to have this report helpful to you.

# Database Descriptions -- Federal Databases

## NPL

National Priorities List

US Environmental Protection Agency  
Office of Solid Waste and Emergency Response  
(703) 603-8881

Data Date: October 7, 1998  
Release Date: November 18, 1998  
Active Date: December 9, 1998

The NPL is a subset of the CERCLIS and lists over 1,150 of the nation's most dangerous sites of uncontrolled or hazardous waste which require cleanup. Also known as the Superfund List, the sites are scored according to the hazardous ranking system.

## CERCLA (Active)

Comprehensive Environmental Response, Compensation, and Liability Information System (Active)

US Environmental Protection Agency  
Office of Solid Waste and Emergency Response

Data Date: October 7, 1998  
Release Date: November 18, 1998  
Active Date: December 9, 1998

CERCLIS maintains information on over 15,000 sites nationally identified as hazardous or potentially hazardous which may require action. These sites are currently being investigated or an investigation has been completed regarding the release of hazardous substances. The most serious of this list as ranked by the hazardous ranking system are transferred to the NPL.

## CERCLA (NFRAP Archive)

Comprehensive Environmental Response, Compensation, and Liability Information System (NFRAP Archive)

US Environmental Protection Agency  
Office of Solid Waste and Emergency Response

Data Date: October 7, 1998  
Release Date: November 18, 1998  
Active Date: December 9, 1998

For more complete information purposes we include sites which have been reclassified as No Further Remedial Action Planned (NFRAP) by the EPA. This action was taken by the EPA beginning February 1995 as a part of the Brownfields Redevelopment Program. These former CERCLIS sites, also known as the CERCLIS Archive, have been delisted because a lack of significant contamination was found.

## RCRA TSD

Resource Conservation and Recovery Information System -- Treatment, Storage, and Disposal Facilities

US Environmental Protection Agency  
Office of Solid Waste and Emergency Response  
(202) 260-4348

Data Date: July 30, 1998  
Release Date: September 15, 1998  
Active Date: September 28, 1998

RCRIS contains information on hazardous waste handlers regulated by the US Environmental Protection Agency under the Resource Conservation and Recovery Act (RCRA). It is a national system used to track events and activities which fall under RCRA. The TSD database is a subset of the complete RCRIS file which includes facilities which treat, store, dispose, or incinerate hazardous waste. Additionally, compliance and corrective action (CORRACTS) information is included.

## RCRA Generator

Resource Conservation and Recovery Information System -- Large and Small Quantity Generators

US Environmental Protection Agency  
Office of Solid Waste and Emergency Response  
(202) 260-4610

Data Date: July 30, 1998  
Release Date: September 15, 1998  
Active Date: September 28, 1998

RCRIS contains information on hazardous waste handlers regulated by the US Environmental Protection Agency under the Resource Conservation and Recovery Act (RCRA). It is a national system used to track events and activities which fall under RCRA. The generators database is a subset of the complete RCRIS file which includes hazardous waste generators which create more than 100kg of hazardous waste per month or meet other requirements of RCRA. We also include RCRA Notifiers, Transporters, and formerly regulated RCRA Sites for more complete hazardous waste information. Additionally, compliance and corrective action information is included.

## RAATS

RCRA Administrative Action Tracking System

US Environmental Protection Agency  
Office of Enforcement and Compliance Assurance  
(202) 564-4104

Data Date: April 14, 1995  
Release Date: Not Available  
Active Date: April 17, 1995

The RCRA Administrative Action Tracking System contains additional information on RCRA enforcement actions. Data includes the type of action, proposed penalty, and final penalty amount.

## ERNS

Emergency Response Notification System

US Environmental Protection Agency  
Office of Solid Waste and Emergency Response  
(202) 260-2342

Data Date: January 19, 1999  
Release Date: January 19, 1999  
Active Date: March 8, 1999

ERNS is a national database which contains information on specific notification of releases of oil and hazardous substances into the environment. The system stores data regarding the site of the spill, the material released, and the medium into which it occurred. As a joint effort, the Department of Transportation and the Environmental Protection Agency have collaborated to compile more than 290,000 records.

## PADS

PCB Activity Database System

US Environmental Protection Agency  
Office of Pollution Prevention and Toxics  
(202) 260-3992

Data Date: March 26, 1997  
Release Date: Not Available  
Active Date: July 14, 1998

This database stores information about facilities which handle PCBs and file EPA form 7710-53. It is divided into storage facilities, disposers, generators, and transporters.

## TRI

Toxic Release Inventory

US Environmental Protection Agency  
Office of Pollution Prevention and Toxics  
(202) 260-1531

Data Date: October 1995  
Release Date: Not Available  
Active Date: August 10, 1998

TRI contains information from facilities which manufacture, process, or import any of the over 300 listed toxic chemicals which are released directly into air, water, or land or are transported off-site. The database includes facts on amounts of chemicals stored and emitted from the facility. This database is released on an infrequent basis by the US EPA. EcoSearch includes information from 1987 through the 1995 reporting year.

## **SSTS**

### Section Seven Tracking System

US Environmental Protection Agency  
Office of Prevention, Pesticides, and Toxic Substances  
(202) 564-5008

Data Date: July 31, 1998  
Release Date: Not Available  
Active Date: August 27, 1998

Formerly FATES, this system tracks the registration of pesticide-producing establishments and tracks the types and amounts of pesticides, active ingredients, and devices which are sold, produced, or distributed annually.

## **DOCKET**

### Civil Enforcement Docket

US Environmental Protection Agency  
Office of Enforcement  
(202) 564-4114

Data Date: September 3, 1998  
Release Date: Not Available  
Active Date: February 3, 1999

The Civil Enforcement Docket is information on civil and administrative actions filed by the Department of Justice for the US Environmental Protection Agency. This record has been continually updated since 1972 and includes data regarding facility name, dates, laws violated, and penalties assessed.

## **TSCA**

### Toxic Substances Control Act Inventory

US Environmental Protection Agency  
  
(202) 554-1404

Data Date: May 14, 1986  
Release Date: Not Available

The Toxic Substances Control Act Inventory includes the locations and chemical production information of more than 7000 processors and manufacturers of chemicals. This database is no longer released to the public by the US EPA.

## Database Descriptions -- State Databases

### **IHWS (HWS)**

#### New York Inactive Hazardous Waste Disposal Sites Registry

New York Department of Environmental Conservation  
Division of Environmental Remediation  
(518) 457-0747

Data Date: April 1998  
Release Date: July 1998  
Active Date: August 25, 1998

The New York Inactive Hazardous Waste Disposal Sites Registry contains detailed information on facilities deemed potentially hazardous by the Department of Environmental Conservation.

### **SWF**

#### New York Solid Waste Facilities List

New York Department of Environmental Conservation  
Bureau of Resource Recovery  
(518) 457-2051

Data Date: September 9, 1998  
Release Date: September 9, 1998  
Active Date: December 18, 1998

The Solid Waste Facilities List is a listing of permitting solid waste landfills and processing facilities located in the State of New York.

### **LST**

#### New York Leaking Storage Tank Data (Part of the Spills List)

New York Department of Environmental Conservation  
Bureau of Spill Prevention and Response  
(518) 457-7363

Data Date: January 1, 1999  
Release Date: January 1, 1999  
Active Date: February 16, 1999

The New York Leaking Storage Tank Data includes information on reported Leaking Storage tanks in the state of New York which have not yet been remediated or resolved. This information is derived from the larger New York Spills Database.

### **MOSF**

#### New York Major Oil Storage Facilities List

New York Department of Environmental Conservation  
Bureau of Spill Prevention and Response  
(518) 457-7363

Data Date: October 16, 1998  
Release Date: October 16, 1998  
Active Date: January 14, 1999

The New York Major Oil Storage Facilities database contains information on facilities with petroleum storage capacities exceeding four hundred thousand gallons.

### **CBS**

#### New York Chemical Bulk Storage Tanks List

New York Department of Environmental Conservation  
Bureau of Spill Prevention and Response  
518-457-7363

Data Date: January 4, 1999  
Release Date: January 4, 1999  
Active Date: March 10, 1999

The New York Chemical Bulk Storage Tanks List contains information on regulated chemical bulk storage tanks in the state of New York

# **PBS**

## **New York Petroleum Bulk Storage Tank List**

New York Department of Environmental Conservation  
Bureau of Spill Prevention and Response  
(518) 457-4106

Data Date: January 4, 1999  
Release Date: January 4, 1999  
Active Date: March 10, 1999

The New York Petroleum Bulk Storage Tank List contains information on Petroleum tanks in the state of New York. In addition, EcoSearch provides local PBS data in the four counties which have been granted a waiver by the New York DEC to administer the registration process. The following counties are involved: Nassau Health Department (Data Date: 7/16/98, Active Date: 8/4/98), Nassau Fire Marshal (Data Date: 7/31/98, Active Date: 9/28/98), Suffolk, Cortland (Data Date: 7/8/98, Active Date: 7/23/98), and Rockland (Data Date: 7/9/98, Active Date: 7/23/98).



# EcoSearch Statistical Overview

Property Information	
817 Washington Street Buffalo, NY 14203	
Latitude: 42.895296 N	Longitude: 78.869037 W

Search Parameters	
Report:	Priority Risk Report
Radii:	ASTM*
Zip Code(s):	14203 14202 14201 14211 14204
City:	Buffalo
County:	Erie

FEDERAL DATABASES	Radius (miles)	Mappable Sites					Unmappable Sites		
		Total	Site	within 1/4mi	0.25 - 0.50mi	0.50 - 1.00mi	Zip Code	City	County
NPL	1.000	0	0	0	0	0	0	0	0
CERCLA (Active)	1.000	0	0	0	0	0	0	0	0
CERCLA (NFRAP Archive)	1.000	3	0	0	0	3	0	0	0
RCRA TSD	1.000	0	0	0	0	0	0	0	0
RCRA Generator	0.250	12	1	11	-	-	0	0	0
ERNS	0.250	1	0	1	-	-	-	-	-
PADS	1.000	1	1	0	0	0	0	-	-
TRI	0.500	3	1	0	2	-	0	0	0
SSTS	1.000	2	0	0	0	2	0	0	0
DOCKET	1.000	4	0	1	1	2	0	0	0
TSCA	1.000	1	0	0	0	1	0	-	-

STATE DATABASES	Radius (miles)	Mappable Sites					Unmappable Sites		
		Total	Site	within 1/4mi	0.25 - 0.50mi	0.50 - 1.00mi	Zip Code	City	County
IHWS (HWS)	1.000	1	0	0	0	1	0	0	0
SWF	1.000	1	0	0	0	1	0	0	0
LST	0.500	21	0	4	17	-	0	2	0
MOSF	0.250	0	0	0	-	-	0	0	0
CBS	0.250	0	0	0	-	-	0	0	0
PBS	0.250	4	1	3	-	-	0	0	0

**MANUAL GEOCODING:** ^ For this city/township, **863** sites were manually plotted by EcoSearch.

\* This database search and study radii meets or exceeds the ASTM (American Society of Testing and Materials) standards for a government records review.

^ Manual Geocoding: Plotting environmental site data using paper maps and phone calls to properly place the information on the map.

Accurate street addresses are required for records to be found at the study property.

Mappable Sites are environmental sites which were located and appear on the enclosed EcoSearch Map, Site Summary, and Detailed Data sections of the report. These sites are summarized based on proximity to the study site.

Unmappable Sites are governmental records with incomplete or inaccurate address information. These sites could not be located on the street map, but have been searched by the Zip Codes, Cities, and County specified in the search parameters. Further investigation of these sites and their relationship to your study site is necessary.

# EcoSearch Environmental Resources, Inc.

## Priority Risk Report Map

Report ID: 1701-4501  
 Site: 817 Washington Street  
 Buffalo, NY 14203

- ★ Study Site
- ⊙ Study Site Matches Database

### FEDERAL DATABASES Radius (mi)

- NPL Sites 1.00
- CERCLA (Active) Sites 1.00
- CERCLA (NFRAP Archive) Sites 1.00
- ▲ RCRA TSD Sites 1.00
- ▲ RCRA Generator Sites 0.25
- ▼ ERNS Sites 0.25
- PADS Sites 1.00
- ⊕ TRI Sites 0.50
- ★ SSTS Sites 1.00
- DOCKET Sites 1.00
- ▼ TSCA Sites 1.00

### STATE DATABASES

- IHWS (HWS) Sites 1.00
- ◆ SWF Sites 1.00
- ◆ LST Sites 0.50
- ◆ MOSF Sites 0.25
- ◆ CBS Sites 0.25
- ◆ PBS Sites 0.25

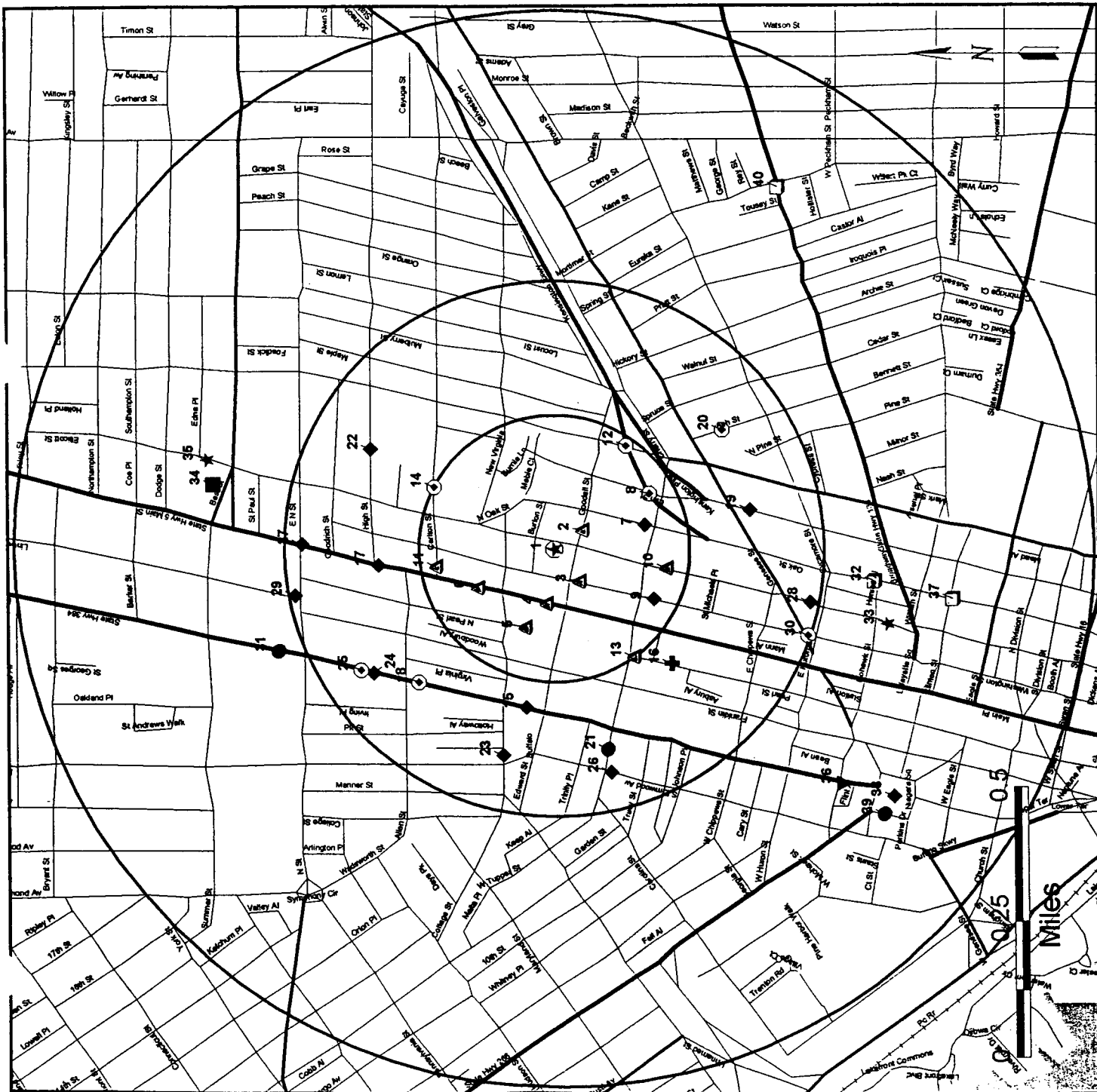
### MULTIPLE MATCHES / AREAS

- ⊙ Two Database Matches
- ⊙ Three or More Matches
- ⊙ Database Area Site

### MAP LEGEND

- Parks
- Incorp. Areas
- Water
- Cemeteries
- Streets
- Secondary Roads
- Primary Roads
- Freeways
- Railroads
- Boundaries

Radii: 1/4 mile, 1/2 mile, 1 mile



Note: The information contained on this map is subject to the general disclaimer on the first page.

# EcoSearch Environmental Resources, Inc.

## Priority Risk Report Map

Report ID: 1701-4501  
 Site: 817 Washington Street  
 Buffalo, NY 14203

★ Study Site  
 ☆ Study Site Matches Database

FEDERAL DATABASES	Radius (mi)
■ NPL Sites	1.00
□ CERCLA (Active) Sites	1.00
□ CERCLA (NFRAP Archive) Sites	1.00
▲ RCRA TSD Sites	1.00
▲ RCRA Generator Sites	0.25
▼ ERNS Sites	0.25
● PADS Sites	1.00
✚ TRI Sites	0.50
★ SSTS Sites	1.00
● DOCKET Sites	1.00
▼ TSCA Sites	1.00

STATE DATABASES	Radius (mi)
■ IHWS (HWS) Sites	1.00
◆ SWF Sites	1.00
◆ LST Sites	0.50
◆ MOSF Sites	0.25
◆ CBS Sites	0.25
◆ PBS Sites	0.25

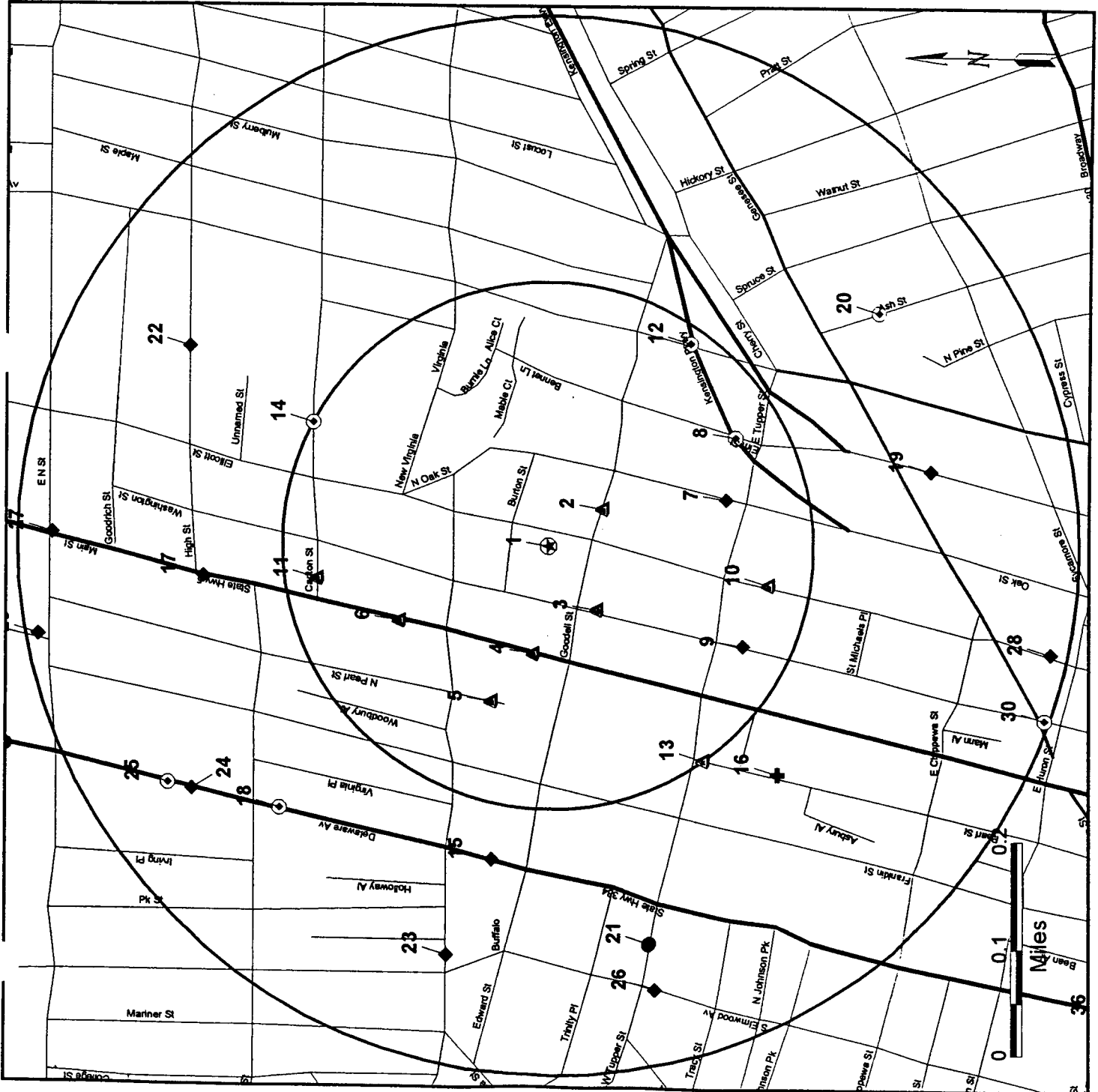
**MULTIPLE MATCHES / AREAS**

- ◆ Two Database Matches
- ◆ Three or More Matches
- ▨ Database Area Site

**MAP LEGEND**

- Parks
- Incorp. Areas
- Water
- Cemeteries
- Streets
- Secondary Roads
- Primary Roads
- Freeways
- Railroads
- Boundaries

**Radius: 1/4 mile, 1/2 mile, 1 mile**



Note: The information contained on this map is subject to the general disclaimer on the first page.

# EcoSearch Environmental Resources, Inc.

## USGS 7.5 Minute Topographical Map

Report ID: 1701-4501  
 Site: 817 Washington Street  
 Buffalo, NY 14203

○ Study Site

### Map Features are Color Coded

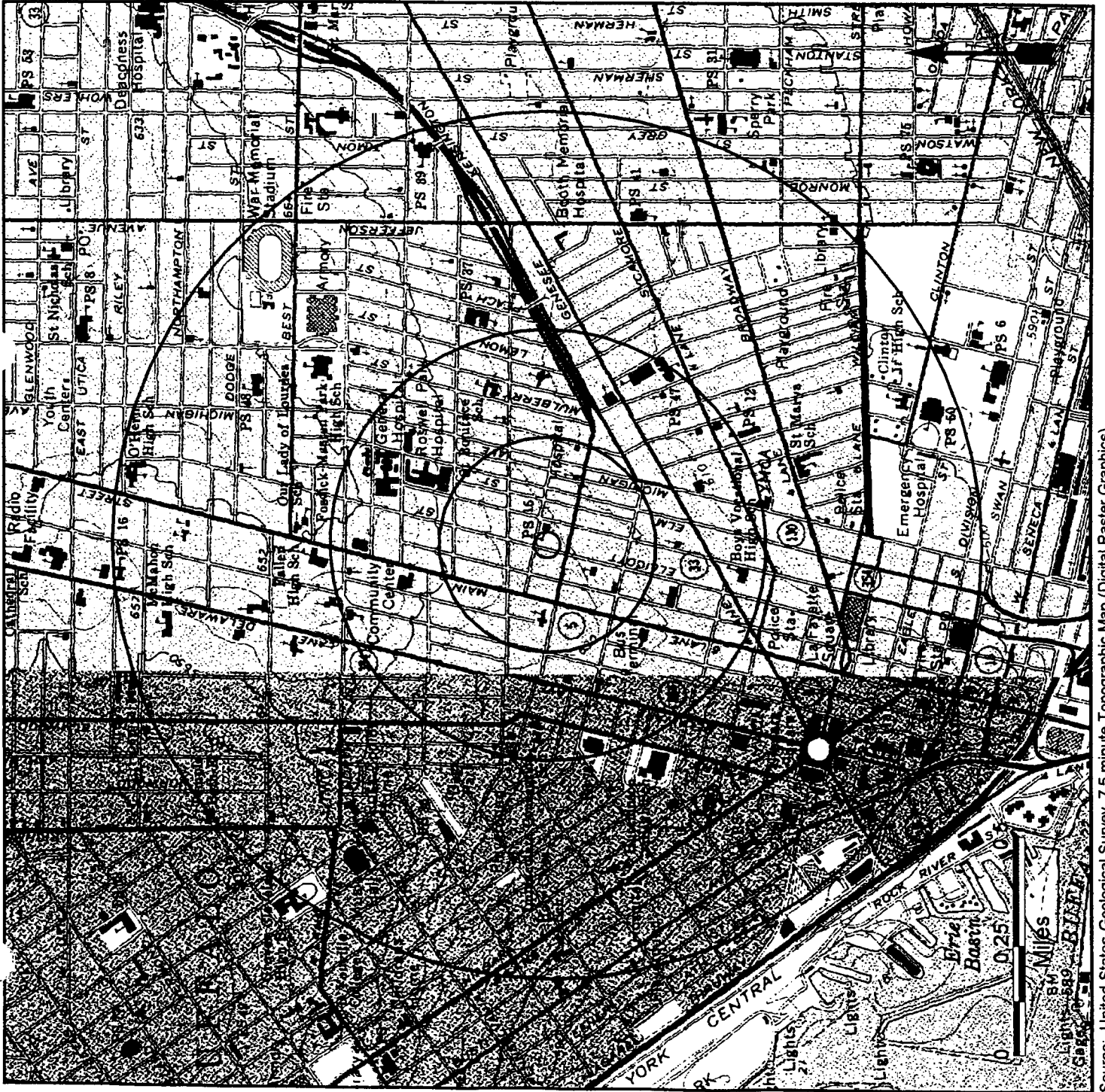
- Black -- Cultural features such as roads and buildings.
- Blue -- Hydrographic features such as lakes and rivers.
- Brown -- Hypsographic (elevation) features shown by contour lines.
- Green -- Woodland cover, scrub, orchards, and vineyards.
- Red -- Important roads and public land survey system.
- Purple -- Features added from aerial photographs during map revision. The changes are not field checked.

A detailed Topographic Map Symbols pamphlet is available from EcoSearch free upon request.

Radii: 0.25 mile, 0.50 mile, 1.00 mile

### Topographical Maps:

- Buffalo NE, NY -- 1965
- Buffalo NW, NY CA10 -- 1965



Source: United States Geological Survey, 7.5 minute Topographic Map (Digital Raster Graphics)

# Site Summary

<u>Map ID#</u>	<u>Database / Agency ID#</u>	<u>Site Name, Address, and County</u>	<u>Distance/Direction</u>
1A	PADS PCB Activity Database Site NYD002107399	TRICO PRODUCTS CORP. 817 WASHINGTON ST BUFFALO, NY 14203-1217 ERIE	0.00000 mi - <b>Manually Geocoded*</b>
1B	TRI Toxic Release Inventory Site 14203TRCPR817WA	TRICO PRODUCTS CORP. PLANT 1 817 WASHINGTON ST BUFFALO, NY 14203-1217 ERIE	0.00000 mi - <b>Manually Geocoded*</b>
1C	PBS New York Petroleum Bulk Storage Tank 9-220450	TRICO PRODUCTS CORPORATION #1 817 WASHINGTON ST BUFFALO, NY 14203-1217 ERIE	0.00000 mi - <b>Manually Geocoded*</b>
1D	RCRA Generator RCRA Notifier Site NYD002107399	TRICO PRODUCTS CORPORATION PLANT 1 817 WASHINGTON ST BUFFALO, NY 14203-1217 ERIE	0.00000 mi - <b>Manually Geocoded*</b>
2	RCRA Generator RCRA Notifier Site NYD982180127	INTERCONTINENTAL BRANDED APPAREL 77 GOODELL ST BUFFALO, NY 14203-1205 ERIE	0.06219 mi SE
3	RCRA Generator RCRA Notifier Site NYD002107555	EASTMAN MACHINE CO 779 WASHINGTON ST BUFFALO, NY 14203-1308 ERIE	0.07498 mi WSW
4	RCRA Generator RCRA Notifier Site NYD980762439	COURIER EXPRESS 795 MAIN ST BUFFALO, NY 14203-1215 ERIE	0.10314 mi W <b>Manually Geocoded*</b>
5	RCRA Generator RCRA Notifier Site NYD986965242	RESTORATION WORKS INC 9-11 SAINT LOUIS PL BUFFALO, NY 14202-1502 ERIE	0.15730 mi WNW
6	RCRA Generator RCRA Notifier Site NYD986995181	CELLULAR PRODUCTS INC 872 MAIN ST BUFFALO, NY 14202-1403 ERIE	0.15841 mi NW
7	PBS New York Petroleum Bulk Storage Tank 9-441317	NYS DOT 425 N OAK ST BUFFALO, NY 14203-1306 ERIE	0.17318 mi SSE
8A	ERNS Emergency Response Notification System 110597	666 ELM ST BUFFALO, NY 14263-0001 ERIE	0.20448 mi SE
8B	RCRA Generator RCRA Notifier Site NYD083534115	ROSWELL PARK MEMORIAL INSTITUTE 666 ELM ST BUFFALO, NY 14263-0001 ERIE	0.20448 mi SE
8C	DOCKET Civil Enforcement Docket 02-88-0545A	ROSWELL PARK MEMORIAL INSTITUT 666 ELM ST BUFFALO, NY 14263-0001 ERIE	0.20448 mi SE
8D	LST New York Leaking Storage Tank 8905775	ROSWELL PARK 666 ELM ST BUFFALO, NY 14263-0001 ERIE	0.20448 mi SE

# Site Summary

<u>Map ID#</u>	<u>Database / Agency ID#</u>	<u>Site Name, Address, and County</u>	<u>Distance/Direction</u>
9	PBS New York Petroleum Bulk Storage Tank 9-026867	U S POSTAL SERVICE ELLICOTT 701 WASHINGTON ST BUFFALO, NY 14203-1412 ERIE	0.20566 mi SW
10	RCRA Generator RCRA Notifier Site NYD053404497	ELLICOTT SMALL ANIMAL HOSPITAL 519 ELLICOTT ST BUFFALO, NY 14203-1518 ERIE	0.20993 mi SSW
11	RCRA Generator RCRA Notifier Site NYD980526750	DEPT OF COMMUNITY DEVELOPMENT 9 CARLTON ST BUFFALO, NY 14203-1107 ERIE	0.22015 mi NNW
12A	RCRA Generator RCRA Notifier Site NY0000098434	NYSDOT CONTRACT 254888 RTE 33 EB OVER MICHIGAN AVE BUFFALO, NY 14203 ERIE	0.23419 mi ESE Manually Geocoded*
12B	RCRA Generator RCRA Notifier Site NY0000098426	NYSDOT CONTRACT D254888 RTE 33 WB OVER MICHIGAN AVE BUFFALO, NY 14203 ERIE	0.23419 mi ESE Manually Geocoded*
13	RCRA Generator RCRA Notifier Site NYD982279259	SCHMIDTS AUTO BODY & GLASS INC 555 PEARL ST BUFFALO, NY 14202-1711 ERIE	0.24921 mi WSW Manually Geocoded*
14A	LST New York Leaking Storage Tank 9301132	ROSWELL CANCER INSTITUTE ELM AND CARLTON ST BUFFALO, NY 14263-0001 ERIE	0.24949 mi NE Manually Geocoded*
14B	LST New York Leaking Storage Tank 9402510	NYSDOH ROSWELL PARK ELM AND CARLTON ST BUFFALO, NY 14263-0001 ERIE	0.24949 mi NE Manually Geocoded*
14C	LST New York Leaking Storage Tank 9206876	NYSDOH ROSWELL LOADING DK ELM AND CARLTON ST BUFFALO, NY 14263-0001 ERIE	0.24949 mi NE Manually Geocoded*
14D	PBS New York Petroleum Bulk Storage Tank 9-125415	ROSWELL PARK CANCER INST-NYSDOH 666 ELM ST (@ CARLTON) BUFFALO, NY 14263-0001 ERIE	0.24949 mi NE Manually Geocoded*
15	LST New York Leaking Storage Tank 8600065	SUTHERLANDS - TEXACO 437 DELAWARE AVE BUFFALO, NY 14202-1514 ERIE	0.30207 mi W
16	TRI Toxic Release Inventory Site 14202PMRFN505PE	PM REFINING INC. 505 PEARL ST BUFFALO, NY 14202-1905 ERIE	0.30446 mi SW Manually Geocoded*
17	LST New York Leaking Storage Tank 8806781	PHYSICANS IMAGING 979 MAIN STREET BUFFALO, NY ERIE	0.32660 mi N Manually Geocoded*
18A	LST New York Leaking Storage Tank 8902410	BRADLEY SUNOCO 553 DELAWARE AVE BUFFALO, NY 14202-1303 ERIE	0.35559 mi NW

# Site Summary

<u>Map ID#</u>	<u>Database / Agency ID#</u>	<u>Site Name, Address, and County</u>	<u>Distance/Direction</u>
18B	LST New York Leaking Storage Tank 9306552	BRADLEY SUNOCO 553 DELAWARE AVE BUFFALO, NY 14202-1303 ERIE	0.35559 mi NW
19	LST New York Leaking Storage Tank 9207974	KAYSER BEAUTY SUPPLIES 327 ELM ST BUFFALO, NY 14203-1634 ERIE	0.36818 mi SSE
20A	TRI Toxic Release Inventory Site 14204CRTNC115AS	CARTON-CRAFT CORP. 115 ASH ST BUFFALO, NY 14204-1452 ERIE	0.38224 mi SE
20B	LST New York Leaking Storage Tank 9604418	CARTON CRAFT 115 ASH ST BUFFALO, NY 14204-1452 ERIE	0.38224 mi SE
21	DOCKET Civil Enforcement Docket 02-92-0254A	FPPF CHEMICAL CO INC 117 W TUPPER ST BUFFALO, NY 14201-2142 ERIE	0.38633 mi W
22	LST New York Leaking Storage Tank 8909904	BUFFALO GENERAL HOSPITAL 100 HIGH ST BUFFALO, NY 14203-1126 ERIE	0.38651 mi NE
23	LST New York Leaking Storage Tank 9401935	NOCO ENERGY 400 VIRGINIA ST BUFFALO, NY 14201-2023 ERIE	0.39809 mi W
24	LST New York Leaking Storage Tank 8808966	BENDERSON DEVELOPMENT 584 DELAWARE AVE BUFFALO, NY 14202-1203 ERIE	0.40834 mi NW
25A	LST New York Leaking Storage Tank 9404468	BENDERSON 600 DELAWARE 600 DELAWARE AVE BUFFALO, NY 14202-1002 ERIE	0.42453 mi NW
25B	LST New York Leaking Storage Tank 9503691	BENDERSON DEVELOPMENT 600 DELAWARE AVE BUFFALO, NY 14202-1002 ERIE	0.42453 mi NW
26	LST New York Leaking Storage Tank 9311171	JOSEPH DAVIS INC 325 S ELMWOOD AVE BUFFALO, NY 14201-2343 ERIE	0.42946 mi W
27	LST New York Leaking Storage Tank 8808014	NIRELLI'S GULF STATION 1038 MAIN & NORTH BUFFALO, NY ERIE	0.46799 mi N
28	LST New York Leaking Storage Tank 9405790	HURONELL CORP. 367 ELLICOTT ST BUFFALO, NY 14203-1620 ERIE	0.48387 mi SSW
29	LST New York Leaking Storage Tank 9405633	LIN-NOR APARTMENTS LINWOOD AVENUE BUFFALO, NY ERIE	0.48858 mi NNW

Manually Geocoded\*

# Site Summary

<u>Map ID#</u>	<u>Database / Agency ID#</u>	<u>Site Name, Address, and County</u>	<u>Distance/Direction</u>
30A	LST New York Leaking Storage Tank 9311418	NIAGARA MOHAWK 535 WASHINGTON ST BUFFALO, NY 14203-1415 ERIE	0.49564 mi SSW
30B	LST New York Leaking Storage Tank 9311972	NIAGARA MOHAWK 535 WASHINGTON ST BUFFALO, NY 14203-1415 ERIE	0.49564 mi SSW
31	DOCKET Civil Enforcement Docket 02-92-0116A	BUFFALO AIRPORT CENTRAL ASSOCI 690 DELAWARE AVE BUFFALO, NY 14209-2202 ERIE	0.54615 mi NNW
32	CERCLA CERCLA Site (Delisted NFRAP Site) NYD982182529	RUSSO CHEVROLET 198 OAK ST BUFFALO, NY 14203-1610 ERIE	0.59488 mi S
33	SSTS Section Seven Tracking System 000019NY 001	EMULSO CORPORATION 301 ELLICOTT ST BUFFALO, NY 14203-1616	0.63106 mi SSW
34	IHWS (HWS) New York Inactive Hazardous Waste Disposal Site 915143	OSMOSE WOOD PRESERVING 980 ELLICOTT ST BUFFALO, NY 14209-2323 ERIE	0.64335 mi NNE  Agency Provided Lat/Long**
35	SSTS Section Seven Tracking System 003008NY 001	OSMOSE WOOD PRESERVING CO OF AMERICA INC 980 ELLICOTT ST BUFFALO, NY 14209-2323	0.66520 mi NNE
36	TSCA Toxic Substances Control Act Inventory Site 004585G	SPENCER KELLOGG TEXTRON INC. 120 DELAWARE AVE BUFFALO, NY 14202-2704 ERIE	0.68955 mi SW
37	CERCLA CERCLA Site (Delisted NFRAP Site) NYD980531594	CORNELL LEAD CO COR CLINTON & OAK STS BUFFALO, NY 14203 ERIE	0.74169 mi S  Manually Geocoded*
38	SWF New York Solid Waste Facility 15R25	BROADWAY GARAGE T.S. ROOM 218 CITY HALL BUFFALO, NY 14202 ERIE	0.77691 mi SW  Manually Geocoded*
39	DOCKET Civil Enforcement Docket 02-76-0009C	BUFFALO MUNICIPAL INCINERAT CITY HALL # ROOM502 BUFFALO, NY 14218-1533 ERIE	0.78258 mi SW  Manually Geocoded*
40	CERCLA CERCLA Site (Delisted NFRAP Site) NYD002114759	BUFFALO FORGE CO PLANT #1 490 BROADWAY ST BUFFALO, NY 14204-1633 ERIE	0.78991 mi ESE

\* -- Manually Geocoded: Site plotted or corrected using paper maps, phone calls, and other resources to properly place the site on the map.

\*\* -- Agency Provided Lat/Long: Site plotted using the latitude and longitude given by the federal or state government agency.

\*\*\* -- Area Manually Plotted: Area manually drawn using digital and paper maps.



## Site Summary

<u>Map ID#</u>	<u>Database / Agency ID#</u>	<u>Site Name, Address, and County</u>	<u>Distance/Direction</u>
1A	PADS PCB Activity Database Site NYD002107399	TRICO PRODUCTS CORP. 817 WASHINGTON ST BUFFALO, NY 14203-1217 ERIE	0.00000 mi - <b>Manually Geocoded*</b>
1B	TRI Toxic Release Inventory Site 14203TRCPR817WA	TRICO PRODUCTS CORP. PLANT 1 817 WASHINGTON ST BUFFALO, NY 14203-1217 ERIE	0.00000 mi - <b>Manually Geocoded*</b>
1C	PBS New York Petroleum Bulk Storage Tank 9-220450	TRICO PRODUCTS CORPORATION #1 817 WASHINGTON ST BUFFALO, NY 14203-1217 ERIE	0.00000 mi - <b>Manually Geocoded*</b>
1D	RCRA Generator RCRA Notifier Site NYD002107399	TRICO PRODUCTS CORPORATION PLANT 1 817 WASHINGTON ST BUFFALO, NY 14203-1217 ERIE	0.00000 mi - <b>Manually Geocoded*</b>
2	RCRA Generator RCRA Notifier Site NYD982180127	INTERCONTINENTAL BRANDED APPAREL 77 GOODELL ST BUFFALO, NY 14203-1205 ERIE	0.06219 mi SE
3	RCRA Generator RCRA Notifier Site NYD002107555	EASTMAN MACHINE CO 779 WASHINGTON ST BUFFALO, NY 14203-1308 ERIE	0.07498 mi WSW
4	RCRA Generator RCRA Notifier Site NYD980762439	COURIER EXPRESS 795 MAIN ST BUFFALO, NY 14203-1215 ERIE	0.10314 mi W <b>Manually Geocoded*</b>
5	RCRA Generator RCRA Notifier Site NYD986965242	RESTORATION WORKS INC 9-11 SAINT LOUIS PL BUFFALO, NY 14202-1502 ERIE	0.15730 mi WNW
6	RCRA Generator RCRA Notifier Site NYD986995181	CELLULAR PRODUCTS INC 872 MAIN ST BUFFALO, NY 14202-1403 ERIE	0.15841 mi NW
7	PBS New York Petroleum Bulk Storage Tank 9-441317	NYSDOT 425 N OAK ST BUFFALO, NY 14203-1306 ERIE	0.17318 mi SSE
8A	ERNS Emergency Response Notification System 110597	666 ELM ST BUFFALO, NY 14263-0001 ERIE	0.20448 mi SE
8B	RCRA Generator RCRA Notifier Site NYD083534115	ROSWELL PARK MEMORIAL INSTITUTE 666 ELM ST BUFFALO, NY 14263-0001 ERIE	0.20448 mi SE
8C	DOCKET Civil Enforcement Docket 02-88-0545A	ROSWELL PARK MEMORIAL INSTITUT 666 ELM ST BUFFALO, NY 14263-0001 ERIE	0.20448 mi SE
8D	LST New York Leaking Storage Tank 8905775	ROSWELL PARK 666 ELM ST BUFFALO, NY 14263-0001 ERIE	0.20448 mi SE

## Site Summary

<u>Map ID#</u>	<u>Database / Agency ID#</u>	<u>Site Name, Address, and County</u>	<u>Distance/Direction</u>
9	PBS New York Petroleum Bulk Storage Tank 9-026867	U S POSTAL SERVICE ELLICOTT 701 WASHINGTON ST BUFFALO, NY 14203-1412 ERIE	0.20566 mi SW
10	RCRA Generator RCRA Notifier Site NYD053404497	ELLICOTT SMALL ANIMAL HOSPITAL 519 ELLICOTT ST BUFFALO, NY 14203-1518 ERIE	0.20993 mi SSW
11	RCRA Generator RCRA Notifier Site NYD980526750	DEPT OF COMMUNITY DEVELOPMENT 9 CARLTON ST BUFFALO, NY 14203-1107 ERIE	0.22015 mi NNW
12A	RCRA Generator RCRA Notifier Site NY0000098434	NYSDOT CONTRACT 254888 RTE 33 EB OVER MICHIGAN AVE BUFFALO, NY 14203 ERIE	0.23419 mi ESE Manually Geocoded*
12B	RCRA Generator RCRA Notifier Site NY0000098426	NYSDOT CONTRACT D254888 RTE 33 WB OVER MICHIGAN AVE BUFFALO, NY 14203 ERIE	0.23419 mi ESE Manually Geocoded*
13	RCRA Generator RCRA Notifier Site NYD982279259	SCHMIDTS AUTO BODY & GLASS INC 555 PEARL ST BUFFALO, NY 14202-1711 ERIE	0.24921 mi WSW Manually Geocoded*
14A	LST New York Leaking Storage Tank 9301132	ROSWELL CANCER INSTITUTE ELM AND CARLTON ST BUFFALO, NY 14263-0001 ERIE	0.24949 mi NE Manually Geocoded*
14B	LST New York Leaking Storage Tank 9402510	NYSDOH ROSWELL PARK ELM AND CARLTON ST BUFFALO, NY 14263-0001 ERIE	0.24949 mi NE Manually Geocoded*
14C	LST New York Leaking Storage Tank 9206876	NYSDOH ROSWELL LOADING DK ELM AND CARLTON ST BUFFALO, NY 14263-0001 ERIE	0.24949 mi NE Manually Geocoded*
14D	PBS New York Petroleum Bulk Storage Tank 9-125415	ROSWELL PARK CANCER INST-NYSDOH 666 ELM ST (@ CARLTON) BUFFALO, NY 14263-0001 ERIE	0.24949 mi NE Manually Geocoded*
15	LST New York Leaking Storage Tank 8600065	SUTHERLANDS - TEXACO 437 DELAWARE AVE BUFFALO, NY 14202-1514 ERIE	0.30207 mi W
16	TRI Toxic Release Inventory Site 14202PMRFN505PE	PM REFINING INC. 505 PEARL ST BUFFALO, NY 14202-1905 ERIE	0.30446 mi SW Manually Geocoded*
17	LST New York Leaking Storage Tank 8806781	PHYSICANS IMAGING 979 MAIN STREET BUFFALO, NY ERIE	0.32660 mi N Manually Geocoded*
18A	LST New York Leaking Storage Tank 8902410	BRADLEY SUNOCO 553 DELAWARE AVE BUFFALO, NY 14202-1303 ERIE	0.35559 mi NW

## Site Summary

<u>Map ID#</u>	<u>Database / Agency ID#</u>	<u>Site Name, Address, and County</u>	<u>Distance/Direction</u>
18B	LST New York Leaking Storage Tank 9306552	BRADLEY SUNOCO 553 DELAWARE AVE BUFFALO, NY 14202-1303 ERIE	0.35559 mi NW
19	LST New York Leaking Storage Tank 9207974	KAYSER BEUATY SUPPLIES 327 ELM ST BUFFALO, NY 14203-1634 ERIE	0.36818 mi SSE
20A	TRI Toxic Release Inventory Site 14204CRTNC115AS	CARTON-CRAFT CORP. 115 ASH ST BUFFALO, NY 14204-1452 ERIE	0.38224 mi SE
20B	LST New York Leaking Storage Tank 9604418	CARTON CRAFT 115 ASH ST BUFFALO, NY 14204-1452 ERIE	0.38224 mi SE
21	DOCKET Civil Enforcement Docket 02-92-0254A	FPPF CHEMICAL CO INC 117 W TUPPER ST BUFFALO, NY 14201-2142 ERIE	0.38633 mi W
22	LST New York Leaking Storage Tank 8909904	BUFFALO GENERAL HOSPITAL 100 HIGH ST BUFFALO, NY 14203-1126 ERIE	0.38651 mi NE
23	LST New York Leaking Storage Tank 9401935	NOCO ENERGY 400 VIRGINIA ST BUFFALO, NY 14201-2023 ERIE	0.39809 mi W
24	LST New York Leaking Storage Tank 8808966	BENDERSON DEVELOPMENT 584 DELAWARE AVE BUFFALO, NY 14202-1203 ERIE	0.40834 mi NW
25A	LST New York Leaking Storage Tank 9404468	BENDERSON 600 DELAWARE 600 DELAWARE AVE BUFFALO, NY 14202-1002 ERIE	0.42453 mi NW
25B	LST New York Leaking Storage Tank 9503691	BENDERSON DEVELOPMENT 600 DELAWARE AVE BUFFALO, NY 14202-1002 ERIE	0.42453 mi NW
26	LST New York Leaking Storage Tank 9311171	JOSEPH DAVIS INC 325 S ELMWOOD AVE BUFFALO, NY 14201-2343 ERIE	0.42946 mi W
27	LST New York Leaking Storage Tank 8808014	NIRELLI'S GULF STATION 1038 MAIN & NORTH BUFFALO, NY ERIE	0.46799 mi N
28	LST New York Leaking Storage Tank 9405790	HURONELL CORP. 367 ELLICOTT ST BUFFALO, NY 14203-1620 ERIE	0.48387 mi SSW
29	LST New York Leaking Storage Tank 9405633	LIN-NOR APARTMENTS LINWOOD AVENUE BUFFALO, NY ERIE	0.48858 mi NNW

**Manually Geocoded\***

## Site Summary

<u>Map ID#</u>	<u>Database / Agency ID#</u>	<u>Site Name, Address, and County</u>	<u>Distance/Direction</u>
30A	LST New York Leaking Storage Tank 9311418	NIAGARA MOHAWK 535 WASHINGTON ST BUFFALO, NY 14203-1415 ERIE	0.49564 mi SSW
30B	LST New York Leaking Storage Tank 9311972	NIAGARA MOHAWK 535 WASHINGTON ST BUFFALO, NY 14203-1415 ERIE	0.49564 mi SSW
31	DOCKET Civil Enforcement Docket 02-92-0116A	BUFFALO AIRPORT CENTRAL ASSOCI 690 DELAWARE AVE BUFFALO, NY 14209-2202 ERIE	0.54615 mi NNW
32	CERCLA CERCLA Site (Delisted NFRAP Site) NYD982182529	RUSSO CHEVROLET 198 OAK ST BUFFALO, NY 14203-1610 ERIE	0.59488 mi S
33	SSTS Section Seven Tracking System 000019NY 001	EMULSO CORPORATION 301 ELLICOTT ST BUFFALO, NY 14203-1616	0.63106 mi SSW
34	IHWS (HWS) New York Inactive Hazardous Waste Disposal Site 915143	OSMOSE WOOD PRESERVING 980 ELLICOTT ST BUFFALO, NY 14209-2323 ERIE	0.64335 mi NNE  Agency Provided Lat/Long**
35	SSTS Section Seven Tracking System 003008NY 001	OSMOSE WOOD PRESERVING CO OF AMERICA INC 980 ELLICOTT ST BUFFALO, NY 14209-2323	0.66520 mi NNE
36	TSCA Toxic Substances Control Act Inventory Site 004585G	SPENCER KELLOGG TEXTRON INC. 120 DELAWARE AVE BUFFALO, NY 14202-2704 ERIE	0.68955 mi SW
37	CERCLA CERCLA Site (Delisted NFRAP Site) NYD980531594	CORNELL LEAD CO COR CLINTON & OAK STS BUFFALO, NY 14203 ERIE	0.74169 mi S  Manually Geocoded*
38	SWF New York Solid Waste Facility 15R25	BROADWAY GARAGE T.S. ROOM 218 CITY HALL BUFFALO, NY 14202 ERIE	0.77691 mi SW  Manually Geocoded*
39	DOCKET Civil Enforcement Docket 02-76-0009C	BUFFALO MUNICIPAL INCINERAT CITY HALL # ROOM502 BUFFALO, NY 14218-1533 ERIE	0.78258 mi SW  Manually Geocoded*
40	CERCLA CERCLA Site (Delisted NFRAP Site) NYD002114759	BUFFALO FORGE CO PLANT #1 490 BROADWAY ST BUFFALO, NY 14204-1633 ERIE	0.78991 mi ESE

\* -- Manually Geocoded: Site plotted or corrected using paper maps, phone calls, and other resources to properly place the site on the map.

\*\* -- Agency Provided Lat/Long: Site plotted using the latitude and longitude given by the federal or state government agency.

\*\*\* -- Area Manually Plotted: Area manually drawn using digital and paper maps.

## Detailed Data

The following pages contain the detailed data concerning the sites plotted on the map and included in the site summary.

**Please Note:** Pages are not included for databases not found within the search radii.

These pages are arranged as follows:

Delisted CERCLA Data

RCRA TSD and Generators Data

ERNS Data

PADS Data

TRI Data

SSTS Data

DOCKET Data

TSCA Data

New York IHWS Data

New York SWF Data

New York LST Data

New York PBS Data

# CERCLA Archive Data

## Delisted Comprehensive Environmental Response, Compensation, and Liability Act Sites (Archive Sites)

Map ID#:	<b>32</b>	Distance (mi):	<b>0.594883</b>	Facility Name:	<b>RUSSO CHEVROLET</b>
		Direction:	<b>S</b>	Address:	<b>198 OAK STREET</b>
EPA ID#:	<b>NYD982182529</b>			City, State, Zip:	<b>BUFFALO, NY 14203</b>
CERCLIS Site ID#:	<b>0202605</b>			County:	<b>ERIE</b>
Status:	This site has been delisted from CERCLIS No Further Remedial Action Planned				
Federal Facility Indicator:	<b>Not a Federal Facility</b>				
Ownership Indicator:	<b>Private</b>				
Comments:	<b>Not Reported</b>				
NPL Status:	<b>Not on the NPL</b>				
RCRIS Facility Indicator:	<b>Not Reported</b>				
Event				Date Started	Date Completed
<b>DISCOVERY</b>				<b>Not Reported</b>	<b>1996-03-22</b>
<b>PRELIMINARY ASSESSMENT</b>				<b>Not Reported</b>	<b>1996-03-22</b>

Map ID#:	<b>37</b>	Distance (mi):	<b>0.741690</b>	Facility Name:	<b>CORNELL LEAD CO</b>
		Direction:	<b>S</b>	Address:	<b>COR CLINTON &amp; OAK STS</b>
EPA ID#:	<b>NYD980531594</b>			City, State, Zip:	<b>BUFFALO, NY 14203</b>
CERCLIS Site ID#:	<b>0201939</b>			County:	<b>ERIE</b>
Status:	This site has been delisted from CERCLIS No Further Remedial Action Planned				
Federal Facility Indicator:	<b>Not a Federal Facility</b>				
Ownership Indicator:	<b>Other</b>				
Comments:	<b>WHITE LEAD WAS MANUFACTURED ON-SITE. WHITE LEAD IS TOXIC AND PERSISTANT CHEMICAL THAT COULD CONTAMINATE THE SOIL AND GROUNDWATER.</b>				
NPL Status:	<b>Not on the NPL</b>				
RCRIS Facility Indicator:	<b>Not Reported</b>				
Event				Date Started	Date Completed
<b>DISCOVERY</b>				<b>Not Reported</b>	<b>1981-06-01</b>
<b>PRELIMINARY ASSESSMENT</b>				<b>Not Reported</b>	<b>1986-03-24</b>

Map ID#:	<b>40</b>	Distance (mi):	<b>0.789914</b>	Facility Name:	<b>BUFFALO FORGE CO PLANT #1</b>
		Direction:	<b>ESE</b>	Address:	<b>490 BROADWAY</b>
EPA ID#:	<b>NYD002114759</b>			City, State, Zip:	<b>BUFFALO, NY 14204</b>
CERCLIS Site ID#:	<b>0201398</b>			County:	<b>ERIE</b>
Status:	This site has been delisted from CERCLIS No Further Remedial Action Planned				
Federal Facility Indicator:	<b>Not a Federal Facility</b>				
Ownership Indicator:	<b>Other</b>				
Comments:	<b>VARIOUS SOLVENTS ADHESIVES, PAINT AND COATINGS. OVERTURNED DRUMS OF SOLVENTS AND PAINTS COULD CONTAMINATE THE GROUNDWATER COULD BE A FIRE HAZARD.</b>				
NPL Status:	<b>Not on the NPL</b>				
RCRIS Facility Indicator:	<b>Not Reported</b>				
Event				Date Started	Date Completed
<b>DISCOVERY</b>				<b>Not Reported</b>	<b>1981-05-01</b>
<b>PRELIMINARY ASSESSMENT</b>				<b>Not Reported</b>	<b>1986-03-24</b>
<b>SITE INSPECTION</b>				<b>1987-02-19</b>	<b>1987-02-23</b>

# RCRA TSD and Generators Data

## Facility and Compliance Information

Map ID#: **1D** Distance (mi): **0.000000** Name: **TRICO PRODUCTS CORPORATION PLANT 1**  
Direction: **-** Address: **817 WASHINGTON ST**  
EPA ID#: **NYD002107399** City, State, Zip: **BUFFALO NY 14203**  
Status: **RCRA Notifier (Former RCRA Site)**  
SIC Code: **3714**  
Land Type: **Unknown** Contact Name: **ALBERT KEMNITZER**  
Contact Phone: **716-852-5700**

### RCRA Evaluation / Violation / Enforcement Data

#### EVALUATIONS

Eval. #:	<b>19850821001</b>	Agency:	<b>State</b>	Evaluation Date:	<b>08/21/1985</b>
Eval. #:	<b>19851114002</b>	Agency:	<b>State</b>	Evaluation Date:	<b>11/14/1985</b>
Eval. #:	<b>19860312005</b>	Agency:	<b>State</b>	Evaluation Date:	<b>03/12/1986</b>
Eval. #:	<b>19860902004</b>	Agency:	<b>State</b>	Evaluation Date:	<b>09/02/1986</b>
Eval. #:	<b>19951106</b>	Agency:	<b>State</b>	Evaluation Date:	<b>11/06/1995</b>
Eval. #:	<b>19970110</b>	Agency:	<b>State</b>	Evaluation Date:	<b>01/10/1997</b>

#### VIOLATIONS

Viol. #: **NYD002107399S0001** Violation Type: **Generator - Land Ban Requirement** Actual Resolution Date: **02/11/1997**

#### ENFORCEMENTS

Enf. #: **19970127** Agency: **State** Type: **Written Informal** Date: **01/27/1997**

### RAATS (RCRA Administrative Action Tracking System) Data

No RAATS Information Reported for this Site

### RCRA Corrective Action Data (CORRACTS) Instrument and Event Data

No Corrective Action Instrument Information for this Site

Instrument Type: **Other** Responsible Agency: **Joint EPA/State**  
Effective Date: **01/15/1981** Issuance Date: **Revocation Date:** Responsible Program: **RCRA**  
Legal Authority:  
**RCRA 3008(h) or equivalent**

<u>Event Date</u>	<u>Event Description</u>	<u>Agency</u>	<u>Program</u>	<u>Reported Status</u>
<b>9/22/92</b>	<b>RFA Completed</b>	<b>EPA</b>	<b>RCRA</b>	<b>Not Reported</b>
<b>1/12/94</b>	<b>Corrective Action Prioritization</b>	<b>EPA</b>	<b>RCRA</b>	<b>Low Priority</b>
<b>7/19/94</b>	<b>Determination of a need for an RFI</b>	<b>EPA</b>	<b>RCRA</b>	<b>RFI is necessary</b>

Map ID#: **2** Distance (mi): **0.062185** Name: **INTERCONTINENTAL BRANDED APPAREL**  
Direction: **SE** Address: **77 GOODELL ST**  
EPA ID#: **NYD982180127** City, State, Zip: **BUFFALO NY 14240**  
Status: **RCRA Notifier (Former RCRA Site)**  
SIC Code:  
Land Type: **Unknown** Contact Name: **DANIEL TORZEWSKI**  
Contact Phone: **716-852-8280**

### RCRA Evaluation / Violation / Enforcement Data

No Compliance Information Reported

### RAATS (RCRA Administrative Action Tracking System) Data

No RAATS Information Reported for this Site

### RCRA Corrective Action Data (CORRACTS) Instrument and Event Data

No Corrective Action Instrument Information for this Site

# RCRA TSD and Generators Data

## Facility and Compliance Information

Map ID#: 3 Distance (mi): 0.074976 Name: EASTMAN MACHINE CO  
Direction: WSW Address: 779 WASHINGTON ST  
EPA ID#: NYD002107555 City, State, Zip: BUFFALO NY 14075  
Status: RCRA Notifier (Former RCRA Site)  
Land Type: Unknown SIC Code:  
Contact Name: HERBERT MCDUGALL  
Contact Phone: 716-856-2200

### RCRA Evaluation / Violation / Enforcement Data

#### EVALUATIONS

Eval. #: 19890421001 Agency: State Evaluation Date: 04/21/1989  
Eval. #: 19980211 Agency: State Evaluation Date: 02/11/1998

#### VIOLATIONS

Viol. #: NYD002107555S0001 Violation Type: Generator - Any Requirements Actual Resolution Date: 03/29/1990

#### ENFORCEMENTS

Enf. #: 19891110001 Agency: State Type: Written Informal Date: 11/10/1989

### RAATS (RCRA Administrative Action Tracking System) Data

No RAATS Information Reported for this Site

### RCRA Corrective Action Data (CORRACTS) Instrument and Event Data

No Corrective Action Instrument Information for this Site

Map ID#: 4 Distance (mi): 0.103141 Name: COURIER EXPRESS  
Direction: W Address: 795 MAIN ST  
EPA ID#: NYD980762439 City, State, Zip: BUFFALO NY 14203  
Status: RCRA Notifier (Former RCRA Site)  
Land Type: Unknown SIC Code:  
Contact Name: R J MANSFIELD  
Contact Phone: 716-855-1035

### RCRA Evaluation / Violation / Enforcement Data

No Compliance Information Reported

### RAATS (RCRA Administrative Action Tracking System) Data

No RAATS Information Reported for this Site

### RCRA Corrective Action Data (CORRACTS) Instrument and Event Data

No Corrective Action Instrument Information for this Site

Map ID#: 5 Distance (mi): 0.157299 Name: RESTORATION WORKS INC  
Direction: WNW Address: 9-11 ST LOUIS PL  
EPA ID#: NYD986965242 City, State, Zip: BUFFALO NY 14202  
Status: RCRA Notifier (Former RCRA Site)  
Land Type: Private Land SIC Code:  
Contact Name: LINDA PRIEBE  
Contact Phone: 716-856-8000

### RCRA Evaluation / Violation / Enforcement Data

#### EVALUATIONS

Eval. #: 19950620 Agency: State Evaluation Date: 06/20/1995



# RCRA TSD and Generators Data

## Facility and Compliance Information

### RAATS (RCRA Administrative Action Tracking System) Data

No RAATS Information Reported for this Site

### RCRA Corrective Action Data (CORRACTS) Instrument and Event Data

No Corrective Action Instrument Information for this Site

Map ID#: **6** Distance (mi): **0.158405** Name: **CELLULAR PRODUCTS INC**  
Direction: **NW** Address: **872 MAIN ST**  
EPA ID#: **NYD986995181** City, State, Zip: **BUFFALO NY 14202**  
Status: **RCRA Notifier (Former RCRA Site)**  
Land Type: **Municipal Land** SIC Code:  
Contact Name: **DIANE WATERMAN**  
Contact Phone: **716-882-0920**

### RCRA Evaluation / Violation / Enforcement Data

#### EVALUATIONS

Eval. #:	<b>19950606</b>	Agency:	<b>State</b>	Evaluation Date:	<b>06/06/1995</b>
Eval. #:	<b>19970225</b>	Agency:	<b>State</b>	Evaluation Date:	<b>02/25/1997</b>

### RAATS (RCRA Administrative Action Tracking System) Data

No RAATS Information Reported for this Site

### RCRA Corrective Action Data (CORRACTS) Instrument and Event Data

No Corrective Action Instrument Information for this Site

Map ID#: **8B** Distance (mi): **0.204477** Name: **ROSWELL PARK MEMORIAL INSTITUTE**  
Direction: **SE** Address: **666 ELM ST**  
EPA ID#: **NYD083534115** City, State, Zip: **BUFFALO NY 14263**  
Status: **RCRA Notifier (Former RCRA Site)**  
Land Type: **Unknown** SIC Code:  
Contact Name: **MICHAEL MURPHY**  
Contact Phone: **716-845-5998**

### RCRA Evaluation / Violation / Enforcement Data

#### EVALUATIONS

Eval. #:	<b>19860113001</b>	Agency:	<b>State</b>	Evaluation Date:	<b>01/13/1986</b>
Eval. #:	<b>19930430</b>	Agency:	<b>State</b>	Evaluation Date:	<b>04/30/1993</b>
Eval. #:	<b>19970204</b>	Agency:	<b>State</b>	Evaluation Date:	<b>02/04/1997</b>

#### VIOLATIONS

Viol. #:	<b>NYD083534115S0001</b>	Violation Type:	<b>Generator - Any Requirements</b>	Actual Resolution Date:	<b>05/29/1986</b>
Viol. #:	<b>NYD083534115S0002</b>	Violation Type:	<b>Generator - Any Requirements</b>	Actual Resolution Date:	<b>10/19/1993</b>
Viol. #:	<b>NYD083534115S0003</b>	Violation Type:	<b>Generator - Any Requirements</b>	Actual Resolution Date:	<b>07/08/1997</b>
Viol. #:	<b>NYD083534115S0004</b>	Violation Type:	<b>Generator - Any Requirements</b>	Actual Resolution Date:	<b>07/08/1997</b>

#### ENFORCEMENTS

Enf. #:	<b>19860414001</b>	Agency:	<b>State</b>	Type:	<b>Written Informal</b>	Date:	<b>04/14/1986</b>
Enf. #:	<b>19930804</b>	Agency:	<b>State</b>	Type:	<b>Initial 3008(a) Compliance Order</b>	Date:	<b>08/04/1993</b>
Enf. #:	<b>19931019</b>	Agency:	<b>State</b>	Type:	<b>Final 3008(a) Compliance Order</b>	Date:	<b>10/19/1993</b>
Enf. #:	<b>19970224</b>	Agency:	<b>State</b>	Type:	<b>Written Informal</b>	Date:	<b>02/24/1997</b>

### RAATS (RCRA Administrative Action Tracking System) Data

No RAATS Information Reported for this Site

# RCRA TSD and Generators Data

## Facility and Compliance Information

### RCRA Corrective Action Data (CORRACTS) Instrument and Event Data

No Corrective Action Instrument Information for this Site

Map ID#: 10 Distance (mi): 0.209929 Name: ELLICOTT SMALL ANIMAL HOSPITAL  
Direction: SSW Address: 519 ELLICOTT ST  
EPA ID#: NYD053404497 City, State, Zip: BUFFALO NY 14203  
Status: RCRA Notifier (Former RCRA Site)  
SIC Code:  
Land Type: Private Land Contact Name: FRANKLIN YARTZ  
Contact Phone: 716-852-8276

### RCRA Evaluation / Violation / Enforcement Data

No Compliance Information Reported

### RAATS (RCRA Administrative Action Tracking System) Data

No RAATS Information Reported for this Site

### RCRA Corrective Action Data (CORRACTS) Instrument and Event Data

No Corrective Action Instrument Information for this Site

Map ID#: 11 Distance (mi): 0.220148 Name: DEPT OF COMMUNITY DEVELOPMENT  
Direction: NNW Address: 9 CARLTON ST  
EPA ID#: NYD980526750 City, State, Zip: BUFFALO NY 14203  
Status: RCRA Notifier (Former RCRA Site)  
SIC Code: 5171  
Land Type: Unknown Contact Name: THOMAS MILONE  
Contact Phone: 716-855-5010

### RCRA Evaluation / Violation / Enforcement Data

No Compliance Information Reported

### RAATS (RCRA Administrative Action Tracking System) Data

No RAATS Information Reported for this Site

### RCRA Corrective Action Data (CORRACTS) Instrument and Event Data

No Corrective Action Instrument Information for this Site

Map ID#: 12A Distance (mi): 0.234185 Name: NYSDOT CONTRACT 254888  
Direction: ESE Address: RTE 33 EB OVER MICHIGAN AVE  
EPA ID#: NY0000098434 City, State, Zip: BUFFALO NY 14203  
Status: RCRA Notifier (Former RCRA Site)  
SIC Code:  
Land Type: Unknown Contact Name: L R GRAZIANO  
Contact Phone: 716-847-3122

### RCRA Evaluation / Violation / Enforcement Data

# RCRA TSD and Generators Data

## Facility and Compliance Information

No Compliance Information Reported

### RAATS (RCRA Administrative Action Tracking System) Data

No RAATS Information Reported for this Site

### RCRA Corrective Action Data (CORRACTS) Instrument and Event Data

No Corrective Action Instrument Information for this Site

---

Map ID#:	<b>12B</b>	Distance (mi):	<b>0.234185</b>	Name:	<b>NYS DOT CONTRACT D254888</b>				
		Direction:	<b>ESE</b>	Address:	<b>RTE 33 WB OVER MICHIGAN AVE</b>				
EPA ID#:	<b>NY0000098426</b>			City, State, Zip:	<b>BUFFALO</b>	<b>NY</b>	<b>14203</b>		
Status:	<b>RCRA Notifier (Former RCRA Site)</b>								
Land Type:	<b>Unknown</b>			SIC Code:					
				Contact Name:	<b>L R GRAZIANO</b>				
				Contact Phone:	<b>716-847-3122</b>				

### RCRA Evaluation / Violation / Enforcement Data

No Compliance Information Reported

### RAATS (RCRA Administrative Action Tracking System) Data

No RAATS Information Reported for this Site

### RCRA Corrective Action Data (CORRACTS) Instrument and Event Data

No Corrective Action Instrument Information for this Site

---

Map ID#:	<b>13</b>	Distance (mi):	<b>0.249212</b>	Name:	<b>SCHMIDTS AUTO BODY &amp; GLASS INC</b>				
		Direction:	<b>WSW</b>	Address:	<b>555 PEARL ST</b>				
EPA ID#:	<b>NYD982279259</b>			City, State, Zip:	<b>BUFFALO</b>	<b>NY</b>	<b>14202</b>		
Status:	<b>RCRA Notifier (Former RCRA Site)</b>								
Land Type:	<b>Unknown</b>			SIC Code:					
				Contact Name:	<b>PAT WALKER</b>				
				Contact Phone:	<b>716-855-1000</b>				

### RCRA Evaluation / Violation / Enforcement Data

No Compliance Information Reported

### RAATS (RCRA Administrative Action Tracking System) Data

No RAATS Information Reported for this Site

### RCRA Corrective Action Data (CORRACTS) Instrument and Event Data

No Corrective Action Instrument Information for this Site

# ERNS Data

## Emergency Response Notification System Data

Map ID#: **8A**      Distance (mi): **0.204477**  
 Direction: **SE**      Location: **666 ELM ST**  
 ID #: **110597**      City, State, Zip: **BUFFALO, NY 14263**

Time Released: **6/2/89 05:42**      Deaths: **0**      Injuries: **5**      Evacuations: **0**      Property Damage: **0.00**

Medium Affected: **Land**  
 Name of Affected Medium: **ASPHALT PARKING LOT**

Cause of Release: **Not Reported**      Discharger Information (if reported):  
 Additional Cause: **Not Reported**      **J & I TRUCKING**  
    **11372 MAIN STREET**  
 Source: **Not Reported**      **NEWSTEAD**      **NY**  
 Transportation Mode: **Highway Related**

Release Description: **TRASH COMPACTOR RUPTURED CANS OF MATERIAL AND DUMPED ON GROUND. 4-5 CANS RUPTURED**

Action Description: **UNKNOWN 4 FIRE FIGHTERS AND 1 CIVILIAN TREATED FOR FUMES.**

Misc. Information:

<u>Material(s) Spilled:</u>	<u>Quantity</u>	<u>Units</u>	<u>Quan in Water</u>	<u>Units in Water</u>	<u>Pounds</u>
HEXANE		UNK		UNK	

# PADS Data

## PCB Activity Database Data

---

Map ID#:	<b>1A</b>	Distance (mi):	<b>0.000000</b>	Name:	<b>TRICO PRODUCTS CORP.</b>
		Direction:	<b>-</b>	Address:	<b>817 WASHINGTON STREET</b>
EPA ID:	<b>NYD002107399</b>			City, State, Zip:	<b>BUFFALO, NY 14203-</b>
				EPA Region:	<b>2</b>
Facility Ownership:	<b>Not a Federal Facility</b>				
Generator:	<b>Active</b>	Transport Facility:	<b>No</b>		
Storage Facility:	<b>No</b>	Disposal Facility:	<b>No</b>		

---

# New York LST Data

## New York Leaking Storage Tanks Data (Derived from Spills List)

Map ID#:	<b>27</b>	Distance (mi): <b>0.46799</b>	Name:	<b>NIRELLI'S GULF STATION</b>
		Direction: <b>N</b>	Address:	<b>1038 MAIN &amp; NORTH</b>
Spill Number:	<b>8808014</b>		City, State Zip:	<b>BUFFALO, NY</b>
			County:	<b>ERIE</b>
Spill Date:	<b>1/3/89</b>		Spiller Name:	<b>CUMBERLAND FARMS</b>
Spill Time:	<b>12:00</b>		Address:	<b>777 DEDHAM</b>
Reported Date:	<b>1/5/89</b>		City, State Zip:	<b>CANTON, OHIO 02021,</b>
Reported Time:	<b>12:03</b>		Contact:	<b>Not Reported</b>
Cause:	<b>Not Reported</b>		Phone:	<b>Not Reported</b>
Source:	<b>Gasoline Station</b>		Spill Reporter Name:	<b>JIM PAUTLER</b>
Resource:	<b>Groundwater</b>		Agency:	<b>BRYANT &amp; STRATTON SCHOOL</b>
Record Creation Date:	<b>1/10/89</b>		Reported By:	<b>Affected Persons</b>
Record Updated Date:	<b>10/5/89</b>		Phone:	<b>( ) -</b>
Last Inspection Date:	<b>6/8/89</b>		Class of Spill:	<b>Not Reported</b>
Closure Date:	<b>10/2/89</b>		Penalty Recommendation:	<b>No</b>
Cleanup Standards Met?:	<b>Yes</b>			
Date Cleanup Stopped:	<b>10/2/89</b>			
Remarks:	<b>01/05/89: 1/5/89 MNP INSP. GASOLINE FUMES FOUND IN BASEMENT, GULF STATION TO TEST TANKS &amp; EXCAVATE INTERCEPTION TRENCH TO STOP FUMES FROM ENTERING BUILDING.</b>			
If nothing, not reported				
	<b>10/02/89: 10/2/89 MNP REVIEW OF FILE, CLEANUP &amp; DISPOSAL SATISFACTORY, COMPLETE.</b>			

<u>Type of Material Spilled</u>	<u>Material Spilled</u>	<u>Amt Spilled</u>	<u>Amt Recovered</u>
Petroleum	GASOLINE	Not Reported	0 Gallons

Map ID#:	<b>28</b>	Distance (mi): <b>0.48387</b>	Name:	<b>HURONELL CORP.</b>
		Direction: <b>SSW</b>	Address:	<b>367 ELLICOTT ST</b>
Spill Number:	<b>9405790</b>		City, State Zip:	<b>BUFFALO, NY 14203</b>
			County:	<b>ERIE</b>
Spill Date:	<b>7/8/94</b>		Spiller Name:	<b>HURONELL CORP.</b>
Spill Time:	<b>12:00</b>		Address:	<b>367 ELLICOTT STREET</b>
Reported Date:	<b>7/28/94</b>		City, State Zip:	<b>BUFFALO, NY 14203</b>
Reported Time:	<b>12:00</b>		Contact:	<b>Not Reported</b>
Cause:	<b>Not Reported</b>		Phone:	<b>( ) -</b>
Source:	<b>Other Comm/Industrial</b>		Spill Reporter Name:	<b>PATTY LUTZ</b>
Resource:	<b>Groundwater</b>		Agency:	<b>INTERFACE SERVICES</b>
Record Creation Date:	<b>7/29/94</b>		Reported By:	<b>Other</b>
Record Updated Date:	<b>8/12/94</b>		Phone:	<b>(315) 437-3720</b>
Last Inspection Date:	<b>Not Reported</b>		Class of Spill:	<b>D5</b>
Closure Date:	<b>8/8/94</b>		Penalty Recommendation:	<b>No</b>
Cleanup Standards Met?:	<b>No</b>			
Date Cleanup Stopped:	<b>8/8/94</b>			
Remarks:	<b>07/29/94: 7/29/94 MNP REVIEWED CES 7/25/94 SAMPLE REPORT. ONLY BENZENE EXCEEDED SOIL GUIDANCE VALUE AT 38 PPB. NO FURTHER ACTION NEEDED, INACTIVE, NEED TO SEND LETTER TO HURONELL CORP.</b>			
If nothing, not reported				
	<b>08/08/94: 8/8/94 LETTER TO HURONELL, SITE INACTIVE.</b>			

<u>Type of Material Spilled</u>	<u>Material Spilled</u>	<u>Amt Spilled</u>	<u>Amt Recovered</u>
Petroleum	GASOLINE	Not Reported	0

# TRI Data

## Toxic Release Inventory Data

Map ID#:	<b>1B</b>	Distance:	0.000000		
		Direction:	-		
Agency ID:	<b>14203TRCPR817WA</b>	Name:	<b>TRICO PRODUCTS CORP. PLANT 1</b>		
EPA ID#:	<b>NYD002107399</b>	Address:	<b>817 WASHINGTON ST.</b>		
IC Code:	<b>3714</b>	City, State, Zip:	<b>BUFFALO, NY 14203</b>		

Submission Year:	<b>1989</b>	Substance:	<b>1,1,1-TRICHLOROETHANE</b>		
		Maximum Amount On Site (lbs):	<b>1,000 TO 9,999</b>		
<u>Amount Released or Transported Previous Year (lbs):</u>					
Air	Water	Underground	Land	Pub. Owned Treatment	Total
16,000.00	0.00	0.00	0.00	0.00      0.00	16,000.00

Submission Year:	<b>1990</b>	Substance:	<b>1,1,1-TRICHLOROETHANE</b>		
		Maximum Amount On Site (lbs):	<b>10,000 TO 99,999</b>		
<u>Amount Released or Transported Previous Year (lbs):</u>					
Air	Water	Underground	Land	Pub. Owned Treatment	Total
10,600.00	0.00	0.00	0.00	0.00      0.00	10,600.00

Submission Year:	<b>1991</b>	Substance:	<b>1,1,1-TRICHLOROETHANE</b>		
		Maximum Amount On Site (lbs):	<b>0 TO 99</b>		
<u>Amount Released or Transported Previous Year (lbs):</u>					
Air	Water	Underground	Land	Pub. Owned Treatment	Total
6,028.00	0.00	0.00	0.00	0.00      6,123.00	12,151.00

Submission Year:	<b>1992</b>	Substance:	<b>1,1,1-TRICHLOROETHANE</b>		
		Maximum Amount On Site (lbs):	<b>10,000 TO 99,999</b>		
<u>Amount Released or Transported Previous Year (lbs):</u>					
Air	Water	Underground	Land	Pub. Owned Treatment	Total
1,700.00	0.00	0.00	0.00	0.00      24,875.00	26,575.00

Map ID#:	<b>16</b>	Distance:	0.304462		
		Direction:	<b>SW</b>		
Agency ID:	<b>14202PMRFN505PE</b>	Name:	<b>PM REFINING INC.</b>		
EPA ID#:	<b>NYD002104552</b>	Address:	<b>505 PEARL ST.</b>		
IC Code:	<b>3911</b>	City, State, Zip:	<b>BUFFALO, NY 14202</b>		

Submission Year:	<b>1987</b>	Substance:	<b>NITRIC ACID</b>		
		Maximum Amount On Site (lbs):	<b>1,000 TO 9,999</b>		
<u>Amount Released or Transported Previous Year (lbs):</u>					
Air	Water	Underground	Land	Pub. Owned Treatment	Total
500.00	0.00	0.00	0.00	0.00      12,600.00	13,100.00

Submission Year:	<b>1987</b>	Substance:	<b>HYDROCHLORIC ACID (1995 AND AFTER `` ACID AEROSOLS'' ONLY)</b>		
		Maximum Amount On Site (lbs):	<b>1,000 TO 9,999</b>		
<u>Amount Released or Transported Previous Year (lbs):</u>					
Air	Water	Underground	Land	Pub. Owned Treatment	Total
500.00	0.00	0.00	0.00	0.00      25,500.00	26,000.00

Submission Year:	<b>1987</b>	Substance:	<b>AMMONIA</b>		
		Maximum Amount On Site (lbs):	<b>1,000 TO 9,999</b>		
<u>Amount Released or Transported Previous Year (lbs):</u>					
Air	Water	Underground	Land	Pub. Owned Treatment	Total
0.00	0.00	0.00	0.00	0.00      0.00	0.00

Submission Year:	<b>1988</b>	Substance:	<b>HYDROCHLORIC ACID (1995 AND AFTER `` ACID AEROSOLS'' ONLY)</b>		
		Maximum Amount On Site (lbs):	<b>1,000 TO 9,999</b>		
<u>Amount Released or Transported Previous Year (lbs):</u>					
Air	Water	Underground	Land	Pub. Owned Treatment	Total
500.00	0.00	0.00	0.00	0.00      22,000.00	22,500.00

Map ID#:	<b>20A</b>	Distance:	0.382244		
		Direction:	<b>SE</b>		
Agency ID:	<b>14204CRTNC115AS</b>	Name:	<b>CARTON-CRAFT CORP.</b>		
EPA ID#:	<b>NYD049834518</b>	Address:	<b>115 ASH ST.</b>		
IC Code:	<b>2732</b>	City, State, Zip:	<b>ERIE, NY 14204</b>		

Submission Year:	<b>1991</b>	Substance:	<b>ACETONE</b>		
		Maximum Amount On Site (lbs):	<b>1,000 TO 9,999</b>		
<u>Amount Released or Transported Previous Year (lbs):</u>					
Air	Water	Underground	Land	Pub. Owned Treatment	Total
19,341.00	0.00	0.00	0.00	0.00      0.00	19,341.00

# TRI Data

## Toxic Release Inventory Data

Submission Year: 1992		Substance: ACETONE				
Maximum Amount On Site (lbs): 1,000 TO 9,999		Amount Released or Transported Previous Year (lbs):				
Air	Water	Underground	Land	Pub. Owned Treatment	Offsite Transfer	Total
21,369.00	0.00	0.00	0.00	0.00	0.00	21,369.00

Submission Year: 1993		Substance: ACETONE				
Maximum Amount On Site (lbs): 1,000 TO 9,999		Amount Released or Transported Previous Year (lbs):				
Air	Water	Underground	Land	Pub. Owned Treatment	Offsite Transfer	Total
24,495.00	0.00	0.00	0.00	0.00	0.00	24,495.00