



# EEEEPC Project Waste and Manifest Tracking Logs

# Shenango Steel Mold Site - NYSDEC Site # 9-15-172

## Waste Material Shipping Record and Log

Site Location: LNAPL Area

Load # for Day	Date In:	Project Load No.	Truck No.	Transporter Name:	Profile	Driver Name	Time In	Tare Weight In (lbs.)	Gross Weight Out (lbs)	Site Exit Weight (Tons)	Site Note	Landfill Weight (Tons)	Difference (Tons)
1	2/14/2006	LN001	104	Pariso	1	Steve Cambell	11:30 AM	12080	22600	22.37		22.62	(0.25)
								14800	49020				
								26880	71620				
2	2/14/2006	LN002	101	Pariso	1	Bill Reinhardt	11:46 AM	12160	24980	25.56		25.74	(0.18)
								14480	52780				
								26640	77760				
3	2/14/2006	LN003	102	Pariso	1	Mike Wilson	12:10 PM	11280	21860	22.35		21.92	0.43
								14380	48500				
								25660	70360				
4	2/14/2006	LN004	217	Pariso	1	Dennis Wolf	1:05 PM	11820	20560	22.65		22.76	0.11
								14080	50640				
								25900	71200				
5	2/14/2006	LN005	172	Pariso	1	Bob Wark	1:05 PM	11480	17600	20.65		22.52	1.87
								13760	48940				
								25240	66540				
6	2/14/2006	LN006	104	Pariso	1	Steve Cambell	1:30 PM	11740	22480	26.65		25.94	(0.71)
								12780	55340				
								24520	77820				
7	2/14/2006	LN007	101	Pariso	1	Bill Reinhardt	1:30 PM	11880	22820	26.86		27.14	0.28
								14380	57160				
								26260	79980				
8	2/14/2006	LN008	102	Pariso	1	Mike Wilson	1:46 PM	11900	23620	25.65		25.84	0.19
								14280	53860				
								26180	77480				
9	2/14/2006	LN009	217	Pariso	1	Dennis Wolf	2:34 PM	11820	20980	23.96		24.20	0.24
								14140	52900				
								25960	73880				

**Shenango Steel Mold Site - NYSDEC Site # 9-15-172**  
**Waste Material Shipping Record and Log**  
**Site Location: LNAPL Area**

10	2/14/2006	LN010	172	Pariso	1	Bob Wark	2:42 PM	9820	15900	21.04	weight wrong, tag axle too low, replacing this truck	28.44	7.40
								13860	49860				
								23680	65760				
11	2/14/2006	LN011	104	Pariso	1	Steve Cambell	3:00 PM	11500	22400	25.14		25.44	0.30
								14780	54160				
								26280	76560				
12	2/14/2006	LN012	102	Pariso	1	Mike Wilson	3:02 PM	11960	21720	22.94		23.24	0.30
								14360	50480				
								26320	72200				
13	2/14/2006	LN013	101	Pariso	1	Bill Reinhardt	3:05 PM	11900	23420	24.02		24.32	0.30
								14300	50820				
								26200	74240				
1	2/15/2006	LN14	104	Pariso	1	Jimmy Penque	6:52 AM	11640	21240	23.34		23.58	0.24
								14840	51920				
								26480	73160				
2	2/15/2006	LN15	101	Pariso	1	Bill Reinhardt	6:54 AM	12020	24240	26.92		27.16	0.24
								14420	56040				
								26440	80280				
3	2/15/2006	LN16	100	Pariso	1	Steve Cambell	7:01 AM	10520	18300	24.35		24.56	0.21
								12980	53900				
								23500	72200				
4	2/15/2006	LN17	102	Pariso	1	Mike Wilson	7:18 AM	11800	21920	24.12		24.30	0.18
								14380	52500				
								26180	74420				
5	2/15/2006	LN18	101	Pariso	1	Bill Reinhardt	10:57 AM	11860	21640	19.43		19.68	0.25
								14260	43340				
								26120	64980				
6	2/15/2006	LN19	104	Pariso	1	Jimmy Penque	10:58 AM	11640	21680	22.32		22.42	0.10
								14680	49280				
								26320	70960				

**Shenango Steel Mold Site - NYSDEC Site # 9-15-172**  
**Waste Material Shipping Record and Log**  
**Site Location: LNAPL Area**

7	2/15/2006	LN20	100	Pariso	1	Steve Cambell	11:00 AM	10460	16740	21.18		21.40	0.22
								12880	48960				
								23340	65700				
8	2/15/2006	LN21	102	Pariso	1	Mike Wilson	11:06 AM	11820	23660	23.67		23.72	0.05
								14320	49820				
								26140	73480				
9	2/15/2006	LN22	101	Pariso	1	Bill Reinhardt	12:18 PM	11880	22240	23.72		23.88	0.16
								14300	51380				
								26180	73620				
10	2/15/2006	LN23	104	Pariso	1	Jimmy Penque	12:21 PM	11700	22580	22.73		23.08	0.35
								14820	49400				
								26520	71980				
11	2/15/2006	LN24	100	Pariso	1	Steve Cambell	12:52 PM	10400	16060	17.42	confusion on weights due to 3 trucks having to go back in	22.18	4.76
								12800	41980				
								23200	58040				
12	2/15/2006	LN25	102	Pariso	1	Mike Wilson	12:54 PM	11900	21000	21.37		21.49	0.12
								14360	48000				
								26260	69000				
13	2/15/2006	LN26	222	Pariso	1	John Schuck	12:55 PM	11120	16940	19.47		19.11	(0.36)
								12980	46100				
								24100	63040				
14	2/15/2006	LN27	101	Pariso	1	Bill Reinhardt	1:43 PM	11880	23220	22.11		22.32	0.21
								14380	47260				
								26260	70480				
15	2/15/2006	LN028	104	Pariso	1	Jimmy Penque	2:02 PM	11840	21260	21.40	weight possibly wrong, tare tickets mixed up	21.60	0.20
								14840	48220				
								26680	69480				
16	2/15/2006	LN029	102	Pariso	1	Mike Wilson	2:10 PM	11660	21700	21.51	weight possibly wrong, tare tickets mixed up	21.43	(0.08)
								14440	47420				
								26100	69120				



**Shenango Steel Mold Site - NYSDEC Site # 9-15-172**  
**Waste Material Shipping Record and Log**  
**Site Location: LNAPL Area**

17	2/15/2006	LN030	222	Pariso	1	John Schuck	2:46PM	11220	18280	21.57		21.68	0.11
								13040	49120				
								24260	67400				
18	2/15/2006	LN031	101	Pariso	1	Bill Reinhardt	3:12PM	11820	21220	22.03		22.20	0.17
								14360	49020				
								26180	70240				
1	2/16/2006	LN032	104	Pariso	1	Jimmy Penque	6:54 AM	12280	22520	21.43		21.90	0.47
								15140	47760				
								27420	70280				
2	2/16/2006	LN033	101	Pariso	1	Bill Reinhardt	6:55 AM	12320	24020	24.07		24.58	0.51
								14660	51100				
								26980	75120				
3	2/16/2006	LN034	102	Pariso	1	Steve Cambell	7:02 AM	12180	23660	19.48		20.00	0.52
								14720	42200				
								26900	65860				
4	2/16/2006	LN035	181	Pariso	1	Brian O'Rourke	7:10 AM	11900	21180	20.25		20.90	0.65
								14360	45580				
								26260	66760				
5	2/16/2006	LN036	210	Pariso	1	Gary Holler	7:24 AM	11840	22280	23.53		23.74	0.21
								14560	51180				
								26400	73460				
6	2/16/2006	LN037	104	Pariso	1	Jimmy Penque	8:33 AM	11940	23120	25.55		25.88	0.33
								14960	54880				
								26900	78000				
7	2/16/2006	LN038	101	Pariso	1	Bill Reinhardt	8:36 AM	12060	24240	22.86		23.14	0.28
								14500	48040				
								26560	72280				
8	2/16/2006	LN039	102	Pariso	1	Steve Cambell	9:03AM	11880	22880	20.80		21.12	0.32
								14500	45100				
								26380	67980				

**Shenango Steel Mold Site - NYSDEC Site # 9-15-172**  
**Waste Material Shipping Record and Log**  
**Site Location: LNAPL Area**

9	2/16/2006	LN040	181	Pariso	1	Brian O'Rourke	9:10AM	11340	22560	23.18		23.24	0.06
								14000	49140				
								25340	71700				
10	2/16/2006	LN041	210	Pariso	1	Gary Holler	9:24AM	11780	25000	26.01		26.66	0.65
								14600	53400				
								26380	78400				
11	2/16/2006	LN042	104	Pariso	1	Jimmy Penque	10:02 AM	11900	23700	22.47		22.72	0.25
								14940	48080				
								26840	71780				
12	2/16/2006	LN043	101	Pariso	1	Bill Reinhardt	10:06 AM	11940	23300	22.00		22.16	0.16
								14460	47100				
								26400	70400				
13	2/16/2006	LN044	102	Pariso	1	Steve Cambell	10:19 AM	11960	25020	23.06		23.26	0.20
								14420	47480				
								26380	72500				
14	2/16/2006	LN045	181	Pariso	1	Brian O'Rourke	10:25 AM	11600	22200	21.57		21.88	0.31
								14140	46680				
								25740	68880				
15	2/16/2006	LN046	190	Pariso	1	Jason Brown	10:41 AM	11240	21920	24.35		24.66	0.31
								14200	52220				
								25440	74140				
16	2/16/2006	LN047	210	Pariso	1	Gary Holler	10:47 AM	11800	23800	23.53		23.66	0.13
								14600	49660				
								26400	73460				
17	2/16/2006	LN048	189	Pariso	1	Rob Osborne	10:54 AM	11520	21620	22.47		22.34	(0.13)
								14580	49420				
								26100	71040				
18	2/16/2006	LN049	104	Pariso	1	Jimmy Penque	11:25 AM	11920	24060	22.99		23.28	0.29
								14960	48800				
								26880	72860				

**Shenango Steel Mold Site - NYSDEC Site # 9-15-172**  
**Waste Material Shipping Record and Log**  
**Site Location: LNAPL Area**

19	2/16/2006	LN050	101	Pariso	1	Bill Reinhardt	11:35 AM	11940	24400	23.00		23.30	0.30
								14580	48120				
								26520	72520				
20	2/16/2006	LN051	102	Pariso	1	Steve Cambell	11:47 AM	11940	23500	22.67		22.86	0.19
								14580	48360				
								26520	71860				
21	2/16/2006	LN052	181	Pariso	1	Brian O'Rourke	11:55 AM	11460	20420	20.27		20.56	0.29
								14120	45700				
								25580	66120				
22	2/16/2006	LN053	190	Pariso	1	Jason Brown	12:14 PM	11140	21880	23.94		24.08	0.14
								14180	51320				
								25320	73200				
23	2/16/2006	LN054	210	Pariso	1	Gary Holler	12:19 PM	11740	24980	25.17		25.22	0.05
								14560	51660				
								26300	76640				
24	2/16/2006	LN055	189	Pariso	1	Rob Osborne	12:24 PM	11560	21860	20.40		20.14	(0.26)
								14600	45100				
								26160	66960				
25	2/16/2006	LN056	104	Pariso	1	Jimmy Penque	1:04 PM	11880	23760	24.22		24.40	0.18
								14880	51440				
								26760	75200				
26	2/16/2006	LN057	101	Pariso	1	Bill Reinhardt	1:06 PM	11960	25880	23.08		23.22	0.14
								14460	46700				
								26420	72580				
27	2/16/2006	LN058	181	Pariso	1	Brian O'Rourke	1:28 PM	11480	23380	23.26		23.40	0.14
								14040	48660				
								25520	72040				
28	2/16/2006	LN059	102	Pariso	1	Steve Cambell	1:35 PM	11840	23960	22.61		22.64	0.03
								14460	47560				
								26300	71520				

**Shenango Steel Mold Site - NYSDEC Site # 9-15-172**  
**Waste Material Shipping Record and Log**  
**Site Location: LNAPL Area**

29	2/16/2006	LN060	190	Pariso	1	Jason Brown	1:56 PM	11160	22500	23.47		23.64	0.17
								14340	49940				
								25500	72440				
30	2/16/2006	LN061	210	Pariso	1	Gary Holler	1:58 PM	11720	24200	22.06		21.96	(0.10)
								14680	46320				
								26400	70520				
31	2/16/2006	LN062	189	Pariso	1	Rob Osborne	2:02 PM	11400	23020	23.04		22.62	(0.42)
								14800	49260				
								26200	72280				
32	2/16/2006	LN063	104	Pariso	1	Jimmy Penque	2:25 PM	11820	24260	23.94		24.28	0.34
								15000	50440				
								26820	74700				
33	2/16/2006	LN064	101	Pariso	1	Bill Reinhardt	2:37 PM	11860	23020	21.64		21.86	0.22
								14540	46660				
								26400	69680				
34	2/16/2006	LN065	181	Pariso	1	Brian O'Rourke	3:07PM	11420	22500	23.80	emailed, need manifest	24.10	0.30
								14120	50640				
								25540	73140				
35	2/16/2006	LN066	102	Pariso	1	Steve Cambell	3:13PM	11820	24780	23.40		23.56	0.16
								14520	48360				
								26340	73140				
1	2/17/2006	LN067	104	Pariso	1	Jimmy Penque	7:18AM	12020	21160	19.31	scales would not print due to high wind. Greg OK'd visual reading	19.72	0.41
								15000	44480				
								27020	65640				
2	2/17/2006	LN068		Pariso	1	Bill Reinhardt	6:59 AM	12080	23600	22.41	scales would not print due to high wind. Greg OK'd visual reading	22.86	0.45
								14600	47900				
								26680	71500				
3	2/17/2006	LN069	210	Pariso	1	Gary Holler	7:04 AM	11940	25250	24.90	scales would not print due to high wind. Greg OK'd visual reading	25.20	0.31
								14720	51200				
								26660	76450				

**Shenango Steel Mold Site - NYSDEC Site # 9-15-172**  
**Waste Material Shipping Record and Log**  
**Site Location: LNAPL Area**

4	2/17/2006	LN070	223	Pariso	1	John Murray	7:11 AM	12820	21850	19.69	scales would not print due to high wind. Greg OK'd	21.54	1.85
								14700	45050				
								27520	66900				
5	2/17/2006	LN071	159	Pariso	1	Sherman Abdallah	7:59 AM	11700	22420	29.46	scales would not print due to high wind. Greg OK'd	24.64	(4.82)
								15700	63900				
								27400	86320				
6	2/17/2006	LN072	104	Pariso	1	Jimmy Penque	8:50AM	12020	22220	19.98	scales would not print due to high wind. Greg OK'd	20.48	0.50
								15000	44760				
								27020	66980				
7	2/17/2006	LN073	101	Pariso	1	Bill Reinhardt	8:53AM	12080	24300	22.31	scales would not print due to high wind. Greg OK'd	22.84	0.53
								14600	47000				
								26680	71300				
8	2/17/2006	LN074	210	Pariso	1	Gary Holler	9:10AM	11940	24120	22.61	scales would not print due to high wind. Greg OK'd	23.00	0.39
								14720	47760				
								26660	71880				
9	2/17/2006	LN075	223	Pariso	1	John Murray	9:20 AM	12820	23660	23.58	scales would not print due to high wind. Greg OK'd	23.64	0.06
								14700	51020				
								27520	74680				
10	2/17/2006	LN076	159	Pariso	1	Sherman Abdallah	10:05 AM	11700	22220	23.51	scales would not print due to high wind. Greg OK'd	21.18	(2.33)
								15700	52200				
								27400	74420				
11	2/17/2006	LN077	104	Pariso	1	Jimmy Penque	10:13AM	12020	21920	19.34	scales would not print due to high wind. Greg OK'd	19.84	0.50
								15000	43780				
								27020	65700				
12	2/17/2006	LN078	101	Pariso	1	Bill Reinhardt	10:21 AM	12080	24000	21.28	scales would not print due to high wind. Greg OK'd	21.62	0.34
								14600	45240				
								26680	69240				
13	2/17/2006	LN079	210	Pariso	1	Gary Holler	10:50 AM	11940	23500	22.97	scales would not print due to high wind. Greg OK'd	23.22	0.25
								14720	49100				
								26660	72600				

**Shenango Steel Mold Site - NYSDEC Site # 9-15-172**  
**Waste Material Shipping Record and Log**  
**Site Location: LNAPL Area**

14	2/17/2006	LN080	223	Pariso	1	John Murray	10:58 AM	12820	22400	21.44	scales would not print due to high wind. Greg OK'd visual reading	21.56	0.12
								14700	48000				
								27520	70400				
15	2/17/2006	LN081	104	Pariso	1	Jimmy Penque	11:33 AM	12020	22820	21.34	scales would not print due to high wind. Greg OK'd visual reading	21.74	0.40
								15000	46880				
								27020	69700				
16	2/17/2006	LN082	101	Pariso	1	Bill Reinhardt	11:40 AM	12080	22700	20.91	scales would not print due to high wind. Greg OK'd visual reading	21.10	0.19
								14600	45800				
								26680	68500				
17	2/17/2006	LN083	159	Pariso	1	Sherman Abdallah	11:45 AM	11700	22780	27.81	scales would not print due to high wind. Greg OK'd visual reading	21.64	(6.17)
								15700	60240				
								27400	83020				
18	2/17/2006	LN084	210	Pariso	1	Gary Holler	12:04 PM	11940	24220	23.87	scales would not print due to high wind. Greg OK'd visual reading	24.12	0.25
								14720	50180				
								26660	74400				
19	2/17/2006	LN085	223	Pariso	1	John Murray	12:21 PM	12820	23120	22.66	scales would not print due to high wind. Greg OK'd visual reading	23.42	0.76
								14700	49720				
								27520	72840				
20	2/17/2006	LN086	104	Pariso	1	Jimmy Penque	1:03 PM	12020	24100	21.39	scales would not print due to high wind. Greg OK'd visual reading	21.84	0.45
								15000	45700				
								27020	69800				
21	2/17/2006	LN087	101	Pariso	1	Bill Reinhardt	1:20 PM	12080	25050	23.19	scales would not print due to high wind. Greg OK'd visual reading	23.46	0.28
								14600	48000				
								26680	73050				
22	2/17/2006	LN088	210	Pariso	1	Gary Holler	1:45 PM	11940	25000	23.87	scales would not print due to high wind. Greg OK'd visual reading	24.11	0.24
								14720	49400				
								26660	74400				
23	2/17/2006	LN089	223	Pariso	1	John Murray	2:05 PM	12820	22750	22.87	scales would not print due to high wind. Greg OK'd visual reading	23.85	0.99
								14700	50500				
								27520	73250				

**Shenango Steel Mold Site - NYSDEC Site # 9-15-172**  
**Waste Material Shipping Record and Log**  
**Site Location: LNAPL Area**

24	2/17/2006	LN090	159	Pariso	1	Sherman Abdallah	2:15 PM	11700	21200	20.50	Scales would not print due to high wind. Greg OK'd visual reading	20.18	(0.32)
								15700	47200				
								27400	68400				
25	2/17/2006	LN091	104	Pariso	1	Jimmy Penque	2:30 PM	12020	23400	23.32	Scales would not print due to high wind. Greg OK'd visual reading	23.70	0.38
								15000	50250				
								27020	73650				
26	2/17/2006	LN092	101	Pariso	1	Bill Reinhardt	2:50 PM	12080	21060	22.04	Scales would not print due to high wind. Greg OK'd visual reading	22.28	0.24
								14600	49700				
								26680	70760				
27	2/17/2006	LN093	210	Pariso	1	Gary Holler	2:59 PM	11940	22540	24.84	Scales would not print due to high wind. Greg OK'd visual reading	25.08	0.24
								14720	53800				
								26660	76340				
1	2/20/2006	LN094	194	Pariso	1	Bob Wark	1:40 PM	9980	18600	17.89		18.22	0.33
								12900	40060				
								22880	58660				
2	2/20/2006	LN095	199	Pariso	1	Mike Pariso	2:05 AM	14300	21040	20.37		20.20	(0.17)
								11500	45500				
								25800	66540				
3	2/20/2006	LN096	101	Pariso	1	Bill Reinhardt	2:13 PM	11800	22180	20.20		20.60	0.40
								14720	44740				
								26520	66920				
4	2/20/2006	LN097	181	Pariso	1	Brian O'Rourke	2:23 PM	11200	20260	19.20		19.44	0.24
								13860	43200				
								25060	63460				
5	2/20/2006	LN098	102	Pariso	1	Mike Wilson	2:30 PM	11740	22560	21.74		20.85	(0.89)
								14280	46940				
								26020	69500				
6	2/20/2006	LN099	194	Pariso	1	Bob Wark	3:13 PM	9860	18620	21.55		21.90	0.35
								13000	47340				
								22860	65960				

# Shenango Steel Mold Site - NYSDEC Site # 9-15-172

## Waste Material Shipping Record and Log

Site Location: LNAPL Area

7	2/20/2006	LN100	199	Pariso	1	Mike Pariso	3:29 AM	11500	23260	24.05		24.10	0.05
								14300	50640				
								25800	73900				
1	2/21/2006	LN101	104	Pariso	1	Jimmy Penque	6:48 AM	11960	22660	21.00		21.62	0.62
								15020	46320				
								26980	68980				
2	2/21/2006	LN102	102	Pariso	1	Steve Cambell	6:48 AM	12140	22700	22.00		22.62	0.62
								14580	48020				
								26720	70720				
3	2/21/2006	LN103	101	Pariso	1	Bill Reinhardt	7:02 AM	12080	22760	23.14		23.64	0.50
								14520	50120				
								26600	72880				
4	2/21/2006	LN104	199	Pariso	1	Mike Pariso	7:20 AM	11000	23060	27.23		24.80	(2.43)
								14500	56900				
								25500	79960				
5	2/21/2006	LN105	165	Pariso	1	Paul Harrison	7:24 AM	12680	24320	24.46		25.10	0.64
								13060	50340				
								25740	74660				
6	2/21/2006	LN106	189	Pariso	1	Robert Osborne	7:27 AM	11540	20760	24.13		23.96	(0.17)
								14580	53620				
								26120	74380				
7	2/21/2006	LN107	102	Pariso	1	Steve Cambell	8:39 AM	11940	53140	25.63		25.98	0.35
								14380	24440				
								26320	77580				
8	2/21/2006	LN108	104	Pariso	1	Jimmy Penque	8:40 AM	11800	23800	22.55		22.96	0.41
								14840	47940				
								26640	71740				
9	2/21/2006	LN109	101	Pariso	1	Bill Reinhardt	8:42 AM	11960	22520	21.45		21.78	0.33
								14460	46800				
								26420	69320				



**Shenango Steel Mold Site - NYSDEC Site # 9-15-172**  
**Waste Material Shipping Record and Log**  
**Site Location: LNAPL Area**

10	2/21/2006	LN110	199	Pariso	1	Mike Pariso	8:56 AM	11720	22740	20.91		20.84	(0.07)
								14360	45160				
								26080	67900				
11	2/21/2006	LN111	165	Pariso	1	Paul Harrison	9:10 AM	12640	26600	24.15		23.99	(0.16)
								12880	47220				
								25520	73820				
12	2/21/2006	LN112	189	Pariso	1	Robert Osborne	9:11 AM	11480	23740	24.34		24.20	(0.14)
								14440	50860				
								25920	74600				
13	2/21/2006	LN113	102	Pariso	1	Steve Cambell	10:07 AM	11860	24160	22.74		23.06	0.32
								14420	47600				
								26280	71760				
14	2/21/2006	LN114	104	Pariso	1	Jimmy Penque	10:09 AM	11740	23280	23.87		24.30	0.43
								14880	51080				
								26620	74360				
15	2/21/2006	LN115	101	Pariso	1	Bill Reinhardt	10:22 AM	11860	23880	23.81		24.12	0.31
								14360	49960				
								26220	73840				
16	2/21/2006	LN116	199	Pariso	1	Mike Pariso	10:38 AM	11700	26260	25.30		25.20	(0.10)
								14380	50420				
								26080	76680				
17	2/21/2006	LN117	189	Pariso	1	Robert Osborne	10:57 AM	11440	22060	22.25		22.06	(0.19)
								14580	48460				
								26020	70520				
18	2/21/2006	LN118	165	Pariso	1	Paul Harrison	11:00 AM	12700	22240	24.12		24.34	0.22
								13100	51800				
								25800	74040				
19	2/21/2006	LN119	104	Pariso	1	Jimmy Penque	11:47 AM	11720	24880	22.37		22.66	0.29
								14760	46340				
								26480	71220				

# Shenango Steel Mold Site - NYSDEC Site # 9-15-172

## Waste Material Shipping Record and Log

Site Location: LNAPL Area

20	2/21/2006	LN120	101	Pariso	1	Bill Reinhardt	11:57 AM	11880	22640	24.88		25.20	0.32
								14400	53400				
								26280	76040				
21	2/21/2006	LN121	102	Pariso	1	Steve Cambell	12:23 PM	11880	21980	24.35		24.58	0.23
								14380	52980				
								26260	74960				
22	2/21/2006	LN122	189	Pariso	1	Robert Osborne	12:24 PM	11440	20900	22.44		22.16	(0.28)
								14400	49820				
								25840	70720				
23	2/21/2006	LN123	199	Pariso	1	Mike Pariso	12:26 PM	11660	20800	25.56		25.36	(0.20)
								14360	56340				
								26020	77140				
24	2/21/2006	LN124	165	Pariso	1	Paul Harrison	12:45 PM	12680	23680	22.76		23.34	0.58
								13040	47560				
								25720	71240				
25	2/21/2006	LN125	102	Pariso	1	Steve Cambell	2:02 AM	11780	22260	23.42		23.56	0.14
								14420	50780				
								26200	73040				
26	2/21/2006	LN126	104	Pariso	1	Jimmy Penque	1:37PM	11760	23320	21.08		21.40	0.32
								14820	45420				
								26580	68740				
27	2/21/2006	LN127	101	Pariso	1	Bill Reinhardt	1:55 PM	11800	20240	22.27		22.56	0.29
								14420	50520				
								26220	70760				
28	2/21/2006	LN128	189	Pariso	1	Robert Osborne	2:15PM	11440	19060	23.55		23.22	(0.33)
								14600	54080				
								26040	73140				
29	2/21/2006	LN129	199	Pariso	1	Mike Pariso	2:23PM	11560	21520	23.23		22.42	(0.81)
								14440	50940				
								26000	72460				

**Shenango Steel Mold Site - NYSDEC Site # 9-15-172**  
**Waste Material Shipping Record and Log**  
**Site Location: LNAPL Area**

30	2/21/2006	LN130	165	Pariso	1	Paul Harrison	2:34PM	12340	24020	21.43		22.22	0.79
								12880	44060				
								25220	68080				
31	2/21/2006	LN131	104	Pariso	1	Jimmy Penque	3:02PM	11560	20600	20.67		20.82	0.15
								14980	47280				
								26540	67880				
32	2/21/2006	LN132	199	Pariso	1	Mike Pariso	3:29 AM	11400	24060	27.79		25.72	(2.07)
								14500	57420				
								25900	81480				
1	2/22/2006	LN133	104	Pariso	1	Jimmy Penque	6:49 AM	9860	23060	25.43	First of day, scale may be wrong due to freezing	24.38	(1.05)
								13300	50960				
								23160	74020				
2	2/22/2006	LN134	101	Pariso	1	Bill Reinhardt	6:55 AM	10340	21040	22.68	scale appears light this a.m. judging from previous tare	22.10	(0.58)
								13560	48220				
								23900	69260				
3	2/22/2006	LN135	S83	Pariso	1	Scott Malkiewicz	7:13 AM	12240	19100	17.94		18.16	0.22
								16640	45660				
								28880	64760				
4	2/22/2006	LN136	S80	Pariso	1	Russ Kowalewski	7:15 AM	13280	23280	19.94		21.76	1.82
								16060	45940				
								29340	69220				
5	2/22/2006	LN137	14	Pariso	1	Dan LaForme	7:18 AM	12680	25360	21.87		23.62	1.75
								15860	46920				
								28540	72280				
6	2/22/2006	LN138	104	Pariso	1	Jimmy Penque	8:37 AM	11880	24740	22.75		23.22	0.47
								14700	47340				
								26580	72080				
7	2/22/2006	LN139	101	Pariso	1	Bill Reinhardt	8:43 AM	11820	26240	24.28		24.62	0.34
								14320	48460				
								26140	74700				

**Shenango Steel Mold Site - NYSDEC Site # 9-15-172**  
**Waste Material Shipping Record and Log**  
**Site Location: LNAPL Area**

8	2/22/2006	LN140	S83	Pariso	1	Scott Malkiewicz	9:03 AM	13400	16800	17.54		17.96	0.42
								16860	48540				
								30260	65340				
9	2/22/2006	LN141	S80	Pariso	1	Russ Kowalewski	9:12 AM	15540	24820	18.01		19.28	1.27
								14200	40940				
								29740	65760				
10	2/22/2006	LN142	14	Pariso	1	Dan LaForme	9:39 AM	12620	22340	22.70		23.38	0.68
								15100	50780				
								27720	73120				
11	2/22/2006	LN143	104	Pariso	1	Jimmy Penque	10:18 AM	11900	22100	22.67		23.10	0.43
								14920	50060				
								26820	72160				
12	2/22/2006	LN144	101	Pariso	1	Bill Reinhardt	10:23 AM	11960	24680	22.87		23.26	0.39
								14540	47560				
								26500	72240				
13	2/22/2006	LN145	S83	Pariso	1	Scott Malkiewicz	10:31 AM	13480	18900	18.29		19.48	1.19
								17280	48440				
								30760	67340				
14	2/22/2006	LN146	S80	Pariso	1	Russ Kowalewski	10:49 AM	14420	27900	21.72		23.71	1.99
								15720	45680				
								30140	73580				
15	2/22/2006	LN147	14	Pariso	1	Dan LaForme	10:58 AM	12780	23240	22.98		23.74	0.76
								15300	50800				
								28080	74040				
16	2/22/2006	LN148	101	Pariso	1	Bill Reinhardt	11:49 AM	11940	23540	24.22		24.50	0.28
								14560	51400				
								26500	74940				
17	2/22/2006	LN149	104	Pariso	1	Jimmy Penque	11:50 AM	11620	22200	21.97		22.24	0.27
								14920	48280				
								26540	70480				

**Shenango Steel Mold Site - NYSDEC Site # 9-15-172**  
**Waste Material Shipping Record and Log**  
**Site Location: LNAPL Area**

18	2/22/2006	LN150	S83	Pariso	1	Scott Malkiewicz	12:02 PM	13820	17740	18.02		19.26	1.24
								17380	49500				
								31200	67240				
19	2/22/2006	LN151	S80	Pariso	1	Russ Kowalewski	12:15 PM	14440	25040	20.57		22.00	1.43
								15760	46300				
								30200	71340				
20	2/22/2006	LN152	14	Pariso	1	Dan LaForme	12:31 PM	12740	23020	23.37		24.04	0.67
								15320	51780				
								28060	74800				
21	2/22/2006	LN153	101	Pariso	1	Bill Reinhardt	1:41PM	11860	23620	21.50		21.70	0.20
								14540	45780				
								26400	69400				
22	2/22/2006	LN154	104	Pariso	1	Jimmy Penque	1:47PM	11780	24080	23.20		23.42	0.22
								14840	48940				
								26620	73020				
23	2/22/2006	LN155	S80	Pariso	1	Russ Kowalewski	2:22PM	14400	25640	18.56		20.10	1.54
								15780	41660				
								30180	67300				
24	2/22/2006	LN156	S83	Pariso	1	Scott Malkiewicz	2:23PM	13780	18040	17.72		19.12	1.40
								17600	48780				
								31380	66820				
25	2/22/2006	LN157	14	Pariso	1	Dan LaForme	2:26PM	12760	22760	23.02		23.80	0.78
								15360	51400				
								28120	74160				
26	2/22/2006	LN158	101	Pariso	1	Bill Reinhardt	2:52 PM	11840	23000	24.12	first loads on frozen scale, may be wrong	24.24	0.12
								14460	51540				
								26300	74540				
1	2/24/2006	LN159	104	Pariso	1	Jimmy Penque	6:58 AM	11640	22880	21.19	first loads on frozen scale, may be wrong	22.84	1.65
								14520	45660				
								26160	68540				

**Shenango Steel Mold Site - NYSDEC Site # 9-15-172**  
**Waste Material Shipping Record and Log**  
**Site Location: LNAPL Area**

2	2/24/2006	LN160	101	Pariso	1	Bill Reinhardt	6:59 AM	12740	24680	21.80		23.46	1.66
								14860	46520				
								27600	71200				
3	2/24/2006	LN161	102	Pariso	1	Mike Wilson	7:06 AM	12260	22900	21.30		22.08	0.78
								14540	46500				
								26800	69400				
4	2/24/2006	LN162	163	Pariso	1	Rick Nicosia	7:28 AM	12100	25080	24.12		23.16	(0.96)
								14320	49580				
								26420	74660				
5	2/24/2006	LN163	159	Pariso	1	Sherman Abdallah	7:31 AM	11280	26180	25.61		24.88	(0.73)
								15260	51580				
								26540	77760				
6	2/24/2006	LN164	104	Pariso	1	Jimmy Penque	8:34 AM	11140	23540	20.77		21.32	0.55
								14160	43300				
								25300	66840				
7	2/24/2006	LN165	101	Pariso	1	Bill Reinhardt	8:38 AM	11460	21960	22.30		22.88	0.58
								13680	47780				
								25140	69740				
8	2/24/2006	LN166	102	Pariso	1	Mike Wilson	8:46 AM	11900	23880	21.97		23.16	1.19
								14140	46100				
								26040	69980				
9	2/24/2006	LN167	163	Pariso	1	Rick Nicosia	9:39 AM	11620	25140	20.02		20.00	(0.02)
								14400	40920				
								26020	66060				
10	2/24/2006	LN168	159	Pariso	1	Sherman Abdallah	9:49 AM	11520	21460	22.32		22.76	0.44
								15520	50220				
								27040	71680				
11	2/24/2006	LN169	104	Pariso	1	Jimmy Penque	10:02 AM	11460	23760	24.11		24.68	0.57
								14200	50120				
								25660	73880				

# Shenango Steel Mold Site - NYSDEC Site # 9-15-172

## Waste Material Shipping Record and Log

Site Location: LNAPL Area

12	2/24/2006	LN170	101	Pariso	1	Bill Reinhardt	10:19 AM	11360	24580	24.93		24.96	0.03
								13660	50300				
								25020	74880				
13	2/24/2006	LN171	102	Pariso	1	Mike Wilson	10:37 AM	11740	23880	23.35		23.68	0.33
								14140	48700				
								25880	72580				
14	2/24/2006	LN172	163	Pariso	1	Rick Nicosia	11:18 AM	12320	23620	22.84		22.72	(0.12)
								14800	49180				
								27120	72800				
15	2/24/2006	LN173	104	Pariso	1	Jimmy Penque	11:42 AM	11720	21880	21.43		21.72	0.29
								14840	47540				
								26560	69420				
16	2/24/2006	LN174	159	Pariso	1	Sherman Abdallah	11:48 AM	11920	21920	20.05		20.68	0.63
								16240	46340				
								28160	68260				
17	2/24/2006	LN175	101	Pariso	1	Bill Reinhardt	12:12 PM	11960	22840	24.05		24.32	0.27
								14360	51580				
								26320	74420				
18	2/24/2006	LN176	102	Pariso	1	Mike Wilson	12:13 PM	11940	19200	20.94	light weight because front wheel not on	21.32	0.38
								14740	49360				
								26680	68560				
1	3/2/2006	LN177	100	Pariso	1	Steve Cambell	10:36 AM	8280	30360	13.38		13.76	0.38
								10580	15260				
								18860	45620				
2	3/2/2006	LN178	101	Pariso	1	Bill Reinhardt	11:03 AM	10700	44580	20.89		22.46	1.57
								14000	21900				
								24700	66480				
3	3/2/2006	LN179	104	Pariso	1	Jimmy Penque	11:11 AM	11380	47100	23.06		23.90	0.84
								14060	24460				
								25440	71560				

**Shenango Steel Mold Site - NYSDEC Site # 9-15-172**  
**Waste Material Shipping Record and Log**  
**Site Location: LNAPL Area**

4	3/2/2006	LN180	102	Pariso	1	Mike Wilson	11:16 AM	11400	23900	21.91		23.66	1.75
								14240	45560				
								25640	69460				
5	3/2/2006	LN181	100	Pariso	1	Steve Cambell	12:14 PM	10100	37140	16.40		16.76	0.36
								12700	18460				
								22800	55600				
6	3/2/2006	LN182	101	Pariso	1	Bill Reinhardt	12:39 PM	11520	46880	22.44		22.80	0.37
								14320	23830				
								25840	70710				
7	3/2/2006	LN183	104	Pariso	1	Jimmy Penque	12:58 PM	11760	22200	24.88		22.76	(2.12)
								14900	54220				
								26660	76420				
8	3/2/2006	LN184	102	Pariso	1	Mike Wilson	12:59 PM	11580	44300	20.20		21.22	1.02
								14400	22080				
								25980	66380				
9	3/2/2006	LN185	100	Pariso	1	Steve Cambell	1:51 PM	10240	38840	17.49		16.56	(0.93)
								13180	19560				
								23420	58400				
10	3/2/2006	LN186	101	Pariso	1	Bill Reinhardt	2:14 PM	11620	52680	25.94		26.54	0.60
								14340	25160				
								25960	77840				
11	3/2/2006	LN187	102	Pariso	1	Mike Wilson	2:44 PM	12000	24080	23.68		24.84	1.16
								14340	49620				
								26340	73700				
12	3/2/2006	LN188	104	Pariso	1	Jimmy Penque	2:50 PM	11560	50940	24.56		25.64	1.08
								14860	24600				
								26420	75540				
1	3/3/2006	LN189	100	Pariso	1	Steve Cambell	6:52 AM	9140	31480	12.84	ticket is hard to read	13.76	0.92
								11640	14980				
								20780	46460				



**Shenango Steel Mold Site - NYSDEC Site # 9-15-172**  
**Waste Material Shipping Record and Log**  
**Site Location: LNAPL Area**

2	3/3/2006	LN190	104	Pariso	1	Jimmy Penque	6:53 AM	11340	22640	24.35		23.36	(0.99)
								12920	50320				
								24260	72960				
3	3/3/2006	LN191	101	Pariso	1	Bill Reinhardt	7:01 AM	10640	53340	25.18		22.02	(3.16)
								13480	21140				
								24120	74480				
4	3/3/2006	LN192	102	Pariso	1	Mike Wilson	7:16 AM	11340	45600	20.45	ticket is hard to read	20.16	(0.29)
								13280	19920				
								24620	65520				
5	3/3/2006	LN193	166	Pariso	1	Vinny Potter	7:42 AM	11320	42040	18.29		21.98	3.69
								14760	20620				
								26080	62660				
6	3/3/2006	LN194	165	Pariso	1	Henry Godert	7:49 AM	12440	45420	21.63		22.54	0.91
								13040	23320				
								25480	68740				
7	3/3/2006	LN195	100	Pariso	1	Steve Cambell	8:58 AM	10540	41580	16.72		17.70	0.98
								13720	16120				
								24260	57700				
8	3/3/2006	LN196	104	Pariso	1	Jimmy Penque	9:01 AM	11740	48340	22.19		22.48	0.29
								14860	22640				
								26600	70980				
9	3/3/2006	LN197	101	Pariso	1	Bill Reinhardt	9:11 AM	11680	46840	21.24	scale would not print rears	23.76	2.52
								14860	22180				
								26540	69020				
10	3/3/2006	LN198	102	Pariso	1	Mike Wilson	9:19 AM	11940	48040	21.83		22.48	0.65
								14680	22240				
								26620	70280				
11	3/3/2006	LN199	166	Pariso	1	Vinny Potter	9:32 AM	12240	19760	21.89		24.38	2.49
								15580	51840				
								27820	71600				

**Shenango Steel Mold Site - NYSDEC Site # 9-15-172**  
**Waste Material Shipping Record and Log**  
**Site Location: LNAPL Area**

12	3/3/2006	LN200	165	Pariso	1	Henry Godert	9:35 AM	12340	22740	23.36		26.46	3.10
								13100	49420				
								25440	72160				
13	3/3/2006	LN201	100	Pariso	1	Steve Cambell	10:34 AM	10440	15300	16.47		17.18	0.71
								13880	41960				
								24320	57260				
14	3/3/2006	LN202	104	Pariso	1	Jimmy Penque	10:47 AM	11900	52540	23.78		24.44	0.66
								15040	21960				
								26940	74500				
15	3/3/2006	LN203	172	Pariso	1	Paul Harrison	11:03 AM	11340	50160	21.97		24.48	2.51
								13920	19040				
								25260	69200				
16	3/3/2006	LN204	101	Pariso	1	Bill Reinhardt	11:05 AM	11720	48020	22.64		22.90	0.26
								14340	23320				
								26060	71340				
17	3/3/2006	LN205	102	Pariso	1	Mike Wilson	11:09 AM	11880	23000	23.05	did not print fronts	23.80	0.75
								14720	49700				
								26600	72700				
18	3/3/2006	LN206	166	Pariso	1	Vinny Potter	11:14 AM	12140	44700	18.29		22.32	4.03
								15840	19860				
								27980	64560				
19	3/3/2006	LN207	190	Pariso	1	Jason Brown	11:28 AM	11320	53240	24.72		25.30	0.58
								14520	22040				
								25840	75280				
20	3/3/2006	LN208	165	Pariso	1	Henry Godert	11:37 AM	12340	24720	23.60		24.34	0.74
								13160	47980				
								25500	72700				
21	3/3/2006	LN209	189	Pariso	1	Robert Osborne	12:05 PM	11480	22940	23.57		23.38	(0.19)
								14560	50240				
								26040	73180				

**Shenango Steel Mold Site - NYSDEC Site # 9-15-172**  
**Waste Material Shipping Record and Log**  
**Site Location: LNAPL Area**

22	3/3/2006	LN210	104	Pariso	1	Jimmy Penque	12:17 PM	11760	52360	23.92		24.22	0.30
								15040	22280				
								26800	74640				
23	3/3/2006	LN211	100	Pariso	1	Steve Cambell	12:29 PM	10520	41420	16.57		18.00	1.43
								13200	15440				
								23720	56860				
24	3/3/2006	LN212	102	Pariso	1	Mike Wilson	1:02 PM	12000	55200	24.14		24.26	0.12
								14600	19680				
								26600	74880				
25	3/3/2006	LN213	101	Pariso	1	Bill Reinhardt	12:41 PM	11800	23840	23.36		23.48	0.12
								14480	49160				
								26280	73000				
26	3/3/2006	LN214	172	Pariso	1	Paul Harrison	1:16 PM	11560	23020	23.73		28.00	4.27
								14320	50320				
								25880	73340				
27	3/3/2006	LN215	190	Pariso	1	Jason Brown	1:30 PM	11500	21600	23.29		23.98	0.69
								14680	51160				
								26180	72760				
28	3/3/2006	LN216	165	Pariso	1	Henry Godert	1:37 PM	12540	24200	25.48		26.18	0.70
								13380	52680				
								25920	76880				
29	3/3/2006	LN217	189	Pariso	1	Robert Osborne	1:50 PM	11480	18340	22.19		21.98	(0.21)
								14740	52260				
								26220	70600				
30	3/3/2006	LN218	166	Pariso	1	Vinny Potter	2:11PM	12300	20640	20.83		24.04	3.21
								16200	49520				
								28500	70160				
31	3/3/2006	LN219	104	Pariso	1	Jimmy Penque	2:21 AM	11800	20000	22.90		22.16	(0.74)
								14840	52440				
								26640	72440				

**Shenango Steel Mold Site - NYSDEC Site # 9-15-172**  
**Waste Material Shipping Record and Log**  
**Site Location: LNAPL Area**

32	3/3/2006	LN220	101	Pariso	1	Bill Reinhardt	2:22 PM	11860	23320	25.43		25.60	0.17
								14480	53880				
								26340	77200				
33	3/3/2006	LN221	100	Pariso	1	Steve Cambell	2:26PM	10580	17700	17.58		17.78	0.20
								13040	41080				
								23620	58780				
34	3/3/2006	LN222	102	Pariso	1	Mike Wilson	2:40 PM	11900	23420	22.72		23.02	0.30
								14780	48700				
								26680	72120				
1	3/6/2006	LN223	100	Pariso	1	Steve Cambell	6:53 AM	10380	17640	17.36		17.72	0.36
								12960	40420				
								23340	58060				
2	3/6/2006	LN224	104	Pariso	1	Jimmy Penque	6:54 AM	11540	22840	22.24		22.54	0.30
								14760	47940				
								26300	70780				
3	3/6/2006	LN225	101	Pariso	1	Bill Reinhardt	6:58 AM	11760	52430	24.77		25.16	0.40
								14420	23280				
								26180	75710				
4	3/6/2006	LN226	223	Pariso	1	John Murray	7:20 AM	12400	51340	23.24		23.74	0.50
								14380	21920				
								26780	73260				
5	3/6/2006	LN227	217	Pariso	1	Dennis Wolf	7:37 AM	11980	51060	24.05		24.32	0.27
								14140	23160				
								26120	74220				
6	3/6/2006	LN228	166	Pariso	1	Vinny Potter	7:56 AM	11940	54200	24.79		25.28	0.49
								14960	22280				
								26900	76480				
7	3/6/2006	LN229	172	Pariso	1	Paul Harrison	8:44 AM	11500	51160	22.42		22.86	0.44
								13840	19020				
								25340	70180				

**Shenango Steel Mold Site - NYSDEC Site # 9-15-172**  
**Waste Material Shipping Record and Log**  
**Site Location: LNAPL Area**

8	3/6/2006	LN230	104	Pariso	1	Jimmy Penque	5:52 AM	11640	23820	25.21		25.50	0.29
								14860	53100				
								26500	76920				
9	3/6/2006	LN231	101	Pariso	1	Bill Reinhardt	8:53 AM	11840	55980	25.94		25.22	(0.72)
								14360	22100				
								26200	78080				
10	3/6/2006	LN232	102	Pariso	1	Steve Cambell	8:59 AM	11920	49560	23.48		23.82	0.34
								14640	23960				
								26560	73520				
11	3/6/2006	LN233	223	Pariso	1	John Murray	9:13 AM	12500	53460	23.96		24.12	0.16
								14360	21320				
								26860	74780				
12	3/6/2006	LN234	217	Pariso	1	Dennis Wolf	9:20 AM	11960	51320	23.86		24.06	0.20
								14140	22500				
								26100	73820				
13	3/6/2006	LN235	166	Pariso	1	Vinny Potter	9:31 AM	11980	52000	23.16		23.40	0.24
								15020	21320				
								27000	73320				
14	3/6/2006	LN236	163	Pariso	1	Salvatore Catanese	10:00 AM	12660	27520	23.38		23.90	0.52
								14860	46760				
								27520	74280				
15	3/6/2006	LN237	172	Pariso	1	Paul Harrison	10:24 AM	11400	19600	24.92		24.10	(0.82)
								13920	55560				
								25320	75160				
16	3/6/2006	LN238	104	Pariso	1	Jimmy Penque	10:26 AM	11580	23560	23.99		24.16	0.17
								14800	50800				
								26380	74360				
17	3/6/2006	LN239	101	Pariso	1	Bill Reinhardt	10:33 AM	11880	22160	24.57		24.92	0.35
								14400	53260				
								26280	75420				

**Shenango Steel Mold Site - NYSDEC Site # 9-15-172**  
**Waste Material Shipping Record and Log**  
**Site Location: LNAPL Area**

18	3/6/2006	LN240	102	Pariso	1	Steve Cambell	10:40 AM	11940	24700	23.62		23.74	0.12
								14740	49220				
								26680	73920				
19	3/6/2006	LN241	223	Pariso	1	John Murray	11:05 AM	14400	51700	23.17		23.46	0.29
								12460	21500				
								26860	73200				
20	3/6/2006	LN242	217	Pariso	1	Dennis Wolf	11:11 AM	11820	51960	23.60		23.64	0.04
								14160	21220				
								25980	73180				
21	3/6/2006	LN243	163	Pariso	1	Salvatore Catanese	11:46 AM	12740	26320	24.41		24.88	0.47
								14880	50120				
								27620	76440				
22	3/6/2006	LN244	104	Pariso	1	Jimmy Penque	12:05 PM	11620	24020	23.76		23.92	0.16
								14760	49880				
								26380	73900				
23	3/6/2006	LN245	101	Pariso	1	Bill Reinhardt	12:17 PM	11880	22540	22.49		22.74	0.25
								14400	48720				
								26280	71260				
24	3/6/2006	LN246	102	Pariso	1	Steve Cambell	12:35PM	11680	21720	24.09		24.18	0.09
								14500	52640				
								26180	74360				
25	3/6/2006	LN247	172	Pariso	1	Paul Harrison	12:42PM	11340	19160	22.33		21.22	(1.11)
								13920	50760				
								25260	69920				
26	3/6/2006	LN248	223	Pariso	1	John Murray	12:57 PM	14500	52920	23.25		23.48	0.23
								12380	20460				
								26880	73380				
27	3/6/2006	LN249	217	Pariso	1	Dennis Wolf	1:07PM	11860	20440	24.20		24.24	0.04
								14140	53960				
								26000	74400				

**Shenango Steel Mold Site - NYSDEC Site # 9-15-172**  
**Waste Material Shipping Record and Log**  
**Site Location: LNAPL Area**

28	3/6/2006	LN250	163	Pariso	1	Salvatore Catanese	1:24 PM	12760	23260	23.01		23.36	0.35
								14900	50420				
								27660	73680				
29	3/6/2006	LN251	104	Pariso	1	Jimmy Penque	1:46 PM	11540	23820	25.11		24.27	(0.84)
								14780	52720				
								26320	76540				
30	3/6/2006	LN252	102	Pariso	1	Steve Cambell	1:50 PM	11660	53280	25.84		25.94	0.10
								14440	24500				
								26100	77780				
31	3/6/2006	LN253	101	Pariso	1	Bill Reinhardt	2:01 PM	14400	21660	22.20		22.28	0.08
								11780	48920				
								26180	70580				
32	3/6/2006	LN254	172	Pariso	1	Paul Harrison	2:16 PM	11300	21620	25.25		24.06	(1.19)
								13880	54060				
								25180	75680				
33	3/6/2006	LN255	223	Pariso	1	John Murray	2:19 PM	12420	21520	21.34		22.06	0.72
								14440	48020				
								26860	69540				
1	3/7/2006	LN256	102	Pariso	1	Steve Cambell	6:53 AM	12280	22840	18.55	Material Stuck in Bed	24.68	6.13
								23620	50160				
								35900	73000				
2	3/7/2006	LN257	104	Pariso	1	Jimmy Penque	6:55 AM	11460	22300	22.55		23.08	0.53
								14740	49000				
								26200	71300				
3	3/7/2006	LN258	101	Pariso	1	Bill Reinhardt	6:56 AM	11440	22440	21.28		22.32	1.04
								15920	47480				
								27360	69920				
4	3/7/2006	LN259	166	Pariso	1	Vinny Potter	8:21 AM	11540	21980	23.62		23.62	0.00
								14620	51420				
								26160	73400				

# Shenango Steel Mold Site - NYSDEC Site # 9-15-172

## Waste Material Shipping Record and Log

Site Location: LNAPL Area

5	3/7/2006	LN260	102	Pariso	1	Steve Cambell	8:37 AM	11620	51960	23.56		23.82	0.26
								14720	21500				
								26340	73460				
									<b>Totals:</b>	<b>5857.96</b>		<b>5955.27</b>	<b>97.31</b>



**Shenango Steel Mold Site - NYSDEC Site #9-15-172**  
**Waste Material Shipping Record and Log**  
**Site Location: Target Grid Area**

Load # for Day	Date In:	Project Load No.	Truck No.	Transporter Name:	Profile	Driver Name	Time In	Tare Weight In (lbs.)	Gross Weight Out (lbs)	Site Exit Weight (Tons)	Site Note	Landfill Weight (Tons)	Difference (Tons)
1	2/27/2006	TG001	104	Pariso	2	Jimmy Penque	6:51 AM	10740	21880	21.63		22.00	0.37
								14280	46400				
								25020	68280				
2	2/27/2006	TG002	101	Pariso	2	Bill Reinhardt	6:58 AM	11520	22560	24.36	Hard to tell weight, printed over old weight	24.32	(0.04)
								13840	51520				
								25360	74080				
3	2/27/2006	TG003	102	Pariso	2	Mike Wilson	7:07 AM	11720	22960	23.64		24.02	0.38
								14060	50100				
								25780	73060				
4	2/27/2006	TG004	100	Pariso	2	Steve Cambell	7:13 AM	10160	16960	15.23		15.54	0.31
								12560	36220				
								22720	53180				
5	2/27/2006	TG005	163	Pariso	2	Rick Nicosia	7:32 AM	12220	22620	23.21		25.22	2.01
								14680	50700				
								26900	73320				
6	2/27/2006	TG006	104	Pariso	2	Jimmy Penque	8:46 AM	11520	21260	22.45		23.24	0.79
								14500	49660				
								26020	70920				
7	2/27/2006	TG007	100	Pariso	2	Steve Cambell	9:13 AM	10120	15780	15.06		15.34	0.28
								12660	37120				
								22780	52900				
8	2/27/2006	TG008	101	Pariso	2	Bill Reinhardt	9:18 AM	11620	22420	21.39	added one bucket on the way out	22.86	1.47
								14080	46060				
								25700	68480				
9	2/27/2006	TG009	163	Pariso	2	Rick Nicosia	9:38 AM	12260	22480	20.30	added one bucket on the way out	23.76	3.46
								14740	45120				
								27000	67600				

**Shenango Steel Mold Site - NYSDEC Site #9-15-172**  
**Waste Material Shipping Record and Log**  
**Site Location: Target Grid Area**

10	2/27/2006	TG010	104	Pariso	2	Jimmy Penque	10:32 AM	11500	21380	21.35		21.74	0.39
								14620	47440				
								26120	68820				
11	2/27/2006	TG011	102	Pariso	2	Mike Wilson	10:47 AM	11780	22060	20.76		21.12	0.36
								14340	45580				
								26120	67640				
12	2/27/2006	TG012	101	Pariso	2	Bill Reinhardt	10:52 AM	11660	23020	23.90		24.10	0.20
								14180	50620				
								25840	73640				
13	2/27/2006	TG013	100	Pariso	2	Steve Cambell	10:53 AM	10200	16840	15.01		15.12	0.11
								12840	36220				
								23040	53060				
14	2/27/2006	TG014	163	Pariso	2	Rick Nicosia	11:32 AM	12560	22280	23.32		24.52	1.20
								14860	51780				
								27420	74060				
15	2/27/2006	TG015	104	Pariso	2	Jimmy Penque	12:32 PM	11880	21980	21.98		22.28	0.30
								14520	48380				
								26400	70360				
16	2/27/2006	TG016	102	Pariso	2	Mike Wilson	12:39 PM	11560	21900	21.22		21.48	0.26
								14780	46880				
								26340	68780				
17	2/27/2006	TG017	100	Pariso	2	Steve Cambell	12:39 PM	10300	15960	13.09		13.14	0.05
								12940	33460				
								23240	49420				
18	2/27/2006	TG018	101	Pariso	2	Bill Reinhardt	12:40 PM	11800	22600	23.37		23.60	0.23
								14360	50300				
								26160	72900				
19	2/27/2006	TG019	209	Pariso	2	Dennis Cogley	12:51 PM	10540	18360	23.65		23.70	0.05
								13220	52700				
								23760	71060				

**Shenango Steel Mold Site - NYSDEC Site #9-15-172**  
**Waste Material Shipping Record and Log**  
**Site Location: Target Grid Area**

20	2/27/2006	TG020	163	Pariso	2	Rick Nicosia	1:27 PM	12720	23020	24.14		25.42	1.28
								15000	52980				
								27720	76000				
21	2/27/2006	TG021	104	Pariso	2	Jimmy Penque	2:05 PM	11580	20500	21.29		26.34	5.05
								14820	48480				
								26400	68980				
22	2/27/2006	TG022	100	Pariso	2	Steve Cambell	2:21 PM	10320	17520	16.86		17.02	0.16
								12960	39480				
								23280	57000				
23	2/27/2006	TG023	101	Pariso	2	Bill Reinhardt	2:29 PM	11840	22940	24.87		25.08	0.21
								14400	53040				
								26240	75980				
24	2/27/2006	TG024	209	Pariso	2	Dennis Cogley	2:31 PM	10440	19000	23.12	can't read ticket, printed over other number	23.04	(0.08)
								13260	50940				
								23700	69940				
25	2/27/2006	TG025	163	Pariso	2	Rick Nicosia	3:05 PM	12760	22840	23.93		25.00	1.07
								14960	52740				
								27720	75580				
1	2/28/2006	TG026	104	Pariso	2	Jimmy Penque	6:46 AM	9600	16860	19.23	first loads on frozen scale, may be wrong	23.96	4.73
								12180	43380				
								21780	60240				
2	2/28/2006	TG027	101	Pariso	2	Bill Reinhardt	6:54 AM	8620	19140	26.56	first loads on frozen scale, may be wrong	24.32	(2.24)
								12340	54940				
								20960	74080				
3	2/28/2006	TG028	102	Pariso	2	Mike Wilson	7:10 AM	10320	20480	21.74	first loads on frozen scale, may be wrong	23.64	1.90
								13200	46520				
								23520	67000				
4	2/28/2006	TG029	100	Pariso	2	Steve Cambell	7:13 AM	9040	15900	15.61	first loads on frozen scale, may be wrong	16.50	0.89
								11420	35780				
								20460	51680				

# Shenango Steel Mold Site - NYSDEC Site #9-15-172

## Waste Material Shipping Record and Log

Site Location: Target Grid Area

5	2/28/2006	TG030	163	Pariso	2	Rick Nicosia	7:39 AM	11620	21280	18.18	first loads on frozen scale, may be wrong	21.64	3.46
								13300	40000				
								24920	61280				
6	2/28/2006	TG031	104	Pariso	2	Jimmy Penque	8:45AM	10480	18680	19.94	scale appears light this a.m. judging from previous tare	21.98	2.04
								13220	44900				
								23700	63580				
7	2/28/2006	TG032	102	Pariso	2	Mike Wilson	9:03AM	10760	20400	21.11	scale appears light this a.m. judging from previous tare	22.50	1.39
								14120	46700				
								24880	67100				
8	2/28/2006	TG033	101	Pariso	2	Bill Reinhardt	9:05AM	9760	19560	21.13	scale appears light this a.m. judging from previous tare	22.42	1.29
								13520	45980				
								23280	65540				
9	2/28/2006	TG034	100	Pariso	2	Steve Cambell	9:13AM	8780	13960	13.38	Steve was OK with load weight	13.86	0.48
								11700	33280				
								20480	47240				
10	2/28/2006	TG035	163	Pariso	2	Rick Nicosia	9:35AM	11620	20680	19.70		22.84	3.14
								13880	44220				
								25500	64900				
11	2/28/2006	TG036	102	Pariso	2	Mike Wilson	10:45AM	11240	20400	20.54		21.14	0.60
								13980	45900				
								25220	66300				
12	2/28/2006	TG037	104	Pariso	2	Jimmy Penque	11:05AM	10880	20720	23.28		23.64	0.36
								13720	50440				
								24600	71160				
13	2/28/2006	TG038	101	Pariso	2	Bill Reinhardt	11:05AM	10560	21640	25.17		25.74	0.57
								13660	52920				
								24220	74560				
14	2/28/2006	TG039	100	Pariso	2	Steve Cambell	10:42 AM	9860	15220	16.33		15.00	(1.33)
								12460	39760				
								22320	54980				

**Shenango Steel Mold Site - NYSDEC Site #9-15-172**  
**Waste Material Shipping Record and Log**  
**Site Location: Target Grid Area**

15	2/28/2006	TG040	163	Pariso	2	Rick Nicosia	11:15 AM	11620	21700	22.83	scale malfunctioned, used last tare weight; scales working for loaded weight.	23.76	0.93
								13880	49460				
								25500	71160				
16	2/28/2006	TG041	102	Pariso	2	Mike Wilson	12:04 PM	11820	23180	23.68		24.08	0.40
								14560	50560				
								26380	73740				
17	2/28/2006	TG042	104	Pariso	2	Jimmy Penque	12:13 PM	11540	21620	24.34		24.66	0.32
								14760	53360				
								26300	74980				
18	2/28/2006	TG043	101	Pariso	2	Bill Reinhardt	12:25 PM	11780	22280	22.29		22.58	0.29
								14340	48420				
								26120	70700				
6	3/7/2006	TG044	101	Pariso	2	Bill Reinhardt	8:48 AM	11760	22020	21.17		21.42	0.25
								14360	46440				
								26120	68460				
7	3/7/2006	TG045	104	Pariso	2	Jimmy Penque	8:27 AM	11660	49620	22.83		23.02	0.19
								14460	22160				
								26120	71780				
8	3/7/2006	TG046	166	Pariso	2	Vinny Potter	9:59 AM	11560	17120	23.41		23.54	0.13
								14620	55880				
								26180	73000				
9	3/7/2006	TG047	104	Pariso	2	Jimmy Penque	10:27 AM	11640	22540	23.59		23.84	0.25
								14760	51040				
								26400	73580				
10	3/7/2006	TG048	102	Pariso	2	Steve Cambell	10:28 AM	11720	22240	23.08		23.32	0.24
								14520	50160				
								26240	72400				
11	3/7/2006	TG049	101	Pariso	2	Bill Reinhardt	10:33 AM	11820	22120	24.25		24.44	0.19
								14380	52580				
								26200	74700				

# Shenango Steel Mold Site - NYSDEC Site #9-15-172

## Waste Material Shipping Record and Log

Site Location: Target Grid Area

12	3/7/2006	TG050	166	Pariso	2	Vinny Potter	11:44 AM	11460	19480	26.21		24.90	(1.31)
								14600	59000				
								26060	78480				
13	3/7/2006	TG051	104	Pariso	2	Jimmy Penque	12:20 PM	11620	20920	22.23		22.52	0.29
								14780	49940				
								26400	70860				
14	3/7/2006	TG052	102	Pariso	2	Steve Cambell	12:25 PM	11680	23360	24.69		24.72	0.03
								14500	52200				
								26180	75560				
15	3/7/2006	TG053	101	Pariso	2	Bill Reinhardt	12:28 PM	11820	22140	23.23		23.46	0.23
								14420	50560				
								26240	72700				
16	3/7/2006	TG054	166	Pariso	2	Vinny Potter	1:31 PM	11520	19900	26.14		24.78	(1.36)
								14640	58540				
								26160	78440				
17	3/7/2006	TG055	104	Pariso	2	Jimmy Penque	1:54 PM	11600	21780	23.39		23.70	0.31
								14780	51380				
								26380	73160				
18	3/7/2006	TG056	102	Pariso	2	Steve Cambell	2:01 PM	11660	22800	23.51		23.64	0.13
								14500	50380				
								26160	73180				
19	3/7/2006	TG057	101	Pariso	2	Bill Reinhardt	2:10 PM	11800	21760	22.87		23.08	0.21
								14400	50180				
								26200	71940				
1	3/8/2006	TG058	100	Pariso	2	Steve Cambell	7:00 AM	10340	17320	17.90		18.56	0.66
								13360	42180				
								23700	59500				
2	3/8/2006	TG059	104	Pariso	2	Jimmy Penque	7:01 AM	12140	22360	22.67		23.50	0.83
								15200	50320				
								27340	72680				

**Shenango Steel Mold Site - NYSDEC Site #9-15-172**  
**Waste Material Shipping Record and Log**  
**Site Location: Target Grid Area**

3	3/8/2006	TG060	101	Pariso	2	Bill Reinhardt	7:03 AM	12220	22560	24.58		25.38	0.80
								14880	53700				
								27100	76260				
4	3/8/2006	TG061	102	Pariso	2	Mike Wilson	7:10 AM	11800	22660	24.70		24.84	0.14
								14580	53120				
								26380	75780				
5	3/8/2006	TG062	100	Pariso	2	Steve Cambell	9:00AM	10360	18180	20.41		20.66	0.25
								12940	45940				
								23300	64120				
6	3/8/2006	TG063	104	Pariso	2	Jimmy Penque	9:07AM	11560	21840	24.19		24.44	0.25
								14740	52840				
								26300	74680				
7	3/8/2006	TG064	101	Pariso	2	Bill Reinhardt	9:17AM	14360	22860	25.82		25.48	(0.34)
								11820	54960				
								26180	77820				
8	3/8/2006	TG065	102	Pariso	2	Mike Wilson	9:05 AM	11860	23180	25.21		25.38	0.17
								14540	53640				
								26400	76820				
9	3/8/2006	TG066	100	Pariso	2	Steve Cambell	10:37 AM	10380	16940	22.60		22.86	0.26
								12980	51620				
								23360	68560				
10	3/8/2006	TG067	104	Pariso	2	Jimmy Penque	10:39 AM	11580	21880	25.33		25.58	0.25
								14760	55120				
								26340	77000				
11	3/8/2006	TG068	101	Pariso	2	Bill Reinhardt	10:43 AM	11780	22800	23.82		24.02	0.20
								14380	51000				
								26160	73800				
12	3/8/2006	TG069	102	Pariso	2	Mike Wilson	10:55 AM	11760	22240	24.96		25.06	0.10
								14540	53980				
								26300	76220				

# Shenango Steel Mold Site - NYSDEC Site #9-15-172

## Waste Material Shipping Record and Log

Site Location: Target Grid Area

13	3/8/2006	TG070	100	Pariso	2	Steve Cambell	12:17 PM	10360	18400	21.22		21.42	0.20
								12920	47320				
								23280	65720				
14	3/8/2006	TG071	104	Pariso	2	Jimmy Penque	12:22 PM	11560	21340	22.11		22.42	0.31
								14780	49220				
								26340	70560				
15	3/8/2006	TG072	101	Pariso	2	Bill Reinhardt	12:32 PM	11840	22620	25.00		25.24	0.24
								14400	53620				
								26240	76240				
16	3/8/2006	TG073	102	Pariso	2	Mike Wilson	12:40 PM	11720	22000	22.74		22.98	0.24
								14560	49760				
								26280	71760				
17	3/8/2006	TG074	100	Pariso	2	Steve Cambell	1:54 PM	10340	18840	23.84		24.08	0.24
								12980	52160				
								23320	71000				
18	3/8/2006	TG075	104	Pariso	2	Jimmy Penque	2:16 PM	11520	21340	24.76		24.92	0.16
								14780	54480				
								26300	75820				
19	3/8/2006	TG076	101	Pariso	2	Bill Reinhardt	2:14 PM	11780	23740	26.00		26.18	0.18
								14400	54440				
								26180	78180				
20	3/8/2006	TG077	102	Pariso	2	Mike Wilson	2:14 PM	11820	21620	24.46		24.64	0.18
								14520	53640				
								26340	75260				
1	3/9/2006	TG078	102	Pariso	2	Steve Cambell	6:56 AM	11540	21860	26.57		26.60	0.03
								14320	57140				
								25860	79000				
2	3/9/2006	TG079	104	Pariso	2	Jimmy Penque	6:56 AM	11580	22360	24.02		24.18	0.16
								14700	51960				
								26280	74320				



**Shenango Steel Mold Site - NYSDEC Site #9-15-172**  
**Waste Material Shipping Record and Log**  
**Site Location: Target Grid Area**

3	3/9/2006	TG080	101	Pariso	2	Bill Reinhardt	7:00 AM	11660	22520	24.32		24.48	0.16
								14380	52160				
								26040	74680				
4	3/9/2006	TG081	171	Pariso	2	Rick Nicosia	7:16 AM	12280	20360	22.68		23.08	0.40
								13540	50820				
								25820	71180				
5	3/9/2006	TG082	102	Pariso	2	Steve Cambell	8:44 AM	11640	22440	23.79		23.80	0.01
								14440	51220				
								26080	73660				
6	3/9/2006	TG083	104	Pariso	2	Jimmy Penque	8:51 AM	11440	21520	23.87		23.90	0.03
								14720	52380				
								26160	73900				
7	3/9/2006	TG084	101	Pariso	2	Bill Reinhardt	8:59 AM	11640	21960	24.68		25.02	0.34
								14340	53380				
								25980	75340				
8	3/9/2006	TG085	171	Pariso	2	Rick Nicosia	9:14 AM	11440	18540	20.83		23.06	2.23
								13600	48160				
								25040	66700				
9	3/9/2006	TG086	102	Pariso	2	Steve Cambell	10:37AM	11440	22780	26.10		26.26	0.16
								14380	55240				
								25820	78020				
10	3/9/2006	TG087	104	Pariso	2	Jimmy Penque	10:51AM	11460	20960	24.48		24.60	0.12
								14640	54100				
								26100	75060				
11	3/9/2006	TG088	101	Pariso	2	Bill Reinhardt	10:57AM	11600	22460	25.21		25.22	0.01
								14320	53880				
								25920	76340				
12	3/9/2006	TG089	171	Pariso	2	Rick Nicosia	11:11 AM	10660	15180	23.08		24.40	1.32
								13600	55240				
								24260	70420				

# Shenango Steel Mold Site - NYSDEC Site #9-15-172

## Waste Material Shipping Record and Log

Site Location: Target Grid Area

13	3/9/2006	TG090	102	Pariso	2	Steve Cambell	12:08 PM	11520	20960	23.71	scale malfunctioned on last weight so we wrote in weight on ticket	23.86	0.15
								14420	52400				
								25940	73360				
14	3/9/2006	TG091	104	Pariso	2	Jimmy Penque	12:10 PM	11500	21500	22.89		22.86	(0.03)
								14700	50480				
								26200	71980				
15	3/9/2006	TG092	101	Pariso	2	Bill Reinhardt	12:33 PM	11480	22000	22.26		22.20	(0.06)
								14320	48320				
								25800	70320				
16	3/9/2006	TG093	171	Pariso	2	Rick Nicosia	12:59 PM	11880	16300	21.88		24.72	2.84
								13620	52960				
								25500	69260				
17	3/9/2006	TG094	102	Pariso	2	Steve Cambell	1:57 AM	11420	21460	24.01		23.96	(0.05)
								14440	52420				
								25860	73880				
18	3/9/2006	TG095	104	Pariso	2	Jimmy Penque	2:00 PM	11420	22740	24.66		24.66	0.00
								14700	52700				
								26120	75440				
19	3/9/2006	TG096	101	Pariso	2	Bill Reinhardt	2:18 PM	11540	22580	23.39		23.44	0.05
								14360	50100				
								25900	72680				
20	3/9/2006	TG097	171	Pariso	2	Rick Nicosia	2:38 PM	11380	18340	21.79		25.74	3.95
								13660	50280				
								25040	68620				
1	3/10/2006	TG098	102	Pariso	2	Steve Cambell	6:54 AM	11700	20740	22.78		22.82	0.04
								14520	51040				
								26220	71780				
2	3/10/2006	TG099	104	Pariso	2	Jimmy Penque	6:55 AM	11760	22660	24.30		24.50	0.20
								14840	52540				
								26600	75200				

**Shenango Steel Mold Site - NYSDEC Site #9-15-172**  
**Waste Material Shipping Record and Log**  
**Site Location: Target Grid Area**

3	3/10/2006	TG100	101	Pariso	2	Bill Reinhardt	7:04 AM	11900	23340	25.16		25.38	0.22
								14460	53340				
								26360	76680				
4	3/10/2006	TG101	102	Pariso	2	Steve Cambell	9:01AM	11880	22300	24.73		25.04	0.31
								14540	53580				
								26420	75880				
5	3/10/2006	TG102	104	Pariso	2	Jimmy Penque	9:11AM	11760	22560	24.56		24.74	0.18
								14780	53100				
								26540	75660				
6	3/10/2006	TG103	101	Pariso	2	Bill Reinhardt	9:04 AM	11860	21000	24.40		24.58	0.18
								14420	54080				
								26280	75080				
7	3/10/2006	TG104	102	Pariso	2	Steve Cambell	10:41am	11700	21540	23.57		23.70	0.13
								14540	51840				
								0	0				
8	3/10/2006	TG105	104	Pariso	2	Jimmy Penque	10:53AM	26240	73380	22.39		22.62	0.23
								11740	21280				
								14800	50040				
9	3/10/2006	TG106	101	Pariso	2	Bill Reinhardt	11:19AM	0	0	23.02		23.26	0.24
								26540	71320				
								11840	20700				
10	3/10/2006	TG107	102	Pariso	2	Steve Cambell	12:30 PM	14460	51640	23.00	estimated weight, wind to high to print tickets	25.16	2.16
								0	0				
								26300	72340				
11	3/10/2006	TG108	104	Pariso	2	Jimmy Penque	12:45PM	0	0	23.00	estimated weight, wind to high to print tickets	24.68	1.68
								0	0				
								0	0				
12	3/10/2006	TG109	102	Pariso	2	Steve Cambell	1:59 PM	0	0	21.00	estimated weight, wind to high to print tickets	25.02	4.02
								0	0				
								0	0				

# Shenango Steel Mold Site - NYSDEC Site #9-15-172

## Waste Material Shipping Record and Log

Site Location: Target Grid Area

13	3/10/2006	TG110	104	Pariso	2	Jimmy Penque	2:05 PM	0	0	23.00	estimated weight, wind to high to print tickets	27.24	4.24
								0	0				
								0	0				
								0	0				
14	3/10/2006	TG111	101	Pariso	2	Bill Reinhardt	2:20 AM	0	0	23.00	estimated weight, wind to high to print tickets	25.08	2.08
								0	0				
								0	0				
								0	0				
1	3/13/2006	TG112	102	Pariso	2	Steve Cambell	6:53 AM	11880	19120	22.56		22.70	0.14
								14680	52560				
								26560	71680				
2	3/13/2006	TG113	104	Pariso	2	Jimmy Penque	6:55 AM	11840	22760	27.49		27.66	0.17
								14920	58980				
								26760	81740				
3	3/13/2006	TG114	101	Pariso	2	Bill Reinhardt	7:31 AM	11900	21040	25.21		25.24	0.03
								14560	55840				
								26460	76880				
4	3/13/2006	TG115	102	Pariso	2	Steve Cambell	8:43 AM	11840	21320	25.91	weight may be wrong, can't read ticket	25.94	0.03
								14600	56940				
								26440	78260				
5	3/13/2006	TG116	104	Pariso	2	Jimmy Penque	8:44 AM	11880	21860	23.23		23.46	0.23
								14900	51380				
								26780	73240				
6	3/13/2006	TG117	101	Pariso	2	Bill Reinhardt	9:27 AM	14500	22180	24.03		24.24	0.21
								11948	52320				
								26448	74500				
7	3/13/2006	TG118	102	Pariso	2	Steve Cambell	10:28 AM	11660	20560	21.43		21.66	0.23
								14560	48520				
								26220	69080				
8	3/13/2006	TG119	104	Pariso	2	Jimmy Penque	10:42 AM	11640	22720	23.19		23.40	0.21
								14960	50260				
								26600	72980				

**Shenango Steel Mold Site - NYSDEC Site #9-15-172**  
**Waste Material Shipping Record and Log**  
**Site Location: Target Grid Area**

9	3/13/2006	TG120	101	Pariso	2	Bill Reinhardt	10:48 AM	11860	22800	23.23		23.40	0.17
								14640	50160				
								26500	72960				
10	3/13/2006	TG121	102	Pariso	2	Steve Cambell	11:59 AM	11760	21640	24.00		24.26	0.26
								14800	52920				
								26560	74560				
11	3/13/2006	TG122	101	Pariso	2	Bill Reinhardt	12:21 PM	11780	22560	24.34		24.34	0.00
								14580	52480				
								26360	75040				
12	3/13/2006	TG123	102	Pariso	2	Steve Cambell	2:01PM	11680	20380	24.18		24.60	0.42
								14860	54520				
								26540	74900				
13	3/13/2006	TG124	101	Pariso	2	Bill Reinhardt	2:09PM	11760	22580	22.17	Bill had 1/2 bucket added to load	23.90	1.73
								14500	48020				
								26260	70600				
14	3/13/2006	TG125	104	Pariso	2	Jimmy Penque	2:26PM	11640	22780	23.47		23.80	0.33
								15080	50880				
								26720	73660				
1	3/14/2006	TG126	102	Pariso	2	Steve Cambell	6:58 AM	12280	20000	22.28		23.20	0.92
								15160	52000				
								27440	72000				
2	3/14/2006	TG127	102	Pariso	2	Steve Cambell	8:49 AM	11780	23860	24.82		24.94	0.12
								14600	52160				
								26380	76020				
3	3/14/2006	TG128	102	Pariso	2	Steve Cambell	10:46 AM	11880	22800	23.26		23.90	0.64
								14660	50260				
								26540	73060				
4	3/14/2006	TG129	102	Pariso	2	Steve Cambell	12:43PM	11740	22780	23.15		23.42	0.27
								14660	49920				
								26400	72700				

**Shenango Steel Mold Site - NYSDEC Site #9-15-172**  
**Waste Material Shipping Record and Log**  
**Site Location: Target Grid Area**

5	3/14/2006	TG130	102	Pariso	2	Steve Cambell	2:08 AM	11700	20360	21.26	Steve had 1 bucket added on way out	23.76	2.50
								14680	48540				
								26380	68900				
1	3/14/2006	TG131	100	Pariso	2	Steve Cambell	6:51 AM	10360	17660	20.92		21.70	0.78
								12980	47520				
								23340	65180				
2	3/15/2006	TG132	104	Pariso	2	Jimmy Penque	7:04 AM	11740	21100	22.70		22.98	0.28
								14700	50740				
								26440	71840				
3	3/15/2006	TG133	101	Pariso	2	Bill Reinhardt	7:21 AM	11840	23240	22.34		22.56	0.22
								14380	47660				
								26220	70900				
4	3/15/2006	TG134	100	Pariso	2	Steve Cambell	8:32 AM	10360	19040	21.69		21.88	0.19
								12820	47520				
								23180	66560				
5	3/15/2006	TG135	104	Pariso	2	Jimmy Penque	8:43 AM	11820	17960	25.65		26.26	0.61
								14740	59900				
								26560	77860				
6	3/15/2006	TG136	101	Pariso	2	Bill Reinhardt	8:58 AM	11820	22260	22.16		22.42	0.26
								14420	48300				
								26240	70560				
7	3/15/2006	TG137	100	Pariso	2	Steve Cambell	10:14AM	10340	16740	21.50		21.68	0.18
								12880	49480				
								23220	66220				
8	3/15/2006	TG138	104	Pariso	2	Jimmy Penque	10:28 AM	11700	20860	21.38		21.50	0.12
								14760	48360				
								26460	69220				
9	3/15/2006	TG139	101	Pariso	2	Bill Reinhardt	10:52 AM	11820	21260	23.10	added another bucket on the way out	23.76	0.66
								14500	48300				
								26320	69560				

# Shenango Steel Mold Site - NYSDEC Site #9-15-172

## Waste Material Shipping Record and Log

Site Location: Target Grid Area

10	3/15/2006	TG140	100	Pariso	2	Steve Cambell	11:53 AM	10260	17860	21.94	too windy to scale accurately; wrote weight on ticket	21.72	(0.22)
								12980	49260				
								23240	67120				
11	3/15/2006	TG141	104	Pariso	2	Jimmy Penque	12:29PM	11680	22300	25.27		25.48	0.21
								14780	54700				
								26460	77000				
12	3/15/2006	TG142	101	Pariso	2	Bill Reinhardt	12:40PM	11780	20880	24.56		24.72	0.16
								14480	54500				
								26260	75380				
13	3/15/2006	TG143	104	Pariso	2	Jimmy Penque	1:48 PM	11640	21700	24.61		24.80	0.19
								14840	54000				
								26480	75700				
14	3/15/2006	TG144	101	Pariso	2	Bill Reinhardt	2:00 PM	11760	21420	24.58		24.80	0.22
								14420	53920				
								26180	75340				
15	3/15/2006	TG145	100	Pariso	2	Steve Cambell	2:36 AM	10280	15820	20.20		20.32	0.12
								13000	47860				
								23280	63680				
1	3/21/2006	TG170	104	Pariso	2	Jimmy Penque	7:00 AM	10600	21060	24.48	TG No. out of sequence	24.60	0.12
								14160	52660				
								24760	73720				
2	3/21/2006	TG172	102	Pariso	2	Mike Wilson	7:07 AM	11200	23740	25.75		27.54	1.79
								13640	52600				
								24840	76340				
3	3/21/2006	TG173	101	Pariso	2	Bill Reinhardt	7:17 AM	11520	22440	25.37		25.70	0.33
								14040	53860				
								25560	76300				
4	3/21/2006	TG174	100	Pariso	2	Steve Cambell	7:23 AM	10220	19300	21.49		21.76	0.27
								12780	46680				
								23000	65980				

# Shenango Steel Mold Site - NYSDEC Site #9-15-172

## Waste Material Shipping Record and Log

Site Location: Target Grid Area

5	3/21/2006	TG175	104	Pariso	2	Jimmy Penque	8:44 AM	11540	22740	24.46		24.82	0.36
								14660	52380				
								26200	75120				
6	3/21/2006	TG176	102	Pariso	2	Mike Wilson	8:47 AM	11940	21920	22.59		22.92	0.33
								14540	49740				
								26480	71660				
7	3/21/2006	TG177	101	Pariso	2	Bill Reinhardt	9:05 AM	10380	22520	22.49		21.28	(1.21)
								13100	45940				
								23480	68460				
8	3/21/2006	TG178	100	Pariso	2	Steve Cambell	9:05 AM	10380	17520	21.76		22.06	0.30
								13100	49480				
								23480	67000				
9	3/21/2006	TG179	104	Pariso	2	Jimmy Penque	10:18 AM	11540	22100	23.56		23.64	0.08
								14780	51340				
								26320	73440				



# Shenango Steel Mold Site - NYSDEC Site #9-15-172

## Waste Material Shipping Record and Log

Site Location: Target Grid Area

10	3/21/2006	TG180	102	Pariso	2	Mike Wilson	10:24 AM	11920	21720	23.03		23.36	0.33
								14700	50960				
								26620	72680				
11	3/21/2006	TG181	101	Pariso	2	Bill Reinhardt	10:34 AM	11820	22760	25.80		25.96	0.16
								14460	55120				
								26280	77880				
12	3/21/2006	TG182	100	Pariso	2	Steve Cambell	10:43 AM	10320	18300	21.75	GOT EXTRA BUCKET	21.72	(0.03)
								13040	48560				
								23360	66860				
13	3/21/2006	TG183	104	Pariso	2	Jimmy Penque	11:52 AM	11580	22320	22.43		22.64	0.21
								14780	48900				
								26360	71220				
14	3/21/2006	TG184	102	Pariso	2	Mike Wilson	11:55 AM	12060	21780	24.17		24.56	0.39
								14720	53340				
								26780	75120				
15	3/21/2006	TG185	101	Pariso	2	Bill Reinhardt	12:10 PM	11740	22120	21.93		22.00	0.07
								14440	47920				
								26180	70040				
16	3/21/2006	TG186	100	Pariso	2	Steve Cambell	12:26 PM	10320	17400	21.56		21.74	0.18
								13040	49080				
								23360	66480				
17	3/21/2006	TG187	102	Pariso	2	Mike Wilson	1:43PM	12100	20480	22.81		23.10	0.29
								14700	51940				
								26800	72420				
18	3/21/2006	TG188	104	Pariso	2	Jimmy Penque	1:53PM	11660	20420	23.34		23.60	0.26
								14840	52760				
								26500	73180				
19	3/21/2006	TG189	101	Pariso	2	Bill Reinhardt	1:48 PM	11740	20580	23.06		23.16	0.10
								14460	51740				
								26200	72320				

**Shenango Steel Mold Site - NYSDEC Site #9-15-172**  
**Waste Material Shipping Record and Log**  
**Site Location: Target Grid Area**

20	3/21/2006	TG190	100	Pariso	2	Steve Cambell	1:54 PM	10240	18780	22.50		22.56	0.06
								12920	49380				
								23160	68160				
1	3/22/2006	TG191	104	Pariso	2	Jimmy Penque		11660	23120	21.74	GOT EXTRA BUCKET	23.74	2.00
								14840	46860				
								26500	69980				
2	3/22/2006	TG192	104	Pariso	2	Jimmy Penque	8:42 AM	11720	21380	23.71		23.96	0.25
								14820	52580				
								26540	73960				
3	3/22/2006	TG193	104	Pariso	2	Jimmy Penque	10:26 AM	11700	19940	21.37		21.56	0.19
								14780	49280				
								26480	69220				
4	3/22/2006	TG194	104	Pariso	2	Jimmy Penque	12:26 PM	11700	23100	25.29		25.54	0.25
								14820	54000				
								26520	77100				
5	3/24/2006	TG195	181	Pariso	2	Brian O'Rourke	7:59 AM	11440	18800	23.50		23.64	0.14
								13980	53620				
								25420	72420				
17	3/27/2006	TG212	218	Pariso	2	Chris Garber	1:25 PM	11260	15180	23.19		24.60	1.41
								12680	55140				
								23940	70320				

**Totals: 3904.16 3997.30 93.14**

# Shenango Steel Mold Site - NYSDEC Site #9-15-172

## Waste Material Shipping Record and Log

Site Location: Infiltration Basin

Load # for Day	Date In:	Project Load No.	Truck No.	Transporter Name:	Profile	Driver Name	Time In	Tare Weight In (lbs.)	Gross Weight Out (lbs)	Site Exit Weight (Tons)	Site Note	Landfill Weight (Tons)	Difference (Tons)
1	3/16/2006	TG146	009	Oneida	3	Mark Migliaccio	6:53 AM	11680	20620	23.32	added another bucket on the way out	23.66	0.34
								14580	47920				
								26260	68540				
2	3/16/2006	TG147	002	Oneida	3	Randy Cera	6:54 AM	12320	18820	22.52		24.15	1.63
								14880	53420				
								27200	72240				
3	3/16/2006	TG148	003	Oneida	3	John Secilia	6:54 AM	12660	20880	23.63		24.81	1.18
								15080	54120				
								27740	75000				
4	3/16/2006	TG149	005	Oneida	3	Bill Krolewicz	6:55 AM	13540	21280	23.85		24.75	0.90
								16080	56040				
								29620	77320				
5	3/16/2006	TG150	009	Oneida	3	Mark Migliaccio	8:50 AM	12000	22040	27.13	too heavy, had a bucket removed on way out	24.68	(2.45)
								14440	58660				
								26440	80700				
6	3/16/2006	TG151	002	Oneida	3	Randy Cera	9:12 AM	11900	20280	23.72		23.94	0.22
								14360	53420				
								26260	73700				
7	3/16/2006	TG152	003	Oneida	3	John Secilia	9:13 AM	11660	20380	22.20	too heavy, had a bucket removed on way out	22.42	0.22
								14300	55880				
								25960	76260				
8	3/16/2006	TG153	005	Oneida	3	Bill Krolewicz	9:20 AM	12720	20880	23.31		23.25	(0.06)
								15500	53960				
								28220	74840				

# Shenango Steel Mold Site - NYSDEC Site #9-15-172

## Waste Material Shipping Record and Log

Site Location: Infiltration Basin

9	3/16/2006	TG154	009	Oneida	3	Mark Migliaccio	10:40 AM	11900	20960	23.49		23.55	0.06
								14340	52260				
								26240	73220				
10	3/16/2006	TG155	002	Oneida	3	Randy Cera	10:53 AM	11740	19740	22.93		23.10	0.17
								14360	52220				
								26100	71960				
11	3/16/2006	TG156	003	Oneida	3	John Secilia	11:29 AM	11660	20820	25.02	too heavy, had a bucket removed on way out	22.52	(2.50)
								14280	55160				
								25940	75980				
12	3/16/2006	TG157	005	Oneida	3	Bill Krolewicz	11:30 AM	12680	20800	23.97		23.90	(0.07)
								15480	55300				
								28160	76100				
13	3/16/2006	TG158	009	Oneida	3	Mark Migliaccio	12:26 PM	11880	21600	25.62	too heavy, had a bucket removed on way out	23.88	(1.74)
								14300	55820				
								26180	77420				
14	3/16/2006	TG159	002	Oneida	3	Randy Cera	12:30 PM	11740	18720	22.72		23.18	0.46
								14280	52740				
								26020	71460				
15	3/16/2006	TG160	003	Oneida	3	John Secilia	1:20 PM	11660	20120	25.31		25.96	0.65
								14240	56400				
								25900	76520				
16	3/16/2006	TG161	005	Oneida	3	Bill Krolewicz	1:31 PM	12580	20020	23.48		23.28	(0.20)
								15440	54960				
								28020	74980				
17	3/16/2006	TG162	009	Oneida	3	Mark Migliaccio	2:02 PM	11760	20620	24.54		25.26	0.72
								14320	54540				
								26080	75160				

# Shenango Steel Mold Site - NYSDEC Site #9-15-172

## Waste Material Shipping Record and Log

Site Location: Infiltration Basin

18	3/16/2006	TG163	002	Oneida	3	Randy Cera	2:17 PM	11720	20740	24.69		24.73	0.04
								14320	54680				
								26040	75420				
19	3/16/2006	TG164	003	Oneida	3	John Secilia	3:08 PM	11600	20520	24.92		24.87	(0.05)
								14200	55120				
								25800	75640				
20	3/16/2006	TG165	005	Oneida	3	Bill Krolewicz	3:19 PM	12640	21100	23.61		23.46	(0.15)
								15480	54240				
								28120	75340				
21	3/16/2006	TG166	002	Oneida	3	Randy Cera	3:45 PM	11560	18680	22.64		23.60	0.96
								14340	52500				
								25900	71180				
1	3/17/2006	TG167	005	Oneida	3	Salvatore Persico	7:09 AM	11840	18700	21.00		22.46	1.46
								15180	43260				
								27020	61960				
2	3/17/2006	TG168	005	Oneida	3	Salvatore Persico	9:27 AM	13060	18960	19.70		25.03	5.33
								16140	49640				
								29200	68600				
3	3/17/2006	TG169	005	Oneida	3	Salvatore Persico	11:20 AM	13520	19780	21.95		21.94	(0.01)
								16700	54340				
								30220	74120				
25	3/17/2006	TG171	005	Oneida	3	Salvatore Persico	1:30 PM	13640	20880	22.61	TG No. out of sequence	25.17	2.56
								16900	54880				
								30540	75760				
1	3/27/2006	TG196	005	Oneida	3	Salvatore Persico	7:00 AM	11800	19060	22.32		22.43	0.11
								14280	51660				
								26080	70720				

# Shenango Steel Mold Site - NYSDEC Site #9-15-172

## Waste Material Shipping Record and Log

Site Location: Infiltration Basin

2	3/27/2006	TG197	003	Oneida	3	Jeffrey Beebe	7:03 AM	11540	18780	21.51		21.69	0.18
								14220	50000				
								25760	68780				
3	3/27/2006	TG198	008	Oneida	3	Gary Fumiola	7:18 AM	13760	19220	20.28		21.74	1.46
								16500	51600				
								30260	70820				
4	3/27/2006	TG199	002	Oneida	3	Randy Cera	7:50 AM	11520	18260	23.23		24.27	1.04
								14200	53920				
								25720	72180				
5	3/27/2006	TG200	005	Oneida	3	Salvatore Persico	8:56 AM	11820	19320	23.54		23.84	0.30
								14180	53760				
								26000	73080				
6	3/27/2006	TG201	003	Oneida	3	Jeffrey Beebe	8:57 AM	11400	19100	23.17		23.25	0.08
								14100	52740				
								25500	71840				
7	3/27/2006	TG202	008	Oneida	3	Gary Fumiola	9:11 AM	13740	19140	22.52		25.10	2.58
								16520	56160				
								30260	75300				
8	3/27/2006	TG203	002	Oneida	3	Randy Cera	9:45 AM	11480	19000	23.77		24.44	0.67
								14180	54200				
								25660	73200				
9	3/27/2006	TG204	005	Oneida	3	Salvatore Persico	11:02 M	11760	19500	24.37		24.42	0.05
								14180	55180				
								25940	74680				
10	3/27/2006	TG205	008	Oneida	3	Gary Fumiola	11:03 AM	12240	20700	23.74		23.98	0.24
								14760	53780				
								27000	74480				

**Shenango Steel Mold Site - NYSDEC Site #9-15-172**  
**Waste Material Shipping Record and Log**  
**Site Location: Infiltration Basin**

11	3/27/2006	TG206	003	Oneida	3	Jeffrey Beebe	11:06 AM	11740	19300	23.42		23.30	(0.12)
								14200	53480				
								25940	72780				
12	3/27/2006	TG207	002	Oneida	3	Randy Cera	11:14 AM	11520	19080	24.94	had bucket taken off on way out	23.68	(1.26)
								14140	56460				
								25660	75540				
13	3/27/2006	TG208	005	Oneida	3	Salvatore Persico	12:43 PM	11760	20580	25.14		25.21	0.07
								14200	55660				
								25960	76240				
14	3/27/2006	TG209	008	Oneida	3	Gary Fumiola	12:46 PM	12220	20800	25.23		25.38	0.15
								14740	56620				
								26960	77420				
15	3/27/2006	TG210	003	Oneida	3	Jeffrey Beebe	12:46 PM	11700	19880	23.89		23.87	(0.02)
								14160	53760				
								25860	73640				
16	3/27/2006	TG211	002	Oneida	3	Randy Cera	1:09 PM	11500	18100	23.72		24.59	0.87
								14160	55000				
								25660	73100				
Totals:								962.67			978.74	16.07	

**Shenango Steel Mold Site - NYSDEC Site # 9-15-172**  
**Waste Material Shipping and Log**  
**Site Location: LNAPL/TGA**

Load # for Day	Date In:	Project Load No.	Truck No.	Transporter Name:	Profile	Driver Name	Time In	Tare Weight In (lbs.)	Gross Weight Out (lbs)	Site Exit Weight (Tons)	Site Note	Landfill Weight (Tons)	Difference (Tons)
1	3/22/2006	Concrete 1	104	Pariso	4	Jimmy Penque	1:53 AM	11760	15440	11.76		11.76	0.00
								14620	34460				
								26380	49900				



**N**

## **Field Density and Compaction Test Results**

**Horizon Environmental Services**

**Transmittal**

To: Mr. Michael Steffan  
Ecology and Environment  
Buffalo Corporate Center  
368 Pleasant View Drive  
Lancaster, NY 14086

May 12, 2006  
Shenango Steel Project  
NYSDEC Contract No. D005660  
Transmittal No. 1  
Project Closeout  
Substantial Completion Punchlist  
#11 Compaction Data

Please see the following and above referenced submittal.

Cc: Greg Jones, Ecology and Environment  
Jeff Kohler, Ecology and Environment  
David Chiusano, NYSDEC



Contract  
Drilling  
and  
Testing

**BUFFALO OFFICE**  
5167 South Park Avenue  
Hamburg, NY 14075  
Phone: (716) 649-8110  
Fax: (716) 649-8051

### INSPECTOR'S DAILY REPORT

Date: 03-17-06

Project: Shenango Steel

Client: Horizon Environmental

Contractor: Horizon Environmental

Project No.: BT-06-046

Report No.: 1

S	M	T	W	TH	F	SA		
Sunny X		Clear X		Overcast			Rain	Snow
to 32		32 to 50 X		50 to 70			70 to 85	85 +
Still		Moderate X		High				

#### OBSERVATIONS:

This SJB Services technician was present at the above referenced site to perform materials testing. The following was noted:

In place density tests were performed for the contaminated area of the Shenango Steel site to ensure 85% compaction. Compaction was achieved on a Silty sand with gravel material from Lafarge. A walk behind rolling drum was used for compaction of the material.

The contractor was notified of the results.

Refer to the attached in place density test for results.

Technician: Tim Ifkovich

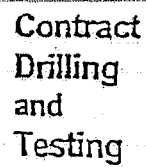
Time On Site: ½ - Hour

Respectfully Submitted,  
SJB SERVICES, INC.

Albany, NY  
(518) 899-7491

Cortland, NY  
(607) 758-7182

Rochester, NY  
(585) 359-2730



**BUFFALO OFFICE**  
5167 South Park Avenue  
Hamburg, NY 14075  
Phone: (716) 649-8110  
Fax: (716) 649-8051

PROJECT:	SHENANGO STEEL	LOCATION:	BUFFALO, NEW YORK
CLIENT:	HORIZON ENVIRONMENTAL	REPORT NO.:	1
BLDG./AREA:		PROJECT NO.:	BT-06-046
CONTRACTOR:	HORIZON ENVIRONMENTAL	DATE:	03-17-06

REMARKS:  
NUCLEAR METHOD USED - DIRECT TRANSMISSION

85% COMPACTION REQUIRED

TECHNICIAN: T. IFKOVICH

Rochester, NY  
(585) 359-2730



Contract  
Drilling  
and  
Testing

**BUFFALO OFFICE**  
5167 South Park Avenue  
Hamburg, NY 14075  
Phone: (716) 649-8110  
Fax: (716) 649-8051

### INSPECTOR'S DAILY REPORT

Project: Shenango Steel  
Client: Horizon Environmental  
Contractor: Horizon Environmental  
Project No.: BT-06-046  
Report No.: 1

Date: 03-17-06

S	M	T	W	TH	F	SA	
Sunny X		Clear X		Overcast		Rain	Snow
to 32		32 to 50 X		50 to 70		70 to 85	85 +
Still		Moderate X		High			

#### OBSERVATIONS:

This SJB Services technician was present at the above referenced site to perform materials testing. The following was noted:

In place density tests were performed for the contaminated area of the Shenango Steel site to ensure 85% compaction. Compaction was achieved on a Silty sand with gravel material from Lafarge. A walk behind rolling drum was used for compaction of the material.

The contractor was notified of the results.

Refer to the attached in place density test for results.

Technician: Tim Ifkovich

Time On Site: 1/2 - Hour

Respectfully Submitted,  
SJB SERVICES, INC.

Albany, NY  
(518) 899-7491

Cortland, NY  
(607) 758-7182

Rochester, NY  
(585) 359-2730

## Contract Drilling and Testing

**BUFFALO OFFICE**  
5167 South Park Avenue  
Hamburg, NY 14075  
Phone: (716) 649-8110  
Fax: (716) 649-8051

# FIELD IN-PLACE DENSITY TEST REPORT (NUCLEAR METHOD)

PROJECT:	SHENANGO STEEL	LOCATION:	BUFFALO, NEW YORK
CLIENT:	HORIZON ENVIRONMENTAL	REPORT NO.:	1
BLDG./AREA:		PROJECT NO.:	BT-06-046
CONTRACTOR:	HORIZON ENVIRONMENTAL	DATE:	03-17-06

[illegible]

## REMARKS:

REMARKS:  
NUCLEAR METHOD USED - DIRECT TRANSMISSION

85% COMPACTION REQUIRED

TECHNICIAN: T. IFKOVICH

Respectfully Submitted,  
SJB SERVICES, INC.

Albany, NY  
(518) 899-7491

Cortland, NY  
(607) 758-7182

Rochester, NY  
(585) 359-2730



Contract  
Drilling  
and  
Testing

**BUFFALO OFFICE**  
5167 South Park Avenue  
Hamburg, NY 14075  
Phone: (716) 649-8110  
Fax: (716) 649-8051

### INSPECTOR'S DAILY REPORT

Date: 03-27-06

Project: Shenango Steel  
Client: Horizon Environmental  
Contractor: Horizon Environmental  
Project No.: BT-06-046  
Report No.: 2

S	M	T	W	TH	F	SA	
	X						
Sunny X		Clear X		Overcast		Rain	Snow
to 32 X		32 to 50		50 to 70		70 to 85	85 +
Still X		Moderate		High			

#### OBSERVATIONS:

This SJB Services technician was present at the above referenced site to complete compaction testing. The following was noted:

In place density tests were performed in the tight grid area. All tests reached the required compaction.

Refer to the attached in place density test for results.

Technician: Scott Szabo

Time On Site: 1 - Hour

Respectfully Submitted,  
SJB SERVICES, INC.

Albany, NY  
(518) 899-7491

Cortland, NY  
(607) 758-7182

Rochester, NY  
(585) 359-2730

## Contract Drilling and Testing

**BUFFALO OFFICE**  
5167 South Park Avenue  
Hamburg, NY 14075  
Phone: (716) 649-8110  
Fax: (716) 649-8051

# FIELD IN-PLACE DENSITY TEST REPORT (NUCLEAR METHOD)

PROJECT:	SHENANGO STEEL	LOCATION:	BUFFALO, NEW YORK
CLIENT:	HORIZON ENVIRONMENTAL	REPORT NO.:	2
BLDG./AREA:		PROJECT NO.:	BT-06-046
CONTRACTOR:	GLYNN	DATE:	03-27-06

[illegible]

REMARKS:

REMARKS:  
NUCLEAR METHOD USED - DIRECT TRANSMISSION

Respectfully Submitted,  
SJB SERVICES, INC.

TECHNICIAN:

S. SZABO

Albany, NY  
(518) 899-7491

Cortland, NY  
(607) 758-7182

Rochester, NY  
(585) 359-2730





Contract  
Drilling  
and  
Testing

**BUFFALO OFFICE**  
5167 South Park Avenue  
Hamburg, NY 14075  
Phone: (716) 649-8110  
Fax: (716) 649-8051

### INSPECTOR'S DAILY REPORT

Date: 03-27-06

Project: Shenango Steel

Client: Horizon Environmental

Contractor: Horizon Environmental

Project No.: BT-06-046

Report No.: 2

S	M	T	W	TH	F	SA
Sunny X	X	Clear X		Overcast		Rain
to 32 X		32 to 50		50 to 70		70 to 85
Still X		Moderate		High		85 +

#### OBSERVATIONS:

This SJB Services technician was present at the above referenced site to complete compaction testing. The following was noted:

In place density tests were performed in the tight grid area. All tests reached the required compaction.

Refer to the attached in place density test for results.

Technician: Scott Szabo

Time On Site: 1 - Hour

Respectfully Submitted,  
SJB SERVICES, INC.

Albany, NY  
(518) 899-7491

Cortland, NY  
(607) 758-7182

Rochester, NY  
(585) 359-2730

Rochester, NY  
(585) 359-2730



# EEEEPC Daily Reports with Photographs

# DAILY OBSERVATION REPORT

Report No.: 172-001

E&E Project File: NV28.01

Date: Monday, January 30, 2006

## NYSDEC

Temperature: (F) AM: 45 PM: 47

## Division of Environmental Remediation

Wind Direction: W 15

## Shenango Steel Mold NYSDEC - Contract # D005660

Weather: AM: Partly Cloudy

PM: Sunny

Buffalo, New York

Arrive at site 7:45 am

Leave site: 4:00 pm

### HEALTH & SAFETY:

Are there any changes to the Health & Safety Plan?  
(If yes, list the deviation under items for concern)

Yes ( )

No (X)

Are monitoring results at acceptable  
levels?

--Soil

Yes ( ) n/a (X)

\* No ( )

--Water

Yes ( ) n/a (X)

\* No ( )

--Air

Yes ( ) n/a (X)

\* No ( )

\* If No provide comments

### DESCRIPTION OF DAILY WORK PERFORMED:

AM: GC offloading heavy equipment on approach road at Fuhrmann Blvd due to short radius at site entry. The south edge of the turn in was enlarged to allow long beds to move to site. The approach road from Fuhrmann was cleaned of any casual debris due to our activities. Locations of existing manholes were verified and the crossroad to the trailer site cleared of trash and debris. A temporary concrete slab was placed over the north manhole and then covered with 10" of stone to avoid collapsing the temporary tire lid into the hole. The other MH locations were flagged to prevent inadvertent damage to vehicles or the structure. Portable toilet, office trailer and storage containers were moved on site and set up at the approximate locations indicated on the contractor's previously submitted site plan. Silt fencing, wood stakes, orange plastic construction fencing and Mirafi 180N geofabric rolls for the infiltration basin were also delivered.

PM: Sited Infiltration Basin after digging 2 test pits to verify best percolation location. After observation with GC and D Locey of Region 9 DEC the northernmost location was selected. Depth to water table was approximately 9'. The contractor was given the OK to proceed with construction of the basin. Spotted power generator in proximity of office complex. No cables were shipped with the unit-Ferguson Electric was to return to the site on 1/31/06 to complete the tie in and energize the offices. GC took confirmatory soil samples at the tight grid area to verify preconstruction contaminant levels and better define the locations of elevated contaminant levels within the TGA.

No Daily Photos attached

**CONT**

### RACTOR/SUBCONTRACTOR PERSONNEL AND EQUIPMENT

Personnel: (HES) – Brian Spangler (PM), Scott Clary (SO), Doug Cummins and Ed Pooters

Subcontractors: Wendel Duscherer Surveyors (2)

Ferguson Electric (1)

# DAILY OBSERVATION REPORT

Report No.: 172-001

E&E Project File: NV28.01

Date: Monday, January 30, 2006

Equipment – (1) Deere 120C excavator w/breaker (1) JCB JS 330L excavator (1) JCB 4x4 backhoe/loader  
Temporary Generator

## VISITORS TO SITE

Dave Locey Region 9 NYSDEC

## PROJECT SCHEDULE ISSUES:

None

## PROJECT BUDGET ISSUES:

None

## ITEMS OF CONCERN:

None

## COMMENTS:

No internet / electrical /heat available at site. Contractor anticipates service within next 48 hours. Cell phone was available for RE use if desired.

## PROJECT OVERTIME INFORMATION:

## ATTACHMENTS:

Sketch Attached: Yes ( ) No (X)

Photos Taken: Yes ( ) No (x)

## **SITE**

**REPRESENTATIVE:** Jeff Kohler, Site Representative, E&E Engineering, P. C.

Name: (signature)



cc:

D. Chiusano - Project Manager - NYSDEC  
M. Steffan – E & E Buffalo  
D. Miller – E & E Buffalo

# DAILY OBSERVATION REPORT

Report No.: 172-002

E&E Project File: NV28.01

Date: Tuesday, January 31, 2006

## NYSDEC

### Division of Environmental Remediation

### Shenango Steel Mold NYSDEC - Contract # D005660

Buffalo, New York

Temperature: (F) AM: 40 PM: 33

Wind Direction: W 13

Light snow

Weather: AM: Partly Cloudy

PM: Overcast

Arrive at site 7:45 am

Leave site: 1:00 pm

### HEALTH & SAFETY:

Are there any changes to the Health & Safety Plan?  
(If yes, list the deviation under items for concern)

Yes ( )

No (X)

Are monitoring results at acceptable  
levels?

--Soil

Yes (x) n/a ( )

\* No ( )

--Water

Yes ( ) n/a (X)

\* No ( )

--Air

Yes (x) n/a (X)

\* No ( )

\* If No provide comments

### DESCRIPTION OF DAILY WORK PERFORMED:

AM: Paved access roadway to site was photographed for record purposes. See photos 1 and 2. The existing site road was cleaned of excessive debris. See photo 3. Test pits dug previously were photographed for record purposes showing water level in each. See photos 4, 5, 6 and 7. Preconstruction sampling at final Infiltration basin location performed prior to installation of stone or geotextile. Requirements for installation were reviewed with GC. Installation guidelines for the geotextile from the manufacturer will be utilized for placement. Test pit made in area not selected for Infiltration Basin was backfilled to grade. GC was preparing a pad and truck path for the tare scale from onsite materials. Refer to photo 8.

PM: GC continued construction of truck path using on site materials (refractory brick and slag) and excavated Infiltration Basin. Left site and returned to office due to freezing temps; no power or heat at the site office to complete reports, download photos or email capability to transmit same.

Daily Photos attached

### CONTRACTOR/SUBCONTRACTOR PERSONNEL AND EQUIPMENT

Personnel: (HES) – Brian Spangler (PM), Scott Clary (SO), Doug Cummins and Ed Pooters

Subcontractors: Wendel Duscherer Surveyors (2)

Ferguson Electric (1)

Equipment – (1) Deere 120C excavator w/breaker (1) JCB JS 330L excavator (1) JCB 4x4 backhoe/loader

Temporary Generator

# DAILY OBSERVATION REPORT

Report No.: 172-002

E&E Project File: NV28.01

Date: Tuesday, January 31, 2006

## VISITORS TO SITE

None

## PROJECT SCHEDULE ISSUES:

None

## PROJECT BUDGET ISSUES:

None

## ITEMS OF CONCERN:

None

## COMMENTS:

No internet or electrical available at site. Contractor anticipates service within next 24 hours. Cell phone available for RE use if desired.

## PROJECT OVERTIME INFORMATION:

## ATTACHMENTS:

Sketch Attached: Yes () No ()

Photos Taken: Yes (x) No (x) (Photos – 001-008)

## **SITE**

### **REPRESENTATIVE:**

**Jeff Kohler, Site Representative, E&E Engineering, P. C.**

Name: (signature)



cc:

'D. Chiusano - Project Manager - NYSDEC  
M. Steffan – E & E Buffalo  
D. Miller – E & E Buffalo

# DAILY OBSERVATION REPORT

Report No.: 172-002

E&E Project File: NV28.01

Date: Tuesday, January 31, 2006





# DAILY OBSERVATION REPORT

Report No.: 172-003

E&E Project File: NV28.03

Date: Wednesday, February 1, 2006

## NYSDEC

Temperature: (F) AM:33 PM: 36

### Division of Environmental Remediation

Wind Direction: SW7

### Shenango Steel Mold NYSDEC - Contract # D005660

Weather: AM: overcast

PM: sunny

Buffalo, New York

Arrive at site 7:45 A

Leave site: 4:30 P

### HEALTH & SAFETY:

Are there any changes to the Health & Safety Plan?  
(If yes, list the deviation under items for concern)

Yes ( )

No (x)

Are monitoring results at acceptable levels?

--Soil

Yes (x) n/a ( )

\* No ( )

--Water

Yes (x) n/a ( )

\* No ( )

--Air

Yes (x) n/a ( )

\* No ( )

\* If No provide comments

### DESCRIPTION OF DAILY WORK PERFORMED:

AM:

Checked paved haul out access road off Fuhrmann for excessive mud or debris which was not noted. Excavation of the infiltration basin 75% completed. Offloaded jersey barriers proximity of both TGA and LNAPL containment areas in preparation for excavation operations. GC filling potholes in the perimeter haul road along south side of site with on-site material. Surveyors on site to provide additional control and demarcation. Debris removal at North Gate/asphalt pad in progress. Ferguson Electric on site to power up offices. Root Neal on site to install truck scale.

PM:

Trailers energized. Heating systems operational. Email and internet systems operational. Additional 500 yd<sup>2</sup> Mirafi 180N delivered. GC taping limits of TGA for future reference once excavation activities commence. Excavation of containment basin 95% complete. Reviewed Mirafi placement instructions with GC. Control hub (elevation) established by surveyor for future use at LNAPL area.

Daily Photos attached

### CONTRACTOR/SUBCONTRACTOR PERSONNEL AND EQUIPMENT

Personnel: (HES) – Brian Spangler (PM), Scott Clary (SO), Doug Cummins (Eq Op), Ed Pooters (Eq Op)

Subcontractors: Wendel Duscherer Surveyors (1) Ferguson Electric (1)

# DAILY OBSERVATION REPORT

Report No.: 172-003

E&E Project File: NV28.03

Date: Wednesday, February 1, 2006

## Equipment:

- (1) Deere 120C excavator w/breaker.....- op time – 7-12 (x) 12-4 (x)
- (1) JCB JS 330L excavator.....- op time – 7-12 (x) 12-4 (x)
- (1) JCB 4x4 backhoe/loader.....- op time – 7-12 (x) 12-4 ( )
- (1) Whisper Power MQ AC/DC Generator - op time – 7-12 (x) 12-4 (x)

## VISITORS TO SITE

(2) Erie County Water District Operators-casual conversation as they were in the area and noted our equipment-mentioned the groundwater issues with previous phases at the site.

## PROJECT SCHEDULE ISSUES:

None

## PROJECT BUDGET ISSUES:

None

## ITEMS OF CONCERN:

GC to install silt fencing downgrade of the spoil piles and sample same for pre-construction analysis.

## COMMENTS:

Potential for groundwater intrusion during excavation at the LNAPL area was discussed with PM and GC. It was decided to perform sampling of water at the LNAPL test pit and the vault adjacent to the containment area to develop waste profile information for further evaluation. RFI 1 to be initiated by RE requesting GC plan of action in the event groundwater is encountered.

Also cautioned GC and equip operators to stay aware when moving heavy equipment in demolished areas due to possible unseen conditions below grade. Presumption is that area is safe for operations, but caution where former foundry and gallery foundations with suspended slabs may still be present is advised.

## PROJECT OVERTIME INFORMATION:

JJ Kohler (4)

## ATTACHMENTS:

Sketch Attached: Yes ( ) No (x)

Photos Taken: Yes (x) No ( )

## **SITE**

### **REPRESENTATIVE:**

**Jeff Kohler Site Representative**  
**E&E Engineering, P. C.**

Name: (signature)



cc: file

D. Chiusano - Project Manager - NYSDEC  
M. Steffan – E & E Buffalo  
D. Miller – E & E Buffalo

# DAILY OBSERVATION REPORT

Report No.: 172-003

E&E Project File: NV28.03

Date: Wednesday, February 1, 2006



Figure 1 - Infiltration Basin AM-Looking North



Figure 2 - Infiltration Basin AM – Looking North



Figure 3 - Infiltration Basin AM – Looking North



# DAILY OBSERVATION REPORT

Report No.: 172-003

E&E Project File: NV28.03

Date: Wednesday, February 1, 2006



Figure 4 – Truck Scale AM – Looking Northwest



Looking South

Figure 5 - Offloading Jersey Barriers @ TGA –



Figure 6 - Infiltration Basin PM – Looking North

# DAILY OBSERVATION REPORT

Report No.: 172-003

E&E Project File: NV28.03

Date: Wednesday, February 1, 2006



Figure 7 - Infiltration Basin PM – Looking North



Figure 8 - Infiltration Basin PM – Looking North



Figure 9 - Truck Scale PM – Looking SouthEast



# DAILY OBSERVATION REPORT

Report No.: 172-003

E&E Project File: NV28.03

Date: Wednesday, February 1, 2006



**Figure 10 - Truck Scale PM – Looking SouthEast**

# DAILY OBSERVATION REPORT

Report No.: 172-004

E&E Project File: NV28.01

Date: Thursday, February 2, 2006

## NYSDEC

### Division of Environmental Remediation

### Shenango Steel Mold NYSDEC - Contract # D005660

Buffalo, New York

Temperature: (F) AM: 38 PM: 33

Wind Direction: AM S8  
PM VRB 5

Weather: AM: Ptly Cloudy RH 67  
PM: Sunny RH 53

Arrive at site 7:15A

Leave site: 4:30P

### HEALTH & SAFETY:

Are there any changes to the Health & Safety Plan?  
(If yes, list the deviation under items for concern)

Yes ( ) No (x)

Are monitoring results at acceptable  
levels?

--Soil	Yes (x) n/a ( )	* No ( )
--Water	Yes (x) n/a ( )	* No ( )
--Air	Yes (x) n/a ( )	* No ( )

\* If No provide comments

### DESCRIPTION OF DAILY WORK PERFORMED:

AM: GC moving and installing geotextile to Infiltration Basin. Gate posts installed at south entrance to site, in proximity to the asphalt pad. Wendel on site to complete control and stakeout. Surveyor left site at 10:35 AM. SJB on site to begin removal of well casings. 3 completed by 10:30 AM. Sand placement at the north end of the basin is in progress by 11:00 AM.

PM: Pariso continues to run sand loads onto the site. GC placing the sand layer as deliveries permit. Refer to photos for progress. Main Gate installation proceeding with gate leaves being bolted to posts. SJB pulling final well casings outside main gate area. GC moved JS 330 L excavator next to TGA and is breaking concrete adjacent to the west boundary of the exclusion zone. Silt Fence has been installed along the downgrade (west) side of the Infiltration spoil stockpiles in anticipation of heavy rain event after dark tonight.

Copies of Chain of Custody sheets for Characterization Samples TG-0-01 and TG-0-02 (1/30/06), LN-01' LN-02 LN-03 (1/31/06) and LN-Sump Water, LN-vault and TG-PCB Character submitted to EEEPC.

See attached pdf document for further information.

Daily Photos attached

### CONTRACTOR/SUBCONTRACTOR PERSONNEL AND EQUIPMENT

Personnel: (HES) – Brian Spangler (PM), Scott Clary (SO), Doug Klonsinski and Ed Pooters (Equip Operators)

Subcontractors: Wendel Duscherer Surveyors (1), SJB Soils Investigations (2)

# DAILY OBSERVATION REPORT

Report No.: 172-004

E&E Project File: NV28.01

Date: Thursday, February 2, 2006

## Equipment:

- (1) Deere 120C excavator w/breaker.....- op time – 7-12 (x) 12-4 (x)
- (1) JCB JS 330L excavator.....- op time – 7-12 (x) 12-4 (x)
- (1) JCB 4x4 backhoe/loader.....- op time – 7-12 (x) 12-4 (x)
- (1) Whisper Power MQ AC/DC Generator....- op time – 7-12 (x) 12-4 (x)
- (1) Well drilling Rig (SJB).....- op time – 7-12 (x) 12-4 (x)
- 1) Deere 624H Front End Loader.....- op time – 7-12 (x) 12-4 (x)

## VISITORS TO SITE

Pariso Trucking reps (2) to coordinate sand/stone delivery for Infiltration Basin  
United Rentals (1) delivering rental equipment (Deere 624H)

## PROJECT SCHEDULE ISSUES:

None

## PROJECT BUDGET ISSUES:

GC submitted draft CAP No 1 for my comment  
See attached pdf document for information

## ITEMS OF CONCERN:

.

## COMMENTS:

Cautioned GC regarding Exclusion Zones. The equipment is either in the zone or out. Once equipment is in the zone, it must be decontaminated prior to moving outside the TGA or LNAPL areas. I am not directing them; I simply asked them to make a decision as to status since they were breaking concrete in proximity of the west boundary of the TGA.

Refer to Fig 11

.

## PROJECT OVERTIME INFORMATION:

JJ Kohler (2)

## ATTACHMENTS:

Sketch Attached: Yes ( ) No (x)

Photos Taken: Yes (x) No ( )

**SITE  
REPRESENTATIVE:**

**Jeff Kohler Site Representative  
E&E Engineering, P. C.**

Name: (signature)



cc: file

D. Chiusano - Project Manager - NYSDEC  
M. Steffan – E & E Buffalo  
D. Miller – E & E Buffalo



# DAILY OBSERVATION REPORT

Report No.: 172-004

E&E Project File: NV28.01

Date: Thursday, February 2, 2006



Figure 1 - Infiltration Basin prep 1



Figure 2 - Infiltration Basin prep 2



Figure 3 – Silt Fence

# DAILY OBSERVATION REPORT

Report No.: 172-004

E&E Project File: NV28.01

Date: Thursday, February 2, 2006



Figure 4 – Geofabric Install 1



Figure 5 – Geofabric Install 2



Figure 6 - Infiltration Basin-Sand Layer



# DAILY OBSERVATION REPORT

Report No.: 172-004

E&E Project File: NV28.01

Date: Thursday, February 2, 2006



Figure 7 – MW removal 1



Figure 8 – MW removal 2



Figure 9 - Infiltration Basin Sand Layer 2

# DAILY OBSERVATION REPORT

Report No.: 172-004

E&E Project File: NV28.01

Date: Thursday, February 2, 2006



Figure 20 – Deere 624H



Figure 31 – TGA concrete demolition

# DAILY OBSERVATION REPORT

Report No.: 172-005

E&E Project File: NV28.01

Date: Friday, February 3, 2006

## NYSDEC

### Division of Environmental Remediation

### Shenango Steel Mold NYSDEC - Contract # D005660

Buffalo, New York

Temperature: (F) AM: 43 PM: 37

Wind Direction: AM: SW 13 G 25  
PM: SW 30 G 38

Weather: AM: LtRain/Fog RH 87  
PM: Cloudy RH 93

Arrive at site 7:35 AM

Leave site: 4:50 PM

### HEALTH & SAFETY:

Are there any changes to the Health & Safety Plan?  
(If yes, list the deviation under items for concern)

Yes ( ) No (x)

Are monitoring results at acceptable  
levels?

--Soil	Yes (x) n/a ( )	* No ( )
--Water	Yes (x) n/a ( )	* No ( )
--Air	Yes (x) n/a ( )	* No ( )

\* If No provide comments

### DESCRIPTION OF DAILY WORK PERFORMED:

AM: GC placing stone layer in Infiltration Basin from west to east. Also placing fine slag over broken brick at truck scale approach path.

PM: GC continued stone placement in Infiltration Basin as deliveries permit. Truck Scale reprogrammed. Scale readout operational. Debris piles pushed away from vicinity of LNAPL and Infiltration Basin areas. GC erected construction fencing around entry points to the Infiltration Basin. Locked and barricaded Main Gate Entry points

Daily Photos attached

### CONTRACTOR/SUBCONTRACTOR PERSONNEL AND EQUIPMENT

Personnel: (HES) – Brian Spangler (PM), Scott Clary (SO), Doug Klonsinski and Ed Pooters (Equip Operators)  
Subcontractors: Pariso Trucking, Root Neal (truck scale), United Rentals (equipment)

### VISITORS TO SITE:

Mr. Dave Locey - Region 9 - NYSDEC

# DAILY OBSERVATION REPORT

Report No.: 172-005

E&E Project File: NV28.01

Date: Friday, February 3, 2006

## Equipment:

- (1) Deere 120C excavator w/breaker.....- op time – 7-12 (x) 12-4 ( )
- (1) JCB JS 330L excavator.....- op time – 7-12 (x) 12-4 (x)
- (1) Whisper Power MQ AC/DC Generator.....- op time – 7-12 (x) 12-4 (x)
- (1) Deere 624H Front End Loader.....- op time – 7-12 (x) 12-4 (x)

Note: JCB 4x4 backhoe/loader removed from site

## PROJECT SCHEDULE ISSUES:

None

## PROJECT BUDGET ISSUES:

Reviewed draft CAP with Mssrs. Clary, Spangler and Steffan. We need to clarify sampling paid under the terms of the contract for the GC. Also discussed basis of payment for Health and Safety. Day 1 is not the same as Contract Duration Day 1. EEEPC is tracking Site Services for record purposes.

## ITEMS OF CONCERN:

Stone intended for speed bump at entrance to site not to be used by GC elsewhere. See RFI 001 (attached)  
Based on level of completion at the end of today, no construction fencing will be required around the Infiltration Basin  
Recommended signage at the main gate to discourage trespassing  
Requested GC to flag proposed backfill stockpile locations

## COMMENTS:

Reviewed weekend security procedures with Horizon. There will be 24 hr. surveillance after 5 PM tonight. Main gate is locked and barricades at entry points around the Infiltration Basin (fencing) are in place to discourage intrusion to the area. Site is still open along the ship canal and from new roadway west of the property line. This condition is clearly beyond the General Contractor's control.

## PROJECT OVERTIME INFORMATION:

## ATTACHMENTS:

Sketch Attached: Yes ( ) No (x)  
Photos Taken: Yes (x) No ( )  
RFI 001- Proposed GW Procedure at LNAPL Area  
RFI 002- Construction Zone Entrance Pad

## **SITE**

### **REPRESENTATIVE:**

**Jeff Kohler Site Representative**  
**E&E Engineering, P. C.**

Name: (signature)



cc: file

D. Chiusano - Project Manager – NYSDEC  
D. Locey - NYSDEC Region 9  
G. Harris - Chief - NYSDEC  
M. Steffan – E & E Buffalo  
D. Miller – E & E Buffalo



# DAILY OBSERVATION REPORT

Report No.: 172-005

E&E Project File: NV28.01

Date: Friday, February 3, 2006



Figure 1 - Infiltration Basin Stone Layer 1



Figure 2 - Infiltration Basin Stone Layer 2

# DAILY OBSERVATION REPORT

Report No.: 172-005

E&E Project File: NV28.01

Date: Friday, February 3, 2006



Figure 3 – Truck Scale Approach Road



Figure 4 – Truck Scale Detail



# DAILY OBSERVATION REPORT

Report No.: 172-006

E&E Project File: NV28.01

Date: Monday, February 6, 2006

## NYSDEC

### Division of Environmental Remediation

### Shenango Steel Mold NYSDEC - Contract # D005660

Buffalo, New York

Temperature: (F) AM: 24 PM: 25

Wind Direction: AM: SW 30 G 41  
PM: W 28 G 33

Weather: AM: Overcast/Windy RH 65  
PM: Light Snow/Windy RH 75

Arrive at site 7:50 AM

Leave site: 4:00 PM

### HEALTH & SAFETY:

Are there any changes to the Health & Safety Plan?  
(If yes, list the deviation under items for concern)

Yes ( ) No (x)

Are monitoring results at acceptable  
levels?

--Soil	Yes (x) n/a ( )	* No ( )
--Water	Yes (x) n/a ( )	* No ( )
--Air	Yes (x ) n/a ( )	* No ( )

\* If No provide comments

### DESCRIPTION OF DAILY WORK PERFORMED:

AM: GC thawing out frozen tracks on JS 330 L excavator and refueling same. Moving debris piles away from load out area north side of the LNAPL area. Constructing load out road from LNAPL Area with on site materials. Preparing trail between LNAPL and TGA to allow excavator to move between the areas on geotextile mat sections for contamination control. Installed lagging below Office Trailers to stabilize them against further wind damage.

PM: Resecuring Office Trailers. Placed Jersey Barriers at the Load out Area adjacent to the LNAPL Area. GC moved the 330L excavator into the exclusion zone and began breaking concrete slab and debris to separate concrete and steel reinforcing. No material is being removed from the TGA at this time.

Daily Photos attached

### CONTRACTOR/SUBCONTRACTOR PERSONNEL AND EQUIPMENT

Personnel: (HES) – Brian Spangler (PM), Scott Clary (SO), Doug Klonsinski and Ed Pooters (Equip Operators)

Subcontractors: United Rentals (equipment)

### VISITORS TO SITE:

None

# DAILY OBSERVATION REPORT

Report No.: 172-006

E&E Project File: NV28.01

Date: Monday, February 6, 2006

## Equipment:

- (1) Deere 120C excavator w/breaker.....- op time – 7-12 (x) 12-4 ( )
- (1) JCB JS 330L excavator.....- op time – 7-12 (x) 12-4 (x)
- (1) Whisper Power MQ AC/DC Generator....- op time – 7-12 (x) 12-4 (x)
- (1) Deere 624H Front End Loader.....- op time – 7-12 (x) 12-4 ( )

## PROJECT SCHEDULE ISSUES:

None

## PROJECT BUDGET ISSUES:

Transmitted Draft CAP No. 1 (hand carry) comments from Mr. Steffan to Mr. Spangler.

## ITEMS OF CONCERN:

## COMMENTS:

Wind conditions over the past 24 hours caused minor damage at the site. The GC's office trailer was blown askew of supports and dropped down onto the trailer's tongue as a result. One of the 2 Portable Toilets was blown over.

The GC "officially" moved into the TGA with excavation equipment late today. Although no soil or other material was being moved out of the exclusion zone, it is noted that the 330 L is now contaminated. I reminded the contractor that air monitoring is to be in operation when they are working in the exclusion zone. Although the activity presently taking place is minimal-consisting of breaking and sorting debris; it is noted that no monitoring equipment is in place.

## PROJECT OVERTIME INFORMATION:

JJ Kohler (2)

## ATTACHMENTS:

Sketch Attached: Yes ( ) No (x)

Photos Taken: Yes (x) No ( )

## **SITE REPRESENTATIVE:**

**Jeff Kohler Site Representative  
E&E Engineering, P. C.**

Name: (signature)



cc: file

D. Chiusano - Project Manager – NYSDEC  
D.Locey - NYSDEC Region 9  
G.Harris - Chief - NYSDEC  
M. Steffan – E & E Buffalo  
D. Miller – E & E Buffalo

# DAILY OBSERVATION REPORT

Report No.: 172-006

E&E Project File: NV28.01

Date: Monday, February 6, 2006



**Figure 1 – Construction Fence at west side of Infiltration Basin**



**Figure 2 – Infiltration Basin looking north**



**Figure 3 – Sand pile at Infiltration Basin**

# DAILY OBSERVATION REPORT

Report No.: 172-006

E&E Project File: NV28.01

Date: Monday, February 6, 2006



Figure 4 – LNAPL Area Load Out Road installation



Figure 5 – Jersey Barriers at LNAPL Loading Area



Figure 6 – Concrete Debris at TGA



# DAILY OBSERVATION REPORT

Report No.: 172-006

E&E Project File: NV28.01

Date: Monday, February 6, 2006



**Figure 7 – Debris Field at TGA**



**Figure 8 – Wind Damage at Office Complex**

# DAILY OBSERVATION REPORT

Report No.: 172-007

E&E Project File: NV28.01

Date: Tuesday, February 7, 2006

## NYSDEC

### Division of Environmental Remediation

### Shenango Steel Mold NYSDEC - Contract # D005660

Buffalo, New York

Temperature: (F) AM: 26 PM: 27

Wind Direction: AM: NW 9 G 15  
PM: NW 8

Weather: AM: LtSnow/Fog/Mist RH 88  
PM: Lt Snow RH 81

Arrive at site 8:50 AM

Leave site: 5:30 PM

### HEALTH & SAFETY:

Are there any changes to the Health & Safety Plan?  
(If yes, list the deviation under items for concern)

Yes ( ) No (x)

Are monitoring results at acceptable  
levels?

--Soil

Yes (x) n/a ( )

\* No ( )

--Water

Yes (x) n/a ( )

\* No ( )

--Air

Yes (x ) n/a ( )

\* No ( )

\* If No provide comments

### DESCRIPTION OF DAILY WORK PERFORMED:

AM: GC installed DECON pad and extended haul out road at the LNAPL Area.

PM: Installed pipe plugs in existing manholes as per contract drawing 001 and 003.

Daily Photos attached

### CONTRACTOR/SUBCONTRACTOR PERSONNEL AND EQUIPMENT

Personnel: (HES) – Brian Spangler (PM), Scott Clary (SO), Doug Klonsinski and Ed Pooters (Equip Operators)

Subcontractors: United Rentals (equipment)

### VISITORS TO SITE:

Greg Jones EEEPC

# DAILY OBSERVATION REPORT

Report No.: 172-007

E&E Project File: NV28.01

Date: Tuesday, February 7, 2006

## Equipment:

- (1) Deere 120C excavator w/breaker.....- op time – 7-12 (x) 12-4 ( )
- (1) JCB JS 330L excavator.....- op time – 7-12 (x) 12-4 ( )
- (1) Whisper Power MQ AC/DC Generator.... - op time – 7-12 (x) 12-4 ( )
- (1) Deere 624H Front End Loader..... - op time – 7-12 (x) 12-4 ( )

## PROJECT SCHEDULE ISSUES:

None. GC appears to be making good progress toward completion.

## PROJECT BUDGET ISSUES:

None

## ITEMS OF CONCERN:

None

## COMMENTS:

Wind conditions over the past 24 hours have abated. Colder overnight temperatures are also helping to stiffen the soil. The installation of the pipe plugs at the existing manholes went smoothly and no leakage was noted. Temporary covers are in place.

## PROJECT OVERTIME INFORMATION:

## ATTACHMENTS:

Sketch Attached: Yes ( ) No (x)  
Photos Taken: Yes (x) No ( )

## **SITE REPRESENTATIVE:**

**Jeff Kohler Site Representative  
E&E Engineering, P. C.**

Name: (*signature*)



cc: file

D. Chiusano - Project Manager – NYSDEC  
D.Locey - NYSDEC Region 9  
G.Harris - Chief - NYSDEC  
M. Steffan – E & E Buffalo  
D. Miller – E & E Buffalo

# DAILY OBSERVATION REPORT

Report No.: 172-007

E&E Project File: NV28.01

Date: Tuesday, February 7, 2006



Figure 1 – LNAPL haul out road and DECON sand layer



Figure 2 – DECON sump/geotextile layer at LNAPL Area



Figure 3 – DECON sump/rubber mat at LNAPL Area

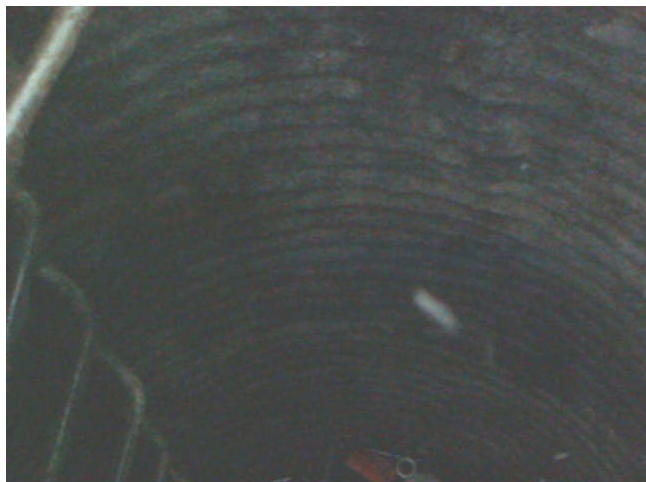


# DAILY OBSERVATION REPORT

Report No.: 172-007

E&E Project File: NV28.01

Date: Tuesday, February 7, 2006



**Figure 4 – Temporary plug at exist manhole**



**Figure 5 – Completed DECON at LNAPL Area**

# DAILY OBSERVATION REPORT

Report No.: 172-008

E&E Project File: NV28.01

Date: Wednesday, February 8, 2006

## NYSDEC

### Division of Environmental Remediation

### Shenango Steel Mold NYSDEC - Contract # D005660

Buffalo, New York

Temperature: (F) AM: 22 PM: 21

Wind Direction: AM: NW 3  
PM: N 6

Weather: AM: LtSnow RH 89  
PM: Sunny RH 74

Arrive at site 7:30 AM

Leave site: 4:00 PM

### HEALTH & SAFETY:

Are there any changes to the Health & Safety Plan?  
(If yes, list the deviation under items for concern) Yes ( ) No (x)

Are monitoring results at acceptable levels?	--Soil	Yes (x) n/a ( )	* No ( )
	--Water	Yes (x) n/a ( )	* No ( )
	--Air	Yes (x ) n/a ( )	* No ( )

\* If No provide comments

### DESCRIPTION OF DAILY WORK PERFORMED:

AM: GC is deploying air monitoring stations and hard wiring same to provide reliable power source in cold weather conditions. The concrete breaking attachment for the Deere 120C excavator is being fitted to the equipment by the operator.

PM: GC breaking concrete debris in the TGA.

Daily Photos attached

### CONTRACTOR/SUBCONTRACTOR PERSONNEL AND EQUIPMENT

Personnel: (HES) – Brian Spangler (PM), Scott Clary (SO), Doug Klonsinski and Ed Pooters (Equip Operators)  
Subcontractors:

### VISITORS TO SITE:

Greg Jones EEEPC  
Dave Locey NYSDEC Region 9

# DAILY OBSERVATION REPORT

Report No.: 172-008

E&E Project File: NV28.01

Date: Wednesday, February 8, 2006

## Equipment:

- (1) Deere 120C excavator w/breaker.....- op time – 7-12 (x) 12-4 ( )
- (1) JCB JS 330L excavator.....- op time – 7-12 ( ) 12-4 ( )
- (1) Whisper Power MQ AC/DC Generator....- op time – 7-12 (x) 12-4 ( )
- (1) Deere 624H Front End Loader.....- op time – 7-12 ( ) 12-4 ( )

## PROJECT SCHEDULE ISSUES:

## PROJECT BUDGET ISSUES:

## ITEMS OF CONCERN:

Greg Jones of EEEPC noted the GC using on site materials to construct haul out roadways from the LNAPL Area and Truck Scale. He is concerned that they may be inadvertently spreading contaminated soils in the process. So far they have been using only used refractory brick and slag.

I took the opportunity to discuss the issue with Dave Locey of NYSDEC Region 9 this morning, since he knows the site better than any of us. Dave's response was that the site has been tested at intervals required to determine remedial limits, but that we should consider the entire site contaminated to some degree and discourage the contractor from moving any fill from one location to another in the future.

## COMMENTS:

Progress Meeting was held here today at 11 AM. Minutes to follow.

## PROJECT OVERTIME INFORMATION:

## ATTACHMENTS:

Sketch Attached: Yes ( ) No ( )  
Photos Taken: Yes ( ) No ( )

## **SITE REPRESENTATIVE:**

**Jeff Kohler Site Representative  
E&E Engineering, P. C.**

Name: (signature)



cc: file

D. Chiusano - Project Manager – NYSDEC  
D.Locey - NYSDEC Region 9  
G.Harris - Chief - NYSDEC  
M. Steffan – E & E Buffalo  
D. Miller – E & E Buffalo

# DAILY OBSERVATION REPORT

Report No.: 172-008

E&E Project File: NV28.01

Date: Wednesday, February 8, 2006



**Figure 1 – Debris Piles and Concrete Vault west of the LNAPL Area looking south**



**Figure 2 – Debris Piles and Concrete Vault west of the LNAPL Area looking north**



**Figure 3 – Hot wire for Dust Trak at LNAPL area**



# DAILY OBSERVATION REPORT

Report No.: 172-008

E&E Project File: NV28.01

Date: Wednesday, February 8, 2006



Figure 4 – Conference Room at NYSDEC Site Office



Figure 5 – Deere 102C with concrete breaker attached



Figure 6 – Concrete debris @ TGA

# DAILY OBSERVATION REPORT

Report No.: 172-009

E&E Project File: NV28.01

Date: Thursday, February 9, 2006

## NYSDEC

### Division of Environmental Remediation

### Shenango Steel Mold NYSDEC - Contract # D005660

Buffalo, New York

Temperature: (F) AM: 23 PM: 22

Wind Direction: AM: W14 G 22  
PM: W15

Weather: AM: Sunny RH 63  
PM: Lt Snow RH 78

Arrive at site 7:15 AM

Leave site: 4:40 PM

### HEALTH & SAFETY:

Are there any changes to the Health & Safety Plan?  
(If yes, list the deviation under items for concern) Yes ( ) No (x)

Are monitoring results at acceptable levels?	--Soil	Yes (x) n/a ( )	* No ( )
	--Water	Yes (x) n/a ( )	* No ( )
	--Air	Yes (x ) n/a ( )	* No ( )

\* If No provide comments

### DESCRIPTION OF DAILY WORK PERFORMED:

AM: GC breaking concrete debris in the TGA until 10 AM. Elected to move the 330L excavator to the LNAPL Area and begin operations in the containment area. Air Quality monitors are in place.

PM: GC continued to excavate and stockpile LNAPL soil. Silt and orange construction fence barriers erected at grade level entry points around the excavation. Reinforced concrete foundation walls and footing was encountered in the excavated area. Refer to comments section for additional detail.

Daily Photos attached

### CONTRACTOR/SUBCONTRACTOR PERSONNEL AND EQUIPMENT

Personnel: (HES) – Brian Spangler (PM), Scott Clary (SO), Doug Klonsinski and Ed Pooters (Equip Operators)

Subcontractors: Rain for Rent (pump skid and filters)

### VISITORS TO SITE:

None

# DAILY OBSERVATION REPORT

Report No.: 172-009

E&E Project File: NV28.01

Date: Thursday, February 9, 2006

## Equipment:

- (1) Deere 120C excavator w/breaker.....- op time – 7-12 (x) 12-4 (x)
- (1) JCB JS 330L excavator.....- op time – 7-12 (x) 12-4 (x)
- (1) Whisper Power MQ AC/DC Generator....- op time – 7-12 (x) 12-4 (x)
- (1) Deere 624H Front End Loader.....- op time – 7-12 (x ) 12-4 ( )

## PROJECT SCHEDULE ISSUES:

None

## PROJECT BUDGET ISSUES:

None

## ITEMS OF CONCERN:

None

## COMMENTS:

At approximately 11:30 AM the GC reached the southern, eastern and western limits of the LNAPL Area and requested a visual observation on contamination limits. Based on these visual observations, and upon consultation with the General Contractor, it appears that the southern extent of contaminated soil has been reached. The GC will not remove additional material beyond this point. At the west sidewall, visual observations indicated the clay stratum had been exposed with respect to depth, but marginally contaminated soil extended beyond the edge of the excavation. Therefore, in accordance with Section 02220-2 of the Project Specification, and as a precursor to taking sidewall samples, I requested that an additional 5 feet of material be removed beyond the LNAPL exclusion zone as shown on Contract Drawing 003. With respect to the east sidewall, visual observation clearly indicated that contaminated soils extend beyond the current exclusion zone limit. Again, I requested the GC to remove an additional 5 feet of material from the east sidewall to better determine the actual extent of the LNAPL contamination. No additional depth will be excavated from either sidewall at this time.

Upon reaching the revised sidewall limits, further excavation in the easterly and westerly directions ceased and 3 confirmatory samples were taken to ascertain actual contamination levels present.

## PROJECT OVERTIME INFORMATION:

JJ Kohler (4)

## ATTACHMENTS:

Sketch Attached: Yes ( ) No ( x )

Photos Taken: Yes ( x ) No ( )

## **SITE REPRESENTATIVE:**

**Jeff Kohler Site Representative  
E&E Engineering, P. C.**

Name: (signature)



cc: file

D. Chiusano - Project Manager – NYSDEC  
D.Locey - NYSDEC Region 9  
G.Harris - Chief - NYSDEC  
M. Steffan – E & E Buffalo  
D. Miller – E & E Buffalo

# DAILY OBSERVATION REPORT

Report No.: 172-009

E&E Project File: NV28.01

Date: Thursday, February 9, 2006



**Figure 1 – Moving 330L excavator from TGA to LNAPL Area using geotextile mats to control contamination**



**Figure 2 – Breaking concrete at the TGA-AM**



**Figure 3 – Stockpiling LNAPL soil within the exclusion Zone-AM**



# DAILY OBSERVATION REPORT

Report No.: 172-009

E&E Project File: NV28.01

Date: Thursday, February 9, 2006



Figure 4 – Dust Trak @ LNAPL Area-AM



Figure 5 – LNAPL Excavation 11 AM



Figure 6 – Silt Fence at LNAPL Area-PM

# DAILY OBSERVATION REPORT

Report No.: 172-009

E&E Project File: NV28.01

Date: Thursday, February 9, 2006



Figure 7 – West wall of LNAPL Area-PM



Figure 8 – East wall of LNAPL Area-PM



Figure 9 – LNAPL Excavation looking north-PM

# DAILY OBSERVATION REPORT

Report No.: 172-010

E&E Project File: NV28.01

Date: Friday, February 10, 2006

## NYSDEC

### Division of Environmental Remediation

### Shenango Steel Mold NYSDEC - Contract # D005660

Buffalo, New York

Temperature: (F) AM: 18°F PM: 21°F

Wind Direction: AM: E 7  
PM: NE 5

Weather: AM: Lt Snow RH 84  
PM: Snow/Freezing Fog RH 91

Arrive at site 7:15 AM

Leave site: 4:30 PM

### HEALTH & SAFETY:

Are there any changes to the Health & Safety Plan?  
(If yes, list the deviation under items for concern) Yes ( ) No ( )

Are monitoring results at acceptable levels?	--Soil	Yes (x) n/a ( )	* No ( )
	--Water	Yes (x) n/a ( )	* No ( )
	--Air	Yes (x ) n/a ( )	* No ( )

\* If No provide comments

### DESCRIPTION OF DAILY WORK PERFORMED:

AM: GC breaking concrete wall and slab in the LNAPL Area. Stockpiling contaminated soils as space within the LNAPL Area permits. Air Quality monitors are in place and operational. AM reading .0054ppb.

PM: GC moved the Deere 120C with breaker into the LNAPL exclusion zone and continued breaking concrete debris at that location. GC has reached limit of excavation possible in LNAPL Area without physically moving material off site. Therefore, the GC opted to move the JCB 330L on containment fabric back to the TGA where it resumed sorting and stockpiling concrete and reinforcing steel debris.

Daily Photos attached

### CONTRACTOR/SUBCONTRACTOR PERSONNEL AND EQUIPMENT

Personnel: (HES) – Brian Spangler (PM), Scott Clary (SO), Doug Klonsinski and Ed Pooters (Equip Operators)  
Subcontractors:

### VISITORS TO SITE:

Jeff Kohler EEEPC



# DAILY OBSERVATION REPORT

Report No.: 172-010

E&E Project File: NV28.01

Date: Friday, February 10, 2006

## Equipment:

- (1) Deere 120C excavator w/breaker.....- op time – 7-12 ( ) 12-4 (x)
- (1) JCB JS 330L excavator.....- op time – 7-12 (x) 12-4 (x)
- (1) Whisper Power MQ AC/DC Generator....- op time – 7-12 (x) 12-4 (x)
- (1) Deere 624H Front End Loader.....- op time – 7-12 ( ) 12-4 (x)

## PROJECT SCHEDULE ISSUES:

In view of today's delay in securing final waste permit approval and scale certification issues, the total schedule slip will be approximately 4 days.

## PROJECT BUDGET ISSUES:

None to report

## ITEMS OF CONCERN:

None to report

## COMMENTS:

Buffalo Police Department cruiser visited the site approximately 1:20 PM.

## PROJECT OVERTIME INFORMATION:

## ATTACHMENTS:

Sketch Attached: Yes ( ) No ( )

Photos Taken: Yes (x) No ( )

## **SITE REPRESENTATIVE:**

**Greg Jones, Site Representative  
E&E Engineering, P. C.**

Name: (signature)



cc: file

D. Chiusano - Project Manager – NYSDEC  
D.Locey - NYSDEC Region 9  
G.Harris - Chief - NYSDEC  
M. Steffan – E & E Buffalo  
D. Miller – E & E Buffalo

# DAILY OBSERVATION REPORT

Report No.: 172-010

E&E Project File: NV28.01

Date: Friday, February 10, 2006



Figure 1 – Project Sign



Figure 2 – LNAPL Area looking west



Figure 3 – Breaking reinforced concrete at LNAPL Area

# DAILY OBSERVATION REPORT

Report No.: 172-011

E&E Project File: NV28.01

Date: Monday, February 13, 2006

## NYSDEC

### Division of Environmental Remediation

### Shenango Steel Mold NYSDEC - Contract # D005660

Buffalo, New York

Temperature: (F) AM: 21°F PM: 27°F

Wind Direction: AM: W 22 gust to 25 mph  
PM: W 23 gust to 40 mph

Weather: AM: Cloudy RH 66  
PM: Blowing Snow RH 63

Arrive at site 7:05 AM

Leave site: 4:30 PM

### HEALTH & SAFETY:

Are there any changes to the Health & Safety Plan?  
(If yes, list the deviation under items for concern)

Yes ( ) No ( )

Are monitoring results at acceptable  
levels?

--Soil	Yes (x) n/a ( )	* No ( )
--Water	Yes (x) n/a ( )	* No ( )
--Air	Yes (x ) n/a ( )	* No ( )

\* If No provide comments

### DESCRIPTION OF DAILY WORK PERFORMED:

AM: GC breaking concrete within the TGA in preparation of excavating. Stockpiled contaminated soil  
In the TGA Area. Air Quality dust monitors installed upwind and downwind of the TGA.

PM: GC excavated soil in the TGA from east to west approximately one foot below ground surface within  
the excavation limits. The GC excavated down to eight feet below ground surface on the north side  
of the TGA where groundwater were encountered at five feet. No visible sheen of petroleum was  
observed. All excavated soil was stockpiled and covered with poly at the end of the day.

Daily Photos attached

### CONTRACTOR/SUBCONTRACTOR PERSONNEL AND EQUIPMENT

Personnel: (HES) – Brian Spangler (PM), Scott Clary (SO), Doug Klonsinski and Ed Pooters (Equip Operators)  
Subcontractors:

### VISITORS TO SITE:

Rain for Rent (1)

# DAILY OBSERVATION REPORT

Report No.: 172-011

E&E Project File: NV28.01

Date: Monday, February 13, 2006

## Equipment:

- (1) Deere 120C excavator w/hammer.....- op time – 7-12 ( ) 12-4 (x)
- (1) JCB JS 330L excavator.....- op time – 7-12 (x) 12-4 (x)
- (1) Whisper Power MQ AC/DC Generator....- op time – 7-12 (x) 12-4 (x)
- (1) Deere 624H Front End Loader.....- op time – 7-12 ( ) 12-4 (x)

## PROJECT SCHEDULE ISSUES:

Based on the progress schedule submitted by Horizon and today's delay in securing final waste permit approval and scale certification issues, the contractor will be approximately 5 days behind schedule.

## PROJECT BUDGET ISSUES:

None to report at this time

## ITEMS OF CONCERN:

EEEEPC representative informed Horizon's Brian Spangler the excavated soil will remain on site until approved waste profiles from the landfill has been received by EEEPC along with the onsite scale certification discussed at progress meeting No. 1.

## COMMENTS:

Horizon informed EEEPC site representative the dust monitors set up last week failed to log data, and assured the site representative the instruments would be functional this week.

I

## PROJECT OVERTIME INFORMATION:

## ATTACHMENTS:

Sketch Attached: Yes ( ) No ( )

Photos Taken: Yes (x) No ( )

**SITE  
REPRESENTATIVE:**

**Greg Jones, Site Representative  
E&E Engineering, P. C.**

Name: (signature)



cc: file

D. Chiusano - Project Manager – NYSDEC  
D. Locey - NYSDEC Region 9  
G. Harris - Chief - NYSDEC  
M. Steffan – E & E Buffalo  
D. Miller – E & E Buffalo

# DAILY OBSERVATION REPORT

Report No.: 172-011

E&E Project File: NV28.01

Date: Monday, February 13, 2006



**Figure 1: GC re -covering LNAPL spoil pile (facing south)**



**Figure 2: GC breaking up and clearing concrete prior to excavation it the TGA (facing east)**



**Figure 3: GC excavating soil in the TGA (facing north)**



# DAILY OBSERVATION REPORT

Report No.: 172-011

E&E Project File: NV28.01

Date: Monday, February 13, 2006



**Figure 4: GC removing concrete debris from TGA excavation (facing south)**



**Figure 5: Shows excavation on north end of TGA eight feet below ground surface (facing east)**

# DAILY OBSERVATION REPORT

Report No.: 172-012

E&E Project File: NV28.01

Date: Tuesday, February 14, 2006

## NYSDEC

Temperature: (F) AM: 28°F PM: 39°F

## Division of Environmental Remediation

Wind Direction: AM: W 15-20 mph

PM: W 10-12 mph

## Shenango Steel Mold NYSDEC - Contract # D005660

Weather: AM: Cloudy RH 73  
PM: Cloudy RH 68

Buffalo, New York

Arrive at site 7:15 AM

Leave site: 4:30 PM

## HEALTH & SAFETY:

Are there any changes to the Health & Safety Plan?  
(If yes, list the deviation under items for concern)

Yes ( )

No ( )

Are monitoring results at acceptable  
levels?

--Soil

Yes (x) n/a ( )

\* No ( )

--Water

Yes (x) n/a ( )

\* No ( )

--Air

Yes (x ) n/a ( )

\* No ( )

\* If No provide comments

## DESCRIPTION OF DAILY WORK PERFORMED:

AM: GC excavated and stockpiled a small amount of soil from the west end of the TGA. The GC installed geo-fabric on the ground at the load out area of the LNAPL stockpile. The GC also performed some site maintenance by removing snow from the site access roads. GC set up dust monitors upwind and downwind of the site.

PM: GC loaded out approximately blank tons of excavated soil from the LNAPL stockpile to Pariso Trucking and transported the soil to Town of Tonawanda Landfill.

Daily Photos attached

## CONTRACTOR/SUBCONTRACTOR PERSONNEL AND EQUIPMENT

Personnel: (HES) – Brian Spangler (PM), Scott Clary (SO), Doug Klonsinski and Ed Pooters (Equip Operators)

Subcontractors: Pariso Trucking

## VISITORS TO SITE:

None

# DAILY OBSERVATION REPORT

Report No.: 172-012

E&E Project File: NV28.01

Date: Tuesday, February 14, 2006

## Equipment:

- (1) Deere 120C excavator w/hammer.....- op time – 7-12 ( ) 12-4 (x)
- (1) JCB JS 330L excavator.....- op time – 7-12 (x) 12-4 (x)
- (1) Whisper Power MQ AC/DC Generator....- op time – 7-12 (x) 12-4 (x)
- (1) Deere 624H Front End Loader.....- op time – 7-12 ( ) 12-4 (x)

## PROJECT SCHEDULE ISSUES:

Based on the progress schedule submitted by Horizon and today's load out of non-hazardous soil, Horizon will be approximately 4 days behind schedule.

## PROJECT BUDGET ISSUES:

None to report at this time

## ITEMS OF CONCERN:

Horizon shall submit a RFI concerning the visible oil on the walls of the LNAPL excavation. Questioning if the excavation should proceed past the excavation limits until clean soils are encountered.

## COMMENTS:

Horizon's waste stream application for acceptance has been approved by the Town of Tonawanda Land Landfill. But acceptance by Modern Landfill has not been received by EEEPC. GC collected two samples today from the TGA excavation: TGA-01 (soil) from northwall of excavation, TGA-05 (soil) from floor of the excavation 8-feet below ground surface. The locations have been noted on the site drawing.

Daily tonnage = 309.84

## PROJECT OVERTIME INFORMATION:

## ATTACHMENTS:

Sketch Attached: Yes ( ) No ( )

Photos Taken: Yes (x) No ( )

## **SITE REPRESENTATIVE:**

**Greg Jones, Site Representative  
E&E Engineering, P. C.**

Name: (signature)



cc: file

D. Chiusano - Project Manager – NYSDEC  
D. Locey - NYSDEC Region 9  
G. Harris - Chief - NYSDEC  
M. Steffan – E & E Buffalo  
D. Miller – E & E Buffalo

# DAILY OBSERVATION REPORT

Report No.: 172-012

E&E Project File: NV28.01

Date: Tuesday, February 14, 2006



**Figure 1: GC installing load out pad with geo-fabric for trucks (facing southwest)**



**Figure 2: GC loading out soil from Hydraulic oil LNAPL stockpile(facing southwest)**



**Figure 3: Load out area for Hydraulic Oil Area LNAPL (south)**

# DAILY OBSERVATION REPORT

Report No.: 172-012

E&E Project File: NV28.01

Date: Tuesday, February 14, 2006



**Figure 4: Loaded truck on site scale (facing east)**

# DAILY OBSERVATION REPORT

Report No.: 172-013

E&E Project File: NV28.01

Date: Wednesday, February 15, 2006

## NYSDEC

### Division of Environmental Remediation

### Shenango Steel Mold NYSDEC - Contract # D005660

Buffalo, New York

Temperature: (F) AM: 40°F PM: 47°F

Wind Direction: AM: SW 5 -12 mph  
PM: SW 10-15 mph

Weather: AM: Partly Cloudy RH 53  
PM: Cloudy RH 60

Arrive at site 7:20 AM

Leave site: 4:30 PM

### HEALTH & SAFETY:

Are there any changes to the Health & Safety Plan?  
(If yes, list the deviation under items for concern)

Yes ( ) No ( )

Are monitoring results at acceptable  
levels?

--Soil	Yes (x) n/a ( )	* No ( )
--Water	Yes (x) n/a ( )	* No ( )
--Air	Yes (x ) n/a ( )	* No ( )

\* If No provide comments

### DESCRIPTION OF DAILY WORK PERFORMED:

AM: GC loaded out three trucks loads of soil from the LNAPL stockpile before the hydraulic hose on the excavator broken. The remainder of the morning was spent on repairing the excavator. The GC set up dust monitoring upwind and downwind of the LNAPL soil load out area.

PM: GC loaded out 18 trucks totaling 389.66 tons of excavated soil from the LNAPL stockpile to Pariso Trucking and transported the soil to Town of Tonawanda Landfill.

Daily Photos attached:

### CONTRACTOR/SUBCONTRACTOR PERSONNEL AND EQUIPMENT

Personnel: (HES) – Brian Spangler (PM), Scott Clary (SO), Doug Klonsinski and Ed Pooters (Equip Operators)

Subcontractors: Pariso Trucking

### VISITORS TO SITE:

United Equipment Rental (2)

# DAILY OBSERVATION REPORT

Report No.: 172-013

E&E Project File: NV28.01

Date: Wednesday, February 15, 2006

## Equipment:

- (1) Deere 220 LC excavator..... - op time – 7-12 ( ) 12-4 ( )
- (1) JCB JS 330L excavator.....- op time – 7-12 ( ) 12-4 (x)
- (1) Whisper Power MQ AC/DC Generator....- op time – 7-12 (x) 12-4 (x)
- (1) Deere 624H Front End Loader..... - op time – 7-12 ( ) 12-4 ( )

## PROJECT SCHEDULE ISSUES:

Based on the progress schedule submitted by Horizon and today's load out of non-hazardous soil, Horizon will be approximately 4 days behind schedule.

## PROJECT BUDGET ISSUES:

None to report at

## ITEMS OF CONCERN:

Horizon shall submit a RFI concerning the visible oil on the walls of the LNAPL excavation. Questioning if the excavation should proceed past the excavation limits until visible clean soils are encountered. Also Horizon plan to load out soil from the TGA at same time as the LNAPL area. EEEPC representative has cautioned Horizon not to mix the TGA LNAPL soils with soils containing PCB's.

## COMMENTS:

Horizon's JCB JS Excavator was out of service this morning for approximately four hours with a broken hydraulic hose. Also Horizon will formerly request a change in working hours from 7:00 AM to 3:00 PM due to the landfill closing at 4:00 PM.

## PROJECT OVERTIME INFORMATION:

## ATTACHMENTS:

Sketch Attached: Yes ( ) No ( )  
Photos Taken: Yes (x) No ( )

## **SITE**

## **REPRESENTATIVE:**

**Greg Jones, Site Representative**  
**E&E Engineering, P. C.**

Name: (signature)





# DAILY OBSERVATION REPORT

Report No.: 172-013

cc: file

E&E Project File: NV28.01

D. Chiusano - Project Manager – NYSDEC

D.Locey - NYSDEC Region 9

G.Harris - Chief - NYSDEC

M. Steffan – E & E Buffalo

D. Miller – E & E Buffalo

Date: Wednesday, February 15, 2006



Figure DSC00013: GC and United Rental repairing JCB JS Excavator (facing west)



Figure DSC00014: GC personal performing equipment while excavator is out of service (facing west)



Figure DSC00015: Shows petroleum sheen on water in the LNAPL excavation (facing west)

# DAILY OBSERVATION REPORT

Report No.: 172-013

E&E Project File: NV28.01

Date: Wednesday, February 15, 2006



**Figure DSC00016: GC loading out soil from the petroleum spill area, LNAPL stockpile (facing north)**

# DAILY OBSERVATION REPORT

Report No.: 172-014

E&E Project File: NV28.03

Date: Thursday, February 16, 2006

**NYSDEC**

DR 172 - 014

Temperature: (F) 30s (am) 15s (pm)

**Division of Environmental Remediation  
Shenago Steel Mold Site, NYSDEC Site  
#9-15-172**

Wind Direction: W (am) W (pm)

Weather: (am) Cloudy, High Wind Gust  
(pm) Cloudy, High Wind Warning

Contract # D005660

Arrive at site 0650 (am)

Buffalo, New York

Leave site: 1545 (pm)

## HEALTH & SAFETY:

Are there any changes to the Health & Safety Plan?  
(If yes, list the deviation under items for concern)

Yes ( ) No ( X )

Are monitoring results at acceptable levels?

Soil  
Waters  
Air

Yes ( ) n/a ( X ) \* No ( )  
Yes ( ) n/a ( X ) \* No ( )  
Yes ( X ) n/a ( ) \* No ( )

- If No, provide comments

## OTHER ITEMS:

Site Sketch Attached:

Yes ( ) No ( X )

Photos Taken:

Yes ( X ) No ( )

## DESCRIPTION OF DAILY WORK PERFORMED:

Horizon Environmental Services personnel onsite and continue excavation and load out soil from the LNAPL Hydraulic Oil Spill Area. Horizon set up dust monitors upwind and downwind of the LNAPL excavation and soil stockpile area. Horizon loaded out (27 truckloads) of non-hazardous soil from the Hydraulic Oil Spill Area to Pariso Trucking for disposal at Town of Tonawanda Landfill totaling 799.57 tons. To date approximately 1,508.07 tons of soil from the LNAPL Limits of Excavation near MW-3 has been transported off site.

### **SAMPLING (Soil/Water/Air)**

Contractor Sample ID:

E & E Sample ID:

Description:

None.		
TG-001W		(Soil) Confirmation – TCL-PCB's (CAT. B)
TG-002W		(Soil) Confirmation – TCL-PCB's (CAT.B)
TG-PCB-216		(Soil) Total PCB's only
LN-05W		(Soil) Confirmation SVOC's (CAT. B)
LG-003F		(Soil) Confirmation SVOC's (CAT. B)
LN-04W		(Soil) Confirmation SVOC's (CAT.B)
LN-DECON		(Soil) –SVOC's

## DAILY OBSERVATION REPORT

Report No.: 172-014

E&E Project File: NV28.03

Date: Thursday, February 16, 2006

### **CONTRACTOR/SUBCONTRACTOR EQUIPMENT AND PERSONNEL ON SITE:**

*Horizon personnel:* Scott Clary (site superintendent), Brian Spangler, Ed Pooters (operator), Doug Cummings (operator) onsite.

*Horizon equipment:* John Deere 200LC excavator\*, John Deere 120C excavator w/hammer\*, John Deere 624H Front Loader\*, water treatment system\*

*Subcontractors:* Pariso Trucking

*\* Indicates active equipment*

### **VISITORS TO SITE:**

None.

### **PROJECT SCHEDULE ISSUES:**

None.

### **PROJECT BUDGET ISSUES:**

None.

### **ITEMS OF CONCERN:**

None.

### **COMMENTS:**

None.

### **ATTACHMENT(S) TO THIS REPORT:** Photo log and photos

### **SITE REPRESENTATIVE:** Gregory Jones, Ecology & Environment Engineering, P. C.

Name: (signature)



CC:

D. Chiusano - Project Manager – NYSDEC  
D. Locey - NYSDEC Region 9  
G. Harris - Chief - NYSDEC  
M. Steffan – E & E Buffalo  
D. Miller – E & E Buffalo



# DAILY OBSERVATION REPORT

Report No.: 172-014

E&E Project File: NV28.03

Date: Thursday, February 16, 2006

## DAILY PHOTOLOG

Date	Photo ID	Description	Direction
2/16/06	000_001.jpg	Excavating soil from the top of the concrete slab in LNAPL Area.	N
2/16/06	000_003.jpg	Stockpiling excavated sol for load out.	NW
2/16/06	000_0089.jpg	Loading soil from LNAPL stockpile to Pariso Trucking	SW
2/16/06	000_005.jpg	View of soil excavation and stockpile load at the LNAPL Area.	NW



000\_001.jpg



000\_003.jpg



000\_004.jpg



000\_005.jpg

# DAILY OBSERVATION REPORT

Report No.: 172-015

E&E Project File: NV28.03

Date: Friday, February 17, 2006

**NYSDEC**

DR 172 - 015

Temperature: (F) 30s (am) 15s (pm)

**Division of Environmental Remediation  
Shenago Steel Mold Site, NYSDEC Site  
#9-15-172**

Wind Direction: W (am) W (pm)

Weather: (am) Cloudy, High Wind Gust  
(pm) Cloudy, High Wind Warning

Contract # D005660

Arrive at site 0650 (am)

Buffalo, New York

Leave site: 1545 (pm)

## HEALTH & SAFETY:

Are there any changes to the Health & Safety Plan?  
(If yes, list the deviation under items for concern)

Yes ( ) No ( X )

Are monitoring results at acceptable levels?

Soil  
Waters  
Air

Yes ( ) n/a ( X ) \* No ( )  
Yes ( ) n/a ( X ) \* No ( )  
Yes ( X ) n/a ( ) \* No ( )

- If No, provide comments

## OTHER ITEMS:

Site Sketch Attached:

Yes ( ) No ( X )

Photos Taken:

Yes ( X ) No ( )

## DESCRIPTION OF DAILY WORK PERFORMED:

Horizon Environmental Services personnel onsite and continue excavation and load out soil from the LNAPL Hydraulic Oil Spill Area. Horizon set up dust monitors upwind and downwind of the LNAPL excavation and soil stockpile area. Horizon loaded out (27 truckloads) of non-hazardous soil from the Hydraulic Oil Spill Area to Pariso Trucking for disposal at Town of Tonawanda Landfill totaling 611.87 tons.

### **SAMPLING (Soil/Water/Air)**

**Contractor Sample ID:**

**E & E Sample ID:**

**Description:**

LN-06W		(Soil) SVOC's CAT. B
LN-03WR		(Soil) SVOC's CAT. B
LN-07W		(Soil) SVOC's CAT.B

## DAILY OBSERVATION REPORT

Report No.: 172-015

E&E Project File: NV28.03

Date: Friday, February 17, 2006

### **CONTRACTOR/SUBCONTRACTOR EQUIPMENT AND PERSONNEL ON SITE:**

*Horizon personnel:* Scott Clary (site superintendent), Brian Spangler, Ed Pooters (operator), Doug Cummings (operator) onsite.

*Horizon equipment:* John Deere 200LC excavator\*, John Deere 120C excavator w/hammer\*, John Deere 624H Front Loader\*, water treatment system\*

*Subcontractors:* Pariso Trucking

*\* Indicates active equipment*

### **VISITORS TO SITE:**

None.

### **PROJECT SCHEDULE ISSUES:**

None.

### **PROJECT BUDGET ISSUES:**

None.

### **ITEMS OF CONCERN:**

None.

### **COMMENTS:**

None.

**ATTACHMENT(S) TO THIS REPORT:** No photos taken today.

**SITE REPRESENTATIVE:** Gregory Jones, Ecology & Environment Engineering, P. C.

Name: (signature)



CC:

D. Chiusano - Project Manager – NYSDEC  
D. Locey - NYSDEC Region 9  
G. Harris - Chief - NYSDEC  
M. Steffan – E & E Buffalo  
D. Miller – E & E Buffalo



## DAILY OBSERVATION REPORT

Report No.: 172-015

E&E Project File: NV28.03

Date: Friday, February 17, 2006

### DAILY PHOTOLOG

Date	Photo ID	Description	Direction
No photos taken today.			