



Department of  
Environmental  
Conservation

**Brownfield Cleanup Program**  
**Citizen Participation Plan**  
for  
**Parkway Plaza Cleaners Site, Site No. C835028**

October 2018

Parkway Plaza Limited Partnership  
c/o Richard Crossed  
46 Prince Street, Suite 2003  
Rochester, New York 14607

## Contents

<u>Section</u>	<u>Page Number</u>
1. What is New York’s Brownfield Cleanup Program? .....	3
2. Citizen Participation Activities.....	3
3. Major Issues of Public Concern.....	9
4. Site Information.....	9
5. Investigation and Cleanup Process .....	11
Appendix A - Project Contacts and Locations of Reports and Information .....	15
Appendix B - Site Contact List.....	16
Appendix C - Site Location Map.....	21
Appendix D - Brownfield Cleanup Program Process.....	22

\* \* \* \* \*

**Note:** The information presented in this Citizen Participation Plan was current as of the date of its approval by the New York State Department of Environmental Conservation. Portions of this Citizen Participation Plan may be revised during the site’s investigation and cleanup process.

Applicant: Parkway Plaza Limited Partnership (“Applicant”)  
Site Name: Parkway Plaza Cleaners Site (“Site”)  
Site Address: 47, 51 and 57 Eastern Boulevard, Canandaigua, NY  
Site County: Ontario County  
Site Number: C835028

## **1. What is New York’s Brownfield Cleanup Program?**

New York’s Brownfield Cleanup Program (BCP) works with private developers to encourage the voluntary cleanup of contaminated properties known as “brownfields” so that they can be reused and developed. These uses include recreation, housing, and business.

A *brownfield* is any real property that is difficult to reuse or redevelop because of the presence or potential presence of contamination. A brownfield typically is a former industrial or commercial property where operations may have resulted in environmental contamination. A brownfield can pose environmental, legal, and financial burdens on a community. If a brownfield is not addressed, it can reduce property values in the area and affect economic development of nearby properties.

The BCP is administered by the New York State Department of Environmental Conservation (NYSDEC) which oversees Applicants who conduct brownfield site investigation and cleanup activities. An Applicant is a person who has requested to participate in the BCP and has been accepted by NYSDEC. The BCP contains investigation and cleanup requirements, ensuring that cleanups protect public health and the environment. When NYSDEC certifies that these requirements have been met, the property can be reused or redeveloped for the intended use.

For more information about the BCP, go online at:  
<http://www.dec.ny.gov/chemical/8450.html> .

## **2. Citizen Participation Activities**

### *Why NYSDEC Involves the Public and Why It Is Important*

NYSDEC involves the public to improve the process of investigating and cleaning up contaminated sites, and to enable citizens to participate more fully in decisions that affect their health, environment, and social well-being. NYSDEC provides opportunities for citizen involvement and encourages early two-way communication with citizens before decision makers form or adopt final positions.

Involving citizens affected and interested in site investigation and cleanup programs is important for many reasons. These include:

- Promoting the development of timely, effective site investigation and cleanup programs that protect public health and the environment
- Improving public access to, and understanding of, issues and information related to a particular site and that site's investigation and cleanup process
- Providing citizens with early and continuing opportunities to participate in NYSDEC's site investigation and cleanup process
- Ensuring that NYSDEC makes site investigation and cleanup decisions that benefit from input that reflects the interests and perspectives found within the affected community
- Encouraging dialogue to promote the exchange of information among the affected/interested public, State agencies, and other interested parties that strengthens trust among the parties, increases understanding of site and community issues and concerns, and improves decision making.

This Citizen Participation (CP) Plan provides information about how NYSDEC will inform and involve the public during the investigation and cleanup of the site identified above. The public information and involvement program will be carried out with assistance, as appropriate, from the Applicant.

#### *Project Contacts*

Appendix A identifies NYSDEC project contact(s) to whom the public should address questions or request information about the site's investigation and cleanup program. The public's suggestions about this CP Plan and the CP program for the site are always welcome. Interested people are encouraged to share their ideas and suggestions with the project contacts at any time.

#### *Locations of Reports and Information*

The locations of the reports and information related to the site's investigation and cleanup program also are identified in Appendix A. These locations provide convenient access to important project documents for public review and comment. Some documents may be placed on the NYSDEC web site. If this occurs, NYSDEC will inform the public in fact sheets distributed about the site and by other means, as appropriate.

## *Site Contact List*

Appendix B contains the site contact list. This list has been developed to keep the community informed about, and involved in, the site's investigation and cleanup process. The site contact list will be used periodically to distribute fact sheets that provide updates about the status of the project. These will include notifications of upcoming activities at the site (such as fieldwork), as well as availability of project documents and announcements about public comment periods.

The site contact list includes, at a minimum:

- chief executive officer and planning board chairperson of each county, city, town and village in which the site is located;
- residents, owners, and occupants of the site and properties adjacent to the site;
- the public water supplier which services the area in which the site is located;
- any person who has requested to be placed on the site contact list;
- the administrator of any school or day care facility located on or near the site for purposes of posting and/or dissemination of information at the facility;
- location(s) of reports and information.

The site contact list will be reviewed periodically and updated as appropriate. Individuals and organizations will be added to the site contact list upon request. Such requests should be submitted to the NYSDEC project contact(s) identified in Appendix A. Other additions to the site contact list may be made at the discretion of the NYSDEC project manager, in consultation with other NYSDEC staff as appropriate.

**Note:** The first site fact sheet (usually related to the draft Remedial Investigation Work Plan) is distributed both by paper mailing through the postal service and through DEC Delivers, its email listserv service. The fact sheet includes instructions for signing up with the appropriate county listserv to receive future notifications about the site. See <http://www.dec.ny.gov/chemical/61092.html> .

Subsequent fact sheets about the site will be distributed exclusively through the listserv, except for households without internet access that have indicated the need to continue to receive site information in paper form. Please advise the NYSDEC site project manager identified in Appendix A if that is the case. Paper mailings may continue during the investigation and cleanup process for some sites, based on public interest and need.

## *CP Activities*

The table at the end of this section identifies the CP activities, at a minimum, that have been and will be conducted during the site's investigation and cleanup program. The

flowchart in Appendix D shows how these CP activities integrate with the site investigation and cleanup process. The public is informed about these CP activities through fact sheets and notices distributed at significant points during the program. Elements of the investigation and cleanup process that match up with the CP activities are explained briefly in Section 5.

- **Notices and fact sheets** help the interested and affected public to understand contamination issues related to a site, and the nature and progress of efforts to investigate and clean up a site.
- **Public forums, comment periods and contact with project managers** provide opportunities for the public to contribute information, opinions and perspectives that have potential to influence decisions about a site's investigation and cleanup.

The public is encouraged to contact project staff at any time during the site's investigation and cleanup process with questions, comments, or requests for information.

This CP Plan may be revised due to changes in major issues of public concern identified in Section 3 or in the nature and scope of investigation and cleanup activities. Modifications may include additions to the site contact list and changes in planned citizen participation activities.

#### *Technical Assistance Grant*

NYSDEC must determine if the site poses a significant threat to public health or the environment. This determination generally is made using information developed during the investigation of the site, as described in Section 5.

If the site is determined to be a significant threat, a qualifying community group may apply for a Technical Assistance Grant (TAG). The purpose of a TAG is to provide funds to the qualifying group to obtain independent technical assistance. This assistance helps the TAG recipient to interpret and understand existing environmental information about the nature and extent of contamination related to the site and the development/implementation of a remedy.

An eligible community group must certify that its membership represents the interests of the community affected by the site, and that its members' health, economic well-being or enjoyment of the environment may be affected by a release or threatened release of contamination at the site.

As of the date the declaration (page 2) was signed by the NYSDEC project manager, **the significant threat determination for the site had not yet been made.**

To verify the significant threat status of the site, the interested public may contact the NYSDEC project manager identified in Appendix A.

For more information about TAGs, go online at <http://www.dec.ny.gov/regulations/2590.html>

Note: The table identifying the citizen participation activities related to the site's investigation and cleanup program follows on the next page:

Citizen Participation Activities	Timing of CP Activity(ies)
<b>Application Process:</b>	
<ul style="list-style-type: none"> <li>• Prepare site contact list</li> <li>• Establish document repository(ies)</li> </ul>	At time of preparation of application to participate in the BCP.
<ul style="list-style-type: none"> <li>• Publish notice in Environmental Notice Bulletin (ENB) announcing receipt of application and 30-day public comment period</li> <li>• Publish above ENB content in local newspaper</li> <li>• Mail above ENB content to site contact list</li> <li>• Conduct 30-day public comment period</li> </ul>	When NYSDEC determines that BCP application is complete. The 30-day public comment period begins on date of publication of notice in ENB. End date of public comment period is as stated in ENB notice. Therefore, ENB notice, newspaper notice, and notice to the site contact list should be provided to the public at the same time.
<b>After Execution of Brownfield Site Cleanup Agreement (BCA):</b>	
<ul style="list-style-type: none"> <li>• Prepare Citizen Participation (CP) Plan</li> </ul>	Before start of Remedial Investigation <b>Note:</b> Applicant must submit CP Plan to NYSDEC for review and approval within 20 days of the effective date of the BCA.
<b>Before NYSDEC Approves Remedial Investigation (RI) Work Plan:</b>	
<ul style="list-style-type: none"> <li>• Distribute fact sheet to site contact list about proposed RI activities and announcing 30-day public comment period about draft RI Work Plan</li> <li>• Conduct 30-day public comment period</li> </ul>	Before NYSDEC approves RI Work Plan. If RI Work Plan is submitted with application, public comment periods will be combined and public notice will include fact sheet. Thirty-day public comment period begins/ends as per dates identified in fact sheet.
<b>After Applicant Completes Remedial Investigation:</b>	
<ul style="list-style-type: none"> <li>• Distribute fact sheet to site contact list that describes RI results</li> </ul>	Before NYSDEC approves RI Report
<b>Before NYSDEC Approves Remedial Work Plan (RWP):</b>	
<ul style="list-style-type: none"> <li>• Distribute fact sheet to site contact list about draft RWP and announcing 45-day public comment period</li> <li>• Public meeting by NYSDEC about proposed RWP (if requested by affected community or at discretion of NYSDEC project manager)</li> <li>• Conduct 45-day public comment period</li> </ul>	Before NYSDEC approves RWP. Forty-five day public comment period begins/ends as per dates identified in fact sheet. Public meeting would be held within the 45-day public comment period.
<b>Before Applicant Starts Cleanup Action:</b>	
<ul style="list-style-type: none"> <li>• Distribute fact sheet to site contact list that describes upcoming cleanup action</li> </ul>	Before the start of cleanup action.
<b>After Applicant Completes Cleanup Action:</b>	
<ul style="list-style-type: none"> <li>• Distribute fact sheet to site contact list that announces that cleanup action has been completed and that NYSDEC is reviewing the Final Engineering Report</li> <li>• Distribute fact sheet to site contact list announcing NYSDEC approval of Final Engineering Report and issuance of Certificate of Completion (COC)</li> </ul>	At the time the cleanup action has been completed. <b>Note:</b> The two fact sheets are combined when possible if there is not a delay in issuing the COC.



### **3. Major Issues of Public Concern**

This section of the CP Plan identifies major issues of public concern that relate to the site. Additional major issues of public concern may be identified during the course of the site's investigation and cleanup process.

If subsurface remediation is required, major issues of community concern may be noise, odor, dust and/or truck traffic associated with removal of contaminated soil. However, these impacts will be mitigated through implementation of a Health and Safety Plan and Soil Management Plan approved by the Department, which will be designed to minimize these impacts. A Community Air Monitoring Plan will also be implemented to monitor dust and vapors to ensure the community is not impacted.

### **4. Site Information**

Appendix C contains a map identifying the location of the site.

#### *Site Description*

- Location – 47, 51 and 57 Eastern Boulevard
- Setting – Commercial
- Site size – .0528 acres
- Adjacent properties – residential, commercial

#### *History of Site Use, Investigation, and Cleanup*

Parkway Plaza was originally constructed in approximately 1957. Prior to construction of Parkway Plaza, which includes the BCP Site, the property consisted of vacant undeveloped land. In the late 1960's, a dry cleaner operation was located at 51 Eastern Blvd, which utilized perchloroethene (a/k/a tetrachloroethene, or PCE). This use led to site contamination. By 1980, when the Site was acquired by the Volunteer, all dry cleaner operations had ceased, and a non-dry cleaning coin operated laundromat replaced the former dry cleaner.

On January 22, 2001, the Volunteer entered the former dry cleaner portion of the plaza, with an address of 51 Eastern Blvd, and which consisted of only a 0.19 acre portion of larger 39 Eastern Boulevard plaza site, into the former New York State Voluntary Cleanup Program (VCP) upon discovery of the PCE contamination. This area included one building and the parking spots to the south of the building. The BCP Site now subject to the Brownfield Cleanup Agreement is larger because it includes the adjacent two restaurants.

Three bulk dry cleaning machines, located in the southern end of the building with the backs in the Alcove, were historically used by the dry cleaner tenant. The PCE used at the Site was stored in an approximate 100-gallon aboveground storage tank (AST), which was mounted on the roof of the former Parkway Cleaners building above the dry cleaning machines. A pipe came off the bottom of the tank, ran into the building behind the machines and terminated with a spigot. The solvent was added to the machines by filling a bucket from the spigot and pouring it into the machines.

Wastewater generated at the Parkway Plaza discharges into the municipal sanitary sewer system. An exterior sediment trap/sump that was connected to the sanitary sewer line was located immediately adjacent to the south side of the Alcove portion of the building. A hole in the concrete block wall of the Alcove portion of the building suggests that the dry cleaning equipment discharged into this sediment trap/sump. The walls of the sediment trap/sump were constructed of concrete block and this structure contained a soil bottom. The studies completed to date determined that the sediment trap/sump was a “source area” of the halogenated volatile organic compound (VOC) impact at the Site.

The AST was removed along with contaminated soil around the outside of the Alcove in 2001 during what is called an Interim Remedial Measure action. In addition, several rounds of bioremediation were implemented at the property boundary in an attempt to prevent off-Site migration of the PCE plume. An active system was installed in the Alcove area adjacent to the dry cleaner building. However, this work was unable to address further source material under the Alcove, which will be remediated pursuant to the remaining remedial action required on this Site.

## **5. Investigation and Cleanup Process**

### *Application*

The Applicant has applied for and been accepted into New York’s Brownfield Cleanup Program as a Volunteer. This means that the Applicant was not responsible for the disposal or discharge of the contaminants or whose ownership or operation of the site took place after the discharge or disposal of contaminants. The Volunteer must fully characterize the nature and extent of contamination onsite, and must conduct a “qualitative exposure assessment,” a process that characterizes the actual or potential exposures of people, fish and wildlife to contaminants on the site and to contamination that has migrated from the site.

The Applicant in its Application proposes that the site will be used for restricted commercial purposes.

To achieve this goal, the Applicant will conduct cleanup activities at the site with

oversight provided by NYSDEC. The Brownfield Cleanup Agreement executed by NYSDEC and the Applicant sets forth the responsibilities of each party in conducting these activities at the site.

### *Investigation*

The Applicant has completed a full site investigation before it entered into the BCP since this site is transitioning from the former Voluntary Cleanup Program (VCP) into the BCP. The Applicant has submitted an investigation report for the full site investigation. The remedial investigation was performed with NYSDEC oversight during the VCP.

The site investigation had several goals:

- 1) define the nature and extent of contamination in soil, surface water, groundwater and any other parts of the environment that may be affected;
- 2) identify the source(s) of the contamination;
- 3) assess the impact of the contamination on public health and the environment; and
- 4) provide information to support the development of a proposed remedy to address the contamination or the determination that cleanup is not necessary.

The remedial investigation report recommended that additional cleanup action is needed to address remaining contamination.

NYSDEC will use the information in the investigation report to determine if the site poses a significant threat to public health or the environment. If the site is a “significant threat,” it must be cleaned up using a remedy selected by NYSDEC from an analysis of alternatives prepared by the Applicant and approved by NYSDEC. If the site does not pose a significant threat, the Applicant may select the remedy from the approved analysis of alternatives.

### *Interim Remedial Measures*

An Interim Remedial Measure (IRM) is an action that can be undertaken at a site when a source of contamination or exposure pathway can be effectively addressed before the site investigation and analysis of alternatives are completed. If an IRM is likely to represent all or a significant part of the final remedy, NYSDEC will require a 30-day public comment period.

### *Remedy Selection*

Since the Applicant has recommended in its investigation report that remedial action is still needed to address site contamination, the Applicant will now develop a cleanup plan, officially called a “Remedial Work Plan”. The Remedial Work Plan describes the

Applicant's proposed remedy for addressing contamination related to the site.

When the Applicant submits a draft Remedial Work Plan for approval, NYSDEC would announce the availability of the draft plan for public review during a 45-day public comment period.

### *Cleanup Action*

NYSDEC will consider public comments, and revise the draft cleanup plan if necessary, before approving the proposed remedy. The New York State Department of Health (NYSDOH) must concur with the proposed remedy. After approval, the proposed remedy becomes the selected remedy. The selected remedy is formalized in the site Decision Document.

The Applicant may then design and perform the cleanup action to address the site contamination. NYSDEC and NYSDOH oversee the activities. When the Applicant completes cleanup activities, it will prepare a final engineering report that certifies that cleanup requirements have been achieved or will be achieved within a specific time frame. NYSDEC will review the report to be certain that the cleanup is protective of public health and the environment for the intended use of the site.

### *Certificate of Completion*

When NYSDEC is satisfied that cleanup requirements have been achieved or will be achieved for the site, it will approve the final engineering report. NYSDEC then will issue a Certificate of Completion (COC) to the Applicant. The COC states that cleanup goals have been achieved, and relieves the Applicant from future liability for site-related contamination, subject to certain conditions.

### *Site Management*

The purpose of site management is to ensure the safe reuse of the property if contamination will remain in place. Site management is the last phase of the site cleanup program. This phase begins when the COC is issued. Site management incorporates any institutional and engineering controls required to ensure that the remedy implemented for the site remains protective of public health and the environment. All significant activities are detailed in a Site Management Plan.

An *institutional control* is a non-physical restriction on use of the site, such as a deed restriction that would prevent or restrict certain uses of the property. An institutional control may be used when the cleanup action leaves some contamination that makes the site suitable for some, but not all uses.

An *engineering control* is a physical barrier or method to manage contamination. Examples include: caps, covers, barriers, fences, and treatment of water supplies.

Site management also may include the operation and maintenance of a component of the remedy, such as a system that pumps and treats groundwater. Site management continues until NYSDEC determines that it is no longer needed.

## **Appendix A - Project Contacts and Locations of Reports and Information**

### **Project Contacts**

For information about the site's investigation and cleanup program, the public may contact any of the following project staff:

#### **New York State Department of Environmental Conservation (NYSDEC):**

Timothy Schneider  
Project Manager  
NYSDEC Division of Environmental  
Remediation  
6274 East Avon-Lima Road  
Avon, NY 14414  
[Timothy.schneider@dec.ny.gov](mailto:Timothy.schneider@dec.ny.gov)

Regina Willis  
Citizen Participation Specialist  
NYSDEC  
6274 East Avon-Lima Road  
Avon, NY 14414  
[Regina.Willis@dec.ny.gov](mailto:Regina.Willis@dec.ny.gov)  
(585) 226-5324

#### **New York State Department of Health (NYSDOH):**

Christine Vooris  
NYSDOH Regional Chief  
547 River Street  
Empire State Plaza - Corning Tower  
Room 1787  
Albany, NY 12237  
Email: [bee@health.ny.gov](mailto:bee@health.ny.gov)  
Tel: (518) 402-7880

Justin Deming  
NYSDOH  
Empire State Plaza-Corning Tower  
Room 1787  
Albany, NY 12237  
Email: [bee@health.ny.gov](mailto:bee@health.ny.gov)  
Tel: (518) 402-7860

## **Locations of Reports and Information**

The facilities identified below are being used to provide the public with convenient access to important project documents:

Jenny Goodemote, Director  
Wood Library  
134 N. Main Street  
Canandaigua, NY 14424

Monday-Thursday	9am-9pm
Friday	9am-6pm
Saturday	10am-5pm
Sunday	1pm-4pm

## Appendix B - Site Contact List

Hon. Kristen Gillibrand U.S. Senate 780 Third Avenue, Suite 2601 New York, NY 10017	Hon. Charles Schumer U.S. Senate 780 Third Ave., Suite 2301 New York, NY 10017
Hon. Chris Collins U.S. House of Representatives 1117 Longworth House Office Building Washington, DC 20515	
<b>State Officials</b>	
Brian Kolb, Assemblyman LOB 933 Albany, NY 12248	Pamela Helming, Senator Legislative Office Building Room 946 Albany, NY 12247
<b>Local Town and County Officials</b>	
Ellen Polimeni The City of Canandaigua Mayor 190 Spencer Lane Canandaigua, NY 14424	Richard E. Brown Director of City Planning and Zoning 2 North Main Street Canandaigua, NY 14424
Mary A. Krause Ontario County Administrator 20 Ontario Street Canandaigua, NY 14424	David Forrest The City of Canandaigua City Council Manager 2 North Main Street Canandaigua, NY 14424
Nick Cutri City of Canandaigua Council 196 Spencer Lane Canandaigua, NY 14424	Regina Sousa County Department of Planning and Development 20 Ontario Street Canandaigua, NY 14424
Matthew J. Hoose County Clerk 20 Ontario Street Canandaigua, NY 14424	Nancy Abdallah City Clerk 2 North Main Street Canandaigua, NY 14424
Mary L. Beer Department of Public Health, Ontario County 3019 County Complex Dr. Canandaigua, NY 14424	



<b>Public Water Supplier</b>	
James P. Sprague Canandaigua Water Bureau, Water Supplier Director 205 Saltonstall Street Canandaigua, NY 14424	
<b>Local News Media</b>	
Daily Messenger Media Outlet 73 Buffalo St Canandaigua, NY 14424	
<b>Adjacent Property Owners</b>	
Twin Pine Associates NY LLC Adjacent Property Owner of 18 Eastern Blvd PO Box 1159 Deerfield, IL 60015	Western Union Adjacent Property Operator of 18 Eastern Blvd 18 Eastern Blvd Canandaigua, NY 14424
Walgreens Adjacent Property Operator of 18 Eastern Blvd 18 Eastern Blvd Canandaigua, NY 14424	Jeffrey E. Owren, PharmD Adjacent Property Operator of 18 Eastern Blvd 18 Eastern Blvd Canandaigua, NY 14424
Shepard Brothers Inc. Adjacent Property Owner of 20 Eastern Blvd 20 Eastern Blvd Canandaigua, NY 14424	Shepard Ford Adjacent Property Operator of 20 Eastern Blvd 20 Eastern Blvd Canandaigua, NY 14424
Top Line Auto Adjacent Property Operator of 20 Eastern Blvd 20 Eastern Blvd Canandaigua, NY 14424	Shepard Ford Adjacent Property Operator of 20 Eastern Blvd 20 Eastern Blvd Canandaigua, NY 14424
Shepard Brothers Inc. Adjacent Property Owner of 120 Eastern Blvd 20 Eastern Blvd Canandaigua, NY 14424	Shepard Brothers Inc. c/o Autozone Inc. Adjacent Property Owner of 130 Eastern Blvd DEPT 8700 Memphis, TN 38101
AutoZone Adjacent Property Operator of 130 Eastern Blvd 130 Eastern Blvd Canandaigua, NY 14424	Frant Corp. Adjacent Property Owner of 140 Eastern Blvd 3892 RILEYS RUN Canandaigua, NY 14424

Arby's Adjacent Property Operator of 140 Eastern Blvd 140 Eastern Blvd Canandaigua, NY 14424	Abbot's of Canandaigua Adjacent Property Owner of 150 Eastern Blvd 4060 Bordeaux Dr. Denver, NC 28037
Jasco Enterprises Inc Adjacent Property Operator of 150 Eastern Blvd 150 Eastern Blvd Canandaigua, NY 14424	160 Eastern Blvd LLC Adjacent Property Owner of 160 Eastern Blvd 2493 Roll Dr. San Diego, CA 92154
Denny's Adjacent Property Operator of 160 Eastern Blvd 160 Eastern Blvd Canandaigua, NY 14424	1258 Group, LLC Adjacent Property Owner of 170 Eastern Blvd 295 Main St Buffalo, NY 14203
Rite Aid Adjacent Property Operator of 170 Eastern Blvd 170 Eastern Blvd Canandaigua, NY 14424	Western Union Adjacent Property Operator of 170 Eastern Blvd 170 Eastern Blvd Canandaigua, NY 14424
Tricia M. Daum, RPh Adjacent Property Operator of 170 Eastern Blvd 170 Eastern Blvd Canandaigua, NY 14424	Dunkin Donuts Adjacent Property Operator of 170 Eastern Blvd 170 Eastern Blvd Canandaigua, NY 14424
CRT LIX, LLC Adjacent Property Owner of 176 Eastern Blvd 280 Merrimack St Methuen, MA 01844	King Traid Development, LLC Adjacent Property Owner of 15 Maur St 6060 Court Street Rd Syracuse, NY 13206
Canandaigua Lakefront LLC Adjacent Property Owner of 190 Lakeshore Dr. 1080 Pittsford-Victor Rd. Pittsford, NY 14534	David L. Genecco, Family Wealth Trust Adjacent Property Owner of 20 Maur St 1850 Rochester Rd Canandaigua, NY 14424
Pontillo's Pizzeria Adjacent Property Operator of 20 Maur St 20 Maur Street Canandaigua, NY 14424	Maur Street Realty LLC Adjacent Property Owner of 30 Maur St 415 W Main St. Rochester, NY 14608
Advantage Auto Stores Adjacent Property Operator of 30 Maur Street	Canandaigua Lakefront LLC Adjacent Property Owner of 40 Maur St 1080 Pittsford-Victor Rd.

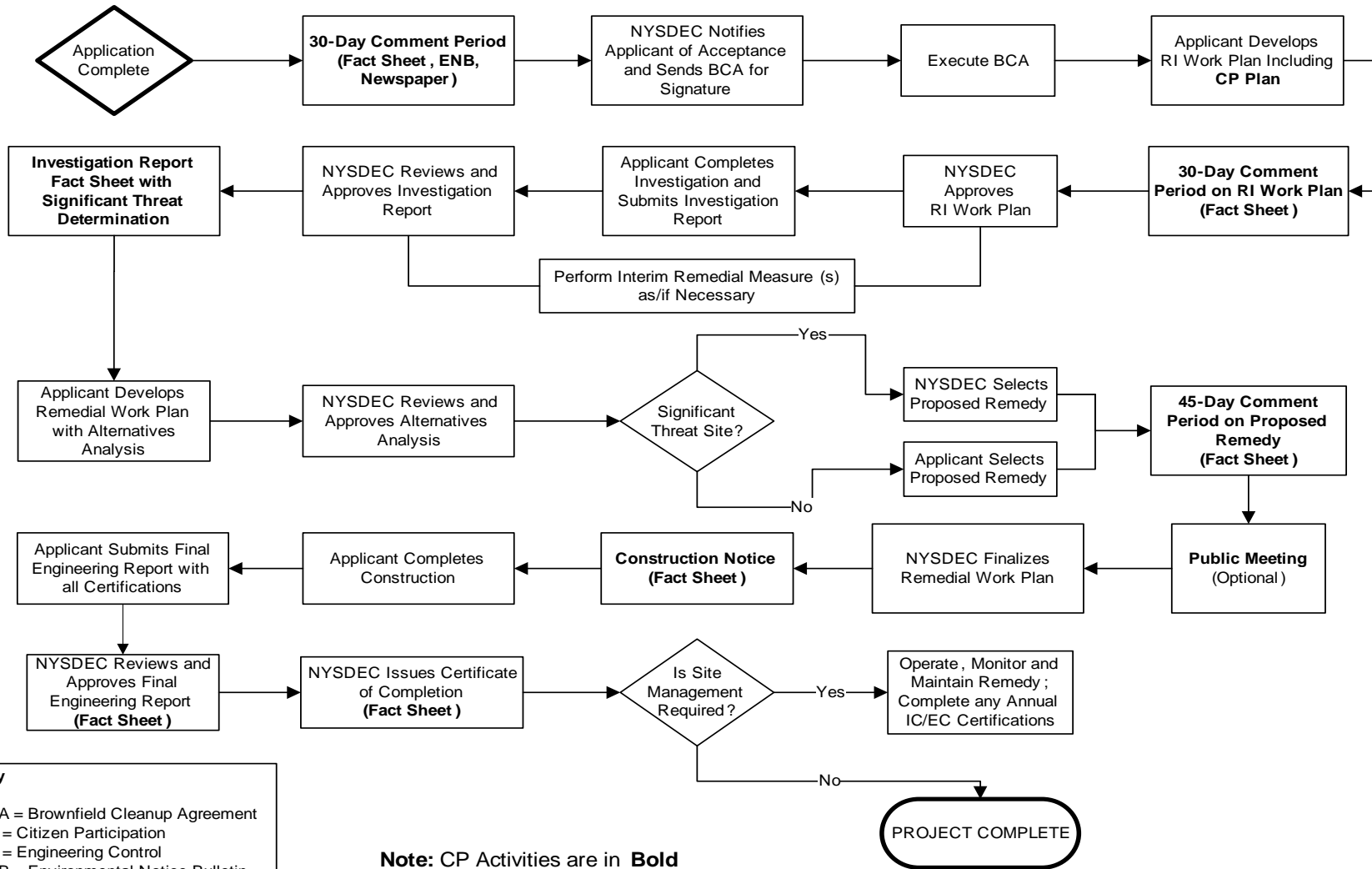
30 Maur St. Canandaigua, NY 14424	Pittsford, NY 14534
Hess Retail Stores LLC Adjacent Property Owner of 162 Lakeshore Dr. 1 Hess Plaza Woodbridge, NJ 07095	Canandaigua Lakefront LLC Adjacent Property Owner of 150 Lakeshore Dr. 1080 Pittsford-Victor Rd. Pittsford, NY 14534
City of Canandaigua Adjacent Property Owner of 154 Lakeshore Dr. 2 North Main Street Canandaigua, NY 14424	Canandaigua Lakefront LLC Adjacent Property Owner of 100 Lakeshore Dr. 1080 Pittsford-Victor Rd. Pittsford, NY 14534
McDonalds Real Estate Company Adjacent Property Owner of 17 Booth St 17 Booth St Canandaigua, NY 14424	Wegmans Enterprises, Inc. Wegmans Enterprises, Inc. Adjacent Property Owner of 15 Eastern Blvd PO Box 30844 Rochester, NY 14608
Parkway Plaza Adjacent Property Operator of 39 Eastern Blvd 39 Eastern Blvd Canandaigua, NY 14424	US Marine Corps Recruiting Adjacent Property Operator of 39 Eastern Blvd 115 Eastern Blvd Canandaigua, NY 14424
YoBerry Frozen Yogurt Adjacent Property Operator of 39 Eastern Blvd 113 Eastern Blvd Canandaigua, NY 14424	Wink Stegalls Adjacent Property Operator of 39 Eastern Blvd 109 Eastern Blvd Canandaigua, NY 14424
Vicki Nails Adjacent Property Operator of 39 Eastern Blvd 99 Eastern Blvd Canandaigua, NY 14424	Subway Restaurants Adjacent Property Operator of 39 Eastern Blvd 97 Eastern Blvd Canandaigua, NY 14424
Adecco Staffing Adjacent Property Operator of 39 Eastern Blvd 107 Eastern Blvd Canandaigua, NY 14424	Plaza Liquor Store Adjacent Property Operator of 39 Eastern Blvd 73 Eastern Blvd Canandaigua, NY 14424
H & R Block	Sherwin-Williams

Adjacent Property Operator of 39 Eastern Blvd 79 Eastern Blvd Canandaigua, NY 14424	Adjacent Property Operator of 39 Eastern Blvd 77 Eastern Blvd Canandaigua, NY 14424
Ryan's Wines and Spirits Adjacent Property Operator of 39 Eastern Blvd 73 Eastern Blvd Canandaigua, NY 14424	Smoker's Choice Adjacent Property Operator of 39 Eastern Blvd 63 Eastern Blvd Canandaigua, NY 14424
HUNT Real Estate ERA Adjacent Property Operator of 39 Eastern Blvd 59 Eastern Blvd Canandaigua, NY 14424	Sakura Adjacent Property Operator of 39 Eastern Blvd 57 Eastern Blvd Canandaigua, NY 14424
Great Wall Chinese Adjacent Property Operator of 39 Eastern Blvd 47 Eastern Blvd Canandaigua, NY 14424	Keybank Adjacent Property Operator of 39 Eastern Blvd 145 Eastern Blvd Canandaigua, NY 14424
KFC Adjacent Property Operator of 39 Eastern Blvd 135 Eastern Blvd Canandaigua, NY 14424	Dale H. Austin, RPh Adjacent Property Operator of 39 Eastern Blvd 91 Eastern Blvd Canandaigua, NY 14424
Lily's Consignment Shoppe Adjacent Property Operator of 39 Eastern Blvd 67 Eastern Blvd Canandaigua, NY 14424	McDonald's Adjacent Property Operator of 39 Eastern Blvd 17 Booth St Canandaigua, NY 14424

# Appendix C - Site Location Map



# Appendix D– Brownfield Cleanup Program Process



**Key**  
 BCA = Brownfield Cleanup Agreement  
 CP = Citizen Participation  
 EC = Engineering Control  
 ENB = Environmental Notice Bulletin  
 IC = Institutional Control  
 RI = Remedial Investigation

**Note:** CP Activities are in **bold**

