

C.T. MALE ASSOCIATES

Engineering, Surveying, Architecture, Landscape Architecture & Geology, D.P.C.

50 Century Hill Drive, Latham, NY 12110
518.786.7400 FAX 518.786.7299 www.ctmale.com



January 10, 2023

**Via Email*

Marnie Chancey, E.I.T.
Assistant Engineer, Division of Environmental Remediation
New York State Department of Environmental Conservation
Remedial Bureau B, Section D
Division of Environmental Remediation
625 Broadway, 12th Floor
Albany, New York 12233-7017
marnie.chancey@dec.ny.gov

**RE: *Progress Report #24
Allied Healthcare Products Site
Stuyvesant, Columbia County
BCP Site ID No.: C411020***

Dear Ms. Chancey:

This Progress Report has been prepared on behalf of Allied Healthcare Products, Inc. (the "Applicant") in accordance with the Brownfield Cleanup Agreement ("BCA"). Progress Reports will be submitted by the 10th day of each month.

Tasks Performed Since Last Report

- Drilling of the upper bedrock monitoring wells commenced on December 5, 2022 and was completed on December 8, 2022. Due to bedrock characteristics at both locations, 2-inch diameter PVC monitoring wells were installed to facilitate the collection of groundwater samples. This modification was approved by the NYSDEC on December 8, 2022. The total depth of RI-MW-09B and RI-MW-18B was installed at 63 feet bgs and 30 feet bgs, respectively. A horizontal and vertical survey was completed on December 20, 2022 to locate the horizontal and vertical elevation (location, top of steel casing, top of Schedule 40 PVC, and ground surface) at each newly installed upper bedrock monitoring well (see revised figure). Groundwater samples for laboratory analyses were collected from both monitoring wells on December 27, 2022. Investigative derived wastes from the drilling, monitoring well installations and monitoring well development activities were contained in non-hazardous labeled 55-gallon drums that were staged atop wooden pallets within Building A.
- Inspected and collected samples from the IRM Groundwater Treatment System.

Anticipated Work to be Performed in Upcoming Month

- Review preliminary groundwater analytical results from the bedrock monitoring well sampling and submit the analytical results for independent third party data validation.
- Submit Monthly IRM System Operations Report No. 6 (December 2022) to the NYSDEC Project Manager upon receipt of analytical results from the laboratory.

C.T. MALE ASSOCIATES

January 10, 2023
Marnie Chancey, E.I.T.
Page - 2

- Continue preparation of the Draft RI Report.
- Conduct the January 2023 Groundwater Treatment System inspection and sampling.

Approved Activity Modifications

Modification to drill and install upper bedrock monitoring wells was submitted on December 7, 2022. The proposed modification was approved by the NYSDEC Project manager on December 8, 2022.

Proposed Work Plans/Reports Pending NYSDEC Approval

- None.

Results of Sampling and Tests

- Monthly IRM System Operations Report No. 6 (December 2022) will be submitted to the NYSDEC Project Manager upon receipt of analytical sampling results from the laboratory.

Percentage of Project Completion

- ~60%.

Unresolved Delays Affecting Project Schedule

- None.

Citizen Participation Activities

- None.

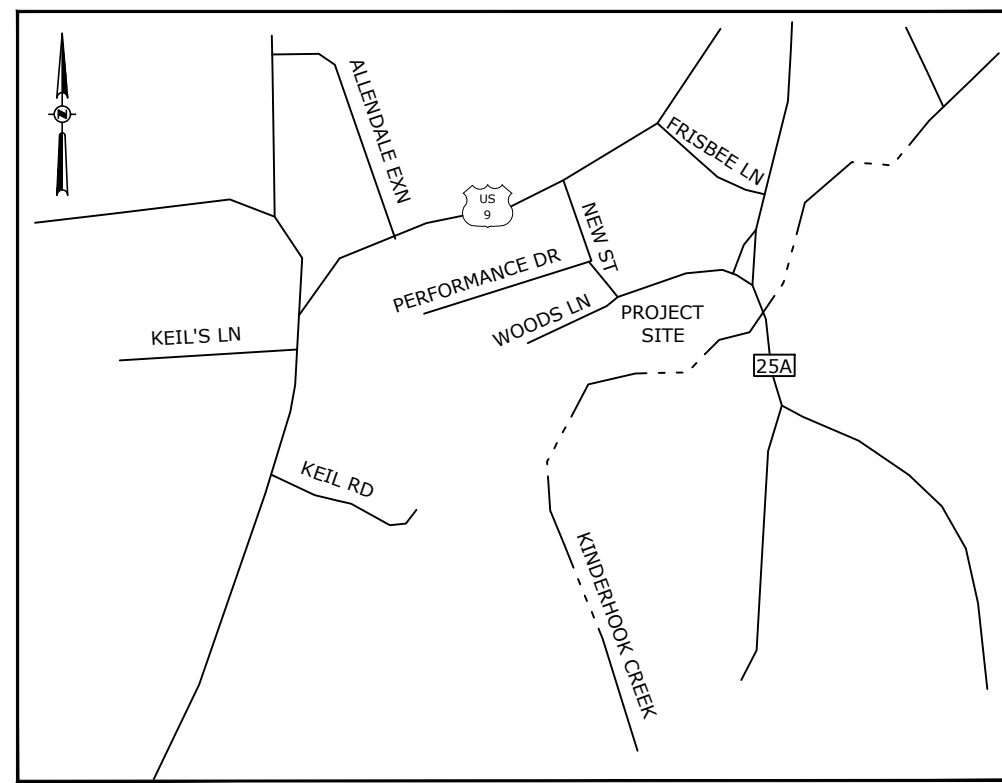
The next progress report will be submitted to the Department on or before February 10, 2023. Please do not hesitate to contact me should you require further information.

Respectfully submitted,
C.T. MALE ASSOCIATES

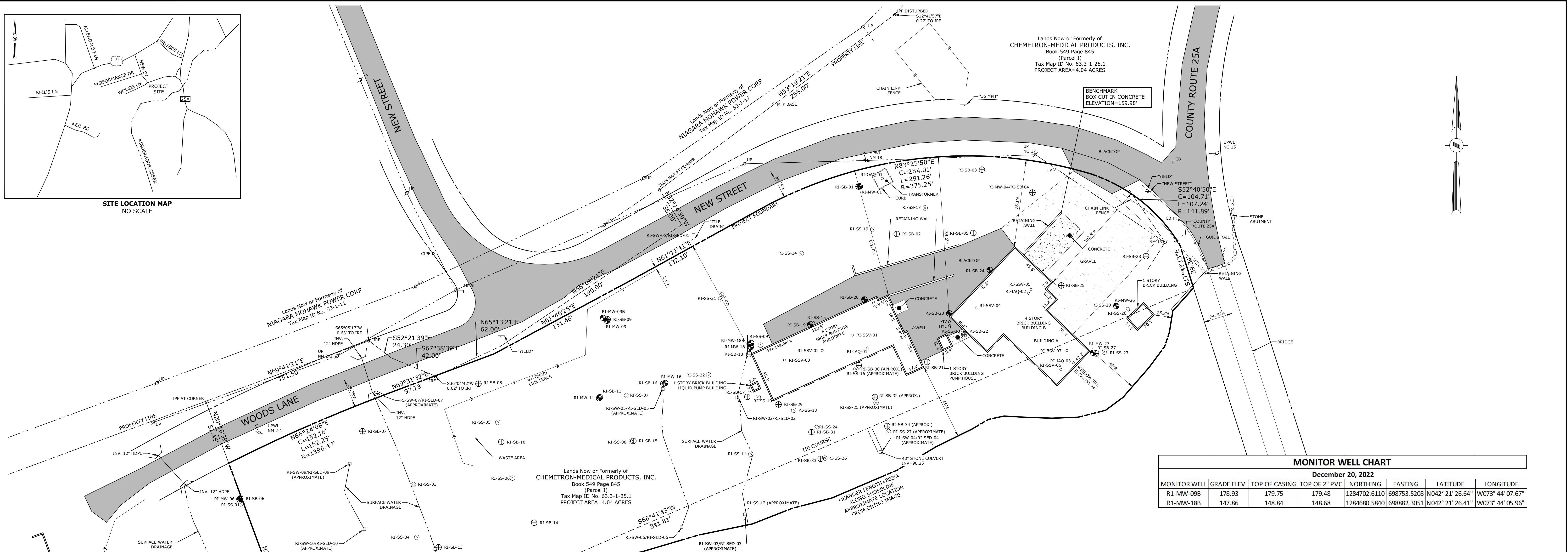


Environmental Scientist
Stephen Bieber, CHMM
Project Scientist

cc: Joe Ondrus, Allied Healthcare Products, Inc.
Michael Sterthous, Whiteman Osterman & Hanna LLP
Dan Tucholski, NYS Department of Health
Kirk Moline, P.G., C.T. Male Associates
Mark Williams, P.G., C.T. Male Associates



SITE LOCATION MAP NO SCALE



MONITOR WELL CHART							
December 20, 2022							
MONITOR WELL	GRADE ELEV.	TOP OF CASING	TOP OF 2" PVC	NORTHING	EASTING	LATITUDE	LONGITUDE
RI-MW-09B	178.93	179.75	179.48	1284702.6110	698753.5208	N042° 21' 26.64"	W073° 44' 07.67"
RI-MW-18B	147.86	148.84	148.68	1284680.5840	698882.3051	N042° 21' 26.41"	W073° 44' 05.96"

MONITOR WELL CHART							
September 30, 2021							
LOCATION ID	GRADE ELEVATION	TOP OF PVC	NORTHING	EASTING	LATITUDE	LONGITUDE	
RI-MW-01	173.32	174.91	1284816.9803	698976.9495	N 42°21'27.754"	W 73°44'04.685"	
RI-MW-04	163.40	164.53	1284811.6362	699127.2177	N 42°21'27.687"	W 73°44'02.684"	
RI-MW-06	157.77	158.35	1284544.7740	698436.8690	N 42°21'25.113"	W 73°44'11.910"	
RI-MW-09	177.95	180.48	1284700.1740	698756.8130	N 42°21'26.619"	W 73°44'07.631"	
RI-MW-11	168.90	171.25	1284632.6590	698749.9350	N 42°21'25.953"	W 73°44'07.730"	
RI-MW-16	166.42	171.52	1284645.8740	698807.5300	N 42°21'26.078"	W 73°44'06.962"	
RI-MW-18	147.62	149.44	1284677.3230	698881.9617	N 42°21'26.382"	W 73°44'05.966"	
RI-MW-26	155.13	156.32	1284712.9518	699200.2226	N 42°21'26.706"	W 73°44'01.723"	
RI-MW-27	151.12	152.80	1284672.2807	699180.0364	N 42°21'26.306"	W 73°44'01.997"	
RI-SB-01	173.34		1284816.8430	698975.8308	N 42° 21' 27.75"	W 73° 44' 04.70"	
RI-SB-02	165.26		1284775.5866	699009.0540	N 42° 21' 27.34"	W 73° 44' 04.26"	
RI-SB-03	167.24		1284831.5282	699083.2081	N 42° 21' 27.89"	W 73° 44' 03.27"	
RI-SB-04	159.95		1284811.6362	699127.2177	N 42° 21' 27.69"	W 73° 44' 02.68"	
RI-SB-05	164.21		1284776.4980	699075.7645	N 42° 21' 27.34"	W 73° 44' 03.37"	
RI-SB-06	157.74		1284545.4570	698437.5320	N 42°21'25.119"	W 73°44'11.907"	
RI-SB-07	162.05		1284604.0100	698543.9530	N 42°21'25.688"	W 73°44'10.477"	
RI-SB-08	167.57		1284645.3060	698644.9430	N 42°21'26.087"	W 73°44'09.127"	
RI-SB-09	177.93		1284701.2910	698757.3830	N 42°21'26.630"	W 73°44'07.623"	
RI-SB-10	164.60		1284594.6950	698664.7890	N 42°21'25.586"	W 73°44'08.869"	
RI-SB-11	169.05		1284633.5710	698750.6230	N 42°21'25.962"	W 73°44'07.721"	
RI-SB-12	137.19		1284476.8050	698511.0460	N 42°21'24.435"	W 73°44'10.931"	
RI-SB-13	118.79		1284503.0944	698610.2019	N 42°21'24.686"	W 73°44'09.607"	
RI-SB-14	126.83		1284524.3990	698693.4100	N 42°21'24.889"	W 73°44'08.496"	
RI-SB-15	154.35		1284595.5670	698779.7880	N 42°21'25.584"	W 73°44'07.337"	
RI-SB-16	169.49		1284645.2770	698805.8340	N 42°21'26.073"	W 73°44'06.984"	
RI-SB-17	148.40		1284633.8804	698878.9866	N 42°21'25.954"	W 73°44'06.011"	
RI-SB-18	147.19		1284670.9848	698880.6036	N 42°21'26.320"	W 73°44'05.985"	
RI-SB-19	148.27		1284696.7961	698933.7859	N 42°21'26.570"	W 73°44'05.274"	
RI-SB-20	148.74		1284718.5651	698980.9379	N 42°21'26.781"	W 73°44'04.643"	
RI-SB-21	160.08		1284664.2066	699035.6269	N 42°21'26.239"	W 73°44'03.921"	
RI-SB-22	160.90		1284688.3722	699067.9233	N 42°21'26.475"	W 73°44'03.488"	
RI-SB-23	161.01		1284706.5566	699054.7848	N 42°21'26.656"	W 73°44'03.661"	
RI-SB-24	161.12		1284744.3478	699090.0403	N 42°21'27.026"	W 73°44'03.187"	
RI-SB-25	156.28		1284730.8259	699152.3923	N 42°21'26.887"	W 73°44'02.358"	
RI-SB-26	152.57		1284709.7519	699209.7356	N 42° 21' 26.67"	W 73° 44' 01.60"	
RI-SB-27	150.93		1284671.6843	699182.6022	N 42°21'26.300"	W 73°44'01.963"	
RI-SB-28	156.67		1284756.2709	699226.1003	N 42°21'27.132"	W 73°44'01.373"	
RI-SB-29	150.31		1284627.2884	698906.2039	N 42°21'25.886"	W 73°44'05.650"	
RI-SB-30	N/A		1284661.2943	698976.1645	N 42° 21' 26.22"	W 73° 44' 04.71"	
RI-SB-31	134.94		1284603.3157	698934.8340	N 42°21'25.647"	W 73°44'05.271"	
RI-SB-33	118.71		1284580.0366	698942.8638	N 42°21'25.416"	W 73°44'05.167"	
RI-S5-01	156.95		1284540.0360	698439.3770	N 42°21'25.066"	W 73°44'11.878"	

RI-S5-02	133.05		1284465.6010	698508.7380	N 42°21'24.324"	W 73°44'10.963"
RI-S5-03	143.24		1284557.6348	698588.2994	N 42° 21' 25.23"	W 73° 44' 09.89"
RI-S5-04	129.99		1284511.6664	698591.2470	N 42°21'24.772"	W 73°44'09.858"
RI-S5-05	164.41		1284611.7290	698661.7420	N 42°21'25.754"	W 73°44'08.907"
RI-S5-06	154.54		1284563.1910	698674.5330	N 42°21'25.273"	W 73°44'08.743"
RI-S5-07	168.73		1284635.0110	698773.8640	N 42°21'25.974"	W 73°44'07.411"
RI-S5-08	154.94		1284595.0320	698777.1600	N 42°21'25.579"	W 73°44'07.372"
RI-S5-09	147.83		1284678.8674	698890.5035	N 42°21'26.397"	W 73°44'05.852"
RI-S5-10	148.54		1284633.4861	698888.4965	N 42°21'25.949"	W 73°44'05.885"
RI-S5-11	125.18		1284583.9775	698882.0318	N 42°21'25.460"	W 73°44'05.977"
RI-S5-12	N/A		1284536.7169	698879.3431	N 42° 21' 24.980"	W 73° 44' 06.02"
RI-S5-13	148.99		1284622.2623	698919.3721	N 42°21'25.835"	W 73°44'05.475"
RI-S5-14	165.75		1284758.4553	698926.0087	N 42°21'27.181"	W 73°44'05.370"
RI-S5-15	148.26		1284697.5407	698935.6137	N 42° 21' 26.58"	W 73° 44' 05.250"
RI-S5-16	N/A		1284657.9540	698973.5277	N 42° 21' 26.18"	W 73° 44' 04.75"
RI-S5-17	167.15		1284798.1764	699033.8371	N 42°21'27.563"	W 73°44'03.929"
RI-S5-18	160.98		1284689.2083	699067.0379	N 42° 21' 26.48"	W 73° 44' 03.50"
RI-S5-19	166.02		1284779.5218	698988.1892	N 42°21'27.383"	W 73°44'04.539"
RI-S5-20	155.06		1284713.2645	699199.4099	N 42°21'26.709"	W 73°44'01.734"
RI-S5-21	165.61		1284719.1408	698855.7498	N 42°21'26.798"	W 73°44'06.311"
RI-S5-22	161.70		1284652.9814	698845.3295	N 42°21'26.145"	W 73°44'06.457"
RI-S5-23	151.84		1284672.5362	699189.7345	N 42°21'26.308"	W 73°44'01.868"
RI-S5-24	136.02		1284607.1131	698939.1190	N 42°21'25.684"	W 73°44'05.214"
RI-S5-25	N/A		1284628.8348	698991.0126	N 42° 21' 25.89"	W 73° 44' 04.52"
RI-S5-26	118.29		1284580.6007	698946.4491	N 42°21'25.421"	W 73°44'05.119"
RI-S5V-01	148.08		1284687.3453	698970.3361	N 42°21'26.474"	W 73°44'04.788"
RI-S5V-02	148.07		1284674.1541	698944.1118	N 42°21'26.346"	W 73°44'05.139"
RI-S5V-03	148.12		1284665.8830	698911.4704	N 42°21'26.267"	W 73°44'05.575"
RI-S5V-04	159.39		1284711.2828	699078.7746	N 42° 21' 26.70"	W 73° 44' 03.34"
RI-S5V-05	159.72		1284727.2093	699125.9337	N 42° 21' 26.85"	W 73° 44' 02.71"
RI-S5V-06	149.34		1284657.7413	699151.8651	N 42° 21' 26.17"	W 73° 44' 02.37"
RI-S5V-07	149.38		1284674.1829	699157.3255	N 42°21'26.327"	W 73°44'02.299"
RI-IAQ-01	147.92		1284676.1642	698983.8555	N 42°21'26.362"	W 73°44'04.609"
RI-IAQ-02	159.77		1284724.0462	699123.8832	N 42° 21' 26.81"	W 73° 44' 02.75"
RI-IAQ-03	149.27		1284663.6626	699162.8963	N 42°21'26.223"	W 73°44'02.226"
RI-SW-1/SED-1	174.31		1284774.9170	698832.2130	N 42°21'27.351"	W 73°44'06.617"
RI-SW-2/SED-2	146.18		1284632.6176	698868.9282	N 42°21'25.942"	W 73°44'06.145"
RI-SW-3/SED-3	N/A		1284531.8128	698877.0392	N 42° 21' 24.95"	W 73° 44' 06.05"
RI-SW-4/SED-4	90.25		1284585.9105	698994.8867	N 42° 21' 25.47"	W 73° 44' 04.47"
RI-SW-5/SED-5	145.45		1284633.2630	698870.2244	N 42° 21' 25.95"	W 73° 44' 06.13"
RI-SW-6/SED-6	96.95		1284524.7740	698879.3550	N 42° 21' 24.88"	W 73° 44' 06.02"
RI-SW-7/SED-7	174.03		1284638.0482	698551.7288	N 42° 21' 26.02"	W 73° 44' 10.37"
RI-SW-8/SED-8	113.80		1284501.5348	698607.2775	N 42° 21' 24.67"	W 73° 44' 09.65"
RI-SW-9/SED-9	158.11		1284575.8261	698532.8665	N 42° 21' 25.41"	W 73° 44' 10.63"
RI-SW-10/SED-10	139.03		1284518.8216	698545.5114	N 42° 21' 24.85"	W 73° 44' 10.47"

MAP NOTES:

- Boundary information shown hereon was compiled from an actual field survey conducted during the month of December 2019. Monitor and sample points were field located on September 30, 2021.
- North orientation and coordinates are Grid North based on the New York State Plane Coordinate System, East Zone, NAD 83/2011 epoch 2010.00.
- Vertical datum shown hereon is NAVD 88 and was obtained from RTK GPS observations using the NYHS CORS as a base station.
- Objects shown on this drawing with a distance indicating how far that object is from a particular line, lie on the same side of the line that the offset distance is written.
- The location of underground improvements or encroachments, if any exist, or as shown hereon, are not certified. There may be underground utilities, the existence of which are not known to the undersigned. Size and location of all underground utilities and structures must be verified by the appropriate authorities. Dig Safety New York must be notified prior to conducting test borings, excavation and construction.
- This survey was prepared without the benefit of an up to date abstract of title or title report and is therefore subject to any easements, covenants, restrictions or any statement of fact that such documents may disclose.
- The deed for adjoining owner Robert V. Sitsler Book 869 Page 1470 recites being together with a right of way over lands of Chemetron Corporation (formerly Frisbee Manufacturing Company) generally used as a roadway to premises from the public highway.
- The right of way of Woods Lane, New Street and Kinderhook Street were created 1.5 rods (24.75 feet) from the existing centerline of pavement.

LEGEND:

- CIPF CAPPED IRON PIPE FOUND
- CB CATCH BASIN
- FP FLAGPOLE
- HYD HYDRANT
- IPIF IRON PIPE FOUND
- IPIF IRON ROD FOUND
- PIV POST INDICATOR VALVE
- △ TMON TRIANGULAR MONUMENT
- UP UTILITY POLE
- UPW UTILITY POLE WITH LIGHT
- RI-S5V-01 ○ SUB SLAB VAPOR
- RI-IAQ-01 ○ INDOOR AIR
- RI-OAQ-01 ○ OUTDOOR AIR
- RI-S5-01 ○ SURFACE SOIL
- RI-SB-01 ○ SUBSURFACE SOIL
- RI-MW-26 ○ MONITORING WELL
- RI-SW-01/RI-SED-01 □ SURFACE WATER/SEDIMENT



DATE	REVISIONS RECORD/DESCRIPTION	DRAFTER	CHECK	APPR.
03/30/22	ADD MAP NOTE 3	MPN	MPN	DEA
12/20/22	ADD UPPER BEDROCK WELLS AND MW CHART	KEC	MPN	DEA

UNAUTHORIZED ALTERATION OR ADDITION TO THIS DOCUMENT IS A VIOLATION OF THE NEW YORK STATE EDUCATION LAW.

© 2021 C.T. MALE ASSOCIATES

APPROVED: DBT

DRAFTED: DEB

CHECKED: DGD/MPN

PROJ. NO : 19-9379

SCALE : 1"=40'

DATE : OCT. 1, 2021

MONITOR EXHIBIT
PORTION OF LANDS NOW OR FORMERLY OF
CHEMETRON-MEDICAL PRODUCTS, INC.
NEW STREET

TOWN OF STUYVESANT COLUMBIA COUNTY, NEW YORK

C.T. MALE ASSOCIATES
Engineering, Surveying, Architecture, Landscape Architecture & Geology, D.P.C.
50 CENTURY HILL DRIVE, LATHAM, NY 518.786.7400
COBLESKILL, NY • GLENS FALLS, NY • Poughkeepsie, NY
JOHNSTOWN, NY • RED HOOK, NY • SYRACUSE, NY
www.ctmale.com

SHEET 1 OF 1
DWG. NO: 21-621