



**Department of
Environmental
Conservation**

Brownfield Cleanup Program
Citizen Participation Plan
for
First Prize Center Site, Site No. C401076
December 2018-Revised September 2020

First Prize Development Partners, LLC
c/o William Hoblock
8 Paddocks Circle
Saratoga Springs, New York

Contents

<u>Section</u>	<u>Page Number</u>
1. What is New York’s Brownfield Cleanup Program?	3
2. Citizen Participation Activities.....	3
3. Major Issues of Public Concern.....	10
4. Site Information.....	10
5. Investigation and Cleanup Process	11
Appendix A - Project Contacts and Locations of Reports and Information	15
Appendix B - Site Contact List.....	18
Appendix C - Site Location Map.....	19
Appendix D - Brownfield Cleanup Program Process.....	20

* * * * *

Note: The information presented in this Citizen Participation Plan was current as of the date of its approval by the New York State Department of Environmental Conservation. Portions of this Citizen Participation Plan may be revised during the site’s investigation and cleanup process.

Applicant: **First Prize Development Partners, LLC**
Site Name: **First Prize Center Site**
Site Address: **68 Exchange Street, Colonie, NY 12205 (Tax Parcel 53.16-1-23.1);
Russell Road, Albany, NY 12203 (Tax Parcel 53.60-1-1); Rear Russell Road,
Albany, NY 12203 (Tax Parcel 53.59-1-3.1)**
Site County: **Albany County**
Site Number: **C401076**

1. What is New York’s Brownfield Cleanup Program?

New York’s Brownfield Cleanup Program (BCP) works with private developers to encourage the voluntary cleanup of contaminated properties known as “brownfields” so that they can be reused and developed. These uses include recreation, housing, and business.

A *brownfield* is any real property that is difficult to reuse or redevelop because of the presence or potential presence of contamination. A brownfield typically is a former industrial or commercial property where operations may have resulted in environmental contamination. A brownfield can pose environmental, legal, and financial burdens on a community. If a brownfield is not addressed, it can reduce property values in the area and affect economic development of nearby properties.

The BCP is administered by the New York State Department of Environmental Conservation (NYSDEC) which oversees Applicants who conduct brownfield site investigation and cleanup activities. An Applicant is a person who has requested to participate in the BCP and has been accepted by NYSDEC. The BCP contains investigation and cleanup requirements, ensuring that cleanups protect public health and the environment. When NYSDEC certifies that these requirements have been met, the property can be reused or redeveloped for the intended use.

For more information about the BCP, go online at:
<http://www.dec.ny.gov/chemical/8450.html> .

2. Citizen Participation Activities

Why NYSDEC Involves the Public and Why It Is Important

NYSDEC involves the public to improve the process of investigating and cleaning up contaminated sites, and to enable citizens to participate more fully in decisions that affect their health, environment, and social well-being. NYSDEC provides opportunities for citizen involvement and encourages early two-way communication with citizens before decision makers form or adopt final positions.

Involving citizens affected and interested in site investigation and cleanup programs is important for many reasons. These include:

- Promoting the development of timely, effective site investigation and cleanup programs that protect public health and the environment
- Improving public access to, and understanding of, issues and information related to a particular site and that site's investigation and cleanup process
- Providing citizens with early and continuing opportunities to participate in NYSDEC's site investigation and cleanup process
- Ensuring that NYSDEC makes site investigation and cleanup decisions that benefit from input that reflects the interests and perspectives found within the affected community
- Encouraging dialogue to promote the exchange of information among the affected/interested public, State agencies, and other interested parties that strengthens trust among the parties, increases understanding of site and community issues and concerns, and improves decision making.

This Citizen Participation (CP) Plan provides information about how NYSDEC will inform and involve the public during the investigation and cleanup of the site identified above. The public information and involvement program will be carried out with assistance, as appropriate, from the Applicant.

Project Contacts

Appendix A identifies NYSDEC project contact(s) to whom the public should address questions or request information about the site's investigation and cleanup program. The public's suggestions about this CP Plan and the CP program for the site are always welcome. Interested people are encouraged to share their ideas and suggestions with the project contacts at any time.

Locations of Reports and Information

The locations of the reports and information related to the site's investigation and cleanup program also are identified in Appendix A. These locations provide convenient access to important project documents for public review and comment. Some documents may be placed on the NYSDEC web site. If this occurs, NYSDEC will inform the public in fact sheets distributed about the site and by other means, as appropriate.

Site Contact List

Appendix B contains the site contact list. This list has been developed to keep the community informed about, and involved in, the site's investigation and cleanup process. The site contact list will be used periodically to distribute fact sheets that provide updates about the status of the project. These will include notifications of upcoming activities at the site (such as fieldwork), as well as availability of project documents and announcements about public comment periods.

The site contact list includes, at a minimum:

- chief executive officer and planning board chairperson of each county, city, town and village in which the site is located;
- residents, owners, and occupants of the site and properties adjacent to the site;
- the public water supplier which services the area in which the site is located;
- any person who has requested to be placed on the site contact list;
- the administrator of any school or day care facility located on or near the site for purposes of posting and/or dissemination of information at the facility;
- location(s) of reports and information.

The site contact list will be reviewed periodically and updated as appropriate. Individuals and organizations will be added to the site contact list upon request. Such requests should be submitted to the NYSDEC project contact(s) identified in Appendix A. Other additions to the site contact list may be made at the discretion of the NYSDEC project manager, in consultation with other NYSDEC staff as appropriate.

Note: The first site fact sheet (usually related to the draft Remedial Investigation Work Plan) is distributed both by paper mailing through the postal service and through DEC Delivers, its email listserv service. The fact sheet includes instructions for signing up with the appropriate county listserv to receive future notifications about the site. See <http://www.dec.ny.gov/chemical/61092.html> .

Subsequent fact sheets about the site will be distributed exclusively through the listserv, except for households without internet access that have indicated the need to continue to receive site information in paper form. Please advise the NYSDEC site project manager identified in Appendix A if that is the case. Paper mailings may continue during the investigation and cleanup process for some sites, based on public interest and need.

CP Activities

The table at the end of this section identifies the CP activities, at a minimum, that have been and will be conducted during the site's investigation and cleanup program. The flowchart in Appendix D shows how these CP activities integrate with the site investigation and cleanup process. The public is informed about these CP activities through fact sheets and notices distributed at significant points during the program. Elements of the investigation and cleanup process that match up with the CP activities are explained briefly in Section 5.

- **Notices and fact sheets** help the interested and affected public to understand contamination issues related to a site, and the nature and progress of efforts to investigate and clean up a site.
- **Public forums, comment periods and contact with project managers** provide opportunities for the public to contribute information, opinions and perspectives that have potential to influence decisions about a site's investigation and cleanup.

The public is encouraged to contact project staff at any time during the site's investigation and cleanup process with questions, comments, or requests for information.

This CP Plan may be revised due to changes in major issues of public concern identified in Section 3 or in the nature and scope of investigation and cleanup activities. Modifications may include additions to the site contact list and changes in planned citizen participation activities.

Technical Assistance Grant

NYSDEC must determine if the site poses a significant threat to public health or the environment. This determination generally is made using information developed during the investigation of the site, as described in Section 5.

If the site is determined to be a significant threat, a qualifying community group may apply for a Technical Assistance Grant (TAG). The purpose of a TAG is to provide funds to the qualifying group to obtain independent technical assistance. This assistance helps the TAG recipient to interpret and understand existing environmental information about the nature and extent of contamination related to the site and the development/implementation of a remedy.

An eligible community group must certify that its membership represents the interests of the community affected by the site, and that its members' health, economic well-being or enjoyment of the environment may be affected by a release or threatened release of contamination at the site.

As of the date the declaration (page 2) was signed by the NYSDEC project manager, the significant threat determination for the site had not yet been made.

To verify the significant threat status of the site, the interested public may contact the NYSDEC project manager identified in Appendix A.

For more information about TAGs, go online at <http://www.dec.ny.gov/regulations/2590.html>

Note: The table identifying the citizen participation activities related to the site's investigation and cleanup program follows on the next page:

Citizen Participation Activities	Timing of CP Activity(ies)
Application Process:	
<ul style="list-style-type: none"> • Prepare site contact list • Establish document repository(ies) 	At time of preparation of application to participate in the BCP.
<ul style="list-style-type: none"> • Publish notice in Environmental Notice Bulletin (ENB) announcing receipt of application and 30-day public comment period • Publish above ENB content in local newspaper • Mail above ENB content to site contact list • Conduct 30-day public comment period 	When NYSDEC determines that BCP application is complete. The 30-day public comment period begins on date of publication of notice in ENB. End date of public comment period is as stated in ENB notice. Therefore, ENB notice, newspaper notice, and notice to the site contact list should be provided to the public at the same time.
After Execution of Brownfield Site Cleanup Agreement (BCA):	
<ul style="list-style-type: none"> • Prepare Citizen Participation (CP) Plan 	Before start of Remedial Investigation Note: Applicant must submit CP Plan to NYSDEC for review and approval within 20 days of the effective date of the BCA.
Before NYSDEC Approves Remedial Investigation (RI) Work Plan:	
<ul style="list-style-type: none"> • Distribute fact sheet to site contact list about proposed RI activities and announcing 30-day public comment period about draft RI Work Plan • Conduct 30-day public comment period 	Before NYSDEC approves RI Work Plan. If RI Work Plan is submitted with application, public comment periods will be combined and public notice will include fact sheet. Thirty-day public comment period begins/ends as per dates identified in fact sheet.
After Applicant Completes Remedial Investigation:	
<ul style="list-style-type: none"> • Distribute fact sheet to site contact list that describes RI results 	Before NYSDEC approves RI Report
Before NYSDEC Approves Remedial Work Plan (RWP):	
<ul style="list-style-type: none"> • Distribute fact sheet to site contact list about draft RWP and announcing 45-day public comment period • Public meeting by NYSDEC about proposed RWP (if requested by affected 	Before NYSDEC approves RWP. Forty-five day public comment period begins/ends as per dates identified in fact sheet. Public meeting would be held within the 45-day public comment period.

Citizen Participation Activities	Timing of CP Activity(ies)
community or at discretion of NYSDEC project manager) • Conduct 45-day public comment period	
Before Applicant Starts Cleanup Action:	
• Distribute fact sheet to site contact list that describes upcoming cleanup action	Before the start of cleanup action.
After Applicant Completes Cleanup Action:	
• Distribute fact sheet to site contact list that announces that cleanup action has been completed and that NYSDEC is reviewing the Final Engineering Report • Distribute fact sheet to site contact list announcing NYSDEC approval of Final Engineering Report and issuance of Certificate of Completion (COC)	At the time the cleanup action has been completed. Note: The two fact sheets are combined when possible if there is not a delay in issuing the COC.

3. Major Issues of Public Concern

At this time, there are no known issues of public concern. Additional major issues of public concern may be identified during the course of the Site's investigation and cleanup process. If issues are identified, the public will be kept informed.

When subsurface remediation commences, major issues of community concern may be noise, odor, dust and/or truck traffic associated with removal of contaminated soil. However, these impacts will be mitigated through implementation of a Health and Safety Plan and Soil Management Plan approved by the Department, which will be designed to minimize these impacts. A Community Air Monitoring Plan will also be implemented to monitor dust and vapors to ensure the community is not impacted.

4. Site Information

Appendix C contains a map identifying the location of the site.

Site Description

- **Location - 68 Exchange Street, Colonie, NY 12205; Russell Road, Albany, NY 12203; Rear Russell Road, Albany, NY 12203**
- **Setting - Commercial**
- **Site size – 32.09 acres**
- **Adjacent properties – residential, commercial, industrial**

History of Site Use, Investigation, and Cleanup

The main large building ("Main Building") on the Site was historically used as a slaughterhouse and meat packing plant by a company named Tobin Packing Company. This facility included cooler and freezer space, boiler room, laboratory, smoke rooms, warehouse space, wastewater treatment plant building. etc. On the southeast end of the main building is the former machine shop, hog pen area, and "cookers" room (i.e. where inedible waste was rendered). A separate garage building was used by Tobin for the storage and maintenance of their trucks and is the location where it may have used some degreasers and lubricating oils.

Two incinerators were operated on site. The primary incinerator, which is no longer present on Site, was located northwest of the main building, and used from the 1920's (early years of operation) up to the 1960's (exact dates unknown) to burn paper and wood refuse. Allegedly, historic complaints were received at that time as a result of the soot created by these operations. The ash/coal was reportedly disposed of in an open

field area northwest of the main building. While there are reports that the coal/ash was removed, there is no indication of how much, when, or where the disposal occurred. A smaller incinerator was reportedly located in the former wastewater treatment plant building. Its exact use was not able to be determined, but it may have been used to incinerate hog carcasses to create an organic potash.

Goodyear Tire and Rubber Co. leased the garage building beginning in 1985 until recently. Rubber dust from their operation was collected in a cyclone dust collector and Goodyear allegedly had an air emission permit for this operation. Rubber dust was collected in hoppers and was allegedly disposed of off-site. The dust was vacuumed out of the hoppers at a rate of 3 to 4 full hoppers per day. Waste oil was generated on site from Goodyear trucks, which was stored in drums inside the building, and transported off-site. Mechanical parts were cleaned in a self-contained Safety Kleen solvent sink maintained by Safety Kleen. Several other tenants began conducting auto repair operations, vehicle painting, and had offices, or stored materials in the garage in 1987.

Due to the large size of the former industrial facility, space was used by a large number of tenants as warehouse space, office space, and a recording studio. For example, the former hog pens (which were used to house hogs before they were slaughtered) were used by McNar Industries for storage of various equipment and parts. After Tobin's departure, the wastewater building was used as a cement plant beginning in approximately 1986. At the time of the July 2004 last site historic use investigation called a Phase I Site Assessment, the property was occupied by approximately 30 tenants. Portions of the main building and other structures on site were used for office space, cold storage, commercial businesses, file and equipment storage, and truck and car repair and/or storage. There are still 9 tenants on the site, however, none of these tenants used the main on-site historic plant building. Most of these tenants use the site for vehicle storage (3 for car storage, 2 for personal car storage, 3 for trailers), one tenant used the site for clean pipe storage and distribution, and the final tenant for art selling and framing.

5. Investigation and Cleanup Process

Application

The Applicant has applied for and been accepted into New York's Brownfield Cleanup Program as a volunteer. This means that the Applicant was not responsible for the disposal or discharge of the contaminants or whose ownership or operation of the site took place after the discharge or disposal of contaminants. The Volunteer must fully characterize the nature and extent of contamination onsite, and must conduct a "qualitative exposure assessment," a process that characterizes the actual or potential exposures of people, fish and wildlife to contaminants on the site and to contamination that has migrated from the site.

The Applicant in its Application proposes that the site will likely be used for restricted purposes. The Remedial Investigation Report will state the planned remedial goal.

To achieve this goal, the Applicant will conduct cleanup activities at the site with oversight provided by NYSDEC. The Brownfield Cleanup Agreement executed by NYSDEC and the Applicant sets forth the responsibilities of each party in conducting these activities at the site.

Investigation

The Applicant will conduct an investigation of the site officially called a “remedial investigation” (RI). This investigation will be performed with NYSDEC oversight. The Applicant must develop a remedial investigation workplan, which is subject to public comment.

The site investigation has several goals:

- 1) define the nature and extent of contamination in soil, surface water, groundwater and any other parts of the environment that may be affected;
- 2) identify the source(s) of the contamination;
- 3) assess the impact of the contamination on public health and the environment;
and
- 4) provide information to support the development of a proposed remedy to address the contamination or the determination that cleanup is not necessary.

The Applicant submits a draft “Remedial Investigation Work Plan” to NYSDEC for review and approval. NYSDEC makes the draft plan available to the public review during a 30-day public comment period.

Interim Remedial Measures

An Interim Remedial Measure (IRM) is an action that can be undertaken at a site when a source of contamination or exposure pathway can be effectively addressed before the site investigation and analysis of alternatives are completed. If an IRM is likely to represent all or a significant part of the final remedy, NYSDEC will require a 30-day public comment period.

Remedy Selection

When the investigation of the site has been determined to be complete, the project likely would proceed in one of two directions:

1. The Applicant may recommend in its investigation report that no action is necessary at the site. In this case, NYSDEC would make the investigation report available for public comment for 45 days. NYSDEC then would complete its review, make any necessary revisions, and, if appropriate, approve the investigation report. NYSDEC would then issue a “Certificate of Completion” (described below) to the Applicant.

or

2. The Applicant may recommend in its investigation report that action needs to be taken to address site contamination. After NYSDEC approves the investigation report, the Applicant may then develop a cleanup plan, officially called a “Remedial Work Plan”. The Remedial Work Plan describes the Applicant’s proposed remedy for addressing contamination related to the site.

When the Applicant submits a draft Remedial Work Plan for approval, NYSDEC would announce the availability of the draft plan for public review during a 45-day public comment period.

Cleanup Action

NYSDEC will consider public comments, and revise the draft cleanup plan if necessary, before approving the proposed remedy. The New York State Department of Health (NYSDOH) must concur with the proposed remedy. After approval, the proposed remedy becomes the selected remedy. The selected remedy is formalized in the site Decision Document.

The Applicant may then design and perform the cleanup action to address the site contamination. NYSDEC and NYSDOH oversee the activities. When the Applicant completes cleanup activities, it will prepare a final engineering report that certifies that cleanup requirements have been achieved or will be achieved within a specific time frame. NYSDEC will review the report to be certain that the cleanup is protective of public health and the environment for the intended use of the site.

Certificate of Completion

When NYSDEC is satisfied that cleanup requirements have been achieved or will be achieved for the site, it will approve the final engineering report. NYSDEC then will issue a Certificate of Completion (COC) to the Applicant. The COC states that cleanup goals have been achieved, and relieves the Applicant from future liability for site-related contamination, subject to certain conditions. The Applicant would be eligible to redevelop the site after it receives a COC.

Site Management

The purpose of site management is to ensure the safe reuse of the property if contamination will remain in place. Site management is the last phase of the site cleanup program. This phase begins when the COC is issued. Site management incorporates any institutional and engineering controls required to ensure that the remedy implemented for the site remains protective of public health and the environment. All significant activities are detailed in a Site Management Plan.

An *institutional control* is a non-physical restriction on use of the site, such as a deed restriction that would prevent or restrict certain uses of the property. An institutional control may be used when the cleanup action leaves some contamination that makes the site suitable for some, but not all uses.

An *engineering control* is a physical barrier or method to manage contamination. Examples include: caps, covers, barriers, fences, and treatment of water supplies.

Site management also may include the operation and maintenance of a component of the remedy, such as a system that pumps and treats groundwater. Site management continues until NYSDEC determines that it is no longer needed.

**Appendix A -
Project Contacts and Locations of Reports and Information**

Project Contacts

For information about the site's investigation and cleanup program, the public may contact any of the following project staff:

New York State Department of Environmental Conservation (NYSDEC):

Christopher O' Neill, P.E.
NYSDEC Project Manager
NYS Department of Environmental Conservation
Region 4 Office
1130 North Westcott Road
Schenectady, New York 12306-2014
Phone: (518) 357-2394
Email: Christopher.Oneill@dec.ny.gov

Stephen Repsher
NYSDEC Project Attorney
NYS Department of Environmental Conservation
Region 4 Office
1130 North Westcott Road
Schenectady, New York 12306-2014
Phone: (518) 357-2048
Email: Stephen.Repsher@dec.ny.gov

Andrew Fleck, P.E., Regional Remediation Engineer
NYS Department of Environmental Conservation
Region 4 Office
1130 North Westcott Road
Schenectady, NY 12306
Phone: (518) 357-2045
Email: Andrew.Fleck@dec.ny.gov

Anthony Luisi, Regional Attorney
NYS Department of Environmental Conservation
Region 4 Office
1130 North Westcott Road
Schenectady, NY 12306
Phone: (518) 357-2048
Email: Anthony.Luisi@dec.ny.gov

New York State Department of Health (NYSDOH):

Steven G. Berninger
NYS DOH Bureau of Environmental
Exposure Investigation
Empire State Plaza
Corning Tower, Rm 1717
Albany, New York 12237
Phone: (518) 402-0443
Email: BEEI@health.ny.gov

Justin Deming, Public Health Specialist
NYS DOH Bureau of Environmental
Exposure Investigation
Empire State Plaza
Corning Tower, Room 1787
Albany, NY 12237
Phone: (518) 402-7860
E-mail: BEEI@health.ny.gov

Christine Vooris
Bureau Director
NYS DOH Bureau of Environmental
Exposure Investigation
Empire State Plaza
Corning Tower, Room 1787
Albany, New York 12237
Phone: (518) 402-7860
Email: BEEI@health.ny.gov

Locations of Reports and Information

The facilities identified below are being used to provide the public with convenient access to important project documents:

Mary Coon, Branch Manager
Pine Hills Public Library
517 Western Avenue

Albany, NY 12203
(518) 482-7911

Hours:

Monday	12pm-8pm
Tuesday	10am-6pm
Wednesday	12pm-8pm
Thursday	12pm-6pm
Friday	12pm-6pm
Saturday	12pm-5pm
Sunday	Closed

William K. Stanford
Town of Colonie Public Library
629 Albany shaker Road
Loudonville, NY 12211

Hours:

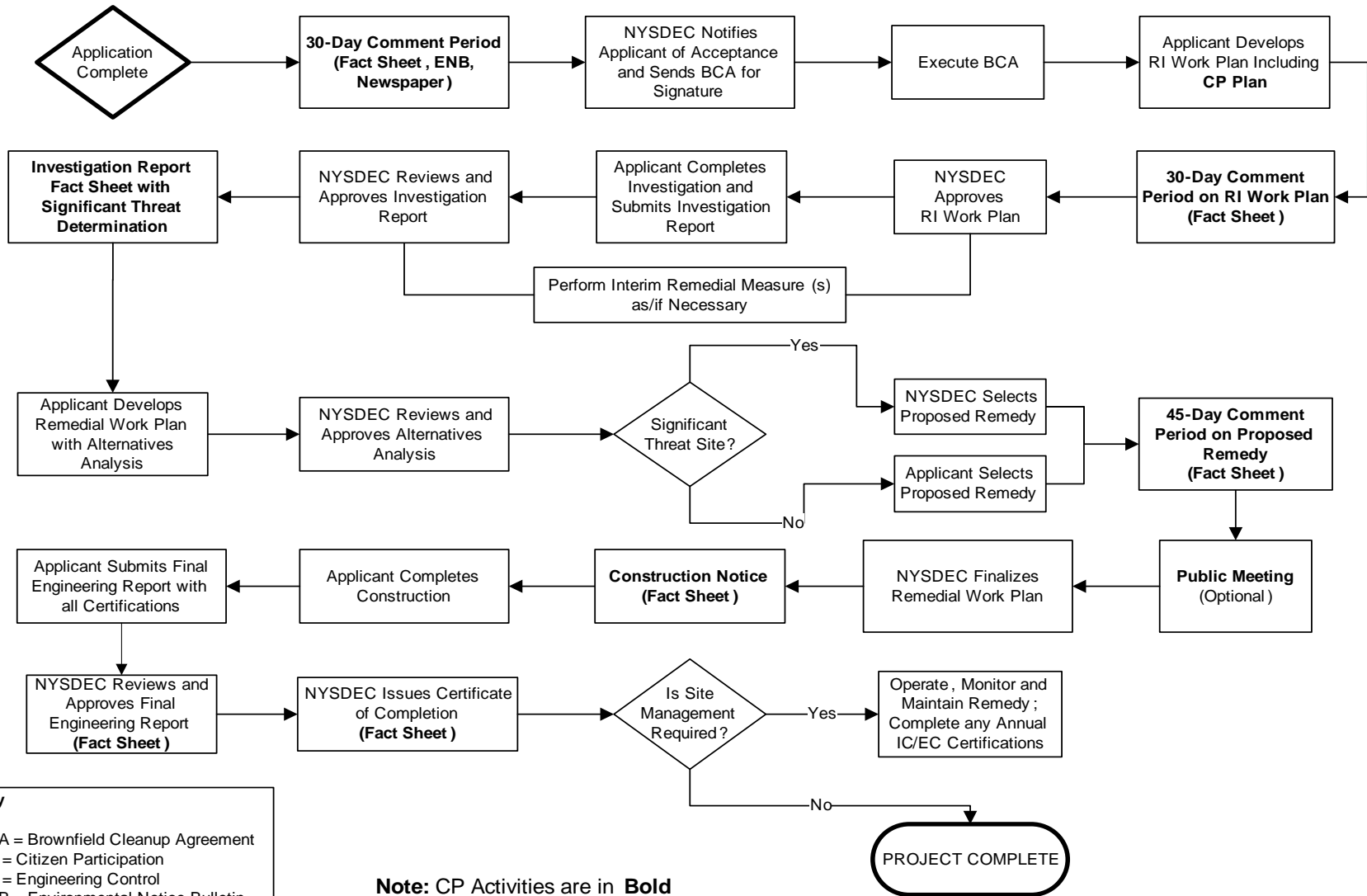
Mon-Thursday	9am-8pm
Friday	9am-6pm
Saturday	9am-5pm
Sunday	1pm-5pm

Appendix B - Site Contact List

Local Town and County Officials	
Dominic Rigosu Albany County Planning and Land Use 449 New Salam Road Voorheesville, NY 12186	Kathy M. Sheehan City of Albany Mayor 24 Eagle Street Albany, NY 12205
Brad Glass City of Albany Planning and Zoning 200 Henry Johnson Blvd Albany, NY 12210	Paula Mahan Town of Colonie Supervisor 534 Loudon Road Latham, NY 12110
Peter Stuto Town of Colonie Planning Board Chairman 347 Old Niskayuna Road Latham, NY 12110	Daniel P. McCoy Albany County Executive 112 State Street, Room 1200 Albany, NY 12207
Public Water Supplier	
Joseph E. Coffey Jr. City of Albany Public Water Supply Commissioner 10 N. Enterprise Dr. Albany, NY 12210	John Frazer Town of Colonie - Latham Water District 347 Old Niskayuna Road Latham, NY 12210
Local News Media	
Times Union City of Albany Media Outlet Box 15000, News Plaza Albany, NY 12212	Spotlight News Town of Colonie Media Outlet 341 Delaware Ave Delmar, NY 12054
Adjacent Property Owners Is CONFIDENTIAL	



Appendix D– Brownfield Cleanup Program Process



Key
 BCA = Brownfield Cleanup Agreement
 CP = Citizen Participation
 EC = Engineering Control
 ENB = Environmental Notice Bulletin
 IC = Institutional Control
 RI = Remedial Investigation

Note: CP Activities are in **Bold**