



Impact Environmental Engineering Geology, PLLC

170 Keyland Court | Bohemia | NY | 11716 | 631.269.8800 welcome to solid ground...
 www.impactenvironmental.com

DAILY STATUS REPORT #11

Prepared By: Marius Sidlauskas

WEATHER	Snow	Rain	Overcast	Partly Cloudy	Bright Sun	X
TEMP.	< 32	32-50	50-70	X	70-85	>85

IEC Project No:	15514	NYSDEC BCP Site No:	C360211	Date:	10/18/2022
Project:	60 McLean Avenue, Yonkers, NY				

Consultant: Impact Environmental Engineering and Geology, PLLC (IEEG) Time On: 7:00 Time Out: 3:00	Personnel On Site: Environmental Supervisor – Marius Sidlauskas (IEEG) Foreman – Javier Velasquez (SNL Construction) Demo Contractor – Frank Mazzurco (D-Best Industries)
--	---

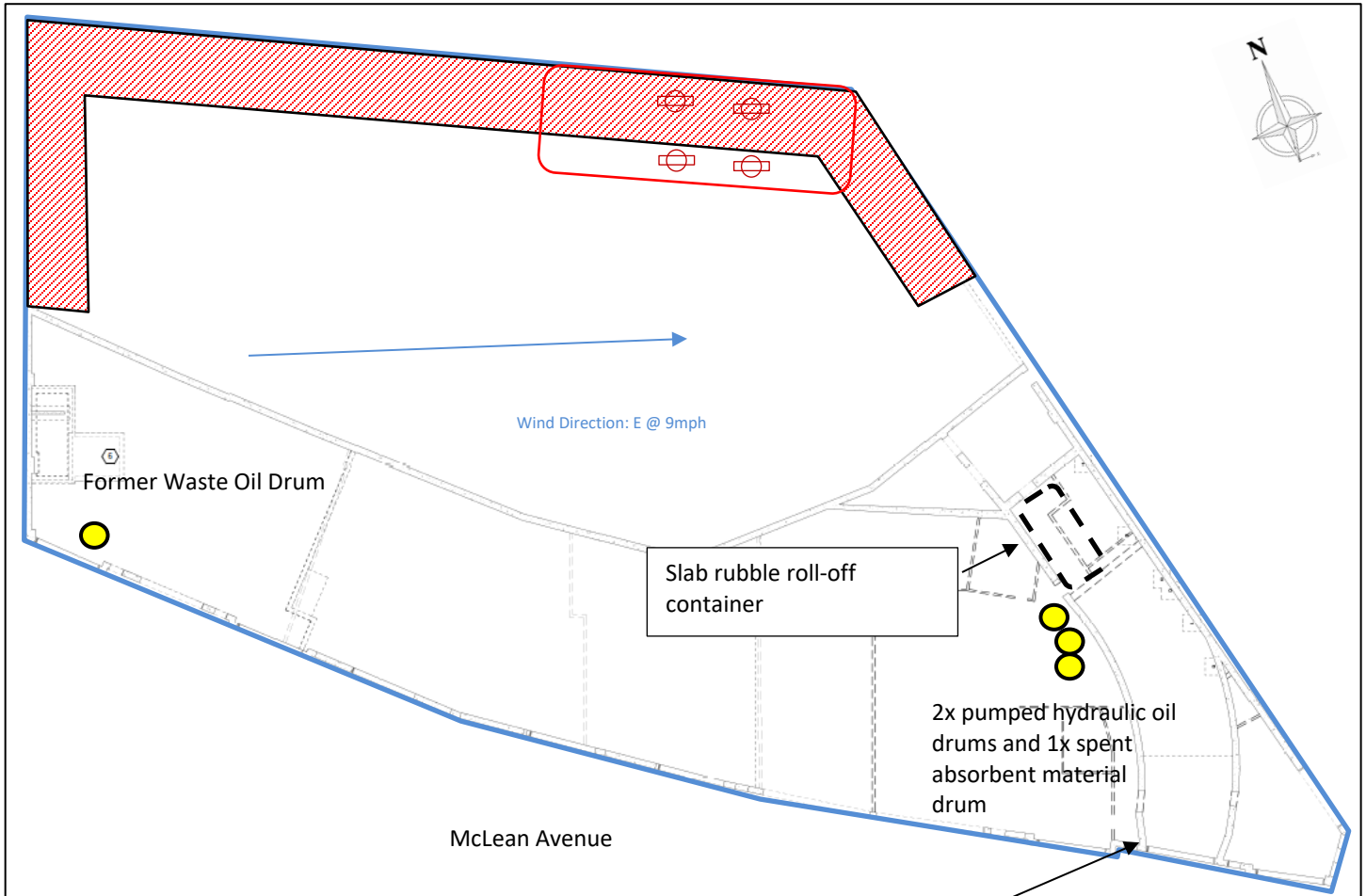
<p>IEEG Scope of Work:</p> <ul style="list-style-type: none"> Oversight of ground-intrusive activities throughout site with active Community Air Monitoring Program (CAMP) implementation. <p>Site Activities:</p> <ul style="list-style-type: none"> Limited work was performed (excavator broke down) <p>Community Air Monitoring Program (CAMP)</p> <ul style="list-style-type: none"> No air monitoring was performed by IEEG due to no ground disturbance activities. <p>Miscellaneous Items or Problem Encountered:</p> <ul style="list-style-type: none"> Excavator unable to start. <p>Planned Activities for the Next Day:</p> <ul style="list-style-type: none"> Repair of excavator, possible excavation



Impact Environmental Engineering Geology, PLLC

170 Keyland Court | Bohemia | NY | 11716 | 631.269.8800 welcome to solid ground...
www.impactenvironmental.com

Site Activity Map



- ★ CAMP Station
- Property Boundary
- ▨ Work Area / Slab Broken Up (removed)
- PID Screening Point
- Over-Excavated area
- ⊕ Piston
- Drums

Ramp door open



Impact Environmental Engineering Geology, PLLC

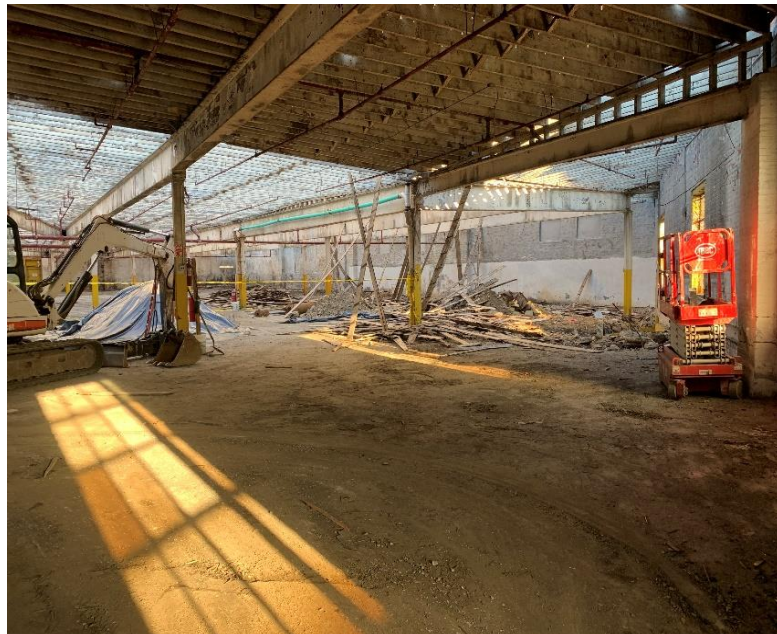
170 Keyland Court | Bohemia | NY | 11716 | 631.269.8800 welcome to solid ground...
www.impactenvironmental.com

Photo Log

Photo 1 – General view of site facing west.



Photo 2 – General view of site facing east.





Impact Environmental Engineering Geology, PLLC

170 Keyland Court | Bohemia | NY | 11716 | 631.269.8800 welcome to solid ground...

www.impactenvironmental.com

Photo 3 – View of hydraulic oil containing drums (2), and spent absorbent material (1) awaiting disposal.

