

GENERAL NOTE:

1. GENERAL LAYOUT WAS OBTAINED FROM A DRAWING PREPARED BY CARLIN-SIMPSON AND ASSOCIATES (CSA) DATED 12/16/2010, DWS NO. 54-1.
2. TEST PROBE AND MONITORING WELL LOCATIONS WERE LAD OUT IN THE FIELD BY CARLIN-SIMPSON & ASSOCIATES (CSA).
3. TEST PROBES AND MONITORING WELLS WERE PERFORMED BY GENERAL LOGGING INC. IN OCTOBER 2013 UNDER THE FULL TIME SUPERVISION OF CSA.
4. LOCATIONS ARE APPROXIMATE.

LEGEND:

- ◆ - TEST PROBE LOCATION
- ◆ - MONITORING WELL LOCATION

ROBERT B. SIMPSON, P.E.
PROFESSIONAL ENGINEER

BORING & WELL LOCATION PLAN

BEHRETT'S SERVICE STATION
23 SOUTH WEST STREET
MT. VERNON, NEW YORK

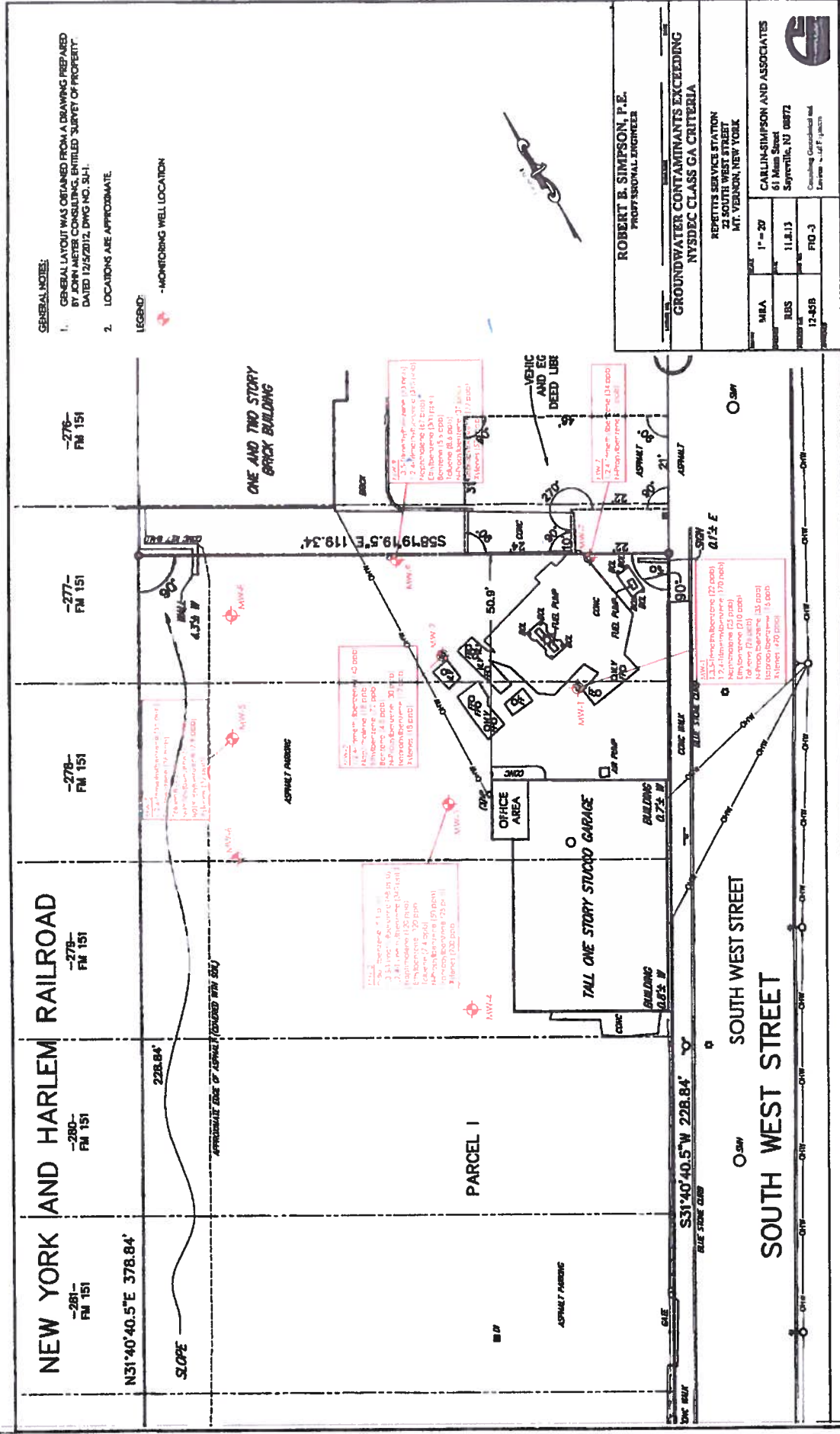
MDA	1" = 20'
RDS	11.8.13
DATE	F10-1
PROJECT	12-838

CARLIN-SIMPSON AND ASSOCIATES
61 Main Street
Sayreville, NJ 08872
Drawing Created on
Environmental Engineers



GENERAL NOTE:
 1. GENERAL LAYOUT WAS OBTAINED FROM A DRAWING PREPARED BY JOHN METER CONSULTING, ENTITLED "SURVEY OF PROPERTY" DATED 12/5/2012, DWG NO. S.H.
 2. LOCATIONS ARE APPROXIMATE.

LEGEND:
 - MONITORING WELL LOCATION



ROBERT B. SIMPSON, P.E.
 PROFESSIONAL ENGINEER

GROUNDWATER CONTAMINANTS EXCEEDING NYSDEC CLASS GA CRITERIA

REPETTS SERVICES STATION
 21 SOUTH WEST STREET
 MT. VERNON, NEW YORK

MILA	1" = 20'
RBS	11.8.13
12-89B	FD-3

CARLIN-SIMPSON AND ASSOCIATES
 61 Main Street
 Sayreville, NJ 08872
 Consulting Geotechnical Inc.
 License # 4171425

GENERAL NOTE:
 1. GENERAL LAYOUT WAS OBTAINED FROM A DRAWING PREPARED BY JOHN METER CONSULTING, ENTITLED "SURVEY OF PROPERTY," DATED 12/5/2012, DWG NO. 3011.
 2. LOCATIONS ARE APPROXIMATE

LEGEND:
 - MONITORING WELL LOCATION
 - GROUNDWATER CONTOUR WITH RELATIVE ELEVATION

ROBERT B. SIMPSON, P.E.
 PROFESSIONAL ENGINEER

GROUNDWATER CONTOUR MAP - OCT. 2013

REPETTIS SERVICE STATION
 23 SOUTH WEST STREET
 MT. VERNON, NEW YORK

DATE	11.8.13	FIG. 3
PROJECT	12-539	
SCALE	1" = 20'	
DRAWN BY	RBS	
PROJECT NO.	12-539	
CARLIN-SIMPSON AND ASSOCIATES 61 Main Street Sayreville, NJ 08872 Consulting Geotechnical and Environmental Engineers		

