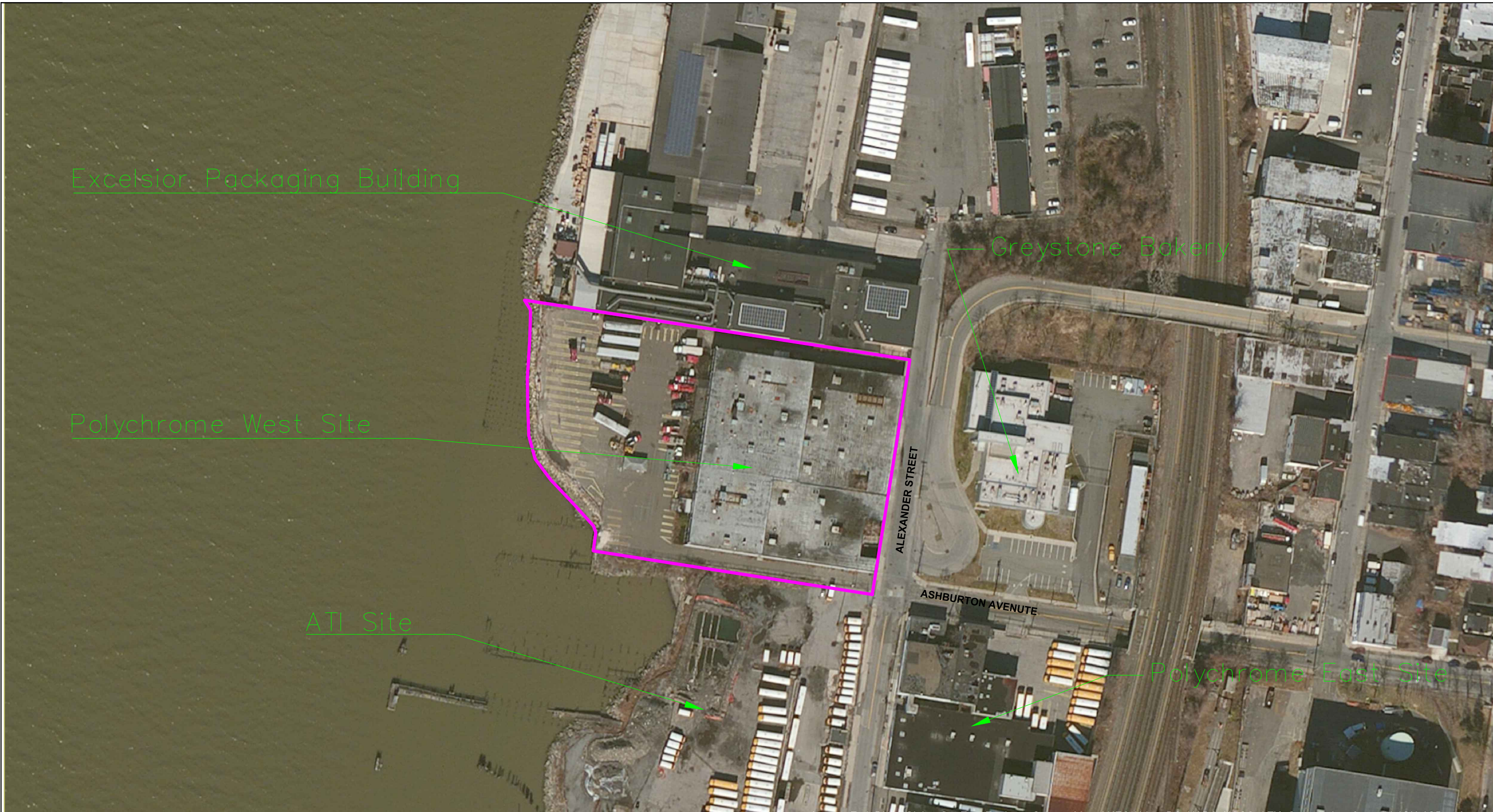


©2018 AKRF, Inc Q:\Projects\40566 - AVALONBAY YONKERSTechnical\Hazmat\CAD\40566 Fig 2 WC Grid (Polychrome West).dwg last save: pmchugh 2/15/2018 11:36 AM



Aerial Source:
2014 New York Statewide Digital Orthoimagery.



LEGEND
PROJECT SITE BOUNDARY



Former Halstead Quinn/Ati
Tank Farm Site
Yonkers, New York



440 Park Avenue South, New York, NY 10016

DATE

PROJECT NO.

40566

FIGURE

1

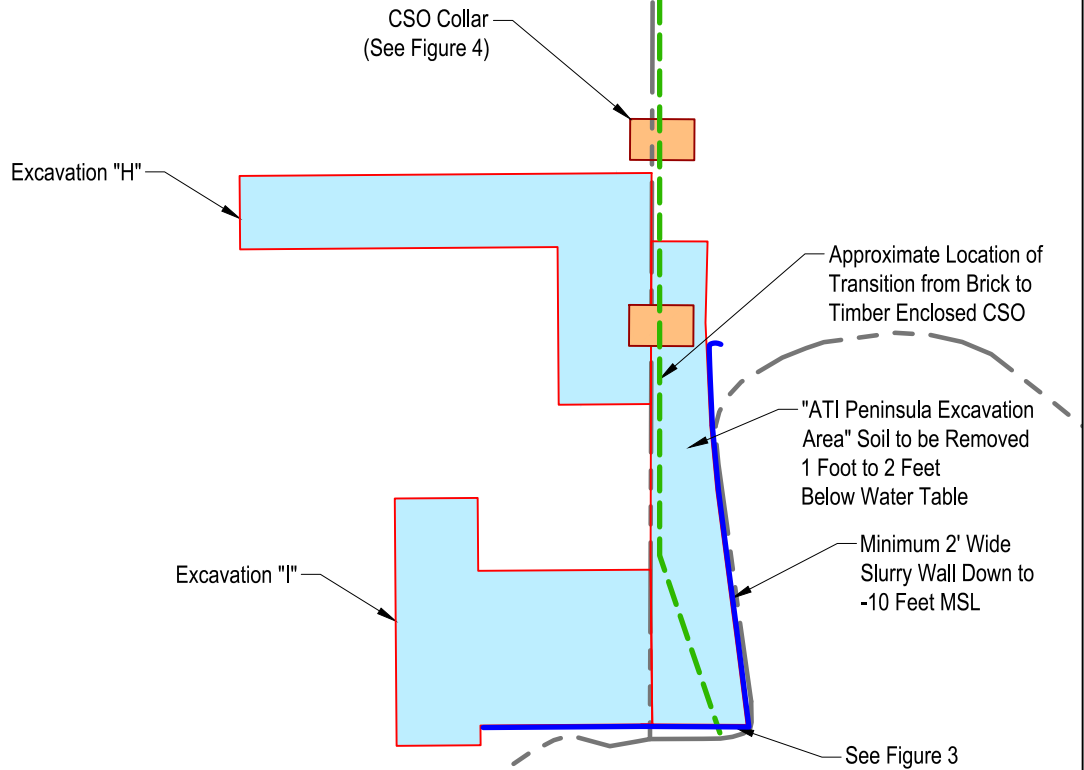
FIGURE 1 - SITE LAYOUT

ALEXANDER STREET



POLYCHROME WEST SITE

ATI SITE



LEGEND

- PROPERTY LINE
- APPROXIMATE CSO PIPE LOCATION
- EXCAVATION AREAS BELOW THE WATER TABLE
- SLURRY WALL
- CSO COLLARS

HUDSON RIVER



Source:
 Drawing comprised of AutoCAD Layers provided by
 Paulus, Sokolowski and Sartor Engineering, P.C.

©2018 AKRF, Inc. Q:\Projects\180017 - AVALONBAY YONKERS PCW\Technical\Hazmat\Polychrome West\CAD\180017 Figure Excavation Areas.dwg last save: mveilleux 3/12/2018 4:48 PM



440 Park Avenue South, New York, NY 10016

**Polychrome West
 NYSDEC Site
 Yonkers, New York**

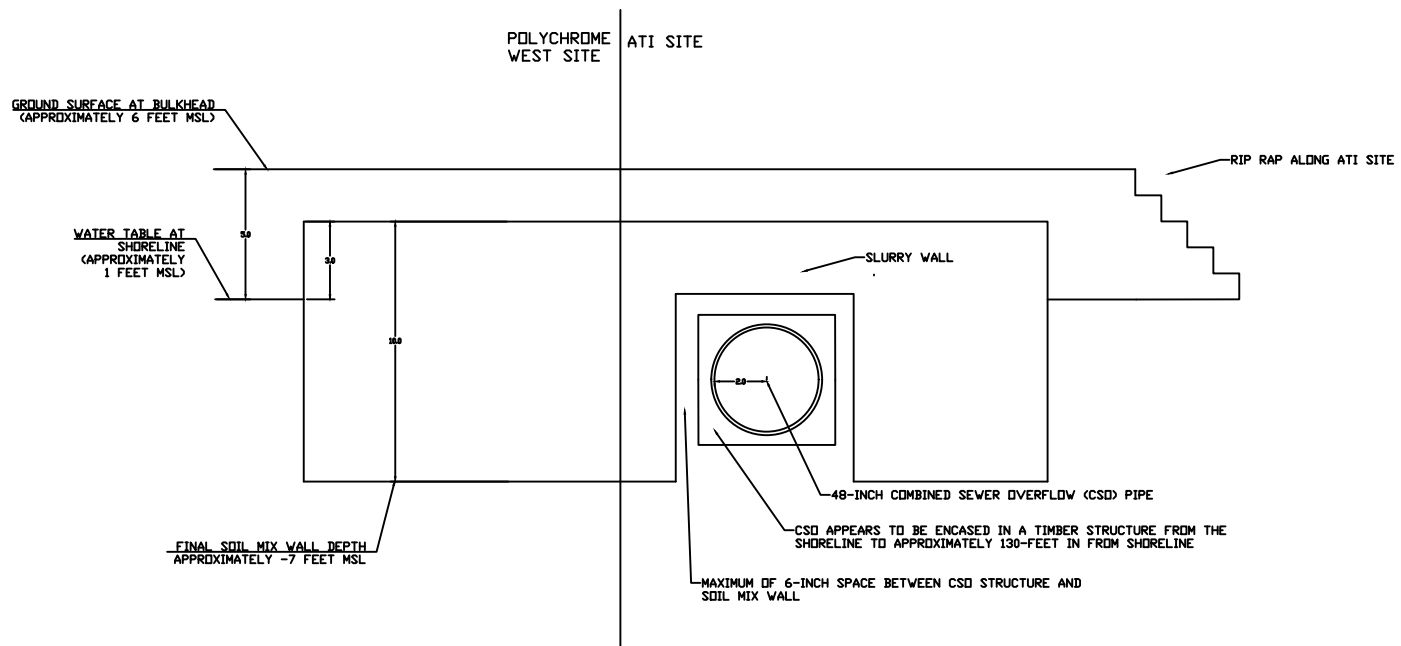
EXCAVATION AREAS

DATE
3/12/2018

PROJECT NO.
180017

FIGURE
2

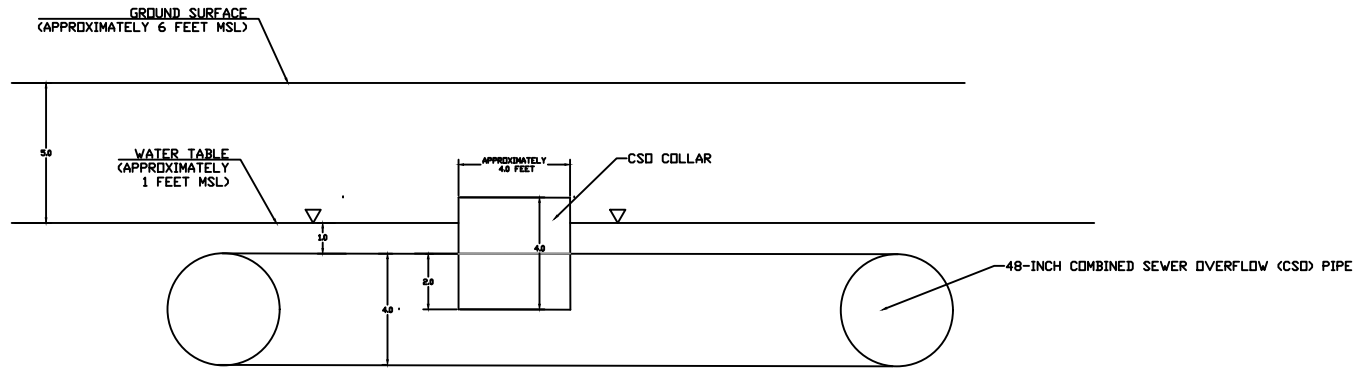
FIGURE 3 - SOIL MIX WALL DETAILS



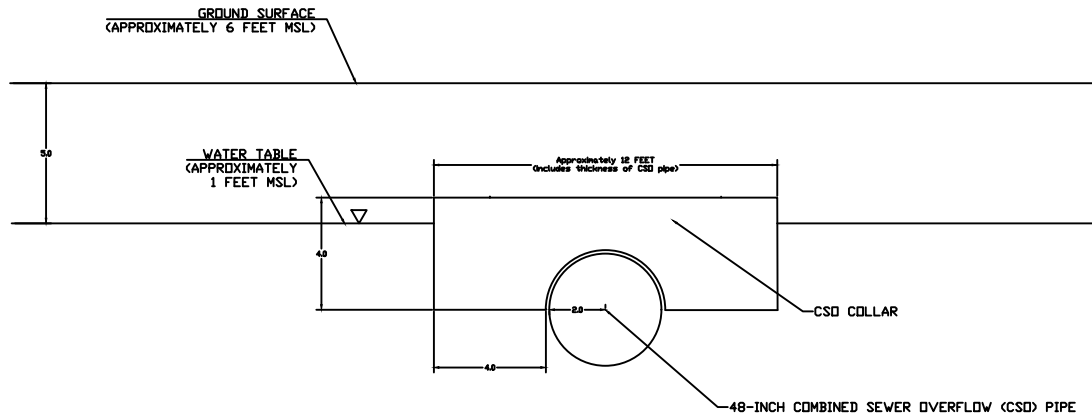
NOTE: UNLESS OTHERWISE STATED, UNITS ARE IN FEET.
HORIZONTAL NOT TO SCALE.

FIGURE 4 - ANTI-SEEP COLLAR DETAILS

DETAIL 1

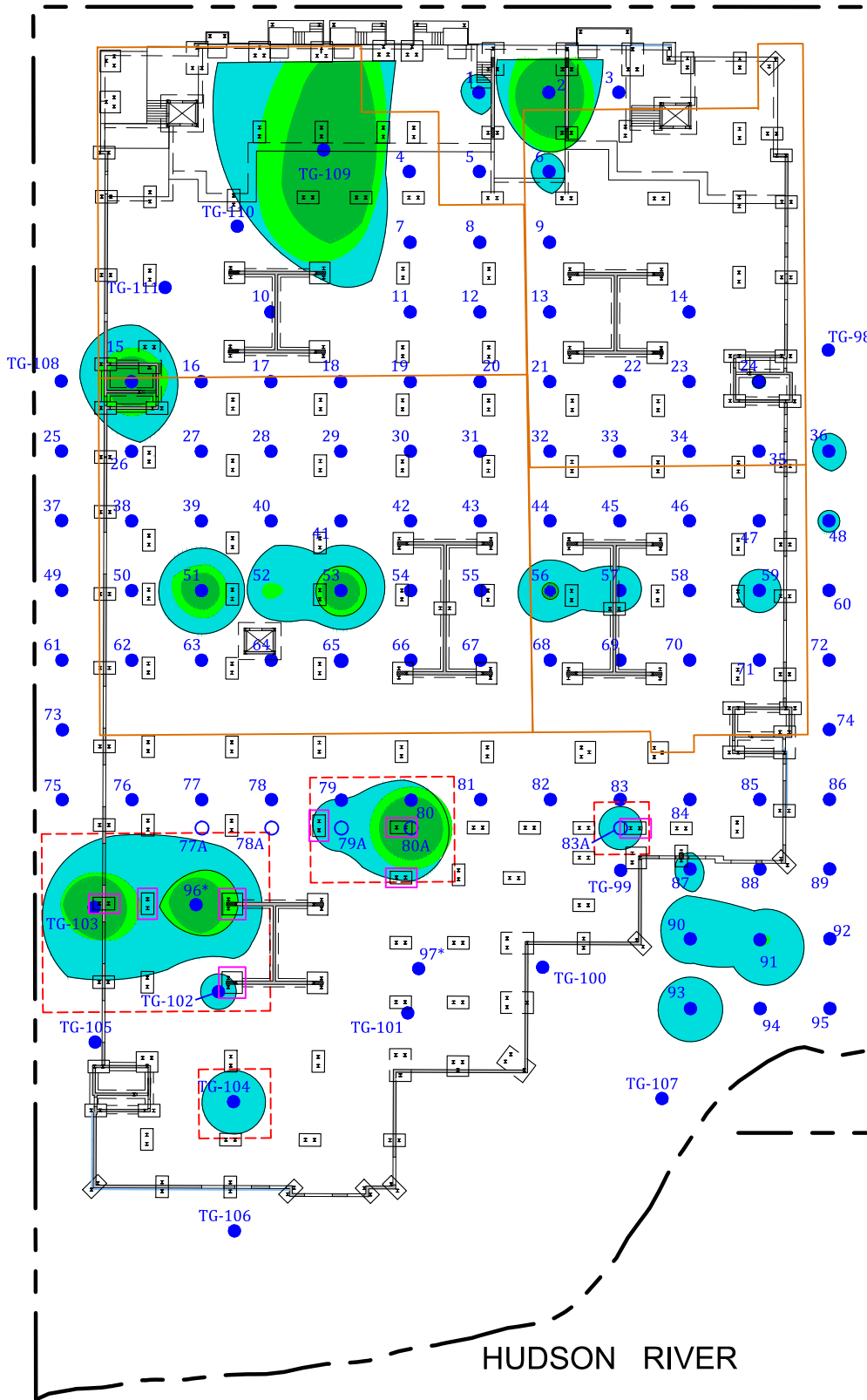


DETAIL 2



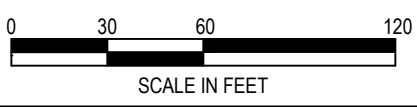
NOTE: UNLESS OTHERWISE STATED, UNITS ARE IN FEET.

ALEXANDER STREET



LEGEND

- PROPERTY LINE
- PROPOSED PDI LIF BORING
- AKRF FIELD OBSERVED LOCATION
- - - SPECIAL DNAPL AREAS
- 120% RE RESPONSE
- 100% RE RESPONSE
- 60% RE RESPONSE
- PILES REQUIRING MODIFICATION



Source:
Drawing comprised of AutoCAD Layers provided by
Paulus, Sokolowski and Sartor Engineering, P.C.

©2018 AKRF, Inc. Q:\Projects\180017 - AVALONBAY YONKERS PCW\Technical\Hazmat\Polychrome West\CAD\180017 Figure 1 PDI Borings.dwg last save: mvelieux 2/28/2018 1:10 PM



440 Park Avenue South, New York, NY 10016

**Polychrome West
NYSDEC Site
Yonkers, New York**

SPECIAL DNAPL AREAS

DATE
2/28/2018

PROJECT NO.
180017

FIGURE
5