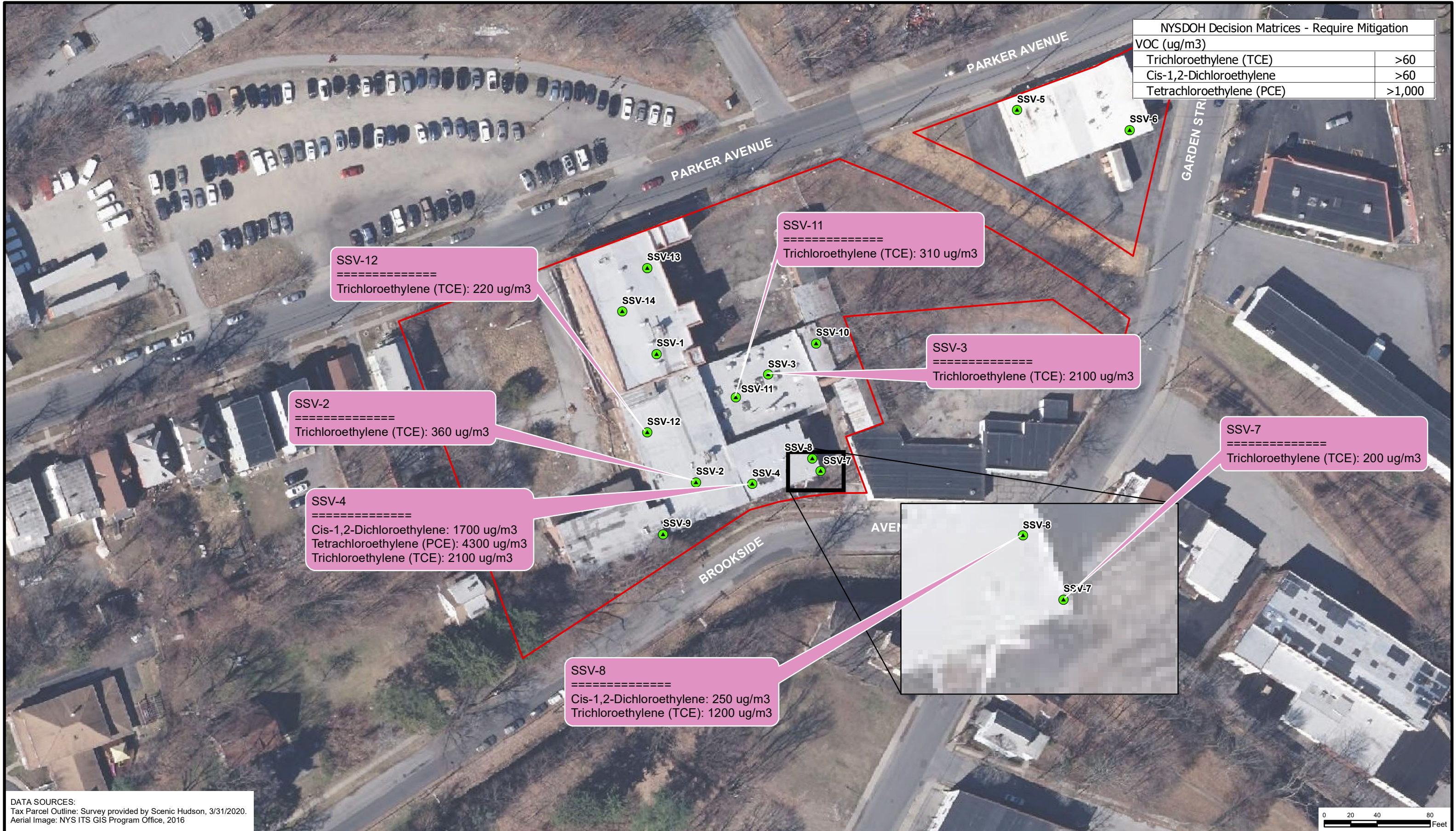


NYSDOH Decision Matrices - Require Mitigation	
VOC (ug/m3)	
Trichloroethylene (TCE)	>60
Cis-1,2-Dichloroethylene	>60
Tetrachloroethylene (PCE)	>1,000



SSV-12
 =====
 Trichloroethylene (TCE): 220 ug/m3

SSV-11
 =====
 Trichloroethylene (TCE): 310 ug/m3

SSV-3
 =====
 Trichloroethylene (TCE): 2100 ug/m3

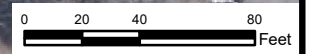
SSV-2
 =====
 Trichloroethylene (TCE): 360 ug/m3

SSV-7
 =====
 Trichloroethylene (TCE): 200 ug/m3

SSV-4
 =====
 Cis-1,2-Dichloroethylene: 1700 ug/m3
 Tetrachloroethylene (PCE): 4300 ug/m3
 Trichloroethylene (TCE): 2100 ug/m3

SSV-8
 =====
 Cis-1,2-Dichloroethylene: 250 ug/m3
 Trichloroethylene (TCE): 1200 ug/m3

DATA SOURCES:
 Tax Parcel Outline: Survey provided by Scenic Hudson, 3/31/2020.
 Aerial Image: NYS ITS GIS Program Office, 2016



<p>48 Springside Avenue Poughkeepsie, NY 12603 Office: 845.454.2544 Fax: 845.454.2655</p>	<p>SOIL VAPOR SAMPLES REQUIRING MITIGATION - NYSDOH DECISION MATRICES</p> <p>58 PARKER AVENUE & 164 GARDEN STREET CITY OF POUGHKEEPSIE DUTCHESS COUNTY, NEW YORK</p>	<p>LEGEND</p> <p>▭ TAX PARCEL OUTLINE</p> <p>● SOIL VAPOR</p>	<p>PROJECT NO. 560532</p>	<p>FIGURE 5C</p>
			<p>DATE: 04/20/2020</p>	<p>SCALE: AS INDICATED DATUM: NAD83</p>
				<p>PROJECTION: STATE PLANE NY EAST (FT)</p>
			<p>ALL LOCATIONS APPROXIMATE</p>	