



Environmental, Planning, and Engineering Consultants

440 Park Avenue South
7th Floor
New York, NY 10016
tel: 212 696-0670
fax: 212 213-3191
www.akrf.com

February 9, 2022

Mr. Christopher Allen
NYS Department of Environmental Conservation
Division of Environmental Remediation
47-40 21st Street
Long Island City, NY 11101-5407

Re: Monthly Progress Report – January 2022
Newtown Creek Bud Site – North Block
2-10 54th Avenue, Long Island City, New York
NYSDEC BCP Site No. C241248

Dear Mr. Allen:

This Monthly Progress Report has been prepared by AKRF, Inc. (AKRF) to summarize the work performed for the Newtown Creek Bud Site – North Block, New York State Department of Environmental Conservation (NYSDEC) Brownfield Cleanup Program (BCP) project (Site No. C241248), which is located at 2-10 54th Avenue (soon to be referred as 2-21 Malt Drive), Long Island City, New York, during the month of January 2022. A Site location plan is provided as Figure 1.

The following activities were conducted in January 2022:

- Following receipt of comments from NYSDEC and the New York State Department of Health (NYSDOH), AKRF submitted a final version of the Remedial Action Work Plan (RAWP) on January 11, 2022. NYSDEC approved the RAWP and issued the Decision Document on January 19, 2022.
- On behalf of the Volunteer, AKRF mobilized to the Site on January 13, 2022 to collect supplemental waste characterization samples at the locations presented in Figure 2. AKRF performed air monitoring for particulates and volatile organic compounds (VOCs) during field activities, in accordance with the Community Air Monitoring Program (CAMP) in the NYSDEC-approved RAWP. The CAMP data was included in the field summary report that was submitted to NYSDEC on January 14, 2022.

The following activities are planned for February 2022:

- Pending receipt of a permit from the New York City Department of Buildings (NYCDOB), the Volunteer plans to mobilize to the Site to install test piles and conduct load tests in February 2022. AKRF will be on-site during all intrusive activities to perform air monitoring for particulates and VOCs, in accordance with the CAMP in the NYSDEC-approved RAWP. The CAMP data will be included in field summary reports submitted to NYSDEC.

If you have any questions regarding the information presented in this letter, please contact Marc at (914) 922-2356 or mgodick@akrf.com or Patrick at (646) 388-9784 or jdiggins@akrf.com.

Sincerely,
AKRF, Inc.



Marc S. Godick, LEP
Senior Vice President



J. Patrick Diggins
Technical Director

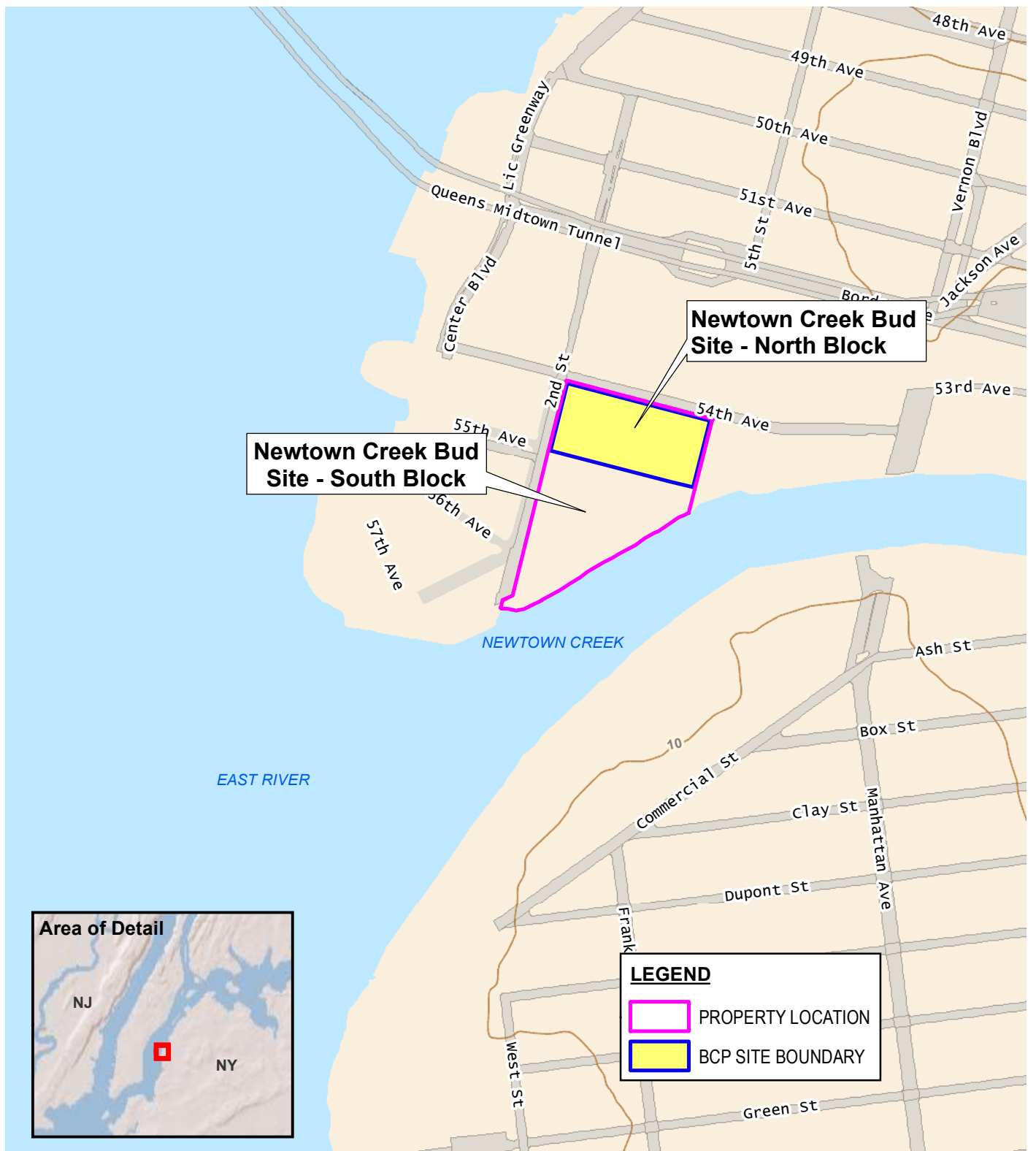
Enc. Figure 1 – Site Location
Figure 2 – Supplemental Soil Pre-characterization Sampling Locations

cc (electronic copy only):

Shaun J. Surani – NYSDOH
George Georgioudakis, Bruce Weill, Mael Illien, Nicholas Vasta – Bud North LLC
Document Repositories – Queens Community Board District 2 and Queens Library at Long Island City

W:\Projects\200112 - BUD NORTH\Technical\Hazmat\Monthly Reports\2021.12\C241248_2021-12_Monthly Progress Report.docx

FIGURES



440 Park Avenue South, New York, NY 10016

Newtown Creek Bud Site - North Block
2-10 54th Avenue - Long Island City, New York

SITE LOCATION

DATE

10/8/2020

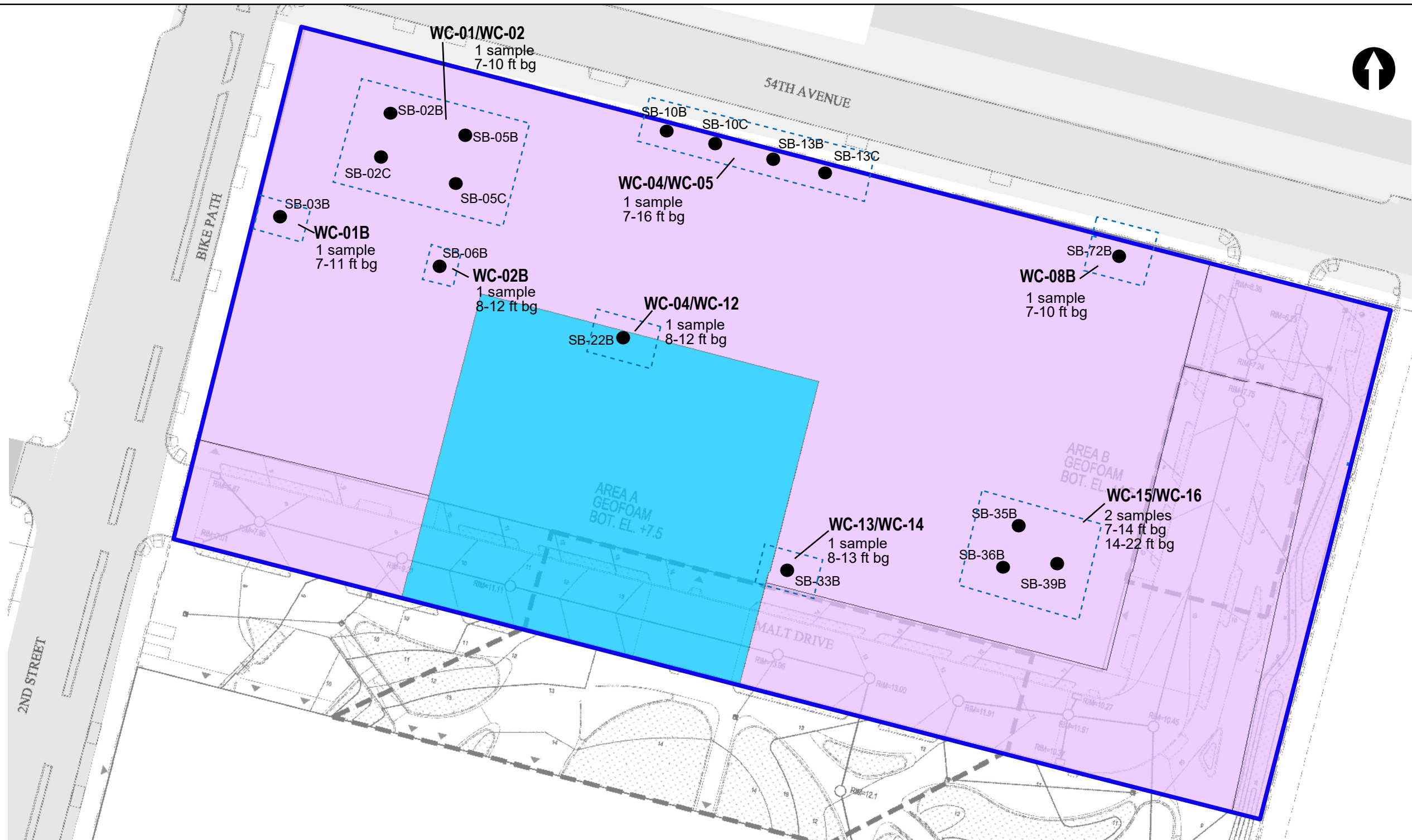
PROJECT NO.

200112

FIGURE

1

© 2021 AKRF W:\Projects\200112 - BUD NORTH\Technical\GIS and Graphics\hazmat\Waste Class\200112 Figure 2 Soil Pre-Characterization Sampling Locations.mxd 12/3/2021 6:42:02 PM iscalus



LEGEND

- BCP SITE BOUNDARY
- SUPPLEMENTAL WASTE CLASS GRID
- REMEDIAL EXCAVATION TO 2 FEET BELOW GROUNDWATER (APPROX. 50 FEET BY 75 FEET UP TO 11 FEET) FOR HOTSPOT REMOVAL SOURCE AREA
- EXCAVATION TO BETWEEN APPROXIMATELY 2 AND 4 FEET BELOW EXISTING GRADE, AND UP TO 22 FEET BELOW GRADE, FOR REMEDIATION AND REDEVELOPMENT
- WASTE CLASS BORING LOCATIONS
- FT BG = FEET BELOW GRADE



Map Source:
NYC DCP (NYC Dept. of City Planning) GIS database

Newtown Creek Bud Site - North Block

2-21 Malt Drive - Long Island City, New York

SUPPLEMENTAL SOIL PRE-CHARACTERIZATION SAMPLING LOCATIONS
(SAMPLES COLLECTED ON JANUARY 13, 2022)



440 Park Avenue South, New York, NY 10016

DATE
1/3/2022

PROJECT NO.
200112

FIGURE
2