

<b>CLIENT:</b> Queens Development Group, LLC <b>PROJECT No.:</b> 170197632.300.101.0 <b>PROJECT:</b> Willets Point   OU-1 (Phase 1A) <b>LOCATION:</b> Queens, New York	<b>DATE:</b> Wednesday, August 03, 2022 <b>WEATHER:</b> Cloudy, 70s °F <b>TIME:</b> 7:00 AM – 4:30 PM <b>BCP SITE ID:</b> C241146
<b>EQUIPMENT:</b> Groundwater sampling equipment	<b>PRESENT AT SITE:</b> <b>Langan:</b> Roswell Lo <b>Triumph Construction</b> (General Contractor) <b>Peak Security Plus</b> (Site Security): 1-person crew

### OBSERVATIONS, DISCUSSIONS, TEST RESULTS, ETC.:

Langan documented the following activities in accordance with the May 11, 2021 NYSDEC-approved Remedial Action Work Plan (RAWP):

#### Site Activities

- Langan began collecting post-remedial quarterly groundwater samples from the well network at OU-1.

#### Sampling

- Langan collected groundwater samples from monitoring wells A-SB115, B-SB206, and C-MW205. The samples were sent to Alpha Analytical Laboratory to be analyzed for volatile organic compounds (VOCs) and semi-volatile organic compounds (SVOCs).
- Langan was unable to collect groundwater samples from monitoring well A-MW112 due to blockage at about 4.5 feet from the top of well casing, and from monitoring well A-MW204 because the well stopped producing after purging about 1.5 gallons of groundwater.

#### Community Air Monitoring Plan Activities

- The CAMP has been discontinued since the site has been stabilized with a composite cap consisting of 20 inches of clean fill topped with 4 inches of gravel and no intrusive activities were completed.
- Ground-intrusive work was not performed; there was no penetration or disturbance to the site cap around the vault.

#### Material Tracking

- None.

#### Anticipated Activities

- Langan will continue groundwater sampling.

cc: Project Team

By: Roswell Lo

Langan Engineering, Environmental, Surveying, Landscape Architecture and Geology, D.P.C.

## Photographs



Photo 1: Sampling at B-SB206 (facing west)



Photo 2: Sampling C-MW205 (facing northwest)

cc: Project Team

By: Roswell Lo

**Langan Engineering, Environmental, Surveying, Landscape Architecture and Geology, D.P.C.**

**Figure 1 – Monitoring Well Location Map:**

Notes:

1. Drawing background from June 24, 2022 Draft CCR Figure 6 "Monitoring Well Location Map" by Langan.
2. Drawing not to scale.

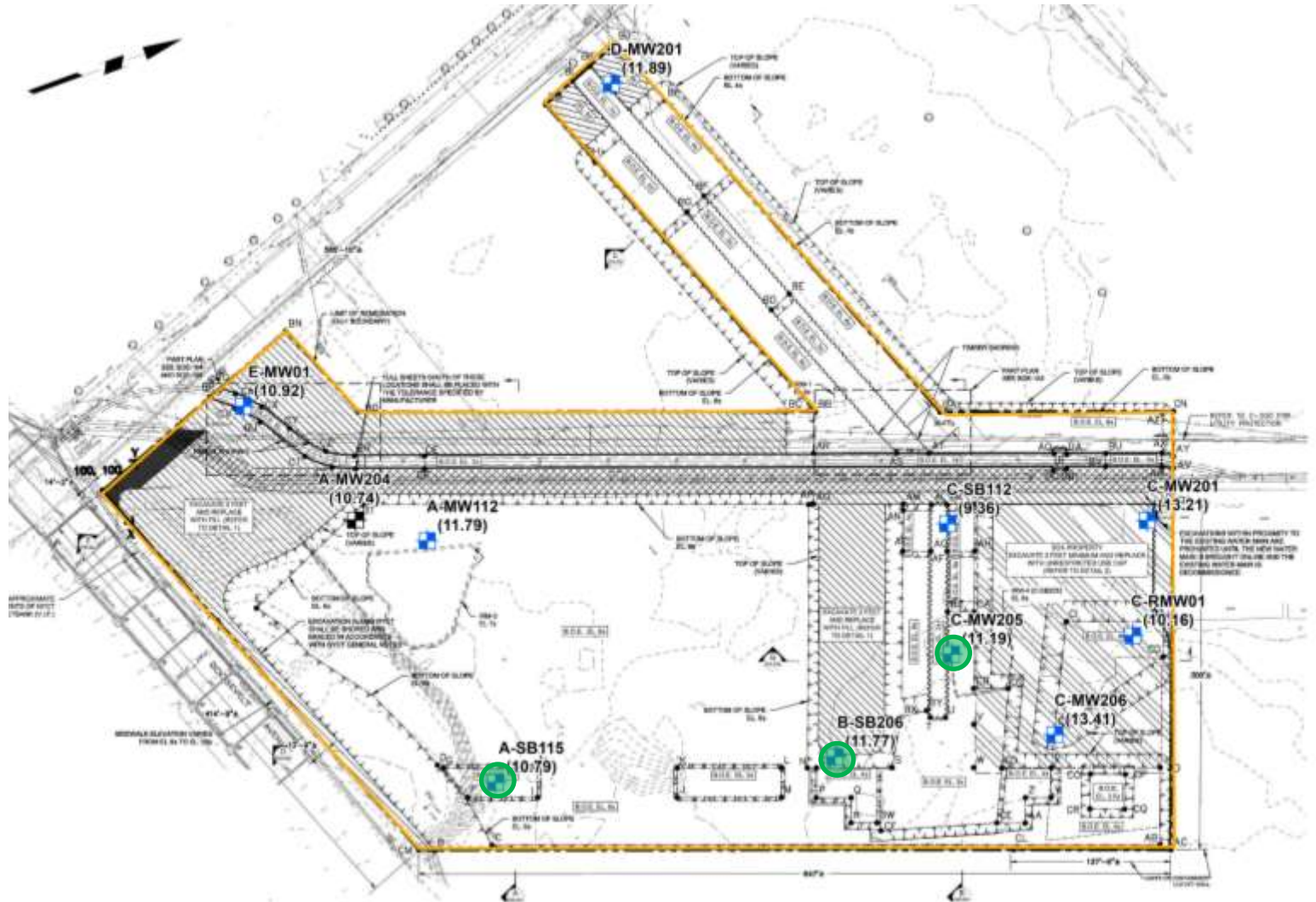
**LEGEND:**



Monitoring Well



Sampled Monitoring Well



cc: Project Team

By:

Roswell Lo

Langan Engineering, Environmental, Surveying, Landscape Architecture and Geology, D.P.C.

<b>CLIENT:</b> Queens Development Group, LLC <b>PROJECT No.:</b> 170197632.300.101.0 <b>PROJECT:</b> Willets Point   OU-1 (Phase 1A) <b>LOCATION:</b> Queens, New York	<b>DATE:</b> Thursday, August 04, 2022 <b>WEATHER:</b> Sunny, 90s °F <b>TIME:</b> 7:00 AM – 4:30 PM <b>BCP SITE ID:</b> C241146
<b>EQUIPMENT:</b> Groundwater sampling equipment	<b>PRESENT AT SITE:</b> <b>Langan:</b> Roswell Lo <b>Triumph Construction</b> (General Contractor) <b>Peak Security Plus</b> (Site Security): 1-person crew

### OBSERVATIONS, DISCUSSIONS, TEST RESULTS, ETC.:

Langan documented the following activities in accordance with the May 11, 2021 NYSDEC-approved Remedial Action Work Plan (RAWP):

#### Site Activities

- Langan continued collecting post-remedial quarterly groundwater samples from the well network at OU-1.

#### Sampling

- Langan collected groundwater samples from monitoring wells C-MW201, C-RMW01, and C-SB112. The samples were sent to Alpha Analytical Laboratory to be analyzed for volatile organic compounds (VOCs) and semi-volatile organic compounds (SVOCs).
- Langan was unable to collect groundwater samples from monitoring well C-MW206 due to blockage at about 6 feet from the top of well casing.

#### Community Air Monitoring Plan Activities

- The CAMP has been discontinued since the site has been stabilized with a composite cap consisting of 20 inches of clean fill topped with 4 inches of gravel and no intrusive activities were completed.
- Ground-intrusive work was not performed; there was no penetration or disturbance to the site cap around the vault.

#### Material Tracking

- None.

#### Anticipated Activities

- Langan will continue groundwater sampling.

cc: Project Team

By: Roswell Lo

**Langan Engineering, Environmental, Surveying, Landscape Architecture and Geology, D.P.C.**



## Photographs



Photo 1: Sampling at C-SB112 (facing north)



Photo 2: Sampling C-SB112 (facing south)

cc: Project Team

By: Roswell Lo

**Langan Engineering, Environmental, Surveying, Landscape Architecture and Geology, D.P.C.**

**Figure 1 – Monitoring Well Location Map:**

Notes:

1. Drawing background from June 24, 2022 Draft CCR Figure 6 "Monitoring Well Location Map" by Langan.
2. Drawing not to scale.

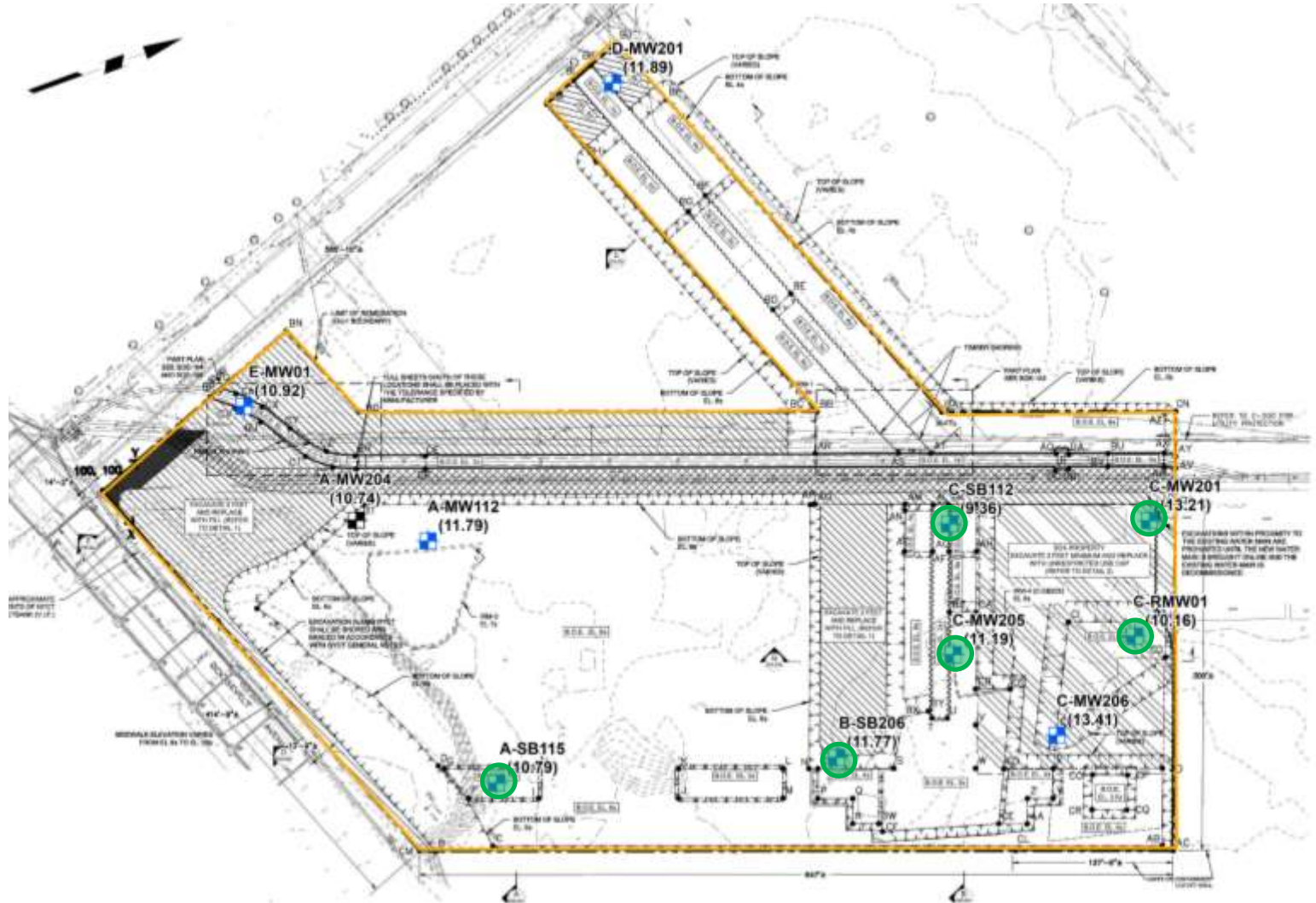
**LEGEND:**



Monitoring Well



Sampled Monitoring Well



cc: Project Team

By:

Roswell Lo

Langan Engineering, Environmental, Surveying, Landscape Architecture and Geology, D.P.C.

<b>CLIENT:</b> Queens Development Group, LLC <b>PROJECT No.:</b> 170197632.300.101.0 <b>PROJECT:</b> Willets Point   OU-1 (Phase 1A) <b>LOCATION:</b> Queens, New York	<b>DATE:</b> Friday, August 05, 2022 <b>WEATHER:</b> Partly Sunny, 90s °F <b>TIME:</b> 7:00 AM – 2:00 PM <b>BCP SITE ID:</b> C241146
<b>EQUIPMENT:</b> Groundwater sampling equipment	<b>PRESENT AT SITE:</b> <b>Langan:</b> Roswell Lo <b>Triumph Construction</b> (General Contractor) <b>Peak Security Plus</b> (Site Security): 1-person crew

### OBSERVATIONS, DISCUSSIONS, TEST RESULTS, ETC.:

Langan documented the following activities in accordance with the May 11, 2021 NYSDEC-approved Remedial Action Work Plan (RAWP):

#### Site Activities

- Langan completed collecting post-remedial quarterly groundwater samples from the well network at OU-1.

#### Sampling

- Langan collected groundwater samples from monitoring wells A-MW204, D-MW201, and E-MW01 plus QA/QC samples. The samples were sent to Alpha Analytical Laboratory to be analyzed for volatile organic compounds (VOCs) and semivolatile organic compounds (SVOCs).

#### Community Air Monitoring Plan Activities

- The CAMP has been discontinued since the site has been stabilized with a composite cap consisting of 20 inches of clean fill topped with 4 inches of gravel and no intrusive activities were completed.
- Ground-intrusive work was not performed; there was no penetration or disturbance to the site cap around the vault.

#### Material Tracking

- None.

#### Anticipated Activities

- None.

cc: Project Team

By: Roswell Lo

Langan Engineering, Environmental, Surveying, Landscape Architecture and Geology, D.P.C.



## Photographs



Photo 1: Sampling at D-MW201 (facing southeast)



Photo 2: 55-gallon drum containing purged groundwater (facing south)

cc: Project Team

By: Roswell Lo

**Langan Engineering, Environmental, Surveying, Landscape Architecture and Geology, D.P.C.**



**Figure 2 – Monitoring Well Location Map:**

Notes:

1. Drawing background from June 24, 2022 Draft CCR Figure 6 "Monitoring Well Location Map" by Langan.
2. Drawing not to scale.

**LEGEND:**



Monitoring Well



Sampled Monitoring Well



Damaged Monitoring Well (not sampled)



cc: Project Team

By: Roswell Lo

Langan Engineering, Environmental, Surveying, Landscape Architecture and Geology, D.P.C.