

DAILY FIELD REPORT 142

Prepared By: LANGAN

WEATHER	Snow		Rain		Overcast		Partly Cloudy	X	Sunny	
TEMP.	< 32	X	32-50	x	50-70		70-85		>85	

BCP Project No:	C231153	Date:	December 13, 2023
------------------------	---------	--------------	-------------------

Project Name:	Kasser Scrap Metal and Rector Cleaners Site	Time:	7:00 am to 5:00 pm
----------------------	---	--------------	--------------------

Consultant: Langan Engineering, Environmental, Surveying, Landscape Architecture and Geology, D.P.C. (Langan)	Langan Field Personnel: Caitlyn Dempsey (Environmental) Xianglei Zheng (Geotechnical)
Construction Manager: Consigli Construction Co., Inc. (Consigli)	
Foundation Contractor: Urban Foundation/Engineering (Urban)	

Work Activities Performed:

- Urban excavated an about 20-foot-long by 20-foot-wide area around existing caissons from about 14 feet below grade surface (bgs) to about 18 feet bgs in the southern part of grids WC03_10-15 and WC03_15-20 for the installation of a foundation core mat. Excavated soil/fill was stockpiled in the western part of WC02, pending off-site disposal.
- Urban graded an about 30-foot-long by 30-foot-wide area in the southern part of grids WC02 to prepare for equipment mobilization.
- Excavated and graded soil/fill consisted of non-native soil; odors, staining, elevated photoionization detector (PID) readings, or other evidence of a petroleum or chemical release were not observed.
- Urban used an excavator with a jack hammer attachment to remove concrete from existing caissons in the south-central part of grid WC03 to prepare for equipment mobilization.
- Urban continued installing waterproofing/vapor barrier membranes (GCP Preprufe® 300R and related products) in the eastern part of the site. Waterproofing/vapor barrier installation observation and documentation is to verify general conformance with specifications and contract documents.

Material Tracking:

- No soil/fill was exported from the site.
- No material was imported to the site.

Materials Export Summary								
Facility Name	<i>Bayshore Soil Management, LLC</i>		<i>Clean Earth of Carteret, LLC</i>		<i>PPark NJ</i>		<i>Faztec Solutions</i>	
Location	<i>Keasbey, NJ</i>		<i>Carteret, NJ</i>		<i>Prospect Park, NJ</i>		<i>Staten Island, NY</i>	
Type of Waste	<i>Non-hazardous Soil</i>		<i>Non-hazardous Soil</i>		<i>Non-hazardous Soil</i>		<i>C&D</i>	
Today	Number of Loads	Approx. Volume (CY)	Number of Loads	Approx. Volume (CY)	Number of Loads	Approx. Volume (CY)	Number of Loads	Approximate Volume (CY)
	0	-	0	-	0	-	0	-
Total	Number of Loads	Approx. Volume (CY)	Number of Loads	Approx. Volume (CY)	Number of Loads	Approx. Volume (CY)	Number of Loads	Approximate Volume (CY)
	132	2,600	213	4,140	0	-	15	300

Materials Export Summary		
Facility Name	<i>Dale Transfer Corp.</i>	
Location	<i>West Babylon, NY</i>	
Type of Waste	<i>Concrete</i>	
Today	Number of Loads	Approx. Volume (CY)
	0	-
Total	Number of Loads	Approx. Volume (CY)
	2	40

Materials Import Summary				
Facility Name	<i>Greenpoint Quarry / North Shore Terminal</i>		<i>Stavola Bound Brook / North Shore Terminal</i>	
Location	<i>Staten Island, NY</i>		<i>Staten Island, NY</i>	
Type of Material	<i>ASTM #57 0.75-inch Stone</i>		<i>ASTM #2 2.5-inch Stone</i>	
Today	Number of Loads	Approx. Volume (CY)	Number of Loads	Approx. Volume (CY)
	0	-	0	-
Total	Number of Loads	Approx. Volume (CY)	Number of Loads	Approx. Volume (CY)
	0	-	0	-

Samples Collected:

- No samples were collected.

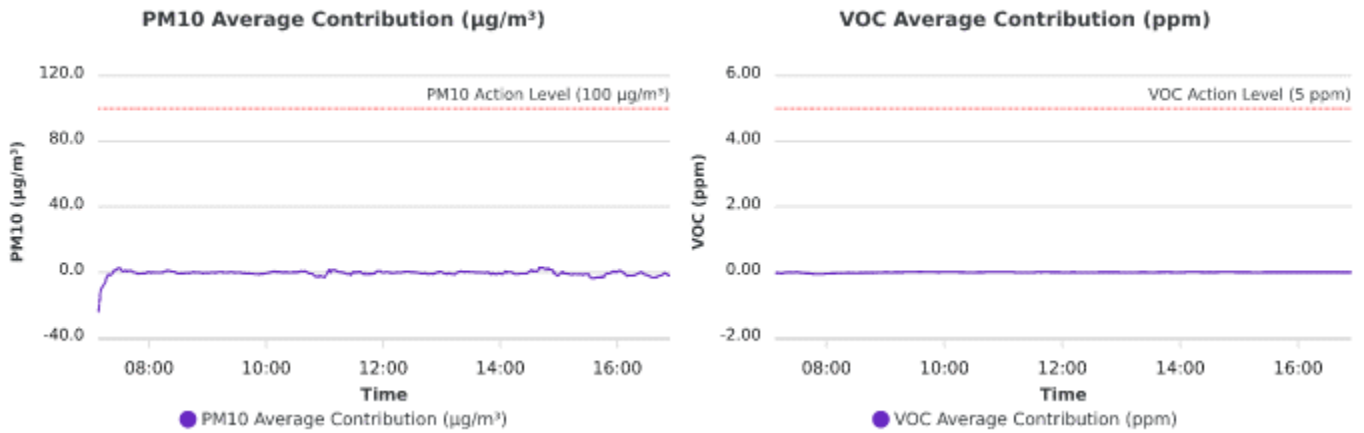
Air Monitoring:

The 15-minute average site contributions for particulates and volatile organic compounds (VOCs) are calculated by subtracting the upwind readings from the downwind readings. A true action level exceedance is realized when this net result exceeds 100 µg/m³ for particulates and 5 ppm for organic vapors. No particulates (PM10) or organic vapors exceeded the 15-minute average site contribution action level of 100 µg/m³ or 5 ppm, respectively, on this day.

Particulate Monitoring (µg/m ³)		Organic Vapor Monitoring (ppm)	
Daily Background	32.0	Daily Background	0.02
PM10 Average Site Contribution (Minimum)	-24.5	VOC Average Site Contribution (Minimum)	-0.06
PM10 Average Site Contribution (Maximum)	3.0	VOC Average Site Contribution (Maximum)	0.02

µg/m³: micrograms per cubic meter.

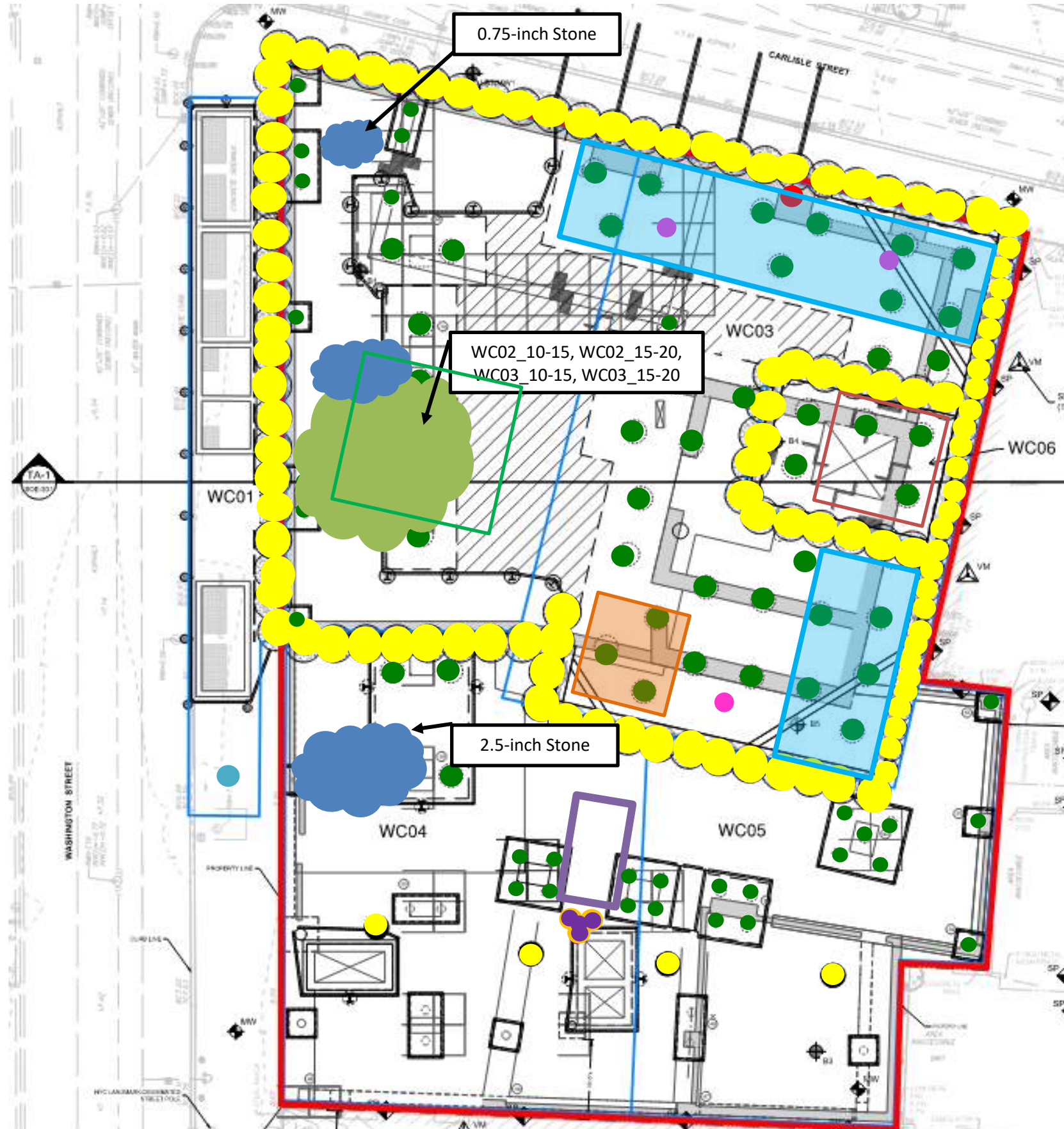
ppm: parts per million.



Planned Activities:

- Urban will continue excavation throughout the site to assist in the advancement of caissons, soldier piles and installation of the foundation mat.

SITE PLAN



- Site Boundary**
- Waste Characterization Grid Boundary**
- **CAMP station 1**
- **CAMP station 2**
- **Stockpile – Soil (no impacts)**
- **Stockpile – C&D**
- **Stockpile – Timber Piles**
- Approximate Location of Excavation**
- Approximate Area of Grading**
- Approximate Backfill Location**
- **Completed Soil-Mix Column**
- **Completed Caisson Casing**
- **Completed Caisson**
- **Reinstalled Soil-Mix Column as part of the In-Situ Stabilization of NAPL-contaminated Soil**
- **Soil-Mix Core Advanced**
- **Documentation Endpoint Sample**
- Completed Waterproofing Installation**
- Approximate Location of the Former UST**

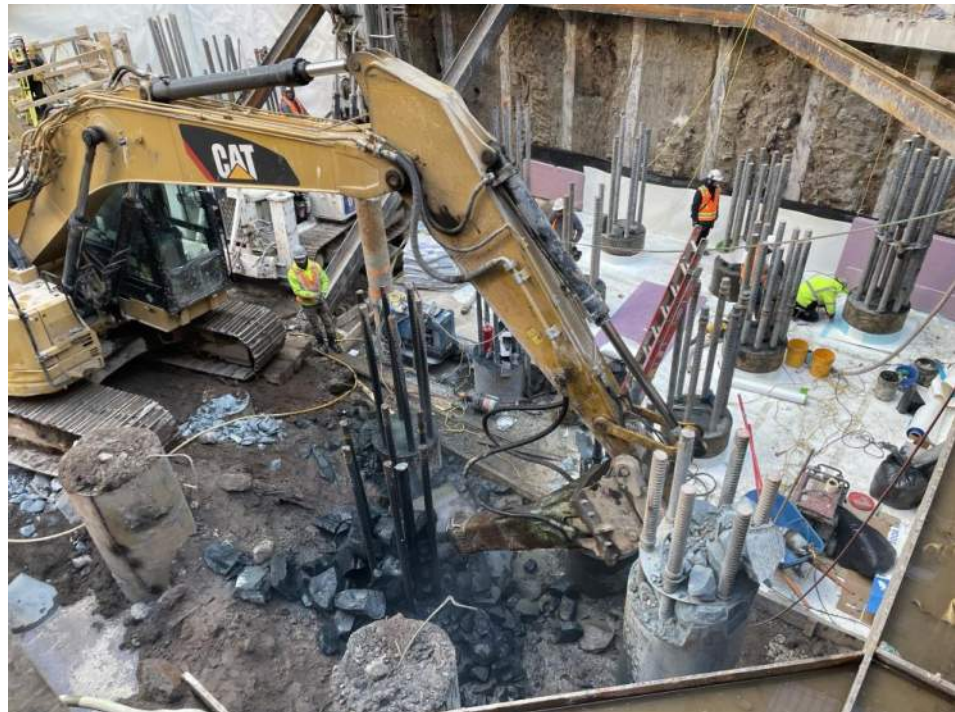
Note: Waste characterization grid areas were developed by PT Consultants and Urban and is shown on this site plan for reference only.

Photo Log

Photo 1: View of Urban excavating soil/fill in WC03_15-20 (facing south).



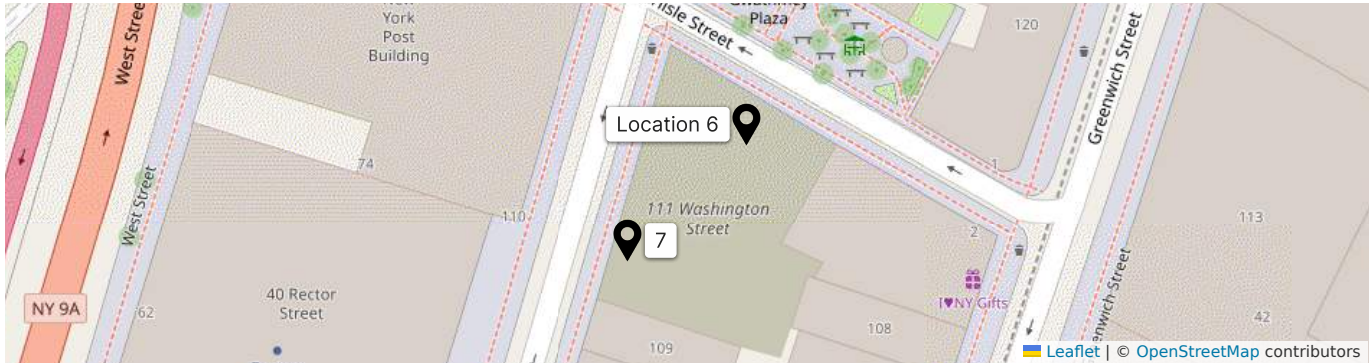
Photo 2: View of Urban removing concrete in the central part of the site while using a hose for dust suppression (facing northeast).



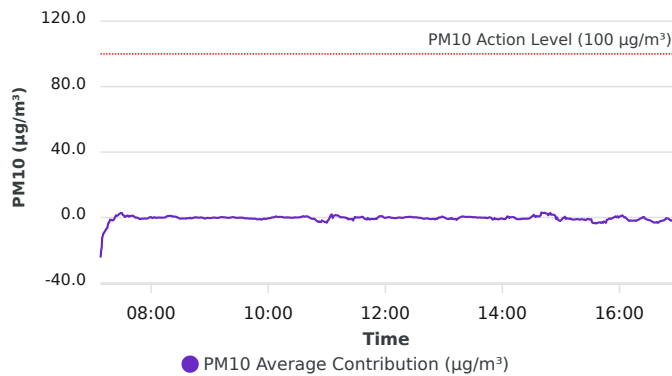
LANGAN	Air Monitoring Report	170695201 - 111 Washington St	
		Report Period	
		From:	12/13/2023 06:00
		To:	12/13/2023 19:00
		PM10 Action Level:	100.0 $\mu\text{g}/\text{m}^3$
VOC Action Level:	5.00 ppm		

Daily Environmental Summary	Windspeed (mph)	Prevailing wind direction
12/13/2023	0.2-1.9	SE

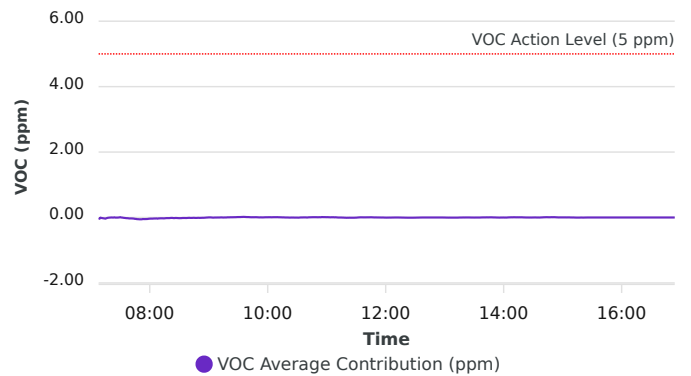
Daily Monitoring Summary	PM10 ($\mu\text{g}/\text{m}^3$)	Time	VOC (ppm)	Time
Min Contribution (15 min avg.) - 12/13/2023	-24.5	07:08	-0.06	07:50
Max Contribution (15 min avg.) - 12/13/2023	3.0	14:40	0.02	09:35



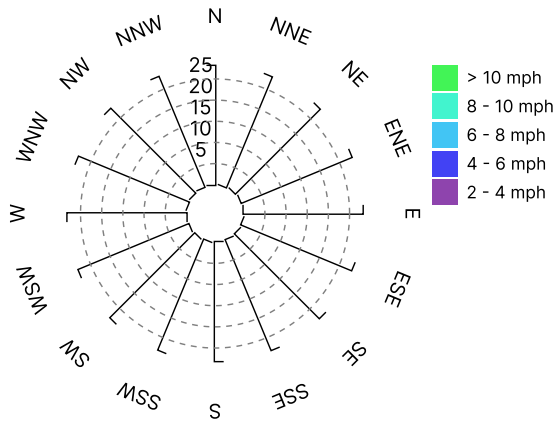
PM10 Average Contribution ($\mu\text{g}/\text{m}^3$)



VOC Average Contribution (ppm)



Contribution wind rose (mph)



Date/Time	Average Upwind PM10 (µg/m³)	Average Downwind PM10 (µg/m³)	Average Contribution PM10 (µg/m³)	Average Upwind VOC (ppm)	Average Downwind VOC (ppm)	Average Contribution VOC (ppm)	Wind Speed 15 min Avg	Wind Direction
12/13/2023 07:08:00	32.0	7.5	-24.5	0.02	0.00	-0.02	0.4	SW
12/13/2023 07:09:00	26.7	7.3	-19.4	0.04	0.00	-0.04	0.4	WSW
12/13/2023 07:10:00	20.3	8.4	-11.9	0.02	0.02	-0.01	0.4	N
12/13/2023 07:11:00	17.9	7.9	-9.9	0.03	0.01	-0.01	0.4	SW
12/13/2023 07:12:00	16.6	7.6	-9.0	0.03	0.01	-0.02	0.5	WSW
12/13/2023 07:13:00	15.4	7.4	-8.0	0.03	0.01	-0.03	0.5	SW
12/13/2023 07:14:00	14.3	7.3	-7.0	0.04	0.01	-0.03	0.5	WSW
12/13/2023 07:15:00	13.6	7.2	-6.3	0.04	0.01	-0.03	0.5	WSW
12/13/2023 07:16:00	12.7	9.1	-3.6	0.04	0.02	-0.02	0.5	E
12/13/2023 07:17:00	12.1	9.4	-2.7	0.04	0.02	-0.01	0.5	ESE
12/13/2023 07:18:00	11.6	10.2	-1.4	0.03	0.03	-0.01	0.5	ENE
12/13/2023 07:19:00	11.9	10.4	-1.4	0.03	0.03	0.00	0.5	NNW
12/13/2023 07:20:00	12.2	10.4	-1.7	0.03	0.03	0.00	0.5	E
12/13/2023 07:21:00	12.0	10.3	-1.7	0.03	0.03	0.00	0.5	ESE
12/13/2023 07:22:00	11.9	10.8	-1.1	0.03	0.03	0.00	0.5	WSW
12/13/2023 07:23:00	10.8	11.0	0.2	0.03	0.03	0.00	0.5	W
12/13/2023 07:24:00	9.9	11.1	1.3	0.02	0.03	0.00	0.5	NNE
12/13/2023 07:25:00	9.8	10.9	1.1	0.03	0.03	0.00	0.5	WSW
12/13/2023 07:26:00	9.6	11.0	1.4	0.03	0.03	0.00	0.5	WSW
12/13/2023 07:27:00	9.4	11.4	2.0	0.03	0.03	0.00	0.6	WSW
12/13/2023 07:28:00	9.2	11.6	2.4	0.03	0.03	0.00	0.6	SW
12/13/2023 07:29:00	9.2	11.9	2.7	0.03	0.03	0.00	0.6	WSW
12/13/2023 07:30:00	9.1	11.8	2.7	0.02	0.03	0.01	0.6	ESE
12/13/2023 07:31:00	9.0	10.6	1.5	0.03	0.03	0.00	0.6	W
12/13/2023 07:32:00	9.0	10.2	1.2	0.03	0.03	0.00	0.6	E
12/13/2023 07:33:00	8.9	9.3	0.4	0.03	0.03	-0.01	0.6	SW
12/13/2023 07:34:00	8.2	8.8	0.6	0.04	0.02	-0.01	0.6	WSW
12/13/2023 07:35:00	7.5	8.6	1.1	0.04	0.02	-0.01	0.6	W
12/13/2023 07:36:00	7.4	8.5	1.1	0.04	0.02	-0.02	0.6	W
12/13/2023 07:37:00	7.2	7.7	0.6	0.04	0.02	-0.02	0.6	W
12/13/2023 07:38:00	6.6	7.6	0.9	0.04	0.02	-0.02	0.6	W
12/13/2023 07:39:00	6.5	7.3	0.8	0.04	0.02	-0.03	0.7	SW

Date/Time	Average Upwind PM10 (µg/m³)	Average Downwind PM10 (µg/m³)	Average Contribution PM10 (µg/m³)	Average Upwind VOC (ppm)	Average Downwind VOC (ppm)	Average Contribution VOC (ppm)	Wind Speed 15 min Avg	Wind Direction
12/13/2023 07:40:00	6.4	7.5	1.1	0.04	0.02	-0.03	0.7	WSW
12/13/2023 07:41:00	6.4	7.5	1.1	0.04	0.02	-0.03	0.7	W
12/13/2023 07:42:00	6.4	7.2	0.8	0.05	0.02	-0.03	0.7	WSW
12/13/2023 07:43:00	6.6	7.0	0.3	0.05	0.01	-0.03	0.6	WSW
12/13/2023 07:44:00	6.8	6.7	-0.1	0.05	0.01	-0.04	0.6	WSW
12/13/2023 07:45:00	6.8	6.7	-0.1	0.05	0.01	-0.04	0.6	WSW
12/13/2023 07:46:00	6.9	6.7	-0.2	0.05	0.01	-0.04	0.6	WSW
12/13/2023 07:47:00	7.1	6.7	-0.4	0.05	0.00	-0.05	0.7	W
12/13/2023 07:48:00	7.6	6.7	-0.9	0.05	0.00	-0.05	0.7	WNW
12/13/2023 07:49:00	7.8	6.8	-0.9	0.05	0.00	-0.05	0.7	WSW
12/13/2023 07:50:00	7.7	7.0	-0.7	0.06	0.00	-0.06	0.7	WNW
12/13/2023 07:51:00	7.6	6.9	-0.7	0.06	0.00	-0.06	0.7	WSW
12/13/2023 07:52:00	7.5	6.8	-0.7	0.06	0.00	-0.06	0.7	SW
12/13/2023 07:53:00	7.5	6.8	-0.6	0.05	0.01	-0.05	0.7	NNE
12/13/2023 07:54:00	7.5	6.9	-0.6	0.06	0.01	-0.05	0.7	WSW
12/13/2023 07:55:00	7.4	6.7	-0.7	0.06	0.01	-0.05	0.8	WSW
12/13/2023 07:56:00	7.3	6.6	-0.6	0.06	0.01	-0.05	0.8	W
12/13/2023 07:57:00	7.0	6.6	-0.4	0.06	0.01	-0.05	0.8	WSW
12/13/2023 07:58:00	6.6	6.6	0.0	0.05	0.01	-0.04	0.8	WSW
12/13/2023 07:59:00	6.4	6.6	0.2	0.05	0.01	-0.04	0.8	ENE
12/13/2023 08:00:00	6.4	6.6	0.2	0.05	0.01	-0.04	0.8	WSW
12/13/2023 08:01:00	6.9	6.7	-0.3	0.05	0.01	-0.04	0.8	WSW
12/13/2023 08:02:00	7.0	6.7	-0.3	0.05	0.01	-0.04	0.9	WSW
12/13/2023 08:03:00	6.7	6.8	0.1	0.05	0.01	-0.04	0.9	WSW
12/13/2023 08:04:00	6.7	6.8	0.0	0.04	0.01	-0.03	0.9	WSW
12/13/2023 08:05:00	6.8	6.6	-0.2	0.04	0.01	-0.03	0.9	W
12/13/2023 08:06:00	6.9	6.7	-0.2	0.04	0.01	-0.03	0.9	WSW
12/13/2023 08:07:00	6.8	6.8	-0.1	0.04	0.01	-0.03	0.9	W
12/13/2023 08:08:00	6.8	6.8	0.0	0.04	0.01	-0.04	0.9	W
12/13/2023 08:09:00	6.8	6.8	-0.1	0.04	0.01	-0.03	0.9	ENE
12/13/2023 08:10:00	6.8	6.7	-0.1	0.04	0.01	-0.03	0.8	WSW
12/13/2023 08:11:00	6.8	6.7	-0.1	0.04	0.01	-0.03	0.8	WSW

Date/Time	Average Upwind PM10 (µg/m³)	Average Downwind PM10 (µg/m³)	Average Contribution PM10 (µg/m³)	Average Upwind VOC (ppm)	Average Downwind VOC (ppm)	Average Contribution VOC (ppm)	Wind Speed 15 min Avg	Wind Direction
12/13/2023 08:12:00	6.8	6.7	-0.1	0.03	0.01	-0.03	0.9	WSW
12/13/2023 08:13:00	6.8	6.7	-0.1	0.03	0.01	-0.03	0.9	WSW
12/13/2023 08:14:00	6.7	6.7	0.0	0.04	0.01	-0.03	0.9	WSW
12/13/2023 08:15:00	6.6	6.8	0.2	0.03	0.01	-0.03	0.9	WSW
12/13/2023 08:16:00	6.1	6.8	0.7	0.03	0.01	-0.02	0.9	E
12/13/2023 08:17:00	5.8	6.7	0.9	0.03	0.01	-0.02	0.9	W
12/13/2023 08:18:00	5.7	6.6	1.0	0.03	0.01	-0.02	0.8	W
12/13/2023 08:19:00	5.6	6.6	1.0	0.03	0.01	-0.02	0.8	WSW
12/13/2023 08:20:00	5.5	6.5	1.0	0.03	0.01	-0.02	0.8	WSW
12/13/2023 08:21:00	5.5	6.4	0.9	0.03	0.01	-0.01	0.8	ESE
12/13/2023 08:22:00	5.7	6.3	0.6	0.02	0.01	-0.01	0.8	ESE
12/13/2023 08:23:00	5.7	6.3	0.6	0.02	0.01	-0.01	0.9	WSW
12/13/2023 08:24:00	5.7	6.3	0.6	0.03	0.01	-0.02	0.8	W
12/13/2023 08:25:00	5.9	6.3	0.5	0.03	0.01	-0.02	0.8	SSW
12/13/2023 08:26:00	6.0	6.3	0.3	0.03	0.01	-0.01	0.8	ENE
12/13/2023 08:27:00	6.3	6.3	0.0	0.03	0.01	-0.01	0.7	W
12/13/2023 08:28:00	6.5	6.2	-0.3	0.03	0.01	-0.02	0.7	SSW
12/13/2023 08:29:00	6.8	6.2	-0.6	0.03	0.01	-0.02	0.7	SSW
12/13/2023 08:30:00	6.8	6.1	-0.7	0.03	0.01	-0.02	0.7	W
12/13/2023 08:31:00	6.8	6.1	-0.7	0.03	0.01	-0.02	0.7	E
12/13/2023 08:32:00	6.7	6.2	-0.6	0.03	0.01	-0.02	0.7	WSW
12/13/2023 08:33:00	6.7	6.1	-0.6	0.03	0.01	-0.02	0.7	ENE
12/13/2023 08:34:00	6.6	6.0	-0.6	0.02	0.01	-0.01	0.7	S
12/13/2023 08:35:00	6.7	6.0	-0.6	0.02	0.01	-0.01	0.7	SSE
12/13/2023 08:36:00	6.8	6.1	-0.7	0.02	0.01	-0.01	0.7	ESE
12/13/2023 08:37:00	6.7	6.3	-0.4	0.03	0.01	-0.02	0.7	W
12/13/2023 08:38:00	6.7	6.3	-0.4	0.02	0.01	-0.01	0.6	SE
12/13/2023 08:39:00	6.7	6.3	-0.4	0.02	0.01	-0.01	0.6	SSE
12/13/2023 08:40:00	6.7	6.5	-0.2	0.02	0.01	-0.01	0.6	ESE
12/13/2023 08:41:00	6.9	6.4	-0.5	0.02	0.01	-0.01	0.7	WSW
12/13/2023 08:42:00	6.8	6.4	-0.4	0.02	0.01	-0.01	0.6	NW
12/13/2023 08:43:00	6.7	6.4	-0.2	0.02	0.01	-0.01	0.7	WNW

Date/Time	Average Upwind PM10 (µg/m³)	Average Downwind PM10 (µg/m³)	Average Contribution PM10 (µg/m³)	Average Upwind VOC (ppm)	Average Downwind VOC (ppm)	Average Contribution VOC (ppm)	Wind Speed 15 min Avg	Wind Direction
12/13/2023 08:44:00	6.5	6.5	-0.1	0.02	0.01	-0.01	0.7	SSW
12/13/2023 08:45:00	6.5	6.7	0.1	0.02	0.01	-0.01	0.7	SSW
12/13/2023 08:46:00	6.6	6.7	0.1	0.02	0.01	-0.01	0.7	SW
12/13/2023 08:47:00	6.7	6.7	0.0	0.02	0.01	-0.01	0.7	WSW
12/13/2023 08:48:00	6.7	6.7	0.0	0.02	0.01	-0.01	0.7	NNE
12/13/2023 08:49:00	6.8	6.7	-0.1	0.02	0.01	-0.01	0.7	ESE
12/13/2023 08:50:00	6.9	6.7	-0.1	0.02	0.01	-0.01	0.7	SSW
12/13/2023 08:51:00	6.7	6.8	0.1	0.02	0.01	-0.01	0.7	SSE
12/13/2023 08:52:00	6.7	6.6	0.0	0.02	0.01	-0.01	0.7	ENE
12/13/2023 08:53:00	6.7	6.5	-0.2	0.02	0.01	-0.01	0.6	ESE
12/13/2023 08:54:00	6.8	6.4	-0.4	0.01	0.01	-0.01	0.6	E
12/13/2023 08:55:00	6.9	6.2	-0.7	0.01	0.01	-0.01	0.7	E
12/13/2023 08:56:00	6.6	6.2	-0.4	0.01	0.01	-0.01	0.7	ENE
12/13/2023 08:57:00	6.6	6.2	-0.4	0.01	0.01	0.00	0.7	SW
12/13/2023 08:58:00	6.6	6.4	-0.2	0.01	0.01	0.00	0.7	ESE
12/13/2023 08:59:00	6.7	6.4	-0.3	0.01	0.01	0.00	0.7	W
12/13/2023 09:00:00	6.7	6.3	-0.4	0.01	0.01	0.00	0.7	E
12/13/2023 09:01:00	6.6	6.3	-0.3	0.01	0.01	0.00	0.7	SSW
12/13/2023 09:02:00	6.6	6.4	-0.3	0.01	0.01	0.00	0.7	S
12/13/2023 09:03:00	6.6	6.5	-0.1	0.01	0.01	0.00	0.7	WSW
12/13/2023 09:04:00	6.7	6.6	-0.1	0.01	0.01	0.00	0.7	WSW
12/13/2023 09:05:00	6.7	6.6	0.0	0.01	0.01	0.00	0.7	SSE
12/13/2023 09:06:00	6.7	6.6	-0.2	0.01	0.01	0.00	0.7	ENE
12/13/2023 09:07:00	7.1	6.8	-0.2	0.01	0.01	0.00	0.7	ESE
12/13/2023 09:08:00	7.4	7.1	-0.3	0.01	0.01	0.00	0.7	E
12/13/2023 09:09:00	7.3	7.2	-0.2	0.01	0.01	0.00	0.7	E
12/13/2023 09:10:00	7.4	7.3	-0.1	0.01	0.01	0.00	0.7	E
12/13/2023 09:11:00	7.5	7.6	0.2	0.01	0.01	0.00	0.7	ESE
12/13/2023 09:12:00	7.5	7.7	0.2	0.01	0.01	0.00	0.7	E
12/13/2023 09:13:00	7.5	7.7	0.2	0.01	0.01	0.00	0.7	NE
12/13/2023 09:14:00	7.5	7.7	0.2	0.01	0.01	0.00	0.6	SW
12/13/2023 09:15:00	7.7	7.7	0.1	0.01	0.01	0.00	0.6	SSE

Date/Time	Average Upwind PM10 ($\mu\text{g}/\text{m}^3$)	Average Downwind PM10 ($\mu\text{g}/\text{m}^3$)	Average Contribution PM10 ($\mu\text{g}/\text{m}^3$)	Average Upwind VOC (ppm)	Average Downwind VOC (ppm)	Average Contribution VOC (ppm)	Wind Speed 15 min Avg	Wind Direction
12/13/2023 09:16:00	7.8	7.8	0.1	0.01	0.01	0.00	0.6	E
12/13/2023 09:17:00	7.9	7.8	-0.1	0.01	0.01	0.00	0.6	SW
12/13/2023 09:18:00	8.0	7.8	-0.2	0.01	0.01	0.00	0.6	WSW
12/13/2023 09:19:00	7.9	7.7	-0.2	0.01	0.01	0.01	0.6	NNE
12/13/2023 09:20:00	8.0	7.8	-0.2	0.01	0.01	0.01	0.5	SSE
12/13/2023 09:21:00	8.0	7.9	-0.1	0.01	0.01	0.01	0.5	E
12/13/2023 09:22:00	7.7	7.7	0.1	0.01	0.01	0.01	0.5	E
12/13/2023 09:23:00	7.5	7.6	0.2	0.01	0.01	0.01	0.5	ESE
12/13/2023 09:24:00	7.5	7.7	0.2	0.01	0.01	0.01	0.5	ENE
12/13/2023 09:25:00	7.4	7.6	0.1	0.01	0.01	0.01	0.5	E
12/13/2023 09:26:00	7.4	7.3	-0.1	0.01	0.02	0.01	0.5	E
12/13/2023 09:27:00	7.5	7.3	-0.1	0.01	0.02	0.01	0.5	NE
12/13/2023 09:28:00	7.5	7.2	-0.3	0.01	0.02	0.01	0.5	ESE
12/13/2023 09:29:00	7.4	7.2	-0.2	0.01	0.02	0.01	0.5	ESE
12/13/2023 09:30:00	7.3	7.2	-0.1	0.01	0.02	0.01	0.5	WSW
12/13/2023 09:31:00	7.3	7.2	-0.1	0.01	0.02	0.01	0.5	E
12/13/2023 09:32:00	7.2	7.2	0.0	0.01	0.02	0.01	0.5	W
12/13/2023 09:33:00	7.3	7.2	-0.1	0.01	0.02	0.02	0.5	SE
12/13/2023 09:34:00	7.4	7.2	-0.2	0.01	0.02	0.02	0.5	E
12/13/2023 09:35:00	7.5	7.2	-0.3	0.00	0.02	0.02	0.5	ENE
12/13/2023 09:36:00	7.5	7.0	-0.5	0.00	0.02	0.02	0.5	ESE
12/13/2023 09:37:00	7.5	6.9	-0.6	0.00	0.02	0.02	0.6	E
12/13/2023 09:38:00	7.4	6.9	-0.4	0.00	0.02	0.01	0.6	SW
12/13/2023 09:39:00	7.4	6.8	-0.6	0.00	0.02	0.01	0.6	N
12/13/2023 09:40:00	7.4	6.8	-0.6	0.00	0.02	0.01	0.6	ESE
12/13/2023 09:41:00	7.4	6.7	-0.7	0.00	0.02	0.01	0.6	E
12/13/2023 09:42:00	7.3	6.8	-0.6	0.01	0.01	0.01	0.6	SSE
12/13/2023 09:43:00	7.4	6.7	-0.7	0.01	0.01	0.01	0.6	ESE
12/13/2023 09:44:00	7.4	6.7	-0.8	0.01	0.01	0.01	0.6	E
12/13/2023 09:45:00	7.4	6.7	-0.8	0.00	0.01	0.01	0.6	NE
12/13/2023 09:46:00	7.4	6.7	-0.7	0.00	0.01	0.01	0.6	SW
12/13/2023 09:47:00	7.4	6.6	-0.8	0.00	0.01	0.01	0.6	NNE

Date/Time	Average Upwind PM10 (µg/m³)	Average Downwind PM10 (µg/m³)	Average Contribution PM10 (µg/m³)	Average Upwind VOC (ppm)	Average Downwind VOC (ppm)	Average Contribution VOC (ppm)	Wind Speed 15 min Avg	Wind Direction
12/13/2023 09:48:00	7.7	6.6	-1.1	0.00	0.01	0.01	0.6	E
12/13/2023 09:49:00	7.8	6.7	-1.1	0.00	0.01	0.01	0.6	SE
12/13/2023 09:50:00	8.0	6.8	-1.1	0.00	0.01	0.01	0.6	SSE
12/13/2023 09:51:00	8.1	7.0	-1.1	0.00	0.01	0.00	0.6	SSE
12/13/2023 09:52:00	8.2	7.2	-1.0	0.00	0.01	0.00	0.6	E
12/13/2023 09:53:00	8.5	7.2	-1.3	0.00	0.01	0.01	0.6	E
12/13/2023 09:54:00	8.4	7.4	-1.0	0.00	0.01	0.00	0.6	W
12/13/2023 09:55:00	8.5	7.6	-0.8	0.00	0.01	0.00	0.6	ENE
12/13/2023 09:56:00	8.5	7.8	-0.7	0.00	0.01	0.00	0.6	ENE
12/13/2023 09:57:00	8.8	7.8	-1.0	0.00	0.01	0.01	0.6	NE
12/13/2023 09:58:00	8.8	8.0	-0.8	0.00	0.01	0.01	0.6	E
12/13/2023 09:59:00	8.8	8.1	-0.6	0.00	0.01	0.01	0.6	ESE
12/13/2023 10:00:00	8.7	8.2	-0.5	0.00	0.01	0.01	0.7	SE
12/13/2023 10:01:00	8.8	8.4	-0.4	0.00	0.01	0.01	0.7	ESE
12/13/2023 10:02:00	8.9	8.5	-0.4	0.00	0.01	0.01	0.7	E
12/13/2023 10:03:00	8.7	8.6	-0.1	0.00	0.01	0.01	0.7	ENE
12/13/2023 10:04:00	8.5	8.5	-0.1	0.00	0.01	0.01	0.8	W
12/13/2023 10:05:00	8.3	8.4	0.1	0.00	0.01	0.01	0.8	NE
12/13/2023 10:06:00	8.1	8.3	0.2	0.00	0.01	0.01	0.8	E
12/13/2023 10:07:00	8.0	8.4	0.3	0.00	0.01	0.01	0.8	SE
12/13/2023 10:08:00	7.9	8.5	0.7	0.00	0.01	0.01	0.8	ESE
12/13/2023 10:09:00	7.9	8.3	0.4	0.00	0.01	0.01	0.8	W
12/13/2023 10:10:00	7.8	8.2	0.3	0.00	0.01	0.01	0.8	E
12/13/2023 10:11:00	7.6	8.0	0.3	0.00	0.01	0.01	0.8	SSE
12/13/2023 10:12:00	7.5	7.8	0.4	0.00	0.01	0.01	0.8	ENE
12/13/2023 10:13:00	7.3	7.7	0.4	0.00	0.01	0.01	0.8	ESE
12/13/2023 10:14:00	7.2	7.5	0.3	0.00	0.01	0.01	0.9	WSW
12/13/2023 10:15:00	7.2	7.4	0.2	0.01	0.01	0.00	0.8	WSW
12/13/2023 10:16:00	7.2	7.2	0.0	0.01	0.01	0.00	0.8	NNW
12/13/2023 10:17:00	7.1	7.1	0.0	0.01	0.01	0.00	0.8	WSW
12/13/2023 10:18:00	7.0	7.0	0.0	0.01	0.01	0.00	0.8	WSW
12/13/2023 10:19:00	6.8	7.0	0.1	0.01	0.01	0.00	0.8	SSE

Date/Time	Average Upwind PM10 (µg/m³)	Average Downwind PM10 (µg/m³)	Average Contribution PM10 (µg/m³)	Average Upwind VOC (ppm)	Average Downwind VOC (ppm)	Average Contribution VOC (ppm)	Wind Speed 15 min Avg	Wind Direction
12/13/2023 10:20:00	6.8	6.8	0.0	0.01	0.01	0.00	0.8	SE
12/13/2023 10:21:00	6.8	6.8	0.0	0.01	0.01	0.00	0.8	S
12/13/2023 10:22:00	6.6	6.6	0.0	0.01	0.01	0.00	0.8	SSE
12/13/2023 10:23:00	6.5	6.3	-0.2	0.01	0.01	0.00	0.8	E
12/13/2023 10:24:00	6.4	6.2	-0.2	0.01	0.01	0.00	0.8	E
12/13/2023 10:25:00	6.4	6.3	-0.1	0.01	0.01	0.00	0.8	ESE
12/13/2023 10:26:00	6.5	6.3	-0.1	0.01	0.01	0.00	0.8	WSW
12/13/2023 10:27:00	6.4	6.5	0.1	0.01	0.01	0.00	0.8	WSW
12/13/2023 10:28:00	6.4	6.5	0.0	0.01	0.01	0.00	0.8	ESE
12/13/2023 10:29:00	6.5	6.5	0.0	0.01	0.01	0.00	0.8	WSW
12/13/2023 10:30:00	6.7	6.7	0.0	0.01	0.01	0.00	0.8	SW
12/13/2023 10:31:00	6.9	6.9	0.0	0.01	0.00	-0.01	0.8	SW
12/13/2023 10:32:00	7.0	7.1	0.1	0.01	0.01	0.00	0.8	NE
12/13/2023 10:33:00	7.0	7.3	0.3	0.01	0.01	0.00	0.8	E
12/13/2023 10:34:00	7.1	7.4	0.3	0.01	0.01	0.00	0.7	ESE
12/13/2023 10:35:00	7.0	7.7	0.7	0.01	0.01	0.00	0.7	E
12/13/2023 10:36:00	7.0	7.8	0.8	0.01	0.01	0.00	0.7	ENE
12/13/2023 10:37:00	7.3	7.8	0.5	0.01	0.01	0.00	0.7	W
12/13/2023 10:38:00	7.3	7.9	0.6	0.01	0.01	0.00	0.7	NE
12/13/2023 10:39:00	7.3	8.0	0.7	0.01	0.01	0.00	0.7	E
12/13/2023 10:40:00	7.3	7.9	0.6	0.01	0.01	0.00	0.7	SSW
12/13/2023 10:41:00	7.3	7.9	0.5	0.01	0.01	0.00	0.7	E
12/13/2023 10:42:00	7.7	7.7	0.0	0.01	0.01	0.01	0.7	E
12/13/2023 10:43:00	8.0	7.7	-0.3	0.01	0.01	0.01	0.7	NE
12/13/2023 10:44:00	8.3	7.7	-0.6	0.01	0.01	0.01	0.7	E
12/13/2023 10:45:00	8.3	7.4	-0.9	0.01	0.01	0.01	0.7	ESE
12/13/2023 10:46:00	7.9	7.2	-0.8	0.01	0.01	0.01	0.7	SW
12/13/2023 10:47:00	7.9	7.2	-0.7	0.01	0.01	0.01	0.8	ESE
12/13/2023 10:48:00	8.2	7.0	-1.2	0.01	0.01	0.01	0.8	ESE
12/13/2023 10:49:00	8.7	7.0	-1.8	0.01	0.01	0.01	0.8	E
12/13/2023 10:50:00	9.2	6.9	-2.2	0.01	0.01	0.01	0.9	SW
12/13/2023 10:51:00	9.5	6.8	-2.7	0.01	0.01	0.01	0.9	W

Date/Time	Average Upwind PM10 (µg/m³)	Average Downwind PM10 (µg/m³)	Average Contribution PM10 (µg/m³)	Average Upwind VOC (ppm)	Average Downwind VOC (ppm)	Average Contribution VOC (ppm)	Wind Speed 15 min Avg	Wind Direction
12/13/2023 10:52:00	9.4	6.9	-2.4	0.01	0.01	0.01	0.9	ESE
12/13/2023 10:53:00	9.9	7.1	-2.8	0.01	0.02	0.01	0.9	E
12/13/2023 10:54:00	10.6	7.8	-2.8	0.01	0.01	0.01	0.9	WSW
12/13/2023 10:55:00	10.6	8.8	-1.8	0.01	0.02	0.01	0.9	NE
12/13/2023 10:56:00	11.6	9.4	-2.3	0.01	0.02	0.01	0.9	E
12/13/2023 10:57:00	12.0	9.6	-2.5	0.01	0.02	0.01	0.9	E
12/13/2023 10:58:00	12.5	9.7	-2.7	0.01	0.02	0.01	0.9	E
12/13/2023 10:59:00	12.8	10.0	-2.8	0.01	0.02	0.01	1.0	ENE
12/13/2023 11:00:00	13.2	10.1	-3.1	0.01	0.02	0.01	1.0	E
12/13/2023 11:01:00	13.2	11.4	-1.8	0.01	0.02	0.01	0.9	WSW
12/13/2023 11:02:00				0.01	0.02	0.01	0.9	SSW
12/13/2023 11:03:00				0.01	0.02	0.01	0.9	E
12/13/2023 11:04:00				0.01	0.02	0.01	0.9	S
12/13/2023 11:05:00	7.0	8.8	1.8	0.01	0.02	0.01	0.9	E
12/13/2023 11:06:00	7.4	7.2	-0.2	0.01	0.02	0.01	0.9	SSW
12/13/2023 11:07:00	7.0	8.0	1.0	0.01	0.02	0.01	0.9	E
12/13/2023 11:08:00	7.1	8.3	1.3	0.01	0.02	0.00	0.9	WSW
12/13/2023 11:09:00	6.9	8.4	1.5	0.01	0.02	0.01	0.9	SE
12/13/2023 11:10:00	6.8	8.1	1.3	0.01	0.01	0.00	0.9	SW
12/13/2023 11:11:00	6.6	7.9	1.3	0.01	0.01	0.00	0.9	WSW
12/13/2023 11:12:00	6.5	7.6	1.1	0.01	0.01	0.00	0.9	NE
12/13/2023 11:13:00	6.8	7.4	0.6	0.01	0.01	0.00	0.9	S
12/13/2023 11:14:00	7.1	7.3	0.1	0.01	0.01	0.00	0.9	WSW
12/13/2023 11:15:00	7.1	7.3	0.2	0.01	0.01	0.00	0.9	WSW
12/13/2023 11:16:00	7.0	7.2	0.2	0.01	0.01	0.00	1.0	WSW
12/13/2023 11:17:00	7.0	7.1	0.1	0.01	0.01	0.00	1.0	WSW
12/13/2023 11:18:00	7.1	7.1	0.1	0.01	0.01	-0.01	1.0	W
12/13/2023 11:19:00	7.1	7.0	-0.1	0.01	0.01	-0.01	1.0	W
12/13/2023 11:20:00	7.3	6.8	-0.5	0.01	0.00	-0.01	1.0	WNW
12/13/2023 11:21:00	7.2	6.8	-0.4	0.01	0.00	-0.01	1.0	E
12/13/2023 11:22:00	7.6	6.5	-1.1	0.01	0.00	-0.01	1.0	ENE
12/13/2023 11:23:00	7.5	6.5	-0.9	0.01	0.00	-0.01	1.0	W

Date/Time	Average Upwind PM10 (µg/m³)	Average Downwind PM10 (µg/m³)	Average Contribution PM10 (µg/m³)	Average Upwind VOC (ppm)	Average Downwind VOC (ppm)	Average Contribution VOC (ppm)	Wind Speed 15 min Avg	Wind Direction
12/13/2023 11:24:00	7.4	6.4	-1.0	0.01	0.00	-0.01	1.0	WSW
12/13/2023 11:25:00	7.4	6.4	-1.0	0.01	0.00	-0.01	0.9	WSW
12/13/2023 11:26:00	7.5	6.6	-0.8	0.01	0.00	-0.01	0.9	ESE
12/13/2023 11:27:00	8.4	6.7	-1.8	0.01	0.00	-0.01	0.9	WSW
12/13/2023 11:28:00	8.2	7.7	-0.5	0.01	0.00	-0.01	1.0	ENE
12/13/2023 11:29:00	8.0	8.3	0.3	0.01	0.00	-0.01	0.9	E
12/13/2023 11:30:00	8.2	8.3	0.0	0.01	0.01	-0.01	0.9	SSE
12/13/2023 11:31:00	8.3	8.3	0.0	0.01	0.01	0.00	0.9	SE
12/13/2023 11:32:00	8.2	8.3	0.1	0.01	0.01	0.00	0.9	ESE
12/13/2023 11:33:00	8.2	8.2	0.0	0.01	0.01	0.00	0.9	E
12/13/2023 11:34:00	8.1	8.2	0.0	0.00	0.01	0.01	0.9	SE
12/13/2023 11:35:00	8.0	8.2	0.2	0.00	0.01	0.01	0.9	WSW
12/13/2023 11:36:00	7.9	8.4	0.5	0.00	0.01	0.01	0.9	E
12/13/2023 11:37:00	8.1	8.4	0.3	0.00	0.01	0.00	0.9	W
12/13/2023 11:38:00	8.6	8.3	-0.4	0.00	0.01	0.00	0.9	SW
12/13/2023 11:39:00	9.1	8.3	-0.8	0.00	0.01	0.00	1.0	WSW
12/13/2023 11:40:00	9.3	8.3	-1.0	0.00	0.01	0.00	1.0	WSW
12/13/2023 11:41:00	9.4	8.2	-1.2	0.00	0.01	0.01	1.0	ENE
12/13/2023 11:42:00	8.6	8.2	-0.4	0.00	0.01	0.01	1.0	SW
12/13/2023 11:43:00	8.6	7.6	-0.9	0.00	0.01	0.01	1.0	ESE
12/13/2023 11:44:00	8.6	7.3	-1.3	0.00	0.01	0.01	1.0	ESE
12/13/2023 11:45:00	8.4	7.5	-0.9	0.00	0.01	0.01	1.0	SE
12/13/2023 11:46:00	8.6	7.6	-0.9	0.00	0.01	0.01	1.0	ESE
12/13/2023 11:47:00	8.7	7.8	-0.9	0.00	0.01	0.00	1.1	WSW
12/13/2023 11:48:00	8.9	8.0	-0.9	0.00	0.01	0.00	1.1	W
12/13/2023 11:49:00	9.1	8.2	-1.0	0.00	0.01	0.00	1.1	W
12/13/2023 11:50:00	9.0	8.3	-0.7	0.00	0.01	0.00	1.1	ENE
12/13/2023 11:51:00	9.0	8.1	-0.9	0.00	0.01	0.00	1.1	WSW
12/13/2023 11:52:00	8.3	8.1	-0.1	0.00	0.01	0.00	1.1	WSW
12/13/2023 11:53:00	7.8	8.1	0.3	0.01	0.01	0.00	1.1	SW
12/13/2023 11:54:00	7.2	8.0	0.8	0.01	0.01	0.00	1.1	WSW
12/13/2023 11:55:00	7.0	7.8	0.8	0.01	0.01	0.00	1.0	E

Date/Time	Average Upwind PM10 (µg/m³)	Average Downwind PM10 (µg/m³)	Average Contribution PM10 (µg/m³)	Average Upwind VOC (ppm)	Average Downwind VOC (ppm)	Average Contribution VOC (ppm)	Wind Speed 15 min Avg	Wind Direction
12/13/2023 11:56:00	6.9	7.7	0.7	0.01	0.01	0.00	1.0	ESE
12/13/2023 11:57:00	6.7	7.5	0.8	0.01	0.01	0.00	1.1	E
12/13/2023 11:58:00	6.7	6.9	0.2	0.01	0.00	0.00	1.1	ESE
12/13/2023 11:59:00	6.7	6.5	-0.1	0.01	0.00	0.00	1.0	NE
12/13/2023 12:00:00	6.4	6.2	-0.2	0.01	0.00	0.00	1.0	WSW
12/13/2023 12:01:00	6.1	6.0	-0.1	0.01	0.00	0.00	1.0	W
12/13/2023 12:02:00	5.7	5.7	0.0	0.00	0.00	0.00	1.0	SSW
12/13/2023 12:03:00	5.3	5.5	0.2	0.00	0.00	0.00	0.9	SW
12/13/2023 12:04:00	5.0	5.3	0.2	0.00	0.00	0.00	0.9	ESE
12/13/2023 12:05:00	5.0	5.0	0.1	0.00	0.00	0.00	0.9	ENE
12/13/2023 12:06:00	5.0	4.9	-0.1	0.00	0.00	0.00	0.9	E
12/13/2023 12:07:00	5.0	4.8	-0.3	0.00	0.00	0.00	0.9	ENE
12/13/2023 12:08:00	5.0	4.7	-0.2	0.00	0.00	0.00	0.9	SSE
12/13/2023 12:09:00	5.0	4.7	-0.4	0.00	0.00	0.00	0.9	E
12/13/2023 12:10:00	5.0	4.6	-0.4	0.00	0.00	0.00	0.8	ENE
12/13/2023 12:11:00	5.0	4.6	-0.4	0.00	0.00	0.00	0.9	E
12/13/2023 12:12:00	4.8	4.6	-0.2	0.00	0.00	0.00	0.8	SSW
12/13/2023 12:13:00	4.7	4.6	-0.1	0.00	0.00	0.00	0.9	SW
12/13/2023 12:14:00	4.7	4.7	0.0	0.00	0.00	0.00	0.9	SW
12/13/2023 12:15:00	4.7	4.6	-0.1	0.00	0.00	0.00	0.9	WSW
12/13/2023 12:16:00	4.7	4.6	-0.1	0.00	0.00	0.00	0.9	WSW
12/13/2023 12:17:00	4.8	4.6	-0.2	0.00	0.00	0.00	0.9	WSW
12/13/2023 12:18:00	4.8	4.6	-0.2	0.00	0.00	0.00	0.9	WSW
12/13/2023 12:19:00	4.8	4.8	0.0	0.00	0.00	0.00	0.9	WSW
12/13/2023 12:20:00	4.8	4.8	0.1	0.01	0.00	-0.01	1.0	WSW
12/13/2023 12:21:00	4.7	4.9	0.2	0.01	0.00	-0.01	1.0	WSW
12/13/2023 12:22:00	4.7	5.0	0.3	0.01	0.00	-0.01	1.1	W
12/13/2023 12:23:00	4.7	5.0	0.3	0.01	0.00	-0.01	1.1	W
12/13/2023 12:24:00	4.6	5.0	0.4	0.01	0.00	-0.01	1.1	WSW
12/13/2023 12:25:00	4.7	5.1	0.4	0.01	0.00	-0.01	1.2	ESE
12/13/2023 12:26:00	4.7	5.1	0.4	0.01	0.00	-0.01	1.1	E
12/13/2023 12:27:00	4.7	5.0	0.3	0.01	0.00	-0.01	1.1	E

Date/Time	Average Upwind PM10 (µg/m³)	Average Downwind PM10 (µg/m³)	Average Contribution PM10 (µg/m³)	Average Upwind VOC (ppm)	Average Downwind VOC (ppm)	Average Contribution VOC (ppm)	Wind Speed 15 min Avg	Wind Direction
12/13/2023 12:28:00	4.8	5.0	0.2	0.01	0.00	-0.01	1.2	E
12/13/2023 12:29:00	4.9	4.9	0.1	0.01	0.00	-0.01	1.2	E
12/13/2023 12:30:00	4.8	5.0	0.2	0.01	0.00	-0.01	1.2	SSE
12/13/2023 12:31:00	5.0	5.1	0.1	0.00	0.00	0.00	1.2	ESE
12/13/2023 12:32:00	5.1	5.2	0.1	0.00	0.00	0.00	1.2	W
12/13/2023 12:33:00	5.1	5.1	0.0	0.00	0.00	0.00	1.2	ESE
12/13/2023 12:34:00	5.2	5.0	-0.2	0.00	0.00	0.00	1.1	E
12/13/2023 12:35:00	5.2	5.0	-0.2	0.00	0.00	0.00	1.1	ENE
12/13/2023 12:36:00	5.3	5.1	-0.2	0.00	0.00	0.00	1.1	E
12/13/2023 12:37:00	5.4	5.0	-0.4	0.00	0.00	0.00	1.0	NNE
12/13/2023 12:38:00	5.6	5.0	-0.6	0.00	0.00	0.00	1.0	SSE
12/13/2023 12:39:00	5.6	4.9	-0.7	0.00	0.00	0.00	1.0	WNW
12/13/2023 12:40:00	5.7	4.9	-0.8	0.00	0.00	0.00	1.0	WSW
12/13/2023 12:41:00	5.6	5.0	-0.6	0.00	0.00	0.00	1.0	E
12/13/2023 12:42:00	5.7	5.0	-0.6	0.00	0.00	0.00	1.0	E
12/13/2023 12:43:00	5.8	5.3	-0.5	0.00	0.00	0.00	1.0	S
12/13/2023 12:44:00	6.0	5.4	-0.6	0.00	0.00	0.00	1.0	E
12/13/2023 12:45:00	6.4	5.5	-0.9	0.00	0.00	0.00	1.0	SE
12/13/2023 12:46:00	6.6	5.6	-1.0	0.00	0.00	0.00	0.9	E
12/13/2023 12:47:00	6.7	5.7	-1.0	0.00	0.00	0.00	0.9	E
12/13/2023 12:48:00	6.7	5.8	-0.9	0.00	0.00	0.00	0.9	E
12/13/2023 12:49:00	6.8	6.0	-0.8	0.00	0.00	0.00	0.9	S
12/13/2023 12:50:00	7.3	6.5	-0.8	0.00	0.00	0.00	0.9	SW
12/13/2023 12:51:00	7.9	6.8	-1.1	0.00	0.00	0.00	0.9	W
12/13/2023 12:52:00	8.0	7.2	-0.7	0.00	0.00	0.00	1.0	NE
12/13/2023 12:53:00	8.3	7.5	-0.9	0.00	0.00	0.00	0.9	SSW
12/13/2023 12:54:00	8.4	8.1	-0.3	0.00	0.00	0.00	0.9	ENE
12/13/2023 12:55:00	8.3	8.3	0.1	0.00	0.00	0.00	0.9	E
12/13/2023 12:56:00	8.4	8.4	-0.1	0.00	0.00	0.00	0.9	WSW
12/13/2023 12:57:00	8.4	8.5	0.1	0.00	0.00	0.00	0.9	ESE
12/13/2023 12:58:00	8.3	8.9	0.6	0.00	0.00	0.00	0.9	ENE
12/13/2023 12:59:00	8.5	8.8	0.4	0.00	0.00	0.00	0.9	SSE

Date/Time	Average Upwind PM10 (µg/m³)	Average Downwind PM10 (µg/m³)	Average Contribution PM10 (µg/m³)	Average Upwind VOC (ppm)	Average Downwind VOC (ppm)	Average Contribution VOC (ppm)	Wind Speed 15 min Avg	Wind Direction
12/13/2023 13:00:00	8.6	8.8	0.1	0.00	0.00	0.00	0.9	SW
12/13/2023 13:01:00	8.7	8.6	-0.1	0.00	0.00	0.00	0.9	W
12/13/2023 13:02:00	9.0	8.4	-0.5	0.00	0.00	0.00	0.9	W
12/13/2023 13:03:00	9.2	8.4	-0.8	0.00	0.00	0.00	1.0	WSW
12/13/2023 13:04:00	9.3	8.4	-0.9	0.00	0.00	0.00	1.0	S
12/13/2023 13:05:00	9.1	8.1	-0.9	0.00	0.00	0.00	1.0	E
12/13/2023 13:06:00	8.4	7.9	-0.6	0.01	0.00	0.00	0.9	SSE
12/13/2023 13:07:00	8.3	7.5	-0.8	0.01	0.00	0.00	0.9	E
12/13/2023 13:08:00	7.7	7.4	-0.4	0.01	0.00	0.00	0.9	E
12/13/2023 13:09:00	7.7	6.9	-0.8	0.01	0.00	0.00	0.9	NE
12/13/2023 13:10:00	7.7	6.7	-1.0	0.01	0.00	0.00	0.9	W
12/13/2023 13:11:00	7.5	6.6	-0.9	0.01	0.00	0.00	0.9	E
12/13/2023 13:12:00	7.4	6.4	-1.0	0.01	0.00	0.00	0.9	E
12/13/2023 13:13:00	7.3	5.9	-1.4	0.01	0.00	0.00	0.9	ENE
12/13/2023 13:14:00	6.9	6.0	-0.9	0.00	0.00	0.00	0.9	ENE
12/13/2023 13:15:00	6.5	6.2	-0.4	0.00	0.00	0.00	1.0	E
12/13/2023 13:16:00	6.2	6.2	-0.1	0.00	0.00	0.00	1.0	SSE
12/13/2023 13:17:00	6.0	6.2	0.1	0.00	0.00	0.00	0.9	WSW
12/13/2023 13:18:00	5.7	6.2	0.5	0.00	0.00	0.00	0.9	E
12/13/2023 13:19:00	5.4	6.1	0.7	0.00	0.00	0.00	0.9	E
12/13/2023 13:20:00	5.3	5.9	0.6	0.00	0.00	0.00	0.9	SW
12/13/2023 13:21:00	5.5	5.9	0.5	0.00	0.00	0.00	0.9	W
12/13/2023 13:22:00	5.6	6.0	0.3	0.00	0.00	0.00	0.9	E
12/13/2023 13:23:00	5.7	6.0	0.3	0.00	0.00	0.00	0.9	SSE
12/13/2023 13:24:00	5.8	6.1	0.4	0.00	0.00	0.00	0.9	ESE
12/13/2023 13:25:00	5.8	6.2	0.4	0.00	0.00	0.00	0.9	WSW
12/13/2023 13:26:00	5.9	6.3	0.4	0.00	0.00	0.00	0.9	SSW
12/13/2023 13:27:00	5.9	6.3	0.4	0.00	0.00	0.00	0.9	SSE
12/13/2023 13:28:00	6.0	6.3	0.3	0.00	0.00	0.00	0.9	SW
12/13/2023 13:29:00	5.9	6.2	0.3	0.00	0.00	0.00	0.9	SSW
12/13/2023 13:30:00	5.9	6.0	0.1	0.00	0.00	0.00	0.9	E
12/13/2023 13:31:00	5.8	6.0	0.2	0.00	0.00	0.00	0.9	E

Date/Time	Average Upwind PM10 (µg/m³)	Average Downwind PM10 (µg/m³)	Average Contribution PM10 (µg/m³)	Average Upwind VOC (ppm)	Average Downwind VOC (ppm)	Average Contribution VOC (ppm)	Wind Speed 15 min Avg	Wind Direction
12/13/2023 13:32:00	5.6	5.9	0.2	0.00	0.00	0.00	0.9	E
12/13/2023 13:33:00	5.6	5.7	0.1	0.00	0.00	0.00	0.9	E
12/13/2023 13:34:00	5.7	5.6	-0.1	0.00	0.00	0.00	0.9	E
12/13/2023 13:35:00	5.6	5.5	-0.1	0.00	0.00	0.00	1.0	ESE
12/13/2023 13:36:00	5.4	5.3	0.0	0.00	0.00	0.00	1.0	ESE
12/13/2023 13:37:00	5.2	5.3	0.0	0.00	0.00	0.00	1.0	E
12/13/2023 13:38:00	5.2	5.1	-0.1	0.00	0.00	0.00	0.9	E
12/13/2023 13:39:00	5.2	5.1	-0.1	0.00	0.00	0.00	0.9	ESE
12/13/2023 13:40:00	5.2	5.0	-0.1	0.00	0.00	0.00	1.0	E
12/13/2023 13:41:00	5.3	5.2	-0.1	0.00	0.00	0.00	1.0	ESE
12/13/2023 13:42:00	5.4	5.2	-0.2	0.00	0.00	0.00	0.9	W
12/13/2023 13:43:00	5.4	5.3	-0.1	0.00	0.01	0.01	0.9	E
12/13/2023 13:44:00	5.6	5.2	-0.4	0.00	0.01	0.00	0.9	S
12/13/2023 13:45:00	5.6	5.4	-0.2	0.00	0.01	0.00	0.9	NE
12/13/2023 13:46:00	5.6	5.6	-0.1	0.00	0.01	0.01	0.9	ESE
12/13/2023 13:47:00	5.6	5.7	0.1	0.00	0.01	0.01	0.9	E
12/13/2023 13:48:00	5.7	5.7	0.0	0.00	0.01	0.01	0.9	S
12/13/2023 13:49:00	6.1	5.6	-0.5	0.00	0.01	0.00	0.9	SW
12/13/2023 13:50:00	7.0	5.7	-1.3	0.01	0.01	0.00	0.9	S
12/13/2023 13:51:00	7.0	6.0	-1.0	0.01	0.01	0.00	0.8	E
12/13/2023 13:52:00	6.9	6.5	-0.5	0.01	0.01	0.00	0.9	ENE
12/13/2023 13:53:00	7.4	6.4	-1.0	0.01	0.01	0.00	0.9	SW
12/13/2023 13:54:00	7.3	6.4	-0.9	0.01	0.01	0.00	0.9	ESE
12/13/2023 13:55:00	7.3	6.3	-1.0	0.01	0.01	0.00	0.9	WSW
12/13/2023 13:56:00	7.2	6.0	-1.2	0.01	0.01	0.00	0.9	SSW
12/13/2023 13:57:00	7.0	6.2	-0.9	0.01	0.01	0.00	0.9	E
12/13/2023 13:58:00	7.0	6.2	-0.8	0.01	0.01	0.00	0.9	NE
12/13/2023 13:59:00	6.8	6.2	-0.6	0.01	0.01	0.00	0.9	W
12/13/2023 14:00:00	6.8	6.0	-0.8	0.01	0.01	0.00	0.9	E
12/13/2023 14:01:00	6.9	6.0	-0.9	0.01	0.01	0.00	0.9	SSW
12/13/2023 14:02:00	7.0	6.0	-1.0	0.01	0.01	0.00	0.9	ENE
12/13/2023 14:03:00	7.0	6.0	-1.0	0.01	0.01	0.00	0.9	SSE

Date/Time	Average Upwind PM10 (µg/m³)	Average Downwind PM10 (µg/m³)	Average Contribution PM10 (µg/m³)	Average Upwind VOC (ppm)	Average Downwind VOC (ppm)	Average Contribution VOC (ppm)	Wind Speed 15 min Avg	Wind Direction
12/13/2023 14:04:00	6.4	6.2	-0.2	0.01	0.01	0.00	0.9	E
12/13/2023 14:05:00	5.6	6.2	0.6	0.01	0.01	0.00	0.9	E
12/13/2023 14:06:00	5.6	6.0	0.4	0.01	0.01	0.00	0.9	E
12/13/2023 14:07:00	5.5	5.3	-0.2	0.01	0.01	0.01	0.9	E
12/13/2023 14:08:00	5.0	5.1	0.2	0.01	0.01	0.01	0.9	ESE
12/13/2023 14:09:00	4.8	5.0	0.2	0.01	0.01	0.01	0.9	W
12/13/2023 14:10:00	4.6	4.9	0.3	0.01	0.01	0.01	0.8	ENE
12/13/2023 14:11:00	4.5	4.8	0.3	0.00	0.01	0.01	0.8	E
12/13/2023 14:12:00	4.5	4.6	0.1	0.00	0.01	0.01	0.8	SSW
12/13/2023 14:13:00	4.8	4.3	-0.4	0.00	0.01	0.01	0.8	E
12/13/2023 14:14:00	5.1	4.3	-0.8	0.00	0.01	0.01	0.8	ESE
12/13/2023 14:15:00	5.1	4.2	-1.0	0.00	0.01	0.01	0.7	NE
12/13/2023 14:16:00	5.0	3.9	-1.0	0.00	0.01	0.01	0.8	E
12/13/2023 14:17:00	5.0	3.9	-1.0	0.00	0.01	0.01	0.8	ESE
12/13/2023 14:18:00	5.0	3.9	-1.1	0.00	0.01	0.01	0.8	ESE
12/13/2023 14:19:00	5.0	4.0	-1.0	0.00	0.01	0.01	0.8	SSE
12/13/2023 14:20:00	5.1	4.3	-0.8	0.00	0.00	0.00	0.8	SW
12/13/2023 14:21:00	5.2	4.3	-0.8	0.00	0.00	0.00	0.7	SE
12/13/2023 14:22:00	5.2	4.5	-0.7	0.00	0.00	0.00	0.7	N
12/13/2023 14:23:00	5.3	4.5	-0.7	0.00	0.00	0.00	0.7	WNW
12/13/2023 14:24:00	5.4	4.7	-0.8	0.00	0.00	0.00	0.7	ENE
12/13/2023 14:25:00	5.5	4.8	-0.8	0.00	0.00	0.00	0.7	SE
12/13/2023 14:26:00	5.6	4.9	-0.7	0.00	0.00	0.00	0.7	SSE
12/13/2023 14:27:00	5.6	4.9	-0.7	0.00	0.00	0.00	0.7	ESE
12/13/2023 14:28:00	5.5	5.0	-0.5	0.00	0.00	0.00	0.7	WSW
12/13/2023 14:29:00	5.1	5.2	0.1	0.00	0.00	0.00	0.8	E
12/13/2023 14:30:00	5.0	5.5	0.4	0.00	0.00	0.00	0.8	E
12/13/2023 14:31:00	5.1	6.0	0.9	0.00	0.00	0.00	0.8	E
12/13/2023 14:32:00	5.0	6.6	1.6	0.00	0.00	0.00	0.8	E
12/13/2023 14:33:00	5.5	6.6	1.1	0.00	0.00	0.00	0.8	SSW
12/13/2023 14:34:00	6.0	6.4	0.3	0.01	0.00	0.00	0.8	SW
12/13/2023 14:35:00	6.0	6.8	0.9	0.01	0.01	0.00	0.8	ENE

Date/Time	Average Upwind PM10 (µg/m³)	Average Downwind PM10 (µg/m³)	Average Contribution PM10 (µg/m³)	Average Upwind VOC (ppm)	Average Downwind VOC (ppm)	Average Contribution VOC (ppm)	Wind Speed 15 min Avg	Wind Direction
12/13/2023 14:36:00	6.1	6.8	0.7	0.01	0.01	0.00	0.8	SSE
12/13/2023 14:37:00	6.1	6.8	0.7	0.01	0.01	0.00	0.8	E
12/13/2023 14:38:00	6.3	6.9	0.7	0.01	0.01	0.00	0.8	E
12/13/2023 14:39:00	6.6	7.9	1.3	0.01	0.01	0.00	0.8	E
12/13/2023 14:40:00	6.8	9.8	3.0	0.01	0.01	0.01	0.8	ESE
12/13/2023 14:41:00	7.0	9.8	2.8	0.01	0.01	0.01	0.8	E
12/13/2023 14:42:00	7.1	9.8	2.7	0.01	0.01	0.01	0.9	E
12/13/2023 14:43:00	7.0	9.9	2.9	0.01	0.01	0.01	0.9	ENE
12/13/2023 14:44:00	7.0	9.7	2.7	0.01	0.01	0.01	0.8	ESE
12/13/2023 14:45:00	6.9	9.3	2.5	0.01	0.01	0.01	0.8	E
12/13/2023 14:46:00	6.8	9.0	2.2	0.01	0.01	0.01	0.8	E
12/13/2023 14:47:00	6.9	8.3	1.4	0.01	0.01	0.01	0.8	S
12/13/2023 14:48:00	6.3	8.7	2.3	0.00	0.01	0.01	0.8	E
12/13/2023 14:49:00	6.1	8.8	2.7	0.00	0.01	0.01	0.8	NE
12/13/2023 14:50:00	6.3	8.0	1.7	0.00	0.01	0.01	0.8	WSW
12/13/2023 14:51:00	6.2	7.9	1.8	0.00	0.01	0.01	0.8	W
12/13/2023 14:52:00	6.3	8.0	1.7	0.00	0.01	0.01	0.8	ENE
12/13/2023 14:53:00	6.3	7.9	1.6	0.00	0.01	0.01	0.8	E
12/13/2023 14:54:00	5.9	7.0	1.1	0.00	0.01	0.01	0.8	WSW
12/13/2023 14:55:00	5.9	5.2	-0.7	0.00	0.01	0.00	0.9	E
12/13/2023 14:56:00	6.0	5.9	-0.1	0.00	0.00	0.00	0.8	WSW
12/13/2023 14:57:00	7.3	5.9	-1.4	0.00	0.00	0.00	0.8	ENE
12/13/2023 14:58:00	7.6	5.8	-1.8	0.00	0.01	0.00	0.8	NE
12/13/2023 14:59:00	8.1	6.0	-2.1	0.00	0.01	0.00	0.9	E
12/13/2023 15:00:00				0.00	0.01	0.00	0.9	ESE
12/13/2023 15:01:00				0.00	0.01	0.00	0.9	ESE
12/13/2023 15:02:00				0.00	0.01	0.00	0.9	SW
12/13/2023 15:03:00	4.4	4.4	-0.1	0.00	0.01	0.00	0.9	S
12/13/2023 15:04:00	4.0	4.4	0.4	0.00	0.01	0.00	0.9	WSW
12/13/2023 15:05:00	4.9	4.1	-0.8	0.00	0.01	0.00	0.9	E
12/13/2023 15:06:00	4.6	4.0	-0.5	0.00	0.01	0.00	1.0	ESE
12/13/2023 15:07:00	4.5	3.9	-0.6	0.00	0.01	0.00	1.0	SSW

Date/Time	Average Upwind PM10 (µg/m³)	Average Downwind PM10 (µg/m³)	Average Contribution PM10 (µg/m³)	Average Upwind VOC (ppm)	Average Downwind VOC (ppm)	Average Contribution VOC (ppm)	Wind Speed 15 min Avg	Wind Direction
12/13/2023 15:08:00	4.5	3.8	-0.7	0.00	0.01	0.00	1.0	W
12/13/2023 15:09:00	4.7	3.8	-0.9	0.00	0.01	0.00	1.0	SW
12/13/2023 15:10:00	4.6	3.9	-0.7	0.01	0.01	0.00	0.9	S
12/13/2023 15:11:00	4.8	3.7	-1.1	0.00	0.01	0.00	0.9	ESE
12/13/2023 15:12:00	4.9	3.6	-1.3	0.00	0.00	0.00	0.9	SE
12/13/2023 15:13:00	4.7	3.4	-1.3	0.00	0.00	0.00	0.9	E
12/13/2023 15:14:00	4.5	3.3	-1.2	0.00	0.00	0.00	0.9	ESE
12/13/2023 15:15:00	4.4	3.2	-1.2	0.00	0.00	0.00	0.9	ESE
12/13/2023 15:16:00	4.2	3.2	-1.0	0.00	0.00	0.00	0.9	SSE
12/13/2023 15:17:00	4.1	3.1	-1.0	0.00	0.00	0.00	0.9	E
12/13/2023 15:18:00	4.0	2.9	-1.1	0.00	0.00	0.00	0.9	ESE
12/13/2023 15:19:00	4.1	2.8	-1.4	0.00	0.00	0.00	0.9	E
12/13/2023 15:20:00	3.9	2.8	-1.2	0.00	0.00	0.00	0.8	ESE
12/13/2023 15:21:00	3.9	2.8	-1.0	0.00	0.00	0.00	0.8	WNW
12/13/2023 15:22:00	3.8	2.7	-1.1	0.00	0.00	0.00	0.8	E
12/13/2023 15:23:00	3.8	2.5	-1.2	0.00	0.00	0.00	0.8	ESE
12/13/2023 15:24:00	3.7	2.5	-1.2	0.00	0.00	0.00	0.8	ESE
12/13/2023 15:25:00	4.0	2.4	-1.6	0.00	0.00	0.00	0.8	ESE
12/13/2023 15:26:00	4.0	2.6	-1.4	0.00	0.00	0.00	0.8	E
12/13/2023 15:27:00	3.8	2.9	-1.0	0.00	0.00	0.00	0.9	SW
12/13/2023 15:28:00	3.8	2.9	-0.9	0.00	0.00	0.00	0.9	E
12/13/2023 15:29:00	4.0	2.9	-1.1	0.00	0.00	0.00	0.9	E
12/13/2023 15:30:00	4.1	2.9	-1.2	0.00	0.00	0.00	0.9	ESE
12/13/2023 15:31:00	4.3	3.1	-1.1	0.00	0.00	0.00	0.9	SW
12/13/2023 15:32:00	6.3	3.2	-3.0	0.00	0.00	0.00	0.9	ESE
12/13/2023 15:33:00	6.7	3.3	-3.4	0.00	0.00	0.00	0.9	E
12/13/2023 15:34:00	6.7	3.3	-3.4	0.00	0.00	0.00	0.9	E
12/13/2023 15:35:00	6.6	3.2	-3.4	0.00	0.00	0.00	0.9	E
12/13/2023 15:36:00	6.7	3.1	-3.6	0.00	0.00	0.00	0.9	SE
12/13/2023 15:37:00	6.5	3.2	-3.3	0.00	0.00	0.00	0.9	WSW
12/13/2023 15:38:00	6.5	3.3	-3.2	0.00	0.00	0.00	1.0	SW
12/13/2023 15:39:00	6.4	3.4	-3.0	0.00	0.00	0.00	0.9	SSE

Date/Time	Average Upwind PM10 (µg/m³)	Average Downwind PM10 (µg/m³)	Average Contribution PM10 (µg/m³)	Average Upwind VOC (ppm)	Average Downwind VOC (ppm)	Average Contribution VOC (ppm)	Wind Speed 15 min Avg	Wind Direction
12/13/2023 15:40:00	6.4	3.4	-3.0	0.00	0.00	0.00	1.0	E
12/13/2023 15:41:00	6.5	3.3	-3.3	0.00	0.00	0.00	1.0	E
12/13/2023 15:42:00	6.6	3.6	-2.9	0.00	0.00	0.00	0.9	S
12/13/2023 15:43:00	7.0	3.8	-3.2	0.00	0.00	0.00	0.9	ESE
12/13/2023 15:44:00	6.9	4.4	-2.5	0.00	0.00	0.00	0.9	W
12/13/2023 15:45:00	7.2	4.5	-2.7	0.00	0.00	0.00	0.9	E
12/13/2023 15:46:00	7.5	4.3	-3.2	0.00	0.00	0.00	0.9	ESE
12/13/2023 15:47:00	5.7	4.2	-1.5	0.00	0.00	0.00	0.9	ESE
12/13/2023 15:48:00	5.5	4.3	-1.3	0.00	0.00	0.00	0.9	ESE
12/13/2023 15:49:00	5.3	4.5	-0.8	0.00	0.00	0.00	0.9	W
12/13/2023 15:50:00	5.3	4.7	-0.6	0.00	0.00	0.00	0.9	W
12/13/2023 15:51:00	5.5	4.6	-0.8	0.00	0.00	0.00	0.9	ENE
12/13/2023 15:52:00	5.5	4.8	-0.6	0.00	0.00	0.00	0.9	SW
12/13/2023 15:53:00	5.4	5.1	-0.3	0.00	0.00	0.00	0.9	W
12/13/2023 15:54:00	5.2	5.2	0.0	0.00	0.00	0.00	0.9	WNW
12/13/2023 15:55:00	5.0	5.4	0.4	0.00	0.00	0.00	0.9	SSE
12/13/2023 15:56:00	4.8	5.4	0.7	0.00	0.00	0.00	0.9	ESE
12/13/2023 15:57:00	4.9	5.1	0.2	0.00	0.00	0.00	0.8	SW
12/13/2023 15:58:00	4.4	5.1	0.7	0.00	0.00	0.00	0.8	W
12/13/2023 15:59:00	4.5	4.6	0.0	0.00	0.00	0.00	0.8	E
12/13/2023 16:00:00	4.1	4.7	0.6	0.00	0.00	0.00	0.8	SW
12/13/2023 16:01:00	4.0	4.7	0.7	0.00	0.00	0.00	0.8	ENE
12/13/2023 16:02:00	3.6	4.8	1.2	0.00	0.00	0.00	0.8	SW
12/13/2023 16:03:00	3.5	4.7	1.2	0.00	0.00	0.00	0.7	E
12/13/2023 16:04:00	3.7	4.4	0.7	0.00	0.00	0.00	0.7	ESE
12/13/2023 16:05:00	4.1	4.1	0.1	0.00	0.00	0.00	0.7	E
12/13/2023 16:06:00	4.1	4.2	0.1	0.00	0.00	0.00	0.7	NE
12/13/2023 16:07:00	4.3	3.8	-0.5	0.00	0.00	0.00	0.7	E
12/13/2023 16:08:00	4.6	3.5	-1.1	0.00	0.00	0.00	0.7	SE
12/13/2023 16:09:00	4.9	3.3	-1.7	0.00	0.00	0.00	0.7	E
12/13/2023 16:10:00	5.2	3.0	-2.2	0.00	0.00	0.00	0.8	ESE
12/13/2023 16:11:00	4.9	3.1	-1.8	0.00	0.00	0.00	0.8	WNW

Date/Time	Average Upwind PM10 (µg/m³)	Average Downwind PM10 (µg/m³)	Average Contribution PM10 (µg/m³)	Average Upwind VOC (ppm)	Average Downwind VOC (ppm)	Average Contribution VOC (ppm)	Wind Speed 15 min Avg	Wind Direction
12/13/2023 16:12:00	4.8	3.0	-1.8	0.00	0.00	0.00	0.8	WSW
12/13/2023 16:13:00	5.0	2.9	-2.0	0.00	0.00	0.00	0.8	NE
12/13/2023 16:14:00	4.9	3.1	-1.9	0.00	0.00	0.00	0.8	W
12/13/2023 16:15:00	5.0	3.0	-1.9	0.00	0.00	0.00	0.8	W
12/13/2023 16:16:00	4.9	3.1	-1.8	0.00	0.00	0.00	0.8	E
12/13/2023 16:17:00	5.2	3.1	-2.1	0.00	0.00	0.00	0.8	E
12/13/2023 16:18:00	5.1	3.5	-1.7	0.00	0.00	0.00	0.8	SW
12/13/2023 16:19:00	5.1	3.6	-1.5	0.00	0.00	0.00	0.8	E
12/13/2023 16:20:00	5.0	3.9	-1.1	0.00	0.00	0.00	0.8	SW
12/13/2023 16:21:00	4.8	4.1	-0.7	0.00	0.00	0.00	0.9	W
12/13/2023 16:22:00	4.7	4.2	-0.5	0.00	0.00	0.00	0.8	SE
12/13/2023 16:23:00	4.6	4.3	-0.3	0.00	0.00	0.00	0.8	E
12/13/2023 16:24:00	4.4	4.6	0.2	0.00	0.00	0.00	0.8	S
12/13/2023 16:25:00	4.3	4.6	0.3	0.00	0.00	0.00	0.8	E
12/13/2023 16:26:00	4.8	4.2	-0.5	0.00	0.00	0.00	0.8	E
12/13/2023 16:27:00	5.0	4.0	-1.0	0.00	0.00	0.00	0.8	ENE
12/13/2023 16:28:00	5.1	3.9	-1.2	0.00	0.00	0.00	0.8	ESE
12/13/2023 16:29:00	5.2	3.8	-1.4	0.00	0.00	0.00	0.7	ENE
12/13/2023 16:30:00	5.2	3.6	-1.6	0.00	0.00	0.00	0.7	E
12/13/2023 16:31:00	5.3	3.6	-1.7	0.00	0.00	0.00	0.7	E
12/13/2023 16:32:00	5.4	3.5	-1.9	0.00	0.00	0.00	0.7	E
12/13/2023 16:33:00	5.5	3.1	-2.4	0.00	0.00	0.00	0.7	E
12/13/2023 16:34:00	5.6	3.0	-2.6	0.00	0.00	0.00	0.7	ESE
12/13/2023 16:35:00	5.7	2.7	-3.0	0.00	0.00	0.00	0.7	ENE
12/13/2023 16:36:00	5.8	2.6	-3.2	0.00	0.00	0.00	0.8	E
12/13/2023 16:37:00	5.8	2.8	-3.0	0.00	0.00	0.00	0.8	E
12/13/2023 16:38:00	5.8	3.0	-2.8	0.00	0.00	0.00	0.8	SW
12/13/2023 16:39:00	5.9	2.6	-3.2	0.00	0.00	0.00	0.9	E
12/13/2023 16:40:00	5.7	2.7	-3.1	0.00	0.00	0.00	0.9	ESE
12/13/2023 16:41:00	5.3	2.9	-2.5	0.00	0.00	0.00	0.9	WSW
12/13/2023 16:42:00	5.2	3.0	-2.2	0.00	0.00	0.00	0.9	E
12/13/2023 16:43:00	5.1	2.9	-2.1	0.00	0.00	0.00	1.0	NNE

Date/Time	Average Upwind PM10 (µg/m³)	Average Downwind PM10 (µg/m³)	Average Contribution PM10 (µg/m³)	Average Upwind VOC (ppm)	Average Downwind VOC (ppm)	Average Contribution VOC (ppm)	Wind Speed 15 min Avg	Wind Direction
12/13/2023 16:44:00	4.8	3.0	-1.9	0.00	0.00	0.00	1.0	SW
12/13/2023 16:45:00	4.8	2.9	-1.9	0.00	0.00	0.00	1.0	N
12/13/2023 16:46:00	4.6	3.0	-1.6	0.00	0.00	0.00	1.0	WSW
12/13/2023 16:47:00	4.1	3.2	-1.0	0.00	0.00	0.00	1.0	SSW
12/13/2023 16:48:00	3.9	3.4	-0.4	0.00	0.00	0.00	1.1	WSW
12/13/2023 16:49:00	4.0	3.4	-0.6	0.00	0.00	0.00	1.1	E
12/13/2023 16:50:00	4.1	3.4	-0.7	0.00	0.00	0.00	1.1	E
12/13/2023 16:51:00	4.4	3.3	-1.1	0.00	0.00	0.00	1.0	SE
12/13/2023 16:52:00	4.7	3.0	-1.7	0.00	0.00	0.00	1.0	ESE
12/13/2023 16:53:00	4.7	2.8	-1.9	0.00	0.00	0.00	1.0	NE
12/13/2023 16:54:00	4.5	2.9	-1.6	0.00	0.00	0.00	1.0	WSW