

**Update Report
December 2003 through February 2004
Hess Station 32517 – Inwood**

NYSDEC #: 97-06124
STATION #: 32517

**401 West 207th Street
New York, New York**

SUMMARY

The quarterly groundwater sampling of nine (9) monitoring wells (MWs) and five (5) soil-vapor extraction (SVE) cluster wells at the above-referenced Hess facility in New York, New York was conducted on February 9, 2004. MW-5 and MW-7 were not accessible due to snow and ice and therefore could not be sampled. Prior to sampling, each well was gauged and checked for the presence of liquid-phase hydrocarbons (LPH). LPH was encountered in MW-2 at a thickness of 0.18 feet. Hand-bailing events are being conducted monthly. A groundwater sample was not collected from MW-2 due to the presence of LPH. SVE-1 and SVE-3 were dry and therefore were not sampled. MW-5 was accessible and a groundwater sample was collected during a site visit on February 13, 2004, but MW-7 was still not accessible. Well gauging data is attached.

The groundwater samples were submitted to Toxikon Corporation of Bedford, Massachusetts and analyzed for benzene, toluene, ethylbenzene, xylenes (BTEX) and methyl tertiary-butyl ether (MTBE) via EPA Method 602. A summary of groundwater analytical results is attached. Refer to Figure 1 for total dissolved BTEX and MTBE groundwater concentrations. Groundwater will continue to be sampled quarterly.

The soil-vapor extraction/air sparge (SVE/AS) system has not been operational due to the failure of the SVE blower discovered on November 18, 2003. The blower was reconditioned by the manufacturer and was reinstalled on February 13, 2004 and the SVE/AS system was restarted. A Summary of SVE/AS System Data and a Summary of SVE/AS System Operation are attached

AS/SVE SYSTEM OPERATING CONDITIONS

SVE System

Sampling Frequency: Monthly GC and PID analysis of air effluent
Sampling Date: February 13, 2004
System Flow: 231 cfm
System Vacuum: 41" H₂O
SVE Wells On-line: MW-2, 4, 6 and SVE-1, 4, 5

AS System

System Flow: Not Measured – System between pulses
System Pressure: Not Measured – System between pulses
AS Wells On-line: AS-2, 3, 4 and AS/SVE-4

HYDROGEOLOGY

Depth to Water: 9.34 – 11.85 feet below casing
Flow Direction: East

GROUNDWATER SAMPLING

Sample Frequency: Quarterly

Monitoring Wells:

BTEX (Max.): 51,500 ppb (SVE-4 – 02/09/04)
MTBE (Max.): 84,000 ppb (SVE-4 – 02/09/04)

PRODUCT RECOVERY

Thickness (Max): 0.18 ft. (MW-2 – 02/09/04)
Recovered: 0.75 gal. (report period)
225.15 gal. (total)

ATTACHMENTS

Figure 1 – Water Table Elevation (02/09/04) and Total Dissolved BTEX/MTBE Concentration Map

Figure 2 – Surrounding Properties Map

Site Photo-documentation

Well Gauging Data

Summary of Vac Truck Events

Summary of Groundwater Sampling Data

Summary of SVE/AS System Data

Summary of SVE/AS System Operation

Laboratory Reports – Groundwater

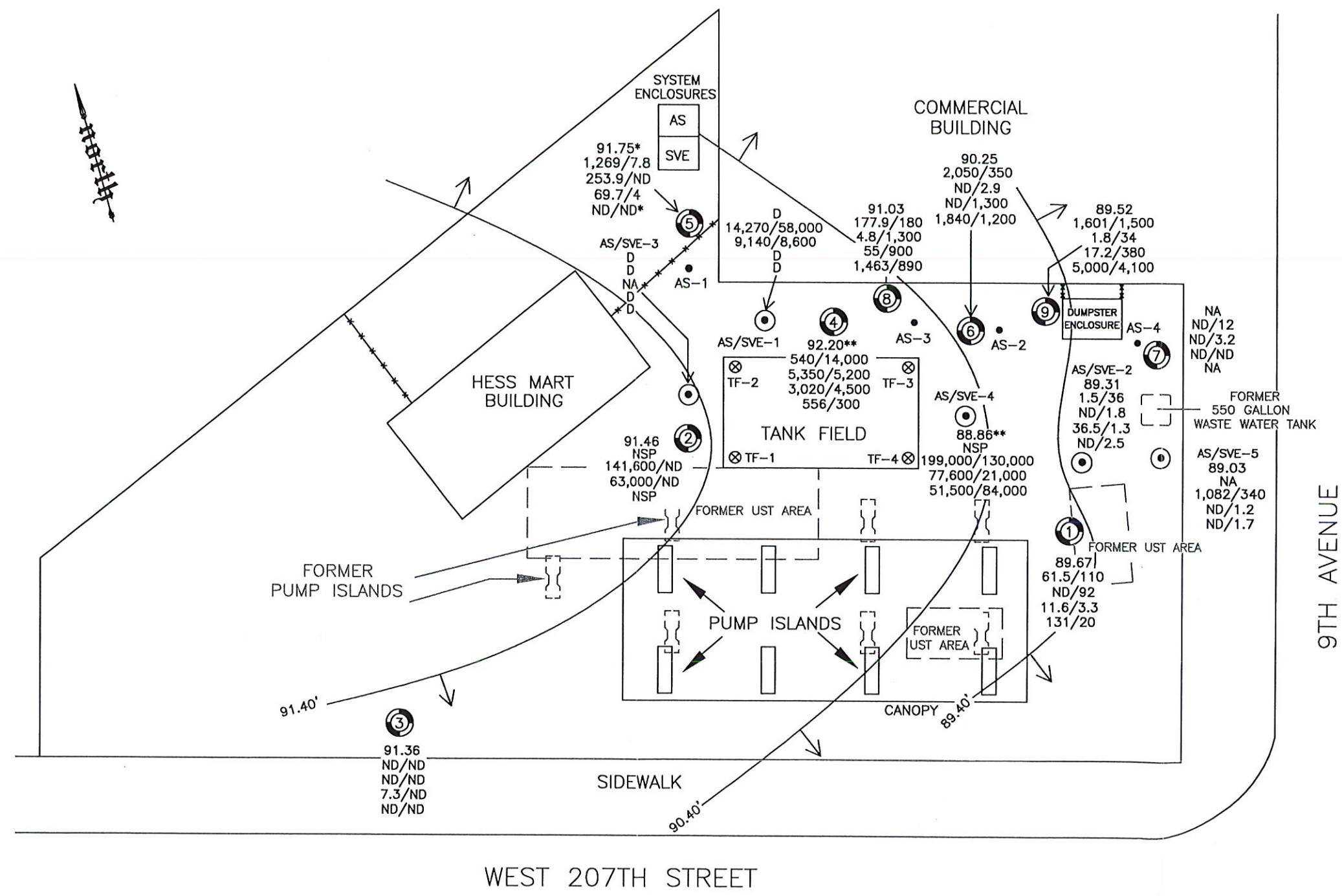
LEGEND:

- MONITORING WELL
- ⊙ AS/SVE CLUSTER WELL
- AIR SPARGE WELL
- ⊗ TANK FIELD WELL
- = FORMER SITE FEATURE

AS = AIR SPARGE
 SVE = SOIL VAPOR EXTRACTION
 NSP = NOT SAMPLED DUE TO PRODUCT
 NM = NOT MEASURED
 ND = NOT DETECTED
 D = DRY
 CONTOUR INTERVAL = 1.00'
 ** = NOT USED IN CONTOUR CONSTRUCTION
 * = GAUGED & SAMPLED ON FEBRUARY 13, 2004 (NOT USED IN CONTOUR CONSTRUCTION)

SAMPLE WELL:

- ③ = WELL ID
- 91.36 = WATER-TABLE ELEVATION
- ND/ND = MAY 28, 2003
- N^o = AUGUST 20, 2003
- 7 = NOVEMBER 20, 2003
- ND/ND = FEBRUARY 9, 2004
- BTEX/MTBE RESULTS IN PPB





RETAIL STORES AND APARTMENTS

10TH AVENUE

NEW YORK CITY TRANSIT AUTHORITY (TRAIN YARD)

NEW YORK CITY TRANSIT AUTHORITY (GARAGE)

NEW YORK CITY TRANSIT AUTHORITY (OFFICE BUILDING)

HESS STATION

9TH AVENUE

MANHATTAN RECYCLING CENTER, INC. (SCRAP METAL AND STORAGE AREA)

HARLEM RIVER

WEST 207TH STREET

RETAIL STORES AND APARTMENTS

KWICK CLEAN

FLOWER SHOP

SAHARA FURNITURE

PATHMARK

PARKING LOT

RETAIL STORES

MANHATTAN RECYCLING CENTER, INC.



SCALE: NOT TO SCALE

REVISION DATE: APRIL 22, 2002

REVISED BY: TB

HESS STATION - INWOOD
401 W. 207TH STREET & 9TH AVENUE
NEW YORK, NEW YORK

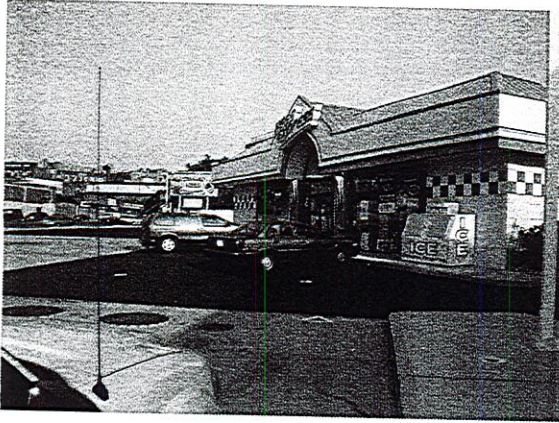
SURROUNDING PROPERTIES MAP

FIGURE #

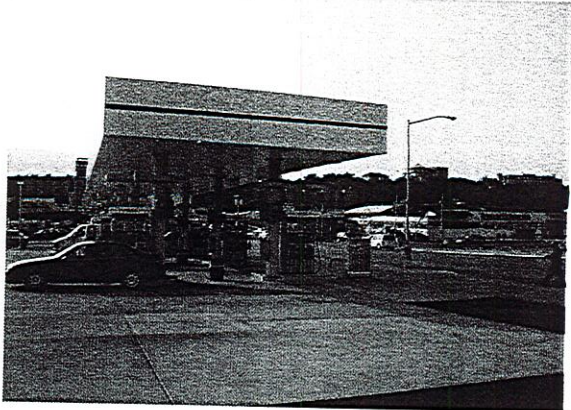
2

80 B AIR PARK DRIVE
ROSELAND, NEW YORK 11778
PHONE: (631)471-1800 FAX: (631)471-6363

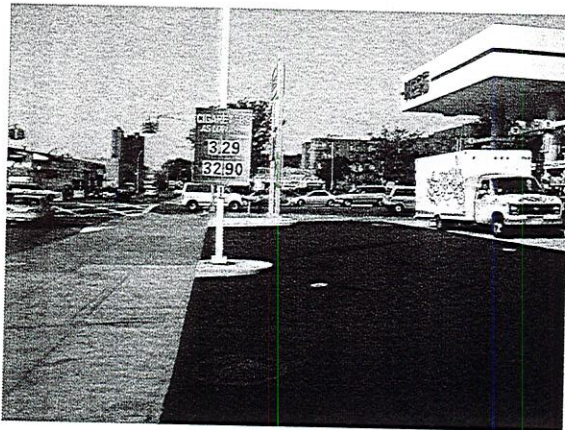
Site Photo-documentation
Hess Station 32517 - Inwood
401 West 207th Street
New York, NY



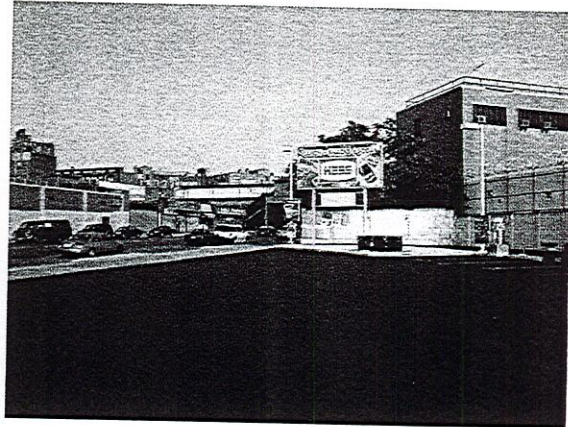
Looking west at Hess Mart



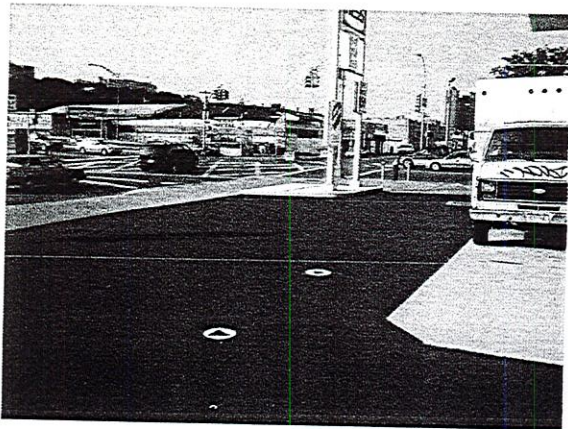
Looking east at Dispenser Islands



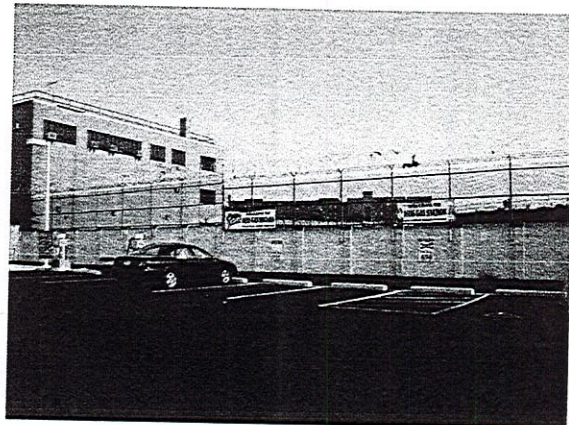
Looking south from Station



Looking west from Station



Looking southeast from Station



Northwestern side of Station

Well Gauging Data

Hess Station 32517- Inwood

401 West 207th Street

New York, NY

Well	Date	Gauge Point Elevation (ft.)	Depth to Water (ft.)	Depth to Product (ft.)	Product Thickness (ft.)	Water Level Elevation (ft.)	Recovered Product (gal.)
MW-1	05/20/99	93.29	10.06			83.23	
	01/22/01	93.29	11.60			81.69	
	05/31/01	93.29	11.22			82.07	
	08/09/01	93.29	11.32			81.97	
	11/27/01	93.29	11.29			82.00	
	02/06/02	93.29	11.17			82.12	
	05/22/02	NM	8.80			NM	
	06/25/02	NM	9.07			NM	
	07/10/02	NM	9.40			NM	
	07/12/02	NM	9.75			NM	
	07/24/02	NM	9.31			NM	
	08/14/02	NM	10.28			NM	
	11/18/02	NM	8.12			NM	
	02/11/03	100.00	11.56			88.44	
	05/28/03	100.00	10.08			89.92	
	08/20/03	100.00	9.52			90.48	
	11/20/03	100.00	9.99			90.01	
02/09/04	100.00	10.33			89.67		
MW-2	05/20/99	95.27	10.02			85.25	
	01/22/01	95.27	11.33			83.94	
	05/31/01	95.27	11.03			84.24	
	08/09/01	95.27	11.34			83.93	
	11/27/01	95.27	11.61			83.66	
	02/06/02	95.27	11.76			83.51	
	05/22/02	NM	8.54			NM	
	07/12/02	NM	9.71			NM	
	08/14/02	NM	10.72			NM	
	11/18/02	NM	9.84			NM	
	02/11/03	101.65	10.75			90.90	
	05/28/03	101.65	9.89	9.87	0.02	91.78	
	06/06/03	101.65	9.61	9.44	0.17	92.17	0.10
	06/09/03	101.65	9.28	9.20	0.08	92.43	1.00
06/26/03	101.65	9.15	9.05	0.10	92.58	0.10	
07/10/03	101.65	9.28	9.15	0.13	92.47	1.00	

NM = Not Measured

NA = Not Accessible

D = Dry

Water Level Elevations for product wells are calculated using a 0.75 correction factor.

Well Gauging Data Hess Station 32517- Inwood

401 West 207th Street
New York, NY

Well	Date	Gauge Point Elevation (ft.)	Depth to Water (ft.)	Depth to Product (ft.)	Product Thickness (ft.)	Water Level Elevation (ft.)	Recovered Product (gal.)
	07/17/03	101.65	9.90	9.78	0.12	91.84	0.10
	08/18/03	101.65	9.15	9.12	0.03	92.52	0.10
	08/20/03	101.65	9.61	9.60	0.01	92.05	0.10
	09/19/03	101.65	9.60	9.55	0.05	92.09	1.00
	09/25/03	101.65	9.26	9.22	0.04	92.42	0.05
	10/15/03	101.65	9.48			92.17	
	11/18/03	101.65	10.30	10.15	0.15	91.46	2.00
	11/20/03	101.65	10.17	10.01	0.16	91.60	0.50
	12/17/03	101.65	10.01	9.89	0.12	91.73	0.25
	01/29/04	101.65	9.92			91.73	
	02/09/04	101.65	10.33	10.15	0.18	91.46	0.50
	02/13/04	101.65	10.28	10.24	0.04	91.40	
MW-3	05/20/99	96.72	10.99			85.73	
	01/22/01	96.72	10.48			86.24	
	05/31/01	96.72	12.07			84.65	
	08/09/01	96.72	12.39			84.33	
	11/27/01	96.72	12.60			84.12	
	02/06/02	96.72	12.88			83.84	
	05/22/02	96.72	10.60			86.12	
	07/12/02	96.72	11.46			85.26	
	08/14/02	96.72	12.07			84.65	
	11/18/02	96.72	11.35			85.37	
	02/11/03	103.21	12.11			91.10	
	05/28/03	103.21	11.44			91.77	
	08/20/03	103.21	11.25			91.96	
	11/20/03	103.21	11.61			91.60	
	02/09/04	103.21	11.85			91.36	
MW-4	05/20/99	94.86	10.06			84.80	
	01/22/01	94.86	11.20			83.66	
	05/31/01	94.86	11.00			83.86	
	08/09/01	94.86	11.38			83.48	
	11/27/01	94.86	11.68			83.18	
	02/06/02	94.86	11.64			83.22	
	05/22/02	NM	9.97			NM	

NM = Not Measured

NA = Not Accessible

D = Dry

Water Level Elevations for product wells are calculated using a 0.75 correction factor.

Well Gauging Data

Hess Station 32517- Inwood

401 West 207th Street

New York, NY

Well	Date	Gauge Point Elevation (ft.)	Depth to Water (ft.)	Depth to Product (ft.)	Product Thickness (ft.)	Water Level Elevation (ft.)	Recovered Product (gal.)
	07/12/02	NM	10.34			NM	
	08/14/02	NM	10.65			NM	
	11/18/02	NM	10.95			NM	
	02/11/03	101.54	11.02			90.52	
	05/28/03	101.54	10.37			91.17	
	08/20/03	101.54	10.19			91.35	
	11/20/03	101.54	10.47			91.07	
	02/09/04	101.54	9.34			92.20	
MW-5	05/20/99	95.87	11.11			84.76	
	01/22/01	95.87	12.16			83.71	
	05/31/01	95.87	12.10			83.77	
	08/09/01	95.87	12.48			83.39	
	11/27/01	95.87	12.42			83.45	
	02/06/02	95.87	12.64			83.23	
	05/22/02	NM	10.86			NM	
	07/12/02	NM	11.75			NM	
	08/14/02	NM	12.29			NM	
	11/18/02	NM	11.37			NM	
	02/11/03	102.73	12.44			90.29	
	05/28/03	102.73	11.71			91.02	
	08/20/03	102.73	11.64			91.09	
	11/20/03	102.73	11.78			90.95	
	02/09/04	102.73	NA			NA	
	02/13/04	102.73	10.98			91.75	
MW-6	05/20/99	94.03	10.36			83.67	
	01/22/01	94.03	11.78			82.25	
	05/31/01	94.03	11.47			82.56	
	08/09/01	94.03	11.71			82.32	
	11/27/01	94.03	11.77			82.26	
	02/06/02	94.03	NA			NA	
	05/22/02	NM	10.28			NM	
	06/25/02	NM	11.39			NM	
	07/10/02	NM	10.75			NM	
	07/12/02	NM	10.84			NM	

NM = Not Measured

NA = Not Accessible

D = Dry

Water Level Elevations for product wells are calculated using a 0.75 correction factor.

Well Gauging Data

Hess Station 32517- Inwood

401 West 207th Street
New York, NY

Well	Date	Gauge Point Elevation (ft.)	Depth to Water (ft.)	Depth to Product (ft.)	Product Thickness (ft.)	Water Level Elevation (ft.)	Recovered Product (gal.)
	07/24/02	NM	10.99			NM	
	08/14/02	NM	11.13			NM	
	11/18/02	NM	8.78			NM	
	02/11/03	100.67	11.50			89.17	
	05/28/03	100.67	10.63			90.04	
	08/20/03	100.67	10.19			90.48	
	11/20/03	100.67	10.65			90.02	
	02/09/04	100.67	10.42			90.25	
MW-7	05/20/99	92.69	10.04			82.65	
	01/22/01	92.69	11.41			81.28	
	05/31/01	92.69	11.02			81.67	
	08/09/01	92.69	11.33			81.36	
	11/27/01	92.69	11.20			81.49	
	02/06/02	92.69	NA			NA	
	05/22/02	NM	10.72			NM	
	06/25/02	NM	11.03			NM	
	07/10/02	NM	11.06			NM	
	07/12/02	NM	11.20			NM	
	07/24/02	NM	11.23			NM	
	08/14/02	NM	11.35			NM	
	11/18/02	NM	9.60			NM	
	02/11/03	99.75	11.99			87.76	
	05/28/03	99.75	10.57			89.18	
	08/20/03	99.75	10.30			89.45	
	11/20/03	99.75	10.36			89.39	
	02/09/04	99.75	NA			NA	
	02/13/04	99.75	NA			NA	
MW-8	02/06/02	NM	11.57			NM	
	05/22/02	NM	10.23			NM	
	06/25/02	NM	10.64			NM	
	07/12/02	NM	10.77			NM	
	08/14/02	NM	11.09			NM	
	11/18/02	NM	9.66			NM	
	02/11/03	101.20	11.52			89.68	

NM = Not Measured

NA = Not Accessible

D = Dry

Water Level Elevations for product wells are calculated using a 0.75 correction factor.

Well Gauging Data

Hess Station 32517- Inwood

401 West 207th Street

New York, NY

Well	Date	Gauge Point Elevation (ft.)	Depth to Water (ft.)	Depth to Product (ft.)	Product Thickness (ft.)	Water Level Elevation (ft.)	Recovered Product (gal.)
MW-9	05/28/03	101.20	10.63			90.57	
	08/20/03	101.20	10.30			90.90	
	11/20/03	101.20	10.36			90.84	
	02/09/04	101.20	10.17			91.03	
	02/06/02	NM	11.97			NM	
	05/22/02	NM	10.92			NM	
	06/25/02	NM	11.24			NM	
	07/10/02	NM	11.41			NM	
	07/12/02	NM	11.48			NM	
	07/24/02	NM	11.60			NM	
	08/14/02	NM	11.77			NM	
	11/18/02	NM	9.51			NM	
	02/11/03	101.00	12.25			88.75	
	05/28/03	101.00	11.17			89.83	
SVE-1	08/20/03	101.00	10.69			90.31	
	11/20/03	101.00	11.06			89.94	
	02/09/04	101.00	11.48			89.52	
	05/20/99	NM	NM			NM	
	01/22/01	NM	11.32			NM	
	05/31/01	NM	11.30			NM	
	08/09/01	NM	11.71			NM	
	11/27/01	NM	11.61			NM	
	02/06/02	NM	11.84			NM	
	05/22/02	NM	9.85			NM	
	07/12/02	NM	10.50			NM	
	08/14/02	NM	10.98			NM	
	11/18/02	NM	10.10			NM	
	12/02/02	NM	10.30			NM	
SVE-2	02/11/03	101.35	11.74			89.61	
	05/28/03	101.35	10.23			91.12	
	08/20/03	101.35	10.16			91.19	
	11/20/03	101.35	D			D	
	02/09/04	101.35	D			D	
	05/20/99	NM	NM			NM	

NM = Not Measured

NA = Not Accessible

D = Dry

Water Level Elevations for product wells are calculated using a 0.75 correction factor.

Well Gauging Data

Hess Station 32517- Inwood

401 West 207th Street

New York, NY

Well	Date	Gauge Point Elevation (ft.)	Depth to Water (ft.)	Depth to Product (ft.)	Product Thickness (ft.)	Water Level Elevation (ft.)	Recovered Product (gal.)
	01/22/01	NM	11.90			NM	
	05/31/01	NM	11.40			NM	
	08/09/01	NM	11.34			NM	
	11/27/01	NM	11.58			NM	
	02/06/02	NM	11.39			NM	
	05/22/02	NM	9.32			NM	
	06/25/02	NM	10.46			NM	
	07/10/02	NM	10.15			NM	
	07/12/02	NM	10.10			NM	
	07/24/02	NM	10.29			NM	
	08/14/02	NM	10.73			NM	
	11/18/02	NM	9.15			NM	
	02/11/03	99.82	10.20			89.62	
	05/28/03	99.82	8.96			90.86	
	08/20/03	99.82	8.98			90.84	
	11/20/03	99.82	9.93			89.89	
	02/09/04	99.82	10.51			89.31	
SVE-3	05/20/99	NM	NM			NM	
	01/22/01	NM	11.40			NM	
	05/31/01	NM	11.45			NM	
	08/09/01	NM	11.88			NM	
	11/27/01	NM	11.78			NM	
	02/06/02	NM	D			D	
	05/22/02	NM	9.45			NM	
	07/12/02	NM	10.45			NM	
	08/14/02	NM	D			D	
	11/18/02	NM	D			D	
	02/11/03	102.31	D			D	
	05/28/03	102.31	NA			NA	
	06/06/03	102.31	9.53			92.78	
	06/11/03	102.31	D			D	
	08/20/03	102.31	D			D	
	11/20/03	102.31	D			D	
	02/09/04	102.31	D			D	

NM = Not Measured

NA = Not Accessible

D = Dry

Water Level Elevations for product wells are calculated using a 0.75 correction factor.

Well Gauging Data

Hess Station 32517- Inwood

401 West 207th Street

New York, NY

Well	Date	Gauge Point Elevation (ft.)	Depth to Water (ft.)	Depth to Product (ft.)	Product Thickness (ft.)	Water Level Elevation (ft.)	Recovered Product (gal.)
SVE-4	02/06/02	NM	13.04	11.95	1.09	NM	
	05/22/02	NM	12.23	9.55	2.68	NM	8.00
	05/24/02	NM	10.60	9.89	0.71	NM	5.00
	06/13/02	NM	12.18	9.42	2.76	NM	6.00
	06/25/02	NM	12.61	10.42	2.19	NM	11.00
	07/10/02	NM	12.48	10.42	2.06	NM	2.00
	07/12/02	NM	11.59	10.54	1.05	NM	8.00
	07/24/02	NM	12.75	10.80	1.95	NM	5.00
	08/14/02	NM	12.60	11.07	1.53	NM	7.00
	08/28/02	NM	12.43	10.89	1.54	NM	6.00
	09/19/02	NM	12.39	10.05	2.34	NM	6.00
	09/23/02	NM	11.42	10.22	1.20	NM	6.50
	09/26/02	NM	11.92	10.69	1.23	NM	3.00
	09/30/02	NM	11.58	9.74	1.84	NM	9.50
	10/04/02	NM	11.69	9.98	1.71	NM	3.25
	10/09/02	NM	11.77	10.35	1.42	NM	6.00
	10/14/02	NM	11.48	8.78	2.70	NM	6.00
	10/23/02	NM	12.02	8.91	3.11	NM	9.00
	10/31/02	NM	12.02	9.51	2.51	NM	5.00
	11/05/02	NM	12.01	10.11	1.90	NM	6.00
	11/15/02	NM	11.37	10.54	0.83	NM	6.00
	11/18/02	NM	10.45	9.85	0.60	NM	4.50
	12/02/02	NM	11.80	10.25	1.55	NM	7.00
	12/05/02	NM	11.32	10.68	0.64	NM	5.00
	12/09/02	NM	11.70	11.16	0.54	NM	4.00
	12/12/02	NM	11.48	11.04	0.44	NM	4.50
	12/27/02	NM	11.79	10.88	0.91	NM	2.50
	01/06/03	NM	11.04	9.45	1.59	NM	7.50
	01/10/03	NM	10.99	9.99	1.00	NM	5.00
	01/14/03	NM	11.11	10.50	0.61	NM	2.50
	01/17/03	NM	11.02	10.45	0.57	NM	4.00
	01/23/03	NM	11.95	11.06	0.89	NM	4.00
	01/24/03	NM	11.78	11.11	0.67	NM	1.50
	01/31/03	NM	12.08	11.74	0.34	NM	3.50

NM = Not Measured

NA = Not Accessible

D = Dry

Water Level Elevations for product wells are calculated using a 0.75 correction factor.

Well Gauging Data

Hess Station 32517- Inwood

401 West 207th Street
New York, NY

Well	Date	Gauge Point Elevation (ft.)	Depth to Water (ft.)	Depth to Product (ft.)	Product Thickness (ft.)	Water Level Elevation (ft.)	Recovered Product (gal.)
	02/07/03	NM	12.20	11.96	0.24	NM	3.50
	02/11/03	100.54	12.41	12.21	0.20	88.28	1.00
	02/21/03	100.54	13.37	12.48	0.89	87.84	3.00
	02/26/03	100.54	12.34	11.78	0.56	88.62	1.50
	03/07/03	100.54	11.98	11.20	0.78	89.15	1.50
	03/21/03	100.54	11.94	11.22	0.72	89.14	2.00
	03/27/03	100.54	11.05	10.99	0.06	89.54	1.00
	04/11/03	100.54	11.59	10.80	0.79	89.54	5.00
	04/24/03	100.54	11.45	10.79	0.66	89.59	1.00
	04/25/03	100.54	11.10	10.76	0.34	89.70	1.50
	05/08/03	100.54	11.32	11.01	0.31	89.45	4.00
	05/23/03	100.54	11.83	11.65	0.18	88.85	2.50
	05/28/03	100.54	11.06	10.87	0.19	89.62	1.00
	06/06/03	100.54	9.55	9.48	0.07	91.04	0.50
	06/09/03	100.54	9.44	9.15	0.29	91.32	2.50
	06/26/03	100.54	9.89	9.35	0.54	91.06	2.50
	07/10/03	100.54	11.89	10.22	1.67	89.90	3.00
	07/17/03	100.54	10.83	10.68	0.15	89.82	0.50
	08/18/03	100.54	10.90			89.64	
	08/20/03	100.54	10.25	10.24	0.01	90.30	0.10
	09/19/03	100.54	10.29			90.25	
	09/25/03	100.54	10.24			90.30	
	10/15/03	100.54	10.31			90.23	
	11/18/03	100.54	11.17			89.37	
	11/20/03	100.54	10.75			89.79	
	12/17/03	100.54	11.15			89.39	
	01/29/04	100.54	10.68			89.86	
	02/09/04	100.54	11.68			88.86	
	02/13/04	100.54	11.59			88.95	
SVE-5	02/06/02	NM	11.02			NM	
	05/22/02	NM	8.42			NM	
	06/25/02	NM	9.21	9.20	0.01	NM	
	07/10/02	NM	9.42	9.41	0.01	NM	1.00
	07/12/02	NM	9.52	9.51	0.01	NM	

NM = Not Measured

NA = Not Accessible

D = Dry

Water Level Elevations for product wells are calculated using a 0.75 correction factor.

Well Gauging Data Hess Station 32517- Inwood

401 West 207th Street
New York, NY

Well	Date	Gauge Point Elevation (ft.)	Depth to Water (ft.)	Depth to Product (ft.)	Product Thickness (ft.)	Water Level Elevation (ft.)	Recovered Product (gal.)
	07/24/02	NM	9.65			NM	
	08/14/02	NM	9.98			NM	
	11/18/02	NM	8.65			NM	
	02/11/03	99.21	7.80			91.41	
	05/28/03	99.21	NA			NA	
	06/06/03	99.21	8.33			90.88	
	06/11/03	99.21	8.24			90.97	
	08/20/03	99.21	8.87			90.34	
	11/20/03	99.21	9.23			89.98	
	02/09/04	99.21	10.18			89.03	
TF-1	05/24/02	NM	8.45			NM	
	06/13/02	NM	8.38			NM	
	07/12/02	NM	9.14			NM	
	07/24/02	NM	9.38			NM	
	12/02/02	NM	8.15			NM	
TF-2	05/24/02	NM	8.71			NM	
	06/13/02	NM	8.63			NM	
	07/12/02	NM	9.39			NM	
	07/24/02	NM	9.64			NM	
	12/02/02	NM	8.41			NM	
TF-3	05/24/02	NM	7.99			NM	
	06/13/02	NM	7.91			NM	
	07/12/02	NM	8.68			NM	
	07/24/02	NM	8.92			NM	
	12/02/02	NM	7.68			NM	
TF-4	05/24/02	NM	7.89			NM	
	06/13/02	NM	7.80			NM	
	07/12/02	NM	8.54			NM	
	07/24/02	NM	8.80			NM	
	12/02/02	NM	7.57			NM	

NM = Not Measured

NA = Not Accessible

D = Dry

Water Level Elevations for product wells are calculated using a 0.75 correction factor.

Summary of Vac Truck Events

Hess Station 32517- Inwood

401 West 207th Street

New York, NY

Well	Date	Event Length (hrs.)	Pre-Event Depth to Water (ft.)	Pre-Event Depth to Product (ft.)	Pre-Event Product Thickness (ft.)	Post-Event Depth to Water (ft.)	Post-Event Depth to Product (ft.)	Post-Event Product Thickness (ft.)	Recovered Product (gal.)	Total Recovery (Product and GW) (gal.)	Did Well Go Dry?
SVE-4	05/24/02	4.0	10.60	9.89	0.71	10.55	10.48	0.07	5.00	115	No
	06/25/02	5.0	12.61	10.42	2.19	11.44	11.43	0.01	11.00	204	No
	07/12/02	5.0	11.59	10.54	1.05	11.40	-	-	8.00	205	No
	08/14/02	4.5	12.60	11.07	1.53	11.98	11.85	0.13	7.00	189	No

NM = Not Measured

NA = Not Accessible

D = Dry

Summary of Groundwater Sampling Data

Hess Station 32517- Inwood

401 West 207th Street

New York, NY

Well	Date	Benzene (ppb)	Toluene (ppb)	Ethylbenzene (ppb)	Xylenes (ppb)	BTEX (ppb)	MTBE (ppb)	D.O. (ppm)	Temp. (°C)
MW-1	05/20/99	220	450	39	400	1,109	730	NM	NM
	01/18/01	440	ND	83	200	723	390	0.07	16.9
	05/31/01	54	ND	ND	17	71	700	NM	NM
	08/09/01	860	ND	100	278	1,238	2,800	NM	NM
	11/27/01	520	60	ND	512	1,092	710	1.24	19.2
	02/06/02	610	10	57	72.8	749.8	170	0.35	17.1
	05/22/02	930	1,400	450	1,990	4,770	970	1.28	16.1
	08/14/02	470	88	360	438	1,356	640	0.68	25.4
	11/18/02	440	240	160	380	1,220	3,000	3.08	17.3
	02/11/03	320	140	100	380	940	220	0.90	14.5
	05/28/03	6.6	11	8.9	35	61.5	110	1.11	17.0
	08/20/03	ND	ND	ND	ND	ND	92	2.05	24.8
	11/20/03	1.7	ND	1.7	8.2	11.6	3.3	1.05	15.5
	02/09/04	22	13	33	63	131	20	0.91	15.0
MW-2	05/20/99	NSP	NSP	NSP	NSP	NSP	NSP	NM	NM
	01/18/01	14,000	34,000	1,600	19,000	68,600	660	0.88	16.3
	05/31/01	9,300	17,000	880	13,900	41,080	270	NM	NM
	08/09/01	13,000	20,000	880	14,600	48,480	360	NM	NM
	11/27/01	15,000	35,000	870	35,600	86,470	390	0.76	19.9
	02/06/02	5,300	14,000	900	14,100	34,300	190	0.35	17.2
	05/22/02	62	650	55	840	1,607	ND	1.36	16.3
	08/14/02	3,100	2,000	370	6,400	11,870	75	0.61	24.3
11/18/02	4,600	4,700	330	5,400	15,030	70	1.78	18.4	

ND = Not Detected
D = Dry

NM = Not Measured
NS = Not Sampled

NA = Not Accessible
NSP = Not Sampled due to Product

Summary of Groundwater Sampling Data

Hess Station 32517- Inwood

401 West 207th Street

New York, NY

Well	Date	Benzene (ppb)	Toluene (ppb)	Ethylbenzene (ppb)	Xylenes (ppb)	BTEX (ppb)	MTBE (ppb)	D.O. (ppm)	Temp. (°C)
MW-3	02/11/03	8,700	20,000	620	8,100	37,420	120	0.97	14.6
	05/28/03	NSP	NSP	NSP	NSP	NSP	NSP	NSP	NSP
	08/20/03	6,100	38,000	5,500	92,000	141,600	ND	NM	NM
	11/20/03	7,800	25,000	2,400	27,800	63,000	ND	NM	NM
	02/09/04	NSP	NSP	NSP	NSP	NSP	NSP	NSP	NSP
	05/20/99	ND	ND	ND	ND	ND	1	NM	NM
	01/18/01	ND	ND	ND	ND	ND	ND	1.08	15.3
	05/31/01	ND	ND	ND	ND	ND	ND	NM	NM
	08/09/01	ND	2.4	ND	9.2	11	ND	NM	NM
	11/27/01	ND	1.3	ND	5.6	6.9	ND	1.00	20.1
	02/06/02	ND	ND	ND	ND	ND	1.8	0.68	17.8
	05/22/02	ND	ND	ND	ND	ND	ND	2.27	16.0
	08/14/02	ND	ND	ND	1.0	1.0	ND	0.52	24.2
	11/18/02	ND	ND	ND	ND	ND	ND	4.07	17.3
	02/11/03	ND	ND	ND	ND	ND	ND	0.91	14.7
05/28/03	ND	ND	ND	ND	ND	ND	2.51	16.0	
MW-4	08/20/03	ND	ND	ND	ND	ND	ND	2.71	22.1
	11/20/03	ND	ND	2.7	4.6	7.3	ND	0.91	15.1
	02/09/04	ND	ND	ND	ND	ND	ND	0.81	15.2
	05/20/99	700	1,800	1,100	12,000	15,600	900	NM	NM
	01/18/01	290	53	660	2,700	3,703	81	0.37	16.8
	05/31/01	370	100	800	1,330	2,600	440	NM	NM
	08/09/01	370	110	790	2,200	3,470	950	NM	NM

ND = Not Detected
D = Dry

NM = Not Measured
NS = Not Sampled

NA = Not Accessible
NSP = Not Sampled due to Product

Summary of Groundwater Sampling Data

Hess Station 32517- Inwood

401 West 207th Street

New York, NY

Well	Date	Benzene (ppb)	Toluene (ppb)	Ethylbenzene (ppb)	Xylenes (ppb)	BTEX (ppb)	MTBE (ppb)	D.O. (ppm)	Temp. (°C)
	11/27/01	560	78	960	2,090	3,688	1,000	0.74	19.8
	02/06/02	460	33	900	686	2,079	770	0.32	17.6
	05/22/02	40	16	41	430	527	310	1.02	16.8
	08/14/02	66	11	24	490	591	100	0.17	21.7
	11/18/02	71	96	210	1,130	1,507	1,000	3.88	16.2
	02/11/03	31	32	ND	820	883	1,500	0.96	14.0
	05/28/03	80	ND	ND	460	540	14,000	1.02	16.7
	08/20/03	390	120	710	4,130	5,350	5,200	2.81	24.1
	11/20/03	ND	ND	440	2,580	3,020	4,500	0.89	15.2
	02/09/04	49	71	23	413	556	300	0.99	15.2
MW-5	05/20/99	1,800	19,000	2,700	25,000	48,500	ND	NM	NM
	01/18/01	560	41	1,200	2,500	4,301	ND	1.68	16.5
	05/31/01	570	270	820	2,540	4,200	ND	NM	NM
	08/09/01	450	840	610	3,300	5,200	ND	NM	NM
	11/27/01	600	45	130	2,010	2,785	10	0.66	19.5
	02/06/02	290	7.8	470	400	1,167.8	8.4	0.28	17.5
	05/22/02	ND	1.1	1.0	3.0	5.1	ND	1.02	16.9
	08/14/02	84	2.9	160	140	386.9	4.9	0.71	22.9
	11/18/02	3,400	8,800	1,500	8,200	21,900	62	3.12	15.6
	02/11/03	32	18	ND	480	530	110	0.89	14.6
	05/28/03	87	42	160	980	1,269	7.8	1.08	17.8
	08/20/03	5.6	9.3	49	190	253.9	ND	2.22	25.8
	11/20/03	8.2	6.3	38	17.2	69.7	4	1.10	15.3

ND = Not Detected
D = Dry

NM = Not Measured
NS = Not Sampled

NA = Not Accessible
NSP = Not Sampled due to Product

Summary of Groundwater Sampling Data

Hess Station 32517- Inwood

401 West 207th Street

New York, NY

Well	Date	Benzene (ppb)	Toluene (ppb)	Ethylbenzene (ppb)	Xylenes (ppb)	BTEX (ppb)	MTBE (ppb)	D.O. (ppm)	Temp. (°C)
MW-6	02/09/04	NA	NA	NA	NA	NA	NA	NA	NA
	02/13/04	ND	ND	ND	ND	ND	ND	NM	NM
	05/20/99	4,100	500	ND	2,200	6,800	800,000	NM	NM
	01/18/01	4,700	ND	90	350	5,140	160,000	0.42	16.7
	05/31/01	4,200	76	140	839	5,255	110,000	NM	NM
	08/09/01	5,700	71	180	843	6,790	56,000	NM	NM
	11/27/01	2,600	16	ND	92	2,708	19,000	0.82	20.7
	02/06/02	NA	NA	NA	NA	NA	NA	NA	NA
	05/22/02	1,900	640	1,400	7,600	11,540	2,700	0.73	17.3
	08/14/02	1,600	ND	520	740	2,860	5,800	0.14	21.0
	11/18/02	91	6.7	61	185	343.7	120	3.23	17.0
	02/11/03	370	300	770	4,400	5,840	1,100	0.93	14.9
	05/28/03	130	ND	ND	1,920	2,050	350	1.11	17.7
	08/20/03	ND	ND	ND	ND	ND	2.9	3.92	24.1
	11/20/03	ND	ND	ND	ND	ND	1,300	0.81	15.2
02/09/04	160	220	170	1,290	1,840	1,200	0.79	15.0	
MW-7	05/20/99	38	1.3	11	8.2	58.5	1,900	NM	NM
	01/18/01	420	5.3	6	15	446	75	0.83	17.0
	05/31/01	63	3.2	ND	ND	66	41	NM	NM
	08/09/01	30	ND	ND	1.2	31	25	NM	NM
	11/27/01	240	5.1	4	9.5	259	55	0.98	20.3
	02/06/02	NA	NA	NA	NA	NA	NA	NA	NA
	05/22/02	ND	ND	ND	ND	ND	10	3.60	16.4

ND = Not Detected
D = Dry

NM = Not Measured
NS = Not Sampled

NA = Not Accessible
NSP = Not Sampled due to Product

Summary of Groundwater Sampling Data

Hess Station 32517- Inwood

401 West 207th Street

New York, NY

Well	Date	Benzene (ppb)	Toluene (ppb)	Ethylbenzene (ppb)	Xylenes (ppb)	BTEX (ppb)	MTBE (ppb)	D.O. (ppm)	Temp. (°C)
MW-8	08/14/02	16	ND	ND	ND	16	6.3	0.71	24.6
	11/18/02	1.4	ND	ND	ND	1.4	5.4	3.36	16.0
	02/11/03	ND	ND	ND	ND	ND	73	0.92	14.7
	05/28/03	ND	ND	ND	ND	ND	12	0.98	17.1
	08/20/03	ND	ND	ND	ND	ND	3.2	3.49	25.5
	11/20/03	ND	ND	ND	ND	ND	ND	0.98	15.4
	02/09/04	NA	NA	NA	NA	NA	NA	NA	NA
	02/13/04	NA	NA	NA	NA	NA	NA	NA	NA
	02/06/02	1,400	950	98	9,900	12,348	610	0.22	17.7
	05/22/02	3.8	2.6	5.4	35	46.8	32	1.41	17.7
	08/14/02	260	97	300	1,790	2,447	340	0.27	21.5
	11/18/02	94	69	130	1,210	1,503	1,900	4.66	17.3
	02/11/03	240	620	620	6,600	8,080	8,600	0.90	14.9
	05/28/03	2.9	ND	ND	175	177.9	180	1.08	17.4
	08/20/03	ND	ND	ND	4.8	4.8	1,300	2.48	24.8
11/20/03	ND	ND	ND	55	55	900	0.99	15.5	
MW-9	02/09/04	200	900	28	335	1,463	890	0.81	16.0
	02/06/02	5,000	100	ND	510	5,610	11,000	0.35	18.1
	05/22/02	3,600	300	530	2,620	7,050	9,400	0.91	17.7
	08/14/02	3,600	ND	650	2,100	6,350	13,000	0.20	21.3
	11/18/02	220	58	280	1,600	2,158	1,000	4.33	17.1
	02/11/03	1,000	230	1,100	3,500	5,830	2,800	0.93	14.6
05/28/03	480	21	ND	1,100	1,601	1,500	1.07	17.3	

ND = Not Detected
D = Dry

NM = Not Measured
NS = Not Sampled

NA = Not Accessible
NSP = Not Sampled due to Product

Summary of Groundwater Sampling Data

Hess Station 32517- Inwood

401 West 207th Street

New York, NY

Well	Date	Benzene (ppb)	Toluene (ppb)	Ethylbenzene (ppb)	Xylenes (ppb)	BTEX (ppb)	MTBE (ppb)	D.O. (ppm)	Temp. (°C)
SVE-1	08/20/03	ND	ND	ND	1.8	1.8	34	2.84	24.0
	11/20/03	8.9	ND	ND	8.3	17.2	380	1.11	15.0
	02/09/04	990	180	590	3,240	5,000	4,100	0.71	15.2
	05/20/99	NS	NS	NS	NS	NS	NS	NM	NM
	01/18/01	6,200	34,000	7,600	40,000	87,800	5,200	1.70	16.4
	05/31/01	1,400	10,000	1,900	18,300	31,600	16,000	NM	NM
	08/09/01	2,400	15,000	2,600	17,700	37,700	15,000	NM	NM
	11/27/01	5,900	24,000	5,200	31,800	66,900	8,000	0.89	19.2
	02/06/02	2,200	13,000	2,500	18,100	35,800	8,600	0.15	17.3
	05/22/02	220	2,400	3,200	22,100	27,920	300	0.62	16.8
	08/14/02	630	5,000	2,800	20,800	29,230	900	0.83	21.8
	11/18/02	4,400	3,000	2,700	21,400	31,500	74,000	4.73	17.3
	02/11/03	670	3,700	2,800	21,800	28,970	23,000	0.96	14.0
	05/28/03	470	1,100	ND	12,700	14,270	58,000	0.89	17.3
	08/20/03	1,400	240	600	6,900	9,140	8,600	2.81	22.1
11/20/03	D	D	D	D	D	D	D	D	
02/09/04	D	D	D	D	D	D	D	D	
SVE-2	05/20/99	NS	NS	NS	NS	NS	NS	NM	NM
	01/18/01	3,500	260	160	980	4,900	9,500	0.42	15.7
	05/31/01	440	11	30	66	547	3,700	NM	NM
	08/09/01	390	3	7.4	36	436	67	NM	NM
	11/27/01	720	15	20	70	825	2,700	0.86	20.1
	02/06/02	360	ND	11	17	388	100	0.28	17.1

ND = Not Detected
D = Dry

NM = Not Measured
NS = Not Sampled

NA = Not Accessible
NSP = Not Sampled due to Product

Summary of Groundwater Sampling Data

Hess Station 32517- Inwood

401 West 207th Street

New York, NY

Well	Date	Benzene (ppb)	Toluene (ppb)	Ethylbenzene (ppb)	Xylenes (ppb)	BTEX (ppb)	MTBE (ppb)	D.O. (ppm)	Temp. (°C)
SVE-3	05/22/02	660	940	150	620	2,370	810	1.37	16.3
	08/14/02	170	4.6	29	104	307.6	77	0.66	25.8
	11/18/02	80	4.1	9.4	53	146.5	33	3.79	17.2
	02/11/03	ND	ND	ND	ND	ND	220	0.98	14.8
	05/28/03	1.5	ND	ND	ND	1.5	36	1.51	17.4
	08/20/03	ND	ND	ND	ND	ND	1.8	3.10	25.1
	11/20/03	ND	9.6	ND	26.9	36.5	1.3	0.89	15.8
	02/09/04	ND	ND	ND	ND	ND	2.5	0.82	15.4
	05/20/99	NS	NS	NS	NS	NS	NS	NM	NM
	01/18/01	D	D	D	D	D	D	1.08	16.3
	05/31/01	970	1,700	99	1,250	4,019	300	NM	NM
	08/09/01	270	520	22	340	1,152	120	NM	NM
	11/27/01	250	190	ND	199	639	100	1.28	18.8
	02/06/02	D	D	D	D	D	D	D	D
	05/22/02	55	140	130	510	835	ND	1.16	16.7
	08/14/02	D	D	D	D	D	D	D	D
	11/18/02	D	D	D	D	D	D	D	D
	02/11/03	D	D	D	D	D	D	D	D
	05/28/03	NA	NA	NA	NA	NA	NA	NA	NA
	08/20/03	D	D	D	D	D	D	D	D
11/20/03	D	D	D	D	D	D	D	D	
02/09/04	D	D	D	D	D	D	D	D	
SVE-4	02/06/02	NSP	NSP	NSP	NSP	NSP	NSP	NSP	NSP

ND = Not Detected
D = Dry

NM = Not Measured
NS = Not Sampled

NA = Not Accessible
NSP = Not Sampled due to Product

Summary of Groundwater Sampling Data

Hess Station 32517- Inwood

401 West 207th Street

New York, NY

Well	Date	Benzene (ppb)	Toluene (ppb)	Ethylbenzene (ppb)	Xylenes (ppb)	BTEX (ppb)	MTBE (ppb)	D.O. (ppm)	Temp. (°C)
	05/22/02	NSP	NSP	NSP	NSP	NSP	NSP	NSP	NSP
	08/14/02	NSP	NSP	NSP	NSP	NSP	NSP	NSP	NSP
	11/18/02	NSP	NSP	NSP	NSP	NSP	NSP	NSP	NSP
	02/11/03	NSP	NSP	NSP	NSP	NSP	NSP	NSP	NSP
	05/28/03	NSP	NSP	NSP	NSP	NSP	NSP	NSP	NSP
	08/20/03	15,000	46,000	10,000	128,000	199,000	130,000	NM	NM
	11/20/03	2,300	16,000	4,300	55,000	77,600	21,000	0.91	15.6
	02/09/04	10,000	19,000	2,200	20,300	51,500	84,000	1.10	15.3
SVE-5	02/06/02	1,200	93	ND	1,840	3,133	3,300	0.37	16.4
	05/22/02	540	160	570	7,800	9,070	2,000	0.52	16.9
	08/14/02	1,300	1,000	990	10,000	13,290	2,100	0.53	25.1
	11/18/02	44	44	60	560	708	55	2.09	17.3
	02/11/03	ND	1.6	5.3	74	80.9	150	0.95	14.6
	05/28/03	NA	NA	NA	NA	NA	NA	NA	NA
	08/20/03	74	13	25	970	1,082	340	2.51	25.4
	11/20/03	ND	ND	ND	ND	ND	1.2	0.93	15.2
	02/09/04	ND	ND	ND	ND	ND	1.7	0.98	15.4

ND = Not Detected
D = Dry

NM = Not Measured
NS = Not Sampled

NA = Not Accessible
NSP = Not Sampled due to Product

Summary of SVE/AS System Data

Hess Station 32517- Inwood

401 West 207th Street

New York, NY

Date	Benzene (ppm)	Toluene (ppm)	Ethylbenzene (ppm)	Xylenes (ppm)	BTEX (ppm)	PID (ppm)	SVE Flow (cfm)	SVE Vac. ("H ₂ O)	AS Flow (cfm)	AS Press. (psi)	Benzene Emissions (lbs/hour)
01/14/03	ND	59.90	6.60	52.60	119.10	192.0	252	46	OFF	OFF	0.000
01/24/03	1.21	10.60	1.45	7.31	20.57	69.0	260	47	OFF	OFF	0.001
01/24/03	0.428	14.70	2.75	13.02	30.898	98.0	257	47	11	18	0.000
01/31/03	4.42	17.80	ND	14.49	36.71	58.0	252	46	NM*	NM*	0.004
02/07/03	1.70	14.30	ND	14.24	30.24	37.0	265	48	11	14	0.002
02/11/03	15.00	160.00	6.76	46.40	228.16	143.0	260	41	7	19	0.015
02/21/03	4.93	55.50	ND	39.79	100.22	51.0	265	41	24	7	0.005
02/26/03	1.91	22.70	ND	16.05	40.66	68.9	260	48	NM*	NM*	0.002
03/07/03	NM	NM	NM	NM	NM	61.0	260	48	NM*	NM*	NM
03/27/03	0.236	4.27	ND	8.98	13.486	112.0	268	50	10	19	0.000
04/11/03	NM	NM	NM	NM	NM	46.0	268	49	21	8	NM
04/24/03	0.567	19.80	ND	16.85	37.217	28.5	252	40	NM*	NM*	0.001
05/23/03	NM	NM	NM	NM	NM	68.0	224	67	20	7	NM
06/26/03	NM	NM	NM	NM	NM	48.0	250	38	9	18	NM
07/10/03	ND	1.13	0.732	3.30	5.162	37.5	245	40	9	19	0.000
08/18/03	ND	0.856	0.638	2.694	4.188	13.0	238	34	7	16	0.000
09/19/03	0.014	0.939	ND	0.945	1.898	16.1	253	38	NM*	NM*	0.000
09/25/03	NM	NM	NM	NM	NM	40.0	245	41	NM*	NM*	NM
10/27/03	2.00	1.42	ND	3.03	6.45	63.0	240	39	13	17	0.002
11/18/03	OFF	OFF	OFF	OFF	OFF	OFF	OFF	OFF	OFF	OFF	OFF
12/17/03	OFF	OFF	OFF	OFF	OFF	OFF	OFF	OFF	OFF	OFF	OFF
01/29/04	OFF	OFF	OFF	OFF	OFF	OFF	OFF	OFF	OFF	OFF	OFF

SVE start-up on 01/14/03

AS start-up on 01/24/03

Total Pounds/Hour = Flow (cfm) X Detected Concentration (ppm) / 266,710

ND = Not Detected

* = System between pulses

Summary of SVE/AS System Data

Hess Station 32517- Inwood

401 West 207th Street

New York, NY

Date	Benzene (ppm)	Toluene (ppm)	Ethylbenzene (ppm)	Xylenes (ppm)	BTEX (ppm)	PID (ppm)	SVE Flow (cfm)	SVE Vac. ("H ₂ O)	AS Flow (cfm)	AS Press. (psi)	Benzene Emissions (lbs/hour)
02/13/04	NM	NM	NM	NM	NM	244.0	231	41	NM*	NM*	NM

SVE start-up on 01/14/03

AS start-up on 01/24/03

Total Pounds/Hour = Flow (cfm) X Detected Concentration (ppm) / 266,710

ND = Not Detected

* = System between pulses

Summary of SVE/AS System Operation

Hess Station 32517- Inwood

401 West 207th Street

New York, NY

Date	SVE System Status	AS System Status	SVE Wells On-line	AS Wells On-line	Maintenance Description
01/14/03	Start-up	-	MW-1,2,4,6 SVE-4,5	-	SVE Start-up, AS System Installation not Completed
01/24/03	On	Start-up	MW-1,2,4,6 SVE-4,5	AS-1,2,3,4 AS/SVE-1,2,3,5	SVE Monitoring, AS Start-up
01/31/03	On	Off*	MW-1,2,4,6 SVE-4,5	AS-1,2,3,4 AS/SVE-1,2,3,5	System Monitoring
02/07/03	On	On	MW-1,2,4,6 SVE-4,5	AS-1,2,3,4 AS/SVE-1,2,3,5	System Monitoring, Turn System Off for GW Sampling
02/11/03	Off-Restart	Off-Restart	MW-2,4,5,6,7 SVE-1,4	AS-1,2,3,4 AS/SVE-1,2,3,5	Restart System following GW Sampling, System Monitoring
02/21/03	On	On	MW-2,4,5,6,7 SVE-1,4	AS-1,2,3,4 AS/SVE-1,2,3,5	System Monitoring
02/26/03	On	On	MW-2,5,6,7 SVE-1,4,5	AS-1,2,3,4 AS/SVE-1,2,3,5	System Monitoring
03/07/03	On	On	MW-2,5,6,7 SVE-1,4,5	AS-1,2,3,4 AS/SVE-1,2,3,5	System Monitoring
03/27/03	On	On	MW-2,5,6,7 SVE-1,4,5	AS-1,2,3,4 AS/SVE-1,2,3,5	System Monitoring
04/11/03	On	On	MW-2,5,6,7 SVE-1,4,5	AS-1,2,3,4 AS/SVE-1,2,3,5	System Monitoring
04/24/03	On	Off*	MW-2,5,6,7 SVE-1,4	AS-1,2,3,4 AS/SVE-1,2,3	System Monitoring, AS/SVE-5 Damaged
05/23/03	On	On	MW-2,5,6,7 SVE-1,4	AS-2,3,4 AS/SVE-1,2	System Monitoring, AS/SVE-3 and AS-1 Damaged, Turn System Off
06/26/03	Off-Restart	Off-Restart	MW-2,5,8,9 SVE-1,2,4	AS-1,2,3 AS/SVE-1,2	Restart System, System Monitoring
07/10/03	On	On	MW-2,5,8,9 SVE-1,2,4	AS-1,2,3 AS/SVE-1,2	System Monitoring
08/18/03	On	On	MW-2,5,8,9 SVE-1,2,4	AS-1,2,3 AS/SVE-1,2	System Monitoring, Turn System Off for GW Sampling
09/19/03	On	Off*	MW-2,5,8,9 SVE-1,2,4	AS-1,2,3 AS/SVE-1,2	System Monitoring
09/25/03	On	Off*	MW-2,5,8,9 SVE-1,2,4	AS-1,2,3 AS/SVE-1,2	System Monitoring
10/27/03	On	On	MW-2,4,6 SVE-1,4,5	AS-2,3 AS/SVE-1,4	System Tweaking and Monitoring
11/18/03	Off	Off	-	-	System Off Upon Arrival, Leave System Off for Blower Repair
12/17/03	Off	Off	-	-	System Off for Blower Repair
01/29/04	Off	Off	-	-	System Off for Blower Repair
02/13/04	Off-Restart	Off-Restart	MW-2,4,6 SVE-1,4,5	AS-2,3,4 AS/SVE-4	Replace Blower, Restart System, System Monitoring

SVE start-up on 01/14/03

AS start-up on 01/24/03

* = System between pulses

TOXIKON CORPORATION
15 WIGGINS AVENUE
BEDFORD, MA 01730
TEL: (781) 275-3330

RECEIVED
FEB 20 2004
BY: _____

February 13, 2004

Ed Russo
ENVIROTRAC
80-B AIR PARK DRIVE
RONKONKOMA, NY 11779

TEL: (631) 471-1500
FAX (631) 471-6363

RE: Hess #32517 - Inwood

Order No.: 0402069

Dear Ed Russo:

Toxikon received 9 samples on 2/11/2004 for the analyses presented in the following report.

Unless noted in the report, there were no problems with the analyses and all data for associated QC met EPA or laboratory specifications.

If you have any questions regarding these test results, please feel free to call.

Sincerely,



Doug Sheeley

Certifications: MA: MA 064, NH: 204099D and 204099E, ME: MA064, RI: 55, VT: MA064, TN: MA064
NY: 10778, FL: E87143 and 87394, NC: 286, PA 68-461, CT: PH 0563, NJ: 59538, MD:

Toxikon

Date: 13-Feb-04

CLIENT: ENVIROTRAC
Project: Hess #32517 - Inwood
Lab Order: 0402069

Work Order Sample Summary

Lab Sample ID	Client Sample ID	Tag Number	Collection Date	Date Received
0402069-01A	MW - 1		2/9/2004 7:30:00 AM	2/11/2004
0402069-02A	MW - 3		2/9/2004 8:00:00 AM	2/11/2004
0402069-03A	MW - 4		2/9/2004 8:30:00 AM	2/11/2004
0402069-04A	MW - 6		2/9/2004 9:00:00 AM	2/11/2004
0402069-05A	MW - 8		2/9/2004 9:30:00 AM	2/11/2004
0402069-06A	MW - 9		2/9/2004 10:00:00 AM	2/11/2004
0402069-07A	SVE - 2		2/9/2004 10:30:00 AM	2/11/2004
0402069-08A	SVE - 4		2/9/2004 11:00:00 AM	2/11/2004
0402069-09A	SVE - 5		2/9/2004 11:30:00 AM	2/11/2004

Toxikon

Date: 13-Feb-04

CLIENT: ENVIROTRAC
Lab Order: 0402069
Project: Hess #32517 - Inwood
Lab ID: 0402069-01A

Client Sample ID: MW - 1
Tag Number:
Collection Date: 2/9/2004 7:30:00 AM
Matrix: GROUNDWATER

Analyses	Result	Limit	Qual	Units	DF	Date Analyzed
PURGEABLE AROMATICS		E602				Analyst: EPC
Benzene	22	1.0		µg/L	1	2/12/2004 9:59:00 AM
Ethylbenzene	33	1.0		µg/L	1	2/12/2004 9:59:00 AM
m,p-Xylene	43	2.0		µg/L	1	2/12/2004 9:59:00 AM
Methyl tert-butyl ether	20	1.0		µg/L	1	2/12/2004 9:59:00 AM
o-Xylene	20	1.0		µg/L	1	2/12/2004 9:59:00 AM
Toluene	13	1.0		µg/L	1	2/12/2004 9:59:00 AM

Qualifiers: ND - Not Detected at the Reporting Limit
J - Analyte detected below quantitation limits
B - Analyte detected in the associated Method Blank
* - Value exceeds Maximum Contaminant Level

S - Spike Recovery outside accepted recovery limits
R - RPD outside accepted recovery limits
E - Value above quantitation range

Toxikon

Date: 13-Feb-04

CLIENT: ENVIROTRAC
Lab Order: 0402069
Project: Hess #32517 - Inwood
Lab ID: 0402069-02A

Client Sample ID: MW - 3
Tag Number:
Collection Date: 2/9/2004 8:00:00 AM
Matrix: GROUNDWATER

Analyses	Result	Limit	Qual	Units	DF	Date Analyzed
PURGEABLE AROMATICS		E602				Analyst: EPC
Benzene	ND	1.0		µg/L	1	2/12/2004 9:22:00 AM
Ethylbenzene	ND	1.0		µg/L	1	2/12/2004 9:22:00 AM
m,p-Xylene	ND	2.0		µg/L	1	2/12/2004 9:22:00 AM
Methyl tert-butyl ether	ND	1.0		µg/L	1	2/12/2004 9:22:00 AM
o-Xylene	ND	1.0		µg/L	1	2/12/2004 9:22:00 AM
Toluene	ND	1.0		µg/L	1	2/12/2004 9:22:00 AM

Qualifiers: ND - Not Detected at the Reporting Limit
J - Analyte detected below quantitation limits
B - Analyte detected in the associated Method Blank
* - Value exceeds Maximum Contaminant Level

S - Spike Recovery outside accepted recovery limits
R - RPD outside accepted recovery limits
E - Value above quantitation range

Toxikon

Date: 13-Feb-04

CLIENT: ENVIROTRAC
Lab Order: 0402069
Project: Hess #32517 - Inwood
Lab ID: 0402069-03A

Client Sample ID: MW - 4
Tag Number:
Collection Date: 2/9/2004 8:30:00 AM
Matrix: GROUNDWATER

Analyses	Result	Limit	Qual	Units	DF	Date Analyzed
PURGEABLE AROMATICS		E602				Analyst: EPC
Benzene	49	5.0		µg/L	5	2/11/2004 3:41:00 PM
Ethylbenzene	23	5.0		µg/L	5	2/11/2004 3:41:00 PM
m,p-Xylene	330	10		µg/L	5	2/11/2004 3:41:00 PM
Methyl tert-butyl ether	300	5.0		µg/L	5	2/11/2004 3:41:00 PM
o-Xylene	83	5.0		µg/L	5	2/11/2004 3:41:00 PM
Toluene	71	5.0		µg/L	5	2/11/2004 3:41:00 PM

Qualifiers: ND - Not Detected at the Reporting Limit
J - Analyte detected below quantitation limits
B - Analyte detected in the associated Method Blank
* - Value exceeds Maximum Contaminant Level

S - Spike Recovery outside accepted recovery limits
R - RPD outside accepted recovery limits
E - Value above quantitation range

Toxikon

Date: 13-Feb-04

CLIENT: ENVIROTRAC
Lab Order: 0402069
Project: Hess #32517 - Inwood
Lab ID: 0402069-04A

Client Sample ID: MW - 6
Tag Number:
Collection Date: 2/9/2004 9:00:00 AM
Matrix: GROUNDWATER

Analyses	Result	Limit	Qual	Units	DF	Date Analyzed
PURGEABLE AROMATICS		E602				Analyst: EPC
Benzene	160	20		µg/L	20	2/12/2004 12:26:00 PM
Ethylbenzene	170	20		µg/L	20	2/12/2004 12:26:00 PM
m,p-Xylene	760	40		µg/L	20	2/12/2004 12:26:00 PM
Methyl tert-butyl ether	1200	20		µg/L	20	2/12/2004 12:26:00 PM
o-Xylene	530	20		µg/L	20	2/12/2004 12:26:00 PM
Toluene	220	20		µg/L	20	2/12/2004 12:26:00 PM

Qualifiers: ND - Not Detected at the Reporting Limit
J - Analyte detected below quantitation limits
B - Analyte detected in the associated Method Blank
* - Value exceeds Maximum Contaminant Level

S - Spike Recovery outside accepted recovery limits
R - RPD outside accepted recovery limits
E - Value above quantitation range

Toxikon

Date: 13-Feb-04

CLIENT: ENVIROTRAC
Lab Order: 0402069
Project: Hess #32517 - Inwood
Lab ID: 0402069-05A

Client Sample ID: MW - 8
Tag Number:
Collection Date: 2/9/2004 9:30:00 AM
Matrix: GROUNDWATER

Analyses	Result	Limit	Qual	Units	DF	Date Analyzed
PURGEABLE AROMATICS		E602				Analyst: EPC
Benzene	200	10		µg/L	10	2/12/2004 4:06:00 PM
Ethylbenzene	28	10		µg/L	10	2/12/2004 4:06:00 PM
m,p-Xylene	240	20		µg/L	10	2/12/2004 4:06:00 PM
Methyl tert-butyl ether	890	10		µg/L	10	2/12/2004 4:06:00 PM
o-Xylene	95	10		µg/L	10	2/12/2004 4:06:00 PM
Toluene	900	10		µg/L	10	2/12/2004 4:06:00 PM

Qualifiers: ND - Not Detected at the Reporting Limit
J - Analyte detected below quantitation limits
B - Analyte detected in the associated Method Blank
* - Value exceeds Maximum Contaminant Level

S - Spike Recovery outside accepted recovery limits
R - RPD outside accepted recovery limits
E - Value above quantitation range

Toxikon

Date: 13-Feb-04

CLIENT: ENVIROTRAC
Lab Order: 0402069
Project: Hess #32517 - Inwood
Lab ID: 0402069-06A

Client Sample ID: MW - 9
Tag Number:
Collection Date: 2/9/2004 10:00:00 AM
Matrix: GROUNDWATER

Analyses	Result	Limit	Qual	Units	DF	Date Analyzed
PURGEABLE AROMATICS		E602				Analyst: EPC
Benzene	990	5.0		µg/L	5	2/12/2004 11:12:00 AM
Ethylbenzene	590	5.0		µg/L	5	2/12/2004 11:12:00 AM
m,p-Xylene	2500	100		µg/L	5	2/12/2004 11:12:00 AM
Methyl tert-butyl ether	4100	50		µg/L	5	2/12/2004 11:12:00 AM
o-Xylene	740	5.0		µg/L	5	2/12/2004 11:12:00 AM
Toluene	180	5.0		µg/L	5	2/12/2004 11:12:00 AM

Qualifiers: ND - Not Detected at the Reporting Limit
J - Analyte detected below quantitation limits
B - Analyte detected in the associated Method Blank
* - Value exceeds Maximum Contaminant Level

S - Spike Recovery outside accepted recovery limits
R - RPD outside accepted recovery limits
E - Value above quantitation range

Toxikon

Date: 13-Feb-04

CLIENT: ENVIROTRAC
Lab Order: 0402069
Project: Hess #32517 - Inwood
Lab ID: 0402069-07A

Client Sample ID: SVE - 2
Tag Number:
Collection Date: 2/9/2004 10:30:00 AM
Matrix: GROUNDWATER

Analyses	Result	Limit	Qual	Units	DF	Date Analyzed
PURGEABLE AROMATICS		E602				Analyst: EPC
Benzene	ND	1.0		µg/L	1	2/12/2004 10:35:00 AM
Ethylbenzene	ND	1.0		µg/L	1	2/12/2004 10:35:00 AM
m,p-Xylene	ND	2.0		µg/L	1	2/12/2004 10:35:00 AM
Methyl tert-butyl ether	2.5	1.0		µg/L	1	2/12/2004 10:35:00 AM
o-Xylene	ND	1.0		µg/L	1	2/12/2004 10:35:00 AM
Toluene	ND	1.0		µg/L	1	2/12/2004 10:35:00 AM

Qualifiers:
ND - Not Detected at the Reporting Limit
J - Analyte detected below quantitation limits
B - Analyte detected in the associated Method Blank
* - Value exceeds Maximum Contaminant Level

S - Spike Recovery outside accepted recovery limits
R - RPD outside accepted recovery limits
E - Value above quantitation range

Toxikon

Date: 13-Feb-04

CLIENT: ENVIROTRAC
Lab Order: 0402069
Project: Hess #32517 - Inwood
Lab ID: 0402069-08A

Client Sample ID: SVE - 4
Tag Number:
Collection Date: 2/9/2004 11:00:00 AM
Matrix: GROUNDWATER

Analyses	Result	Limit	Qual	Units	DF	Date Analyzed
PURGEABLE AROMATICS		E602				Analyst: EPC
Benzene	10000	1000		µg/L	1000	2/11/2004 2:27:00 PM
Ethylbenzene	2200	1000		µg/L	1000	2/11/2004 2:27:00 PM
m,p-Xylene	14000	2000		µg/L	1000	2/11/2004 2:27:00 PM
Methyl tert-butyl ether	84000	1000		µg/L	1000	2/11/2004 2:27:00 PM
o-Xylene	6300	1000		µg/L	1000	2/11/2004 2:27:00 PM
Toluene	19000	1000		µg/L	1000	2/11/2004 2:27:00 PM

Qualifiers: ND - Not Detected at the Reporting Limit
J - Analyte detected below quantitation limits
B - Analyte detected in the associated Method Blank
* - Value exceeds Maximum Contaminant Level

S - Spike Recovery outside accepted recovery limits
R - RPD outside accepted recovery limits
E - Value above quantitation range

Toxikon

Date: 13-Feb-04

CLIENT: ENVIROTRAC
Lab Order: 0402069
Project: Hess #32517 - Inwood
Lab ID: 0402069-09A

Client Sample ID: SVE - 5
Tag Number:
Collection Date: 2/9/2004 11:30:00 AM
Matrix: GROUNDWATER

Analyses	Result	Limit	Qual	Units	DF	Date Analyzed
PURGEABLE AROMATICS		E602				Analyst: EPC
Benzene	ND	1.0		µg/L	1	2/12/2004 1:03:00 PM
Ethylbenzene	ND	1.0		µg/L	1	2/12/2004 1:03:00 PM
m,p-Xylene	ND	2.0		µg/L	1	2/12/2004 1:03:00 PM
Methyl tert-butyl ether	1.7	1.0		µg/L	1	2/12/2004 1:03:00 PM
o-Xylene	ND	1.0		µg/L	1	2/12/2004 1:03:00 PM
Toluene	ND	1.0		µg/L	1	2/12/2004 1:03:00 PM

Qualifiers:
ND - Not Detected at the Reporting Limit
J - Analyte detected below quantitation limits
B - Analyte detected in the associated Method Blank
* - Value exceeds Maximum Contaminant Level

S - Spike Recovery outside accepted recovery limits
R - RPD outside accepted recovery limits
E - Value above quantitation range

EnviroTrac Ltd.

80-B Air Park Drive
 Ronkonkoma, NY 11779
 (631) 471-1500 Fax (631) 471-6363
 Contact: Ed Russo

CHAIN OF CUSTODY - TOXIKON

Bill To: Amerada Hess *0402069*
 1 Hess Plaza
 Woodbridge, NJ 07095 *2/18/04*
 Attn: Mike Matri

Hess 32517 - Inwood
401 W. 207th Street
New York, NY

Lab ID	Date Sampled	Time Sampled	Sampler Initial	Matrix	No. of Cont.	Presrv.	EnviroTrac Sample ID	Analyses Required	Turnaround Requested	
1	2/17/04	7:30	M.A	GW	3	HCl	MW#1	BTEX/MTBE 602	Normal	
2	↓	8:00	↓	↓	↓	↓	MW#3	↓	↓	
3	↓	8:30	↓	↓	↓	↓	MW#4	↓	↓	
4	↓	9:00	↓	↓	↓	↓	MW#6	↓	↓	
5	↓	9:30	↓	↓	↓	↓	MW#8	↓	↓	
6	↓	10:00	↓	↓	↓	↓	MW#9	↓	↓	
7	↓	10:30	↓	↓	↓	↓	SVE-2	↓	↓	
8	↓	11:00	↓	↓	↓	↓	SVE-4	↓	↓	
9	↓	11:30	↓	↓	↓	↓	SVE-5	↓	↓	
Relinquished by: Mike Matri			Time/Date: 2/17/04 7:00			Received By: William J. McNameara			Time/Date: 2/17/04 9 AM	
Relinquished by: EC			Time/Date: 2/17/04 9 AM			Received By: William J. McNameara			Time/Date: 2/17/04 9 AM	

Cooler Temp 4cc

Comments:
 GW = Ground Water

TOXIKON CORPORATION
15 WIGGINS AVENUE
BEDFORD, MA 01730
TEL: (781) 275-3330

February 18, 2004

Ed Russo
ENVIROTRAC
80-B AIR PARK DRIVE
RONKONKOMA, NY 11779

TEL: (631) 471-1500
FAX (631) 471-6363

RE: Hess #32517 - Inwood

Order No.: 0402141

Dear Ed Russo:

Toxikon received 1 sample on 2/18/2004 for the analyses presented in the following report.

Unless noted in the report, there were no problems with the analyses and all data for associated QC met EPA or laboratory specifications.

If you have any questions regarding these test results, please feel free to call.

Sincerely,



Doug Sheeley

Certifications: MA: MA 064, NH: 204099D and 204099E, ME: MA064, RI: 55, VT: MA064, TN: MA064
NY: 10778, FL: E87143 and 87394, NC: 286, PA 68-461, CT: PH 0563, NJ: 59538, MD:

Toxikon

Date: 18-Feb-04

CLIENT: ENVIROTRAC
Project: Hess #32517 - Inwood
Lab Order: 0402141

Work Order Sample Summary

Lab Sample ID	Client Sample ID	Tag Number	Collection Date	Date Received
0402141-01A	MW - 5		2/13/2004 9:00:00 AM	2/18/2004

Toxikon

Date: 18-Feb-04

CLIENT: ENVIROTRAC
Lab Order: 0402141
Project: Hess #32517 - Inwood
Lab ID: 0402141-01A

Client Sample ID: MW - 5
Tag Number:
Collection Date: 2/13/2004 9:00:00 AM
Matrix: GROUNDWATER

Analyses	Result	Limit	Qual	Units	DF	Date Analyzed
PURGEABLE AROMATICS		E602				Analyst: EPC
Benzene	ND	1.0		µg/L	1	2/18/2004 1:44:00 PM
Ethylbenzene	ND	1.0		µg/L	1	2/18/2004 1:44:00 PM
m,p-Xylene	ND	2.0		µg/L	1	2/18/2004 1:44:00 PM
Methyl tert-butyl ether	ND	1.0		µg/L	1	2/18/2004 1:44:00 PM
o-Xylene	ND	1.0		µg/L	1	2/18/2004 1:44:00 PM
Toluene	ND	1.0		µg/L	1	2/18/2004 1:44:00 PM

Qualifiers:
ND - Not Detected at the Reporting Limit
J - Analyte detected below quantitation limits
B - Analyte detected in the associated Method Blank
* - Value exceeds Maximum Contaminant Level

S - Spike Recovery outside accepted recovery limits
R - RPD outside accepted recovery limits
E - Value above quantitation range

EnviroTrac Ltd.

80-B Air Park Drive
 Ronkonkoma, NY 11779
 (631) 471-1500 Fax (631) 471-6363
 Contact: Ed Russo

CHAIN OF CUSTODY - TOXIKON

Bill To: Amerada Hess
 1 Hess Plaza
 Woodbridge, NJ 07095
 Attn: Mike Matri

402141
2/25/04

Hess 32517 - Inwood
401 W. 207th Street
New York, NY

Lab ID	Date Sampled	Time Sampled	Sampler Initial	Matrix	No. of Cont.	Presrv.	EnviroTrac Sample ID	Analyses Required	Turnaround Requested
1	2-13-04	0900	THB	GW	3	HCI	MW-5	BTEX/MTBE 602	Normal

Relinquished by: <i>EC</i>	Time/Date: <i>1000 2-17-04</i>	Received By:	Time/Date	Comments:
Relinquished by: <i>EC</i>	Time/Date: <i>2/18/04 9AM</i>	Received By: <i>William J. McManis</i>	Time/Date <i>2/18/04 9AM</i>	GW = Ground Water

Cooler Temp 2°C