

<b>Project</b>	Bedford Beverly Brownfield Site	<b>Report No.</b>	74
<b>BCP Site</b>	BCP Site No. C224384	<b>Date</b>	1/22/2024
<b>Location</b>	2359 and 2360 Bedford Avenue, Brooklyn, NY	<b>File No.</b>	0205432
<b>Client</b>	Bedford Beverly Acquisitions LLC, Maman Contracting (Maman), International Concrete	<b>Temperature</b>	23-36°F
<b>Contractor</b>	Haley & Aldrich	<b>Wind Direction</b>	E to W, 6 mph
<b>Weather</b>	Cloudy	<b>Personnel on Site</b>	E. Nunez, D. Djombalic, A. Stewart, & C. Evertz
<b>Humidity</b>	69%	<b>Time on Site</b>	6:30 am to 3:00 pm

Haley & Aldrich of New York Engineering and Geology, LLP (Haley & Aldrich) was present to document implementation of the Remedial Action Work Plan (RAWP) prepared by Haley & Aldrich currently under review by NYSDEC and the NYSDEC-approved Change of Use dated 17 August 2023 to begin support of excavation work. Site observations are summarized below.

**Daily Observations:**

- Contractor (International Concrete) continued support of excavation (SOE) installation along the perimeter of Lots 14 and 53.

**Waste Disposal/Backfill Import Tracking:**

**Material Export:**

- 102 loads of non-hazardous fill material from grids WC-35(5-10), WC-23(5-10), WC-8(10-15), WC-12(0-5'), WC-20(5-10'), and WC-19(10-15').
- Soil/Fill disposal is summarized below:

	<i>Facility: Bayshore Soil Management, Keasbey, NJ (Non-Haz Soil)</i>		<i>Facility: P Park NJ LLC, Prospect Park, NJ (Non-Haz Soil)</i>		<i>Facility: Keystone Trade Center, Fairless Hills, PA (Non-Haz Soil)</i>	
<i>Today:</i>	0 Loads	0 CY	24 Loads	480 CY	15 Loads	300 CY
<i>Total:</i>	<u>292 Loads</u>	<u>5,840 CY</u>	<u>988 Loads</u>	<u>19,760 CY</u>	<u>604 Loads</u>	<u>12,080 CY</u>
	<i>Facility: Posillico Materials Permitted Wash Plant, LLC, Farmingdale, NY (Non-Haz Soil)</i>		<i>Facility: Republic Environmental Systems, LLC, Hatfield PA (Haz Soil)</i>		<i>Facility: Conestoga Republic Environmental Systems, LLC, Prospect Park, NJ (Non-Haz Soil)</i>	
<i>Today:</i>	63 Loads	1,260 CY	0 Loads	0 CY	0 Loads	0 CY
<i>Total:</i>	<u>479 Loads</u>	<u>9,580 CY</u>	<u>5 Loads</u>	<u>100 CY</u>	<u>44 Loads</u>	<u>880 CY</u>
<b>Sitewide Total</b>						
<i>Today:</i>	102 Loads	2,040 CY				
<i>Total:</i>	<u>2,503 Loads</u>	50,060 CY				

\*Note, 1 truck estimated at 20 cubic yards. Final tonnages will be present in the Final Engineering Report (FER)

- Asphalt disposal is summarized below:

	<i>Facility: Flushing Asphalt Recycling, Flushing NY (Asphalt)</i>		<i>Facility: Mount Materials, Fairless Hills, PA (Asphalt)</i>		<i>Totals:</i>	
<i>Today:</i>	0 Loads	0 CY	0 Loads	0 CY	0 Loads	0 CY
<i>Total:</i>	<u>117 Loads</u>	<u>2,340 CY</u>	<u>38 Loads</u>	<u>760 CY</u>	<u>155 Loads</u>	<u>3,100 CY</u>

\*Note, 1 truck estimated at 20 cubic yards. Final tonnages will be present in the Final Engineering Report (FER)

- C&D disposal is summarized below:

	<i>Facility: Mount Materials, Fairless Hills, PA (Non-Haz Concrete)</i>		<i>Totals:</i>	
<i>Today:</i>	0 Loads	0 CY	0 Loads	0 CY
<i>Total:</i>	<u>87 Loads</u>	<u>1,740 CY</u>	<u>87 Loads</u>	<u>1,740 CY</u>

\*Note, 1 truck estimated at 20 cubic yards. Final tonnages will be present in the Final Engineering Report (FER)

### Material Import:

- Material import is summarized below:

	<i>Facility: Mount Hope Quarry, Wharton, NJ (ASTM #57)</i>		<i>Facility: Mount Hope Quarry, Wharton, NJ (ASTM #3)</i>		<i>Totals:</i>	
<i>Today:</i>	0 Loads	0 CY	0 load	0 CY	0 Loads	0 CY
<i>Total:</i>	<u>5 Loads</u>	<u>100 CY</u>	<u>18 loads</u>	<u>340 CY</u>	<u>23 Loads</u>	<u>441 CY</u>

\*Note, 1 truck estimated at 20 cubic yards. Final tonnages will be present in the Final Engineering Report (FER)

### Samples Collected:

- No samples collected.

### CAMP Activities:

- Air monitoring during ground-intrusive activities was performed at four locations during ground intrusive work from 6:45 am to 2:30 pm. No 15-minute average concentration of volatiles organic compounds (VOCs) or particulate 15-minute average concentration of matter smaller than 10 microns in diameter (PM10) exceeded the action levels. No visible dust was observed leaving the site perimeter.

**Activities Planned for Coming Week:**

- Contractor (International Concrete) will continue stockpiling soil on the perimeter of Lot 14 for disposal.
- Contractor (International Concrete) will continue stockpiling soil on the perimeter of Lot 53 for disposal.
- Contractor (International Concrete) will continue installing H piles as part of SOE installation on the perimeter of the site.
- Contractor (International Concrete) will continue transportation and disposal of soil/fill to an approved facility.

**Site Photographs:**



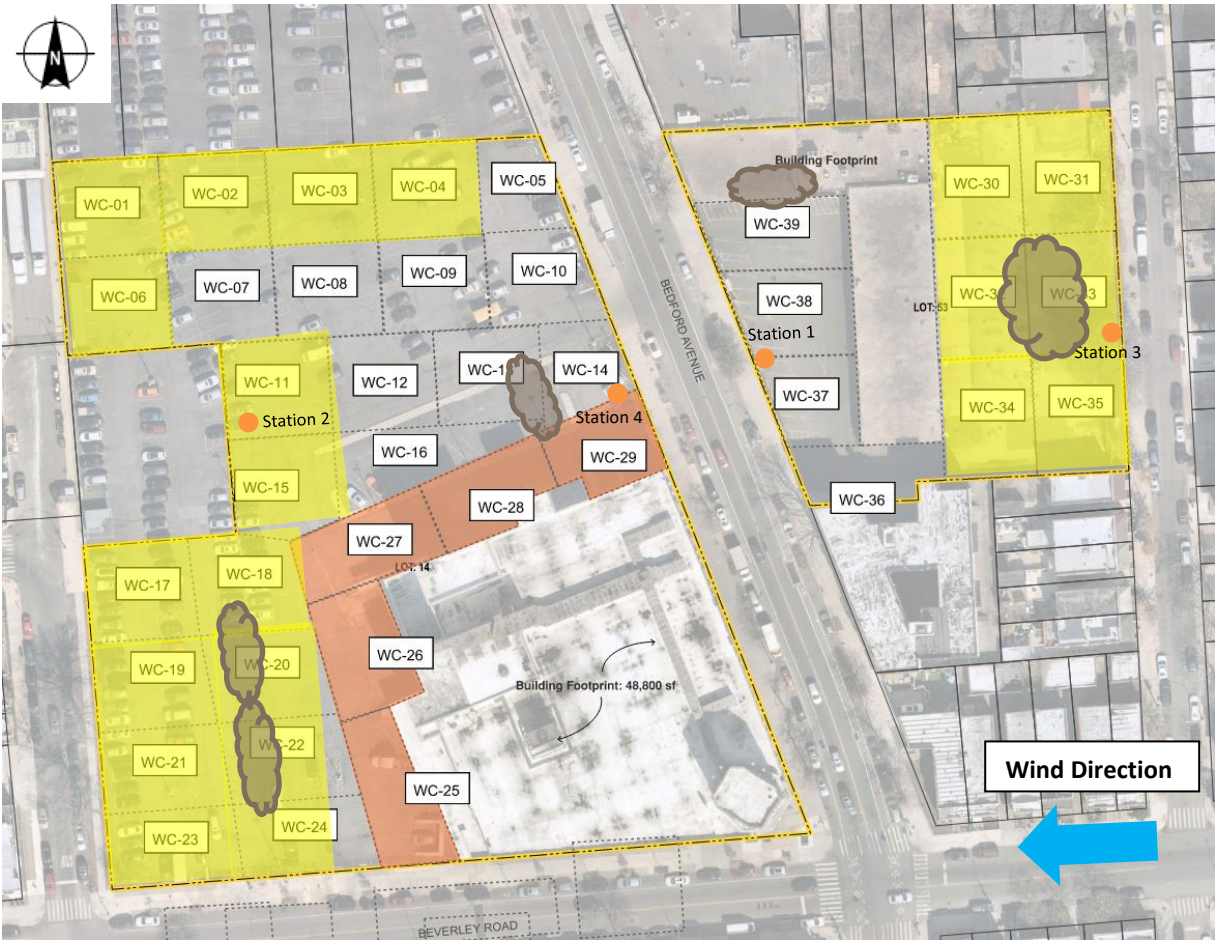
*Photo 1: View of piles installation on Lot 53, facing south-southeast.*



*Photo 2: View of contractor loading soil in Lot 14, facing north.*

**Site Plan:**

Reference: Waste Characterization Letter Figure 3 Grid Location Map, prepared by Haley & Aldrich, dated October 2023



**LEGEND:**

- Area of work
- CAMP Station
- Stockpile Location (soil/fill)
- Stockpile location (C&D)

2360 Bedford Avenue, Brooklyn NY

Air Monitoring Log

Date : 2024-01-22

Personnel : D. Djombalic, E. Nunez, A. Stewart & C. Evertz  
 Weather : Cloudy  
 Humidity : 69%  
 Wind Direction : E to W, 6 mph

Particulate Background (ug/m3) : 16.77  
 PID Background (ppm) : 0.0

Action Levels : Downwind perimeter of work area above background levels  
 PID (ppm) : > 5 ppm for the 15-min average  
 Dust (ug/m3) : > 150 for the 15-min average

Minute of Time	Avg. PM10 (Station1)	Avg. PM10 (Station2)	Avg. PM10 (Station3)	Avg. PM10 (Station4)	Avg. VOC(Station1)	Avg. VOC(Station2)	Avg. VOC(Station3)	Avg. VOC(Station4)	Odors	Notes Activities/ Additional Monitoring
06:45		16.606		5.891		0.0		0.0		
07:00		13.857		6.007		0.0		0.0		
07:15		8.139		4.715		0.0		0.0		
07:30	5.250	8.821	16.770	4.498	0.0	0.0	0.0	0.0		
07:45	5.780	10.239	14.426	4.536	0.0	0.0	0.0	0.0		
08:00	6.004	9.765	11.581	4.243	0.0	0.0	0.0	0.0		
08:15	5.558	9.737	8.439	4.042	0.0	0.0	0.0	0.0		
08:30	5.613	7.469	6.435	4.317	0.0	0.0	0.0	0.0		
08:45	5.758	7.927	6.202	4.036	0.0	0.0	0.0	0.0		
09:00	5.560	6.265	5.923	4.137	0.0	0.0	0.0	0.0		
09:15	4.797	6.296	6.487	4.315	0.0	0.0	0.0	0.0		
09:30	4.328	5.927	6.498	3.693	0.0	0.0	0.0	0.0		
09:45	4.355	7.757	5.326	3.821	0.0	0.0	0.0	0.0		
10:00	3.904	4.605	4.083	3.247	0.0	0.0	0.0	0.0		
10:15	4.946	7.313	4.528	3.910	0.0	0.0	0.0	0.0		
10:30	4.687	6.216	4.290	3.851	0.0	0.0	0.0	0.0		
10:45	4.312	6.409	3.716	3.513	0.0	0.0	0.0	0.0		

2360 Bedford Avenue, Brooklyn NY

Air Monitoring Log

Minute of Time	Avg. PM10 (Station1)	Avg. PM10 (Station2)	Avg. PM10 (Station3)	Avg. PM10 (Station4)	Avg. VOC(Station1)	Avg. VOC(Station2)	Avg. VOC(Station3)	Avg. VOC(Station4)	Odors	Notes Activities/ Additional Monitoring
11:00	4.884	5.916	3.893	3.7	0.0	0.0	0.0	0.0		
11:15	4.738	7.245	3.893	4.3	0.0	0.0	0.0	0.0		
11:30	5.789	7.538	3.348	4.6	0.0	0.0	0.0	0.0		
11:45	5.787	6.831	3.394	4.4	0.0	0.0	0.0	0.0		
12:00	5.218	5.263	3.431	4.4	0.0	0.0	0.0	0.0		
12:15	5.441	4.082	3.412	4.3	0.0	0.0	0.0	0.0		
12:30	4.772	5.485	3.509	4.1	0.0	0.0	0.0	0.0		
12:45	5.109	6.131	3.570	4.6	0.0	0.0	0.0	0.0		
13:00	5.735	8.909	3.918	5.3	0.0	0.0	0.0	0.0		
13:15	6.860	9.116	4.486	5.8	0.0	0.0	0.0	0.0		
13:30	6.404	7.745	4.285	5.4	0.0	0.0	0.0	0.0		
13:45	5.853	8.389	4.054	5.2	0.0	0.0	0.0	0.0		
14:00		11.018		4.5		0.0		0.0		
14:15		6.872		4.8		0.0		0.0		
14:30		5.609		4.4		0.0		0.0		