

Project	Bedford Beverly Brownfield Site	Report No.	73
BCP Site	BCP Site No. C224384	Date	1/19/2024
Location	2359 and 2360 Bedford Avenue, Brooklyn, NY	File No.	0205432
Client	Bedford Beverly Acquisitions LLC, Maman Contracting (Maman), International Concrete	Temperature	21-33°F
Contractor	Haley & Aldrich	Wind Direction	NE to SW, 7 mph
Weather	Cloudy	Personnel on Site	E. Nunez, D. Djombalic, S. Thomspson
Humidity	81%	Time on Site	6:30 am to 3:00 pm

Haley & Aldrich of New York Engineering and Geology, LLP (Haley & Aldrich) was present to document implementation of the Remedial Action Work Plan (RAWP) prepared by Haley & Aldrich currently under review by NYSDEC and the NYSDEC-approved Change of Use dated 17 August 2023 to begin support of excavation work. Site observations are summarized below.

Daily Observations:

- Contractor (International Concrete) continued support of excavation (SOE) installation along the perimeter of Lots 14 and 53.

Waste Disposal/Backfill Import Tracking:

Material Export:

- Fifty-Two (52) loads of non-hazardous fill material from grids WC-30(0-5), WC-35(0-5), WC-18(10-15).
- Soil/Fill disposal is summarized below:

	<i>Facility: Bayshore Soil Management, Keasbey, NJ (Non-Haz Soil)</i>		<i>Facility: P Park NJ LLC, Prospect Park, NJ (Non-Haz Soil)</i>		<i>Facility: Keystone Trade Center, Fairless Hills, PA (Non-Haz Soil)</i>	
<i>Today:</i>	0 Loads	0 CY	22 Loads	440 CY	30 Loads	600 CY
<i>Total:</i>	<u>292 Loads</u>	<u>5,840 CY</u>	<u>964 Loads</u>	<u>19,280 CY</u>	<u>589 Loads</u>	<u>11,780 CY</u>
	<i>Facility: Posillico Materials Permitted Wash Plant, LLC, Farmingdale, NY (Non-Haz Soil)</i>		<i>Facility: Republic Environmental Systems, LLC, Hatfield PA (Haz waste)</i>		<i>Facility: Conestoga Republic Environmental Systems, LLC, Prospect Park, NJ (Non-Haz Soil)</i>	
<i>Today:</i>	0 Loads	0 CY	0 Loads	0 CY	0 Loads	0 CY
<i>Total:</i>	<u>416 Loads</u>	<u>8,320 CY</u>	<u>5 Loads</u>	<u>100 CY</u>	<u>44 Loads</u>	<u>880 CY</u>
Sitewide Total						
<i>Today:</i>	52 Loads	1,040 CY				
<i>Total:</i>	<u>2,401 Loads</u>	48,020 CY				

*Note, 1 truck estimated at 20 cubic yards. Final tonnages will be present in the Final Engineering Report (FER)

- Asphalt disposal is summarized below:

	<i>Facility: Flushing Asphalt Recycling, Flushing NY (Asphalt)</i>		<i>Facility: Mount Materials, Fairless Hills, PA (Asphalt)</i>		<i>Totals:</i>	
<i>Today:</i>	0 Loads	0 CY	0 Loads	0 CY	0 Loads	0 CY
<i>Total:</i>	<u>117 Loads</u>	<u>2,340 CY</u>	<u>38 Loads</u>	<u>760 CY</u>	<u>155 Loads</u>	<u>3,100 CY</u>

*Note, 1 truck estimated at 20 cubic yards. Final tonnages will be present in the Final Engineering Report (FER)

- C&D disposal is summarized below:

	<i>Facility: Mount Materials, Fairless Hills, PA (Non-Haz Concrete)</i>		<i>Totals:</i>	
<i>Today:</i>	1 Loads	20 CY	1 Loads	20 CY
<i>Total:</i>	<u>87 Loads</u>	<u>1,740 CY</u>	<u>87 Loads</u>	<u>1,740 CY</u>

*Note, 1 truck estimated at 20 cubic yards. Final tonnages will be present in the Final Engineering Report (FER)

Material Import:

- Material import is summarized below:

	<i>Facility: Mount Hope Quarry, Wharton, NJ (ASTM #57)</i>		<i>Facility: Mount Hope Quarry, Wharton, NJ (ASTM #3)</i>		<i>Totals:</i>	
<i>Today:</i>	0 Loads	0 CY	0 load	0 CY	0 Loads	0 CY
<i>Total:</i>	<u>5 Loads</u>	<u>100 CY</u>	<u>18 loads</u>	<u>340 CY</u>	<u>23 Loads</u>	<u>441 CY</u>

*Note, 1 truck estimated at 20 cubic yards. Final tonnages will be present in the Final Engineering Report (FER)

Samples Collected:

- No samples collected.

CAMP Activities:

- Air monitoring during ground-intrusive activities was performed at four locations during ground intrusive work from 7:15 am to 10:15 am. No 15-minute average concentration of volatiles organic compounds (VOCs) or particulate 15-minute average concentration of matter smaller than 10 microns in diameter (PM10) exceeded the action levels. No visible dust was observed leaving the site perimeter.
- Due to rain/snow, visual and olfactory monitoring was conducted from 10:15 am to 3:00 pm. No visible dust was observed leave the site perimeter.

Activities Planned for Coming Week:

- Contractor (International Concrete) will continue stockpiling soil on the perimeter of Lot 14 for disposal.
- Contractor (International Concrete) will continue stockpiling soil on the perimeter of Lot 53 for disposal.
- Contractor (International Concrete) will continue installing H piles as part of SOE installation on the perimeter of the site.
- Contractor (International Concrete) will continue transportation and disposal of soil/fill to an approved facility.

Site Photographs:



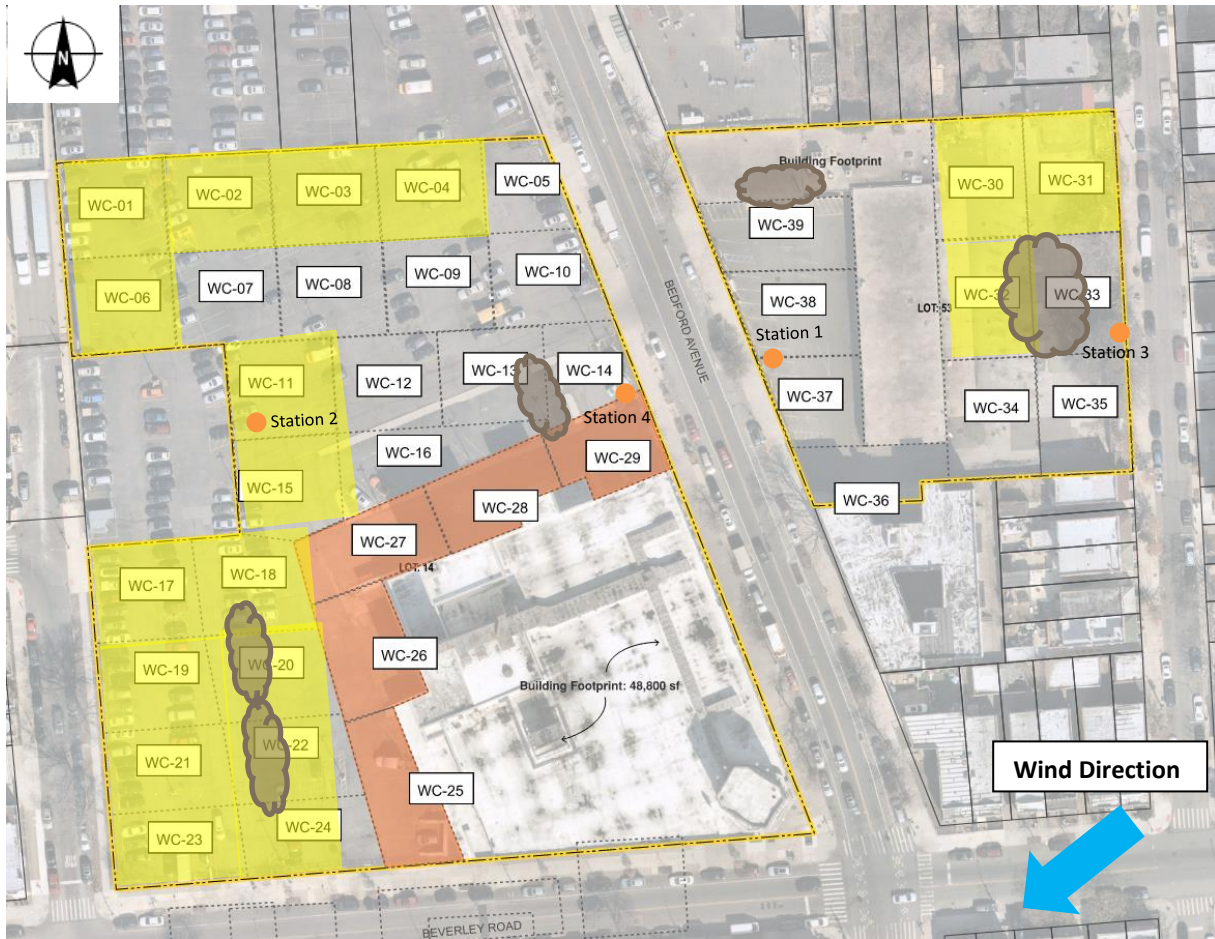
Photo 1: View of soil disposal in Lot 53, facing east.



Photo 2: View of soil disposal in Lot 14, facing North.

Site Plan:

Reference: Waste Characterization Letter Figure 3 Grid Location Map, prepared by Haley & Aldrich, dated October 2023



LEGEND:

- Area of work
- CAMP Station
- Stockpile Location (soil/fill)
- Stockpile location (C&D)

2360 Bedford Avenue, Brooklyn NY

Air Monitoring Log

Date : 2024-01-19

Personnel : D. Djombalic, E. Nunez & A. Stewart

Weather : Cloudy

Humidity : 81%

Wind Direction : NE to SW, 7 mph

Particulate Background (ug/m3) : 8.856

PID Background (ppm) : 0.0

Action Levels : Downwind perimeter of work area above background levels

PID (ppm) : > 5 ppm for the 15-min average

Dust (ug/m3) : > 150 for the 15-min average

Minute of Time	Avg. PM10 (Station1)	Avg. PM10 (Station2)	Avg. PM10 (Station3)	Avg. PM10 (Station4)	Avg. VOC(Station1)	Avg. VOC(Station2)	Avg. VOC(Station3)	Avg. VOC(Station4)	Odors	Notes Activities/ Additional Monitoring
07:15	13.160		8.856	11.835	0.0		0.0	0.0		
07:30	14.281	12.660	6.835	10.763	0.0	0.0	0.0	0.0		
07:45	12.452	12.476	7.143	9.148	0.0	0.0	0.0	0.0		
08:00	12.081	11.522	7.645	8.687	0.0	0.0	0.0	0.0		
08:15	14.554	11.247	7.149	8.696	0.0	0.0	0.0	0.0		
08:30	13.090	11.177	7.078	8.517	0.0	0.0	0.0	0.0		
08:45	12.944	10.560	7.432	8.903	0.0	0.0	0.0	0.0		
09:00	11.986	10.549	7.033	8.145	0.0	0.0	0.0	0.0		
09:15	10.588	7.150	5.693	8.323	0.0	0.0	0.0	0.0		
09:30	12.122	8.464	5.572	8.075	0.0	0.0	0.0	0.0		
09:45	11.335	8.492	5.624	8.472	0.0	0.0	0.0	0.0		
10:00	11.156	8.649	5.702	8.556	0.0	0.0	0.0	0.0		
10:15	9.094	7.912	5.518	8.899	0.0	0.0	0.0	0.0		