

<b>Project</b>	Bedford Beverly Brownfield Site	<b>Report No.</b>	56
<b>BCP Site</b>	BCP Site No. C224384	<b>Date</b>	12/26/2023
<b>Location</b>	2359 and 2360 Bedford Avenue, Brooklyn, NY	<b>File No.</b>	0205432
<b>Client</b>	Bedford Beverly Acquisitions LLC, Maman Contracting (Maman), International Concrete	<b>Temperature</b>	42-48°F
<b>Contractor</b>	Haley & Aldrich	<b>Wind Direction</b>	NNE to SSW, 4 mph
<b>Weather</b>	Cloudy	<b>Personnel on Site</b>	E. Nunez, C. Evertz, & D. Djombalic
<b>Humidity</b>	88%	<b>Time on Site</b>	6:30 am to 2:00 pm

Haley & Aldrich of New York (Haley & Aldrich) was present to document implementation of the Remedial Action Work Plan (RAWP) prepared by Haley & Aldrich currently under review by NYSDEC and the NYSDEC-approved Change of Use dated 17 August 2023 to begin support of excavation work. Site observations are summarized below.

**Daily Observations:**

- Contractor (International Concrete) continued support of excavation (SOE) installation along the perimeter of Lots 14 and 53.
- Contractor (International Concrete) continued loading asphalt and C&D for transport and disposal off-site.

**Waste Disposal/Backfill Import Tracking:**

**Material Export:**

- Soil/Fill disposal is summarized below:

	<i>Facility: Bayshore Soil Management, Keasbey, NJ (Non-Haz Soil)</i>		<i>Facility: P Park NJ LLC, Prospect Park, NJ (Non-Haz Soil)</i>		<i>Facility: Keystone Trade Center, Fairless Hills, PA (Non-Haz Soil)</i>		<i>Facility: Posillico Materials Permitted Wash Plant, LLC, Farmingdale, NY (Non-Haz Soil)</i>		<i>Totals:</i>	
<i>Today:</i>	0 Loads	0 CY	0 Loads	0 CY	0 Loads	0 CY	0 Loads	0 CY	0 Loads	0 CY
<i>Total:</i>	<u>212 Loads</u>	<u>4,240 CY</u>	<u>727 Loads</u>	<u>14,540 CY</u>	<u>262 Loads</u>	<u>5,240 CY</u>	<u>97 Loads</u>	<u>1,940 CY</u>	<u>1,298 Loads</u>	<u>25,960 CY</u>

\*Note, 1 truck estimated at 20 cubic yards. Final tonnages will be present in the Final Engineering Report (FER)

- Asphalt disposal is summarized below:

	<i>Facility: Flushing Asphalt Recycling, Flushing NY (Asphalt)</i>		<i>Facility: Mount Materials, Fairless Hills, PA (Asphalt)</i>		<i>Totals:</i>	
<i>Today:</i>	0 Loads	0 CY	12 Loads	240 CY	12 Loads	240 CY
<i>Total:</i>	<u>117 Loads</u>	<u>2,340 CY</u>	<u>21 Loads</u>	<u>420 CY</u>	<u>138 Loads</u>	<u>2,760 CY</u>

\*Note, 1 truck estimated at 20 cubic yards. Final tonnages will be present in the Final Engineering Report (FER)

- C&D disposal is summarized below:

	<i>Facility: Mount Materials, Fairless Hills, PA (Non-Haz Concrete)</i>		<i>Totals:</i>	
<i>Today:</i>	6 Loads	120 CY	6 Loads	120 CY
<i>Total:</i>	<u>83 Loads</u>	<u>1,660 CY</u>	<u>83 Loads</u>	<u>1,660 CY</u>

\*Note, 1 truck estimated at 20 cubic yards. Final tonnages will be present in the Final Engineering Report (FER)

**Material Import:**

- Material import is summarized below:

	<i>Facility: Mount Hope Quarry, Wharton, NJ (ASTM #57)</i>		<i>Facility: Mount Hope Quarry, Wharton, NJ (ASTM #3)</i>		<i>Totals:</i>	
<i>Today:</i>	0 Loads	0 CY	0 loads	0 CY	0 Loads	0 CY
<i>Total:</i>	<u>5 Loads</u>	<u>100 CY</u>	<u>15 loads</u>	<u>300 CY</u>	<u>20 Loads</u>	<u>400 CY</u>

\*Note, 1 truck estimated at 20 cubic yards. Final tonnages will be present in the Final Engineering Report (FER)

**Samples Collected:**

- No samples taken.

**CAMP Activities:**

- Air monitoring during ground-intrusive activities was performed at four locations during ground intrusive work from 6:30 am to 1:30 pm. No 15-minute average concentration of volatiles organic compounds (VOCs) or particulate 15-minute average concentration of matter smaller than 10 microns in diameter (PM10) exceeded the action levels. No visible dust was observed leaving the site perimeter.

**Activities Planned for Coming Week:**

- Contractor (International Concrete) will continue stockpiling soil on the perimeter of Lot 14 for disposal.
- Contractor (International Concrete) will begin stockpiling soil on the perimeter of Lot 53 for disposal.
- Contractor (International Concrete) will continue installing H piles as part of SOE installation on the perimeter of the site.
- Contractor (International Concrete) will continue transportation and disposal of soil/fill to an approved facility.

**Site Photographs:**



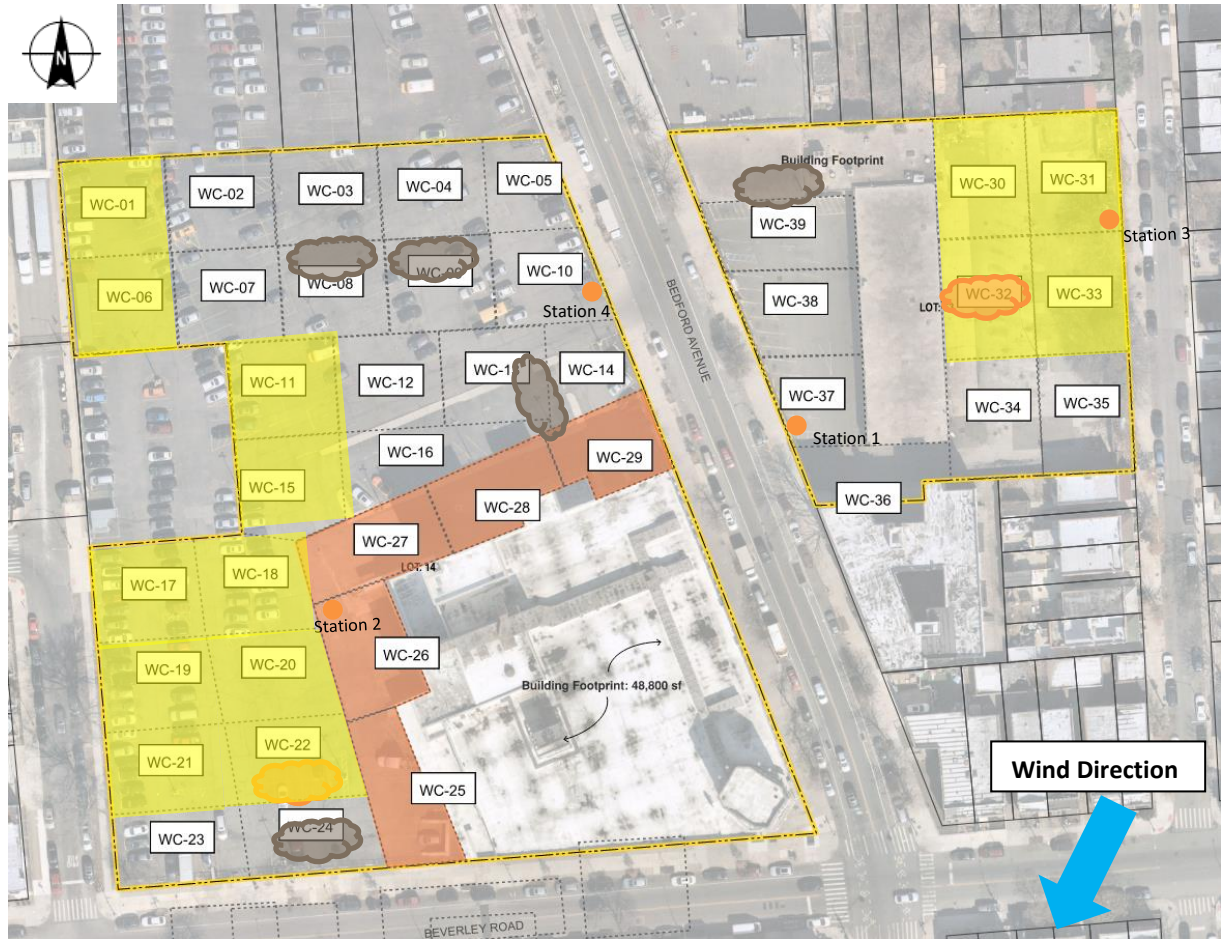
*Photo 1: View of contractor loading asphalt in Lot 53, facing east.*



*Photo 2: View of contractor loading C&D for off-site disposal in Lot 53, facing east.*

**Site Plan:**

Reference: Waste Characterization Letter Figure 3 Grid Location Map, prepared by Haley & Aldrich, dated October 2023



**LEGEND:**

- Area of work
- CAMP Station
- Stockpile Location (soil/fill)
- Stockpile location (C&D)

2360 Bedford Avenue, Brooklyn NY

Air Monitoring Log

Date : 2023-12-26

Personnel : D. Djombalic, E. Nunez & C. Evertz

Weather : Cloudy

Humidity : 88%

Wind Direction : NNE to SSW, 4 mph

Particulate Background (ug/m3) : 33.773

PID Background (ppm) : 0.0

Action Levels : Downwind perimeter of work area above background levels

PID (ppm) : > 5 ppm for the 15-min average

Dust (ug/m3) : > 150 for the 15-min average

Minute of Time	Avg. PM10 (Station1)	Avg. PM10 (Station2)	Avg. PM10 (Station3)	Avg. PM10 (Station4)	Avg. VOC(Station1)	Avg. VOC(Station2)	Avg. VOC(Station3)	Avg. VOC(Station4)	Odors	Notes Activities/ Additional Monitoring
06:30	51.254	38.785		34.945	0.0	0.0		0.0		
06:45	31.879	31.241	33.773	26.035	0.0	0.0	0.0	0.0		
07:00	27.684	32.499	25.970	24.796	0.0	0.0	0.0	0.0		
07:15	32.718	36.975	29.679	28.249	0.0	0.0	0.0	0.0		
07:30	30.102	32.593	24.218	25.516	0.0	0.0	0.0	0.0		
07:45	30.995	44.855	24.605	26.219	0.0	0.0	0.0	0.0		
08:00	28.315	34.459	24.373	25.412	0.0	0.0	0.0	0.0		
08:15	29.442	41.076	26.449	26.470	0.0	0.0	0.0	0.0		
08:30	28.727	30.706	25.517	26.301	0.0	0.0	0.0	0.0		
08:45	26.847	28.198	25.317	24.268	0.0	0.0	0.0	0.0		
09:00	23.683	24.717	20.959	21.269	0.0	0.0	0.0	0.0		
09:15	22.102	24.435	18.823	19.875	0.0	0.0	0.0	0.0		
09:30	21.901	24.413	18.609	19.414	0.0	0.0	0.0	0.0		
09:45	21.959	22.716	18.660	19.374	0.0	0.0	0.0	0.0		
10:00	22.249	23.663	19.272	19.874	0.0	0.0	0.0	0.0		
10:15	23.064	23.768	20.276	20.778	0.0	0.0	0.0	0.0		
10:30	21.694	24.145	18.462	18.535	0.0	0.0	0.0	0.0		
10:45	18.765	20.932	15.547	16.132	0.0	0.0	0.0	0.0		

2360 Bedford Avenue, Brooklyn NY

Air Monitoring Log

Minute of Time	Avg. PM10 (Station1)	Avg. PM10 (Station2)	Avg. PM10 (Station3)	Avg. PM10 (Station4)	Avg. VOC(Station1)	Avg. VOC(Station2)	Avg. VOC(Station3)	Avg. VOC(Station4)	Odors	Notes Activities/ Additional Monitoring
11:00	15.887	16.406	14.556	13.6	0.0	0.0	0.0	0.0		
11:15	15.922	15.593	13.743	14.3	0.0	0.0	0.0	0.0		
11:30	20.774	21.707	16.969	17.7	0.0	0.0	0.0	0.0		
11:45	21.689	24.205	19.665	19.8	0.0	0.0	0.0	0.0		
12:00	23.418	22.974	21.741	20.9	0.0	0.0	0.0	0.0		
12:15		21.706		19.9		0.0		0.0		
12:30		22.429		20.4		0.0		0.0		
12:45		21.053		18.9		0.0		0.0		
13:00		20.891		18.6		0.0		0.0		
13:15		21.296		18.9		0.0		0.0		
13:30		22.630		21.1		0.0		0.0		