

Project	Bedford Beverly Brownfield Site	Report No.	51
BCP Site	BCP Site No. C224384	Date	12/18/2023
Location	2359 and 2360 Bedford Avenue, Brooklyn, NY	File No.	0205432
Client	Bedford Beverly Acquisitions LLC, Maman Contracting (Maman), International Concrete	Temperature	40-60 °F
Contractor	Haley & Aldrich	Wind Direction	S to N, 16 mph
Weather	Rainy	Personnel on Site	A. Stewart, E. Nunez, & D. Djombalic
Humidity	97%	Time on Site	6:30 am to 2:40 pm

Haley & Aldrich of New York (Haley & Aldrich) was present to document implementation of the Remedial Action Work Plan (RAWP) prepared by Haley & Aldrich currently under review by NYSDEC and the NYSDEC-approved Change of Use dated 17 August 2023 to begin support of excavation work. Site observations are summarized below.

Daily Observations:

- Contractor (International Concrete) continued support of excavation (SOE) installation along the perimeter of Lots 14 and 53.
- Contractor (International Concrete) continued loading soil for transport and disposal off-site.

Waste Disposal/Backfill Import Tracking:

Material Export:

- Seventy-four (74) loads of non-hazardous fill material from grids WC-15 (10-15'), WC-11 (10-15'), & WC-19 (10-15').
- Soil/Fill disposal is summarized below:

	<i>Facility: Bayshore Soil Management, Keasbey, NJ (Non-Haz Soil)</i>		<i>Facility: P Park NJ LLC, Prospect Park, NJ (Non-Haz Soil)</i>		<i>Facility: Keystone Trade Center, Fairless Hills, PA (Non-Haz Soil)</i>		<i>Facility: Posillico Materials Permitted Wash Plant, LLC, Farmingdale, NY (Non-Haz Soil)</i>		<i>Totals:</i>	
<i>Today:</i>	0 Loads	0 CY	74 Loads	1,480 CY	0 Loads	0 CY	0 Loads	0 CY	74 Loads	1,480 CY
<i>Total:</i>	<u>186 Loads</u>	<u>3,720 CY</u>	<u>643 Loads</u>	<u>12,860 CY</u>	<u>229 Loads</u>	<u>4,580 CY</u>	<u>97 Loads</u>	<u>1,940 CY</u>	<u>1,155 Loads</u>	<u>23,100 CY</u>

*Note, 1 truck estimated at 20 cubic yards. Final tonnages will be present in the Final Engineering Report (FER)

- Asphalt disposal is summarized below:

	<i>Facility: Flushing Asphalt Recycling, Flushing NY (Asphalt)</i>		<i>Facility: Mount Materials, Fairless Hills, PA (Asphalt)</i>		<i>Totals:</i>	
<i>Today:</i>	0 Loads	0 CY	0 Loads	0 CY	0 Loads	0 CY
<i>Total:</i>	<u>117 Loads</u>	<u>2,340 CY</u>	<u>9 Loads</u>	<u>180 CY</u>	<u>126 Loads</u>	<u>2,520 CY</u>

*Note, 1 truck estimated at 20 cubic yards. Final tonnages will be present in the Final Engineering Report (FER)

- C&D disposal is summarized below:

	<i>Facility: Mount Materials, Fairless Hills, PA (Non-Haz Concrete)</i>		<i>Totals:</i>	
<i>Today:</i>	0 Loads	0 CY	0 Loads	0 CY
<i>Total:</i>	<u>61 Loads</u>	<u>1,220 CY</u>	<u>61 Loads</u>	<u>1,220 CY</u>

*Note, 1 truck estimated at 20 cubic yards. Final tonnages will be present in the Final Engineering Report (FER)

Material Import:

- Material import is summarized below:

	<i>Facility: Mount Hope Quarry, Wharton, NJ (ASTM #57)</i>		<i>Facility: Mount Hope Quarry, Wharton, NJ (ASTM #3)</i>		<i>Totals:</i>	
<i>Today:</i>	0 Loads	0 CY	1 load	20 CY	1 Load	20 CY
<i>Total:</i>	<u>5 Loads</u>	<u>100 CY</u>	<u>12 loads</u>	<u>240 CY</u>	<u>17 Loads</u>	<u>340 CY</u>

*Note, 1 truck estimated at 20 cubic yards. Final tonnages will be present in the Final Engineering Report (FER)

Samples Collected:

- No samples were collected.

CAMP Activities:

- Due to rainy conditions, visual and olfactory monitoring was conducted throughout the day. No visible dust was observed leaving the site perimeter.

Activities Planned for Coming Week:

- Contractor (International Concrete) will continue stockpiling soil on the perimeter of Lot 14 for disposal.
- Contractor (International Concrete) will begin stockpiling soil on the perimeter of Lot 53 for disposal.
- Contractor (International Concrete) will continue installing H piles as part of SOE installation on the perimeter of the site.
- Contractor (International Concrete) will continue transportation and disposal of soil/fill to an approved facility.

Site Photographs:



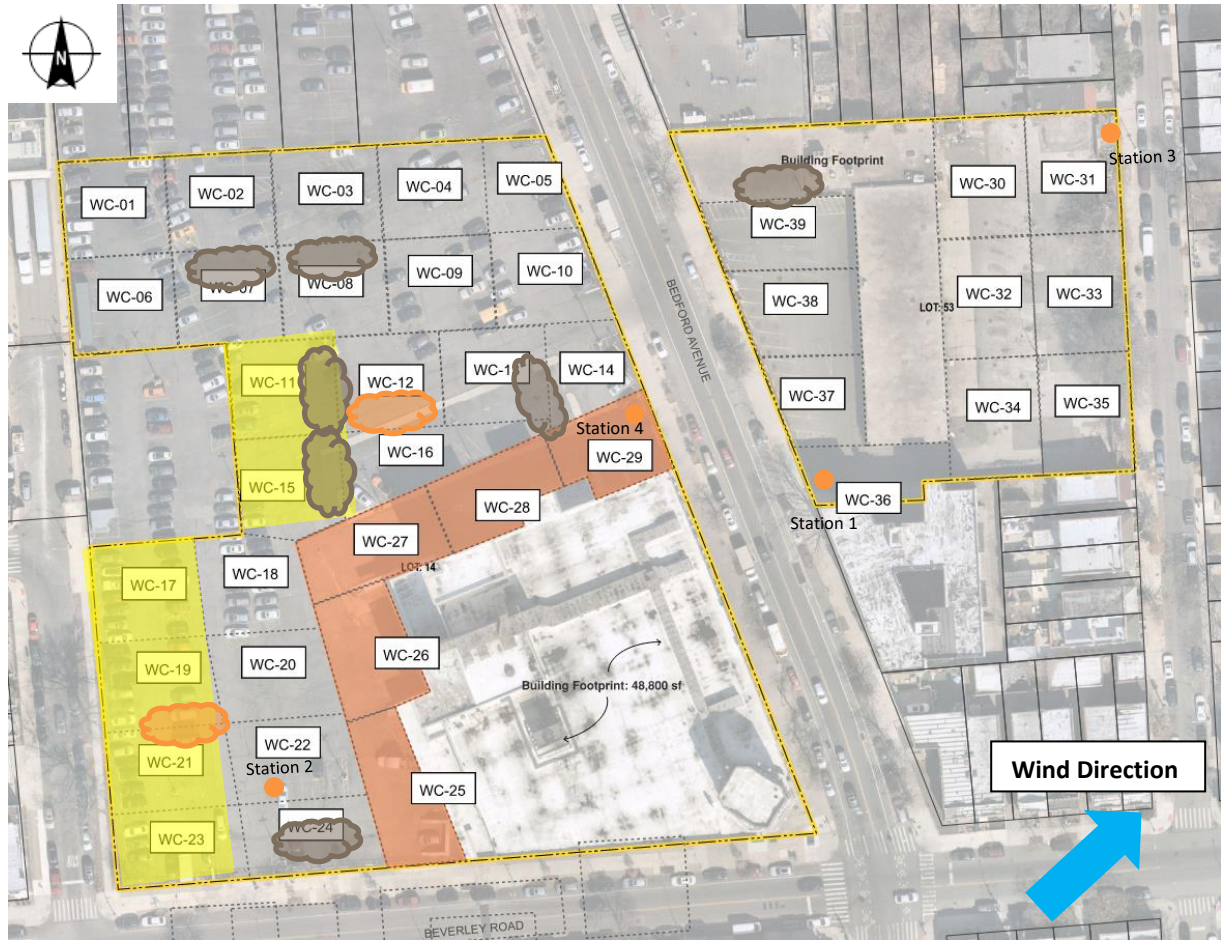
Photo 1: View of contractor loading soil for off-site disposal on Lot 14, facing northeast.



Photo 2: View of contractor loading soil for off-site disposal on Lot 14, facing south-southwest.

Site Plan:

Reference: Waste Characterization Letter Figure 3 Grid Location Map, prepared by Haley & Aldrich, dated October 2023



LEGEND:

- Area of work
- CAMP Station
- Stockpile Location (soil/fill)
- Stockpile location (C&D)