

<b>Project</b>	Bedford Beverly Brownfield Site	<b>Report No.</b>	32
<b>BCP Site</b>	BCP Site No. C224384	<b>Date</b>	11/17/2023
<b>Location</b>	2359 and 2360 Bedford Avenue, Brooklyn, NY	<b>File No.</b>	0205432
<b>Client</b>	Bedford Beverly Acquisitions LLC, Star Demolition (Star), Maman Contracting (Maman), International Concrete	<b>Temperature</b>	48-64 °F
<b>Contractor</b>	Haley & Aldrich	<b>Wind Direction</b>	SW to NE, 6 mph
<b>Weather</b>	Mostly Cloudy	<b>Personnel on Site</b>	D. Djombalic, N. Mooney & E. Nunez
<b>Humidity</b>	85%	<b>Time on Site</b>	6:45am to 3:30pm

Haley & Aldrich of New York (Haley & Aldrich) was present to document implementation of the Remedial Action Work Plan (RAWP) prepared by Haley & Aldrich currently under review by NYSDEC and the NYSDEC-approved Change of Use dated 17 August 2023 to begin support of excavation work. Site observations are summarized below.

**Daily Observations:**

- Contractor (International Concrete) continued support of excavation (SOE) prep along the perimeter of Lot 14 and stockpiled soil in preparation for disposal.
- Contractor (International Concrete) continued loading C&D material for transport and disposal off-site.
- Contractor (International Concrete) continued loading soil for transport and disposal off-site.
- Contractor (International Concrete) encountered one, approximately 550-gallon underground storage tank (UST) (i.e., UST-05) in the western portion of grid WC-12 during excavation. No visible evidence of contamination was observed in the vicinity of the UST.

**Waste Disposal/Backfill Import Tracking:**

**Material Export:**

- Seventy (70) loads of non-hazardous fill material from grids WC-05\_0-5, WC-10\_0-5, WC-11\_0-5, and WC-12\_0-5 were transported offsite.
- Soil/Fill disposal is summarized below:

	<i>Facility: Bayshore Soil Management, Keasbey, NJ (Non-Haz Soil/Fill)</i>		<i>Totals:</i>	
<i>Today:</i>	70 Loads	1,400 CY	70 Loads	1,400 CY
<i>Total:</i>	<u>118 Loads</u>	<u>2,360 CY</u>	<u>118 Loads</u>	<u>2,360 CY</u>

\*Note, 1 truck estimated at 20 cubic yards. Final tonnages will be present in the Final Engineering Report (FER)

## DAILY FIELD REPORT

- Asphalt disposal is summarized below:

	<i>Facility: Flushing Asphalt Recycling, Flushing NY (Asphalt)</i>		<i>Facility: Mount Materials, Fairless Hills, PA (Asphalt)</i>		<i>Totals:</i>	
<i>Today:</i>	0 Loads	0 CY	1 Loads	20 CY	1 Loads	20 CY
<i>Total:</i>	<u>117 Loads</u>	<u>2340 CY</u>	<u>9 Loads</u>	<u>180 CY</u>	<u>126 Loads</u>	<u>2520 CY</u>

\*Note, 1 truck estimated at 20 cubic yards. Final tonnages will be present in the Final Engineering Report (FER)

- Nine (9) loads of C&D were transported off-site to Mount Materials located in Fairless Hills, PA.
- C&D disposal is summarized below:

	<i>Facility: Mount Materials, Fairless Hills, PA (Non-Haz Concrete)</i>		<i>Totals:</i>	
<i>Today:</i>	8 Loads	160 CY	8 Loads	160 CY
<i>Total:</i>	<u>51 Loads</u>	<u>1,020 CY</u>	<u>51 Loads</u>	<u>1,020 CY</u>

\*Note, 1 truck estimated at 20 cubic yards. Final tonnages will be present in the Final Engineering Report (FER)

### Material Import:

- Material import is summarized below:

	<i>Facility: Mount Hope Quarry, Wharton, NJ (ASTM #57)</i>		<i>Totals:</i>	
<i>Today:</i>	0 Loads	0 CY	0 Loads	0 CY
<i>Total:</i>	<u>3 Loads</u>	<u>60 CY</u>	<u>3 Loads</u>	<u>60 CY</u>

\*Note, 1 truck estimated at 20 cubic yards. Final tonnages will be present in the Final Engineering Report (FER)

### Samples Collected:

- A soil sample was collected from the base of UST-05 excavation at approximately 15 feet below grade surface (ft bgs). The sample was analyzed for CP-51 VOCs, SVOCs, and Total Metals.
- Documentation soil samples were collected in the following locations: EP-133, EP-134, EP-135, EP-136, EP-137, EP-138, EP-139, and EP-140.
- QA/QC samples including two duplicates, two MS/MSD samples, two field blanks, one equipment blank, and one trip blank were collected in accordance with the RAWP.
- The soil samples were relinquished to Eurofins Scientific of Edison, New Jersey (a NYSDOH ELAP certified laboratory) under standard chain of custody procedures.

**CAMP Activities:**

- Air monitoring during ground-intrusive activities was performed at two locations during ground intrusive work from 7:00 am to 3:00pm. No 15-minute average concentration of volatiles organic compounds (VOCs) or particulate 15-minute average concentration of matter smaller than 10 microns in diameter (PM10) exceeded the action levels. No visible dust was observed leaving the site perimeter.

**Activities Planned for Coming Week:**

- Contractor (Star) will continue demolition of the former building on Lot 53.
- Contractor (International Concrete) will continue stockpiling soil on the perimeter of Lot 14 for disposal.
- Contractor (International Concrete) will continue installing H piles as part of SOE installation on the perimeter of the site.
- Contractor (International Concrete) will continue transportation and disposal of soil/fill to an approved facility.

**Site Photographs:**



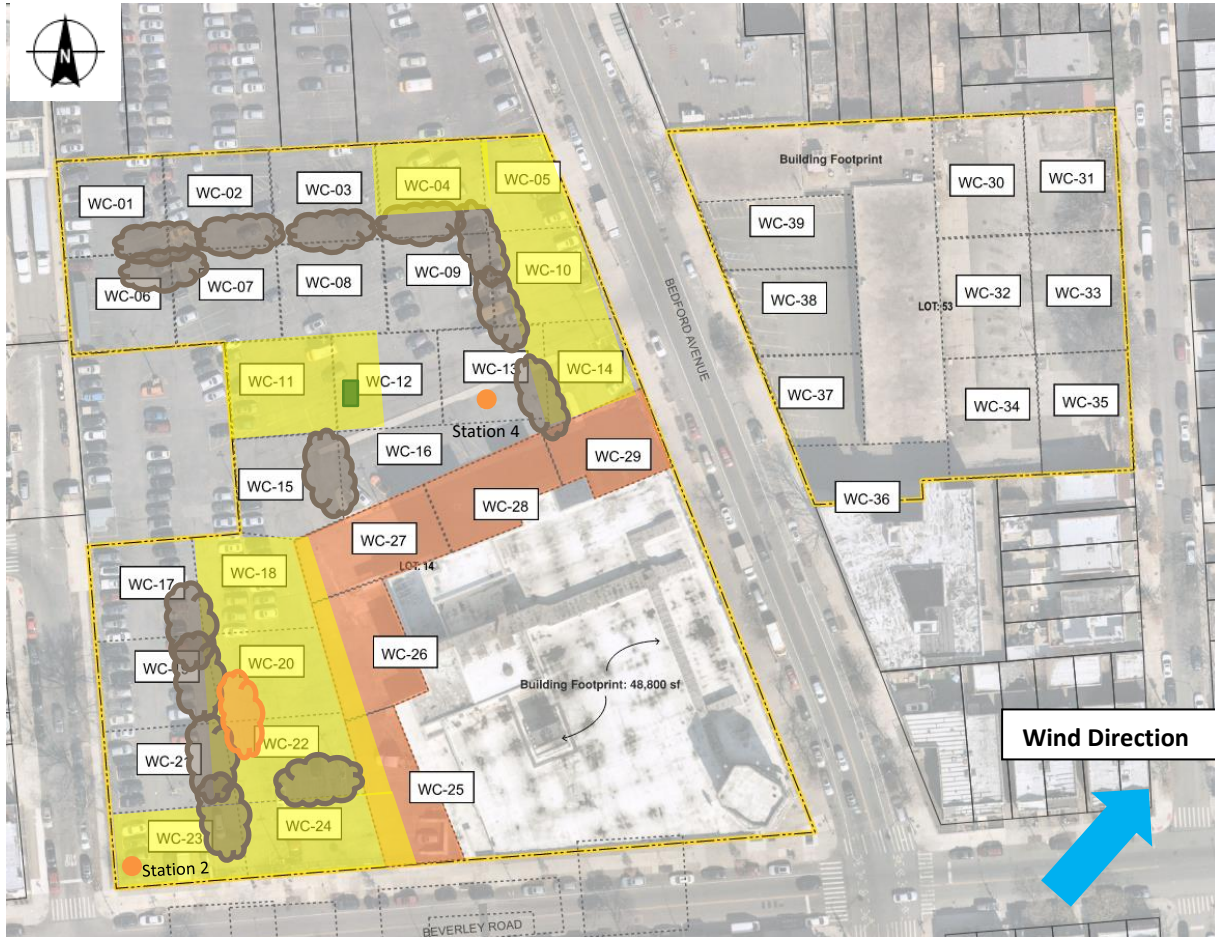
*Photo 1: View of contractor loading soil in Lot 14, facing north.*



*Photo 2: View of contractor loading soil in Lot 14, facing northeast.*

**Site Plan:**

Reference: Waste Characterization Letter Figure 3 Grid Location Map, prepared by Haley & Aldrich, dated October 2023



**LEGEND:**

- Area of work
- CAMP Station
- Stockpile Location (soil/fill)
- Stockpile location (C&D)
- UST Location

2360 Bedford Avenue, Brooklyn NY

Air Monitoring Log

Date : 2023-11-17

Personnel : D. Djombalic, N. Mooney & Eddy Nunez

Weather : Mostly Cloudy

Humidity : 85%

Wind Direction : SW to NE, 6 mph

Particulate Background (ug/m3) : 11.275

PID Background (ppm) : 0.0

Action Levels : Downwind perimeter of work area above background levels

PID (ppm) : > 5 ppm for the 15-min average

Dust (ug/m3) : > 150 for the 15-min average

Minute of Time	Avg. PM10 (Station1)	Avg. PM10 (Station2)	Avg. PM10 (Station3)	Avg. PM10 (Station4)	Avg. VOC(Station1)	Avg. VOC(Station2)	Avg. VOC(Station3)	Avg. VOC(Station4)	Odors	Notes Activities/ Additional Monitoring
07:00		11.275		10.079		0.0		0.0		
07:15		7.908		8.212		0.0		0.0		
07:30		7.328		8.100		0.0		0.0		
07:45		7.658		6.713		0.0		0.0		
08:00		13.410		9.033		0.0		0.0		
08:15		13.324		6.188		0.0		0.0		
08:30		11.190		5.801		0.0		0.0		
08:45		9.120		5.563		0.0		0.0		
09:00		9.070		4.448		0.0		0.0		
09:15		9.512		3.934		0.0		0.0		
09:30		8.500		4.906		0.0		0.0		
09:45		7.419		5.097		0.0		0.0		
10:00		7.077		4.876		0.0		0.0		
10:15		6.147		3.893		0.0		0.0		
10:30		6.476		5.288		0.0		0.0		
10:45		4.921		4.122		0.0		0.0		

2360 Bedford Avenue, Brooklyn NY

Air Monitoring Log

Minute of Time	Avg. PM10 (Station1)	Avg. PM10 (Station2)	Avg. PM10 (Station3)	Avg. PM10 (Station4)	Avg. VOC(Station1)	Avg. VOC(Station2)	Avg. VOC(Station3)	Avg. VOC(Station4)	Odors	Notes Activities/ Additional Monitoring
11:00		7.143		7.5		0.0		0.0		
11:15		5.084		5.1		0.0		0.0		
11:30		6.227		8.2		0.0		0.0		
11:45		5.379		6.2		0.0		0.0		
12:00		5.793		8.0		0.0		0.0		
12:15		5.098		6.1		0.0		0.0		
12:30		4.438		7.0		0.0		0.0		
12:45		4.934		4.8		0.0		0.0		
13:00		5.861		5.7		0.0		0.0		
13:15		5.352		5.0		0.0		0.0		
13:30		6.143		6.2		0.0		0.0		
13:45		5.188		7.4		0.0		0.0		
14:00		8.139		6.1		0.0		0.0		
14:15		6.954		7.6		0.0		0.0		
14:30		6.023		4.1		0.0		0.0		
14:45		6.491		5.3		0.0		0.0		
15:00				4.5				0.0		