

<b>Project</b>	Bedford Beverly Brownfield Site	<b>Report No.</b>	28
<b>BCP Site</b>	BCP Site No. C224384	<b>Date</b>	11/13/2023
<b>Location</b>	2359 and 2360 Bedford Avenue, Brooklyn, NY	<b>File No.</b>	0205432
<b>Client</b>	Bedford Beverly Acquisitions LLC, Star Demolition (Star), Maman Contracting (Maman), International Concrete	<b>Temperature</b>	32-49 °F
<b>Contractor</b>	Haley & Aldrich	<b>Wind Direction</b>	N to S, 4 mph
<b>Weather</b>	Sunny	<b>Personnel on Site</b>	N. Mooney & E. Nunez
<b>Humidity</b>	76%	<b>Time on Site</b>	6:50am to 3:30pm

Haley & Aldrich of New York (Haley & Aldrich) was present to document implementation of the Remedial Action Work Plan (RAWP) prepared by Haley & Aldrich currently under review by NYSDEC and the NYSDEC-approved Change of Use dated 17 August 2023 to begin support of excavation work. Site observations are summarized below.

**Daily Observations:**

- Contractor (International Concrete) continued support of excavation (SOE) prep along the perimeter of Lot 14 and stockpiled soil in preparation for disposal.
- Contractor (Star) continued demolition of the former building on Lot 53 and stockpiled demolition debris for disposal.
- Contractor (International Concrete) loaded tri-axle trucks with C&D for off-site transport and disposal.

**Waste Disposal/Backfill Import Tracking:**

**Material Export:**

- Three (3) loads of asphalt were transported off-site to Mount Materials located in Fairless Hills, PA.
- Soil disposal is summarized below:

	<i>Facility: Flushing Asphalt Recycling, Flushing NY (Asphalt)</i>		<i>Facility: Mount Materials, Fairless Hills, PA (Asphalt)</i>		<i>Totals:</i>	
<i>Today:</i>	0 Loads	0 CY	3 Loads	60 CY	3 Loads	60 CY
<i>Total:</i>	<u>117 Loads</u>	<u>2340 CY</u>	<u>8 Loads</u>	<u>160 CY</u>	<u>125 Loads</u>	<u>2500 CY</u>

- Four (4) loads of C&D were transported off-site to Mount Materials located in Fairless Hills, PA.
- C&D disposal is summarized below:

	<i>Facility: Mount Materials, Fairless Hills, PA (Non-Haz Concrete)</i>		<i>Totals:</i>	
<i>Today:</i>	4 Loads	80 CY	4 Loads	80 CY
<i>Total:</i>	<u>34 Loads</u>	<u>680 CY</u>	<u>34 Loads</u>	<u>680 CY</u>

\*Note, 1 truck estimated at 20 cubic yards. Final tonnages will be present in the Final Engineering Report (FER)

**Material Import:**

- No material was imported to the Site.

**Samples Collected:**

- No samples were collected.

**CAMP Activities:**

- Air monitoring during ground-intrusive activities was performed at four locations during ground intrusive work from 6:45 am to 3:15 pm. No 15-minute average concentration of volatiles organic compounds (VOCs) or particulate 15-minute average concentration of matter smaller than 10 microns in diameter (PM10) exceeded the action levels. No visible dust was observed leaving the site perimeter.

**Activities Planned for Coming Week:**

- Contractor (Star) will continue demolition of the former building on Lot 53.
- Contractor (International Concrete) will continue stockpiling soil on the perimeter of Lot 14 for disposal.
- Contractor (International Concrete) will continue installing H piles as part of SOE installation on the perimeter of the site.

**Site Photographs:**



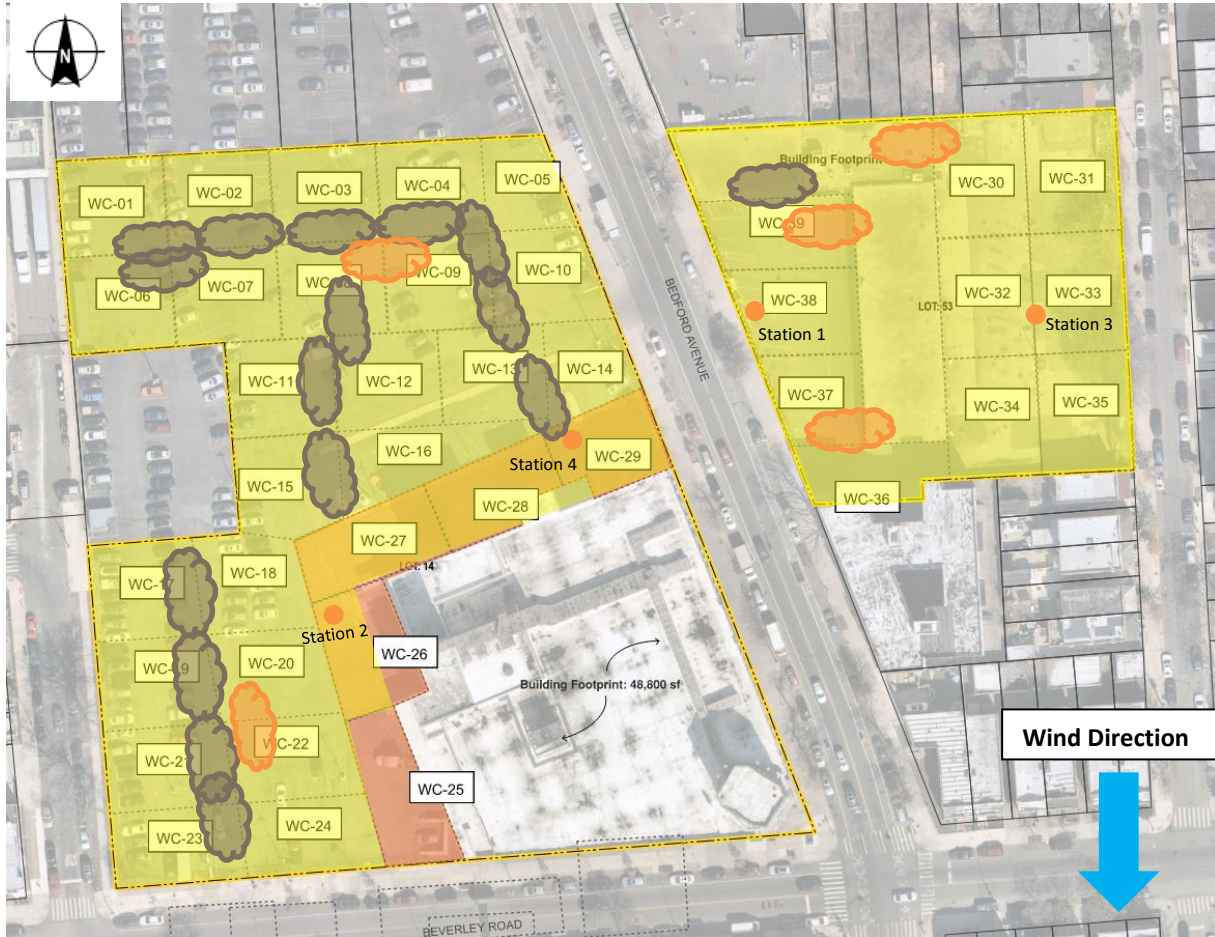
*Photo 1: View of H piles and lagging installed in Lot 14, facing north-northwest.*



*Photo 2: View of excavation for SOE installation along the perimeter of Lot 14, facing southwest.*

**Site Plan:**

Reference: Waste Characterization Letter Figure 3 Grid Location Map, prepared by Haley & Aldrich, dated October 2023



**LEGEND:**

- Area of work
- CAMP Station
- Stockpile Location (soil/fill)
- Stockpile location (C&D)

2360 Bedford Avenue, Brooklyn NY

Air Monitoring Log

Date : 2023-11-13

Personnel : D. Djombalic & Eddy Nunez

Weather : Sunny

Humidity : 76%

Wind Direction : N to S, 4 mph

Particulate Background (ug/m3) : 5.145

PID Background (ppm) : 0.0

Action Levels : Downwind perimeter of work area above background levels

PID (ppm) : > 5 ppm for the 15-min average

Dust (ug/m3) : > 150 for the 15-min average

Minute of Time	Avg. PM10 (Station1)	Avg. PM10 (Station2)	Avg. PM10 (Station3)	Avg. PM10 (Station4)	Avg. VOC(Station1)	Avg. VOC(Station2)	Avg. VOC(Station3)	Avg. VOC(Station4)	Odors	Notes Activities/ Additional Monitoring
06:45	13.766	4.833	19.266	5.145	0.0	0.0	0.0	0.0		
07:00	11.779	8.472	14.874	5.418	0.0	0.0	0.0	0.1		
07:15	11.611	6.823	17.121	5.746	0.0	0.0	0.0	0.0		
07:30	10.120	6.270	14.317	12.755	0.0	0.0	0.0	0.0		
07:45	9.355	4.835	12.439	4.632	0.0	0.0	0.0	0.0		
08:00	8.246	6.294	10.155	6.912	0.0	0.0	0.0	0.0		
08:15	7.730	5.564	7.578	5.898	0.0	0.0	0.0	0.2		
08:30	6.770	4.893	6.109	4.621	0.0	0.0	0.0	0.1		
08:45	5.994	6.150	4.597	4.228	0.0	0.0	0.0	0.0		
09:00	5.728	4.844	4.164	3.995	0.0	0.0	0.0	0.0		
09:15	5.747	4.680	3.954	4.218	0.0	0.0	0.0	0.0		
09:30	5.753	4.449	3.851	4.076	0.0	0.0	0.0	0.0		
09:45	5.560	8.281	4.419	4.217	0.0	0.0	0.0	0.0		
10:00	5.855	42.852	6.266	4.623	0.0	0.0	0.0	0.0		
10:15	6.175	5.419	5.215	4.337	0.0	0.0	0.0	0.0		
10:30	5.682	4.890	4.147	4.261	0.0	0.0	0.0	0.0		
10:45	5.674	5.293	4.612	4.733	0.0	0.0	0.0	0.0		

2360 Bedford Avenue, Brooklyn NY

Air Monitoring Log

Minute of Time	Avg. PM10 (Station1)	Avg. PM10 (Station2)	Avg. PM10 (Station3)	Avg. PM10 (Station4)	Avg. VOC(Station1)	Avg. VOC(Station2)	Avg. VOC(Station3)	Avg. VOC(Station4)	Odors	Notes Activities/ Additional Monitoring
11:00	5.096	4.280	4.125	4.2	0.0	0.0	0.0	0.0		
11:15	5.326	4.340	7.523	4.7	0.0	0.0	0.0	0.0		
11:30	5.375	4.421	4.158	4.4	0.0	0.0	0.0	0.0		
11:45	4.720	4.116	4.016	4.7	0.0	0.0	0.0	0.0		
12:00	4.639	4.188	3.758	5.6	0.0	0.0	0.0	0.0		
12:15	4.692	3.509	3.210	4.4	0.0	0.0	0.0	0.0		
12:30	4.246	3.917	3.586	4.0	0.0	0.0	0.0	0.0		
12:45	5.073	4.630	4.069	4.5	0.0	0.0	0.0	0.0		
13:00	5.226	4.881	4.312	5.1	0.0	0.0	0.0	0.0		
13:15	5.901	5.789	5.228	5.9	0.0	0.0	0.0	0.0		
13:30	6.165	5.517	5.212	6.2	0.0	0.0	0.0	0.0		
13:45	5.817	5.838	5.571	8.1	0.0	0.0	0.0	0.0		
14:00		6.724		23.7		0.0		0.0		
14:15		6.623		23.3		0.0		0.0		
14:30		7.746		10.4		0.0		0.0		
14:45		9.021		9.5		0.0		0.0		
15:00		8.598		8.8		0.0		0.0		
15:15		7.307		12.8		0.0		0.0		