

Project	Bedford Beverly Brownfield Site	Report No.	10
BCP Site	BCP Site No. C224384	Date	10/18/2023
Location	2359 and 2360 Bedford Avenue, Brooklyn, NY	File No.	0205432
Client	Bedford Beverly Acquisitions LLC, Star Demolition (Star), Maman Contracting (Maman)	Temperature	51-65 °F
Contractor	Haley & Aldrich	Wind Direction	N to S, 10 mph
Weather	Mostly Cloudy	Personnel on Site	D. Djombalic
Humidity	84%	Time on Site	6:45am to 2:30pm

Haley & Aldrich of New York (Haley & Aldrich) was present to document implementation of the Remedial Action Work Plan (RAWP) prepared by Haley & Aldrich currently under review by NYSDEC and the NYSDEC-approved Change of Use dated 17 August 2023 to begin support of excavation work. Site observations are summarized below.

Daily Observations:

- Haley & Aldrich field personnel mobilized and set up two Aeroqual AQS1 series air quality monitors at the Site to perform community air monitoring.
- Contractor (Star) continued demolition of the former building on Lot 53 and stockpiled demolition debris for disposal.

Waste Disposal/Backfill Import Tracking:

Material Export:

- No soil was transported off-site.
- C&D disposal is summarized below:

	<i>Facility: Flushing Asphalt Recycling, Flushing NY (Asphalt)</i>		<i>Totals:</i>	
<i>Today:</i>	0 Loads	0 CY	0 Loads	0 CY
<i>Total:</i>	<u>31 Loads</u>	<u>620 CY</u>	<u>31 Loads</u>	<u>620 CY</u>

Material Import:

- No material was imported to the Site.

Samples Collected:

- No samples were collected.

CAMP Activities:

- Air monitoring during ground-intrusive activities was performed at two locations during ground intrusive work from 8:00 am to 2:15 pm. No 15-minute average concentration of volatiles organic compounds (VOCs) or particulate 15-minute average concentration of matter smaller than 10 microns in diameter (PM10) exceeded the action levels. No visible dust was observed leaving the site perimeter.

Activities Planned for Coming Week:

- Contractor (Star) will continue demolition of the former building on Lot 53.
- Contractor (Maman) will continue stripping asphalt on both lots and stockpile throughout the Site for disposal.

Site Photographs:



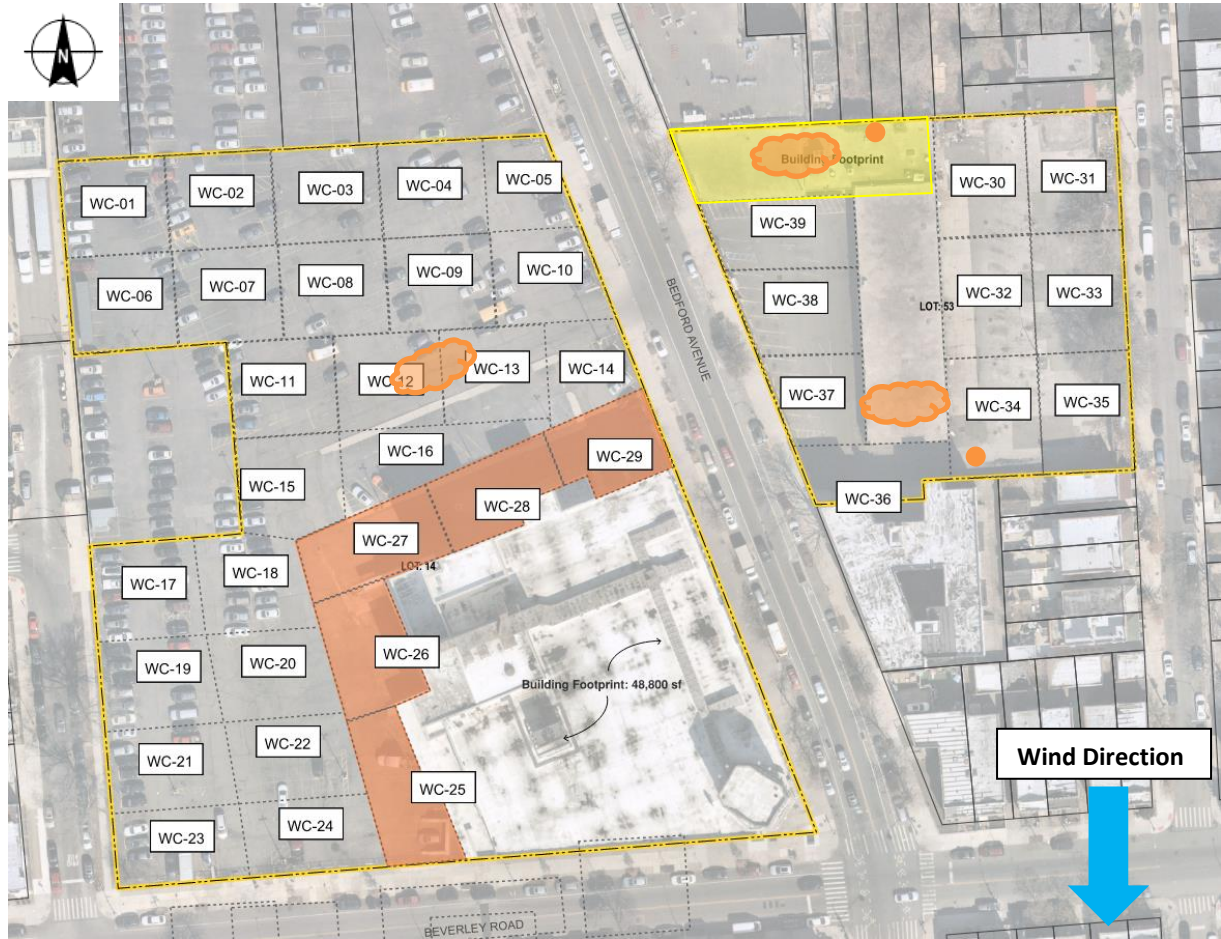
Photo 1: View of demolition work, facing northwest.



Photo 2: View of demolition work, facing northwest.

Site Plan:

Reference: Waste Characterization Letter Figure 3 Grid Location Map, prepared by Haley & Aldrich, dated October 2023



LEGEND:

- Area of work
- CAMP Station
- Stockpile Location (soil/fill)
- Stockpile location (C&D)

2360 Bedford Avenue, Brooklyn NY

Air Monitoring Log

Date : 2023-10-18

Personnel : D. Djombalic

Weather : Mostly Cloudy

Humidity : 84%

Wind Direction : N to S, 10 mph

Particulate Background (mg/m3) : 0.008

PID Background (ppm) : 0.0

Action Levels : Downwind perimeter of work area above background levels

PID (ppm) : > 5 ppm for the 15-min average

Dust (mg/m3) : > 0.15 for the 15-min average

Minute of Time	Avg. PM10 (Station1)	Avg. PM10 (Station2)	Avg. PM10 (Station3)	Avg. PM10 (Station4)	Avg. VOC(Station1)	Avg. VOC(Station2)	Avg. VOC(Station3)	Avg. VOC(Station4)	Odors	Notes Activities/ Additional Monitoring
08:00	0.008		0.008		0.0		0.0			
08:15	0.006		0.005		0.0		0.0			
08:30	0.008		0.005		0.0		0.0			
08:45	0.006		0.005		0.1		0.1			
09:00	0.005		0.005		0.0		0.0			
09:15	0.005		0.005		0.0		0.0			
09:30	0.006		0.006		0.0		0.0			
09:45	0.005		0.005		0.0		0.0			
10:00	0.006		0.005		0.0		0.0			
10:15	0.006		0.005		0.0		0.0			
10:30	0.005		0.005		0.0		0.0			
10:45	0.004		0.004		0.0		0.0			

2360 Bedford Avenue, Brooklyn NY

Air Monitoring Log

Minute of Time	Avg. PM10 (Station1)	Avg. PM10 (Station2)	Avg. PM10 (Station3)	Avg. PM10 (Station4)	Avg. VOC(Station1)	Avg. VOC(Station2)	Avg. VOC(Station3)	Avg. VOC(Station4)	Odors	Notes Activities/ Additional Monitoring
11:00	0.003		0.003		0.0		0.0			
11:15	0.004		0.004		0.0		0.0			
11:30	0.003		0.004		0.0		0.0			
11:45	0.003		0.003		0.0		0.0			
12:00	0.005		0.006		0.0		0.0			
12:15	0.007		0.006		0.0		0.0			
12:30	0.007		0.005		0.0		0.0			
12:45	0.007		0.004		0.0		0.0			
13:00	0.007		0.006		0.0		0.0			
13:15	0.004		0.004		0.0		0.0			
13:30	0.003		0.003		0.0		0.0			
13:45	0.006		0.003		0.0		0.0			
14:00	0.004		0.004		0.0		0.0			
14:15	0.004		0.003		0.0		0.0			