



Antea USA, Inc.
500 Summit Lake Drive, Suite 150
Valhalla, New York 10595 USA
www.anteagroup.com

July 30, 2013

Mrs. Rui Jun Feng
NYSDEC Region 2
Hunters Point Plaza
47-40 21st Street – 2nd Floor
Long Island City, NY 11101-5401

**Re: Ground Water Monitoring Report – Second Quarter 2013
NYSDEC Spill Number 97-13442
BP Station Number 03887
164 4th Ave.
Brooklyn, Kings County, New York**

Dear Mrs. Feng:

Antea Group has prepared the enclosed Ground Water Monitoring Report on behalf of Atlantic Richfield Company (Atlantic Richfield), a BP-affiliated company. The report details ground water monitoring results from the above-referenced work site. Ground water samples were collected on May 13, 2013.

The site is on a quarterly monitoring schedule. The next sampling event is scheduled for the month of August 2013.

Should you have any questions or comments, please do not hesitate to contact me at 914.495.9937.

Sincerely,
Antea Group



Christopher Meyer
Senior Project Manager

Encl. Ground Water Monitoring Report – Second Quarter 2013

Cc: Nicholas Onufrak - Atlantic Richfield Company

BP STATION NUMBER 03887 GROUND WATER MONITORING REPORT (Second Quarter 2013)

Prepared For: Atlantic Richfield Company
Prepared By: Antea Group
Report Date: 7/30/2013

GROUND WATER GAUGING AND SAMPLING METHODS

During this ground water monitoring event, the monitoring wells were gauged for depth to ground water and for the presence of light non-aqueous phase liquid (LNAPL). The depth to ground water and presence of LNAPL, if any, were gauged using an oil/water interface probe capable of measuring to the nearest 0.01 foot. The ground water level measurements were converted to ground water elevations using top of monitoring well casing elevations. Top of casing elevations were referenced to an arbitrary, on-site datum. Ground water elevations were corrected for the presence of LNAPL, as appropriate, using a reference value for LNAPL specific gravity of 0.75.

Prior to sampling, the volume of water contained within each monitoring well was calculated using the well diameter and water column height. Whenever possible, a volume of ground water equivalent to at least three well volumes was purged from each monitoring well using a disposable polyethylene bailer and/or a mechanical pump with dedicated polyethylene tubing. Dedicated polyethylene bailers were used to collect the ground water samples. The samples were poured from the bailers into dedicated laboratory-supplied glassware. The glassware was then placed into a cooler and maintained at a temperature of less than 4-degrees Celsius during transportation to the laboratory.

The ground water samples were forwarded with a trip blank and under chain-of-custody procedures to Eurofins Lancaster Laboratories (Lancaster) of Lancaster, Pennsylvania. Lancaster is a New York State Department of Health-certified laboratory (Certification Number 10670). The ground water samples were analyzed for benzene, toluene, ethylbenzene, xylenes (BTEX), and methyl tertiary-butyl ether (MTBE) in accordance with United States Environmental Protection Agency (USEPA) Method 8260.

GROUND WATER GAUGING AND SAMPLING RESULTS

The location of the subject site is shown on the Site Location Map, Figure 1. Data collected during well gauging activities is summarized in Table 1, while ground water elevation contours calculated using the corrected water level elevations are illustrated in Figure 2. Ground water sulfate analytical results from the samples collected since September 2012 are summarized in Table 2. Hydrographs depicting historical ground water elevation data for representative monitoring wells are included in Figure 3.

Ground water analytical results from the samples collected during this reporting period are summarized in Table 1 and plotted on Figure 2. The laboratory analytical report is provided as Appendix A.

Historical ground water analytical data are also provided in Table 1 for reference.

CONCLUSIONS AND RECOMMENDATIONS

Concentrations of BTEX and MTBE in excess of applicable TOGS WQS (Technical & Operational Guidance Series 1.1.1, Ambient Water Quality Standards and Guidance Values) were detected in ground water samples collected during this ground water monitoring event. Antea Group intends to continue ground water monitoring at the subject site.

ATTACHMENTS

Figures: Figure 1 Site Location Map
 Figure 2 Site Ground Water Contour/Analyte Concentration Map
 Figure 3 Ground Water Elevation Trend Chart

Tables: Table 1 Ground Water Gauging and Analytical Data
 Table 2 Sulfate Analytical Data

Appendices: Appendix A Laboratory Analytical Results Report – May 13, 2013

LIMITATIONS

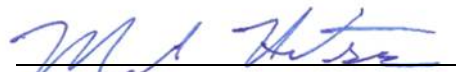
The recommendations contained in this report represent Antea Group's professional opinions based upon currently available information and are arrived at in accordance with currently acceptable professional standards. This report is based upon a specific scope of work requested by the client. The Contract between Antea Group and its client outlines the scope of work and only those tasks specifically authorized by that contract or outlined in this report were performed. This report is intended only for the use of Antea Group's Client and anyone else specifically listed on this report. Antea Group will not and cannot be liable for unauthorized reliance by any other party. Other than as contained in this paragraph, Antea Group makes no express or implied warranty as to the contents of this report.

Prepared by:



Pedro Owsik
Staff Professional

Reviewed by:



Mark Hutson
Project Manager

Figures



MAP BASED ON USGS 7.5 MINUTES SERIES TOPOGRAPHIC MAP
 BROOKLYN, NEW YORK QUADRANGLE
 DATE: 1967 REVISED 1979

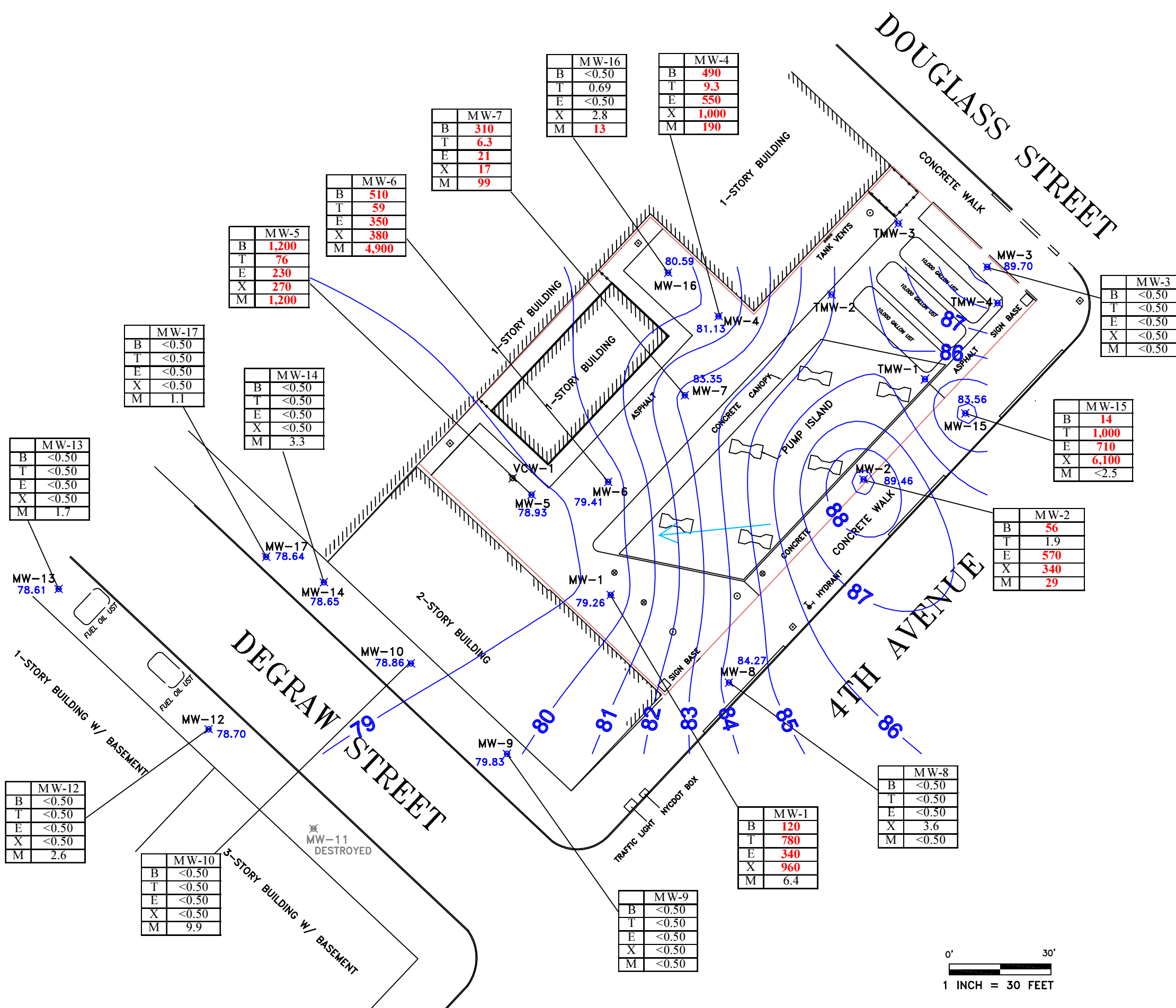
FIGURE 1

SITE LOCATION MAP

BP SERVICE STATION NUMBER 3887
 164 4TH AVENUE
 BROOKLYN, NEW YORK

PROJECT NO.: G02JF-RP50	DRAWN BY: SCJ
PREPARED BY: DS	DATE: 2/21/05
FILE NAME: SLOC	REVIEWED BY: PZM





LEGEND:

- MW-1 MONITORING WELL LOCATION
- VAPOR CLUSTER WELL LOCATION
- FENCE
- PROPERTY LINE
- MANHOLE
- LIGHT POLE
- DRAIN

B: BENZENE
 E: ETHYLBENZENE
 T: TOLUENE
 X: XYLENES
 M: METHYL TERTIARY-BUTYL ETHER (MTBE)

CONCENTRATIONS REPORTED IN MICROGRAMS PER LITER $\mu\text{g/L}$
 VALUES BOLDED IN RED ARE IN EXCESS OF NYSDEC TOGS WQS

79.90 GROUND WATER ELEVATION (FT)
 INFERRED DIRECTION OF GROUND WATER FLOW
 GROUND WATER ELEVATION CONTOUR LINE (FT)
 NI NOT INCLUDED IN CONTOUR MAP
 NM NOT MEASURED

FIGURE 2
 SITE GROUND WATER CONTOUR/ANALYTE
 CONCENTRATION MAP (MAY 13, 2013)
 BP STATION NUMBER 03887
 164 4TH AVENUE
 BROOKLYN, NEW YORK

PROJECT NO.: 03887	DRAWN BY: -LKO
REVIEWED BY: MG	DATE: 4/17/2013
FILE NAME: 03887_GW-2013	



0' 30'
 1 INCH = 30 FEET

MW-13	
B	<0.50
T	<0.50
E	<0.50
X	<0.50
M	1.7

MW-17	
B	<0.50
T	<0.50
E	<0.50
X	<0.50
M	1.1

MW-5	
B	1,200
T	76
E	230
X	270
M	1,200

MW-6	
B	510
T	59
E	350
X	380
M	4,900

MW-7	
B	310
T	6.3
E	21
X	17
M	99

MW-16	
B	<0.50
T	0.69
E	<0.50
X	2.8
M	13

MW-4	
B	490
T	9.3
E	550
X	1,000
M	190

MW-3	
B	<0.50
T	<0.50
E	<0.50
X	<0.50
M	<0.50

MW-15	
B	14
T	1,000
E	710
X	6,100
M	<2.5

MW-2	
B	56
T	1.9
E	570
X	340
M	29

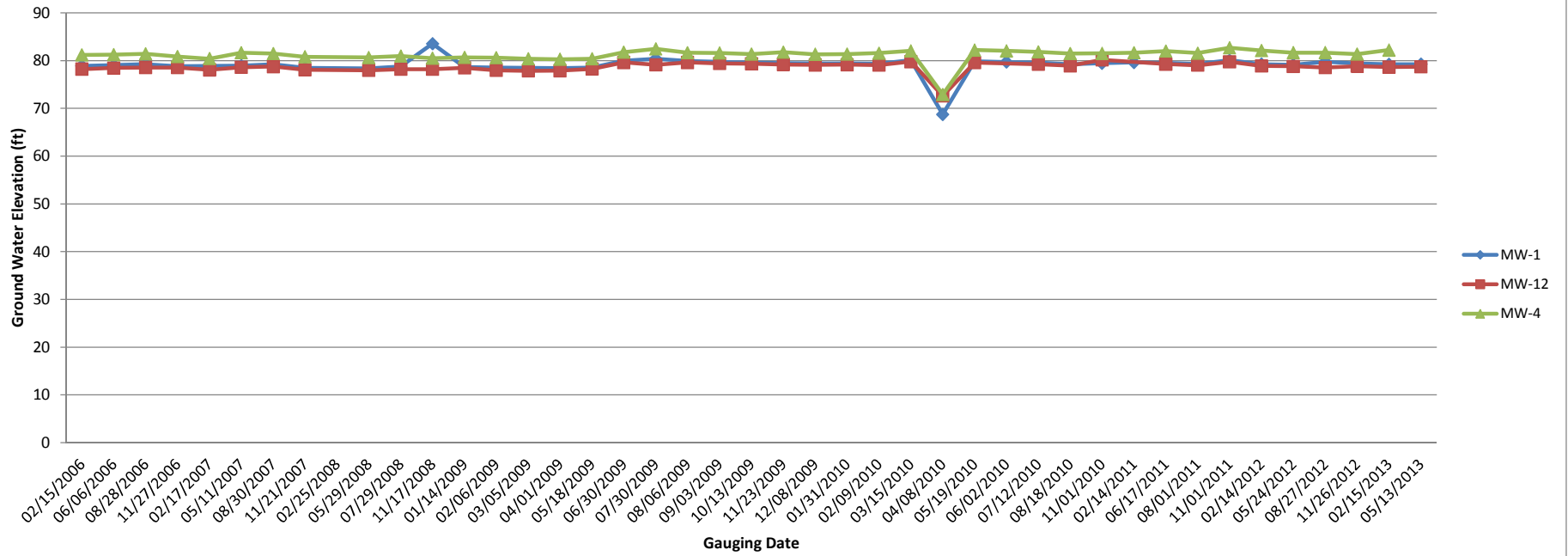
MW-8	
B	<0.50
T	<0.50
E	<0.50
X	3.6
M	<0.50

MW-1	
B	120
T	780
E	340
X	960
M	6.4

MW-9	
B	<0.50
T	<0.50
E	<0.50
X	<0.50
M	<0.50

MW-10	
B	<0.50
T	<0.50
E	<0.50
X	<0.50
M	9.9

Figure 3
GROUND WATER HYDROGRAPH
BP Station Number 03887
164 4th Ave.
Brooklyn, NY



Tables

TABLE 1
GROUND WATER GAUGING AND ANALYTICAL DATA
 BP Station Number 03887
 164 4th Ave
 Brooklyn, NY

Well ID	Date	GROUND WATER GAUGING DATA						GROUND WATER ANALYTICAL DATA					
		Reference Elevation (ft)	Depth to Water (ft)	Depth to LNAPL (ft)	LNAPL Thickness (ft)	Water Elevation (ft)*	Purge Volume (gals)*	Benzene (µg/L)	Toluene (µg/L)	Ethyl-benzene (µg/L)	Xylenes (µg/L)	Total BTEX (µg/L)	MTBE (µg/L)
NYSDEC TOGS WQS		NGV	NGV	NGV	NGV	NGV	NGV	1	5	5	5	NGV	10
MW-1	06/28/2000	98.07	20.37	NP	NP	77.7		103.0	289	287	1,330	2,009	1,430
MW-1	09/10/2001	98.07	20.47	NP	NP	77.6		129	254	253	989	1,625	594
MW-1	02/27/2002	98.07	20.84	NP	NP	77.23		76.8	163	226	701	1,167	296
MW-1	08/08/2002	98.07	20.50	NP	NP	77.57		60.6	89	123	444	717	229
MW-1	12/04/2002	98.07	20.36	NP	NP	77.71		165	197	278	886	1,526	554
MW-1	03/26/2003	98.07	19.99	NP	NP	78.08		115	161	285	779	1,340	624
MW-1	05/15/2003	98.07	20.01	NP	NP	78.06		127	223	325	1,050	1,725	647
MW-1	09/04/2003	98.07	18.96	NP	NP	79.11		76.7	96.2	138	403	714	309
MW-1	12/17/2003	98.07	18.96	NP	NP	79.11		70.0	127	185	542	924	114
MW-1	02/11/2004	98.07	19.44	NP	NP	78.63		75.5	115	250	716	1,157	156
MW-1	05/18/2004	98.07	19.40	NP	NP	78.67		52.6	76.8	197	540	866	70.8
MW-1	08/18/2004	98.07	18.78	NP	NP	79.29		64.1	94.2	229	787	1,174	206
MW-1	11/23/2004	98.07	19.43	NP	NP	78.64		85.6	80.1	215	481	862	166
MW-1	02/15/2005	98.07	19.51	NP	NP	78.56		79.3	80.6	213	442	815	159
MW-1	05/12/2005	98.07	19.51	NP	NP	78.56		Gauged Only					
MW-1	05/27/2005	98.07	Sampled Only					89.3	80.2	260	539	969	248
MW-1	09/07/2005	98.07	19.73	NP	NP	78.34		80.7	49.0	156	265	551	254
MW-1	11/15/2005	98.07	19.11	NP	NP	78.96		530	2,850	297	801	4,478	291
MW-1	02/15/2006	98.07	19.16	NP	NP	78.91		658	3,770	613	1,910	6,951	73.0

TABLE 1
GROUND WATER GAUGING AND ANALYTICAL DATA
 BP Station Number 03887
 164 4th Ave
 Brooklyn, NY

Well ID	Date	GROUND WATER GAUGING DATA						GROUND WATER ANALYTICAL DATA					
		Reference Elevation (ft)	Depth to Water (ft)	Depth to LNAPL (ft)	LNAPL Thickness (ft)	Water Elevation (ft)*	Purge Volume (gals)*	Benzene (µg/L)	Toluene (µg/L)	Ethyl-benzene (µg/L)	Xylenes (µg/L)	Total BTEX (µg/L)	MTBE (µg/L)
NYSDEC TOGS WQS		NGV	NGV	NGV	NGV	NGV	NGV	1	5	5	5	NGV	10
MW-1	06/06/2006	98.07	19.02	NP	NP	79.05		682	1,990	712	2,280	5,664	49.3
MW-1	08/28/2006	98.07	18.83	NP	NP	79.24		703	1,620	842	2,490	5,655	42.9
MW-1	11/27/2006	98.07	19.23	NP	NP	78.84		379	261	388	350	1,378	118
MW-1	02/17/2007	98.07	No Access					No Access					
MW-1	05/11/2007	98.07	19.11	NP	NP	78.96		241	118	218	126	703	87.9
MW-1	08/30/2007	98.07	18.83	NP	NP	79.24		19.2	5.3	4.8	19.7	49.0	58.5
MW-1	11/21/2007	98.07	19.58	NP	NP	78.49		42.4	8.7	22.7	32.5	106	51.6
MW-1	02/25/2008	98.07	No Access					No Access					
MW-1	05/29/2008	98.07	19.71	NP	NP	78.36		200	47	260	350	857	120
MW-1	07/29/2008	98.07	19.31	NP	NP	78.76		120	40	150	100	410	170
MW-1	11/17/2008	98.07	14.53	NP	NP	83.54		140	190	210	370	910	74
MW-1	01/14/2009	98.07	19.44	NP	NP	78.63		Gauged Only					
MW-1	02/06/2009	98.07	19.50	NP	NP	78.57		170	190	330	790	1,480	45
MW-1	03/05/2009	98.07	No Access- Snow Cover					Gauged Only					
MW-1	04/01/2009	98.07	19.63	NP	NP	78.44		Gauged Only					
MW-1	05/18/2009	98.07	19.52	NP	NP	78.55		240	46	390	580	1,256	52
MW-1	06/30/2009	99.14	19.14	NP	NP	80.00		Gauged Only					
MW-1	07/30/2009	99.14	18.76	NP	NP	80.38		Gauged Only					
MW-1	08/06/2009	99.14	19.24	NP	NP	79.90		180	29	270	190	669	92

TABLE 1
GROUND WATER GAUGING AND ANALYTICAL DATA
 BP Station Number 03887
 164 4th Ave
 Brooklyn, NY

Well ID	Date	GROUND WATER GAUGING DATA						GROUND WATER ANALYTICAL DATA					
		Reference Elevation (ft)	Depth to Water (ft)	Depth to LNAPL (ft)	LNAPL Thickness (ft)	Water Elevation (ft)*	Purge Volume (gals)*	Benzene (µg/L)	Toluene (µg/L)	Ethyl-benzene (µg/L)	Xylenes (µg/L)	Total BTEX (µg/L)	MTBE (µg/L)
NYSDEC TOGS WQS		NGV	NGV	NGV	NGV	NGV	NGV	1	5	5	5	NGV	10
MW-1	09/03/2009	99.14	19.39	NP	NP	79.75		Gauged Only					
MW-1	10/13/2009	99.14	19.54	NP	NP	79.60		Gauged Only					
MW-1	11/23/2009	99.14	19.69	NP	NP	79.45		300	58	380	300	1,038	470
MW-1	12/08/2009	99.14	19.76	NP	NP	79.38		Gauged Only					
MW-1	01/31/2010	99.14	19.71	NP	NP	79.43		Gauged Only					
MW-1	02/09/2010	99.14	19.80	NP	NP	79.34		260	57	390	450	1,157	340
MW-1	03/15/2010	99.14	19.06	NP	NP	80.08		210	140	520	850	1,720	66
MW-1	04/08/2010	99.14	30.41	NP	NP	68.73		Gauged Only					
MW-1	05/19/2010	99.14	19.26	NP	NP	79.88		1.1	0.62 J	0.58 J	0.83 J	3.13	7.9
MW-1	06/02/2010	99.14	19.42	NP	NP	79.72		Gauged Only					
MW-1	07/12/2010	99.14	19.57	NP	NP	79.57		Gauged Only					
MW-1	08/18/2010	99.14	19.88	NP	NP	79.26		140	56	120	110	426	680
MW-1	11/01/2010	99.14	19.70	NP	NP	79.44		180	420	350	530	1,480	70
MW-1	02/14/2011	99.14	19.52	NP	NP	79.62		240	590	400	1,000	2,230	130
MW-1	06/17/2011	99.14	19.60	NP	NP	79.54	5.25**	210	170	360	890	1,630	58
MW-1	08/01/2011	99.14	19.83	NP	NP	79.31	5.25**	180	110	290	660	1,240	61
MW-1	11/01/2011	99.14	19.05	NP	NP	80.09	5.55	210	190	400	980	1,780	54
MW-1	02/14/2012	99.14	19.88	NP	NP	79.26	5.00	180	100	350	730	1,360	31
MW-1	05/24/2012	99.14	20	NP	NP	79.14	5.00	37	14	86	96	233	14

TABLE 1
GROUND WATER GAUGING AND ANALYTICAL DATA
 BP Station Number 03887
 164 4th Ave
 Brooklyn, NY

Well ID	Date	GROUND WATER GAUGING DATA						GROUND WATER ANALYTICAL DATA					
		Reference Elevation (ft)	Depth to Water (ft)	Depth to LNAPL (ft)	LNAPL Thickness (ft)	Water Elevation (ft)*	Purge Volume (gals)*	Benzene (µg/L)	Toluene (µg/L)	Ethyl-benzene (µg/L)	Xylenes (µg/L)	Total BTEX (µg/L)	MTBE (µg/L)
NYSDEC TOGS WQS		NGV	NGV	NGV	NGV	NGV	NGV	1	5	5	5	NGV	10
MW-1	08/27/2012	99.14	19.36	NP	NP	79.78	7.00	140	62	230	460	892	20
MW-1	11/26/2012	99.14	19.76	NP	NP	79.38	5.00	110	370	260	590	1,330	10
MW-1	02/15/2013	99.14	19.9	NP	NP	79.24	5.00	130	630	370	910	2,040	8.1
MW-1	05/13/2013	99.14	19.88	NP	NP	79.26	5.00	120	780	340	960	2,200	6.4
MW-2	06/28/2000	97.86	18.13	NP	NP	79.73		147	61.7	302	1,140	1,651	125
MW-2	04/02/2001	97.86	17.85	NP	NP	80.01		32.7	72.1	48.4	63.8	217	33.2
MW-2	09/10/2001	97.86	17.99	NP	NP	79.87		26.7	3.09	50.4	142	222	29.7
MW-2	02/27/2002	97.86	18.65	NP	NP	79.21		364	19.6	946	1,890	3,220	299
MW-2	05/10/2002	97.86	19.04	18.63	0.41	79.13		Not Sampled - LNAPL (0.41 ft)					
MW-2	08/08/2002	97.86	19.39	18.73	0.66	78.97		Not Sampled - LNAPL (0.66 ft)					
MW-2	12/04/2002	97.86	18.62	18.20	0.42	79.56		Not Sampled - LNAPL (0.42 ft)					
MW-2	03/26/2003	97.86	18.60	18.22	0.38	79.55		Not Sampled - LNAPL (0.38 ft)					
MW-2	05/15/2003	97.86	18.71	18.25	0.46	79.50		Not Sampled - LNAPL (0.46 ft)					
MW-2	09/04/2003	97.86	17.48	17.31	0.17	80.51		Not Sampled - LNAPL (0.17 ft)					
MW-2	12/17/2003	97.86	17.80	17.79	0.01	80.07		581	104	9,570	34,500	44,755	521
MW-2	02/11/2004	97.86	17.98	NP	NP	79.88		577	76.0	3,270	10,900	14,823	720
MW-2	05/18/2004	97.86	17.81	17.74	0.07	80.10		Not Sampled - LNAPL (0.07 ft)					
MW-2	08/18/2004	97.86	17.02	NP	NP	80.84		438	27.2	1,460	3,480	5,405	411

TABLE 1
GROUND WATER GAUGING AND ANALYTICAL DATA
 BP Station Number 03887
 164 4th Ave
 Brooklyn, NY

Well ID	Date	GROUND WATER GAUGING DATA						GROUND WATER ANALYTICAL DATA					
		Reference Elevation (ft)	Depth to Water (ft)	Depth to LNAPL (ft)	LNAPL Thickness (ft)	Water Elevation (ft)*	Purge Volume (gals)*	Benzene (µg/L)	Toluene (µg/L)	Ethyl-benzene (µg/L)	Xylenes (µg/L)	Total BTEX (µg/L)	MTBE (µg/L)
NYSDEC TOGS WQS		NGV	NGV	NGV	NGV	NGV	NGV	1	5	5	5	NGV	10
MW-2	11/23/2004	97.86	17.33	17.31	0.02	80.55		Not Sampled - LNAPL (0.02 ft)					
MW-2	02/15/2005	97.86	17.11	NP	NP	80.75		222	13.2 J	2,280	6,370	8,885	77.8
MW-2	05/12/2005	97.86	16.98	NP	NP	80.88		Gauged Only					
MW-2	05/27/2005	97.86	Sampled Only					146	4.7	778	1,810	2,739	133
MW-2	09/07/2005	97.86	17.33	NP	NP	80.53		254	7.3	1,120	2,660	4,041	213
MW-2	11/15/2005	97.86	16.77	NP	NP	81.09		487	14.5	1,420	4,130	6,052	386
MW-2	02/15/2006	97.86	16.65	NP	NP	81.21		607	34.3	3,470	8,420	12,531	658
MW-2	06/06/2006	97.86	16.58	NP	NP	81.28		388	12.2	1,500	3,710	5,610	311
MW-2	08/28/2006	97.86	16.42	NP	NP	81.44		305	13.4	1,520	3,820	5,658	308
MW-2	11/27/2006	97.86	17.00	17.00	Sheen	80.86		193	6.8	1,050	1,790	3,040	241
MW-2	02/17/2007	97.86	17.52	17.44	0.08	80.40		Not Sampled - LNAPL (0.08 ft)					
MW-2	05/11/2007	97.86	16.23	NP	NP	81.63		87.1	2.8	728	1,310	2,128	53.0
MW-2	08/30/2007	97.86	16.83	NP	NP	81.03		146	6.4 J	786	1,320	2,258	239
MW-2	11/21/2007	97.86	17.14	NP	NP	80.72		Not Sampled - Product Present					
MW-2	02/25/2008	97.86	17.95	NP	NP	79.91		200	<10	1,200	1,100	2,500	150
MW-2	05/29/2008	97.86	17.14	NP	NP	80.72		250	<5.0	450	330	1,030	220
MW-2	07/29/2008	97.86	16.95	NP	NP	80.91		68	<0.50	64	59	191	48
MW-2	11/17/2008	97.86	17.39	17.36	0.03	80.49		180	<2.5	590	400	1,170	160
MW-2	01/14/2009	97.86	17.16	NP	NP	80.70		Gauged Only					

TABLE 1
GROUND WATER GAUGING AND ANALYTICAL DATA
 BP Station Number 03887
 164 4th Ave
 Brooklyn, NY

Well ID	Date	GROUND WATER GAUGING DATA						GROUND WATER ANALYTICAL DATA					
		Reference Elevation (ft)	Depth to Water (ft)	Depth to LNAPL (ft)	LNAPL Thickness (ft)	Water Elevation (ft)*	Purge Volume (gals)*	Benzene (µg/L)	Toluene (µg/L)	Ethyl-benzene (µg/L)	Xylenes (µg/L)	Total BTEX (µg/L)	MTBE (µg/L)
NYSDEC TOGS WQS		NGV	NGV	NGV	NGV	NGV	NGV	1	5	5	5	NGV	10
MW-2	02/06/2009	97.86	17.26	NP	NP	80.60		230	4.1 J	740	1,600	2,574	280
MW-2	03/05/2009	97.86	17.49	17.46	0.03	80.39		Gauged Only					
MW-2	04/01/2009	97.86	17.61	17.57	0.04	80.28		Gauged Only					
MW-2	05/18/2009	97.86	17.51	17.47	0.04	80.38		Not Sampled - LNAPL (0.04 ft)					
MW-2	06/30/2009	98.97	17.16	NP	NP	81.81		Gauged Only					
MW-2	07/30/2009	98.97	17.85	NP	NP	81.12		Gauged Only					
MW-2	08/06/2009	98.97	17.31	NP	NP	81.66		210	4.8	750	960	1,925	250
MW-2	09/03/2009	98.97	17.38	NP	NP	81.59		Gauged Only					
MW-2	10/13/2009	98.97	17.58	17.57	0.01	81.40		Gauged Only					
MW-2	11/23/2009	98.97	17.69	NP	NP	81.28		200	3.8	610	600	1,414	130
MW-2	12/08/2009	98.97	17.64	NP	NP	81.33		Gauged Only					
MW-2	01/31/2010	98.97	17.57	NP	NP	81.40		Gauged Only					
MW-2	02/09/2010	98.97	17.59	NP	NP	81.38		140	3.1	440	340	923	87
MW-2	03/15/2010	98.97	16.89	NP	NP	82.08		130	2.2	230	68	430	61
MW-2	04/08/2010	98.97	28.67	NP	NP	70.30		Gauged Only					
MW-2	05/19/2010	98.97	16.72	NP	NP	82.25		160	2.6	520	350	1,033	120
MW-2	06/02/2010	98.97	16.89	NP	NP	82.08		Gauged Only					
MW-2	07/12/2010	98.97	17.13	NP	NP	81.84		Gauged Only					
MW-2	08/18/2010	98.97	17.46	NP	NP	81.51		120	2.9 J	880	1,400	2,403	110

TABLE 1
GROUND WATER GAUGING AND ANALYTICAL DATA
 BP Station Number 03887
 164 4th Ave
 Brooklyn, NY

Well ID	Date	GROUND WATER GAUGING DATA						GROUND WATER ANALYTICAL DATA					
		Reference Elevation (ft)	Depth to Water (ft)	Depth to LNAPL (ft)	LNAPL Thickness (ft)	Water Elevation (ft)*	Purge Volume (gals)*	Benzene (µg/L)	Toluene (µg/L)	Ethylbenzene (µg/L)	Xylenes (µg/L)	Total BTEX (µg/L)	MTBE (µg/L)
NYSDEC TOGS WQS		NGV	NGV	NGV	NGV	NGV	NGV	1	5	5	5	NGV	10
MW-2	11/01/2010	98.97	17.45	NP	NP	81.52		110	2.7	880	1,200	2,193	85
MW-2	02/14/2011	98.97	17.32	NP	NP	81.65		99	2.7 J	400	480	982	74
MW-2	06/17/2011	98.97	16.96	NP	NP	82.01	5.25**	94	<5.0	650	720	1,464	87
MW-2	08/01/2011	98.97	17.38	NP	NP	81.59	5.00**	110	2.3 J	570	530	1,212	110
MW-2	11/01/2011	98.97	16.26	NP	NP	82.71	5.50	76	<2.5	580	460	1,116	77
MW-2	02/14/2012	98.97	16.85	NP	NP	82.12	5.25	100	2	570	500	1,172	93
MW-2	05/24/2012	98.97	17.29	NP	NP	81.68	5.00	110	1.4	350	250	711	62
MW-2	08/27/2012	98.97	17.3	NP	NP	81.67	5.00	130	<5.0	840	600	1,570	120
MW-2	11/26/2012	98.97	17.56	NP	NP	81.41	5.00	91	<5.0	370	300	761	74
MW-2	02/15/2013	98.97	16.72	NP	NP	82.25	5.25	41	<5.0	800	760	1,601	34
MW-2	05/13/2013	98.97	9.51	NP	NP	89.46	9.00	56	1.9 J	570	340	968	29
MW-3	06/28/2000	97.91	18.26	NP	NP	79.65		<0.5	<0.5	<0.5	52.6	52.6	7.23
MW-3	04/02/2001	97.91	17.86	NP	NP	80.05		8.8	73	11.40	47.80	141	17.2
MW-3	09/10/2001	97.91	18.01	NP	NP	79.9		<0.5	<0.5	<0.5	<0.5	ND	28.7
MW-3	02/27/2002	97.91	18.65	NP	NP	79.26		<1.0	<1.0	<1.0	<1.0	ND	<1.0
MW-3	05/10/2002	97.91	18.72	NP	NP	79.19		<0.5	0.875	1.08	7.97	9.93	<10
MW-3	08/08/2002	97.91	18.87	NP	NP	79.04		<0.5	<0.5	<0.5	<0.5	ND	<10
MW-3	12/04/2002	97.91	18.29	NP	NP	79.62		<1.0	<1.0	<1.0	<1.0	ND	<1.0

TABLE 1
GROUND WATER GAUGING AND ANALYTICAL DATA
 BP Station Number 03887
 164 4th Ave
 Brooklyn, NY

Well ID	Date	GROUND WATER GAUGING DATA						GROUND WATER ANALYTICAL DATA					
		Reference Elevation (ft)	Depth to Water (ft)	Depth to LNAPL (ft)	LNAPL Thickness (ft)	Water Elevation (ft)*	Purge Volume (gals)*	Benzene (µg/L)	Toluene (µg/L)	Ethyl-benzene (µg/L)	Xylenes (µg/L)	Total BTEX (µg/L)	MTBE (µg/L)
NYSDEC TOGS WQS		NGV	NGV	NGV	NGV	NGV	NGV	1	5	5	5	NGV	10
MW-3	03/26/2003	97.91	18.30	NP	NP	79.61		<1.0	<1.0	<1.0	<1.0	ND	<1.0
MW-3	05/15/2003	97.91	18.34	NP	NP	79.57		<1.0	<1.0	<1.0	<1.0	ND	<1.0
MW-3	09/04/2003	97.91	17.33	NP	NP	80.58		<1.0	<1.0	<1.0	<1.0	ND	0.48
MW-3	12/17/2003	97.91	17.81	NP	NP	80.10		<1.0	<1.0	<1.0	<1.0	ND	<1.0
MW-3	02/11/2004	97.91	18.02	NP	NP	79.89		<1.0	<1.0	<1.0	<1.0	ND	0.79
MW-3	05/18/2004	97.91	17.77	NP	NP	80.14		<1.0	<1.0	<1.0	<1.0	ND	ND
MW-3	08/18/2004	97.91	16.98	NP	NP	80.93		<1.0	<1.0	<1.0	<1.0	ND	<1.0
MW-3	11/23/2004	97.91	17.33	NP	NP	80.58		<1.0	<1.0	<1.0	<1.0	ND	<1.0
MW-3	02/15/2005	97.91	17.13	NP	NP	80.78		<1.0	<1.0	<1.0	<1.0	ND	<1.0
MW-3	05/12/2005	97.91	16.92	NP	NP	80.99		Gauged Only					
MW-3	05/27/2005	97.91	Sampled Only					<1.0	<1.0	<1.0	<1.0	ND	<1.0
MW-3	09/07/2005	97.91	17.31	NP	NP	80.60		<1.0	<1.0	<1.0	<1.0	ND	<1.0
MW-3	11/15/2005	97.91	16.80	NP	NP	81.11		<1.0	<1.0	<1.0	<1.0	ND	<1.0
MW-3	02/15/2006	97.91	16.72	NP	NP	81.19		<1.0	<1.0	<1.0	<1.0	ND	<1.0
MW-3	06/06/2006	97.91	16.59	NP	NP	81.32		<1.0	<1.0	<1.0	<1.0	ND	<1.0
MW-3	08/28/2006	97.91	16.46	NP	NP	81.45		<1.0	<1.0	<1.0	<1.0	ND	<1.0
MW-3	11/27/2006	97.91	16.99	NP	NP	80.92		<1.0	<1.0	<1.0	<1.0	ND	<1.0
MW-3	02/17/2007	97.91	17.46	NP	NP	80.45		<1.0	<1.0	<1.0	<1.0	ND	<1.0
MW-3	05/11/2007	97.91	16.19	NP	NP	81.72		<1.0	<1.0	<1.0	<1.0	ND	<1.0

TABLE 1
GROUND WATER GAUGING AND ANALYTICAL DATA
 BP Station Number 03887
 164 4th Ave
 Brooklyn, NY

Well ID	Date	GROUND WATER GAUGING DATA						GROUND WATER ANALYTICAL DATA					
		Reference Elevation (ft)	Depth to Water (ft)	Depth to LNAPL (ft)	LNAPL Thickness (ft)	Water Elevation (ft)*	Purge Volume (gals)*	Benzene (µg/L)	Toluene (µg/L)	Ethylbenzene (µg/L)	Xylenes (µg/L)	Total BTEX (µg/L)	MTBE (µg/L)
NYSDEC TOGS WQS		NGV	NGV	NGV	NGV	NGV	NGV	1	5	5	5	NGV	10
MW-3	08/30/2007	97.91	16.37	NP	NP	81.54		<1.0	<1.0	<1.0	<1.0	ND	<1.0
MW-3	11/21/2007	97.91	17.12	NP	NP	80.79		<1.0	<1.0	<1.0	<1.0	ND	<1.0
MW-3	02/25/2008	97.91	16.95	NP	NP	80.96		<0.50	<0.50	<0.50	1.0 J	1.0	<0.50
MW-3	05/29/2008	97.91	17.15	NP	NP	80.76		<0.50	<0.50	<0.50	<0.50	ND	<0.50
MW-3	07/29/2008	97.91	16.93	NP	NP	80.98		<0.50	<0.50	<0.50	<0.50	ND	<0.50
MW-3	11/17/2008	97.91	17.84	NP	NP	80.07		<0.50	<0.50	<0.50	<0.50	ND	<0.50
MW-3	01/14/2009	97.91	17.22	NP	NP	80.69		Gauged Only					
MW-3	02/06/2009	97.91	17.27	NP	NP	80.64		<0.50	0.55 J	<0.50	0.82 J	1.37	<0.50
MW-3	03/05/2009	97.91	17.51	NP	NP	80.40		Gauged Only					
MW-3	04/01/2009	97.91	17.63	NP	NP	80.28		Gauged Only					
MW-3	05/18/2009	97.91	17.45	NP	NP	80.46		<0.50	<0.50	<0.50	<0.50	ND	<0.50
MW-3	06/30/2009	99.03	17.19	NP	NP	81.84		Gauged Only					
MW-3	07/30/2009	99.03	16.36	NP	NP	82.67		Gauged Only					
MW-3	08/06/2009	99.03	17.30	NP	NP	81.73		<0.50	<0.50	<0.50	<0.50	ND	<0.50
MW-3	09/03/2009	99.03	17.40	NP	NP	81.63		Gauged Only					
MW-3	10/13/2009	99.03	17.59	NP	NP	81.44		Gauged Only					
MW-3	11/23/2009	99.03	17.66	NP	NP	81.37		<0.50	<0.50	<0.50	<0.50	ND	<0.50
MW-3	12/08/2009	99.03	17.54	NP	NP	81.49		Gauged Only					
MW-3	01/31/2010	99.03	17.57	NP	NP	81.46		Gauged Only					

TABLE 1
GROUND WATER GAUGING AND ANALYTICAL DATA
 BP Station Number 03887
 164 4th Ave
 Brooklyn, NY

Well ID	Date	GROUND WATER GAUGING DATA						GROUND WATER ANALYTICAL DATA					
		Reference Elevation (ft)	Depth to Water (ft)	Depth to LNAPL (ft)	LNAPL Thickness (ft)	Water Elevation (ft)*	Purge Volume (gals)*	Benzene (µg/L)	Toluene (µg/L)	Ethyl-benzene (µg/L)	Xylenes (µg/L)	Total BTEX (µg/L)	MTBE (µg/L)
NYSDEC TOGS WQS		NGV	NGV	NGV	NGV	NGV	NGV	1	5	5	5	NGV	10
MW-3	02/09/2010	99.03	17.61	NP	NP	81.42		<0.50	<0.50	<0.50	<0.50	ND	<0.50
MW-3	03/15/2010	99.03	16.84	NP	NP	82.19		<0.50	<0.50	<0.50	<0.50	ND	<0.50
MW-3	04/08/2010	99.03	31.58	NP	NP	67.45		Gauged Only					
MW-3	05/19/2010	99.03	16.74	NP	NP	82.29		<0.50	<0.50	<0.50	<0.50	ND	<0.50
MW-3	06/02/2010	99.03	16.88	NP	NP	82.15		Gauged Only					
MW-3	07/12/2010	99.03	17.15	NP	NP	81.88		Gauged Only					
MW-3	08/18/2010	99.03	18.47	NP	NP	80.56		<0.50	<0.50	<0.50	<0.50	ND	<0.50
MW-3	11/01/2010	99.03	17.42	NP	NP	81.61		<0.50	<0.50	<0.50	<0.50	ND	<0.50
MW-3	02/14/2011	99.03	17.29	NP	NP	81.74		<0.50	<0.50	<0.50	<0.50	ND	<0.50
MW-3	06/17/2011	99.03	16.89	NP	NP	82.14	7.00**	<0.50	<0.50	<0.50	<0.50	ND	<0.50
MW-3	08/01/2011	99.03	17.30	NP	NP	81.73	7.00**	<0.50	<0.50	<0.50	<0.50	ND	<0.50
MW-3	11/01/2011	99.03	16.15	NP	NP	82.88	7.50	15	<0.50	<0.50	<0.50	15.0	5.7
MW-3	02/14/2012	99.03	16.8	NP	NP	82.23	7.00	<0.50	<0.50	<0.50	<0.50	ND	<0.50
MW-3	05/24/2012	99.03	17.32	NP	NP	81.71	7.00	<0.50	<0.50	<0.50	<0.50	ND	<0.50
MW-3	08/27/2012	99.03	17.32	NP	NP	81.71	6.50	<0.50	<0.50	<0.50	<0.50	ND	<0.50
MW-3	11/26/2012	99.03	11.6	NP	NP	87.43	10.00	<0.50	<0.50	<0.50	<0.50	ND	<0.50
MW-3	02/15/2013	99.03	16.6	NP	NP	82.43	7.00	<0.50	<0.50	<0.50	<0.50	ND	2.5
MW-3	05/13/2013	99.03	9.33	NP	NP	89.70	10.75	<0.50	<0.50	<0.50	<0.50	ND	<0.50

TABLE 1
GROUND WATER GAUGING AND ANALYTICAL DATA
 BP Station Number 03887
 164 4th Ave
 Brooklyn, NY

Well ID	Date	GROUND WATER GAUGING DATA						GROUND WATER ANALYTICAL DATA					
		Reference Elevation (ft)	Depth to Water (ft)	Depth to LNAPL (ft)	LNAPL Thickness (ft)	Water Elevation (ft)*	Purge Volume (gals)*	Benzene (µg/L)	Toluene (µg/L)	Ethyl-benzene (µg/L)	Xylenes (µg/L)	Total BTEX (µg/L)	MTBE (µg/L)
NYSDEC TOGS WQS		NGV	NGV	NGV	NGV	NGV	NGV	1	5	5	5	NGV	10
MW-4	04/02/2001	98.61	18.60	NP	NP	80.01		1,190	7,050	228	3,330	11,798	7,030
MW-4	09/10/2001	98.61	18.72	NP	NP	79.89		102	221	41.4	218	582	1,070
MW-4	02/27/2002	98.61	19.51	NP	NP	79.10		1,440	817	468	1,860	4,585	9,320
MW-4	05/10/2002	98.61	19.44	NP	NP	79.17		1,530	8,370	1,240	6,550	17,690	5,370
MW-4	08/08/2002	98.61	19.44	19.39	0.05	79.21		Not Sampled - LNAPL (0.05 ft)					
MW-4	12/04/2002	98.61	19.32	18.95	0.37	79.57		Not Sampled - LNAPL (0.37 ft)					
MW-4	03/26/2003	98.61	19.25	18.96	0.29	79.58		Not Sampled - LNAPL (0.29 ft)					
MW-4	05/15/2003	98.61	19.37	18.98	0.39	79.53		Not Sampled - LNAPL (0.39 ft)					
MW-4	09/04/2003	98.61	18.06	NP	NP	80.55		81.5	273	101	443	899	10.3
MW-4	12/17/2003	98.61	18.57	NP	NP	80.04		1,660	13,600	4,750	24,700	44,710	212
MW-4	02/11/2004	98.61	18.78	NP	NP	79.83		1,300	2,000	1,050	4,350	8,700	127
MW-4	05/18/2004	98.61	18.50	NP	NP	80.11		608	922	657	2,610	4,797	55.0
MW-4	08/18/2004	98.61	17.75	NP	NP	80.86		1,390	4,830	1,850	8,970	17,040	142
MW-4	11/23/2004	98.61	18.04	NP	NP	80.57		1,330	3,710	1,660	6,660	13,360	158
MW-4	02/15/2005	98.61	17.88	NP	NP	80.73		1,260	4,280	1,880	8,970	16,390	131
MW-4	05/12/2005	98.61	17.68	NP	NP	80.93		Gauged Only					
MW-4	05/27/2005	98.61	Sampled Only					430	2,050	1,010	4,700	8,190	39.4
MW-4	09/07/2005	98.61	18.07	NP	NP	80.54		387	1,430	880	3,150	5,847	51.0
MW-4	11/15/2005	98.61	17.56	NP	NP	81.05		936	5,660	1,800	9,520	17,916	119

TABLE 1
GROUND WATER GAUGING AND ANALYTICAL DATA
 BP Station Number 03887
 164 4th Ave
 Brooklyn, NY

Well ID	Date	GROUND WATER GAUGING DATA						GROUND WATER ANALYTICAL DATA					
		Reference Elevation (ft)	Depth to Water (ft)	Depth to LNAPL (ft)	LNAPL Thickness (ft)	Water Elevation (ft)*	Purge Volume (gals)*	Benzene (µg/L)	Toluene (µg/L)	Ethyl-benzene (µg/L)	Xylenes (µg/L)	Total BTEX (µg/L)	MTBE (µg/L)
NYSDEC TOGS WQS		NGV	NGV	NGV	NGV	NGV	NGV	1	5	5	5	NGV	10
MW-4	02/15/2006	98.61	17.41	NP	NP	81.20		1,080	4,210	1,310	6,250	12,850	98.3
MW-4	06/06/2006	98.61	17.36	NP	NP	81.25		987	3,760	1,790	8,670	15,207	82.0
MW-4	08/28/2006	98.61	17.18	NP	NP	81.43		1,610	4,170	1,680	6,790	14,250	121
MW-4	11/27/2006	98.61	17.75	NP	NP	80.86		1,040	1,220	906	3,200	6,366	145
MW-4	02/17/2007	98.61	18.20	NP	NP	80.41		1,400	282	501	1,460	3,643	50.4
MW-4	05/11/2007	98.61	16.97	NP	NP	81.64		730	834	464	1,360	3,388	33.6
MW-4	08/30/2007	98.61	17.12	NP	NP	81.49		805	484	847	3,000	5,136	265
MW-4	11/21/2007	98.61	17.81	NP	NP	80.80		1,270	749	1,390	5,070	8,479	450
MW-4	02/25/2008	98.61	No Access					No Access					
MW-4	05/29/2008	98.61	17.96	NP	NP	80.65		1,100	66	390	1,400	2,956	53
MW-4	07/29/2008	98.61	17.65	NP	NP	80.96		250	8.9	80	110	449	14
MW-4	11/17/2008	98.61	18.08	NP	NP	80.53		560	54	610	1800	3,024	130
MW-4	01/14/2009	98.61	17.93	NP	NP	80.68		Gauged Only					
MW-4	02/06/2009	98.61	18.00	NP	NP	80.61		740	160	1,200	4,800	6,900	220
MW-4	03/05/2009	98.61	18.21	NP	NP	80.40		Gauged Only					
MW-4	04/01/2009	98.61	18.32	NP	NP	80.29		Gauged Only					
MW-4	05/18/2009	98.61	18.22	NP	NP	80.39		1,100	62	1,100	4,100	6,362	230
MW-4	06/30/2009	99.67	17.91	NP	NP	81.76		Gauged Only					
MW-4	07/30/2009	99.67	17.22	NP	NP	82.45		Gauged Only					

TABLE 1
GROUND WATER GAUGING AND ANALYTICAL DATA
 BP Station Number 03887
 164 4th Ave
 Brooklyn, NY

Well ID	Date	GROUND WATER GAUGING DATA						GROUND WATER ANALYTICAL DATA					
		Reference Elevation (ft)	Depth to Water (ft)	Depth to LNAPL (ft)	LNAPL Thickness (ft)	Water Elevation (ft)*	Purge Volume (gals)*	Benzene (µg/L)	Toluene (µg/L)	Ethyl-benzene (µg/L)	Xylenes (µg/L)	Total BTEX (µg/L)	MTBE (µg/L)
NYSDEC TOGS WQS		NGV	NGV	NGV	NGV	NGV	NGV	1	5	5	5	NGV	10
MW-4	08/06/2009	99.67	18.02	NP	NP	81.65		300	10	180	620	1,110	78
MW-4	09/03/2009	99.67	18.09	NP	NP	81.58		Gauged Only					
MW-4	10/13/2009	99.67	18.28	NP	NP	81.39		Gauged Only					
MW-4	11/23/2009	99.67	17.89	NP	NP	81.78		1,400	100	1,900	6,400	9,800	580
MW-4	12/08/2009	99.67	18.34	NP	NP	81.33		Gauged Only					
MW-4	01/31/2010	99.67	18.28	NP	NP	81.39		Gauged Only					
MW-4	02/09/2010	99.67	18.10	NP	NP	81.57		450	22	420	1,600	2,492	100
MW-4	03/15/2010	99.67	17.63	NP	NP	82.04		500	45	500	1,600	2,645	90
MW-4	04/08/2010	99.67	26.78	NP	NP	72.89		Gauged Only					
MW-4	05/19/2010	99.67	17.46	NP	NP	82.21		400	19	410	1,100	1,929	140
MW-4	06/02/2010	99.67	17.63	NP	NP	82.04		Gauged Only					
MW-4	07/12/2010	99.67	17.85	NP	NP	81.82		Gauged Only					
MW-4	08/18/2010	99.67	18.19	NP	NP	81.48		720	450	1,300	5,400	7,870	180
MW-4	11/01/2010	99.67	18.16	NP	NP	81.51		670	490	1,200	5,100	7,460	120
MW-4	02/14/2011	99.67	18.04	NP	NP	81.63		760	360	810	3,200	5,130	110
MW-4	06/17/2011	99.67	17.68	NP	NP	81.99	4.5**	640	390	790	3,100	4,920	160
MW-4	08/01/2011	99.67	18.10	NP	NP	81.57	4.25**	320	130	370	1,900	2,720	57
MW-4	11/01/2011	99.67	17.00	NP	NP	82.67	5.00	410	140	660	2,400	3,610	100
MW-4	02/14/2012	99.67	17.56	NP	NP	82.11	3.00	380	96	810	2,900	4,186	180

TABLE 1
GROUND WATER GAUGING AND ANALYTICAL DATA
 BP Station Number 03887
 164 4th Ave
 Brooklyn, NY

Well ID	Date	GROUND WATER GAUGING DATA						GROUND WATER ANALYTICAL DATA					
		Reference Elevation (ft)	Depth to Water (ft)	Depth to LNAPL (ft)	LNAPL Thickness (ft)	Water Elevation (ft)*	Purge Volume (gals)*	Benzene (µg/L)	Toluene (µg/L)	Ethylbenzene (µg/L)	Xylenes (µg/L)	Total BTEX (µg/L)	MTBE (µg/L)
NYSDEC TOGS WQS		NGV	NGV	NGV	NGV	NGV	NGV	1	5	5	5	NGV	10
MW-4	05/24/2012	99.67	18	NP	NP	81.67	4.50	540	18	510	1,900	2,968	72
MW-4	08/27/2012	99.67	18	NP	NP	81.67	4.00	830	42	1,500	4,800	7,172	180
MW-4	11/26/2012	99.67	18.3	NP	NP	81.37	4.00	330	7.5 J	390	1,300	2,028	88
MW-4	02/15/2013	99.67	17.45	NP	NP	82.22	4.00	730	19	870	3,000	4,619	130
MW-4	05/13/2013	99.67	18.54	NP	NP	81.13	5.00	490	9.3 J	550	1,000	2,049	190
MW-5	04/02/2001	98.90	21.90	NP	NP	77.00		1,380	277	351	410	2,418	5,040
MW-5	09/10/2001	98.90	21.73	NP	NP	77.17		105	16.8	22.9	37.3	182	4,980
MW-5	02/27/2002	98.90	22.05	NP	NP	76.85		2,650	110	497	264	3,521	46,800
MW-5	05/10/2002	98.90	21.99	NP	NP	76.91		1,950	457	542	793	3,742	17,600
MW-5	08/08/2002	98.90	21.83	NP	NP	77.07		1,320	202	449	679	2,650	8,410
MW-5	12/04/2002	98.90	21.48	NP	NP	77.42		2,250	290	407	656	3,603	26,300
MW-5	03/26/2003	98.90	21.14	NP	NP	77.76		3520	351	517	1,230	5,618	99,100
MW-5	05/15/2003	98.90	21.30	NP	NP	77.60		2,620	735	512	1,230	5,097	49,000
MW-5	09/04/2003	98.90	20.33	NP	NP	78.57		2,820	400	285	866	4,371	25,900
MW-5	12/17/2003	98.90	11.31	NP	NP	87.59		1,960	266	200	529	2,955	16,200
MW-5	02/11/2004	98.90	20.72	NP	NP	78.18		1,860	223	270	667	3,020	15,900
MW-5	05/18/2004	98.90	20.72	NP	NP	78.18		1,400	306	363	1,150	3,219	7,820
MW-5	08/18/2004	98.90	20.15	NP	NP	78.75		1,240	391	467	1,560	3,658	11,700

TABLE 1
GROUND WATER GAUGING AND ANALYTICAL DATA
 BP Station Number 03887
 164 4th Ave
 Brooklyn, NY

Well ID	Date	GROUND WATER GAUGING DATA						GROUND WATER ANALYTICAL DATA					
		Reference Elevation (ft)	Depth to Water (ft)	Depth to LNAPL (ft)	LNAPL Thickness (ft)	Water Elevation (ft)*	Purge Volume (gals)*	Benzene (µg/L)	Toluene (µg/L)	Ethylbenzene (µg/L)	Xylenes (µg/L)	Total BTEX (µg/L)	MTBE (µg/L)
NYSDEC TOGS WQS		NGV	NGV	NGV	NGV	NGV	NGV	1	5	5	5	NGV	10
MW-5	11/23/2004	98.90	20.58	NP	NP	78.32		2,280	110	322	811	3,523	21,900
MW-5	02/15/2005	98.90	20.65	NP	NP	78.25		2,000	53.8 J	122	313	2,489	22,500
MW-5	05/12/2005	98.90	19.68	NP	NP	79.22		Gauged Only					
MW-5	05/27/2005	98.90	Sampled Only					1,730	75.7	109	262	2,177	18,200
MW-5	09/07/2005	98.90	20.81	NP	NP	78.09		1,380	47.5	118	315	1,861	13,900
MW-5	11/15/2005	98.90	20.25	NP	NP	78.65		2,980	78.6	148	290	3,497	37,500
MW-5	02/15/2006	98.90	20.38	NP	NP	78.52		2,700	73.7	139	404	3,317	9,240
MW-5	06/06/2006	98.90	20.23	NP	NP	78.67		2,670	43.3	75.9	285	3,074	2,810
MW-5	08/28/2006	98.90	20.05	NP	NP	78.85		2,930	41.9	75.8	190	3,238	1,520
MW-5	11/27/2006	98.90	20.27	NP	NP	78.63		3,060	27.5	51.5	62.3	3,201	1,690
MW-5	02/17/2007	98.90	20.73	NP	NP	78.17		1,710	60.8	427	936	3,134	5,580
MW-5	05/11/2007	98.90	20.19	NP	NP	78.71		3,370	43.3	89.0	71.2	3,574	12,500
MW-5	08/30/2007	98.90	19.94	NP	NP	78.96		2,110	35.3 J	198	278	2,621	17,900
MW-5	11/21/2007	98.90	20.59	NP	NP	78.31		2,610	30.7	84.9	105	2,831	22,800
MW-5	02/25/2008	98.90	20.47	NP	NP	78.43		1,900	25	61	49	2,035	20,000
MW-5	05/29/2008	98.90	20.75	NP	NP	78.15		1,600	23	140	130	1,893	16,000
MW-5	07/29/2008	98.90	20.45	NP	NP	78.45		1,200	35	98	110	1,443	7,000
MW-5	11/17/2008	98.90	20.24	NP	NP	78.66		1,200	28	330	290	1,848	5,800
MW-5	01/14/2009	98.90	20.51	NP	NP	78.39		Gauged Only					

TABLE 1
GROUND WATER GAUGING AND ANALYTICAL DATA
 BP Station Number 03887
 164 4th Ave
 Brooklyn, NY

Well ID	Date	GROUND WATER GAUGING DATA						GROUND WATER ANALYTICAL DATA						
		Reference Elevation (ft)	Depth to Water (ft)	Depth to LNAPL (ft)	LNAPL Thickness (ft)	Water Elevation (ft)*	Purge Volume (gals)*	Benzene (µg/L)	Toluene (µg/L)	Ethyl-benzene (µg/L)	Xylenes (µg/L)	Total BTEX (µg/L)	MTBE (µg/L)	
NYSDEC TOGS WQS		NGV	NGV	NGV	NGV	NGV	NGV	1	5	5	5	NGV	10	
MW-5	02/06/2009	98.90	20.59	NP	NP	78.31		1,600	41	140	110	1,891	14,000	
MW-5	03/05/2009	98.90	20.76	NP	NP	78.14		Gauged Only						
MW-5	04/01/2009	98.90	20.77	NP	NP	78.13		Gauged Only						
MW-5	05/18/2009	98.90	20.59	NP	NP	78.31		1,000	17	83	76	1,176	2,400	
MW-5	06/30/2009	100.02	19.46	NP	NP	80.56		Gauged Only						
MW-5	07/30/2009	100.02	19.84	NP	NP	80.18		Gauged Only						
MW-5	08/06/2009	100.02	20.26	NP	NP	79.76		820	15	37	36	908	1,600	
MW-5	09/03/2009	100.02	No Access						Gauged Only					
MW-5	10/13/2009	100.02	20.52	NP	NP	79.50		Gauged Only						
MW-5	11/23/2009	100.02	20.71	NP	NP	79.31		630	22	180	98	930	1,600	
MW-5	12/08/2009	100.02	20.80	NP	NP	79.22		Gauged Only						
MW-5	01/31/2010	100.02	Not Gauged - Car parked Over Well						Gauged Only					
MW-5	02/09/2010	100.02	20.79	NP	NP	79.23		460	21	150	79	710	1,200	
MW-5	03/15/2010	100.02	20.13	NP	NP	79.89		510	16	44	24	594	2,100	
MW-5	04/08/2010	100.02	29.23	NP	NP	70.79		Gauged Only						
MW-5	05/19/2010	100.02	20.33	NP	NP	79.69		730	25	200	140	1,095	6400	
MW-5	06/02/2010	100.02	20.48	NP	NP	79.54		Gauged Only						
MW-5	07/12/2010	100.02	20.67	NP	NP	79.35		Gauged Only						
MW-5	08/18/2010	100.02	20.94	NP	NP	79.08		990	38	260	210	1,498	3,400	

TABLE 1
GROUND WATER GAUGING AND ANALYTICAL DATA
 BP Station Number 03887
 164 4th Ave
 Brooklyn, NY

Well ID	Date	GROUND WATER GAUGING DATA						GROUND WATER ANALYTICAL DATA					
		Reference Elevation (ft)	Depth to Water (ft)	Depth to LNAPL (ft)	LNAPL Thickness (ft)	Water Elevation (ft)*	Purge Volume (gals)*	Benzene (µg/L)	Toluene (µg/L)	Ethyl-benzene (µg/L)	Xylenes (µg/L)	Total BTEX (µg/L)	MTBE (µg/L)
NYSDEC TOGS WQS		NGV	NGV	NGV	NGV	NGV	NGV	1	5	5	5	NGV	10
MW-5	11/01/2010	100.02	20.74	NP	NP	79.28		780	37	230	150	1,197	2,400
MW-5	02/14/2011	100.02	20.53	NP	NP	79.49		930	58	110	91	1,189	4,500
MW-5	06/17/2011	100.02	20.61	NP	NP	79.41	4.25**	800	49	160	120	1,129	1,400
MW-5	08/01/2011	100.02	20.81	NP	NP	79.21	4.00**	770	51	140	130	1,091	1,700
MW-5	11/01/2011	100.02	20.11	NP	NP	79.91	4.50	840	37	65	77	1,019	2,000
MW-5	02/14/2012	100.02	20.91	NP	NP	79.11	4.00	1,000	43	110	100	1,253	1400
MW-5	05/24/2012	100.02	21.04	NP	NP	78.98	4.00	570	18	28	41	657	1,000
MW-5	08/27/2012	100.02	20.35	NP	NP	79.67	4.25	560	17	28	36	641	790
MW-5	11/26/2012	100.02	20.87	NP	NP	79.15	4.00	1,100	48	130	120	1,398	1,300
MW-5	02/15/2013	100.02	21.85	NP	NP	78.17	4.00	1,200	42	92	140	1,474	780
MW-5	05/13/2013	100.02	21.09	NP	NP	78.93	4.00	1,200	76	230	270	1,776	1,200
MW-6	03/26/2003	98.69	20.54	NP	NP	78.15		89.6	182	37.9	154	464	9,400
MW-6	05/15/2003	98.69	20.59	NP	NP	78.10		91.1	213	54.0	248	606	10,100
MW-6	09/04/2003	98.69	19.68	NP	NP	79.01		1,480	1,390	631	2,040	5,541	386,000
MW-6	12/17/2003	98.69	19.74	NP	NP	78.95		217	50.4	46.3J	123	437	63,500
MW-6	02/11/2004	98.69	20.09	NP	NP	78.60		168	53.9	55.1	170	447	34,100
MW-6	05/18/2004	98.69	20.13	NP	NP	78.56		74.5	6.9	14.4	48.2	144	2,490
MW-6	08/18/2004	98.69	19.42	NP	NP	79.27		252	328	81.3 J	275	936	38,500

TABLE 1
GROUND WATER GAUGING AND ANALYTICAL DATA
 BP Station Number 03887
 164 4th Ave
 Brooklyn, NY

Well ID	Date	GROUND WATER GAUGING DATA						GROUND WATER ANALYTICAL DATA					
		Reference Elevation (ft)	Depth to Water (ft)	Depth to LNAPL (ft)	LNAPL Thickness (ft)	Water Elevation (ft)*	Purge Volume (gals)*	Benzene (µg/L)	Toluene (µg/L)	Ethyl-benzene (µg/L)	Xylenes (µg/L)	Total BTEX (µg/L)	MTBE (µg/L)
NYSDEC TOGS WQS		NGV	NGV	NGV	NGV	NGV	NGV	1	5	5	5	NGV	10
MW-6	11/23/2004	98.69	20.04	NP	NP	78.65		56.7	4.6 J	6.3	26.5	94.1	1,730
MW-6	02/15/2005	98.69	20.12	NP	NP	78.57		35.0	6.1 J	3.2 J	20.0	64.3	1,160
MW-6	05/12/2005	98.69	20.08	NP	NP	78.61		Gauged Only					
MW-6	05/27/2005	98.69	Sampled Only					23.5	3.0	2.4	14.0	42.9	899
MW-6	09/07/2005	98.69	20.26	NP	NP	78.43		9.9	1.6 J	7.2	11.8	30.5	795
MW-6	11/15/2005	98.69	19.73	NP	NP	78.96		303	60.5 J	35.9 J	81.1 J	481	298,000
MW-6	02/15/2006	98.69	19.79	NP	NP	78.90		1,130	526	342	1,010	3,008	131,000
MW-6	06/06/2006	98.69	19.64	NP	NP	79.05		1,610	268	410	1,060	3,348	133,000
MW-6	08/28/2006	98.69	19.45	NP	NP	79.24		1,590	165	499	1,350	3,604	109,000
MW-6	11/27/2006	98.69	19.82	NP	NP	78.87		20.7	4.0	7.6	22.9	55.2	791
MW-6	02/17/2007	98.69	20.28	NP	NP	78.41		21.7	4.6 J	9.1	23.4	58.8	1,120
MW-6	05/11/2007	98.69	19.68	NP	NP	79.01		16.1	2.4	1.5	8.2	28.2	108
MW-6	08/30/2007	98.69	19.42	NP	NP	79.27		11.6	5.0	10.4	15.2	42.2	1,280
MW-6	11/21/2007	98.69	20.11	NP	NP	78.58		7.9	3.9	5.3	10.6	27.7	124
MW-6	02/25/2008	98.69	20.85	NP	NP	77.84		24	5.6	9.0	23	61.6	5,000
MW-6	05/29/2008	98.69	20.25	NP	NP	78.44		13	3.6	8.4	16	41.0	210
MW-6	07/29/2008	98.69	19.92	NP	NP	78.77		550	87	170	250	1,057	72,000
MW-6	11/17/2008	98.69	20.07	NP	NP	78.62		31	6.8	34	29	101	760
MW-6	01/14/2009	98.69	19.97	NP	NP	78.72		Gauged Only					

TABLE 1
GROUND WATER GAUGING AND ANALYTICAL DATA
 BP Station Number 03887
 164 4th Ave
 Brooklyn, NY

Well ID	Date	GROUND WATER GAUGING DATA						GROUND WATER ANALYTICAL DATA					
		Reference Elevation (ft)	Depth to Water (ft)	Depth to LNAPL (ft)	LNAPL Thickness (ft)	Water Elevation (ft)*	Purge Volume (gals)*	Benzene (µg/L)	Toluene (µg/L)	Ethyl-benzene (µg/L)	Xylenes (µg/L)	Total BTEX (µg/L)	MTBE (µg/L)
NYSDEC TOGS WQS		NGV	NGV	NGV	NGV	NGV	NGV	1	5	5	5	NGV	10
MW-6	02/06/2009	98.69	20.00	NP	NP	78.69		160	19 J	47	53	279	29,000
MW-6	03/05/2009	98.69	20.17	NP	NP	78.52		Gauged Only					
MW-6	04/01/2009	98.69	20.21	NP	NP	78.48		Gauged Only					
MW-6	05/18/2009	98.69	20.12	NP	NP	78.57		34	4.5	13	16	67.5	230
MW-6	06/30/2009	99.82	19.74	NP	NP	80.08		Gauged Only					
MW-6	07/30/2009	99.82	19.73	NP	NP	80.09		Gauged Only					
MW-6	08/06/2009	99.82	19.82	NP	NP	80.00		12	3.4	6.4	8.5	30.3	92
MW-6	09/03/2009	99.82	20.00	NP	NP	79.82		Gauged Only					
MW-6	10/13/2009	99.82	20.12	NP	NP	79.70		Gauged Only					
MW-6	11/23/2009	99.82	20.21	NP	NP	79.61		20	5.2	15	19	59.2	84
MW-6	12/08/2009	99.82	20.31	NP	NP	79.51		Gauged Only					
MW-6	01/31/2010	99.82	20.29	NP	NP	79.53		Gauged Only					
MW-6	02/09/2010	99.82	20.32	NP	NP	79.50		15	4.1	6	15	40.1	87
MW-6	03/15/2010	99.82	19.73	NP	NP	80.09		90	<10	21	23	134	20,000
MW-6	04/08/2010	99.82	24.50	NP	NP	75.32		Gauged Only					
MW-6	05/19/2010	99.82	19.88	NP	NP	79.94		21	3.9	9	11	44.9	590
MW-6	06/02/2010	99.82	19.98	NP	NP	79.84		Gauged Only					
MW-6	07/12/2010	99.82	20.19	NP	NP	79.63		Gauged Only					
MW-6	08/18/2010	99.82	20.43	NP	NP	79.39		17	2.6	5.3	6.1	31.0	43

TABLE 1
GROUND WATER GAUGING AND ANALYTICAL DATA
 BP Station Number 03887
 164 4th Ave
 Brooklyn, NY

Well ID	Date	GROUND WATER GAUGING DATA						GROUND WATER ANALYTICAL DATA					
		Reference Elevation (ft)	Depth to Water (ft)	Depth to LNAPL (ft)	LNAPL Thickness (ft)	Water Elevation (ft)*	Purge Volume (gals)*	Benzene (µg/L)	Toluene (µg/L)	Ethylbenzene (µg/L)	Xylenes (µg/L)	Total BTEX (µg/L)	MTBE (µg/L)
		NGV	NGV	NGV	NGV	NGV	NGV	1	5	5	5	NGV	10
MW-6	11/01/2010	99.82	20.25	NP	NP	79.57		17	2.1	2.8	4.6	26.5	160
MW-6	02/14/2011	99.82	20.11	NP	NP	79.71		330	21	110	85	546	22,000
MW-6	06/17/2011	99.82	20.14	NP	NP	79.68	2.25**	10	1.5	3.8	3	18.3	33
MW-6	08/01/2011	99.82	20.37	NP	NP	79.45	2.00**	12	2.2	6	4.3	24.5	21
MW-6	11/01/2011	99.82	19.60	NP	NP	80.22	2.50	180	14	73	70	337	9,000
MW-6	02/14/2012	99.82	20.34	NP	NP	79.48	2.00	11	2.1	6.4	5.6	25.1	25
MW-6	05/24/2012	99.82	20.46	NP	NP	79.36	2.00	9.6	2.2	3.2	3	18.0	21
MW-6	08/27/2012	99.82	19.95	NP	NP	79.87	2.25	140	12	47	23	222	4,700
MW-6	11/26/2012	99.82	20.3	NP	NP	79.52	2.00	520	44	300	240	1,104	15,000
MW-6	02/15/2013	99.82	20.47	NP	NP	79.35	2.00	650	62	400	420	1,532	12,000
MW-6	05/13/2013	99.82	20.41	NP	NP	79.41	2.00	510	59	350	380	1,299	4,900
MW-7	03/26/2003	98.55	19.04	NP	NP	79.51		192	8.7	10.8	29.7	241	23,300
MW-7	05/15/2003	98.55	19.07	NP	NP	79.48		127	<50.0	<50.0	71.7	199	38,200
MW-7	09/04/2003	98.55	18.03	NP	NP	80.52		383	<100	<100	184	567	18,400
MW-7	12/17/2003	98.55	18.58	NP	NP	79.97		68.4	<25	<25	46.5	115	27,600
MW-7	02/11/2004	98.55	18.80	NP	NP	79.75		64.0	<50	<50	56.3	120	12,900
MW-7	05/18/2004	98.55	18.51	NP	NP	80.04		89.7	5.7 J	12.6	42.6	151	9,850
MW-7	08/18/2004	98.55	17.76	NP	NP	80.79		89.4	6.2 J	14.8	32.1	143	10,500

TABLE 1
GROUND WATER GAUGING AND ANALYTICAL DATA
 BP Station Number 03887
 164 4th Ave
 Brooklyn, NY

Well ID	Date	GROUND WATER GAUGING DATA						GROUND WATER ANALYTICAL DATA					
		Reference Elevation (ft)	Depth to Water (ft)	Depth to LNAPL (ft)	LNAPL Thickness (ft)	Water Elevation (ft)*	Purge Volume (gals)*	Benzene (µg/L)	Toluene (µg/L)	Ethyl-benzene (µg/L)	Xylenes (µg/L)	Total BTEX (µg/L)	MTBE (µg/L)
NYSDEC TOGS WQS		NGV	NGV	NGV	NGV	NGV	NGV	1	5	5	5	NGV	10
MW-7	11/23/2004	98.55	18.06	NP	NP	80.49		66.6	5.5	12.7	27.7	113	13,500
MW-7	02/15/2005	98.55	17.87	NP	NP	80.68		73.5	6.3 J	12.2 J	19.0 J	111	11,100
MW-7	05/12/2005	98.55	17.69	NP	NP	80.86		Gauged Only					
MW-7	05/27/2005	98.55	Sampled Only					130	<10.0	15.5	16.5	162	8,620
MW-7	09/07/2005	98.55	18.05	NP	NP	80.50		61.7	<20.0	16.7 J	20.3	98.7	9,630
MW-7	11/15/2005	98.55	17.52	NP	NP	81.03		88.7	7.1	17.9	21.0	135	13,700
MW-7	02/15/2006	98.55	17.43	NP	NP	81.12		42.1	<25.0	11.2 J	13.5 J	66.8	9,190
MW-7	06/06/2006	98.55	17.36	NP	NP	81.19		38.2	<25.0	<25.0	<25.0	38.2	7,450
MW-7	08/28/2006	98.55	17.19	NP	NP	81.36		113	6.5	15.6	17.3	152	8,190
MW-7	11/27/2006	98.55	17.73	NP	NP	80.82		6.0	2.9	2.4	7.5	18.8	580
MW-7	02/17/2007	98.55	18.18	NP	NP	80.37		4.1 J	1.9 J	1.5 J	4.8 J	12.3	1,120
MW-7	05/11/2007	98.55	17.01	NP	NP	81.54		270	7.6	22.4	23.4	323	1,330
MW-7	08/30/2007	98.55	17.15	NP	NP	81.40		174	7.1	18.3	22.0	221	680
MW-7	11/21/2007	98.55	17.82	NP	NP	80.73		100	5.2	11.9	15.6	133	508
MW-7	02/25/2008	98.55	17.69	NP	NP	80.86		33	4.3	7.4	13	57.7	250
MW-7	05/29/2008	98.55	17.94	NP	NP	80.61		34	4.2	7.7	13	58.9	670
MW-7	07/29/2008	98.55	17.75	NP	NP	80.80		80	5.2	13	17	115	600
MW-7	11/17/2008	98.55	17.89	NP	NP	80.66		1.4 J	1.2 J	<1.0	2.8	5.4	720
MW-7	01/14/2009	98.55	17.91	NP	NP	80.64		Gauged Only					

TABLE 1
GROUND WATER GAUGING AND ANALYTICAL DATA
 BP Station Number 03887
 164 4th Ave
 Brooklyn, NY

Well ID	Date	GROUND WATER GAUGING DATA						GROUND WATER ANALYTICAL DATA					
		Reference Elevation (ft)	Depth to Water (ft)	Depth to LNAPL (ft)	LNAPL Thickness (ft)	Water Elevation (ft)*	Purge Volume (gals)*	Benzene (µg/L)	Toluene (µg/L)	Ethyl-benzene (µg/L)	Xylenes (µg/L)	Total BTEX (µg/L)	MTBE (µg/L)
NYSDEC TOGS WQS		NGV	NGV	NGV	NGV	NGV	NGV	1	5	5	5	NGV	10
MW-7	02/06/2009	98.55	18.00	NP	NP	80.55		28	4.2	8.7	13	53.9	170
MW-7	03/05/2009	98.55	18.20	NP	NP	80.35		Gauged Only					
MW-7	04/01/2009	98.55	18.33	NP	NP	80.22		Gauged Only					
MW-7	05/18/2009	98.55	18.23	NP	NP	80.32		80	4.7	8	13	106	140
MW-7	06/30/2009	99.64	17.91	NP	NP	81.73		Gauged Only					
MW-7	07/30/2009	99.64	17.13	NP	NP	82.51		Gauged Only					
MW-7	08/06/2009	99.64	18.03	NP	NP	81.61		120	4.8	6.9	14	146	140
MW-7	09/03/2009	99.64	16.11	NP	NP	83.53		Gauged Only					
MW-7	10/13/2009	99.64	18.30	NP	NP	81.34		Gauged Only					
MW-7	11/23/2009	99.64	18.41	NP	NP	81.23		28	2.4	1.9	7.1	39.4	140
MW-7	12/08/2009	99.64	18.37	NP	NP	81.27		Gauged Only					
MW-7	01/31/2010	99.64	18.30	NP	NP	81.34		Gauged Only					
MW-7	02/09/2010	99.64	18.32	NP	NP	81.32		26	2	1.2	4.4	33.6	140
MW-7	03/15/2010	99.64	17.65	NP	NP	81.99		200	3.8	6.2	9.9	220	210
MW-7	04/08/2010	99.64	24.07	NP	NP	75.57		Gauged Only					
MW-7	05/19/2010	99.64	17.49	NP	NP	82.15		270	5.6	13	16	305	96
MW-7	06/02/2010	99.64	17.36	NP	NP	82.28		Gauged Only					
MW-7	07/12/2010	99.64	17.87	NP	NP	81.77		Gauged Only					
MW-7	08/18/2010	99.64	18.19	NP	NP	81.45		79	4.8	7.7	15	107	120

TABLE 1
GROUND WATER GAUGING AND ANALYTICAL DATA
 BP Station Number 03887
 164 4th Ave
 Brooklyn, NY

Well ID	Date	GROUND WATER GAUGING DATA						GROUND WATER ANALYTICAL DATA					
		Reference Elevation (ft)	Depth to Water (ft)	Depth to LNAPL (ft)	LNAPL Thickness (ft)	Water Elevation (ft)*	Purge Volume (gals)*	Benzene (µg/L)	Toluene (µg/L)	Ethylbenzene (µg/L)	Xylenes (µg/L)	Total BTEX (µg/L)	MTBE (µg/L)
NYSDEC TOGS WQS		NGV	NGV	NGV	NGV	NGV	NGV	1	5	5	5	NGV	10
MW-7	11/01/2010	99.64	18.20	NP	NP	81.44		96	5.3	9.7	15	126	77
MW-7	02/14/2011	99.64	18.07	NP	NP	81.57		65	3.9	7.2	11	87.1	73
MW-7	06/17/2011	99.64	17.71	NP	NP	81.93	3.00**	21	3.9	7.1	10	42.0	73
MW-7	08/01/2011	99.64	18.10	NP	NP	81.54	3.00**	22	3.6	6.1	9.3	41.0	93
MW-7	11/01/2011	99.64	17.01	NP	NP	82.63	3.50	120	5.5	12	15	153	59
MW-7	02/14/2012	99.64	17.59	NP	NP	82.05	3.00	47	5.5	10	14	76.5	64
MW-7	05/24/2012	99.64	18.02	NP	NP	81.62	3.00	7.1	3.5	4.7	9.8	25.1	53
MW-7	08/27/2012	99.64	18.05	NP	NP	81.59	3.00	91	5.8	10	17	124	64
MW-7	11/26/2012	99.64	18.3	NP	NP	81.34	3.00	37	5.2	11	15	68.2	64
MW-7	02/15/2013	99.64	17.5	NP	NP	82.14	3.00	38	4.6 J	10	9.3	61.9	81
MW-7	05/13/2013	99.64	16.29	NP	NP	83.35	3.75	310	6.3	21	17	354	99
MW-8	12/17/2003	98.76	16.03	NP	NP	82.73		<1.0	<1.0	<1.0	<1.0	ND	2.1
MW-8	02/11/2004	96.08	17.01	NP	NP	79.07		0.58 J	0.44 J	2.6	11.2	14.8	10.7
MW-8	05/18/2004	96.08	17.12	NP	NP	78.96		<1.0	<1.0	<1.0	<1.0	ND	10.7
MW-8	08/18/2004	96.08	16.66	NP	NP	79.42		<1.0	<1.0	<1.0	<1.0	ND	15.6
MW-8	11/23/2004	96.08	16.98	NP	NP	79.10		<1.0	<1.0	<1.0	0.3 J	0.3	20.4
MW-8	02/15/2005	96.08	16.90	NP	NP	79.18		<1.0	<1.0	<1.0	<1.0	ND	20.7
MW-8	05/12/2005	96.08	16.66	NP	NP	79.42		Gauged Only					

TABLE 1
GROUND WATER GAUGING AND ANALYTICAL DATA
 BP Station Number 03887
 164 4th Ave
 Brooklyn, NY

Well ID	Date	GROUND WATER GAUGING DATA						GROUND WATER ANALYTICAL DATA					
		Reference Elevation (ft)	Depth to Water (ft)	Depth to LNAPL (ft)	LNAPL Thickness (ft)	Water Elevation (ft)*	Purge Volume (gals)*	Benzene (µg/L)	Toluene (µg/L)	Ethylbenzene (µg/L)	Xylenes (µg/L)	Total BTEX (µg/L)	MTBE (µg/L)
NYSDEC TOGS WQS		NGV	NGV	NGV	NGV	NGV	NGV	1	5	5	5	NGV	10
MW-8	05/27/2005	96.08	Sampled Only					<1.0	<1.0	<1.0	<1.0	ND	21.6
MW-8	09/07/2005	96.08	16.51	NP	NP	79.57		<1.0	<1.0	<1.0	<1.0	ND	15.9
MW-8	11/15/2005	96.08	13.35	NP	NP	82.73		<1.0	<1.0	<1.0	<1.0	ND	<1.0
MW-8	02/15/2006	96.08	13.50	NP	NP	82.58		<1.0	<1.0	<1.0	<1.0	ND	0.70 J
MW-8	06/06/2006	96.08	13.98	NP	NP	82.10		<1.0	<1.0	<1.0	<1.0	ND	<1.0
MW-8	08/28/2006	96.08	14.14	NP	NP	81.94		<1.0	<1.0	<1.0	<1.0	ND	<1.0
MW-8	11/27/2006	96.08	16.78	NP	NP	79.30		<1.0	<1.0	<1.0	<1.0	ND	10.4
MW-8	02/17/2007	96.08	17.24	NP	NP	78.84		<1.0	<1.0	<1.0	<1.0	ND	8.1
MW-8	05/11/2007	96.08	16.48	NP	NP	79.60		<1.0	<1.0	<1.0	<1.0	ND	6.5
MW-8	08/30/2007	96.08	16.31	NP	NP	79.77		<1.0	<1.0	<1.0	<1.0	ND	5.3
MW-8	11/21/2007	96.08	16.92	NP	NP	79.16		<1.0	<1.0	<1.0	<1.0	ND	4.6
MW-8	02/25/2008	96.08	16.54	NP	NP	79.54		<0.50	<0.50	1.7	1.8	3.5	3.3
MW-8	05/29/2008	96.08	16.91	NP	NP	79.17		<0.50	<0.50	<0.50	<0.50	ND	3.5
MW-8	07/29/2008	96.08	16.64	NP	NP	79.44		0.65 J	<0.50	<0.50	<0.50	0.65	3.3
MW-8	11/17/2008	96.08	16.36	NP	NP	79.72		<0.50	<0.50	<0.50	<0.50	ND	<0.50
MW-8	01/14/2009	96.08	16.43	NP	NP	79.65		Gauged Only					
MW-8	02/06/2009	96.08	14.14	NP	NP	81.94		<0.50	8.4	2.2	11	21.6	<0.50
MW-8	03/05/2009	96.08	12.87	NP	NP	83.21		Gauged Only					
MW-8	04/01/2009	96.08	12.72	NP	NP	83.36		Gauged Only					

TABLE 1
GROUND WATER GAUGING AND ANALYTICAL DATA
 BP Station Number 03887
 164 4th Ave
 Brooklyn, NY

Well ID	Date	GROUND WATER GAUGING DATA						GROUND WATER ANALYTICAL DATA					
		Reference Elevation (ft)	Depth to Water (ft)	Depth to LNAPL (ft)	LNAPL Thickness (ft)	Water Elevation (ft)*	Purge Volume (gals)*	Benzene (µg/L)	Toluene (µg/L)	Ethyl-benzene (µg/L)	Xylenes (µg/L)	Total BTEX (µg/L)	MTBE (µg/L)
NYSDEC TOGS WQS		NGV	NGV	NGV	NGV	NGV	NGV	1	5	5	5	NGV	10
MW-8	05/18/2009	96.08	16.41	NP	NP	79.67		<0.50	0.51 J	1.7	3	5.21	0.97 J
MW-8	06/30/2009	97.21	16.12	NP	NP	81.09		Gauged Only					
MW-8	07/30/2009	97.21	16.45	NP	NP	80.76		Gauged Only					
MW-8	08/06/2009	97.21	16.30	NP	NP	80.91		<0.50	<0.50	<0.50	<0.50	ND	2.1
MW-8	09/03/2009	97.21	16.76	NP	NP	80.45		Gauged Only					
MW-8	10/13/2009	97.21	17.06	NP	NP	80.15		Gauged Only					
MW-8	11/23/2009	97.21	16.88	NP	NP	80.33		<0.50	<0.50	3.8	4.7	8.5	3.3
MW-8	12/08/2009	97.21	16.83	NP	NP	80.38		Gauged Only					
MW-8	01/31/2010	97.21	17.03	NP	NP	80.18		Gauged Only					
MW-8	02/09/2010	97.21	13.62	NP	NP	83.59		<0.50	<0.50	<0.50	<0.50	ND	4.5
MW-8	03/15/2010	97.21	14.22	NP	NP	82.99		<0.50	<0.50	<0.50	<0.50	ND	1.7
MW-8	04/08/2010	97.21	20.46	NP	NP	76.75		Gauged Only					
MW-8	05/19/2010	97.21	16.40	NP	NP	80.81		<0.50	<0.50	<0.50	<0.50	ND	7
MW-8	06/02/2010	97.21	16.78	NP	NP	80.43		Gauged Only					
MW-8	07/12/2010	97.21	15.62	NP	NP	81.59		Gauged Only					
MW-8	08/18/2010	97.21	17.19	NP	NP	80.02		<0.50	<0.50	<0.50	<0.50	ND	6.6
MW-8	11/01/2010	97.21	16.91	NP	NP	80.30		<0.50	<0.50	<0.50	<0.50	ND	3.8
MW-8	02/14/2011	97.21	16.57	NP	NP	80.64		<0.50	<0.50	<0.50	<0.50	ND	2.4
MW-8	06/17/2011	97.21	16.67	NP	NP	80.54	2.00**	<0.50	<0.50	<0.50	<0.50	ND	4.5

TABLE 1
GROUND WATER GAUGING AND ANALYTICAL DATA
 BP Station Number 03887
 164 4th Ave
 Brooklyn, NY

Well ID	Date	GROUND WATER GAUGING DATA						GROUND WATER ANALYTICAL DATA					
		Reference Elevation (ft)	Depth to Water (ft)	Depth to LNAPL (ft)	LNAPL Thickness (ft)	Water Elevation (ft)*	Purge Volume (gals)*	Benzene (µg/L)	Toluene (µg/L)	Ethyl-benzene (µg/L)	Xylenes (µg/L)	Total BTEX (µg/L)	MTBE (µg/L)
NYSDEC TOGS WQS		NGV	NGV	NGV	NGV	NGV	NGV	1	5	5	5	NGV	10
MW-8	08/01/2011	97.21	17.04	NP	NP	80.17	1.75**	<0.50	<0.50	<0.50	<0.50	ND	5
MW-8	11/01/2011	97.21	15.11	NP	NP	82.10	2.50	<0.50	<0.50	<0.50	<0.50	ND	2.3
MW-8	02/14/2012	97.21	16.75	NP	NP	80.46	1.75	<0.50	<0.50	<0.50	<0.50	ND	4.3
MW-8	05/24/2012	97.21	16.4	NP	NP	80.81	4.00	<0.50	<0.50	<0.50	<0.50	ND	2.4
MW-8	08/27/2012	97.21	16.2	NP	NP	81.01	2.00	<0.50	<0.50	<0.50	<0.50	ND	<0.50
MW-8	11/26/2012	97.21	13.52	NP	NP	83.69	3.50	<0.50	<0.50	<0.50	<0.50	ND	<0.50
MW-8	02/15/2013	97.21	12.63	NP	NP	84.58	4.00	<0.50	<0.50	<0.50	<0.50	ND	<0.50
MW-8	05/13/2013	97.21	12.94	NP	NP	84.27	3.75	<0.50	<0.50	<0.50	3.6	3.6	<0.50
MW-9	12/17/2003	97.6	16.17	NP	NP	81.43		<1.0	<1.0	<1.0	0.93J	0.93	7.5
MW-9	02/11/2004	94.95	16.63	NP	NP	78.32		<1.0	<1.0	0.4 J	1.2	1.6	6.7
MW-9	05/18/2004	94.95	16.67	NP	NP	78.28		<1.0	<1.0	<1.0	<1.0	ND	7.8
MW-9	08/18/2004	94.95	16.26	NP	NP	78.69		<1.0	<1.0	<1.0	<1.0	ND	6.4
MW-9	11/23/2004	94.95	16.59	NP	NP	78.36		<1.0	<1.0	<1.0	<1.0	ND	7.9
MW-9	02/15/2005	94.95	16.62	NP	NP	78.33		<1.0	<1.0	<1.0	<1.0	ND	6.2
MW-9	05/12/2005	94.95	16.56	NP	NP	78.39		Gauged Only					
MW-9	05/27/2005	94.95	Sampled Only					<1.0	<1.0	<1.0	<1.0	ND	7.4
MW-9	09/07/2005	94.95	16.65	NP	NP	78.30		<1.0	<1.0	<1.0	<1.0	ND	7.4
MW-9	11/15/2005	94.95	15.68	NP	NP	79.27		<1.0	0.50 J	1.3	5.8	7.6	5.5

TABLE 1
GROUND WATER GAUGING AND ANALYTICAL DATA
 BP Station Number 03887
 164 4th Ave
 Brooklyn, NY

Well ID	Date	GROUND WATER GAUGING DATA						GROUND WATER ANALYTICAL DATA					
		Reference Elevation (ft)	Depth to Water (ft)	Depth to LNAPL (ft)	LNAPL Thickness (ft)	Water Elevation (ft)*	Purge Volume (gals)*	Benzene (µg/L)	Toluene (µg/L)	Ethylbenzene (µg/L)	Xylenes (µg/L)	Total BTEX (µg/L)	MTBE (µg/L)
NYSDEC TOGS WQS		NGV	NGV	NGV	NGV	NGV	NGV	1	5	5	5	NGV	10
MW-9	02/15/2006	94.95	15.77	NP	NP	79.18		<1.0	<1.0	<1.0	<1.0	ND	1.7
MW-9	06/06/2006	94.95	15.76	NP	NP	79.19		<1.0	<1.0	<1.0	<1.0	ND	1.1
MW-9	08/28/2006	94.95	15.50	NP	NP	79.45		<1.0	<1.0	0.43 J	1.6	2.03	1.0
MW-9	11/27/2006	94.95	16.25	NP	NP	78.70		<1.0	<1.0	<1.0	<1.0	ND	1.3
MW-9	02/17/2007	94.95	16.70	NP	NP	78.25		<1.0	<1.0	<1.0	<1.0	ND	1.3
MW-9	05/11/2007	94.95	16.15	NP	NP	78.80		16.2	2.5	2.5	9.5	30.7	315
MW-9	08/30/2007	94.95	15.99	NP	NP	78.96		<1.0	<1.0	<1.0	<1.0	ND	2.5
MW-9	11/21/2007	94.95	16.58	NP	NP	78.37		<1.0	<1.0	<1.0	<1.0	ND	2.4
MW-9	02/25/2008	94.95	16.31	NP	NP	78.64		<0.50	<0.50	<0.50	0.70 J	0.7	3.3
MW-9	05/29/2008	94.95	16.64	NP	NP	78.31		<0.50	<0.50	<0.50	<0.50	ND	2.8
MW-9	07/29/2008	94.95	16.35	NP	NP	78.60		<0.50	<0.50	<0.50	<0.50	ND	2.9
MW-9	11/17/2008	94.95	16.50	NP	NP	78.45		0.56 J	<0.50	<0.50	<0.50	0.56	2.9
MW-9	01/14/2009	94.95	15.84	NP	NP	79.11		Gauged Only					
MW-9	02/06/2009	94.95	16.05	NP	NP	78.90		0.54 J	<0.50	<0.50	<0.50	0.54	2.5
MW-9	03/05/2009	94.95	16.19	NP	NP	78.76		Gauged Only					
MW-9	04/01/2009	94.95	16.24	NP	NP	78.71		Gauged Only					
MW-9	05/18/2009	94.95	16.52	NP	NP	78.43		0.92 J	<0.50	<0.50	0.53 J	1.45	2
MW-9	06/30/2009	96.00	16.18	NP	NP	79.82		Gauged Only					
MW-9	07/30/2009	96.00	16.13	NP	NP	79.87		Gauged Only					

TABLE 1
GROUND WATER GAUGING AND ANALYTICAL DATA
 BP Station Number 03887
 164 4th Ave
 Brooklyn, NY

Well ID	Date	GROUND WATER GAUGING DATA						GROUND WATER ANALYTICAL DATA					
		Reference Elevation (ft)	Depth to Water (ft)	Depth to LNAPL (ft)	LNAPL Thickness (ft)	Water Elevation (ft)*	Purge Volume (gals)*	Benzene (µg/L)	Toluene (µg/L)	Ethyl-benzene (µg/L)	Xylenes (µg/L)	Total BTEX (µg/L)	MTBE (µg/L)
NYSDEC TOGS WQS		NGV	NGV	NGV	NGV	NGV	NGV	1	5	5	5	NGV	10
MW-9	08/06/2009	96.00	16.26	NP	NP	79.74		0.61 J	<0.50	<0.50	0.76 J	1.37	1.5
MW-9	09/03/2009	96.00	16.41	NP	NP	79.59		Gauged Only					
MW-9	10/13/2009	96.00	16.50	NP	NP	79.50		Gauged Only					
MW-9	11/23/2009	96.00	16.59	NP	NP	79.41		0.52 J	<0.50	<0.50	<0.50	0.52	1.7
MW-9	12/08/2009	96.00	16.72	NP	NP	79.28		Gauged Only					
MW-9	01/31/2010	96.00	16.66	NP	NP	79.34		Gauged Only					
MW-9	02/09/2010	96.00	16.78	NP	NP	79.22		<0.50	<0.50	<0.50	<0.50	ND	1.5
MW-9	03/15/2010	96.00	15.87	NP	NP	80.13		<0.50	<0.50	<0.50	<0.50	ND	1.6
MW-9	04/08/2010	96.00	22.39	NP	NP	73.61		Gauged Only					
MW-9	05/19/2010	96.00	16.33	NP	NP	79.67		<0.50	<0.50	<0.50	<0.50	ND	1.8
MW-9	06/02/2010	96.00	16.46	NP	NP	79.54		Gauged Only					
MW-9	07/12/2010	96.00	16.48	NP	NP	79.52		Gauged Only					
MW-9	08/18/2010	96.00	16.84	NP	NP	79.16		<0.50	<0.50	<0.50	<0.50	ND	1.6
MW-9	11/01/2010	96.00	16.69	NP	NP	79.31		<0.50	<0.50	<0.50	<0.50	ND	1.5
MW-9	02/14/2011	96.00	16.45	NP	NP	79.55		<0.50	<0.50	<0.50	<0.50	ND	1.5
MW-9	06/17/2011	96.00	16.44	NP	NP	79.56	3.00**	<0.50	<0.50	<0.50	<0.50	ND	1.3
MW-9	08/01/2011	96.00	16.71	NP	NP	79.29	2.75**	<0.50	<0.50	<0.50	<0.50	ND	1.3
MW-9	11/01/2011	96.00	15.89	NP	NP	80.11	3.25	<0.50	<0.50	<0.50	<0.50	ND	1.2
MW-9	02/14/2012	96	16.61	NP	NP	79.39	3.00	<0.50	<0.50	<0.50	<0.50	ND	1.2

TABLE 1
GROUND WATER GAUGING AND ANALYTICAL DATA
 BP Station Number 03887
 164 4th Ave
 Brooklyn, NY

Well ID	Date	GROUND WATER GAUGING DATA						GROUND WATER ANALYTICAL DATA					
		Reference Elevation (ft)	Depth to Water (ft)	Depth to LNAPL (ft)	LNAPL Thickness (ft)	Water Elevation (ft)*	Purge Volume (gals)*	Benzene (µg/L)	Toluene (µg/L)	Ethylbenzene (µg/L)	Xylenes (µg/L)	Total BTEX (µg/L)	MTBE (µg/L)
		NGV	NGV	NGV	NGV	NGV	NGV	1	5	5	5	NGV	10
MW-9	05/24/2012	96	16.79	NP	NP	79.21	3.00	<0.50	<0.50	<0.50	<0.50	ND	1.3
MW-9	08/27/2012	96	16.35	NP	NP	79.65	3.00	<0.50	<0.50	<0.50	<0.50	ND	1.3
MW-9	11/26/2012	96	16.19	NP	NP	79.81	3.00	<0.50	<0.50	<0.50	<0.50	ND	0.68 J
MW-9	02/15/2013	96	16.29	NP	NP	79.71	3.00	<0.50	<0.50	<0.50	<0.50	ND	<0.50
MW-9	05/13/2013	96.00	16.17	NP	NP	79.83	3.00	<0.50	<0.50	<0.50	<0.50	ND	<0.50
MW-10	12/17/2003	97.2	16.02	NP	NP	81.18		61.7	11.3	14.4	46.1	134	132
MW-10	02/11/2004	94.52	16.39	NP	NP	78.13		56.4	8.7	4.9	36.6	107	252
MW-10	05/18/2004	94.52	16.41	NP	NP	78.11		59.0	6.8	1.1	27.6	94.5	126
MW-10	08/18/2004	94.52	15.91	NP	NP	78.61		49.1	10.7	9.8	42.5	112	173
MW-10	11/23/2004	94.52	16.28	NP	NP	78.24		61.8	8.8	3.0	37.4	111	143
MW-10	02/15/2005	94.52	16.34	NP	NP	78.18		50.2	7.3	1.3	27.4	86.2	98.1
MW-10	05/12/2005	94.52	16.37	NP	NP	78.15		Gauged Only					
MW-10	05/27/2005	94.52	Sampled Only					45.6	5.5	0.8	22.0	73.9	115
MW-10	09/07/2005	94.52	16.46	NP	NP	78.06		32.1	4.8	1.1	16.1	54.1	110
MW-10	11/15/2005	94.52	15.97	NP	NP	78.55		26.0	2.2	<2.0	3.6	31.8	289
MW-10	02/15/2006	94.52	16.07	NP	NP	78.45		82.1	6.6	2.1	22.5	113	204
MW-10	06/06/2006	94.52	15.91	NP	NP	78.61		58.1	3.7	0.54 J	17.8	80.1	127
MW-10	08/28/2006	94.52	15.69	NP	NP	78.83		63.3	3.9	0.93 J	16.2	84.3	174

TABLE 1
GROUND WATER GAUGING AND ANALYTICAL DATA
 BP Station Number 03887
 164 4th Ave
 Brooklyn, NY

Well ID	Date	GROUND WATER GAUGING DATA						GROUND WATER ANALYTICAL DATA					
		Reference Elevation (ft)	Depth to Water (ft)	Depth to LNAPL (ft)	LNAPL Thickness (ft)	Water Elevation (ft)*	Purge Volume (gals)*	Benzene (µg/L)	Toluene (µg/L)	Ethyl-benzene (µg/L)	Xylenes (µg/L)	Total BTEX (µg/L)	MTBE (µg/L)
NYSDEC TOGS WQS		NGV	NGV	NGV	NGV	NGV	NGV	1	5	5	5	NGV	10
MW-10	11/27/2006	94.52	15.89	NP	NP	78.63		50.0	2.9	<1.0	11.2	64.1	193
MW-10	02/17/2007	94.52	16.35	NP	NP	78.17		40.7	2.2	0.36 J	10.1	53.4	194
MW-10	05/11/2007	94.52	15.81	NP	NP	78.71		<1.0	<1.0	<1.0	<1.0	ND	2.2
MW-10	08/30/2007	94.52	15.63	NP	NP	78.89		46.5	2.9	1.6	9.5	60.5	110
MW-10	11/21/2007	94.52	16.26	NP	NP	78.26		38.7	2.6	0.38 J	10.0	51.7	132
MW-10	02/25/2008	94.52	16.14	NP	NP	78.38		21	1.6	<0.50	7.2	29.8	94
MW-10	05/29/2008	94.52	16.42	NP	NP	78.10		18	1.4	<0.50	6.2	25.6	92
MW-10	07/29/2008	94.52	16.10	NP	NP	78.42		23	1.8	<0.50	7.4	32.2	66
MW-10	11/17/2008	94.52	16.24	NP	NP	78.28		20	2	<0.50	6.7	28.7	92
MW-10	01/14/2009	94.52	15.14	NP	NP	79.38		Gauged Only					
MW-10	02/06/2009	94.52	16.24	NP	NP	78.28		21	1.7	<0.50	5.9	28.6	61
MW-10	03/05/2009	94.52	16.40	NP	NP	78.12		Gauged Only					
MW-10	04/01/2009	94.52	16.43	NP	NP	78.09		Gauged Only					
MW-10	05/18/2009	94.52	16.21	NP	NP	78.31		8	1.1	<0.50	3.6	12.7	38
MW-10	06/30/2009	95.58	15.88	NP	NP	79.70		Gauged Only					
MW-10	07/30/2009	95.58	16.32	NP	NP	79.26		Gauged Only					
MW-10	08/06/2009	95.58	15.92	NP	NP	79.66		5.4	1.2	<0.50	3.9	10.5	46
MW-10	09/03/2009	95.58	16.10	NP	NP	79.48		Gauged Only					
MW-10	10/13/2009	95.58	16.20	NP	NP	79.38		Gauged Only					

TABLE 1
GROUND WATER GAUGING AND ANALYTICAL DATA
 BP Station Number 03887
 164 4th Ave
 Brooklyn, NY

Well ID	Date	GROUND WATER GAUGING DATA						GROUND WATER ANALYTICAL DATA					
		Reference Elevation (ft)	Depth to Water (ft)	Depth to LNAPL (ft)	LNAPL Thickness (ft)	Water Elevation (ft)*	Purge Volume (gals)*	Benzene (µg/L)	Toluene (µg/L)	Ethyl-benzene (µg/L)	Xylenes (µg/L)	Total BTEX (µg/L)	MTBE (µg/L)
NYSDEC TOGS WQS		NGV	NGV	NGV	NGV	NGV	NGV	1	5	5	5	NGV	10
MW-10	11/23/2009	95.58	16.33	NP	NP	79.25		1.9	0.91 J	<0.50	2.7	5.51	75
MW-10	12/08/2009	95.58	16.43	NP	NP	79.15		Gauged Only					
MW-10	01/31/2010	95.58	16.35	NP	NP	79.23		Gauged Only					
MW-10	02/09/2010	95.58	16.43	NP	NP	79.15		0.87 J	0.90 J	<0.50	2.5	4.27	78
MW-10	03/15/2010	95.58	15.76	NP	NP	79.82		<10	<10	<10	<10	ND	57
MW-10	04/08/2010	95.58	22.86	NP	NP	72.72		Gauged Only					
MW-10	05/19/2010	95.58	15.98	NP	NP	79.60		0.73 J	1.3	<0.50	2.4	4.43	47
MW-10	06/02/2010	95.58	16.15	NP	NP	79.43		Gauged Only					
MW-10	07/12/2010	95.58	16.52	NP	NP	79.06		Gauged Only					
MW-10	08/18/2010	95.58	16.60	NP	NP	78.98		<0.50	0.63 J	<0.50	1.8	2.43	130
MW-10	11/01/2010	95.58	16.36	NP	NP	79.22		0.58 J	<0.50	<0.50	1.8	2.38	140
MW-10	02/14/2011	95.58	16.19	NP	NP	79.39		2.7	0.84 J	<0.50	2.2	5.74	120
MW-10	06/17/2011	95.58	16.23	NP	NP	79.35	3.25**	15	5.7	<0.50	5.5	26.2	150
MW-10	08/01/2011	95.58	16.46	NP	NP	79.12	3.25**	29	10	0.59 J	11	50.6	260
MW-10	11/01/2011	95.58	15.75	NP	NP	79.83	3.50	21	6.3	0.57 J	8.8	36.7	180
MW-10	02/14/2012	95.58	16.54	NP	NP	79.04	3.00	38	8.2	1.8	20	68.0	150
MW-10	05/24/2012	95.58	16.7	NP	NP	78.88	3.00	26	4.9	<0.50	13	43.9	42
MW-10	08/27/2012	95.58	15.97	NP	NP	79.61	3.00	19	3.7	<0.50	12	34.7	55
MW-10	11/26/2012	95.58	16.51	NP	NP	79.07	3.00	10	0.76 J	<0.50	7.5	18.3	49

TABLE 1
GROUND WATER GAUGING AND ANALYTICAL DATA
 BP Station Number 03887
 164 4th Ave
 Brooklyn, NY

Well ID	Date	GROUND WATER GAUGING DATA						GROUND WATER ANALYTICAL DATA					
		Reference Elevation (ft)	Depth to Water (ft)	Depth to LNAPL (ft)	LNAPL Thickness (ft)	Water Elevation (ft)*	Purge Volume (gals)*	Benzene (µg/L)	Toluene (µg/L)	Ethylbenzene (µg/L)	Xylenes (µg/L)	Total BTEX (µg/L)	MTBE (µg/L)
NYSDEC TOGS WQS		NGV	NGV	NGV	NGV	NGV	NGV	1	5	5	5	NGV	10
MW-10	02/15/2013	95.58	16.72	NP	NP	78.86	3.00	0.62 J	<0.50	<0.50	<0.50	0.62	16
MW-10	05/13/2013	95.58	16.72	NP	NP	78.86	3.00	<0.50	<0.50	<0.50	<0.50	ND	9.9
MW-11	11/23/2004	94.02	15.88	NP	NP	78.14		<1.0	<1.0	<1.0	<1.0	ND	63.4
MW-11	02/15/2005	94.02	15.92	NP	NP	78.10		<1.0	<1.0	<1.0	<1.0	ND	38.0
MW-11	05/12/2005	94.02	15.94	NP	NP	78.08		Gauged Only					
MW-11	05/27/2005	94.02	Sampled Only					<1.0	<1.0	<1.0	<1.0	ND	29.2
MW-11	09/07/2005	94.02	16.15	NP	NP	77.87		<1.0	<1.0	<1.0	<1.0	ND	31.2
MW-11	11/15/2005	94.02	15.63	NP	NP	78.39		<1.0	<1.0	<1.0	<1.0	ND	23.9
MW-11	02/15/2006	94.02	15.76	NP	NP	78.26		<1.0	<1.0	<1.0	<1.0	ND	102
MW-11	06/06/2006	94.02	15.55	NP	NP	78.47		<1.0	<1.0	<1.0	<1.0	ND	34.4
MW-11	08/28/2006	94.02	15.41	NP	NP	78.61		<1.0	<1.0	<1.0	<1.0	ND	20.7
MW-11	11/27/2006	94.02	15.49	NP	NP	78.53		<1.0	<1.0	<1.0	<1.0	ND	3.6
MW-11	02/17/2007	94.02	15.95	NP	NP	78.07		<1.0	<1.0	<1.0	<1.0	ND	6.7
MW-11	05/11/2007	94.02	15.38	NP	NP	78.64		<1.0	<1.0	<1.0	<1.0	ND	6.4
MW-11	08/30/2007	94.02	15.29	NP	NP	78.73		<1.0	<1.0	<1.0	<1.0	ND	4.5
MW-11	11/21/2007	94.02	15.86	NP	NP	78.16		<1.0	<1.0	<1.0	<1.0	ND	11.9
MW-11	02/25/2008	94.02	Not Gauged					Not Sampled					
MW-11	05/29/2008	94.02	16.02	NP	NP	78.00		<0.50	<0.50	<0.50	<0.50	ND	6.2

TABLE 1
GROUND WATER GAUGING AND ANALYTICAL DATA
 BP Station Number 03887
 164 4th Ave
 Brooklyn, NY

Well ID	Date	GROUND WATER GAUGING DATA						GROUND WATER ANALYTICAL DATA					
		Reference Elevation (ft)	Depth to Water (ft)	Depth to LNAPL (ft)	LNAPL Thickness (ft)	Water Elevation (ft)*	Purge Volume (gals)*	Benzene (µg/L)	Toluene (µg/L)	Ethyl-benzene (µg/L)	Xylenes (µg/L)	Total BTEX (µg/L)	MTBE (µg/L)
NYSDEC TOGS WQS		NGV	NGV	NGV	NGV	NGV	NGV	1	5	5	5	NGV	10
MW-11	07/29/2008	94.02	15.78	NP	NP	78.24		<0.50	<0.50	<0.50	<0.50	ND	4.9
MW-11	11/17/2008	94.02	15.79	NP	NP	78.23		<0.50	<0.50	<0.50	<0.50	ND	5.5
MW-11	01/14/2009	94.02	14.88	NP	NP	79.14		Gauged Only					
MW-11	02/06/2009	94.02	15.84	NP	NP	78.18		<0.50	<0.50	<0.50	<0.50	ND	17
MW-11	03/05/2009	94.02	16.02	NP	NP	78.00		Gauged Only					
MW-11	04/01/2009	94.02	16.02	NP	NP	78.00		Gauged Only					
MW-11	05/18/2009	94.02	15.77	NP	NP	78.25		<0.50	<0.50	<0.50	<0.50	ND	5.7
MW-11	06/30/2009	95.14	15.41	NP	NP	79.73		Gauged Only					
MW-11	07/30/2009	95.14	15.45	NP	NP	79.69		Gauged Only					
MW-11	08/06/2009	95.14	15.45	NP	NP	79.69		<0.50	<0.50	<0.50	<0.50	ND	2.5
MW-11	09/03/2009	95.14	15.63	NP	NP	79.51		Gauged Only					
MW-11	10/13/2009	95.14	15.74	NP	NP	79.40		Gauged Only					
MW-11	11/23/2009	95.14	15.91	NP	NP	79.23		<0.50	<0.50	<0.50	<0.50	ND	3
MW-11	12/08/2009	95.14	15.97	NP	NP	79.17		Gauged Only					
MW-11	01/31/2010	95.14	15.93	NP	NP	79.21		Gauged Only					
MW-11	02/09/2010	95.14	Not Gauged - Obstruction in Well					<0.50	<0.50	<0.50	<0.50	ND	2.6
MW-11	03/15/2010	95.14	15.25	NP	NP	79.89		<0.50	<0.50	<0.50	<0.50	ND	0.84 J
MW-11	04/08/2010	95.14	15.89	NP	NP	79.25		Gauged Only					
MW-11	05/19/2010	95.14	15.50	NP	NP	79.64		<0.50	<0.50	<0.50	<0.50	ND	<0.50

TABLE 1
GROUND WATER GAUGING AND ANALYTICAL DATA
 BP Station Number 03887
 164 4th Ave
 Brooklyn, NY

Well ID	Date	GROUND WATER GAUGING DATA						GROUND WATER ANALYTICAL DATA						
		Reference Elevation (ft)	Depth to Water (ft)	Depth to LNAPL (ft)	LNAPL Thickness (ft)	Water Elevation (ft)*	Purge Volume (gals)*	Benzene (µg/L)	Toluene (µg/L)	Ethyl-benzene (µg/L)	Xylenes (µg/L)	Total BTEX (µg/L)	MTBE (µg/L)	
NYSDEC TOGS WQS		NGV	NGV	NGV	NGV	NGV	NGV	1	5	5	5	NGV	10	
MW-11	06/02/2010	95.14	15.73	NP	NP	79.41		Gauged Only						
MW-11	07/12/2010	95.14	15.85	NP	NP	79.29		Gauged Only						
MW-11	08/18/2010	95.14	Dry					Not Sampled - Dry						
MW-11	11/01/2010	95.14	16.15	NP	NP	78.99		Not Sampled - Insufficient Sample Volume						
MW-11	02/14/2011	95.14	15.76	NP	NP	79.38		Not Sampled - Insufficient Sampled Volume						
MW-11	06/17/2011	95.14	15.78	NP	NP	79.36	NM	Not Sampled - Insufficient Sampled Volume						
MW-11	06/17/2011	95.14	15.78	NP	NP	79.36	NM	Not Sampled - Insufficient Sampled Volume						
MW-11	11/01/2011	95.14	15.36	NP	NP	79.78	NM	Not Sampled - Insufficient Sampled Volume						
MW-11	05/24/2012	95.14	Well Casing Broken					NM	Not Sampled - Well Casing Broken					
MW-11	08/27/2012	95.14	Well Destroyed					NM	Well Destroyed					
MW-12	11/23/2004	93.53	15.47	NP	NP	78.06		<1.0	<1.0	<1.0	<1.0	ND	2.4	
MW-12	02/15/2005	93.53	15.55	NP	NP	77.98		<1.0	<1.0	<1.0	<1.0	ND	3.3	
MW-12	05/12/2005	93.53	15.51	NP	NP	78.02		Gauged Only						
MW-12	05/27/2005	93.53	Sampled Only					<1.0	<1.0	<1.0	<1.0	ND	3.5	
MW-12	09/07/2005	93.53	15.67	NP	NP	77.86		<1.0	<1.0	<1.0	<1.0	ND	3.5	
MW-12	11/15/2005	93.53	15.22	NP	NP	78.31		<1.0	<1.0	<1.0	<1.0	ND	3.9	
MW-12	02/15/2006	93.53	15.32	NP	NP	78.21		<1.0	<1.0	<1.0	<1.0	ND	<1.0	
MW-12	06/06/2006	93.53	15.07	NP	NP	78.46		<1.0	<1.0	<1.0	<1.0	ND	4.8	

TABLE 1
GROUND WATER GAUGING AND ANALYTICAL DATA
 BP Station Number 03887
 164 4th Ave
 Brooklyn, NY

Well ID	Date	GROUND WATER GAUGING DATA						GROUND WATER ANALYTICAL DATA					
		Reference Elevation (ft)	Depth to Water (ft)	Depth to LNAPL (ft)	LNAPL Thickness (ft)	Water Elevation (ft)*	Purge Volume (gals)*	Benzene (µg/L)	Toluene (µg/L)	Ethylbenzene (µg/L)	Xylenes (µg/L)	Total BTEX (µg/L)	MTBE (µg/L)
NYSDEC TOGS WQS		NGV	NGV	NGV	NGV	NGV	NGV	1	5	5	5	NGV	10
MW-12	08/28/2006	93.53	14.97	NP	NP	78.56		<1.0	<1.0	<1.0	<1.0	ND	2.2
MW-12	11/27/2006	93.53	15.01	NP	NP	78.52		<1.0	<1.0	<1.0	<1.0	ND	4.5
MW-12	02/17/2007	93.53	15.47	NP	NP	78.06		<1.0	<1.0	<1.0	<1.0	ND	1.3
MW-12	05/11/2007	93.53	14.91	NP	NP	78.62		<1.0	<1.0	<1.0	<1.0	ND	<1.0
MW-12	08/30/2007	93.53	14.78	NP	NP	78.75		<1.0	<1.0	<1.0	<1.0	ND	2.2
MW-12	11/21/2007	93.53	15.44	NP	NP	78.09		<1.0	<1.0	<1.0	<1.0	ND	2.0
MW-12	02/25/2008	93.53	Not Gauged					Not Sampled					
MW-12	05/29/2008	93.53	15.57	NP	NP	77.96		<0.50	<0.50	<0.50	<0.50	ND	<0.50
MW-12	07/29/2008	93.53	15.35	NP	NP	78.18		<0.50	<0.50	<0.50	<0.50	ND	4
MW-12	11/17/2008	93.53	15.36	NP	NP	78.17		<0.50	<0.50	<0.50	<0.50	ND	2.3
MW-12	01/14/2009	93.53	15.03	NP	NP	78.50		Gauged Only					
MW-12	02/06/2009	93.53	15.55	NP	NP	77.98		<0.50	<0.50	<0.50	<0.50	ND	0.95 J
MW-12	03/05/2009	93.53	15.66	NP	NP	77.87		Gauged Only					
MW-12	04/01/2009	93.53	15.64	NP	NP	77.89		Gauged Only					
MW-12	05/18/2009	93.53	15.28	NP	NP	78.25		<0.50	<0.50	<0.50	<0.50	ND	<0.50
MW-12	06/30/2009	94.63	15.02	NP	NP	79.61		Gauged Only					
MW-12	07/30/2009	94.63	15.51	NP	NP	79.12		Gauged Only					
MW-12	08/06/2009	94.63	15.02	NP	NP	79.61		<0.50	<0.50	<0.50	<0.50	ND	1.2
MW-12	09/03/2009	94.63	15.22	NP	NP	79.41		Gauged Only					

TABLE 1
GROUND WATER GAUGING AND ANALYTICAL DATA
 BP Station Number 03887
 164 4th Ave
 Brooklyn, NY

Well ID	Date	GROUND WATER GAUGING DATA						GROUND WATER ANALYTICAL DATA					
		Reference Elevation (ft)	Depth to Water (ft)	Depth to LNAPL (ft)	LNAPL Thickness (ft)	Water Elevation (ft)*	Purge Volume (gals)*	Benzene (µg/L)	Toluene (µg/L)	Ethyl-benzene (µg/L)	Xylenes (µg/L)	Total BTEX (µg/L)	MTBE (µg/L)
NYSDEC TOGS WQS		NGV	NGV	NGV	NGV	NGV	NGV	1	5	5	5	NGV	10
MW-12	10/13/2009	94.63	15.30	NP	NP	79.33		Gauged Only					
MW-12	11/23/2009	94.63	15.44	NP	NP	79.19		<0.50	<0.50	<0.50	<0.50	ND	<0.50
MW-12	12/08/2009	94.63	15.52	NP	NP	79.11		Gauged Only					
MW-12	01/31/2010	94.63	15.48	NP	NP	79.15		Gauged Only					
MW-12	02/09/2010	94.63	15.57	NP	NP	79.06		<0.50	<0.50	<0.50	<0.50	ND	1.8
MW-12	03/15/2010	94.63	14.83	NP	NP	79.80		<0.50	<0.50	<0.50	0.65 J	0.65	0.90 J
MW-12	04/08/2010	94.63	22.02	NP	NP	72.61		Gauged Only					
MW-12	05/19/2010	94.63	15.07	NP	NP	79.56		<0.50	<0.50	<0.50	<0.50	ND	2.2
MW-12	06/02/2010	94.63	Dry					Gauged Only					
MW-12	07/12/2010	94.63	15.37	NP	NP	79.26		Gauged Only					
MW-12	08/18/2010	94.63	15.70	NP	NP	78.93		<0.50	<0.50	<0.50	<0.50	ND	<0.50
MW-12	11/01/2010	94.63	14.45	NP	NP	80.18		<0.50	<0.50	<0.50	<0.50	ND	<0.50
MW-12	02/14/2011	94.63	No Access-Ice Over Well					No Access-Ice Over Well					
MW-12	06/17/2011	94.63	15.36	NP	NP	79.27	0.75**	<0.50	<0.50	<0.50	<0.50	ND	1.8
MW-12	08/01/2011	94.63	15.60	NP	NP	79.03	0.75**	<0.50	<0.50	<0.50	<0.50	ND	<0.50
MW-12	11/01/2011	94.63	14.89	NP	NP	79.74	0.75	<0.50	<0.50	<0.50	<0.50	ND	<0.50
MW-12	02/14/2012	94.63	15.75	NP	NP	78.88	0.50	<0.50	<0.50	<0.50	<0.50	ND	<0.50
MW-12	05/24/2012	94.63	15.82	NP	NP	78.81	Grab	<0.50	<0.50	<0.50	<0.50	ND	<0.50
MW-12	08/27/2012	94.63	16.1	NP	NP	78.53	NM	<0.50	<0.50	<0.50	<0.50	ND	3

TABLE 1
GROUND WATER GAUGING AND ANALYTICAL DATA
 BP Station Number 03887
 164 4th Ave
 Brooklyn, NY

Well ID	Date	GROUND WATER GAUGING DATA						GROUND WATER ANALYTICAL DATA					
		Reference Elevation (ft)	Depth to Water (ft)	Depth to LNAPL (ft)	LNAPL Thickness (ft)	Water Elevation (ft)*	Purge Volume (gals)*	Benzene (µg/L)	Toluene (µg/L)	Ethyl-benzene (µg/L)	Xylenes (µg/L)	Total BTEX (µg/L)	MTBE (µg/L)
NYSDEC TOGS WQS		NGV	NGV	NGV	NGV	NGV	NGV	1	5	5	5	NGV	10
MW-12	11/26/2012	94.63	15.78	NP	NP	78.85	1.00	<0.50	<0.50	<0.50	<0.50	ND	0.56 J
MW-12	02/15/2013	94.63	15.96	NP	NP	78.67	0.75	<0.50	<0.50	<0.50	<0.50	ND	<0.50
MW-12	05/13/2013	94.63	15.93	NP	NP	78.7	0.75	<0.50	<0.50	<0.50	<0.50	ND	2.6
MW-13	02/15/2005	93.21	15.29	NP	NP	77.92		<1.0	<1.0	<1.0	<1.0	ND	10.9
MW-13	05/12/2005	93.21	NM	NP	NP	NM		Gauged Only					
MW-13	05/27/2005	93.21	Sampled Only					<1.0	<1.0	<1.0	<1.0	ND	7.9
MW-13	09/07/2005	93.21	15.45	NP	NP	77.76		<1.0	<1.0	<1.0	<1.0	ND	6.1
MW-13	11/15/2005	93.21	14.98	NP	NP	78.23		<1.0	<1.0	<1.0	<1.0	ND	13.4
MW-13	02/15/2006	93.21	15.10	NP	NP	78.11		<1.0	<1.0	<1.0	<1.0	ND	10.6
MW-13	06/06/2006	93.21	14.91	NP	NP	78.30		<1.0	<1.0	<1.0	<1.0	ND	9.3
MW-13	08/28/2006	93.21	14.76	NP	NP	78.45		<1.0	<1.0	<1.0	<1.0	ND	8.3
MW-13	11/27/2006	93.21	14.79	NP	NP	78.42		<1.0	<1.0	<1.0	<1.0	ND	9.9
MW-13	02/17/2007	93.21	15.24	NP	NP	77.97		<1.0	<1.0	<1.0	<1.0	ND	3.0
MW-13	05/11/2007	93.21	14.66	NP	NP	78.55		<1.0	<1.0	<1.0	<1.0	ND	8.4
MW-13	08/30/2007	93.21	14.58	NP	NP	78.63		<1.0	<1.0	<1.0	<1.0	ND	8.8
MW-13	11/21/2007	93.21	16.18	NP	NP	77.03		<1.0	<1.0	<1.0	<1.0	ND	1.9
MW-13	02/25/2008	93.21	Not Gauged					Not Sampled					
MW-13	05/29/2008	93.21	15.33	NP	NP	77.88		<0.50	<0.50	<0.50	<0.50	ND	<0.50

TABLE 1
GROUND WATER GAUGING AND ANALYTICAL DATA
 BP Station Number 03887
 164 4th Ave
 Brooklyn, NY

Well ID	Date	GROUND WATER GAUGING DATA						GROUND WATER ANALYTICAL DATA					
		Reference Elevation (ft)	Depth to Water (ft)	Depth to LNAPL (ft)	LNAPL Thickness (ft)	Water Elevation (ft)*	Purge Volume (gals)*	Benzene (µg/L)	Toluene (µg/L)	Ethyl-benzene (µg/L)	Xylenes (µg/L)	Total BTEX (µg/L)	MTBE (µg/L)
NYSDEC TOGS WQS		NGV	NGV	NGV	NGV	NGV	NGV	1	5	5	5	NGV	10
MW-13	07/29/2008	93.21	15.10	NP	NP	78.11		<0.50	<0.50	<0.50	<0.50	ND	5
MW-13	11/17/2008	93.21	15.17	NP	NP	78.04		<0.50	<0.50	<0.50	<0.50	ND	1.5
MW-13	01/14/2009	93.21	No Access - Ice Over Well					Gauged Only					
MW-13	02/06/2009	93.21	15.27	NP	NP	77.94		<0.50	<0.50	<0.50	<0.50	ND	2.2
MW-13	03/05/2009	93.21	15.43	NP	NP	77.78		Gauged Only					
MW-13	04/01/2009	93.21	15.42	NP	NP	77.79		Gauged Only					
MW-13	05/18/2009	93.21	15.07	NP	NP	78.14		<0.50	<0.50	<0.50	<0.50	ND	3.7
MW-13	06/30/2009	94.33	14.74	NP	NP	79.59		Gauged Only					
MW-13	07/30/2009	94.33	14.71	NP	NP	79.62		Gauged Only					
MW-13	08/06/2009	94.33	14.78	NP	NP	79.55		<0.50	<0.50	<0.50	<0.50	ND	1.0
MW-13	09/03/2009	94.33	14.98	NP	NP	79.35		Gauged Only					
MW-13	10/13/2009	94.33	15.06	NP	NP	79.27		Gauged Only					
MW-13	11/23/2009	94.33	15.29	NP	NP	79.04		<0.50	<0.50	<0.50	<0.50	ND	<0.50
MW-13	12/08/2009	94.33	15.29	NP	NP	79.04		Gauged Only					
MW-13	01/31/2010	94.33	15.25	NP	NP	79.08		Gauged Only					
MW-13	02/09/2010	94.33	15.17	NP	NP	79.16		<0.50	<0.50	<0.50	<0.50	ND	1
MW-13	03/15/2010	94.33	14.66	NP	NP	79.67		<0.50	<0.50	<0.50	0.54 J	0.54	5.1
MW-13	04/08/2010	94.33	20.22	NP	NP	74.11		Gauged Only					
MW-13	05/19/2010	94.33	14.85	NP	NP	79.48		<0.50	<0.50	<0.50	<0.50	ND	4.5

TABLE 1
GROUND WATER GAUGING AND ANALYTICAL DATA
 BP Station Number 03887
 164 4th Ave
 Brooklyn, NY

Well ID	Date	GROUND WATER GAUGING DATA						GROUND WATER ANALYTICAL DATA					
		Reference Elevation (ft)	Depth to Water (ft)	Depth to LNAPL (ft)	LNAPL Thickness (ft)	Water Elevation (ft)*	Purge Volume (gals)*	Benzene (µg/L)	Toluene (µg/L)	Ethylbenzene (µg/L)	Xylenes (µg/L)	Total BTEX (µg/L)	MTBE (µg/L)
NYSDEC TOGS WQS		NGV	NGV	NGV	NGV	NGV	NGV	1	5	5	5	NGV	10
MW-13	06/02/2010	94.33	15.03	NP	NP	79.30		Gauged Only					
MW-13	07/12/2010	94.33	15.17	NP	NP	79.16		Gauged Only					
MW-13	08/18/2010	94.33	15.45	NP	NP	78.88		<0.50	<0.50	<0.50	<0.50	ND	<0.50
MW-13	11/01/2010	94.33	15.24	NP	NP	79.09		<0.50	<0.50	<0.50	<0.50	ND	<0.50
MW-13	02/14/2011	94.33	15.12	NP	NP	79.21		<0.50	<0.50	<0.50	<0.50	ND	1.9
MW-13	06/17/2011	94.33	15.11	NP	NP	79.22	0.50**	<0.50	<0.50	<0.50	<0.50	ND	<0.50
MW-13	08/01/2011	94.33	15.39	NP	NP	78.94	0.50**	<0.50	<0.50	<0.50	<0.50	ND	0.83 J
MW-13	11/01/2011	94.33	14.70	NP	NP	79.63	0.50	<0.50	<0.50	<0.50	<0.50	ND	1.3
MW-13	02/14/2012	94.33	15.5	NP	NP	78.83	0.50	<0.50	<0.50	<0.50	<0.50	ND	1
MW-13	05/24/2012	94.33	15.6	NP	NP	78.73	0.25	<0.50	<0.50	<0.50	<0.50	ND	<0.50
MW-13	08/27/2012	94.33	14.85	NP	NP	79.48	NM	<0.50	<0.50	<0.50	<0.50	ND	3.1
MW-13	11/26/2012	94.33	15.56	NP	NP	78.77	0.50	<0.50	<0.50	<0.50	<0.50	ND	<0.50
MW-13	02/15/2013	94.33	15.74	NP	NP	78.59	Grab	<0.50	<0.50	<0.50	<0.50	ND	1.6
MW-13	05/13/2013	94.33	15.72	NP	NP	78.61	0.50	<0.50	<0.50	<0.50	<0.50	ND	1.7
MW-14	02/15/2005	94.05	16.08	NP	NP	77.97		<1.0	<1.0	<1.0	<1.0	ND	7.1
MW-14	05/12/2005	94.05	NM	NP	NP	NM		Gauged Only					
MW-14	05/27/2005	94.05	Sampled Only					<1.0	<1.0	<1.0	<1.0	ND	5.7
MW-14	09/07/2005	94.05	16.19	NP	NP	77.86		<1.0	<1.0	<1.0	<1.0	ND	5.0

TABLE 1
GROUND WATER GAUGING AND ANALYTICAL DATA
 BP Station Number 03887
 164 4th Ave
 Brooklyn, NY

Well ID	Date	GROUND WATER GAUGING DATA						GROUND WATER ANALYTICAL DATA					
		Reference Elevation (ft)	Depth to Water (ft)	Depth to LNAPL (ft)	LNAPL Thickness (ft)	Water Elevation (ft)*	Purge Volume (gals)*	Benzene (µg/L)	Toluene (µg/L)	Ethylbenzene (µg/L)	Xylenes (µg/L)	Total BTEX (µg/L)	MTBE (µg/L)
NYSDEC TOGS WQS		NGV	NGV	NGV	NGV	NGV	NGV	1	5	5	5	NGV	10
MW-14	11/15/2005	94.05	15.78	NP	NP	78.27		<1.0	<1.0	<1.0	<1.0	ND	5.9
MW-14	02/15/2006	94.05	15.88	NP	NP	78.17		<1.0	<1.0	<1.0	<1.0	ND	6.0
MW-14	06/06/2006	94.05	15.70	NP	NP	78.35		<1.0	<1.0	<1.0	<1.0	ND	4.8
MW-14	08/28/2006	94.05	15.56	NP	NP	78.49		<1.0	<1.0	<1.0	<1.0	ND	3.8
MW-14	11/27/2006	94.05	15.61	NP	NP	78.44		<1.0	<1.0	<1.0	<1.0	ND	3.8
MW-14	02/17/2007	94.05	16.08	NP	NP	77.97		<1.0	<1.0	<1.0	<1.0	ND	4.6
MW-14	05/11/2007	94.05	15.48	NP	NP	78.57		<1.0	<1.0	<1.0	<1.0	ND	4.2
MW-14	08/30/2007	94.05	15.33	NP	NP	78.72		<1.0	<1.0	<1.0	<1.0	ND	<1.0
MW-14	11/21/2007	94.05	15.98	NP	NP	78.07		<1.0	<1.0	<1.0	<1.0	ND	4.1
MW-14	02/25/2008	94.05	15.81	NP	NP	78.24		<0.50	<0.50	<0.50	<0.50	ND	4.3
MW-14	05/29/2008	94.05	16.14	NP	NP	77.91		<0.50	<0.50	<0.50	<0.50	ND	4.1
MW-14	07/29/2008	94.05	15.84	NP	NP	78.21		<0.50	<0.50	<0.50	<0.50	ND	3.2
MW-14	11/17/2008	94.05	15.96	NP	NP	78.09		<0.50	<0.50	<0.50	<0.50	ND	4.2
MW-14	01/14/2009	94.05	14.78	NP	NP	79.27		Gauged Only					
MW-14	02/06/2009	94.05	16.02	NP	NP	78.03		<0.50	<0.50	<0.50	<0.50	ND	4.9
MW-14	03/05/2009	94.05	16.23	NP	NP	77.82		Gauged Only					
MW-14	04/01/2009	94.05	16.22	NP	NP	77.83		Gauged Only					
MW-14	05/18/2009	94.05	15.86	NP	NP	78.19		<0.50	<0.50	<0.50	<0.50	ND	3.6
MW-14	06/30/2009	95.16	15.55	NP	NP	79.61		Gauged Only					

TABLE 1
GROUND WATER GAUGING AND ANALYTICAL DATA
 BP Station Number 03887
 164 4th Ave
 Brooklyn, NY

Well ID	Date	GROUND WATER GAUGING DATA						GROUND WATER ANALYTICAL DATA					
		Reference Elevation (ft)	Depth to Water (ft)	Depth to LNAPL (ft)	LNAPL Thickness (ft)	Water Elevation (ft)*	Purge Volume (gals)*	Benzene (µg/L)	Toluene (µg/L)	Ethyl-benzene (µg/L)	Xylenes (µg/L)	Total BTEX (µg/L)	MTBE (µg/L)
NYSDEC TOGS WQS		NGV	NGV	NGV	NGV	NGV	NGV	1	5	5	5	NGV	10
MW-14	07/30/2009	95.16	16.21	NP	NP	78.95		Gauged Only					
MW-14	08/06/2009	95.16	15.55	NP	NP	79.61		<0.50	<0.50	<0.50	<0.50	ND	<0.50
MW-14	09/03/2009	95.16	15.76	NP	NP	79.40		Gauged Only					
MW-14	10/13/2009	95.16	15.85	NP	NP	79.31		Gauged Only					
MW-14	11/23/2009	95.16	15.97	NP	NP	79.19		<0.50	<0.50	<0.50	<0.50	ND	4.6
MW-14	12/08/2009	95.16	16.10	NP	NP	79.06		Gauged Only					
MW-14	01/31/2010	95.16	16.04	NP	NP	79.12		Gauged Only					
MW-14	02/09/2010	95.16	16.12	NP	NP	79.04		<0.50	<0.50	<0.50	<0.50	ND	4.2
MW-14	03/15/2010	95.16	15.44	NP	NP	79.72		<0.50	<0.50	<0.50	<0.50	ND	1.6
MW-14	04/08/2010	95.16	19.62	NP	NP	75.54		Gauged Only					
MW-14	05/19/2010	95.16	15.67	NP	NP	79.49		<0.50	<0.50	<0.50	<0.50	ND	3.8
MW-14	06/02/2010	95.16	15.82	NP	NP	79.34		Gauged Only					
MW-14	07/12/2010	95.16	15.92	NP	NP	79.24		Gauged Only					
MW-14	08/18/2010	95.16	16.36	NP	NP	78.80		<0.50	<0.50	<0.50	<0.50	ND	4.1
MW-14	11/01/2010	95.16	16.01	NP	NP	79.15		<0.50	<0.50	<0.50	<0.50	ND	3
MW-14	02/14/2011	95.16	15.91	NP	NP	79.25		<0.50	<0.50	<0.50	<0.50	ND	3.8
MW-14	06/17/2011	95.16	15.94	NP	NP	79.22	1.75**	<0.50	<0.50	<0.50	<0.50	ND	3.4
MW-14	08/01/2011	95.16	16.13	NP	NP	79.03	1.75**	<0.50	<0.50	<0.50	<0.50	ND	3.9
MW-14	11/01/2011	95.16	15.50	NP	NP	79.66	2.00	<0.50	<0.50	<0.50	<0.50	ND	2.4

TABLE 1
GROUND WATER GAUGING AND ANALYTICAL DATA
 BP Station Number 03887
 164 4th Ave
 Brooklyn, NY

Well ID	Date	GROUND WATER GAUGING DATA						GROUND WATER ANALYTICAL DATA					
		Reference Elevation (ft)	Depth to Water (ft)	Depth to LNAPL (ft)	LNAPL Thickness (ft)	Water Elevation (ft)*	Purge Volume (gals)*	Benzene (µg/L)	Toluene (µg/L)	Ethyl-benzene (µg/L)	Xylenes (µg/L)	Total BTEX (µg/L)	MTBE (µg/L)
		NGV	NGV	NGV	NGV	NGV	NGV	1	5	5	5	NGV	10
MW-14	02/14/2012	95.16	16.29	NP	NP	78.87	1.50	<0.50	<0.50	<0.50	<0.50	ND	4.9
MW-14	05/24/2012	95.16	16.34	NP	NP	78.82	1.50	<0.50	<0.50	<0.50	<0.50	ND	3.2
MW-14	08/27/2012	95.16	15.65	NP	NP	79.51	1.75	<0.50	<0.50	<0.50	<0.50	ND	2.6
MW-14	11/26/2012	95.16	16.34	NP	NP	78.82	2.00	<0.50	<0.50	<0.50	<0.50	ND	3.4
MW-14	02/15/2013	95.16	16.54	NP	NP	78.62	1.50	<0.50	<0.50	<0.50	<0.50	ND	3.3
MW-14	05/13/2013	95.16	16.51	NP	NP	78.65	1.50	<0.50	<0.50	<0.50	<0.50	ND	3.3
MW-15	06/30/2009	99.08	17.22	NP	NP	NM		Gauged Only					
MW-15	07/30/2009	99.08	17.25	NP	NP	81.83		Gauged Only					
MW-15	08/06/2009	99.08	17.37	NP	NP	81.71		110	9,300	1,700	7,900	19,010	<5.0
MW-15	09/03/2009	99.08	17.46	NP	NP	81.62		Gauged Only					
MW-15	10/13/2009	99.08	17.65	NP	NP	81.43		Gauged Only					
MW-15	11/23/2009	99.08	17.76	NP	NP	81.32		180	12,000	2,900	17,000	32,080	<5.0
MW-15	12/08/2009	99.08	17.68	NP	NP	81.40		Gauged Only					
MW-15	01/31/2010	99.08	17.64	NP	NP	81.44		Gauged Only					
MW-15	02/09/2010	99.08	17.68	NP	NP	81.40		140	8,000	1,900	15,000	25,040	<5.0
MW-15	03/15/2010	99.08	16.94	NP	NP	82.14		150	7,200	2,100	15,000	24,450	<5.0
MW-15	04/08/2010	99.08	21.11	NP	NP	77.97		Gauged Only					
MW-15	05/19/2010	99.08	16.8	NP	NP	82.28		150	6,100	1,900	15,000	23,150	<5.0

TABLE 1
GROUND WATER GAUGING AND ANALYTICAL DATA
 BP Station Number 03887
 164 4th Ave
 Brooklyn, NY

Well ID	Date	GROUND WATER GAUGING DATA						GROUND WATER ANALYTICAL DATA					
		Reference Elevation (ft)	Depth to Water (ft)	Depth to LNAPL (ft)	LNAPL Thickness (ft)	Water Elevation (ft)*	Purge Volume (gals)*	Benzene (µg/L)	Toluene (µg/L)	Ethyl-benzene (µg/L)	Xylenes (µg/L)	Total BTEX (µg/L)	MTBE (µg/L)
NYSDEC TOGS WQS		NGV	NGV	NGV	NGV	NGV	NGV	1	5	5	5	NGV	10
MW-15	06/02/2010	99.08	16.95	NP	NP	82.13		Gauged Only					
MW-15	07/12/2010	99.08	17.20	NP	NP	81.88		Gauged Only					
MW-15	08/18/2010	99.08	17.56	NP	NP	81.52		180	4,500	2,600	16,000	23,280	<2.5
MW-15	11/01/2010	99.08	17.51	NP	NP	81.57		160	2,600	2,300	15,000	20,060	<5.0
MW-15	02/14/2011	99.08	17.40	NP	NP	81.68		150	2,000	2,300	13,000	17,450	<2.5
MW-15	06/17/2011	99.08	17.01	NP	NP	82.07	2.00**	150	2,600	2,400	14,000	19,150	<5.0
MW-15	08/01/2011	99.08	17.45	NP	NP	81.63	1.75**	150	2,300	2,800	14,000	19,250	1.3 J
MW-15	11/01/2011	99.08	16.30	NP	NP	82.78	2.50	83	1,200	2,500	15,000	18,783	<5.0
MW-15	02/14/2012	99.08	16.9	NP	NP	82.18	2.00	98	380	2,600	14,000	17,078	<2.5
MW-15	05/24/2012	99.08	17.36	NP	NP	81.72	1.75	100	170	2,500	14,000	16,770	<5.0
MW-15	08/27/2012	99.08	17.36	NP	NP	81.72	2.00	120	170	2,500	11,000	13,790	<2.5
MW-15	11/26/2012	99.08	17.65	NP	NP	81.43	2.00	47	9,800	2,000	12,000	23,847	<10
MW-15	02/15/2013	99.08	16.85	NP	NP	82.23	2.00	8.0 J	2,500	1,200	9,500	13,208	<0.50
MW-15	05/13/2013	99.08	15.52	NP	NP	83.56	2.75	14	1,000	710	6,100	7,824	<0.50
MW-16	06/30/2009	100.3	19.92	NP	NP	NM		Gauged Only					
MW-16	07/30/2009	100.3	18.15	NP	NP	82.15		Gauged Only					
MW-16	08/06/2009	100.30	19.91	NP	NP	80.39		36	1.4 J	2.9 J	3.7 J	44.0	34
MW-16	09/03/2009	100.30	19.91	NP	NP	80.39		Gauged Only					

TABLE 1
GROUND WATER GAUGING AND ANALYTICAL DATA
 BP Station Number 03887
 164 4th Ave
 Brooklyn, NY

Well ID	Date	GROUND WATER GAUGING DATA						GROUND WATER ANALYTICAL DATA					
		Reference Elevation (ft)	Depth to Water (ft)	Depth to LNAPL (ft)	LNAPL Thickness (ft)	Water Elevation (ft)*	Purge Volume (gals)*	Benzene (µg/L)	Toluene (µg/L)	Ethyl-benzene (µg/L)	Xylenes (µg/L)	Total BTEX (µg/L)	MTBE (µg/L)
NYSDEC TOGS WQS		NGV	NGV	NGV	NGV	NGV	NGV	1	5	5	5	NGV	10
MW-16	10/13/2009	100.30	19.96	NP	NP	80.34		Gauged Only					
MW-16	11/23/2009	100.30	20.03	NP	NP	80.27		15	1	1.8	2.5	20.3	55
MW-16	12/08/2009	100.30	20.01	NP	NP	80.29		Gauged Only					
MW-16	01/31/2010	100.30	19.99	NP	NP	80.31		Gauged Only					
MW-16	02/09/2010	100.30	20.05	NP	NP	80.25		12	1.1	1.6	2.5	17.2	57
MW-16	03/15/2010	100.30	19.86	NP	NP	80.44		16	1.6	2.7	4.7	25.0	43
MW-16	04/08/2010	100.30	22.79	NP	NP	77.51		Gauged Only					
MW-16	05/19/2010	100.30	19.83	NP	NP	80.47		10	0.89 J	1.7	2.4	15.0	38
MW-16	06/02/2010	100.30	19.86	NP	NP	80.44		Gauged Only					
MW-16	07/12/2010	100.30	19.89	NP	NP	80.41		Gauged Only					
MW-16	08/18/2010	100.30	20.03	NP	NP	80.27		7.8	0.94 J	1.4	2.5	12.6	37
MW-16	11/01/2010	100.30	19.97	NP	NP	80.33		6.3	0.87 J	0.92 J	2.2	10.3	33
MW-16	02/14/2011	100.30	19.89	NP	NP	80.41		3.9	0.80 J	<0.50	2.1	6.8	23
MW-16	06/17/2011	100.30	19.82	NP	NP	80.48	1.25**	3.3	0.93 J	<0.50	2.4	6.63	15
MW-16	08/01/2011	100.30	19.87	NP	NP	80.43	1.25**	1.8	0.85 J	<0.50	2.5	5.15	18
MW-16	11/01/2011	100.30	22.35	NP	NP	77.95	1.25	1.4	0.83 J	<0.50	2.3	4.53	13
MW-16	02/14/2012	100.3	19.9	NP	NP	80.4	1.00	0.54 J	0.92 J	<0.50	3.7	5.16	16
MW-16	05/24/2012	100.3	19.97	NP	NP	80.33	1.00	<0.50	0.75	<0.50	2.5	3.25	11
MW-16	08/27/2012	100.3	19.89	NP	NP	80.41	1.00	<0.50	0.65 J	<0.50	2	2.65	16

TABLE 1
GROUND WATER GAUGING AND ANALYTICAL DATA
 BP Station Number 03887
 164 4th Ave
 Brooklyn, NY

Well ID	Date	GROUND WATER GAUGING DATA						GROUND WATER ANALYTICAL DATA					
		Reference Elevation (ft)	Depth to Water (ft)	Depth to LNAPL (ft)	LNAPL Thickness (ft)	Water Elevation (ft)*	Purge Volume (gals)*	Benzene (µg/L)	Toluene (µg/L)	Ethyl-benzene (µg/L)	Xylenes (µg/L)	Total BTEX (µg/L)	MTBE (µg/L)
		NGV	NGV	NGV	NGV	NGV	NGV	1	5	5	5	NGV	10
MW-16	11/26/2012	100.3	19.95	NP	NP	80.35	1.00	<0.50	0.59 J	<0.50	1.9	2.49	14
MW-16	02/15/2013	100.3	19.85	NP	NP	80.45	1.00	<0.50	0.63 J	<0.50	1.7	2.33	16
MW-16	05/13/2013	100.30	19.71	NP	NP	80.59	1.50	<0.50	0.69 J	<0.50	2.8	3.49	13
MW-17	06/30/2009	94.96	13.66	NP	NP	NM		Gauged Only					
MW-17	07/30/2009	94.96	17.57	NP	NP	77.39		Gauged Only					
MW-17	08/06/2009	94.96	15.36	NP	NP	79.60		<0.50	<0.70	<0.80	<0.80	ND	0.82 J
MW-17	09/03/2009	94.96	15.57	NP	NP	79.39		Gauged Only					
MW-17	10/13/2009	94.96	15.66	NP	NP	79.30		Gauged Only					
MW-17	11/23/2009	94.96	15.79	NP	NP	79.17		<0.50	<0.50	<0.50	<0.50	ND	<0.50
MW-17	12/08/2009	94.96	15.88	NP	NP	79.08		Gauged Only					
MW-17	01/31/2010	94.96	15.83	NP	NP	79.13		Gauged Only					
MW-17	02/09/2010	94.96	15.89	NP	NP	79.07		<0.50	<0.50	<0.50	<0.50	ND	1.2
MW-17	03/15/2010	94.96	15.21	NP	NP	79.75		<0.50	<0.50	<0.50	<0.50	ND	1.5
MW-17	04/08/2010	94.96	20.98	NP	NP	73.98		Gauged Only					
MW-17	05/19/2010	94.96	15.44	NP	NP	79.52		<0.50	<0.50	<0.50	<0.50	ND	1.2
MW-17	06/02/2010	94.96	15.62	NP	NP	79.34		Gauged Only					
MW-17	07/12/2010	94.96	15.72	NP	NP	79.24		Gauged Only					
MW-17	08/18/2010	94.96	16.01	NP	NP	78.95		<0.50	<0.50	<0.50	<0.50	ND	1.2

TABLE 1
GROUND WATER GAUGING AND ANALYTICAL DATA
 BP Station Number 03887
 164 4th Ave
 Brooklyn, NY

Well ID	Date	GROUND WATER GAUGING DATA						GROUND WATER ANALYTICAL DATA					
		Reference Elevation (ft)	Depth to Water (ft)	Depth to LNAPL (ft)	LNAPL Thickness (ft)	Water Elevation (ft)*	Purge Volume (gals)*	Benzene (µg/L)	Toluene (µg/L)	Ethylbenzene (µg/L)	Xylenes (µg/L)	Total BTEX (µg/L)	MTBE (µg/L)
NYSDEC TOGS WQS		NGV	NGV	NGV	NGV	NGV	NGV	1	5	5	5	NGV	10
MW-17	11/01/2010	94.96	15.78	NP	NP	79.18		<0.50	<0.50	<0.50	<0.50	ND	1
MW-17	02/14/2011	94.96	15.68	NP	NP	79.28		<0.50	<0.50	<0.50	<0.50	ND	1.1
MW-17	06/17/2011	94.96	15.71	NP	NP	79.25	2.50**	<0.50	<0.50	<0.50	<0.50	ND	0.83 J
MW-17	08/01/2011	94.96	15.94	NP	NP	79.02	2.25**	<0.50	<0.50	<0.50	<0.50	ND	1
MW-17	11/01/2011	94.96	15.30	NP	NP	79.66	2.75	<0.50	<0.50	<0.50	<0.50	ND	0.95 J
MW-17	02/14/2012	94.96	16.09	NP	NP	78.87	2.25	<0.50	<0.50	<0.50	<0.50	ND	1.5
MW-17	05/24/2012	94.96	16.15	NP	NP	78.81	2.25	<0.50	<0.50	<0.50	<0.50	ND	1
MW-17	08/27/2012	94.96	15.44	NP	NP	79.52	6.00	<0.50	<0.50	<0.50	<0.50	ND	1.6
MW-17	11/26/2012	94.96	16.15	NP	NP	78.81	2.50	<0.50	<0.50	<0.50	<0.50	ND	1.5
MW-17	02/15/2013	94.96	16.32	NP	NP	78.64	2.00	<0.50	<0.50	<0.50	<0.50	ND	1.4
MW-17	05/13/2013	94.96	16.32	NP	NP	78.64	2.00	<0.50	<0.50	<0.50	<0.50	ND	1.1

TABLE 1
GROUND WATER GAUGING AND ANALYTICAL DATA
 BP Station Number 03887
 164 4th Ave
 Brooklyn, NY

Well ID	Date	GROUND WATER GAUGING DATA						GROUND WATER ANALYTICAL DATA					
		Reference Elevation (ft)	Depth to Water (ft)	Depth to LNAPL (ft)	LNAPL Thickness (ft)	Water Elevation (ft)*	Purge Volume (gals)*	Benzene (µg/L)	Toluene (µg/L)	Ethyl-benzene (µg/L)	Xylenes (µg/L)	Total BTEX (µg/L)	MTBE (µg/L)
NYSDEC TOGS WQS		NGV	NGV	NGV	NGV	NGV	NGV	1	5	5	5	NGV	10

Gauging Notes:

TOC - Top of Casing
 ft - Feet

LNAPL - Light non-aqueous phase liquid

NGV - No guidance value

NP - LNAPL not present

NM - Not measured

* - Corrected for LNAPL if present (assumes LNAPL specific gravity = 0.75)

8/19/2009 - Well network resurveyed. New reference elevations applied since Jun

Analytical Notes:

NYSDEC - New York State Department of Environmental Conservation

TOGS WQS - Technical & Operational Guidance Series 1.1.1, Ambient Water Quality Standards and Guidance Values

TOTAL BTEX - Sum of benzene, toluene, ethylbenzene and xylenes concentrations

MTBE - Methyl tertiary-butyl ether

µg/L - Micrograms per liter

NGV - No guidance value

Results in bold exceed applicable NYSDEC WQS

< - Not detected at or above indicated laboratory reporting limit

J - Estimated concentration below the instrument reporting limit

NS - Not sampled

NA - Not analyzed

ND - Not detected

Table 2
 Sulfate Results
 BP Station Number 03887
 164 4th Avenue
 Brooklyn, NY

Date Sampled	Monitoring Well Locations and Concentrations (mg/L)										Application Wells
	MW-1	MW-2	MW-5	MW-6	MW-7	MW-8	MW-9	MW-12	MW-14	MW-15	
9/17/2012	3.6 J	11.9	NS	2.1 J	2.6 J	1.6 J	< 1.5	87.5	23.60	< 1.5	
9/18/2012	25,300	NS	NS	NS	NS	NS	NS	NS	NS	27,000	
9/19/2012	15,800	12.4	120	14.3	<1.5	1.9 J	2.4 J	83	19.9	21,000	
9/26/2012	6,250	12.3	24.4	8.0	<1.5	3.9 J	2.4 J	233	20.3	20,900	
10/11/2012	574	2.1 J	9.3	<1.5	<1.5	2.2 J	<1.5	150	6.7	64,000	
10/25/2012	98.5	1.7 J	77.4	1.5 J	2.0 J	7.2	<1.5	176	14.6	10,700	
11/26/2012	13.7	2.5 J	125	<1.5	<1.5	9.9	1.9 J	218	24.7	8,520	
11/27/2012	4,200	NS	NS	NS	NS	NS	NS	NS	NS	26,600	MW-1 & MW-15
11/28/2012	23,200	<1.5	154	<1.5	<1.5	10.1	<1.5	249	43.7	18,500	
12/11/2012	293	<1.5	43.3	2.0 J	<1.5	10.0	<1.5	273	111	19,400	
12/26/2012	43.3	<1.5	57.4	<1.5	<1.5	10.9	<1.5	280	106	13,300	
1/28/2013	4.0 J	NS	52.6	<1.5	<1.5	13.7	<1.5	177	134	10,000	
1/29/2013	25,500	NS	NS	NS	NS	NS	NS	NS	NS	25,600	MW-1 & MW-15
1/30/2013	23,400	<1.5	2.5 J	3.1 J	<1.5	15.2	<1.5	259	172	23,700	
2/5/2013	1,320	NS	83.2	<1.5	<1.5	14.9	<1.5	174	107	22,400	
2/19/2013	97.8	<1.5	58.9	<1.5	<1.5	15.2	<1.5	164	249	21,000	
3/22/2013	11.8	<1.5	15.2	<1.5	<1.5	14.1	1.5 J	150	289	9,830	
3/25/2013	6.4	<1.5	12.2	<1.5	<1.5	16.7	2.2 J	230	323	9,040	
3/26/2013	30,900	NS	NS	NS	NS	NS	NS	NS	NS	25,300	MW-1 & MW-15
3/27/2013	17,500	2.4 J	66.7	1.6 J	<1.5	152	2.1 J	255	307	21,500	
4/4/2013	644	<1.5	111	<1.5	<1.5	13.2	3.4 J	270	348	16,300	
4/16/2013	100	6.5	28.7	2.4 J	<1.5	12.8	2.9 J	235	317	10,200	
5/2/2013	12.6	5.4	2.4 J	2.5 J	<1.5	13.1	2.4 J	154	341	6,240	
5/13/2013	8.1	11.5	<1.5	1.5 J	<1.5	13.4	2.6 J	162	352	6,740	

NOTES:

All concentrations reported in milligrams per liter (mg/L)

NS-Not Sampled

Appendix A

ANALYTICAL RESULTS

Prepared by:

Eurofins Lancaster Laboratories
2425 New Holland Pike
Lancaster, PA 17601

Prepared for:

Atlantic Richfield (Antea-NY)
BP Corporation
501 WestLake Park Blvd.
Houston TX 77079

May 22, 2013

Project: BP 3887

Submittal Date: 05/14/2013
Group Number: 1389709
PO Number: 005P4-0006
Release Number: ONUFRAK/3887
State of Sample Origin: NY

<u>Client Sample Description</u>	<u>Lancaster Labs (LLD) #</u>
MW-1 Water	7055112
MW-2 Water	7055113
MW-3 Water	7055114
MW-4 Water	7055115
MW-5 Water	7055116
MW-6 Water	7055117
MW-7 Water	7055118
MW-8 Water	7055119
MW-9 Water	7055120
MW-10 Water	7055121
MW-12 Water	7055122
MW-13 Water	7055123
MW-14 Water	7055124
MW-15 Water	7055125
MW-16 Water	7055126
MW-17 Water	7055127
Trip Blank Water	7055128

The specific methodologies used in obtaining the enclosed analytical results are indicated on the Laboratory Sample Analysis Record.

ELECTRONIC The Antea Group

Attn: Mara Grislis

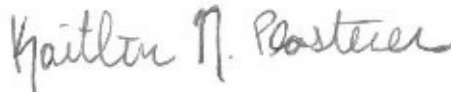
COPY TO

ELECTRONIC Atlantic Richfield (Antea-NY)

Attn: Mark Hutson

COPY TO

Respectfully Submitted,



Kaitlin N. Plasterer
Specialist

(717) 556-7323

Project Name: BP 3887
LLI Group #: 1389709

General Comments:

Through our technical processes and second person review of data, we have established that our data/deliverables are in compliance with the methods and project requirements unless otherwise noted or previously resolved with the client. The compliance signature is located on the cover page of the Analysis Reports.

See the Laboratory Sample Analysis Record section of the Analysis Report for the method references.

All QC met criteria unless otherwise noted in an Analysis Specific Comment below. Refer to the QC Summary for specific values and acceptance criteria.

Project specific QC samples are not included in this data set

Matrix QC may not be reported if site-specific QC samples were not submitted. In these situations, to demonstrate precision and accuracy at a batch level, a LCS/LCSD was performed, unless otherwise specified in the method.

Surrogate recoveries (if applicable) which are outside of the QC window are confirmed unless attributed to a dilution or otherwise noted in an Analysis Specific Comment below.

The samples were received at the appropriate temperature and in accordance with the chain of custody unless otherwise noted.

Analysis Specific Comments:

No additional comments are necessary.

Sample Description: MW-1 Water
BP 3887 COC: R211345
164 4th Ave - Brooklyn, NY

LLI Sample # WW 7055112
LLI Group # 1389709
Account # 12379

Project Name: BP 3887

Collected: 05/13/2013 11:20 by JL

Atlantic Richfield (Antea-NY)

Submitted: 05/14/2013 09:25

BP Corporation

Reported: 05/22/2013 17:15

501 WestLake Park Blvd.

Houston TX 77079

38871

CAT No.	Analysis Name	CAS Number	As Received Result	As Received Method Detection Limit*	As Received Limit of Quantitation	Dilution Factor
GC/MS	Volatiles	SW-846 8260B	ug/l	ug/l	ug/l	
10943	Benzene	71-43-2	120	1.0	2.0	2
10943	Ethylbenzene	100-41-4	340	1.0	2.0	2
10943	Methyl Tertiary Butyl Ether	1634-04-4	6.4	1.0	2.0	2
10943	Toluene	108-88-3	780	10	20	20
10943	Xylene (Total)	1330-20-7	960	1.0	2.0	2

General Sample Comments

State of New York Certification No. 10670

All QC is compliant unless otherwise noted. Please refer to the Quality Control Summary for overall QC performance data and associated samples.

Laboratory Sample Analysis Record

CAT No.	Analysis Name	Method	Trial#	Batch#	Analysis Date and Time	Analyst	Dilution Factor
10943	UST VOCs BTEX/MTBE 8260	SW-846 8260B	1	Z131411AA	05/21/2013 14:01	Daniel H Heller	2
10943	UST VOCs BTEX/MTBE 8260	SW-846 8260B	1	Z131411AA	05/21/2013 14:25	Daniel H Heller	20
01163	GC/MS VOA Water Prep	SW-846 5030B	1	Z131411AA	05/21/2013 14:01	Daniel H Heller	2
01163	GC/MS VOA Water Prep	SW-846 5030B	2	Z131411AA	05/21/2013 14:25	Daniel H Heller	20

*=This limit was used in the evaluation of the final result

Sample Description: MW-2 Water
BP 3887 COC: R211345
164 4th Ave - Brooklyn, NY

LLI Sample # WW 7055113
LLI Group # 1389709
Account # 12379

Project Name: BP 3887

Collected: 05/13/2013 11:27 by JL

Atlantic Richfield (Antea-NY)

Submitted: 05/14/2013 09:25

BP Corporation

Reported: 05/22/2013 17:15

501 WestLake Park Blvd.

Houston TX 77079

38872

CAT No.	Analysis Name	CAS Number	As Received Result	As Received Method Detection Limit*	As Received Limit of Quantitation	Dilution Factor
GC/MS	Volatiles	SW-846 8260B	ug/l	ug/l	ug/l	
10943	Benzene	71-43-2	56	1.0	2.0	2
10943	Ethylbenzene	100-41-4	570	10	20	20
10943	Methyl Tertiary Butyl Ether	1634-04-4	29	1.0	2.0	2
10943	Toluene	108-88-3	1.9 J	1.0	2.0	2
10943	Xylene (Total)	1330-20-7	340	1.0	2.0	2

General Sample Comments

State of New York Certification No. 10670

All QC is compliant unless otherwise noted. Please refer to the Quality Control Summary for overall QC performance data and associated samples.

Laboratory Sample Analysis Record

CAT No.	Analysis Name	Method	Trial#	Batch#	Analysis Date and Time	Analyst	Dilution Factor
10943	UST VOCs BTEX/MTBE 8260	SW-846 8260B	1	Z131411AA	05/21/2013 14:49	Daniel H Heller	2
10943	UST VOCs BTEX/MTBE 8260	SW-846 8260B	1	Z131411AA	05/21/2013 15:13	Daniel H Heller	20
01163	GC/MS VOA Water Prep	SW-846 5030B	1	Z131411AA	05/21/2013 14:49	Daniel H Heller	2
01163	GC/MS VOA Water Prep	SW-846 5030B	2	Z131411AA	05/21/2013 15:13	Daniel H Heller	20

*=This limit was used in the evaluation of the final result

Sample Description: MW-3 Water
BP 3887 COC: R211345
164 4th Ave - Brooklyn, NY

LLI Sample # WW 7055114
LLI Group # 1389709
Account # 12379

Project Name: BP 3887

Collected: 05/13/2013 11:37 by JL

Atlantic Richfield (Antea-NY)

Submitted: 05/14/2013 09:25

BP Corporation

Reported: 05/22/2013 17:15

501 WestLake Park Blvd.

Houston TX 77079

38873

CAT No.	Analysis Name	CAS Number	As Received Result	As Received Method Detection Limit*	As Received Limit of Quantitation	Dilution Factor
GC/MS	Volatiles	SW-846 8260B	ug/l	ug/l	ug/l	
10943	Benzene	71-43-2	< 0.50	0.50	1.0	1
10943	Ethylbenzene	100-41-4	< 0.50	0.50	1.0	1
10943	Methyl Tertiary Butyl Ether	1634-04-4	< 0.50	0.50	1.0	1
10943	Toluene	108-88-3	< 0.50	0.50	1.0	1
10943	Xylene (Total)	1330-20-7	< 0.50	0.50	1.0	1

General Sample Comments

State of New York Certification No. 10670

All QC is compliant unless otherwise noted. Please refer to the Quality Control Summary for overall QC performance data and associated samples.

Laboratory Sample Analysis Record

CAT No.	Analysis Name	Method	Trial#	Batch#	Analysis Date and Time	Analyst	Dilution Factor
10943	UST VOCs BTEX/MTBE 8260	SW-846 8260B	1	Z131411AA	05/21/2013 15:37	Daniel H Heller	1
01163	GC/MS VOA Water Prep	SW-846 5030B	1	Z131411AA	05/21/2013 15:37	Daniel H Heller	1

*=This limit was used in the evaluation of the final result

Sample Description: MW-4 Water
BP 3887 COC: R211345
164 4th Ave - Brooklyn, NY

LLI Sample # WW 7055115
LLI Group # 1389709
Account # 12379

Project Name: BP 3887

Collected: 05/13/2013 11:44 by JL

Atlantic Richfield (Antea-NY)

Submitted: 05/14/2013 09:25

BP Corporation

Reported: 05/22/2013 17:15

501 WestLake Park Blvd.

Houston TX 77079

38874

CAT No.	Analysis Name	CAS Number	As Received Result	As Received Method Detection Limit*	As Received Limit of Quantitation	Dilution Factor
GC/MS	Volatiles	SW-846 8260B	ug/l	ug/l	ug/l	
10943	Benzene	71-43-2	490	5.0	10	10
10943	Ethylbenzene	100-41-4	550	5.0	10	10
10943	Methyl Tertiary Butyl Ether	1634-04-4	190	5.0	10	10
10943	Toluene	108-88-3	9.3 J	5.0	10	10
10943	Xylene (Total)	1330-20-7	1,000	5.0	10	10

General Sample Comments

State of New York Certification No. 10670

All QC is compliant unless otherwise noted. Please refer to the Quality Control Summary for overall QC performance data and associated samples.

Laboratory Sample Analysis Record

CAT No.	Analysis Name	Method	Trial#	Batch#	Analysis Date and Time	Analyst	Dilution Factor
10943	UST VOCs BTEX/MTBE 8260	SW-846 8260B	1	Z131411AA	05/21/2013 16:01	Daniel H Heller	10
01163	GC/MS VOA Water Prep	SW-846 5030B	1	Z131411AA	05/21/2013 16:01	Daniel H Heller	10

*=This limit was used in the evaluation of the final result

Sample Description: MW-5 Water
BP 3887 COC: R211345
164 4th Ave - Brooklyn, NY

LLI Sample # WW 7055116
LLI Group # 1389709
Account # 12379

Project Name: BP 3887

Collected: 05/13/2013 11:52 by JL

Atlantic Richfield (Antea-NY)

Submitted: 05/14/2013 09:25

BP Corporation

Reported: 05/22/2013 17:15

501 WestLake Park Blvd.

Houston TX 77079

38875

CAT No.	Analysis Name	CAS Number	As Received Result	As Received Method Detection Limit*	As Received Limit of Quantitation	Dilution Factor
GC/MS	Volatiles	SW-846 8260B	ug/l	ug/l	ug/l	
10943	Benzene	71-43-2	1,200	5.0	10	10
10943	Ethylbenzene	100-41-4	230	5.0	10	10
10943	Methyl Tertiary Butyl Ether	1634-04-4	1,200	5.0	10	10
10943	Toluene	108-88-3	76	5.0	10	10
10943	Xylene (Total)	1330-20-7	270	5.0	10	10

General Sample Comments

State of New York Certification No. 10670

All QC is compliant unless otherwise noted. Please refer to the Quality Control Summary for overall QC performance data and associated samples.

Laboratory Sample Analysis Record

CAT No.	Analysis Name	Method	Trial#	Batch#	Analysis Date and Time	Analyst	Dilution Factor
10943	UST VOCs BTEX/MTBE 8260	SW-846 8260B	1	Z131411AA	05/21/2013 16:25	Daniel H Heller	10
01163	GC/MS VOA Water Prep	SW-846 5030B	1	Z131411AA	05/21/2013 16:25	Daniel H Heller	10

*=This limit was used in the evaluation of the final result

Sample Description: MW-6 Water
BP 3887 COC: R211345
164 4th Ave - Brooklyn, NY

LLI Sample # WW 7055117
LLI Group # 1389709
Account # 12379

Project Name: BP 3887

Collected: 05/13/2013 12:00 by JL

Atlantic Richfield (Antea-NY)

Submitted: 05/14/2013 09:25

BP Corporation

Reported: 05/22/2013 17:15

501 WestLake Park Blvd.

Houston TX 77079

38876

CAT No.	Analysis Name	CAS Number	As Received Result	As Received Method Detection Limit*	As Received Limit of Quantitation	Dilution Factor
GC/MS	Volatiles	SW-846 8260B	ug/l	ug/l	ug/l	
10943	Benzene	71-43-2	510	2.5	5.0	5
10943	Ethylbenzene	100-41-4	350	2.5	5.0	5
10943	Methyl Tertiary Butyl Ether	1634-04-4	4,900	2.5	5.0	5
10943	Toluene	108-88-3	59	2.5	5.0	5
10943	Xylene (Total)	1330-20-7	380	2.5	5.0	5

General Sample Comments

State of New York Certification No. 10670

All QC is compliant unless otherwise noted. Please refer to the Quality Control Summary for overall QC performance data and associated samples.

Laboratory Sample Analysis Record

CAT No.	Analysis Name	Method	Trial#	Batch#	Analysis Date and Time	Analyst	Dilution Factor
10943	UST VOCs BTEX/MTBE 8260	SW-846 8260B	1	Z131411AA	05/21/2013 16:49	Daniel H Heller	5
01163	GC/MS VOA Water Prep	SW-846 5030B	1	Z131411AA	05/21/2013 16:49	Daniel H Heller	5

*=This limit was used in the evaluation of the final result

Sample Description: MW-7 Water
BP 3887 COC: R211345
164 4th Ave - Brooklyn, NY

LLI Sample # WW 7055118
LLI Group # 1389709
Account # 12379

Project Name: BP 3887

Collected: 05/13/2013 12:10 by JL

Atlantic Richfield (Antea-NY)

Submitted: 05/14/2013 09:25

BP Corporation

Reported: 05/22/2013 17:15

501 WestLake Park Blvd.

Houston TX 77079

38877

CAT No.	Analysis Name	CAS Number	As Received Result	As Received Method Detection Limit*	As Received Limit of Quantitation	Dilution Factor
GC/MS	Volatiles	SW-846 8260B	ug/l	ug/l	ug/l	
10943	Benzene	71-43-2	310	2.5	5.0	5
10943	Ethylbenzene	100-41-4	21	2.5	5.0	5
10943	Methyl Tertiary Butyl Ether	1634-04-4	99	2.5	5.0	5
10943	Toluene	108-88-3	6.3	2.5	5.0	5
10943	Xylene (Total)	1330-20-7	17	2.5	5.0	5

General Sample Comments

State of New York Certification No. 10670

All QC is compliant unless otherwise noted. Please refer to the Quality Control Summary for overall QC performance data and associated samples.

Laboratory Sample Analysis Record

CAT No.	Analysis Name	Method	Trial#	Batch#	Analysis Date and Time	Analyst	Dilution Factor
10943	UST VOCs BTEX/MTBE 8260	SW-846 8260B	1	Z131411AA	05/21/2013 17:12	Daniel H Heller	5
01163	GC/MS VOA Water Prep	SW-846 5030B	1	Z131411AA	05/21/2013 17:12	Daniel H Heller	5

*=This limit was used in the evaluation of the final result

Sample Description: MW-8 Water
BP 3887 COC: R211345
164 4th Ave - Brooklyn, NY

LLI Sample # WW 7055119
LLI Group # 1389709
Account # 12379

Project Name: BP 3887

Collected: 05/13/2013 12:16 by JL

Atlantic Richfield (Antea-NY)

Submitted: 05/14/2013 09:25

BP Corporation

Reported: 05/22/2013 17:15

501 WestLake Park Blvd.

Houston TX 77079

38878

CAT No.	Analysis Name	CAS Number	As Received Result	As Received Method Detection Limit*	As Received Limit of Quantitation	Dilution Factor
GC/MS	Volatiles	SW-846 8260B	ug/l	ug/l	ug/l	
10943	Benzene	71-43-2	< 0.50	0.50	1.0	1
10943	Ethylbenzene	100-41-4	< 0.50	0.50	1.0	1
10943	Methyl Tertiary Butyl Ether	1634-04-4	< 0.50	0.50	1.0	1
10943	Toluene	108-88-3	< 0.50	0.50	1.0	1
10943	Xylene (Total)	1330-20-7	3.6	0.50	1.0	1

General Sample Comments

State of New York Certification No. 10670

All QC is compliant unless otherwise noted. Please refer to the Quality Control Summary for overall QC performance data and associated samples.

Laboratory Sample Analysis Record

CAT No.	Analysis Name	Method	Trial#	Batch#	Analysis Date and Time	Analyst	Dilution Factor
10943	UST VOCs BTEX/MTBE 8260	SW-846 8260B	1	Z131411AA	05/21/2013 17:36	Daniel H Heller	1
01163	GC/MS VOA Water Prep	SW-846 5030B	1	Z131411AA	05/21/2013 17:36	Daniel H Heller	1

*=This limit was used in the evaluation of the final result

Sample Description: MW-9 Water
BP 3887 COC: R211345
164 4th Ave - Brooklyn, NY

LLI Sample # WW 7055120
LLI Group # 1389709
Account # 12379

Project Name: BP 3887

Collected: 05/13/2013 12:24 by JL

Atlantic Richfield (Antea-NY)

Submitted: 05/14/2013 09:25

BP Corporation

Reported: 05/22/2013 17:15

501 WestLake Park Blvd.

Houston TX 77079

38879

CAT No.	Analysis Name	CAS Number	As Received Result	As Received Method Detection Limit*	As Received Limit of Quantitation	Dilution Factor
GC/MS	Volatiles	SW-846 8260B	ug/l	ug/l	ug/l	
10943	Benzene	71-43-2	< 0.50	0.50	1.0	1
10943	Ethylbenzene	100-41-4	< 0.50	0.50	1.0	1
10943	Methyl Tertiary Butyl Ether	1634-04-4	< 0.50	0.50	1.0	1
10943	Toluene	108-88-3	< 0.50	0.50	1.0	1
10943	Xylene (Total)	1330-20-7	< 0.50	0.50	1.0	1

General Sample Comments

State of New York Certification No. 10670

All QC is compliant unless otherwise noted. Please refer to the Quality Control Summary for overall QC performance data and associated samples.

Laboratory Sample Analysis Record

CAT No.	Analysis Name	Method	Trial#	Batch#	Analysis Date and Time	Analyst	Dilution Factor
10943	UST VOCs BTEX/MTBE 8260	SW-846 8260B	1	Z131411AA	05/21/2013 18:00	Daniel H Heller	1
01163	GC/MS VOA Water Prep	SW-846 5030B	1	Z131411AA	05/21/2013 18:00	Daniel H Heller	1

*=This limit was used in the evaluation of the final result

Sample Description: MW-10 Water
BP 3887 COC: R211345
164 4th Ave - Brooklyn, NY

LLI Sample # WW 7055121
LLI Group # 1389709
Account # 12379

Project Name: BP 3887

Collected: 05/13/2013 12:33 by JL

Atlantic Richfield (Antea-NY)

Submitted: 05/14/2013 09:25

BP Corporation

Reported: 05/22/2013 17:15

501 WestLake Park Blvd.

Houston TX 77079

88710

CAT No.	Analysis Name	CAS Number	As Received Result	As Received Method Detection Limit*	As Received Limit of Quantitation	Dilution Factor
GC/MS	Volatiles	SW-846 8260B	ug/l	ug/l	ug/l	
10943	Benzene	71-43-2	< 0.50	0.50	1.0	1
10943	Ethylbenzene	100-41-4	< 0.50	0.50	1.0	1
10943	Methyl Tertiary Butyl Ether	1634-04-4	9.9	0.50	1.0	1
10943	Toluene	108-88-3	< 0.50	0.50	1.0	1
10943	Xylene (Total)	1330-20-7	< 0.50	0.50	1.0	1

General Sample Comments

State of New York Certification No. 10670

All QC is compliant unless otherwise noted. Please refer to the Quality Control Summary for overall QC performance data and associated samples.

Laboratory Sample Analysis Record

CAT No.	Analysis Name	Method	Trial#	Batch#	Analysis Date and Time	Analyst	Dilution Factor
10943	UST VOCs BTEX/MTBE 8260	SW-846 8260B	1	Z131411AA	05/21/2013 18:24	Daniel H Heller	1
01163	GC/MS VOA Water Prep	SW-846 5030B	1	Z131411AA	05/21/2013 18:24	Daniel H Heller	1

*=This limit was used in the evaluation of the final result

Sample Description: MW-12 Water
BP 3887 COC: R211345
164 4th Ave - Brooklyn, NY

LLI Sample # WW 7055122
LLI Group # 1389709
Account # 12379

Project Name: BP 3887

Collected: 05/13/2013 12:50 by JL

Atlantic Richfield (Antea-NY)

Submitted: 05/14/2013 09:25

BP Corporation

Reported: 05/22/2013 17:15

501 WestLake Park Blvd.

Houston TX 77079

88712

CAT No.	Analysis Name	CAS Number	As Received Result	As Received Method Detection Limit*	As Received Limit of Quantitation	Dilution Factor
GC/MS	Volatiles	SW-846 8260B	ug/l	ug/l	ug/l	
10943	Benzene	71-43-2	< 0.50	0.50	1.0	1
10943	Ethylbenzene	100-41-4	< 0.50	0.50	1.0	1
10943	Methyl Tertiary Butyl Ether	1634-04-4	2.6	0.50	1.0	1
10943	Toluene	108-88-3	< 0.50	0.50	1.0	1
10943	Xylene (Total)	1330-20-7	< 0.50	0.50	1.0	1

General Sample Comments

State of New York Certification No. 10670

All QC is compliant unless otherwise noted. Please refer to the Quality Control Summary for overall QC performance data and associated samples.

Laboratory Sample Analysis Record

CAT No.	Analysis Name	Method	Trial#	Batch#	Analysis Date and Time	Analyst	Dilution Factor
10943	UST VOCs BTEX/MTBE 8260	SW-846 8260B	1	Z131411AA	05/21/2013 18:48	Daniel H Heller	1
01163	GC/MS VOA Water Prep	SW-846 5030B	1	Z131411AA	05/21/2013 18:48	Daniel H Heller	1

*=This limit was used in the evaluation of the final result

Sample Description: MW-13 Water
BP 3887 COC: R211345
164 4th Ave - Brooklyn, NY

LLI Sample # WW 7055123
LLI Group # 1389709
Account # 12379

Project Name: BP 3887

Collected: 05/13/2013 12:55 by JL

Atlantic Richfield (Antea-NY)

Submitted: 05/14/2013 09:25

BP Corporation

Reported: 05/22/2013 17:15

501 WestLake Park Blvd.

Houston TX 77079

88713

CAT No.	Analysis Name	CAS Number	As Received Result	As Received Method Detection Limit*	As Received Limit of Quantitation	Dilution Factor
GC/MS	Volatiles	SW-846 8260B	ug/l	ug/l	ug/l	
10943	Benzene	71-43-2	< 0.50	0.50	1.0	1
10943	Ethylbenzene	100-41-4	< 0.50	0.50	1.0	1
10943	Methyl Tertiary Butyl Ether	1634-04-4	1.7	0.50	1.0	1
10943	Toluene	108-88-3	< 0.50	0.50	1.0	1
10943	Xylene (Total)	1330-20-7	< 0.50	0.50	1.0	1

General Sample Comments

State of New York Certification No. 10670

All QC is compliant unless otherwise noted. Please refer to the Quality Control Summary for overall QC performance data and associated samples.

Laboratory Sample Analysis Record

CAT No.	Analysis Name	Method	Trial#	Batch#	Analysis Date and Time	Analyst	Dilution Factor
10943	UST VOCs BTEX/MTBE 8260	SW-846 8260B	1	Z131411AA	05/21/2013 19:12	Daniel H Heller	1
01163	GC/MS VOA Water Prep	SW-846 5030B	1	Z131411AA	05/21/2013 19:12	Daniel H Heller	1

*=This limit was used in the evaluation of the final result

Sample Description: MW-14 Water
BP 3887 COC: R211345
164 4th Ave - Brooklyn, NY

LLI Sample # WW 7055124
LLI Group # 1389709
Account # 12379

Project Name: BP 3887

Collected: 05/13/2013 13:02 by JL

Atlantic Richfield (Antea-NY)

Submitted: 05/14/2013 09:25

BP Corporation

Reported: 05/22/2013 17:15

501 WestLake Park Blvd.

Houston TX 77079

88714

CAT No.	Analysis Name	CAS Number	As Received Result	As Received Method Detection Limit*	As Received Limit of Quantitation	Dilution Factor
GC/MS	Volatiles	SW-846 8260B	ug/l	ug/l	ug/l	
10943	Benzene	71-43-2	< 0.50	0.50	1.0	1
10943	Ethylbenzene	100-41-4	< 0.50	0.50	1.0	1
10943	Methyl Tertiary Butyl Ether	1634-04-4	3.3	0.50	1.0	1
10943	Toluene	108-88-3	< 0.50	0.50	1.0	1
10943	Xylene (Total)	1330-20-7	< 0.50	0.50	1.0	1

General Sample Comments

State of New York Certification No. 10670

All QC is compliant unless otherwise noted. Please refer to the Quality Control Summary for overall QC performance data and associated samples.

Laboratory Sample Analysis Record

CAT No.	Analysis Name	Method	Trial#	Batch#	Analysis Date and Time	Analyst	Dilution Factor
10943	UST VOCs BTEX/MTBE 8260	SW-846 8260B	1	Z131411AA	05/21/2013 19:35	Daniel H Heller	1
01163	GC/MS VOA Water Prep	SW-846 5030B	1	Z131411AA	05/21/2013 19:35	Daniel H Heller	1

*=This limit was used in the evaluation of the final result

Sample Description: MW-15 Water
BP 3887 COC: R211345
164 4th Ave - Brooklyn, NY

LLI Sample # WW 7055125
LLI Group # 1389709
Account # 12379

Project Name: BP 3887

Collected: 05/13/2013 13:10 by JL

Atlantic Richfield (Antea-NY)

Submitted: 05/14/2013 09:25

BP Corporation

Reported: 05/22/2013 17:15

501 WestLake Park Blvd.

Houston TX 77079

88715

CAT No.	Analysis Name	CAS Number	As Received Result	As Received Method Detection Limit*	As Received Limit of Quantitation	Dilution Factor
GC/MS	Volatiles	SW-846 8260B	ug/l	ug/l	ug/l	
10943	Benzene	71-43-2	14	2.5	5.0	5
10943	Ethylbenzene	100-41-4	710	2.5	5.0	5
10943	Methyl Tertiary Butyl Ether	1634-04-4	< 2.5	2.5	5.0	5
10943	Toluene	108-88-3	1,000	2.5	5.0	5
10943	Xylene (Total)	1330-20-7	6,100	25	50	50

General Sample Comments

State of New York Certification No. 10670

All QC is compliant unless otherwise noted. Please refer to the Quality Control Summary for overall QC performance data and associated samples.

Laboratory Sample Analysis Record

CAT No.	Analysis Name	Method	Trial#	Batch#	Analysis Date and Time	Analyst	Dilution Factor
10943	UST VOCs BTEX/MTBE 8260	SW-846 8260B	1	Z131411AA	05/21/2013 19:59	Daniel H Heller	5
10943	UST VOCs BTEX/MTBE 8260	SW-846 8260B	1	Z131411AA	05/21/2013 20:23	Daniel H Heller	50
01163	GC/MS VOA Water Prep	SW-846 5030B	1	Z131411AA	05/21/2013 19:59	Daniel H Heller	5
01163	GC/MS VOA Water Prep	SW-846 5030B	2	Z131411AA	05/21/2013 20:23	Daniel H Heller	50

*=This limit was used in the evaluation of the final result

Sample Description: MW-16 Water
BP 3887 COC: R211345
164 4th Ave - Brooklyn, NY

LLI Sample # WW 7055126
LLI Group # 1389709
Account # 12379

Project Name: BP 3887

Collected: 05/13/2013 13:18 by JL

Atlantic Richfield (Antea-NY)

Submitted: 05/14/2013 09:25

BP Corporation

Reported: 05/22/2013 17:15

501 WestLake Park Blvd.

Houston TX 77079

88716

CAT No.	Analysis Name	CAS Number	As Received Result	As Received Method Detection Limit*	As Received Limit of Quantitation	Dilution Factor
GC/MS	Volatiles	SW-846 8260B	ug/l	ug/l	ug/l	
10943	Benzene	71-43-2	< 0.50	0.50	1.0	1
10943	Ethylbenzene	100-41-4	< 0.50	0.50	1.0	1
10943	Methyl Tertiary Butyl Ether	1634-04-4	13	0.50	1.0	1
10943	Toluene	108-88-3	0.69 J	0.50	1.0	1
10943	Xylene (Total)	1330-20-7	2.8	0.50	1.0	1

General Sample Comments

State of New York Certification No. 10670

All QC is compliant unless otherwise noted. Please refer to the Quality Control Summary for overall QC performance data and associated samples.

Laboratory Sample Analysis Record

CAT No.	Analysis Name	Method	Trial#	Batch#	Analysis Date and Time	Analyst	Dilution Factor
10943	UST VOCs BTEX/MTBE 8260	SW-846 8260B	1	Z131411AA	05/21/2013 20:47	Daniel H Heller	1
01163	GC/MS VOA Water Prep	SW-846 5030B	1	Z131411AA	05/21/2013 20:47	Daniel H Heller	1

*=This limit was used in the evaluation of the final result

Sample Description: MW-17 Water
BP 3887 COC: R211345
164 4th Ave - Brooklyn, NY

LLI Sample # WW 7055127
LLI Group # 1389709
Account # 12379

Project Name: BP 3887

Collected: 05/13/2013 13:28 by JL

Atlantic Richfield (Antea-NY)

Submitted: 05/14/2013 09:25

BP Corporation

Reported: 05/22/2013 17:15

501 WestLake Park Blvd.

Houston TX 77079

88717

CAT No.	Analysis Name	CAS Number	As Received Result	As Received Method Detection Limit*	As Received Limit of Quantitation	Dilution Factor
GC/MS	Volatiles	SW-846 8260B	ug/l	ug/l	ug/l	
10943	Benzene	71-43-2	< 0.50	0.50	1.0	1
10943	Ethylbenzene	100-41-4	< 0.50	0.50	1.0	1
10943	Methyl Tertiary Butyl Ether	1634-04-4	1.1	0.50	1.0	1
10943	Toluene	108-88-3	< 0.50	0.50	1.0	1
10943	Xylene (Total)	1330-20-7	< 0.50	0.50	1.0	1

General Sample Comments

State of New York Certification No. 10670

All QC is compliant unless otherwise noted. Please refer to the Quality Control Summary for overall QC performance data and associated samples.

Laboratory Sample Analysis Record

CAT No.	Analysis Name	Method	Trial#	Batch#	Analysis Date and Time	Analyst	Dilution Factor
10943	UST VOCs BTEX/MTBE 8260	SW-846 8260B	1	Z131411AA	05/21/2013 21:11	Daniel H Heller	1
01163	GC/MS VOA Water Prep	SW-846 5030B	1	Z131411AA	05/21/2013 21:11	Daniel H Heller	1

*=This limit was used in the evaluation of the final result

Sample Description: Trip Blank Water
BP 3887 COC: R211345
164 4th Ave - Brooklyn, NY

LLI Sample # WW 7055128
LLI Group # 1389709
Account # 12379

Project Name: BP 3887

Collected: 05/13/2013

Atlantic Richfield (Antea-NY)

Submitted: 05/14/2013 09:25

BP Corporation

Reported: 05/22/2013 17:15

501 WestLake Park Blvd.

Houston TX 77079

3887T

CAT No.	Analysis Name	CAS Number	As Received Result	As Received Method Detection Limit*	As Received Limit of Quantitation	Dilution Factor
GC/MS	Volatiles	SW-846 8260B	ug/l	ug/l	ug/l	
10943	Benzene	71-43-2	< 0.50	0.50	1.0	1
10943	Ethylbenzene	100-41-4	< 0.50	0.50	1.0	1
10943	Methyl Tertiary Butyl Ether	1634-04-4	< 0.50	0.50	1.0	1
10943	Toluene	108-88-3	< 0.50	0.50	1.0	1
10943	Xylene (Total)	1330-20-7	< 0.50	0.50	1.0	1

General Sample Comments

State of New York Certification No. 10670

All QC is compliant unless otherwise noted. Please refer to the Quality Control Summary for overall QC performance data and associated samples.

Laboratory Sample Analysis Record

CAT No.	Analysis Name	Method	Trial#	Batch#	Analysis Date and Time	Analyst	Dilution Factor
10943	UST VOCs BTEX/MTBE 8260	SW-846 8260B	1	Z131411AA	05/21/2013 21:35	Daniel H Heller	1
01163	GC/MS VOA Water Prep	SW-846 5030B	1	Z131411AA	05/21/2013 21:35	Daniel H Heller	1

*=This limit was used in the evaluation of the final result

Quality Control Summary

Client Name: Atlantic Richfield (Antea-NY)
Reported: 05/22/13 at 05:15 PM

Group Number: 1389709

Matrix QC may not be reported if insufficient sample or site-specific QC samples were not submitted. In these situations, to demonstrate precision and accuracy at a batch level, a LCS/LCSD was performed, unless otherwise specified in the method.

All Inorganic Initial Calibration and Continuing Calibration Blanks met acceptable method criteria unless otherwise noted on the Analysis Report.

Laboratory Compliance Quality Control

<u>Analysis Name</u>	<u>Blank Result</u>	<u>Blank MDL**</u>	<u>Blank LOQ</u>	<u>Report Units</u>	<u>LCS %REC</u>	<u>LCSD %REC</u>	<u>LCS/LCSD Limits</u>	<u>RPD</u>	<u>RPD Max</u>
Batch number: Z131411AA	Sample number(s): 7055112-7055128								
Benzene	< 0.50	0.50	1.0	ug/l	101	103	77-121	1	30
Ethylbenzene	< 0.50	0.50	1.0	ug/l	106	108	79-120	1	30
Methyl Tertiary Butyl Ether	< 0.50	0.50	1.0	ug/l	102	102	68-121	0	30
Toluene	< 0.50	0.50	1.0	ug/l	106	108	79-120	2	30
Xylene (Total)	< 0.50	0.50	1.0	ug/l	107	109	77-120	2	30

Surrogate Quality Control

Surrogate recoveries which are outside of the QC window are confirmed unless attributed to dilution or otherwise noted on the Analysis Report.

Analysis Name: UST VOCs BTEX/MTBE 8260
Batch number: Z131411AA

	Dibromofluoromethane	1,2-Dichloroethane-d4	Toluene-d8	4-Bromofluorobenzene
7055112	94	96	105	102
7055113	92	94	106	106
7055114	94	95	105	98
7055115	93	93	105	102
7055116	93	95	106	102
7055117	94	97	107	103
7055118	92	94	105	103
7055119	93	95	106	103
7055120	93	95	104	101
7055121	92	94	107	101
7055122	94	97	105	99
7055123	93	96	106	100
7055124	93	96	104	98
7055125	93	95	107	102
7055126	91	92	107	102
7055127	95	96	107	98
7055128	93	96	105	97
Blank	94	96	105	100
LCS	92	95	103	102
LCSD	91	97	104	102
Limits:	80-116	77-113	80-113	78-113

*- Outside of specification

** - This limit was used in the evaluation of the final result for the blank

- (1) The result for one or both determinations was less than five times the LOQ.
- (2) The unspiked result was more than four times the spike added.

Quality Control Summary

Client Name: Atlantic Richfield (Antea-NY)
Reported: 05/22/13 at 05:15 PM

Group Number: 1389709

Surrogate Quality Control

*- Outside of specification

** - This limit was used in the evaluation of the final result for the blank

- (1) The result for one or both determinations was less than five times the LOQ.
- (2) The unspiked result was more than four times the spike added.



A12379 / 1389709 / 7055112-28
Laboratory Management Program LaMP Chain of Custody Record

R211345

Page 1 of 2

BP Site Node Path: 164 4th Ave
 BP Facility No: 03887

Req Due Date (mm/dd/yy): Std Rush TAT: Yes No
 Lab Work Order Number: _____

Lab Name: <u>Lancaster Laboratories</u>	Facility Address: <u>164 4th Ave Brooklyn, NY</u>	Consultant/Contractor: <u>Antea Group</u>
Lab Address: <u>2425 New Holland Pike Lancaster PA</u>	City, State, ZIP Code: <u>Brooklyn, NY</u>	Consultant/Contractor Project No: <u>03887-PA/13/</u>
Lab PM: <u>Karlton Pasterer</u>	Lead Regulatory Agency: <u>NY DEC</u>	Address: <u>500 Summit Lake Dr. Valhalla NY</u>
Lab Phone: <u>717 656-2300</u>	California Global ID No.:	Consultant/Contractor PM: <u>Mark Hudson</u>
Lab Shipping Acct:	Enfos Proposal No: <u>005P4-0006</u>	Phone: <u>914 495 9947</u> Email:
Lab Bottle Order No: <u>139117</u>	Accounting Mode: Provision <input checked="" type="checkbox"/> OOC-BU <input type="checkbox"/> OOC-RM <input type="checkbox"/>	Email EDD To: <u>mark.hudson@antegrup.com</u> and to <u>lab.enfosdoc@bp.com</u>
Other Info:	Stage: <u>40</u> Activity: <u>80</u>	Invoice To: BP <input checked="" type="checkbox"/> Contractor _____

BP Project Manager (PM): <u>Nicholas Onufrak</u>	Matrix	No. Containers / Preservative	Requested Analyses	Report Type & QC Level
BP PM Phone:				Standard <input checked="" type="checkbox"/>
BP PM Email: <u>Nicholas.onufrak@BP.com</u>				Full Data Package <input type="checkbox"/>

Lab No.	Sample Description	Date	Time	Matrix				No. Containers / Preservative					Total Number of Containers	Unpreserved	H2SO4	HNO3	HCl	Methanol	Comments
				Soil / Solid	Water / Liquid	Air / Vapor	Is this location a well?												
	MW-1	5/13/13	11:20								3								TRIP BLANK WILL BE ANALYZED FOR BTEX AND MTRE BY 8200 PER MGRS LK KNP 5/14/13
	MW-2		11:27																
	MW-3		11:37																
	MW-4		11:44																
	MW-5		11:52																
	MW-6		12:00																
	MW-7		12:10																
	MW-8		12:14																
	MW-9		12:24																
	MW-10	5/13/13	12:33								3								

Sampler's Name: <u>Jared Levine</u>	Relinquished By / Affiliation	Date	Time	Accepted By / Affiliation	Date	Time
Sampler's Company: <u>Antea Group</u>	<u>Angela S. Montgomery / LLI</u>	<u>5/8/13</u>	<u>8:26</u>			
Shipment Method: <u>FedEx</u> Ship Date: <u>5/13/13</u>	<u>Antea Group</u>	<u>5/13/13</u>	<u>17:00</u>			
Shipment Tracking No: <u>801301859577</u>				<u>Cesher LLI</u>	<u>5/14/13</u>	<u>0925</u>

Special Instructions:

THIS LINE - LAB USE ONLY: Custody Seals In Place: Yes / No | Temp Blank: Yes / No | Cooler Temp on Receipt: 0.3 °F | Trip Blank: Yes / No | MS/MSD Sample Submitted: Yes / No



BP Site Node Path: 164 4th Ave
 BP Facility No: 03887

Req Due Date (mm/dd/yy): Std Rush TAT: Yes ___ No
 Lab Work Order Number: _____

Lab Name: <u>Lancaster Laboratories</u>	Facility Address: <u>164 4th Ave</u>	Consultant/Contractor: <u>Antea Group</u>
Lab Address: <u>2425 New Holland Pike</u>	City, State, ZIP Code: <u>Brooklyn NY</u>	Consultant/Contractor Project No: <u>03887-1131</u>
Lab PM: <u>Kathin Plasterer</u>	Lead Regulatory Agency: <u>NYSDEC</u>	Address: <u>500 Summit Lake Dr.</u>
Lab Phone: <u>717-656-2300</u>	California Global ID No.:	Consultant/Contractor PM: <u>Mark Hutson</u>
Lab Shipping Acct:	Enfos Proposal No: <u>00SP4-0006</u>	Phone: <u>9144959947</u> Email:
Lab Bottle Order No: <u>139117</u>	Accounting Mode: Provision <input checked="" type="checkbox"/> OOC-BU ___ OOC-RM ___	Email EDD To: <u>mary.grisliss@antegrp.com</u> and to <u>lab.enfosdoc@bp.com</u>
Other Info:	Stage: <u>40</u> Activity: <u>80</u>	Invoice To: BP <input checked="" type="checkbox"/> Contractor ___

BP Project Manager (PM): Nicholas Onufrak
 BP PM Phone: _____
 BP PM Email: Nicholas.Onufrak@BP.com

Lab No.	Sample Description	Date	Time	Matrix				No. Containers / Preservative					Requested Analyses	Report Type & QC Level		Comments	
				Soil / Solid	Water / Liquid	Air / Vapor	Is this location a well?	Total Number of Container:	Unpreserved	H2SO4	HNO3	HCl		Methanol	Standard ___		Full Data Package ___
	MW-12	5/13/13	12:50	X	Y	3											
	MW-12	5/13/13	12:50	X	Y	3											
	MW-13		12:55														
	MW-14		13:02														
	MW-15		13:10														
	MW-16		13:18														
	MW-17	5/13/13	13:28														

Sampler's Name: <u>Jared Levine</u>	Relinquished By / Affiliation: <u>Angela J. Montgomery / LLT</u>	Date: <u>5/8/13</u>	Time: <u>8:26</u>	Accepted By / Affiliation: <u>CEW / LLT</u>	Date: <u>5/14/13</u>	Time: <u>0925</u>
Sampler's Company: <u>Antea Group</u>	Ship Date: <u>5/13/13</u>					
Shipment Method: <u>FedEx</u>	Ship Date: <u>5/13/13</u>					
Shipment Tracking No: <u>801301859577</u>						

Special Instructions: _____

THIS LINE - LAB USE ONLY: Custody Seals In Place: Yes / No | Temp Blank: Yes / No | Cooler Temp on Receipt: 0.3 °F (°C) | Trip Blank: Yes / No | MS/MSD Sample Submitted: Yes / No

Environmental Sample Administration
Receipt Documentation Log

1389709

Client/Project: BP
 Date of Receipt: 5/14/13
 Time of Receipt: 0925
 Source Code: 50-1

Shipping Container Sealed: YES NO

Custody Seal Present * : YES NO

* Custody seal was intact unless otherwise noted in the discrepancy section

Package: Chilled Not Chilled

Temperature of Shipping Containers							
Cooler #	Thermometer ID	Temperature (°C)	Temp Bottle (TB) or Surface Temp (ST)	Wet Ice (WI) or Dry Ice (DI) or Ice Packs (IP)	Ice Present? Y/N	Loose (L) Bagged Ice (B) or NA	Comments
1	DT131	0.3	TB	WI	Y	B	
2							
3							
4							
5							
6							

Number of Trip Blanks received NOT listed on chain of custody: 2

Paperwork Discrepancy/Unpacking Problems:

Unpacker Signature/Emp#: CEM 3647 Date/Time: 5/14/13 1125

Explanation of Symbols and Abbreviations

The following defines common symbols and abbreviations used in reporting technical data:

RL	Reporting Limit	BMQL	Below Minimum Quantitation Level
N.D.	none detected	MPN	Most Probable Number
TNTC	Too Numerous To Count	CP Units	cobalt-chloroplatinate units
IU	International Units	NTU	nephelometric turbidity units
umhos/cm	micromhos/cm	ng	nanogram(s)
C	degrees Celsius	F	degrees Fahrenheit
meq	milliequivalents	lb.	pound(s)
g	gram(s)	kg	kilogram(s)
µg	microgram(s)	mg	milligram(s)
mL	milliliter(s)	L	liter(s)
m3	cubic meter(s)	µL	microliter(s)
		pg/L	picogram/liter
<	less than - The number following the sign is the <u>limit of quantitation</u> , the smallest amount of analyte which can be reliably determined using this specific test.		
>	greater than		
J	estimated value – The result is \geq the Method Detection Limit (MDL) and $<$ the Limit of Quantitation (LOQ).		
ppm	parts per million - One ppm is equivalent to one milligram per kilogram (mg/kg), or one gram per million grams. For aqueous liquids, ppm is usually taken to be equivalent to milligrams per liter (mg/l), because one liter of water has a weight very close to a kilogram. For gases or vapors, one ppm is equivalent to one microliter of gas per liter of gas.		
ppb	parts per billion		
Dry weight basis	Results printed under this heading have been adjusted for moisture content. This increases the analyte weight concentration to approximate the value present in a similar sample without moisture. All other results are reported on an as-received basis.		

U.S. EPA CLP Data Qualifiers:

Organic Qualifiers	Inorganic Qualifiers
A TIC is a possible aldol-condensation product	B Value is $<$ CRDL, but \geq IDL
B Analyte was also detected in the blank	E Estimated due to interference
C Pesticide result confirmed by GC/MS	M Duplicate injection precision not met
D Compound quantitated on a diluted sample	N Spike sample not within control limits
E Concentration exceeds the calibration range of the instrument	S Method of standard additions (MSA) used for calculation
N Presumptive evidence of a compound (TICs only)	U Compound was not detected
P Concentration difference between primary and confirmation columns $>$ 25%	W Post digestion spike out of control limits
U Compound was not detected	* Duplicate analysis not within control limits
X,Y,Z Defined in case narrative	+ Correlation coefficient for MSA $<$ 0.995

Analytical test results meet all requirements of NELAC unless otherwise noted under the individual analysis.

Measurement uncertainty values, as applicable, are available upon request.

Tests results relate only to the sample tested. Clients should be aware that a critical step in a chemical or microbiological analysis is the collection of the sample. Unless the sample analyzed is truly representative of the bulk of material involved, the test results will be meaningless. If you have questions regarding the proper techniques of collecting samples, please contact us. We cannot be held responsible for sample integrity, however, unless sampling has been performed by a member of our staff. This report shall not be reproduced except in full, without the written approval of the laboratory.

Times are local to the area of activity. Parameters listed in the 40 CFR part 136 Table II as "analyze immediately" are not performed within 15 minutes.

WARRANTY AND LIMITS OF LIABILITY - In accepting analytical work, we warrant the accuracy of test results for the sample as submitted. THE FOREGOING EXPRESS WARRANTY IS EXCLUSIVE AND IS GIVEN IN LIEU OF ALL OTHER WARRANTIES, EXPRESSED OR IMPLIED. WE DISCLAIM ANY OTHER WARRANTIES, EXPRESSED OR IMPLIED, INCLUDING A WARRANTY OF FITNESS FOR PARTICULAR PURPOSE AND WARRANTY OF MERCHANTABILITY. IN NO EVENT SHALL LANCASTER LABORATORIES BE LIABLE FOR INDIRECT, SPECIAL, CONSEQUENTIAL, OR INCIDENTAL DAMAGES INCLUDING, BUT NOT LIMITED TO, DAMAGES FOR LOSS OF PROFIT OR GOODWILL REGARDLESS OF (A) THE NEGLIGENCE (EITHER SOLE OR CONCURRENT) OF LANCASTER LABORATORIES AND (B) WHETHER LANCASTER LABORATORIES HAS BEEN INFORMED OF THE POSSIBILITY OF SUCH DAMAGES. We accept no legal responsibility for the purposes for which the client uses the test results. No purchase order or other order for work shall be accepted by Lancaster Laboratories which includes any conditions that vary from the Standard Terms and Conditions, and Lancaster hereby objects to any conflicting terms contained in any acceptance or order submitted by client.