

DAILY STATUS REPORT

Prepared By: Matthew Del Balzo

WEATHER	Snow	Rain	Overcast	Partly Cloudy	×	Bright Sun
TEMP.	< 32	32-50	50-70	×	70-85	>85

DEC Project No.:	C224319	E-Number:	15TMP0625K,	Date:	5-13-2022
VCP Project No.:	NA	DOB Job No.:	15EHAN039K		
Project Name:	205 Park Avenue, Brooklyn, NY			SW 8 MPH	

Consultant: GZA GeoEnvironmental of New York	Safety Officer: Isaac Feuerwerger Pyramid Builders NY LLC	Equipment CAMP Station 1 (Airlogics-downwind perimeter) CAMP Station 2 (PID and dust track-work area/ upwind)
General Contractor: Isaac Feuerwerger Pyramid Builders NY LLC	Site Manager/ Supervisor: Isaac Feuerwerger Pyramid Builders NY LLC	Field Representative Adam Spaulding (GZA)

Work Activities Performed (Since Last Report):

Exporting soil to Coplay facility
Plumbing along eastern side of Site
Footers, concrete forms along northern wall

Working In Grid #: A, B, C, D, E, F

Samples Collected (Since Last Report):

None

Air Monitoring (Since Last Report):

See attached CAMP log

Problems Encountered:

N/A

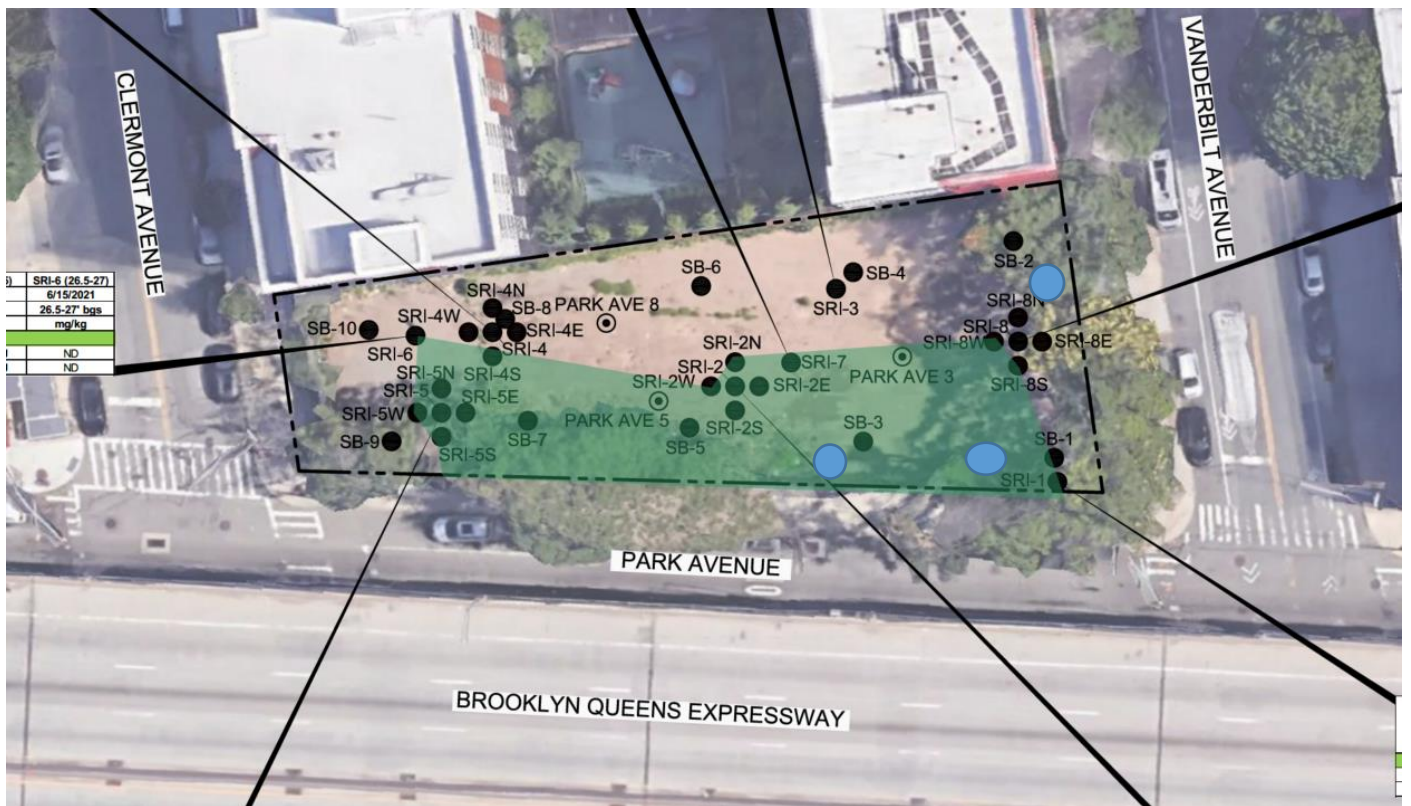
Planned Activities for the Next Day/ Week:

Continue to truck off soil for offsite disposal for the week of May 16th, 2022.
Continue with the Support of Excavation (SOE) and soil grading.
Rebar/raker delivery

Facility # Name/ Location Type of Waste Solid Or Liquid	Clean Earth 24 Middlesex Ave, Carteret, NJ 07008 Non-Hazardous waste		Coplay Quarry facility 5101 Beekmantown Road, Whitehall, PA. Non-Hazardous waste							
	Trucks	Appx/Cu. Yds.	Trucks	Appx/Cu. Yds.	Trucks	Appx/Cu. Yds.	Trucks	Appx/Cu. Yds.	Trucks	Gallons.
Today			26	520						
Total	58	1,160	257	5,140	0	0	0	0	0	0

Site Grid Map

Not to Scale



APPROXIMATE LOCATION OF MONITORING WELLS



SOILS TO BE DISPOSED AT CLEAN EARTH OR FACILITY THAT ACCEPT THE PFAS SPLP SOILS

Photo 1 –
Facing East
Grading soil
along rakers
and walers.



Photo 2 –
Facing
Northeast
Live loading
on sidewalk for
disposal at the
Coplay facility.



Photo 3 –
Facing West
View of CAMP
Station 2
located on the
northeast
corner of the
Site.



Photo 4 –
Facing
Southwest
CAMP 1
station located
near
stockpiled
soils along
entrance gate.



GZA · Park Ave · Location 1
 Monitoring Location Data export
 5/13/2022 to 5/13/2022
 (UTC-05:00) Eastern Time (US & Canada) (Summer time adjusted)
 Averaging period: 15 minutes

Time	VOC (ppm)	PM10 (µg/	Battery voltage (V)
5/13/2022 6:45	0	10.71	13.464
5/13/2022 7:00	0	6.43	13.091
5/13/2022 7:15	0	7.47	13.041
5/13/2022 7:30	0	6.25	13.042
5/13/2022 7:45	0	6.66	13.043
5/13/2022 8:00	0.01	8.09	13.043
5/13/2022 8:15	0	5.32	13.043
5/13/2022 8:30	0	5.07	13.043
5/13/2022 8:45	0	1.53	13.043
5/13/2022 9:00	0	0.16	13.043
5/13/2022 9:15	0	0.19	13.043
5/13/2022 9:30	0	0.18	13.043
5/13/2022 9:45	0	0.01	13.043
5/13/2022 10:00	0	0.58	13.042
5/13/2022 10:15	0	0.18	13.037
5/13/2022 10:30	0.01	2.48	13.022
5/13/2022 10:45	0	0.44	13.009
5/13/2022 11:00	0	0	12.999
5/13/2022 11:15	0	0.55	12.974
5/13/2022 11:30	0.15	0.93	12.949
5/13/2022 11:45	0.07	0	12.933
5/13/2022 12:00	0.04	0	12.908
5/13/2022 12:15	0.03	0.01	12.903
5/13/2022 12:30	0.03	0.01	12.902
5/13/2022 12:45	0.02	0.4	12.902
5/13/2022 13:00	0.01	2.32	12.9
5/13/2022 13:15	0	0.86	12.9
5/13/2022 13:30	0	1.14	12.899
5/13/2022 13:45	0	0.19	12.898
5/13/2022 14:00	0	0.76	12.895
5/13/2022 14:15	0	3.92	12.894
5/13/2022 14:30	0	0.58	12.889
5/13/2022 14:45	0	1.62	12.881
5/13/2022 15:00	0.03	3.39	12.872
5/13/2022 15:15	0.01	10.67	12.872
5/13/2022 15:30	0.01	8.94	12.906
5/13/2022 15:45	0.04	4.55	12.875

5-13-2022 CAMP Location 2

Air Monitoring Data

Time	PID Readings (ppm)	DUST Readings (mg/m ³)
6:45:00 AM	0.0	0.027
7:15:00 AM	0.0	0.021
7:45:00 AM	0.0	0.023
8:15:00 AM	0.0	0.025
8:45:00 AM	0.0	0.022
9:15:00 AM	0.0	0.015
9:45:00 AM	0.0	0.014
10:15:00 AM	0.0	0.014
10:45:00 AM	0.0	0.015
11:15:00 AM	0.0	0.011
11:45:00 AM	0.0	0.009
12:15:00 PM	0.0	0.008
12:45:00 PM	0.0	0.011
1:15:00 PM	0.0	0.008
1:45:00 PM	0.0	0.008
2:15:00 PM	0.0	0.013
2:45:00 PM	0.0	0.008
3:15:00 PM	0.0	0.013
3:45:00 PM	0.0	0.014