

<b>PROJECT No.:</b> 170361306	<b>CLIENT:</b> Gowanus President Owner LLC	<b>DATE:</b> Tue., February 7 <sup>th</sup> , 2023
<b>PROJECT:</b> 514 Union Street		<b>WEATHER:</b> Clear, 28 – 42 °F Wind: SSE @ 5 – 14 mph
<b>LOCATION:</b> Brooklyn, New York		<b>TIME:</b> 6:45 am – 4:45 pm
<b>BCP SITE ID:</b> C224318		<b>MONITOR:</b> Audrey Seery
<b>EQUIPMENT:</b> RKI Photoionization Detector (PID) Groundwater sampling equipment		<b>PRESENT AT SITE:</b> <b>Langan:</b> Audrey Seery <b>Regenesis:</b> Joshua Grasser, Julian Serrano, Neil Wang
<b>OBSERVATIONS, DISCUSSIONS, TEST RESULTS, ETC.:</b> Langan was on-site to document implementation of the New York State Department of Environmental Conservation (NYSDEC)-approved February 2 <sup>nd</sup> , 2023 Interim Remedial Measures Work Plan (IRMWP) No. 2.		
<b>Site Activities</b> <ul style="list-style-type: none"><li>Langan collected four baseline groundwater samples. Purged groundwater was containerized in a 55-gallon drum.</li><li>Regenesis mobilized equipment and materials to the site.</li></ul>		
<b>Sampling</b> <ul style="list-style-type: none"><li>Langan collected four baseline groundwater samples from groundwater monitoring wells MW08D, MW11D, MW13D, and HRP-MW-1 (installed by others) to be analyzed for chlorinated volatile organic compounds (CVOCs). Samples were relinquished to Alpha Analytical, Inc., a New York State Department of Health (NYSDOH) Environmental Laboratory Accredited Program (ELAP)-certified laboratory under standard chain-of-custody protocols.</li></ul>		
<b>CAMP</b> <ul style="list-style-type: none"><li>Continuous air monitoring was not performed because ground-intrusive activities were not conducted. Periodic air monitoring for volatile organic compounds (VOCs) was conducted with a handheld PID during groundwater sampling.</li></ul>		
<b>Anticipated Activities</b> <ul style="list-style-type: none"><li>Langan will continue collecting baseline groundwater samples.</li><li>Regenesis will continue mobilizing equipment and materials to the site.</li></ul>		
<b>Cc:</b>	J. Hayes, M. Burke, P. McMahon, V. De Paula, B. Koontz	<b>By:</b> Audrey Seery <b>Langan, D.P.C.</b>

**Site Photographs**



**Photo 1:** Groundwater sampling setup at monitoring well MW08D (facing west).

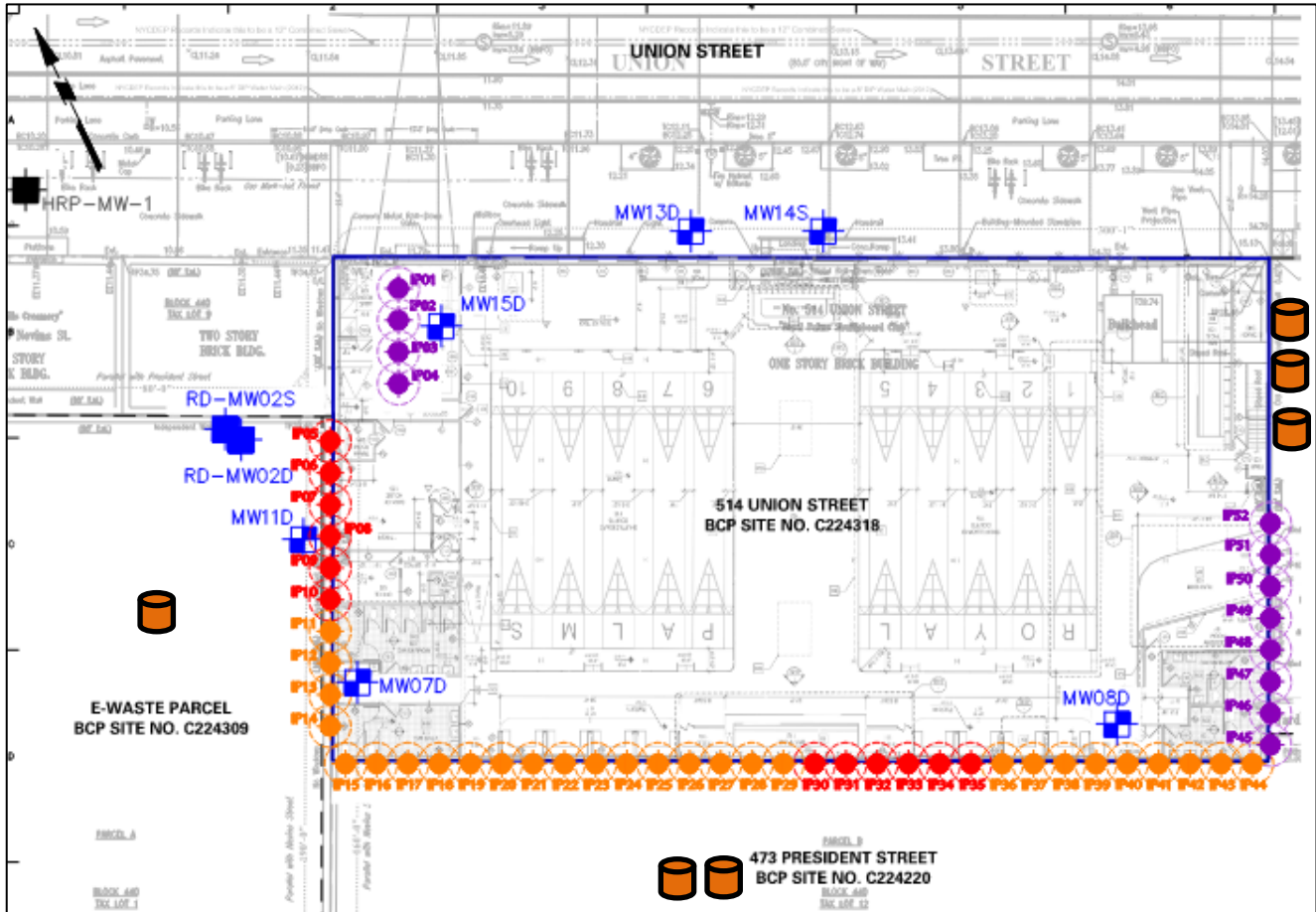


**Photo 2:** Groundwater sampling setup at monitoring well HRP-MW-1.



Cc: J. Hayes, M. Burke, P. McMahon, V. De Paula, B. Koontz

By: Audrey Seery  
**Langan, D.P.C.**

**Site Map**



**Legend**

-  Approximate Site Boundary
-  Approximate Drum Location

**Notes**

1. Base Map adapted from IRMWP No. 2 Figure 8.

Cc: J. Hayes, M. Burke, P. McMahon, V. De Paula, B. Koontz

By: Audrey Seery  
**Langan, D.P.C.**